

TOWNSVILLE CITY STATISTICAL SNAPSHOT >>

JUNE 2009



Data contained in this brochure is supplied and compiled by the staff of the Townsville Office of Economic and Statistical Research (OESR), from Queensland Treasury. Their input and helpfulness is much appreciated.

Are you needing further information? Council Social Planning publications, include the Demographic Profile and Townsville Region Social Atlas. These can be found on Council's website at www.townsville.qld.gov.au or contact Council's Social Planner. For business or economic enquiries, contact Council's Economic Development unit on 4727 9000.

DEMOGRAPHY >>

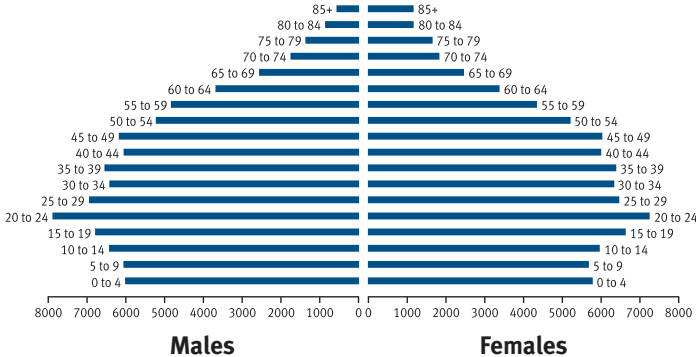
Estimated Resident Population

Local government area	2003 ^f number	2008 ^p number	Change ^(a) 2003-2008 ^p %
Townsville (C)	151,720	175,542	3.0
Northern Statistical Division	196,827	220,656	2.3
Queensland	3,809,214	4,293,915	2.4

f = final
p = preliminary
(a) Average annual growth rate.
(b) 2003 figures are preliminary rebased on ASGC 2008.
(c) 2008 figures are preliminary based on ASGC 2008.
Source: Australian Bureau of Statistics, Regional Population Growth, Australia, 2007-08, (Cat. no. 3218.0)

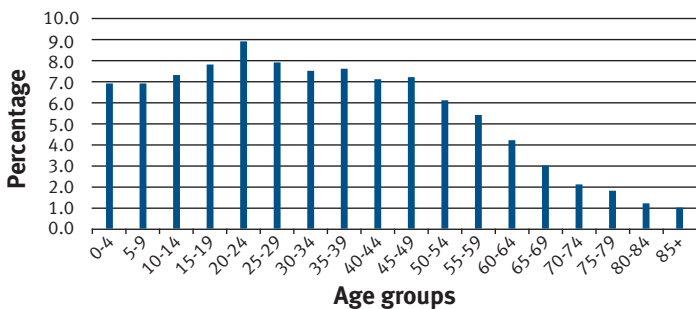
Age Characteristics

Estimated resident population by age and sex, Townsville (C) Local Government Area, June 2007^p



p = preliminary
Source: Australian Bureau of Statistics, Population by Age and Sex, Regions of Australia, 2007 (Cat. no. 3235.0)
2007 figures are preliminary rebased on ASGC 2008

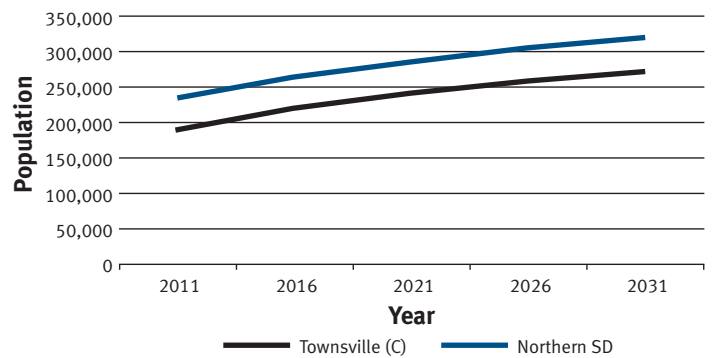
Age as a proportion of estimated resident population, Townsville (C) Local Government Area, June 2007^p



p = preliminary
Source: Australian Bureau of Statistics, Population by Age and Sex, Regions of Australia, 2007 (Cat. no. 3235.0)
2007 figures are preliminary rebased on ASGC 2008

Population Projections

Projected population, Townsville (C) Local Government Area, 2011 to 2031 (a)



(a) Based on medium projection series
Sources: Planning Information and Forecasting Unit, Department of Infrastructure and Planning, 2008. Australian Bureau of Statistics, Regional Population Growth, Australia and New Zealand, (Cat. no. 3218.0)

ECONOMIC ACTIVITY >>

Building Activity

Building approvals, Townsville (C) Local Government Area, 2007/2008

Building approvals	2007/2008
Number of buildings	
New houses	1,786
New other residential buildings	1,013
Total buildings (a)	2,817
Value of approvals (\$'000)	
New houses	474,302
New other residential buildings	300,349
Alterations, additions and conversions to residential buildings	44,860
Residential buildings	819,511
Non-residential buildings	428,240
Total buildings	1,247,751

(a) Includes conversions and dwelling units approved as part of alterations and additions and the construction of non-residential buildings.
Source: Australian Bureau of Statistics, Building Approvals, Australia, (Cat. no. 8731.0)

House Prices

Median House Prices, December Quarter 2008 Townsville (C) Local Government Area

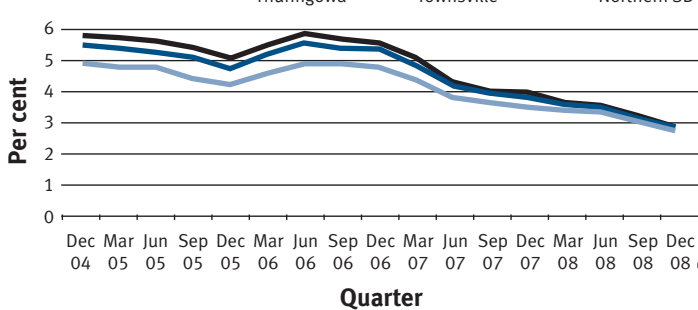
Number of sales for the December Quarter 2008	525
Median Sale for December Quarter 2008	\$360,000
Change over Quarter	2.9%
12 months to the end of December 2008	\$360,000
Change over 1 year	1.4%
Change over 5 years	115.6%

Source: Real Estate Institute of Queensland, Market Monitor March 2009

EMPLOYMENT AND INDUSTRY >>

Labour Force Status

Smoothed unemployment rate from Dec Qtr 2004 to Dec Qtr 2008



Small Area Labour Force data may have high standard errors associated with it. Care should be taken in the interpretation of regional estimates. The estimates in this collection have not been adjusted to take account of seasonal or other variations and can thus exhibit irregular movements. Based on smoothed department of Employment and Workplace Relations estimates.
Source: DEWR, Australian Government Department of Employment and Workplace Relations, Small Area Labour Markets Australia (unpublished data).

Industry of Employment(a)(b), Townsville (C), 2006

Industry	%
Public Administration & Safety	12.6
Retail Trade	11.0
Health Care & Social Assistance	10.9
Construction	9.9
Manufacturing	8.2
Education & Training	8.0
Accommodation & Food Services	6.8
Transport, Postal & Warehousing	5.1
Professional, Scientific & Technical Services	4.2
Other Services	3.5
Wholesale Trade	3.2
Administrative & Support Services	2.9
Mining	2.6
Financial & Insurance Services	1.8
Rental, Hiring & Real Estate Services	1.8
Information Media & Telecommunications	1.6
Electricity, Gas, Water & Waste Services	1.4
Arts & Recreation Services	1.3
Agriculture, Forestry & Fishing	0.8

(a) Based on place of usual residence.
(b) Based on 2006 ANZSIC
Source: ABS, Census of Population and Housing, 2006.
Figures represent ASGC 2008

Tourism

Tourist accommodation(a), Townsville Local Government Area, December Quarter 2008

Tourist accommodation	Oct	Nov	Dec
Number of establishments	40	40	40
Number of guest rooms	2,265	2,265	2,265
Takings from accommodation (\$'000)	6,382	5,845	4,863
Room occupancy rate (%)	74.1	70.1	57.1
Average length of stay (days)	2.0	2.0	2.1

(a) Hotels, motels, resorts, guest houses and serviced apartments with 15 or more rooms.
Source: Australian Bureau of Statistics, Tourist Accommodation, Australia, (Cat. no. 8635.0)

Business Numbers, Townville (C), 2006/2007

Industry	Non employing	Employing persons			Total
		1 to 4	5 to 19	20+	
Agriculture Forestry and Fishing	435	90	27	21	573
Mining	39	12	9	9	69
Manufacturing	249	147	108	51	555
Electricity Gas and Water Supply	12	-	3	-	15
Construction	1,419	798	354	117	2,688
Wholesale Trade	117	141	72	24	354
Retail Trade	513	480	327	111	1,431
Accommodation Cafés and Restaurants	90	78	87	78	333
Transport and Storage	615	135	54	30	834
Communication Services	48	51	6	-	105
Finance and Insurance	336	102	51	9	498
Property and Business Services	1,743	627	243	90	2,703
Education	78	24	9	3	114
Health and Community Services	288	228	84	42	642
Cultural and Recreational Services	135	45	21	21	222
Personal and Other Services	246	126	87	24	483
Total	6,363	3,084	1,542	624	11,619

Source: Australian Bureau of Statistics, Counts of Australian Businesses, including Entries and Exits, Jun 2006 to Jun 2007, (Cat no. 8165.0).

EDUCATION >>

Student numbers for the year ending 31 December 2006, Townsville (C) Local Government Area

School students	Townsville (C)
Prep year Government school students	50
Pre-school students Government	1,444
Primary students – (Years 1–7) Government	11,057
Secondary students - (Years 8–12) Government	6,626
Special school students Government	85
Total Government students	19,262
Pre-school students – Non-Government	511
Primary students (Years 1–7) – Non-Government	5,199
Secondary students (Years 8–12) – Non-Government	4,664
Special school students – Non-Government	-
Total Non-Government students	10,374
TOTAL SCHOOL STUDENTS	29,636

Source: Queensland Department of Education, Schools Census, Unpublished data.