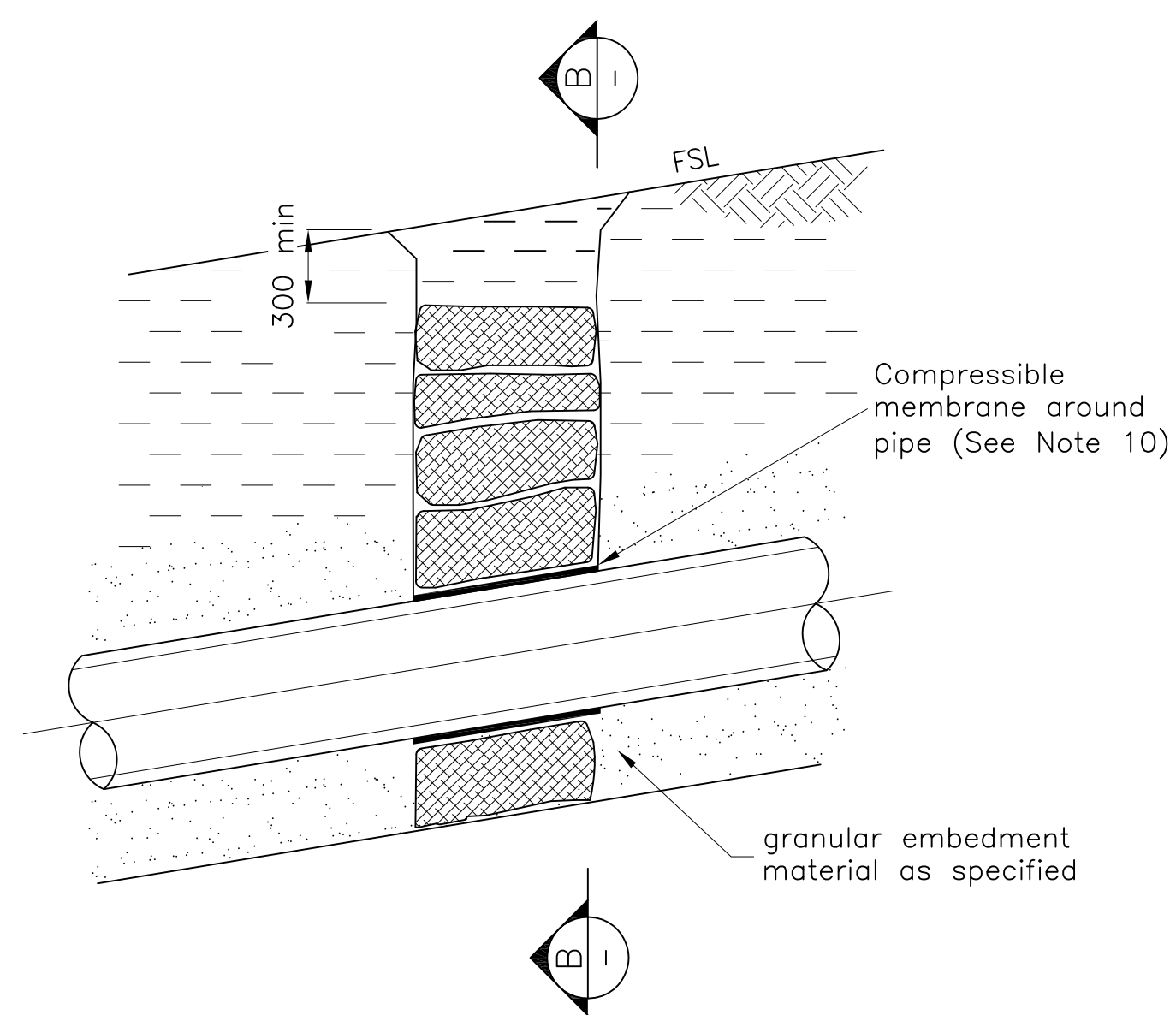
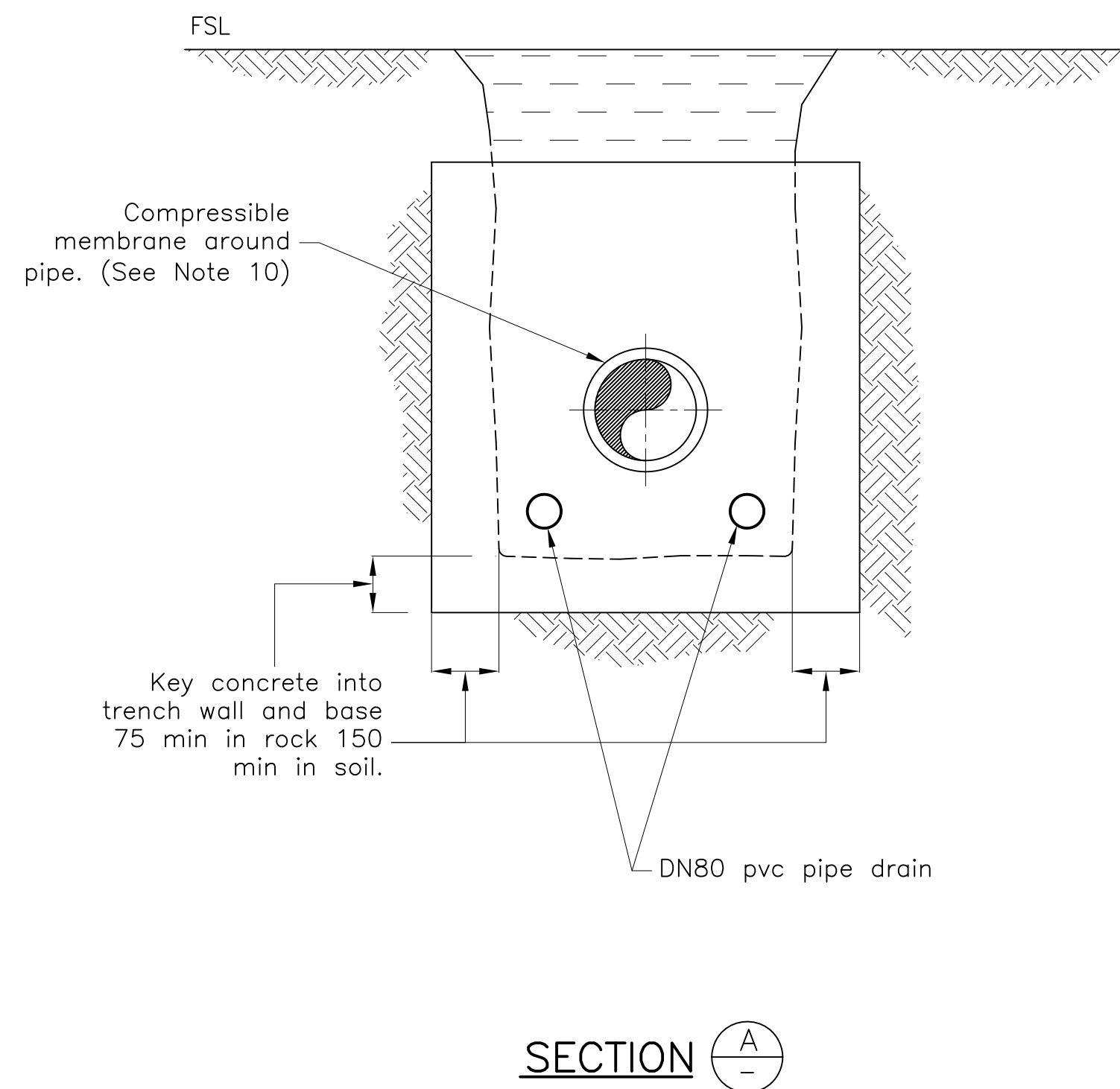


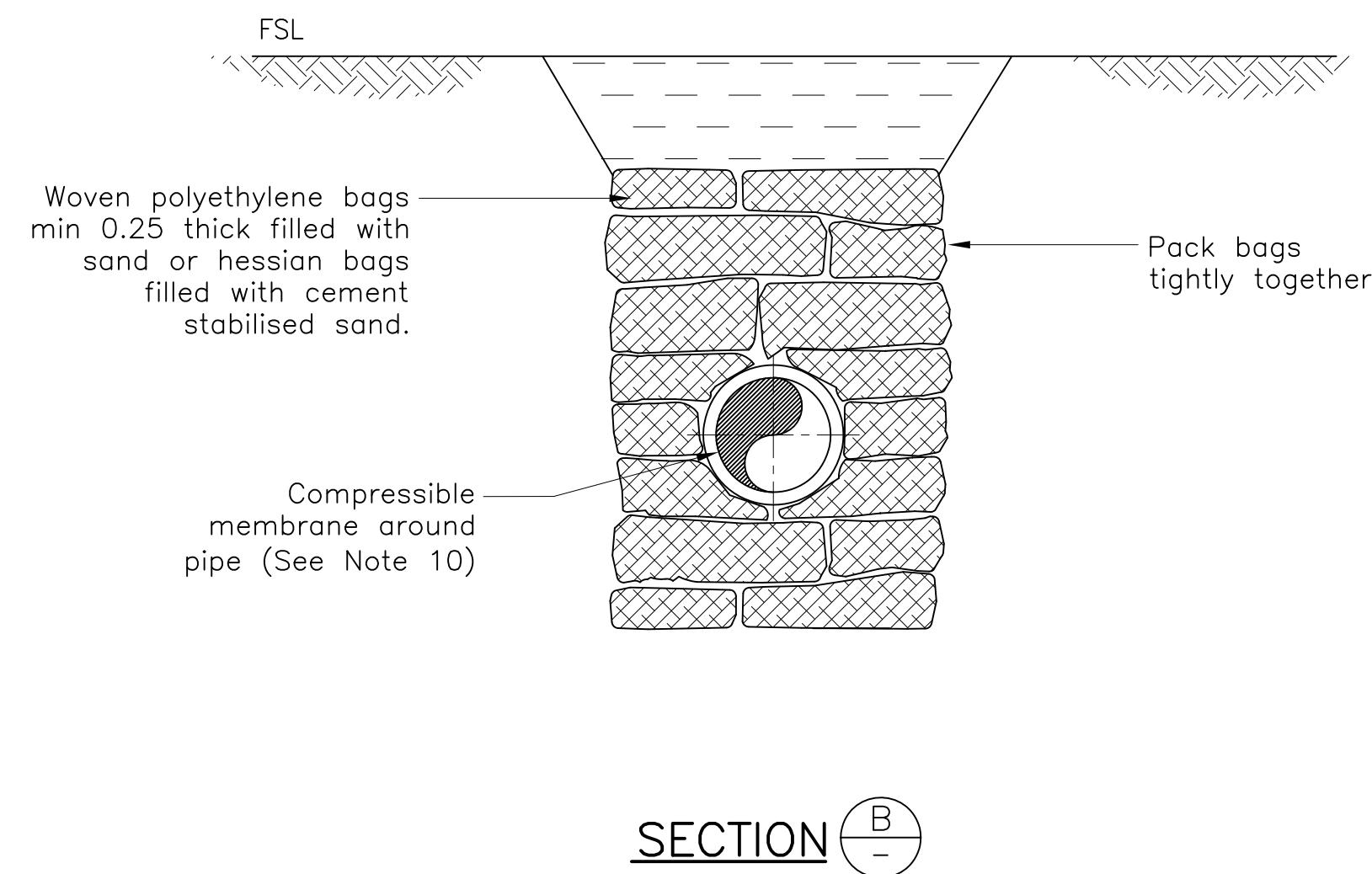
CONCRETE BULKHEAD DETAIL



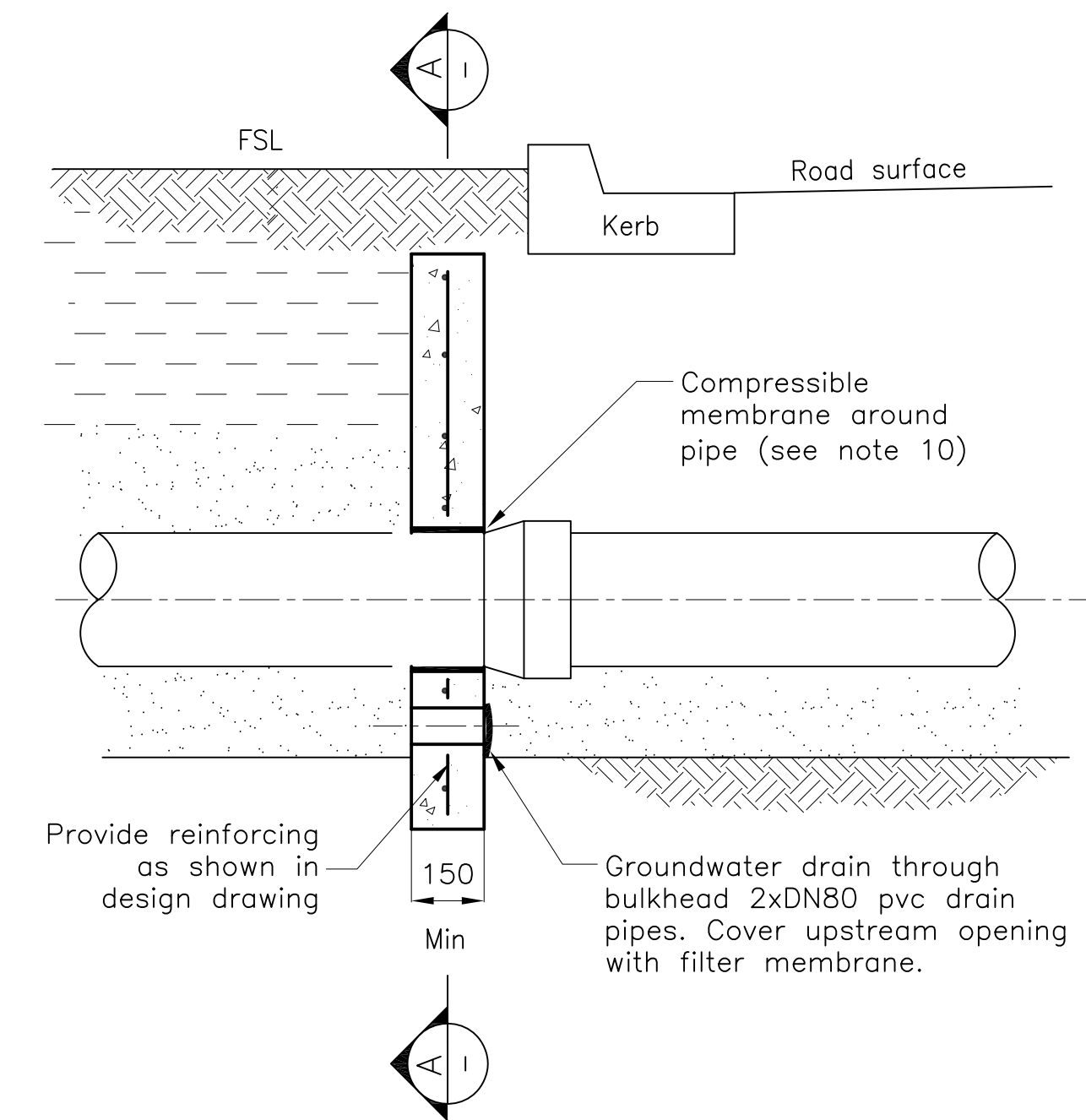
TRENCH STOP DETAIL



SECTION A



SECTION B



TYPICAL ROAD CROSSING BULKHEAD

NOTES

1. All dimensions in millimetres.
2. Construct concrete bulkheads and trench stops at locations specified in design drawings.
3. Construct bulkhead adjacent to kerb and gutter shoulder of sealed roads.
4. Locate bulkhead at a retaining wall under the wall.
5. Key concrete bulkheads into sides and bottom of trench against a bearing surface of undisturbed soil.
6. Concrete to be class N25.
7. Do not deform pipes during placement of concrete.
8. Seal bags to prevent leakage of contained material.
9. Provide continuous drainage path
 - Through bulkheads and trenchstops
 - Around maintenance holes
 - In trench excavations across roadways.
- Trench drainage to be in accordance with SD-483.
10. Compressible membrane around pipe to be 10 thick polystyrene for bulkheads adjacent to kerbs and 3 min thick rubber for bulkheads and trenchstops on slopes.
11. For slopes >30% continuously encase the pipe in concrete to prevent movement and transfer of ground water. Joints to be wrapped with geotextile fabric to prevent damage to RRJ.

NOTES : BASED ON FORMER WSAА DRAWING SEW-1206

Full Size A1

DRAWN: DESIGN OFFICE

CHECKED: D. MOSELEY

Not to Scale

Design Engineer Approved: Original signed by P. TURL

Date: 26/07/2012

Manager Approved: Original signed by P. MENDIOLEA

Date: 26/07/2012



Ph: (07) 4727 9000
www.townsville.qld.gov.au

TRENCH DRAINAGE
BULKHEADS AND TRENCHSTOP

STANDARD
DRAWING
SEWERAGE

SD-482 | A

No.	DATE	DESCRIPTION	AP'D
A		ORIGINAL ISSUE	
REVISIONS			