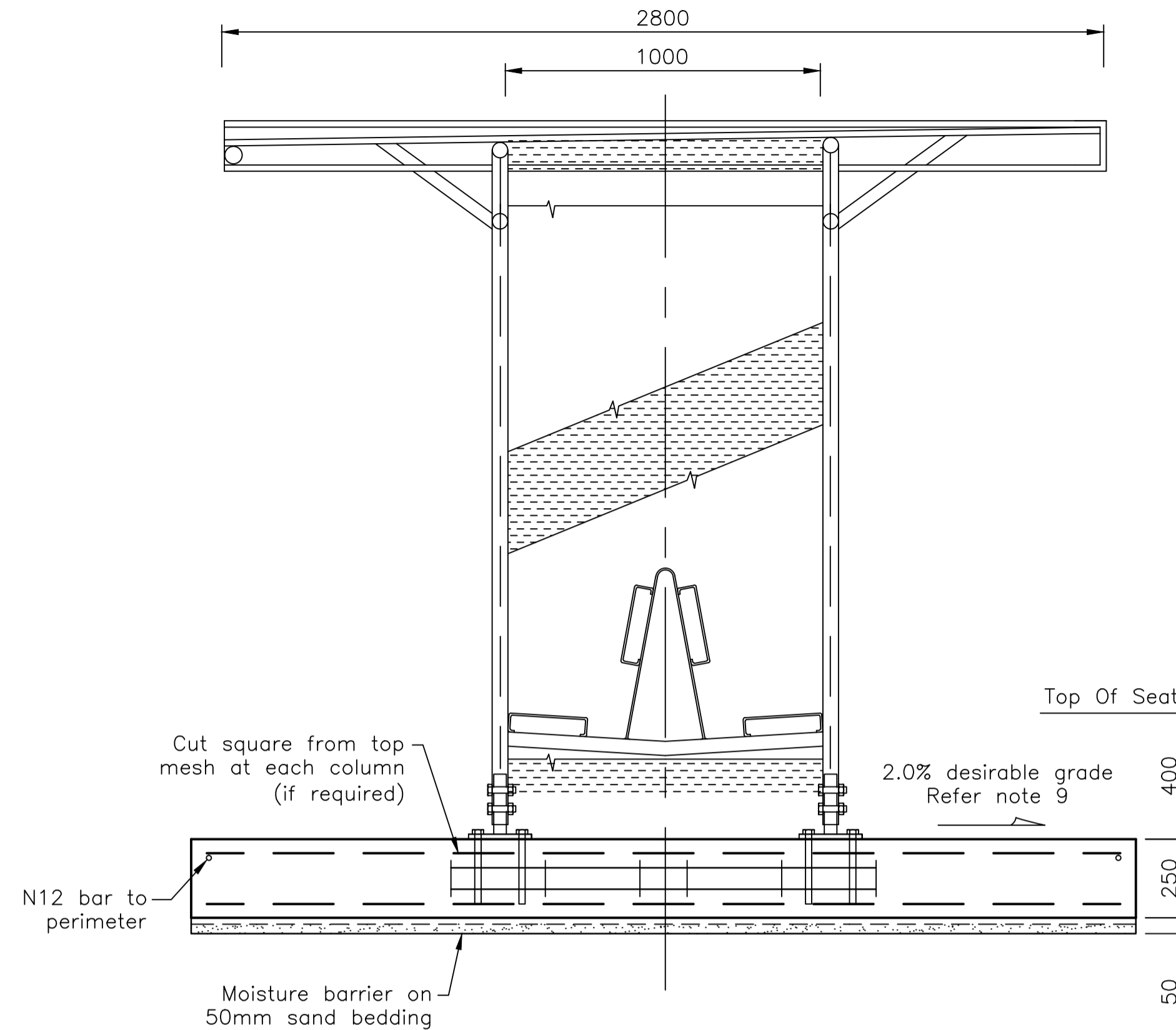
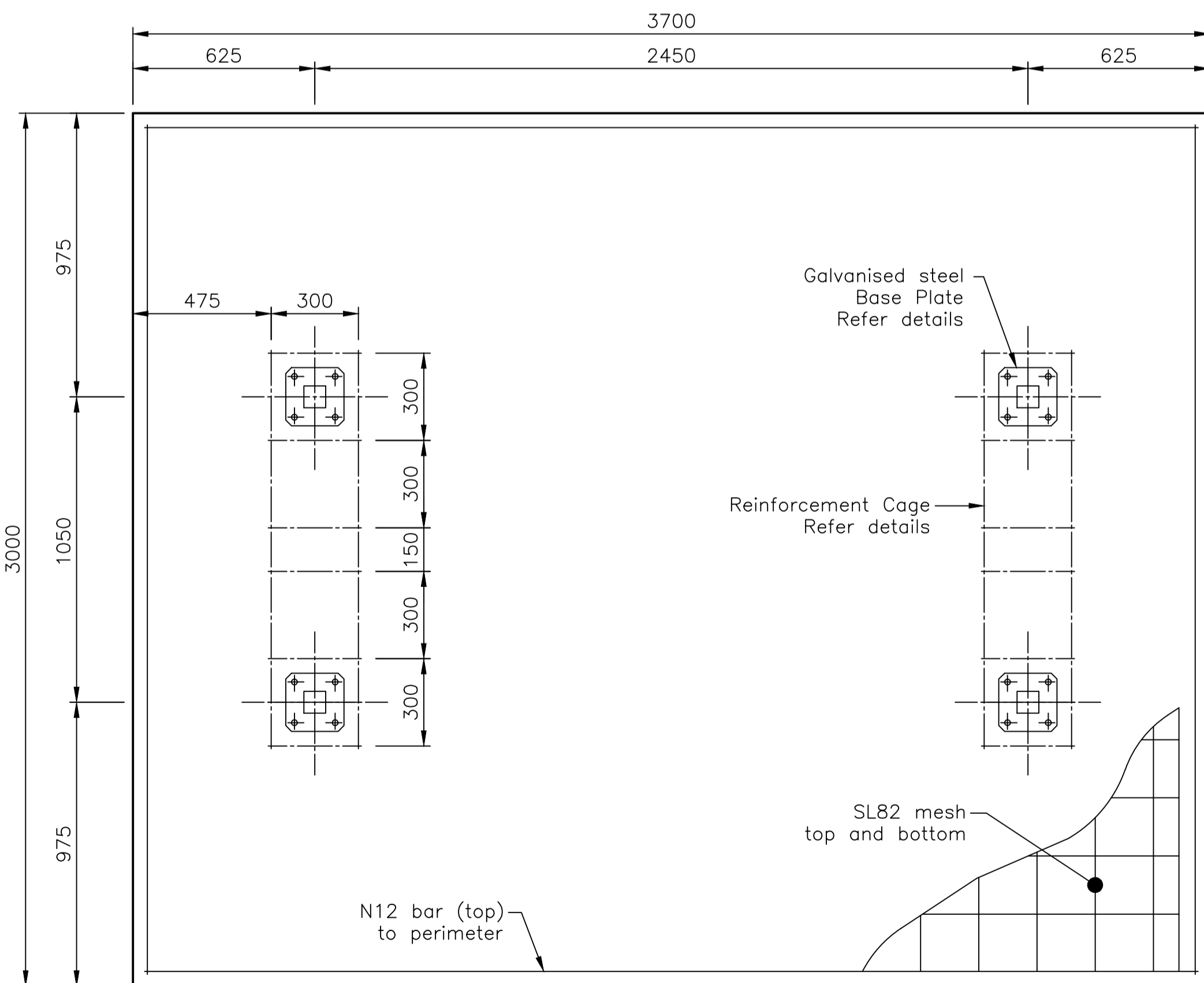


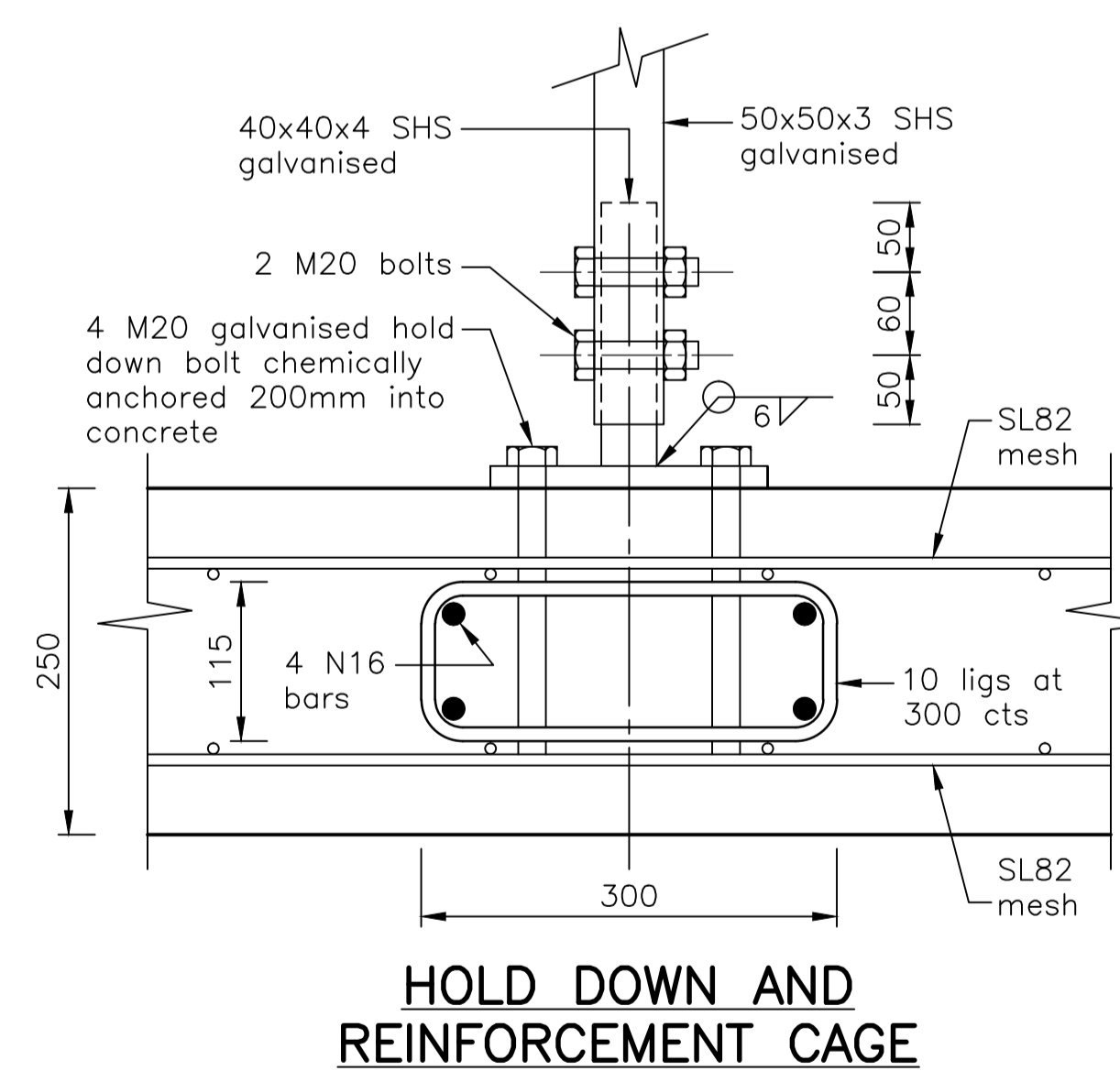
ELEVATION



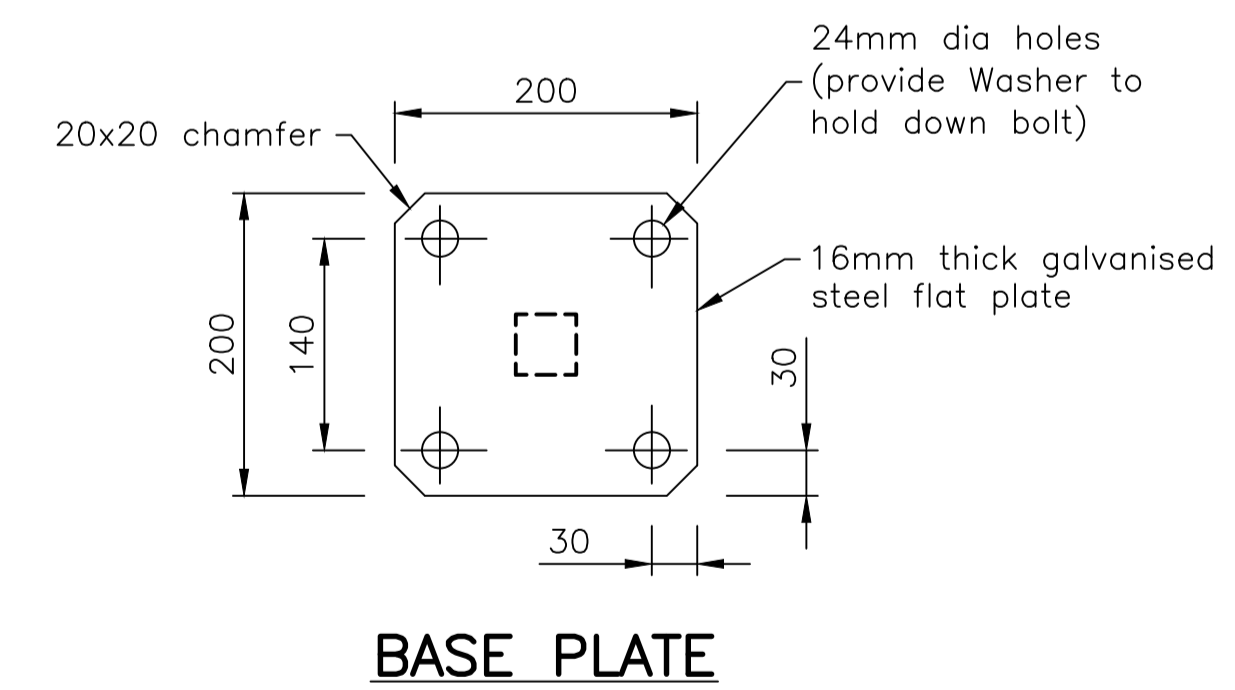
SECTION A



SLAB LAYOUT



HOLD DOWN AND REINFORCEMENT CAGE



BASE PLATE

NOTES GENERAL

- All dimensions are in millimetres unless otherwise noted.
- Do not scale these drawings. Use figured dimensions.
- The Contractor shall check, verify on site and be responsible for the correctness of all dimensions shown on the drawings and discrepancies shall be reported immediately to the Superintendent before any work proceeds.
- These drawings shall be read in conjunction with all other drawings and specifications and with such other written instructions as may be issued during the course of construction. All discrepancies shall be reported immediately for decision before proceeding with the project.
- All workmanship and materials shall be in accordance with the requirements of the Townsville City Council Design Specifications and Construction standards, Standards Australia Codes and the by-laws and ordinances of the relevant authorities.
- During construction any structure and neighbouring structures shall be maintained in a stable condition, ensuring no parts are overstressed.
- It is the contractors responsibility to ensure that the project is carried out in accordance with the drawings and specifications.
- All welds to be 6mm fillet.

CONCRETE

- All concrete N32 unless noted otherwise.
- Concrete cover to reinforcement shall be 50mm unless noted otherwise.
- All concrete must be cured in accordance with the following:
 - AS3600
 - Aliphatic alcohol must be used. The aliphatic alcohol should be applied after screeding and bull floating operations.
 - No water should be added to concrete.
 - An impermeable membrane should be applied. All joints in membrane are to be taped and the edges secured to prevent the ingress of air.
 - Minimum curing period shall be not less than 7 days for strength grade N32 and not less than 4 days for high early strength concrete.
- Exposed edges of formed concrete elements shall have a 20mm chamfer unless noted otherwise.
- All concrete shall be mechanically vibrated. Hand held vibrators must be held upright. Concrete must not be spread using vibrator.

BUS STOP LAYOUT

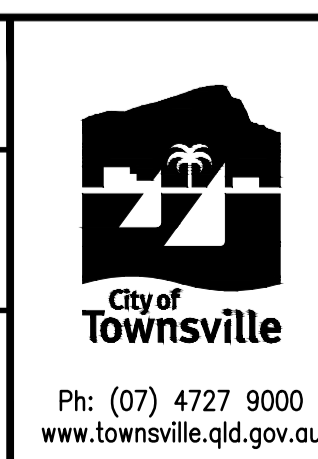
- Bus Stop slab crossfall
 - 1.0% minimum
 - 2.0% desirable
 - 2.5% maximum

No.	DATE	DESCRIPTION	AP'D
A	13/1/2015	ORIGINAL ISSUE	
REVISIONS			

NOTES :
 REFERENCE DRAWINGS
 SD-555 - BUS SETDOWN RURAL LOCATION LAYOUT DETAILS
 SUPERSEDES COT DRAWINGS TR13D, 10028A AND 10120

Full Size A1
 Not to scale

DRAWN: DESIGN OFFICE
 CHECKED: WJP
 Design Engineer Approved: Original signed by T MESSER
 (RPEQ9985) Northern Consulting Engineers
 Date: 13/1/2015
 Manager Approved: Original signed by J CLARKE
 Date: 15/1/2015



**STANDARD-COUNTRY BUS SHELTER
 INSTALLATION DETAILS**

**STANDARD
 DRAWING
 TRANSPORT**
 SD-570 | A