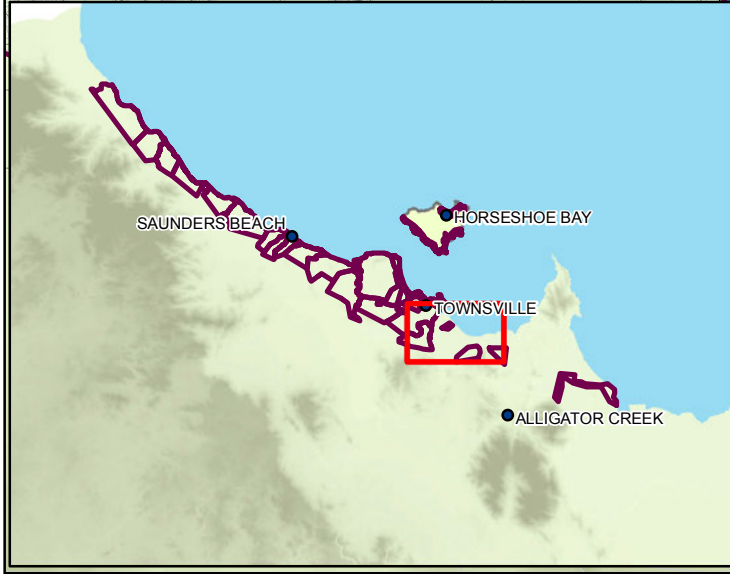
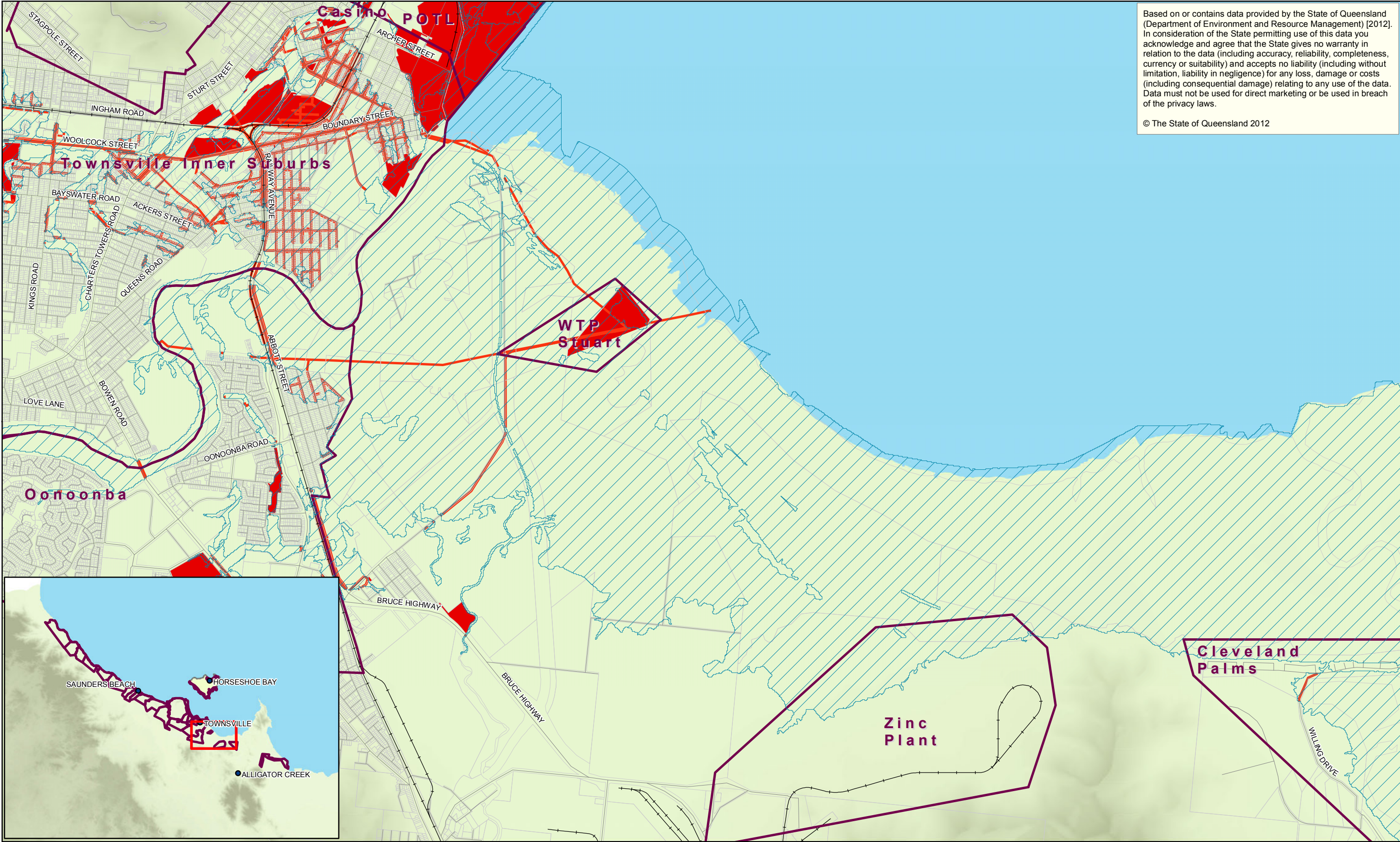


Based on or contains data provided by the State of Queensland (Department of Environment and Resource Management) [2012]. In consideration of the State permitting use of this data you acknowledge and agree that the State gives no warranty in relation to the data (including accuracy, reliability, completeness, currency or suitability) and accepts no liability (including without limitation, liability in negligence) for any loss, damage or costs (including consequential damage) relating to any use of the data. Data must not be used for direct marketing or be used in breach of the privacy laws.

© The State of Queensland 2012





Based on or contains data provided by the State of Queensland (Department of Environment and Resource Management) [2012]. In consideration of the State permitting use of this data you acknowledge and agree that the State gives no warranty in relation to the data (including accuracy, reliability, completeness, currency or suitability) and accepts no liability (including without limitation, liability in negligence) for any loss, damage or costs (including consequential damage) relating to any use of the data. Data must not be used for direct marketing or be used in breach of the privacy laws.

© The State of Queensland 2012

1:40,000 @ A3

0 250 500 750 1,000

Metres

Map Projection: Transverse Mercator
Horizontal Datum: GDA 1994
Grid: GDA 1994 MGA Zone 55

N

LEGEND

- Town / Locality
- Road
- Railway
- Urban Locality
- Properties Boundary
- HAT 2100 Condition (0.8m SLR)

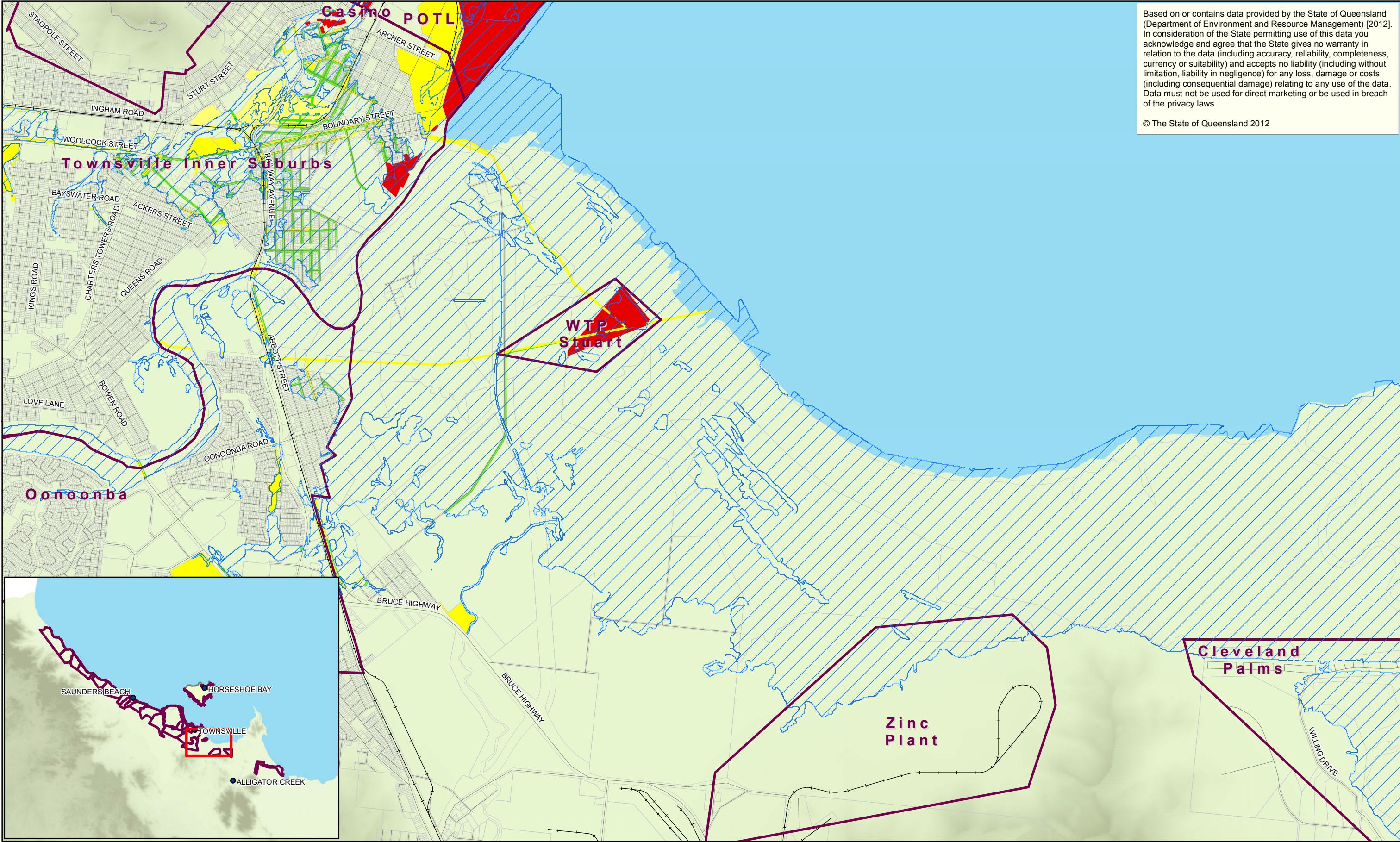
Risk to Infrastructure

- Tolerable Risk
- Unacceptable Risk

Townsville City Council
Coastal Hazard Adaptation Strategy
Tidal Influence -
2100 Conditions (0.8m SLR)
Risk To Infrastructure
District: Stuart

Job Number 41-24609
Revision A
Date 12 Oct 2012

Map Series A6
Sheet 9 of 11



Based on or contains data provided by the State of Queensland (Department of Environment and Resource Management) [2012]. In consideration of the State permitting use of this data you acknowledge and agree that the State gives no warranty in relation to the data (including accuracy, reliability, completeness, currency or suitability) and accepts no liability (including without limitation, liability in negligence) for any loss, damage or costs (including consequential damage) relating to any use of the data. Data must not be used for direct marketing or be used in breach of the privacy laws.

© The State of Queensland 2012

1:40,000 @ A3

0 250 500 750 1,000

Metres

Map Projection: Transverse Mercator
Horizontal Datum: GDA 1994
Grid: GDA 1994 MGA Zone 55

N

LEGEND

- Town / Locality
- Road
- Railway
- Urban Locality
- Properties Boundary
- Storm Tide Event
- Current Conditions (2012)

Risk to Infrastructure

- Acceptable Risk
- Tolerable Risk
- Unacceptable Risk

Queensland Government

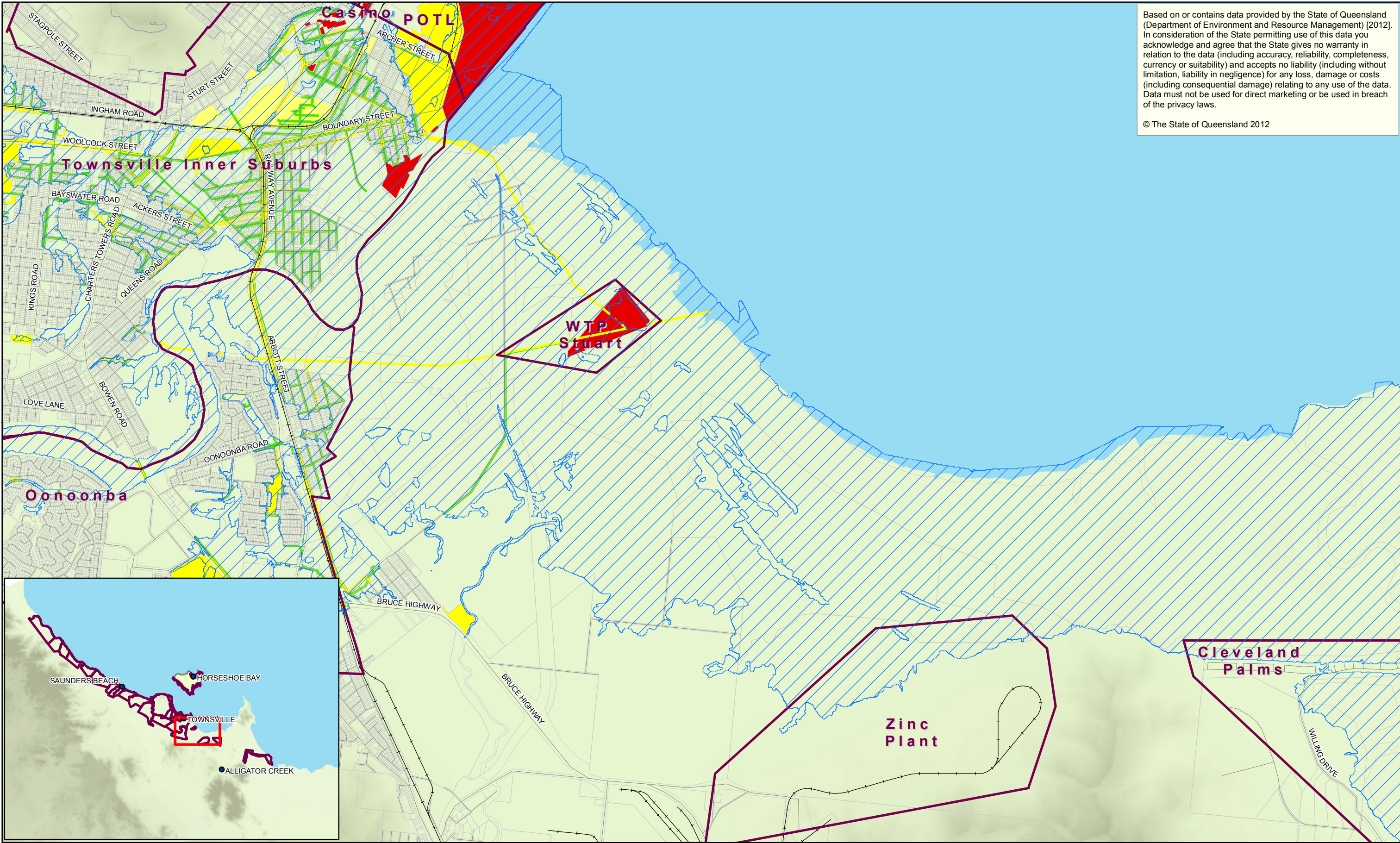
GHD

City of Townsville

Townsville City Council
Coastal Hazard Adaptation Strategy
Storm Tide -
Current Conditions (2012)
Risk To Infrastructure
District: Stuart

Job Number 41-24609
Revision A
Date 12 Oct 2012

Map Series A7
Sheet 9 of 11



Based on or contains data provided by the State of Queensland (Department of Environment and Resource Management) [2012]. In consideration of the State permitting use of this data you acknowledge and agree that the State gives no warranty in relation to the data (including accuracy, reliability, completeness, currency or suitability) and accepts no liability (including without limitation, liability in negligence) for any loss, damage or costs (including consequential damage) relating to any use of the data. Data must not be used for direct marketing or be used in breach of the privacy laws.

© The State of Queensland 2012

1:40,000 @ A3

0 250 500 750 1,000

Metres

Map Projection: Transverse Mercator
Horizontal Datum: GDA 1994
Grid: GDA 1994 MGA Zone 55

N

LEGEND

- Town / Locality
- Road
- Railway
- Urban Locality
- Properties Boundary
- 100 y Return Period Storm Tide Event 2100 Condition (0.8m SLR)

Risk to Infrastructure

- Acceptable Risk
- Tolerable Risk
- Unacceptable Risk

Queensland Government

GHD

City of Townsville

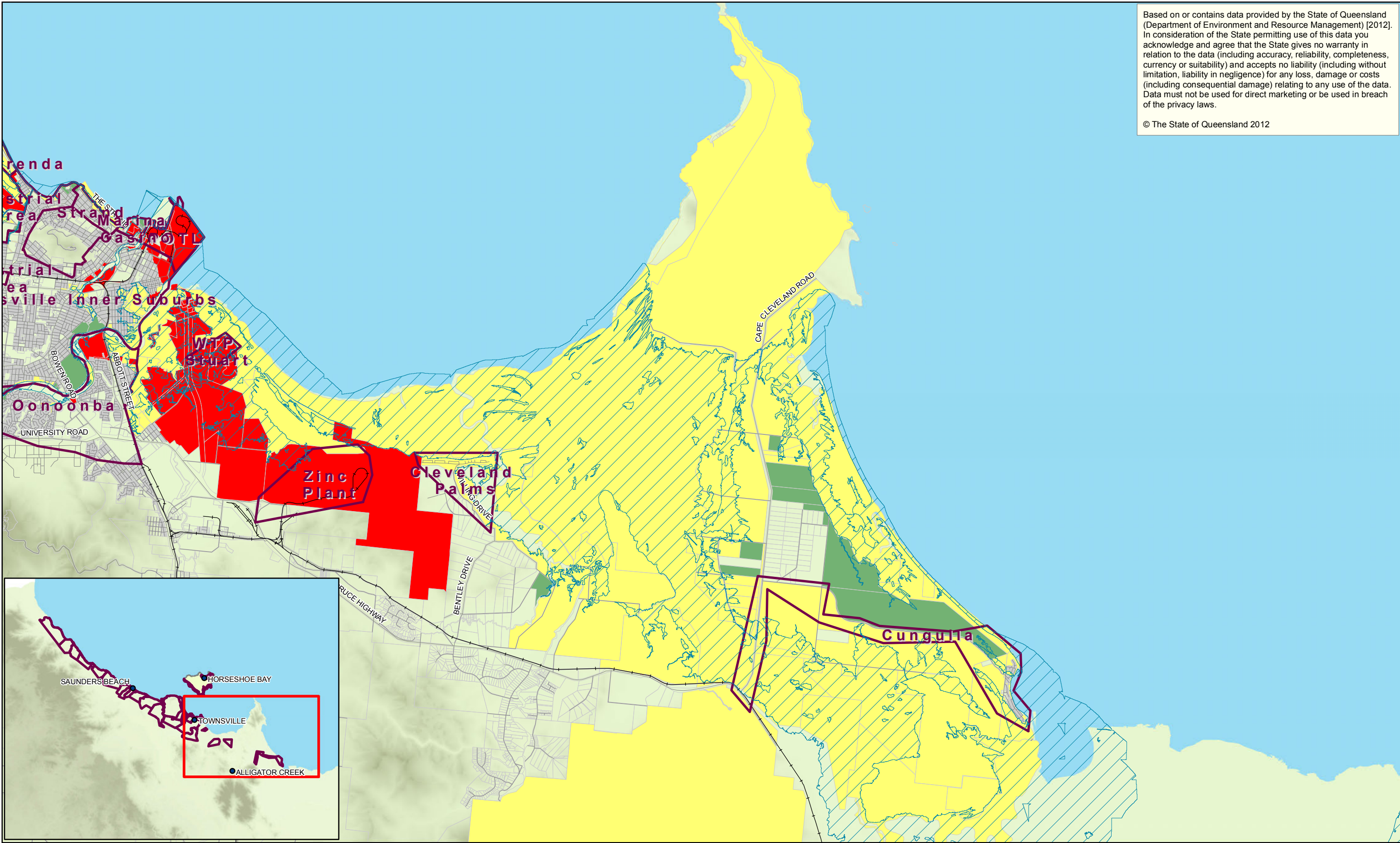
Townsville City Council
Coastal Hazard Adaptation Strategy
Storm Tide -
2100 Conditions (0.8m SLR)
Risk To Infrastructure
District: Stuart

Job Number 41-24609
Revision A
Date 12 Oct 2012

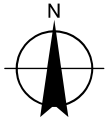
Map Series A8
Sheet 9 of 11

Based on or contains data provided by the State of Queensland (Department of Environment and Resource Management) [2012]. In consideration of the State permitting use of this data you acknowledge and agree that the State gives no warranty in relation to the data (including accuracy, reliability, completeness, currency or suitability) and accepts no liability (including without limitation, liability in negligence) for any loss, damage or costs (including consequential damage) relating to any use of the data. Data must not be used for direct marketing or be used in breach of the privacy laws.

© The State of Queensland 2012



1:120,000 @ A3
0 1,250 2,500 3,750 5,000
Metres
Map Projection: Transverse Mercator
Horizontal Datum: GDA 1994
Grid: GDA 1994 MGA Zone 55



LEGEND

- Town / Locality
- Road
- Railway
- HAT (2012)
- Urban Locality
- Properties Boundary

Risk to Property

- Acceptable Risk
- Tolerable Risk
- Unacceptable Risk



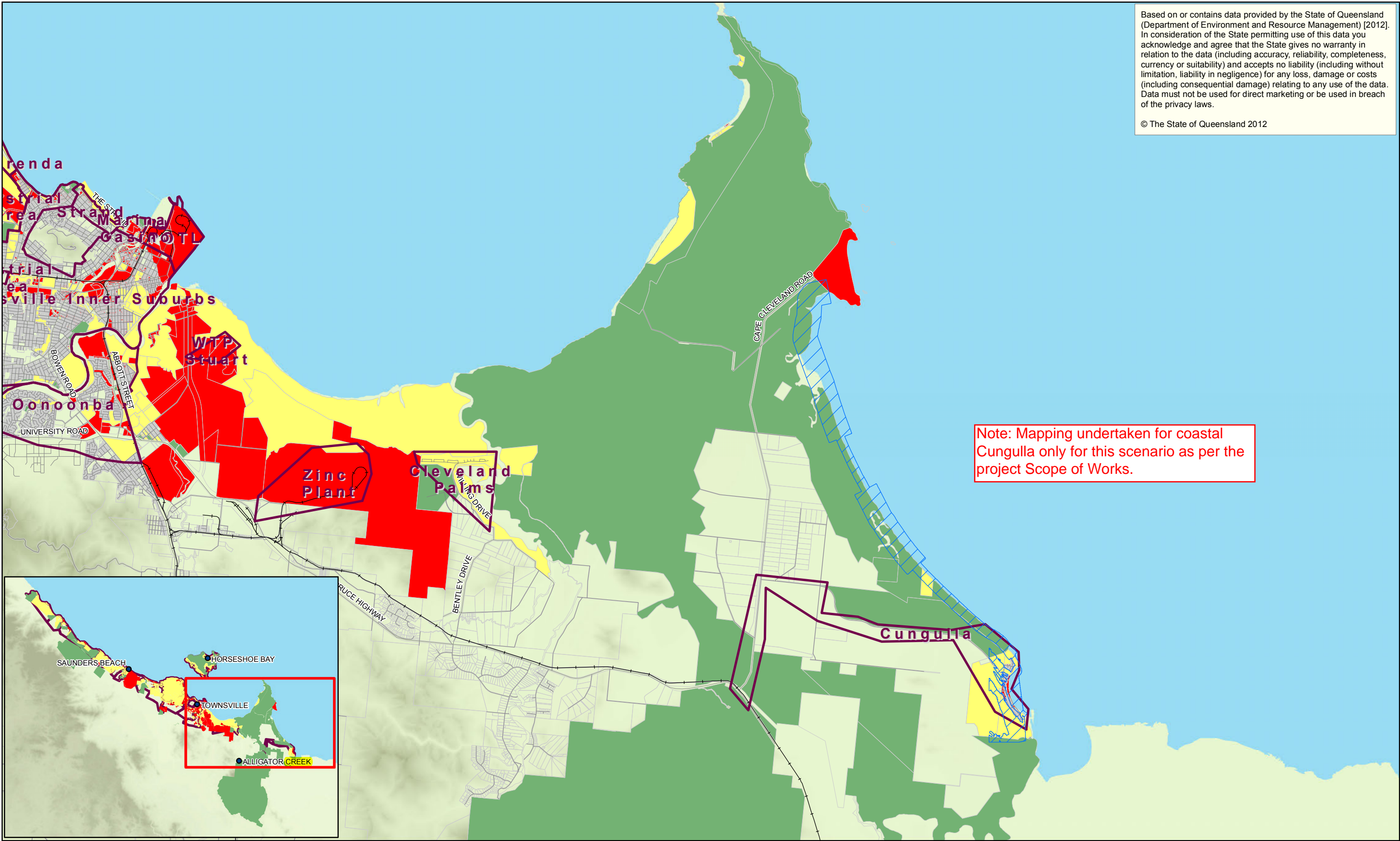
Townsville City Council
Coastal Hazard Adaptation Strategy
Tidal Influence -
Current Conditions (2012)
Risk To Property
District: South Land

Job Number 41-24609
Revision A
Date 12 Oct 2012

Map Series A1
Sheet 10 of 11

Based on or contains data provided by the State of Queensland (Department of Environment and Resource Management) [2012]. In consideration of the State permitting use of this data you acknowledge and agree that the State gives no warranty in relation to the data (including accuracy, reliability, completeness, currency or suitability) and accepts no liability (including without limitation, liability in negligence) for any loss, damage or costs (including consequential damage) relating to any use of the data. Data must not be used for direct marketing or be used in breach of the privacy laws.

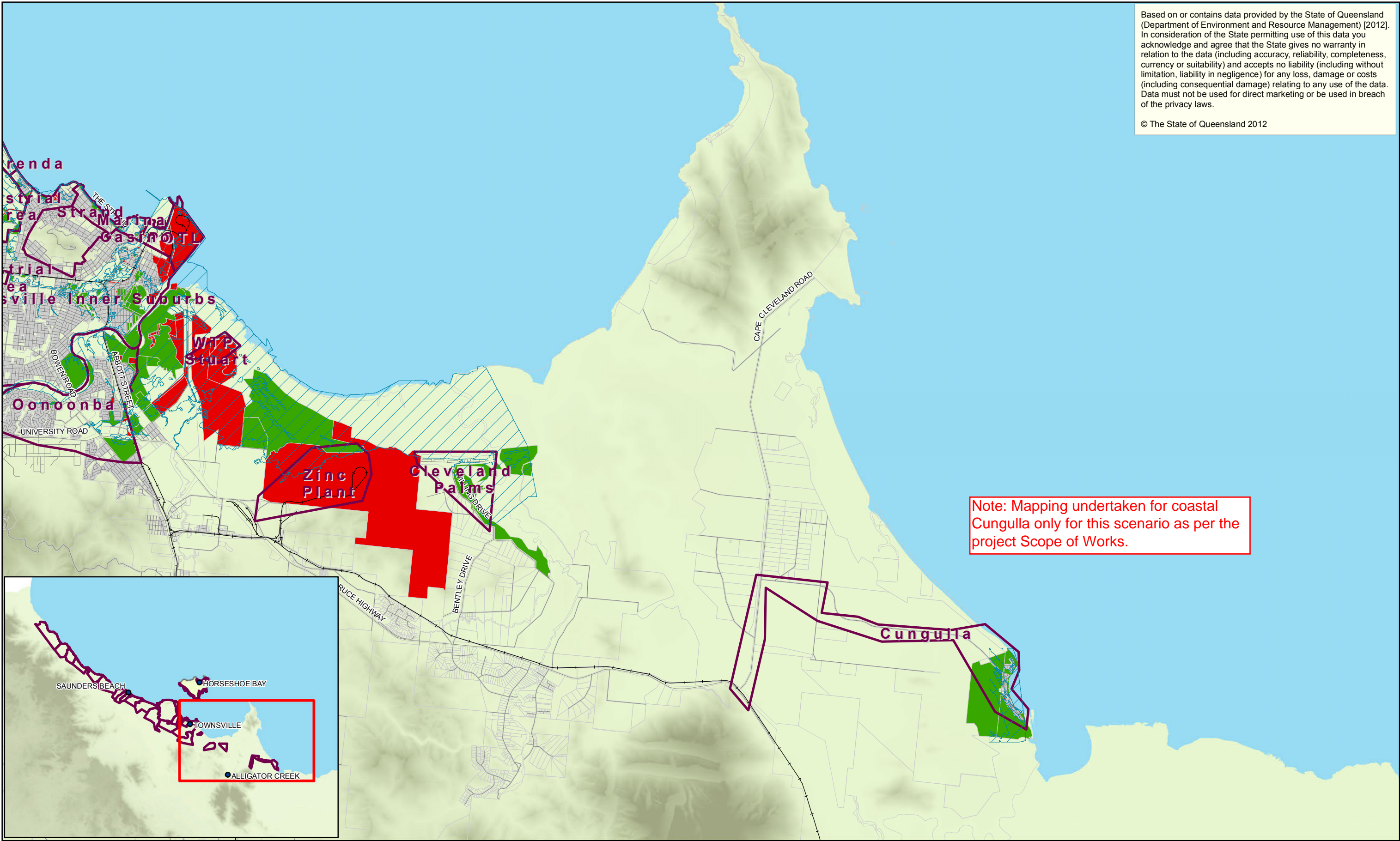
© The State of Queensland 2012



Note: Mapping undertaken for coastal Cunggulla only for this scenario as per the project Scope of Works.

Based on or contains data provided by the State of Queensland (Department of Environment and Resource Management) [2012]. In consideration of the State permitting use of this data you acknowledge and agree that the State gives no warranty in relation to the data (including accuracy, reliability, completeness, currency or suitability) and accepts no liability (including without limitation, liability in negligence) for any loss, damage or costs (including consequential damage) relating to any use of the data. Data must not be used for direct marketing or be used in breach of the privacy laws.

© The State of Queensland 2012



Note: Mapping undertaken for coastal Cunggulla only for this scenario as per the project Scope of Works.

1:120,000 @ A3

0 1,250 2,500 3,750 5,000

Metres

Map Projection: Transverse Mercator
Horizontal Datum: GDA 1994
Grid: GDA 1994 MGA Zone 55

N

LEGEND

- Town / Locality
- Road
- +— Railway
- Urban Locality
- Properties Boundary
- Storm Tide Event
- Current Conditions (2012)

Risk to Property

- Acceptable Risk
- Unacceptable Risk

Queensland Government

GHD

City of Townsville

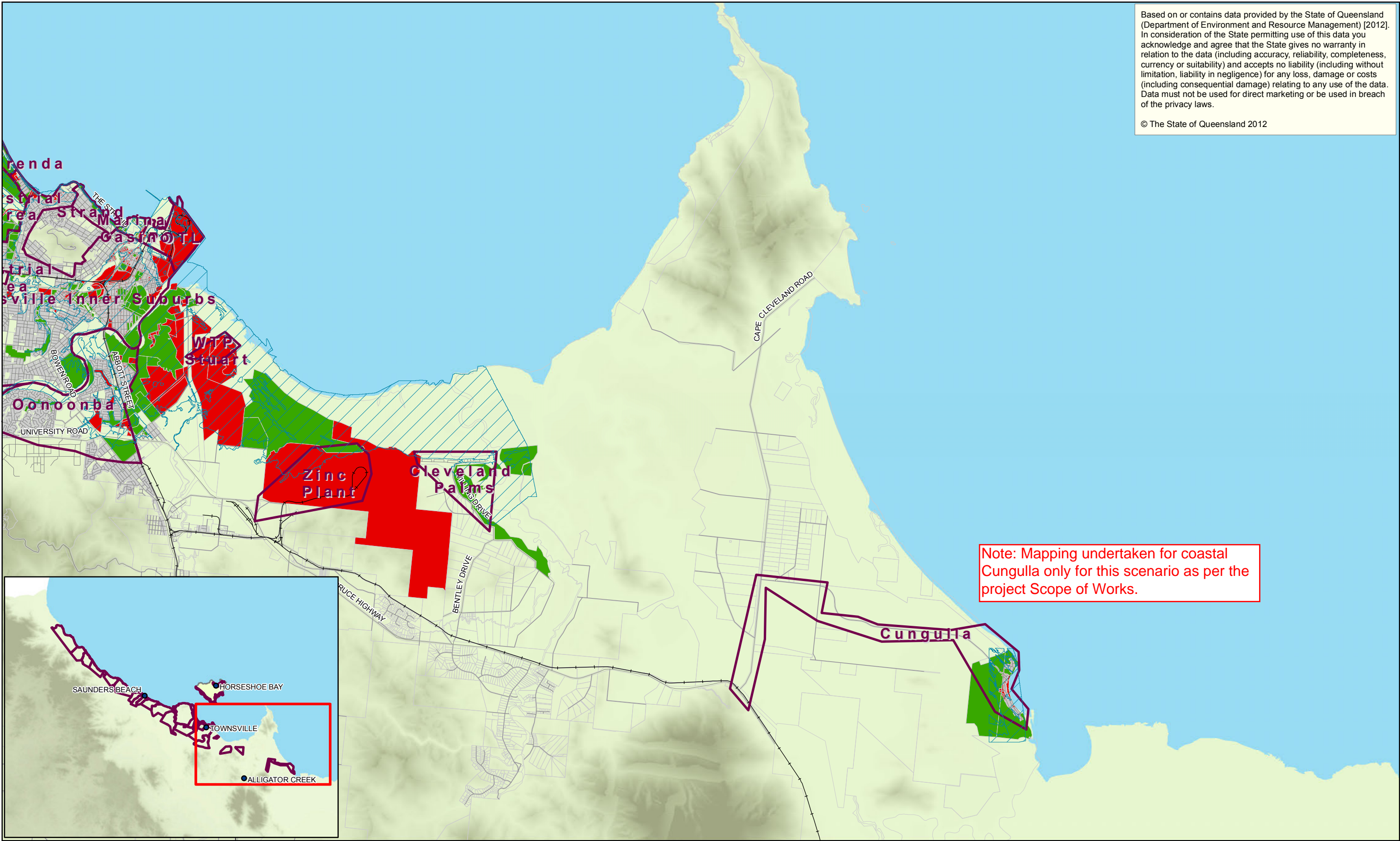
Townsville City Council
Coastal Hazard Adaptation Strategy
Storm Tide -
Current Conditions (2012)
Risk To Property
District: South Land

Job Number 41-24609
Revision A
Date 17 Oct 2012

Map Series A3
Sheet 10 of 11

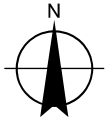
Based on or contains data provided by the State of Queensland (Department of Environment and Resource Management) [2012]. In consideration of the State permitting use of this data you acknowledge and agree that the State gives no warranty in relation to the data (including accuracy, reliability, completeness, currency or suitability) and accepts no liability (including without limitation, liability in negligence) for any loss, damage or costs (including consequential damage) relating to any use of the data. Data must not be used for direct marketing or be used in breach of the privacy laws.

© The State of Queensland 2012



Note: Mapping undertaken for coastal Cunggulla only for this scenario as per the project Scope of Works.

1:120,000 @ A3
0 1,250 2,500 3,750 5,000
Metres
Map Projection: Transverse Mercator
Horizontal Datum: GDA 1994
Grid: GDA 1994 MGA Zone 55



LEGEND

- Town / Locality
- Road
- +— Railway
- District Boundary
- Properties Boundary
- 100 y Return Period Storm Tide Event 2100 Conditions (0.8m SLR)

Risk to Property

- Acceptable Risk
- Unacceptable Risk



Townsville City Council
Coastal Hazard Adaptation Strategy
Storm Tide -
2100 Conditions (0.8m SLR)
Risk To Property
District: South Land

Job Number 41-24609
Revision A
Date 17 Oct 2012

Map Series A4
Sheet 10 of 11

G:\4124609\GIS\Maps\Working\4124609_Stormtide_2100Condition_PropRisk_RevA_20121009.mxd

© 2012. Whilst every care has been taken to prepare this map, GHD, TCC, DERM make no representations or warranties about its accuracy, reliability, completeness or suitability for any particular purpose and cannot accept liability and responsibility of any kind (whether in contract, tort or otherwise) for any expenses, losses, damages and/or costs (including indirect or consequential damage) which are or may be incurred by any party as a result of the map being inaccurate, incomplete or unsuitable in any way and for any reason.
Data source: TCC - Railway, Roads, Properties, Districts (2011). Geoscience Australia - Populated Places (2008). DERM - DEM (2007), Place Names (2010). GHD - Ocean Boundary (2012).

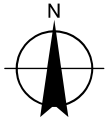
145 Ann Street Brisbane QLD 4000 Australia T 61 7 3316 3000 F 61 7 3316 3333 E bnemail@ghd.com W www.ghd.com

Based on or contains data provided by the State of Queensland (Department of Environment and Resource Management) [2012]. In consideration of the State permitting use of this data you acknowledge and agree that the State gives no warranty in relation to the data (including accuracy, reliability, completeness, currency or suitability) and accepts no liability (including without limitation, liability in negligence) for any loss, damage or costs (including consequential damage) relating to any use of the data. Data must not be used for direct marketing or be used in breach of the privacy laws.

© The State of Queensland 2012



1:120,000 @ A3
0 1,300 2,600 3,900 5,200
Metres
Map Projection: Transverse Mercator
Horizontal Datum: GDA 1994
Grid: GDA 1994 MGA Zone 55



LEGEND

- Town / Locality
- Road
- +— Railway

- HAT (2012)
- Urban Locality
- Properties Boundary

Risk to Infrastructure

- Acceptable Risk
- Unacceptable Risk



Townsville City Council
Coastal Hazard Adaptation Strategy
Tidal Influence -
Current Conditions (2012)
Risk To Infrastructure
District: South Land

Job Number 41-24609
Revision A
Date 12 Oct 2012

Map Series A5

Sheet 10 of 11

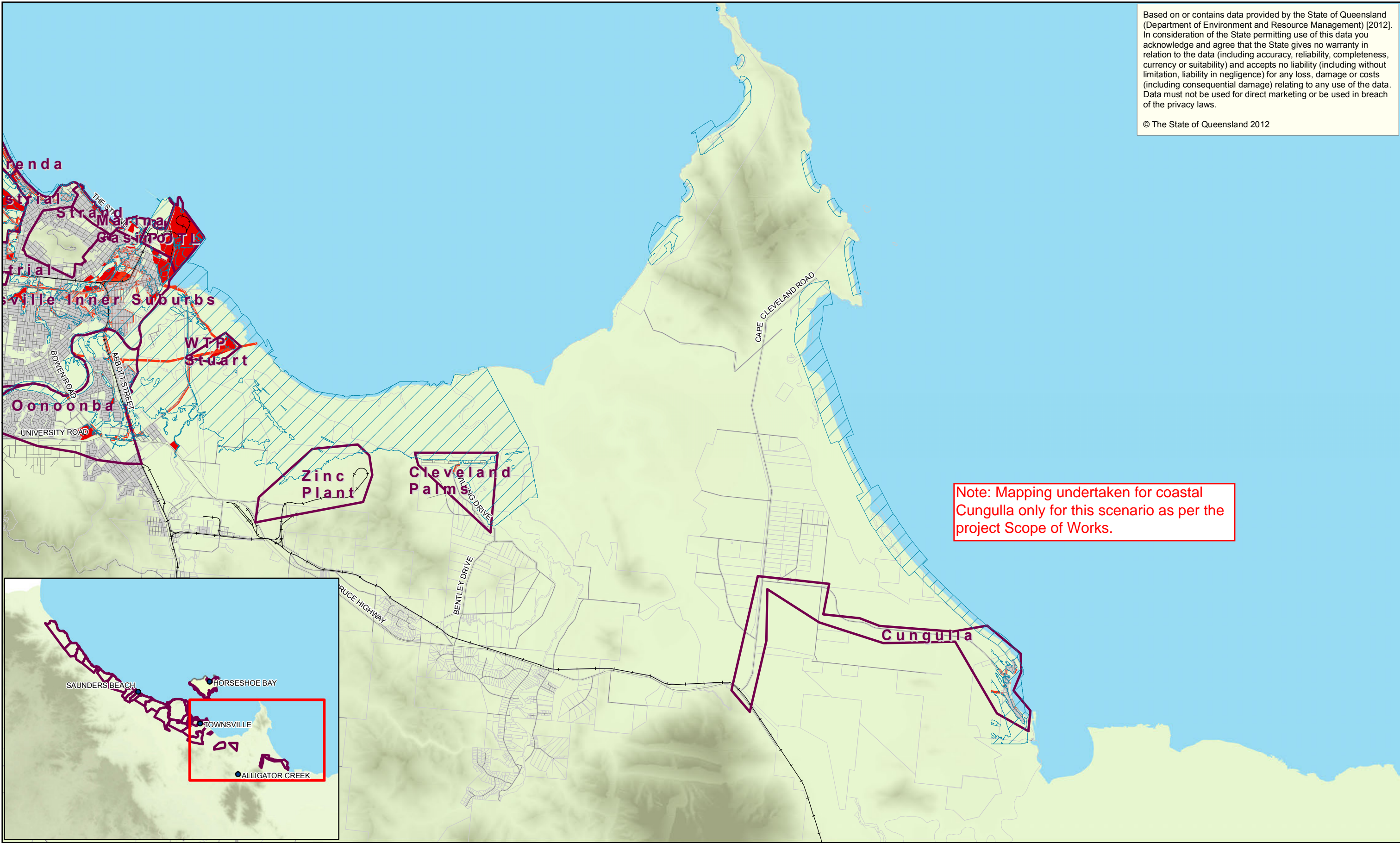
G:\4124609\GIS\Maps\Working\4124609_PermanentHazard_Current2012_InfraRisk_RevA_20121009.mxd

© 2012. Whilst every care has been taken to prepare this map, GHD, TCC, DERM make no representations or warranties about its accuracy, reliability, completeness or suitability for any particular purpose and cannot accept liability and responsibility of any kind (whether in contract, tort or otherwise) for any expenses, losses, damages and/or costs (including indirect or consequential damage) which are or may be incurred by any party as a result of the map being inaccurate, incomplete or unsuitable in any way and for any reason.
Data source: TCC - Railway, Roads, Properties, Districts (2011). Geoscience Australia - Populated Places (2008). DERM - DEM (2007), Place Names (2010). GHD - Ocean Boundary (2012).

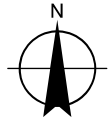
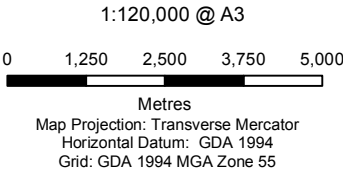
145 Ann Street Brisbane QLD 4000 Australia T 61 7 3316 3000 F 61 7 3316 3333 E bemail@ghd.com W www.ghd.com

Based on or contains data provided by the State of Queensland (Department of Environment and Resource Management) [2012]. In consideration of the State permitting use of this data you acknowledge and agree that the State gives no warranty in relation to the data (including accuracy, reliability, completeness, currency or suitability) and accepts no liability (including without limitation, liability in negligence) for any loss, damage or costs (including consequential damage) relating to any use of the data. Data must not be used for direct marketing or be used in breach of the privacy laws.

© The State of Queensland 2012



Note: Mapping undertaken for coastal Cungulla only for this scenario as per the project Scope of Works.



LEGEND

- Town / Locality
- Road
- +—+ Railway
- Urban Locality
- Properties Boundary
- HAT 2100 Condition (0.8m SLR)

Risk to Infrastructure

- Tolerable Risk
- Unacceptable Risk



Townsville City Council
Coastal Hazard Adaptation Strategy
Tidal Influence -
2100 Conditions (0.8m SLR)
Risk To Infrastructure
District: South Land

Job Number 41-24609
Revision A
Date 12 Oct 2012

Map Series A6
Sheet 10 of 11