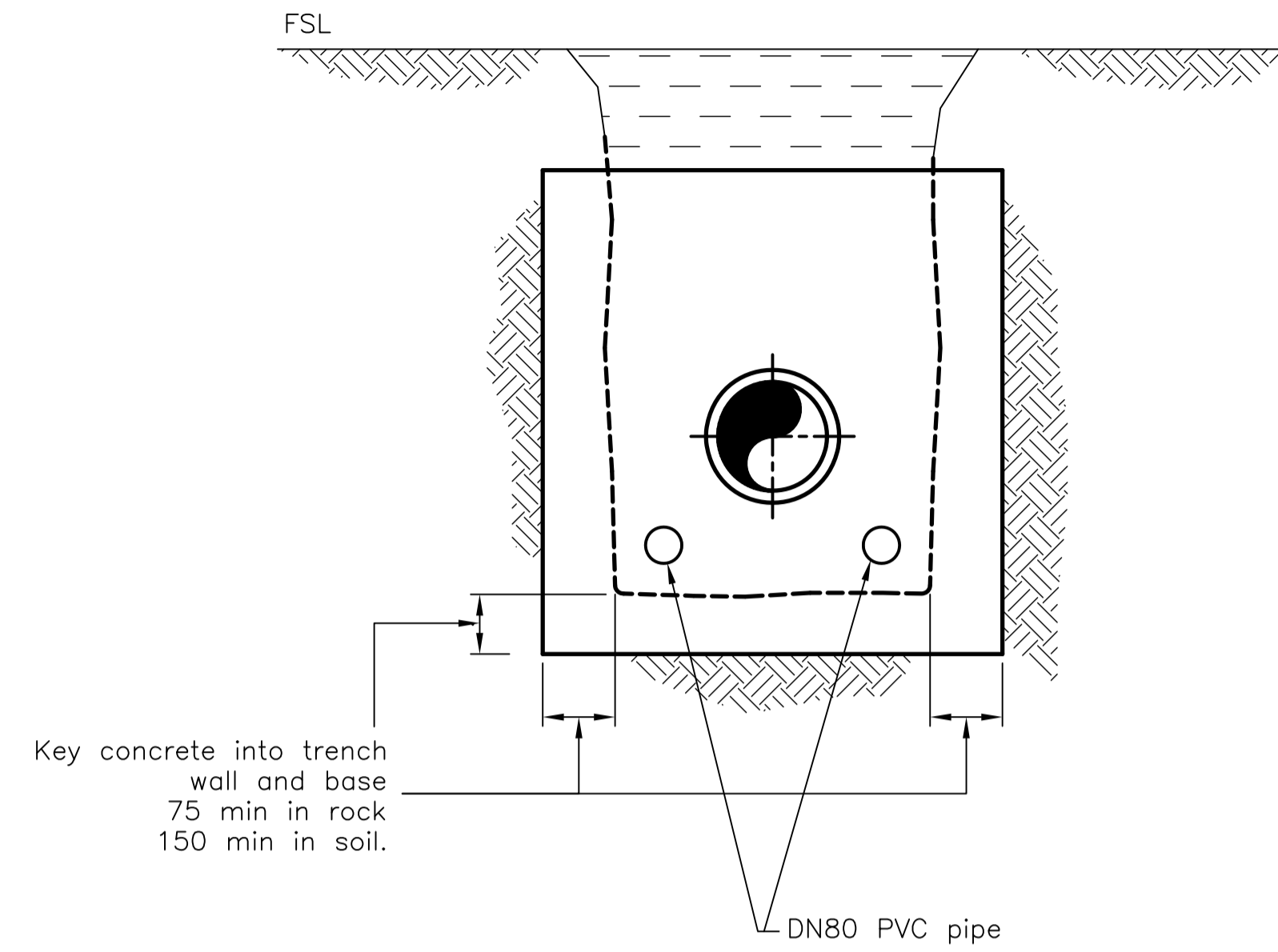
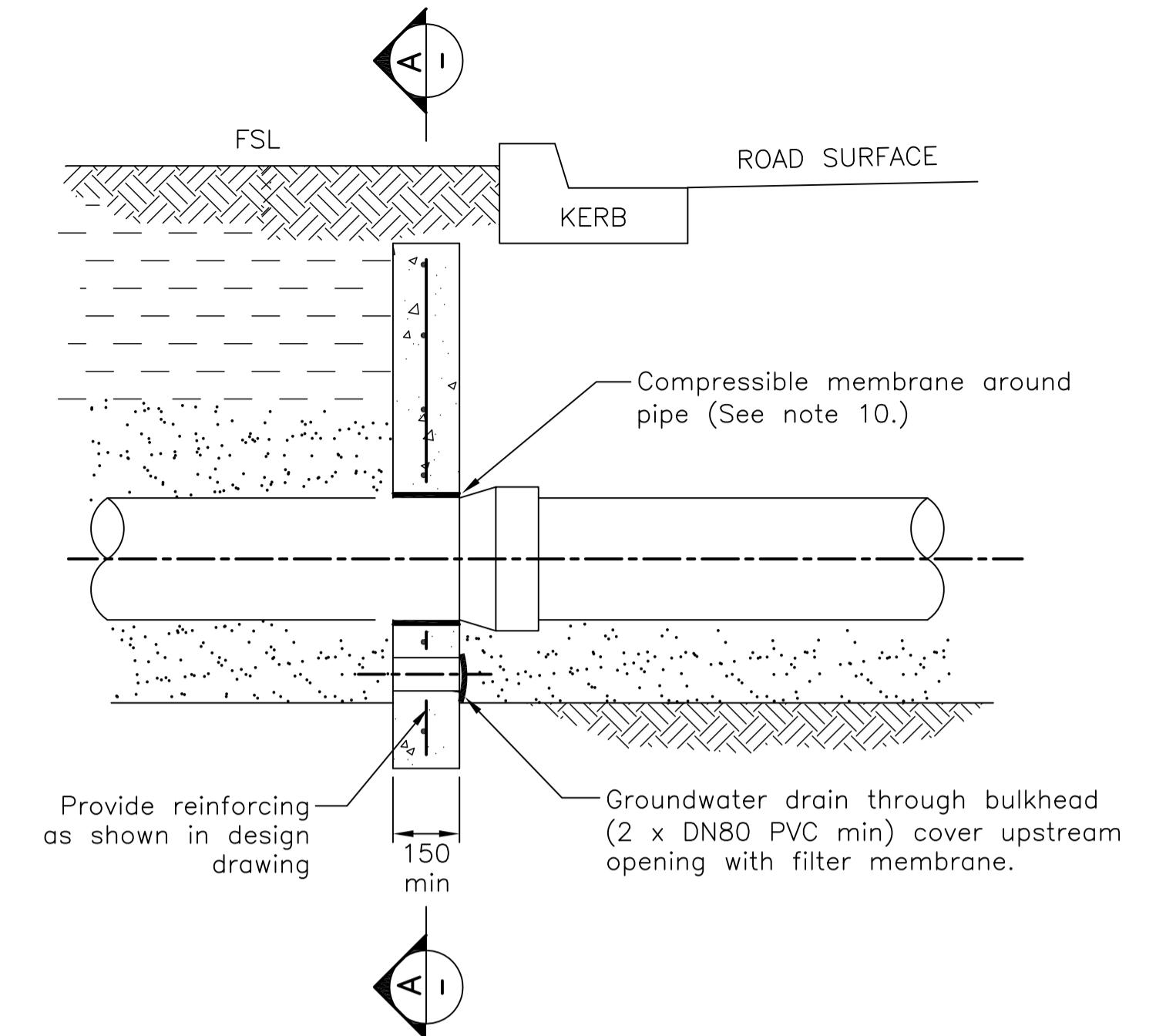


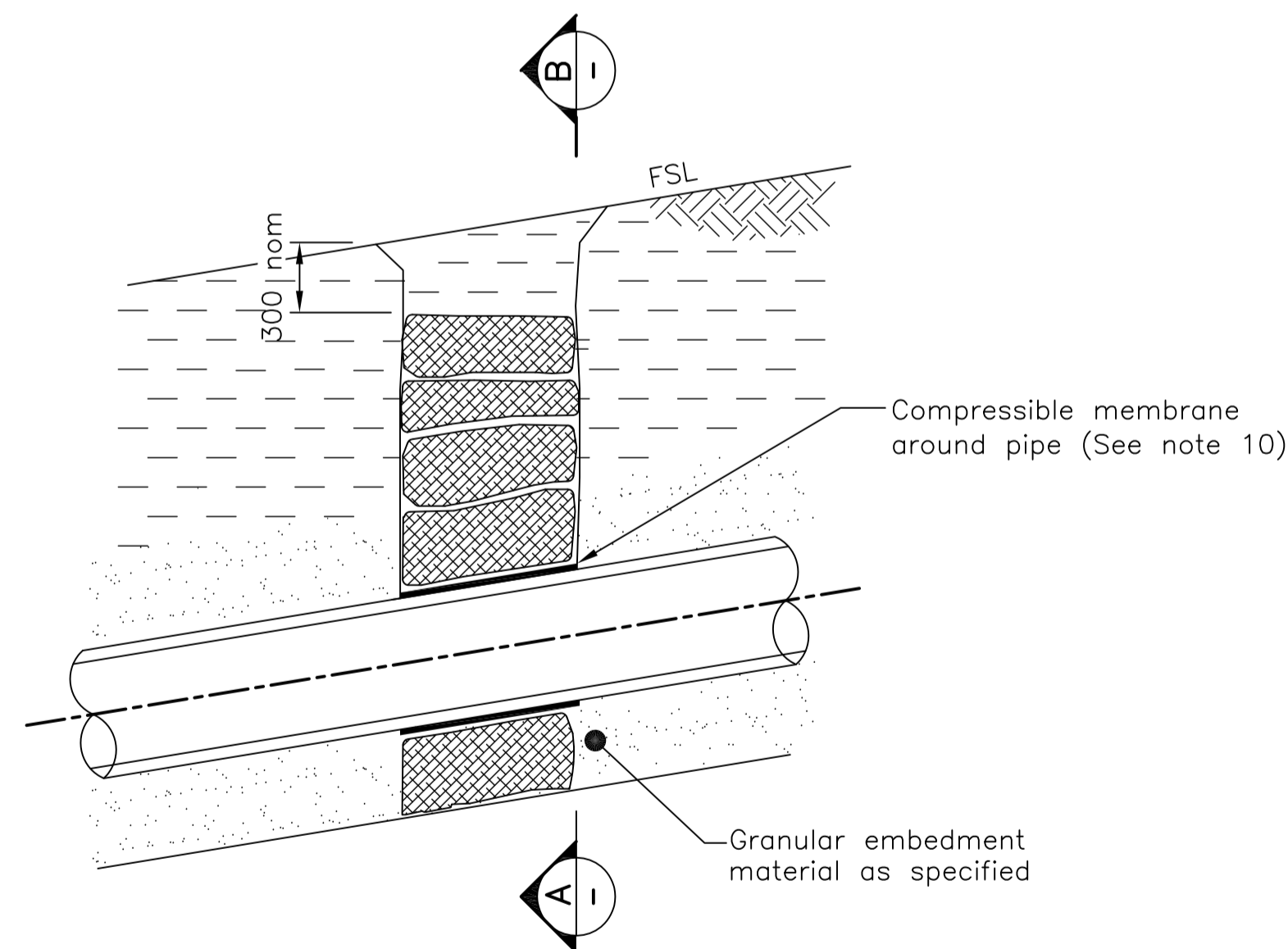
CONCRETE BULKHEAD DETAIL



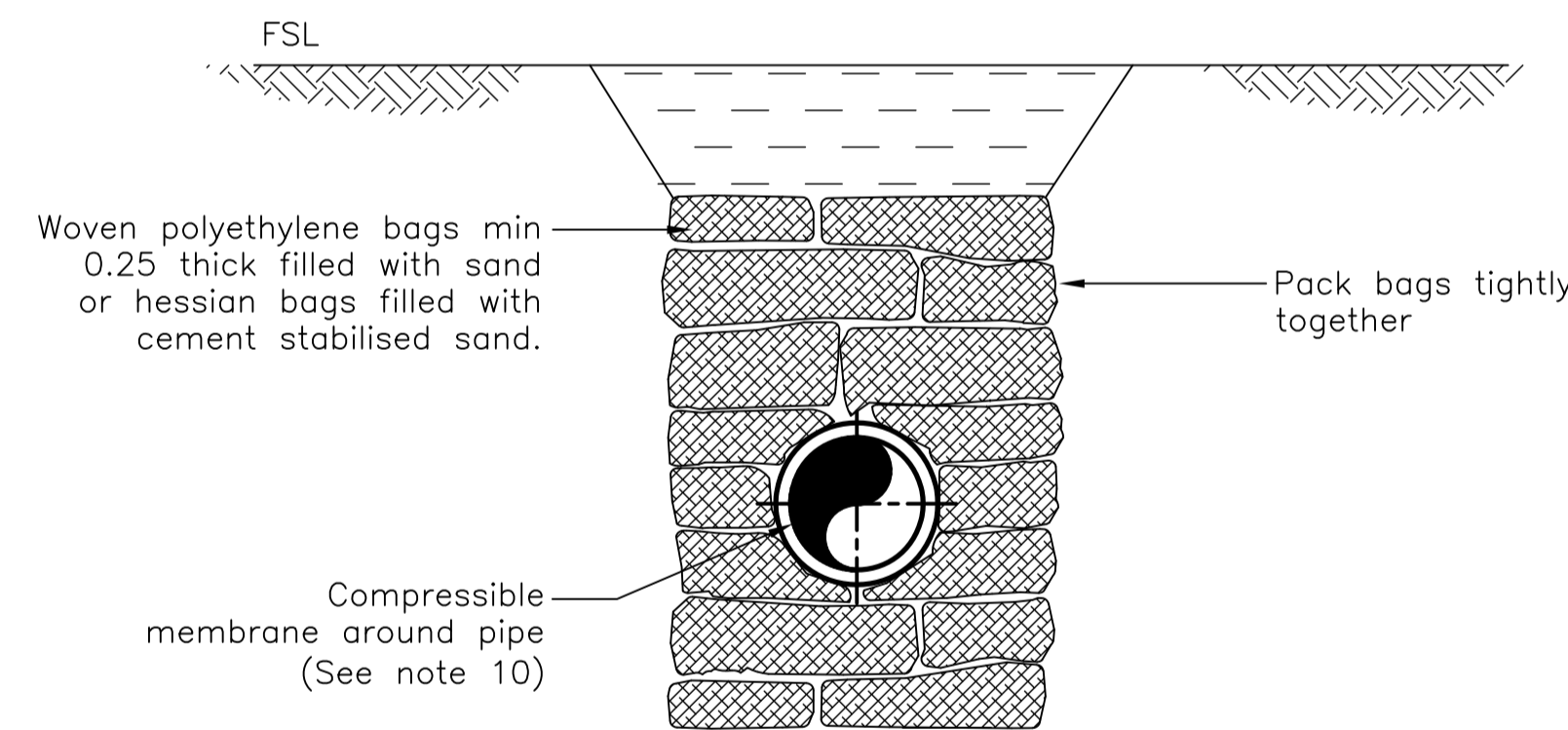
SECTION A



TYPICAL ROAD CROSSING BULKHEAD



TRENCH STOP DETAIL



SECTION B

NOTES

1. All dimensions in millimetres.
2. Construct concrete bulkheads and trench stops at locations specified in design drawings.
3. Construct bulkhead adjacent to kerb and gutter shoulder of sealed roads.
4. Bulkhead at a retaining wall to be under the wall.
5. Key concrete bulkheads into sides and bottom of trench against a bearing surface of undisturbed soil.
6. Concrete to be class N25.
7. Do not deform pipes during placement of concrete.
8. Seal bags to prevent leakage of contained material.
9. Provide a continuous drainage path
 - Through bulkheads and trenchstops
 - Around valve chambers.
 - In trench excavations across roadways.
10. Trench drainage to be in accordance With SD-375. Compressible membrane around pipe to be 10 thick Polystyrene for bulkheads adjacent to kerbs and 3 thick rubber for bulkheads and trenchstops on slopes.
11. For slopes >30% continuously encase the pipe to prevent movement and transfer of ground water. Wrap joints to prevent damage to RRJ.

No.	DATE	DESCRIPTION	AP'D
A		ORIGINAL ISSUE	
REVISIONS			

NOTES : BASED ON FORMER WSAA DRAWING WAT-1209

Full Size A1
Not to Scale

DRAWN: _____ CHECKED: D Moseley
Design Engineer Approved: P Turl
Date: 24-07-2012
Manager Approved: M Harvey
Date: 24-07-2012



**TRENCH DRAINAGE
BULKHEADS & TRENCHSTOP**

**STANDARD
DRAWING
WATER**
SD-374 A