

# MAGNETIC ISLAND: INVESTING IN A SUSTAINABLE FUTURE

Issue 8, May 2026



Welcome to the May issue of the Magnetic Island Project Update, where we share the latest on key projects, approvals and works happening across the Island. Published every other month, this update includes an exciting milestone for Picnic Bay with Council approving the Esplanade redevelopment, along with continued progress on projects such as bridges, boardwalks, coastal management works and essential maintenance through Council's Back to Basics program.

Together, these projects show a continued commitment to improving safety, amenity and long-term resilience for both residents and visitors.

As we share these updates, we'd also like to remind readers that Council is continuing its move toward digital project updates. Going digital helps improve access to information, reduces environmental impacts and allows us to share updates more quickly with the community.

To learn more visit [townsville.qld.gov.au](https://townsville.qld.gov.au) and search 'Projects – Magnetic Island'.



## Henry Lawson Pedestrian Bridge Replacement Reaches Tender Stage

The Henry Lawson Pedestrian Bridge Replacement project has reached an important milestone, with suitably qualified contractors invited to submit proposals to deliver the replacement of the much-used pedestrian bridge, supporting improved safety, accessibility and long-term resilience of the structure for the community.

The tender submission window closed last week on 24 April, and Council will be assessing submissions in the near future.

To learn more visit [townsville.qld.gov.au](https://townsville.qld.gov.au) and search 'Henry Lawson Pedestrian Bridge Replacement'.

## Development to Reshape Picnic Bay



Unanimous Council approval has cleared the way for a new hotel, short-term accommodation and retail development at 1–5 The Esplanade, marking a new chapter for Picnic Bay Esplanade.

The project will redevelop and expand the existing Picnic Bay Hotel and long-vacant adjoining sites, marking the first significant progress on the area in decades and signalling renewed investment and activity for Magnetic Island.

The staged development will begin with refurbishment of the existing bar and restaurant, including a new first-floor restaurant, function room and deck, along with 10 short-term accommodation units.

Once complete, the development will deliver 127 accommodation units, new hospitality and commercial spaces, and supporting facilities. Council has included conditions in the approval to protect local amenity, minimise impacts on neighbours and preserve key features of Picnic Bay's character.

To learn more visit [townsville.qld.gov.au](https://townsville.qld.gov.au) and search 'Development to reshape Picnic Bay'.

## Got Old Batteries? Let's Keep Them Off the Island

Lithium-ion batteries are found in many everyday household devices and can be dangerous if not disposed of properly, posing risks such as fires, injuries and harm to the environment.

These batteries should never go in your household rubbish or recycling bins. While some can be removed and dropped off at B-cycle collection points, many are built into devices and aren't easy to take out, which can make disposal tricky.

To make things easier, Council is working with the North Queensland Regional Organisation of Councils (NQROC) to offer an extended collection program, allowing residents to safely dispose of these items free of charge. The program is led by NQROC's Resource Recovery Working Group, made up of Burdekin, Charters Towers, Hinchinbrook, Palm Island and Townsville councils.

Accepted items can be dropped off for free at the Magnetic Island Transfer Station until 15 November, helping keep the community safe and protect the environment.

To learn more visit [townsville.qld.gov.au](https://townsville.qld.gov.au) and search 'Household Embedded Batteries'.

## Sooning Street Bridge Construction Reaches Major Milestones



Works on the Sooning Street Bridge continue to progress steadily, with pile installation now complete and the project moving into its next major construction phase.

The upcoming milestone involves building the concrete abutments and the central pier headstock, which will support the bridge deck beams. These abutments are constructed on top of and connected to the piles to provide long-term stability.

BMD successfully formed and poured the abutment on the health clinic side prior to Easter, and if conditions remain favourable, construction of the remaining abutment and the central pier headstock is expected to be completed by late April.

Preparation works, including cutting piles to size and installing reinforcing steel connections on the central pier and school-side abutment, commenced during the week of 7 April.

Manufacture of the bridge's 28 deck beams is complete, and deliveries to the Island are underway. Each beam measures approximately 18 metres in length and 800 millimetres in height, which limits the number that can be transported to the Island each day. All beams remain on track for delivery throughout April, subject to barging availability, with deliveries expected to take up to four weeks.

Great news for residents and visitors is that the existing pedestrian walkway will remain open during this phase, with only minor and short-term closures anticipated when heavy lifting recommences on site. In addition, off-site manufacture of the new footbridge has commenced, marking another important step forward in the project.

To **learn more** visit [townsville.qld.gov.au](https://townsville.qld.gov.au) and search '[Gustav Creek Structure Restoration Work](#)'.<sup>1</sup>

## Bolger Bay Water Supply Upgrade Planned

Council is planning a major upgrade to the Bolger Bay pump station, which forms part of the seaward section of the submarine water pipeline supplying Magnetic Island. The pipeline draws water from the same network as Rows Bay and Pallarenda and operating it during peak demand has been linked to water pressure issues in these areas. Inspections have confirmed the pumps have reached end of life, that the balancing tank is nearing replacement, and defects have been identified in the pipework, prompting the need for upgrades and a new storm-surge-resistant chlorination facility.

The works will include replacing pumps, pipework and electrical systems, removing the existing balancing tank, installing a new inlet main, building a chlorine dosing facility, and adding a diesel generator, telemetry and lighting upgrades. A tender has been awarded and construction is anticipated to start in late May 2026 and be completed by the end of May 2027, with updates to be shared as the project progresses.



## Endeavour Creek / Horseshoe Bay Lagoon – Salinity Update

Council is aware of higher salinity levels in the Horseshoe Bay Lagoon and understands the community's interest in how this may affect the area. Tidal exchange influencing the lagoon is occurring upstream of Council-managed infrastructure, on State-managed land overseen by the Queensland Parks and Wildlife Service (QPWS).

Council is continuing to monitor the situation and manage its stormwater and road assets to help limit erosion and reduce sediment entering the lagoon. We will be working closely with QPWS and the Magnetic Island Nature Care Association (MINCA) to support ongoing lagoon monitoring and management efforts.

## Magnetic Island Slope Remediation Works Underway

Work continues on the Magnetic Island Slope Remediation project, with Council awarding the consultancy contract to Jacobs Group (Aus) Pty Ltd. The project is being delivered in two stages. Phase 1 includes a comprehensive risk assessment, options analysis and identification of recommended solutions, supported by concept development and a final report to guide the preferred approach.

Phase 2 will focus on technical investigations and design, including survey, geotechnical testing, detailed design and the preparation of cost estimates.

Survey works have recently been completed, and Council is now progressing with the investigations required to support informed risk analysis and the development of suitable solutions for final design. Further updates will be provided as the project continues to advance.

To **learn more** visit [townsville.qld.gov.au](https://townsville.qld.gov.au) and search '[Magnetic Island Slope Remediation Works](#)'.

## Nelly Bay Road Guardrail Renewal Moves Toward Contract Award

Progress continues on the Nelly Bay Guardrail Renewal project, with the tender process now well advanced. The tender closed on 20 March, and Council has since completed the evaluation of all submissions. Any required tender clarifications have also recently been finalised.

The project is now moving into the final stages of procurement, with the award of the contract anticipated by 24 April. Once awarded, further updates will be provided to keep the community informed as the project moves toward construction.

## Nelly Bay Boardwalk Renewal Reaches Final Procurement Stage

The Nelly Bay Boardwalk Renewal project continues to progress, with key milestones recently achieved. The tender for the project closed on 6 February, and Council has now completed the evaluation of all tender submissions. Tender clarifications and negotiations have also been finalised.

The contract is expected to be awarded by 24 April, and further updates will be shared as the project moves closer to construction and delivery.

## Back to Basics on Magnetic Island



Council is getting back to basics on Magnetic Island, with a renewed focus on fundamental maintenance that keeps the Island safe, clean and looking its best. Core services such as mowing, drain clearing, pothole repairs and waste collection are being prioritised, alongside a proactive approach to fixing issues early, before they become costly problems.

As part of a citywide Back to Basics initiative aimed at improving amenity and appearance, several key projects have recently been completed on Magnetic Island. These include the rejuvenation of the Granite Street roundabout at Picnic Bay, high-pressure water-jet cleaning of the Horseshoe Bay, Nelly Bay and Picnic Bay boat ramps, and the continuation of DRFA pothole and edge-break repairs across Island roads.

Together, these works are helping to lift presentation, improve safety and restore pride in local public spaces, reinforcing Council's commitment to maintaining Magnetic Island for residents and visitors alike.



## Fresh New Look for Horseshoe Bay Community Centre

Residents and visitors may notice a refreshed look at the Horseshoe Bay Community Centre, with Council completing new signage as part of routine maintenance. Updated branding improves visibility, use of space and recognition, presenting the centre as a modern hub. A new QR code links to bookings and centre information, while Emergency Management and Disaster Dashboard details highlight where to find trusted updates during severe weather. These improvements enhance communication, access and preparedness. To **learn more** visit [townsville.bookable.net.au](https://townsville.bookable.net.au) and search 'Horseshoe Bay Community Centre'.

## Planned DRFA Works for West Point Road

Disaster Recovery Funding Arrangement (DRFA) works are planned for West Point Road to address damage caused by recent wet weather events. These upcoming unsealed road works will focus on the restoration, repair, and reconstruction of impacted gravel and earth-surfaced sections, with the aim of returning the road to its pre-wet season condition and ensuring it remains safe and functional for all road users.

The proposed scope of works includes grading to reinstate the road surface shape, clearing debris, refilling scour damage using local material, and restoring culverts where required. These activities are designed to improve drainage, reduce the risk of future damage, and maintain reliable access along West Point Road. Council thanks the community for its patience and cooperation ahead of these important recovery works and will provide further updates as planning progresses.

## Peterson Creek Regeneration Continues

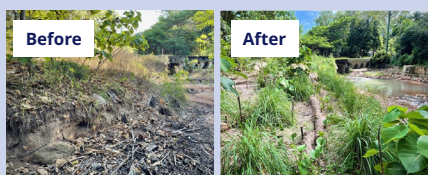
Council has continued creek regeneration works along Peterson Creek using grant funding, with a focus on stabilising creek banks and supporting nearby infrastructure. These works have been well received by local community groups and neighbouring property owners, recognising the benefits of improving creek health while protecting surrounding assets and enhancing the local environment.

Stage 2 regeneration works are scheduled to take place between May and June and will build on the success of the earlier works. This next stage will also include an opportunity for community

volunteers to get involved, assisting with ongoing maintenance and care of the area. <sup>2</sup>

If you're interested in caring for Magnetic Island's natural environment, Arcadia Coastcare welcomes volunteers of all experience levels. Get involved locally by emailing [arcadiacoastcare@gmail.com](mailto:arcadiacoastcare@gmail.com) or visiting [arcadiacoastcare.com.au](https://arcadiacoastcare.com.au).

Council thanks the volunteers for their community work.



## Nelly Bay Harbour Dredging and Sea Placement Update

In 2025, Council postponed maintenance dredging in Nelly Bay Harbour to focus on urgent road and bridge repairs following the damaging wet season. Since then, Council has been exploring sea placement as a potential alternative option for managing dredged material. Community feedback on this possible approach was invited through the Have Your Say survey in December 2025, and this feedback helped inform Council's next steps.

Following the survey, Council applied to the Department of Climate Change, Energy, the Environment and Water for a multi-year (10-year) sea placement permit to support ongoing maintenance dredging in Nelly Bay Harbour.

The Department has now issued Council with a Request for Information (RFI) in relation to this application, which is currently being reviewed. Council will respond to the request and continue to keep the community informed as the application progresses.

In the meantime, Council's Kelly Street site in Nelly Bay remains the approved option for dredged material, with all required permits and approvals already in place.

To **learn more** visit [townsville.qld.gov.au](https://townsville.qld.gov.au) and search 'Maintenance Dredging at Nelly Bay Harbour'.

## Nelly Bay Foreshore Coastal Management Works Underway

Council has commenced coastal management works along the Nelly Bay foreshore to help protect natural environment and public assets following recent weather events.

The works focus on reshaping and stabilising erosion-prone sections of the foreshore, along with enhanced maintenance of beach access paths to improve safety and usability for the community.

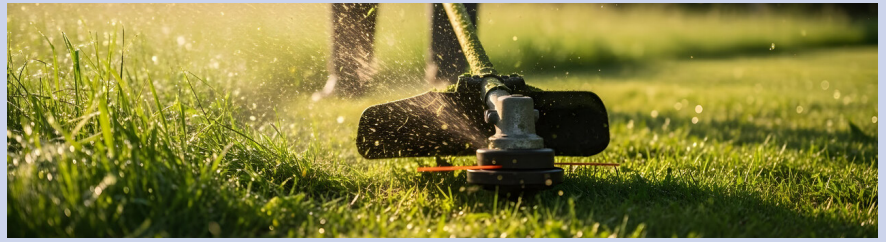
Sand is being placed in vulnerable areas to improve stability and safeguard nearby infrastructure, with Council staff overseeing the works to manage environmental impacts. The project commenced on 20 April, and is expected to take around two weeks, subject to weather and tidal conditions.

During this time, the community may experience partial beach closures, construction activity, and temporary increases in noise, dust and vibration. Council thanks residents and visitors for their patience while these important works are carried out.

To learn more visit [townsville.qld.gov.au](https://townsville.qld.gov.au) and search 'Nelly Bay Foreshore Coastal Management Works'.



## Keeping Magnetic Island Tidy, Safe and Welcoming



Following recent weather events and periods of sustained rainfall, vegetation growth across Magnetic Island has accelerated, and Council has noticed an increase in overgrown properties. We kindly remind owners of vacation homes and vacant land (particularly those who do not reside on the Island) to contact their contractors to ensure lawns and properties are well maintained.

With bushfire season in North Queensland normally commencing in July and progressing south as spring approaches, managing vegetation is especially important. These timeframes can vary from year to year depending on fuel loads, long-term climate patterns, and short-term weather conditions.

Keeping properties clear of excess vegetation helps reduce fire risk, protect neighbouring homes, and improve overall safety.

Maintaining properties also helps minimise pests and other hazards while preserving the Island's natural appeal for residents and visitors alike.

We also extend a big thank you to the community for continuing to keep dogs on leads in public areas and for being responsible pet owners. Your efforts help create a safe, welcoming, and family-friendly environment for everyone.

To learn more visit [townsville.qld.gov.au](https://townsville.qld.gov.au) and search '[Overgrown and Unightly Properties](#)'.

## Magnetic Island Recycled Water Irrigation Upgrade Set to Begin

Good news for Magnetic Island! Council has awarded the contract for the Recycled Water Irrigation System Upgrade to a local contractor. Works are set to get underway from 27 April and are expected to be completed by November, depending on weather, material availability and site conditions.

The upgrade will take place at the Magnetic Island Wastewater Recycling Facility on West Point Road, as well as the Magnetic Island Country Club, Magnetic Island Transfer Station and Picnic Bay Landfill.

The project includes building a new 1ML recycled water storage tank,

upgrading monitoring and control systems, and refurbishing existing irrigation infrastructure at each location. Council will continue to keep the community updated as works progress.

To learn more visit [townsville.qld.gov.au](https://townsville.qld.gov.au) and search 'Magnetic Island Recycled Water Irrigation Upgrade'.



## CONTACT US

### City Projects

103 Walker Street, Townsville City  
PO Box 1268, Townsville QLD 4810  
13 48 10  
[cityprojects@townsville.qld.gov.au](mailto:cityprojects@townsville.qld.gov.au)  
[townsville.qld.gov.au](https://townsville.qld.gov.au)

### READ MORE

SCAN CODE OR VISIT  
[TOWNSVILLE.QLD.GOV.AU](https://townsville.qld.gov.au)  
MAGNETIC ISLAND PROJECTS

### SIGN UP TO E-NEWS

SUBSCRIBE TO E-NEWS TO  
STAY UP-TO-DATE WITH  
MAGNETIC ISLAND PROJECTS



Townsville City Council advises that all content is correct at time of printing.  
All information is subject to change without notice. Townsville City Council © 2026.

<sup>1</sup> This project is financed through the jointly funded Commonwealth-state Disaster Recovery Funding Arrangements (DRFA).  
<sup>2</sup> This project is delivered via funding from the Australian Government's Reef Trust to support the Reef's long-term resilience and the implementation of the Reef 2050 Long-Term Sustainability Plan.



Australian Government