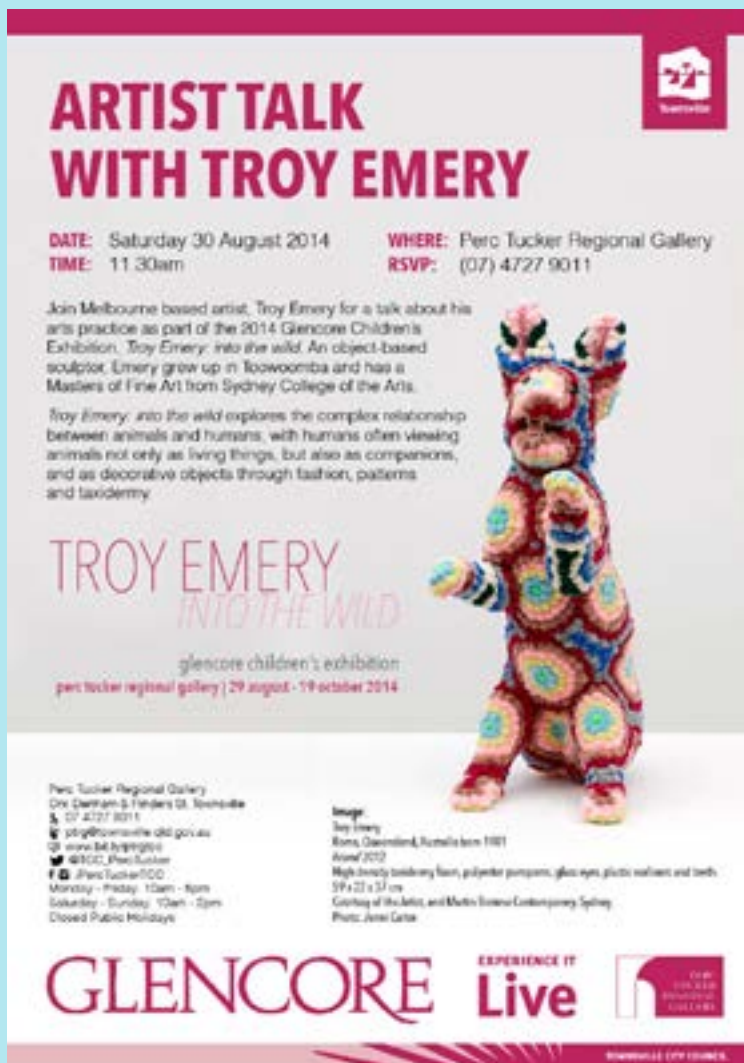


# 2014 Exhibitions

## Perc Tucker Regional Gallery



**ARTIST TALK WITH TROY EMERY**

**DATE:** Saturday 30 August 2014  
**TIME:** 11:30am

**WHERE:** Perc Tucker Regional Gallery  
**RSVP:** (07) 4727 9011

Join Melbourne based artist, Troy Emery for a talk about his arts practice as part of the 2014 Glencore Children's Exhibition, *Troy Emery: into the wild*. An object-based sculptor, Emery grew up in Toowoomba and has a Masters of Fine Art from Sydney College of the Arts.

*Troy Emery: into the wild* explores the complex relationship between animals and humans, with humans often viewing animals not only as living things, but also as companions, and as decorative objects through fashion, patterns and taxonomy.

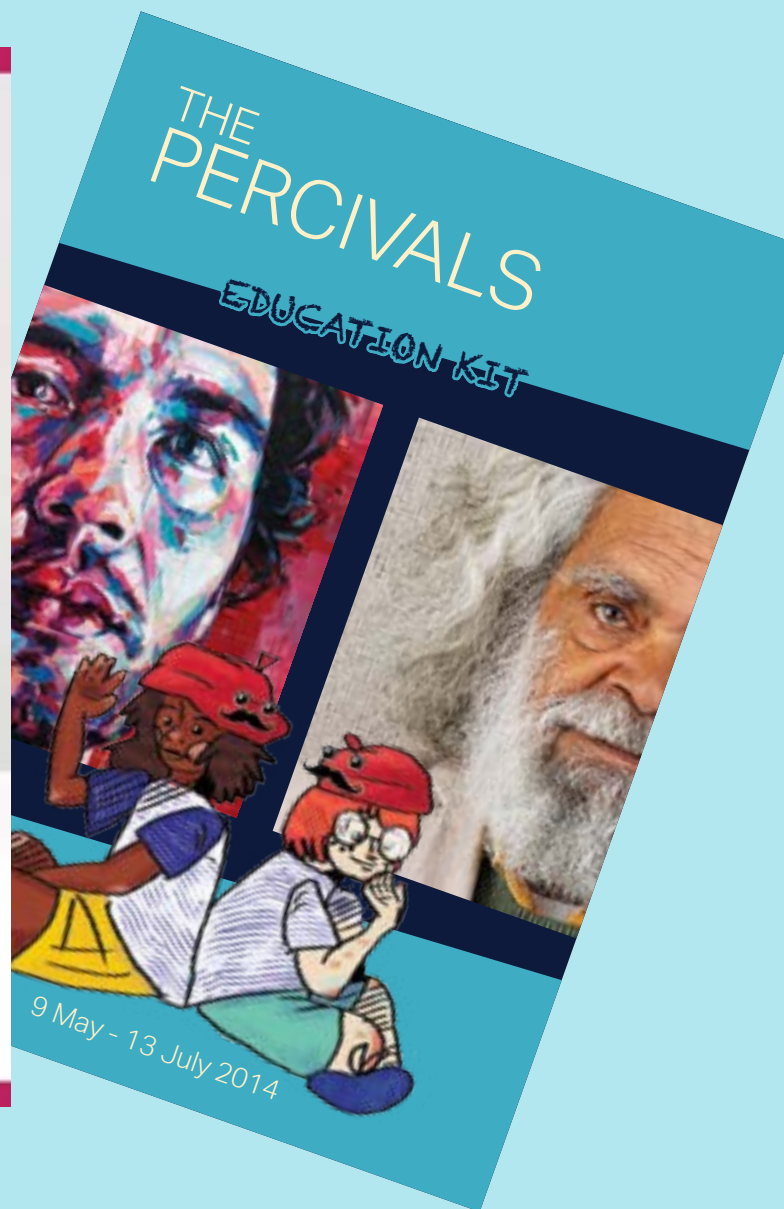
**TROY EMERY**  
*INTO THE WILD*  
glencore children's exhibition  
perc tucker regional gallery | 29 august - 19 october 2014

Perc Tucker Regional Gallery  
Cnr Denham & Flinders St, Townsville  
QLD 4810  
Tel: (07) 4727 9011  
Email: ptrg@townsville.qld.gov.au  
Web: www.bit.ly/ptrgtcc  
Facebook: @PercTuckerTCC  
Instagram: PercTuckerTCC

Images:  
Troy Emery  
Rams, Glencore, Rumbia born 1981  
Award 2012  
High density embroidery, foam, polyester pumpkins, glass eyes, plastic walrus and teeth  
59 x 23 x 33 cm  
Courtesy of the artist, and Martin Bonner Contemporary Sydney  
Photo: Janet Carter

**GLENCORE** **EXPERIENCE IT Live**

Townsville City Council



**THE PERCIVALS**  
**EDUCATION KIT**

9 May - 13 July 2014

Perc Tucker Regional Gallery  
Cnr. Denham & Flinders St  
Townsville QLD 4810

**Opening Hours**  
Monday - Friday: 10am - 5pm  
Saturday - Sunday: 10am - 2pm

(07) 4727 9011  
ptrg@townsville.qld.gov.au  
www.bit.ly/ptrgtcc

@TCC\_Perc Tucker  
PercTuckerTCC

**EXPERIENCE IT**  
**Live**



Brick by Brick is the largest ever exhibition of LEGO® history and products in Townsville



# Brick by Brick



©2013 The LEGO Group. All rights reserved.

Perc Tucker Regional Gallery  
13 December 2013 - 23 February 2014



©2013 The LEGO Group. All rights reserved.

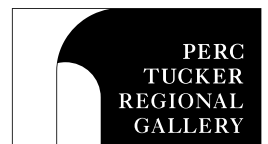
©2013 The LEGO Group. All rights reserved.

©2013 The LEGO Group. All rights reserved.

LEGO, the LEGO logo, the Minifigure and DUPLO are trademarks of the LEGO Group. ©2013 The LEGO Group. All rights reserved. Historical information and materials provided by the LEGO Group.



**Willows**  
Shopping Centre



TOWNSVILLE CITY COUNCIL

ULI LIESSMANN

# life

u n f r a m e d

Perc Tucker Regional Gallery exhibition dates:  
20 December 2013 – 26 January 2014

EXPERIENCE IT  
**Live**



Perc Tucker Regional Gallery  
Cnr. Denham & Flinders St  
Townsville QLD 4810

(07) 4727 9011  
ptrg@townsville.qld.gov.au  
www.bit.ly/ptrgtcc

Opening Hours  
Monday - Friday: 10am - 5pm  
Saturday - Sunday: 10am - 2pm

@TCC\_Perc Tucker  
PercTuckerTCC

Image: Uli Liessmann  
**Bridge Builders** 2008  
watercolour on paper, 65 x 85 cm



# Tim Maguire

---

THE DOUGLAS KAGI GIFT

---

**Exhibition Dates:** 28 February - 27 April 2014



GROUND FLOOR 

**Image:** Tim MAGUIRE, United Kingdom b. 1958, *Love of the Plants II* [detail] 2007, Digital pigment print on paper, 72.3 x 91.61 cm (sheet); 60 x 80 cm (image), ed. 11/35. Acc. 2012.033. Donated through the Australian Government's Cultural Gifts Program by Tech-Dry Building Protection Systems Pty Ltd as trustee for the Dr Douglas A Kagi Scientific Research Trust, City of Townsville Art Collection. Photograph: Holly Grech-Fitzgerald

*Tim Maguire: The Douglas Kagi Gift* will feature as part of the 2014 Queensland Festival of Photography 5.

[www.festivalofphotography.com.au](http://www.festivalofphotography.com.au)






Queensland  
Festival of  
Photography

EXPERIENCE IT

**Live**



Perc Tucker Regional Gallery  
Cnr. Denham & Flinders St  
Townsville QLD 4810

 (07) 4727 9011  
 [ptrg@townsville.qld.gov.au](mailto:ptrg@townsville.qld.gov.au)  
 [www.bit.ly/ptrgtcc](http://www.bit.ly/ptrgtcc)

Opening Hours  
Monday - Friday: 10am - 5pm  
Saturday - Sunday: 10am - 2pm

 @TCC\_Perc Tucker  
 PercTuckerTCC



# RENEGADES

OUTSIDER ART



Townsville City Council and the Manager Gallery Services invite you to the launch of

## RENEGADES

OUTSIDER ART

A KickArts Contemporary Arts Touring Exhibition

To be officially opened by  
**Ingrid Hoffmann**  
 Director KickArts Contemporary Arts  
**7pm Friday 14 February 2014**

Followed by a floor talk by Ingrid Hoffmann

**7.30pm Friday 14 February 2014**

RSVP | (07) 4727 9011

**Exhibition Dates** | 31 January - 9 March 2014

Perc Tucker Regional Gallery

**Image right:**  
 Alan Constable *Not titled (ballet dancer)* 2007  
 [detail], gouache on paper  
 50 x 65cm  
 Courtesy Arts Project Australia

**Images over:**  
 Paul Freeman *Mini-collection* 1986-1991  
 mixed media  
 dimensions variable  
 Courtesy the artist

Sarah Van Hooren *Pisupi* 2012  
 wood-fired ceramic, natural fibre and shells  
 40 x 28cm  
 Courtesy of Erub Erwer Meta Art Centre



EXPERIENCE IT  
**Live**



**KICK  
 CONTEMPORARY  
 ARTS**



Perc Tucker Regional Gallery  
 Cnr. Denham & Flinders St  
 Townsville QLD 4810  
 (07) 4727 9011  
 ptrg@townsville.qld.gov.au  
[www.bit.ly/ptrgtcc](http://www.bit.ly/ptrgtcc)

f @TCC\_Perc Tucker  
 PercTuckerTCC  
 Opening Hours  
 Monday - Friday  
 10am - 5pm  
 Saturday - Sunday  
 10am - 2pm

# THE PERCIVALS



## GLENCORE PERCIVAL PORTRAIT PAINTING PRIZE

9 May - 13 July 2014

Major Sponsor Painting Prize  
**GLENCORE**

Major Sponsor Photographic Prize  
**DUO**

Publication Sponsor  
**COX** RAYNER  
ARCHITECTS

People's Choice Award Sponsor  
**T** TELSTRA STORES  
TOWNSVILLE

**PERC**  
TUCKER  
REGIONAL  
GALLERY

**PINNACLES**  
gallery

**T**  
Townsville



# Perc Tucker Regional Gallery

Exhibition Dates | 14 March - 27 April 2014

## the line of **Fire**



Perc Tucker Regional Gallery  
Cnr. Denham & Flinders St  
Townsville QLD 4810

(07) 4727 9011

[ptrg@townsville.qld.gov.au](mailto:ptrg@townsville.qld.gov.au)

[www.bit.ly/ptrgtcc](http://www.bit.ly/ptrgtcc)

Opening Hours  
Monday - Friday: 10am - 5pm  
Saturday - Sunday: 10am - 2pm

[@TCC\\_PercTucker](https://twitter.com/TCC_PercTucker)  
[PercTuckerTCC](https://www.facebook.com/PercTuckerTCC)

### Image:

**Michael COLERIDGE** Slovenia, Austria b. 1933 d. 2012

**Members of 5 Platoon, B Company, 7RAR waiting to board an Iroquois helicopter to return to Nui Dat**

26 August 1967, Printed 2006

Digital print

76 x 91.5 cm (composition); 112 x 112 cm (sheet)

Acc.2009.024

Courtesy of the Australian War Memorial 2009

City of Townsville Art Collection

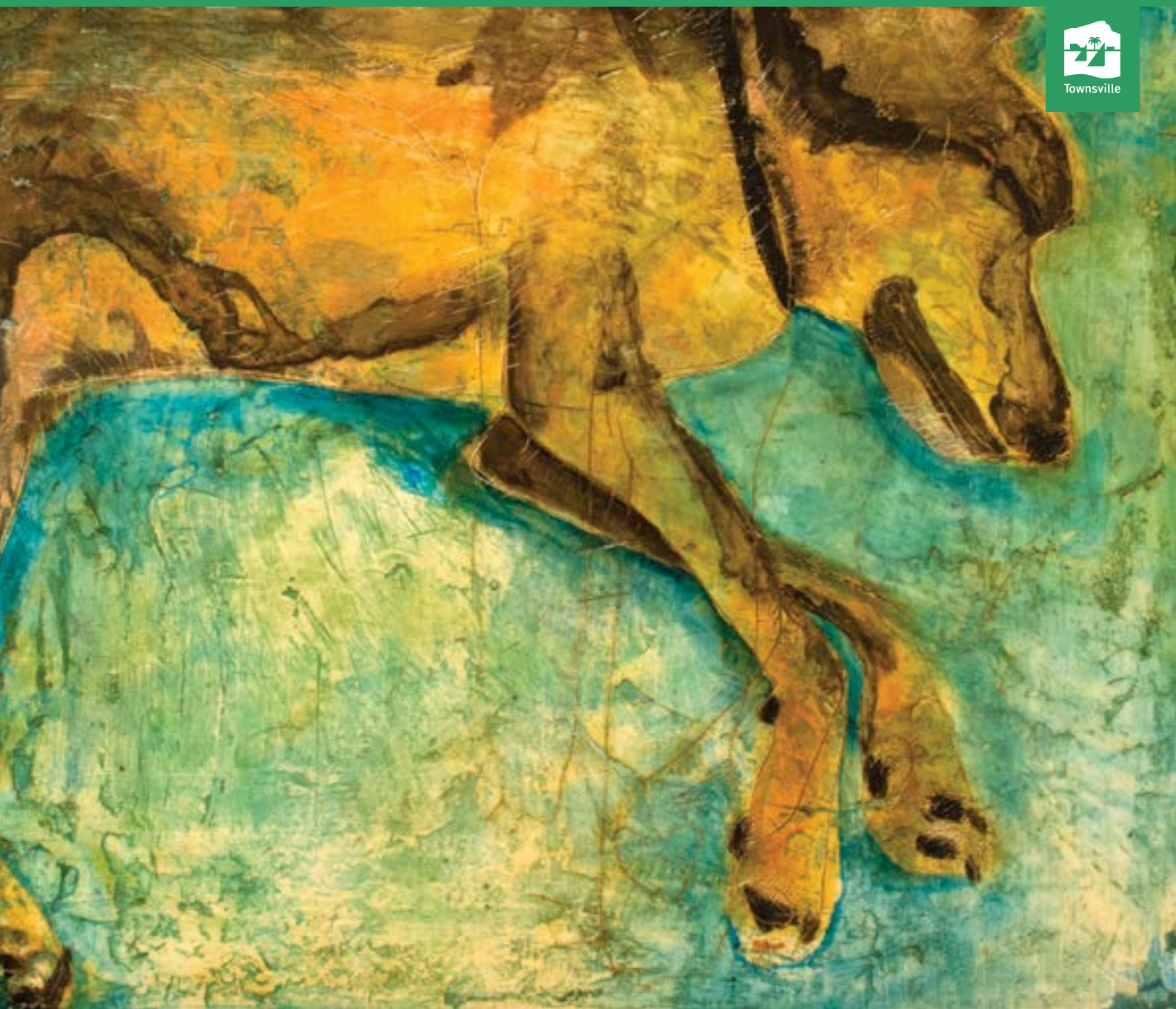
EXPERIENCE IT

# Live



FIRST FLOOR





Glencore, Billabong Sanctuary and Perc Tucker Regional Gallery invite you to the launch of

## ANIMAL PORTRAITS

**Animal Portraits** is a fun exhibition that coincides with the **Glencore Percival Portrait Painting Prize** and shines the spotlight on our scaly, feathered and furry friends. The biennial exhibition offers a \$1000 prize for the winning entry, but more importantly it illustrates the affection with which we view our pets and wildlife.

To be officially opened by  
**Avril Plath**  
Community Relations Officer  
Glencore  
**11am Saturday 31 May 2014**

**Perc Tucker Regional Gallery**  
RSVP: (07) 4727 9011  
**EXHIBITION DATES: 9 MAY - 13 JULY 2014**

Major Prize to be judged by  
**Ranger Jeremy Hurburgh**  
Billabong Sanctuary

Followed by a morning tea where you can  
meet some of our native animals

**Image over:**

Jan Ward *He Twitches in His Sleep* [detail]

**Image right:**

Sylvia Ditchburn *Icon of NQ Tropical Rainforests* [detail]



EXPERIENCE IT  
**Live**



**GLENCORE**



**Perc Tucker Regional Gallery**  
Cnr. Denham & Flinders St  
Townsville QLD 4810  
(07) 4727 9011  
ptrg@townsville.qld.gov.au  
www.bit.ly/ptrgtcc

f @TCC\_Perc Tucker  
PercTuckerTCC  
Opening Hours  
Monday - Friday  
10am - 5pm  
Saturday - Sunday  
10am - 2pm



# CORNERSTONE

Jo Lankester

Perc Tucker Regional Gallery  
18 July - 24 August 2014

Perc Tucker Regional Gallery  
Cnr. Denham & Flinders St  
Townsville QLD 4810

(07) 4727 9011  
ptrg@townsville.qld.gov.au  
[www.bit.ly/ptrgtcc](http://www.bit.ly/ptrgtcc)

Opening Hours  
Monday - Friday: 10am - 5pm  
Saturday - Sunday: 10am - 2pm

@TCC\_Perc Tucker  
PercTuckerTCC

Image: Jo Lankester *Ghosts of the Boulder Past III* [detail] 2014,  
10 colour plate collagraph, 75 x  
100.5 cm, Unique State

EXPERIENCE IT  
**Live**



# Illumina

the threshold of experience



## Perc Tucker Regional Gallery 18 July - 14 September 2014

Perc Tucker Regional Gallery  
Cnr. Denham & Flinders St  
Townsville QLD 4810

Opening Hours  
Monday - Friday: 10am - 5pm  
Saturday - Sunday: 10am - 2pm

(07) 4727 9011  
ptrg@townsville.qld.gov.au  
www.bit.ly/ptrgtcc

@TCC\_Perc Tucker  
PercTuckerTCC

**Image above:**  
Donna Foley  
*Glorious Mysteries: indulgences [detail]* 2014  
digital image on canvas with rosary on Perspex  
80 x 80 cm

**Image right:**  
Donna Foley  
*Astro Boy at the intersection of 2000 years of culture* 2014  
digital image on canvas  
120 x 180 cm



EXPERIENCE IT  
**Live**







# TROY EMERY

## *INTO THE WILD*

glencore children's exhibition  
perc tucker regional gallery | 29 august - 19 october 2014

Cover image :  
Troy Emery *Saint Euphemia* 2013  
Acrylic yarn, polyurethane mannequin, pins, hot glue  
and painted timber base, 130 x 50 x 64 cm  
Courtesy, Gould Galleries. Photo: John Brash

# GLENCORE

EXPERIENCE IT  
**Live**







Townsville



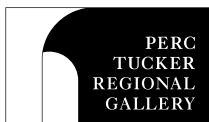
Image: Vincent Bray *Mine Side Town Side 2013* [detail], relief print, 91 x 73 cm, Winner of the 2013 Townsville Open Award

# 59th Townsville Art Awards and the 2014 Townsville Open Art Award

Exhibition Dates: 19 September - 5 October 2014

Perc Tucker Regional Gallery

EXPERIENCE IT  
**Live**



FIRST FLOOR

Perc Tucker Regional Gallery  
Cnr. Denham & Flinders St  
Townsville QLD 4810

Opening Hours  
Monday - Friday: 10am - 5pm  
Saturday - Sunday: 10am - 2pm

(07) 4727 9011  
ptrg@townsville.qld.gov.au  
[www.bit.ly/ptrgtcc](http://www.bit.ly/ptrgtcc)  
@TCC\_PercTucker  
PercTuckerTCC



GLENCORE



TOWNSVILLE CITY COUNCIL





# NUMINOUS

## JCU NEW MEDIA ARTS 2014 GRADUATE EXHIBITION

31 OCT - 9 NOV



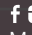
Perc Tucker Regional Gallery

Cnr. Denham and Flinders Streets, Townsville QLD 4810

Numinous is the 2014 Bachelor of New Media Arts graduate exhibition featuring analogue and digital works. This exhibition explores art's connection with the sublime and reflects upon the graduates' experiences through ideologies of journey, place, and self.

 Like us at [facebook.com/Numinous2014](https://facebook.com/Numinous2014)

Perc Tucker Regional Gallery  
Cnr. Denham & Flinders St  
Townsville QLD 4810  
(07) 4727 9011  
[ptrg@townsville.qld.gov.au](mailto:ptrg@townsville.qld.gov.au)

 [www.bit.ly/ptrgtcc](http://www.bit.ly/ptrgtcc)  
 @TCC\_PercTucker  
 PercTuckerTCC  
Monday - Friday: 10am - 5pm  
Saturday - Sunday: 10am - 2pm

EXPERIENCE IT  
**Live**



# ??? s - - > > ! ! ! ! :

**Visual Art Students present Creative Dialogues**  
Diverse media, multi cultures, disparate contexts



**14 November - 30 November 2014**  
**Perc Tucker Regional Gallery**

Image: Tori Skilton *Pocket Change: Not your DRI\** [detail] 2014, 59 x 42 cm, Gouache on paper

Perc Tucker Regional Gallery  
Cnr. Denham & Flinders St  
Townsville QLD 4810  
(07) 4727 9011  
ptrg@townsville.qld.gov.au

[www.bit.ly/ptrgtcc](http://www.bit.ly/ptrgtcc)  
@TCC\_PercTucker  
PercTuckerTCC  
Monday - Friday: 10am - 5pm  
Saturday - Sunday: 10am - 2pm



EXPERIENCE IT  
**Live**







*Sue Smith*

---

*of* <sup>THIRTY-SIX</sup>CASTLE <sup>VIEWS</sup>HILL

PERC TUCKER REGIONAL GALLERY  
19 DECEMBER 2014 - 15 FEBRUARY 2015

# Community Access Spaces







# #TownsvilleShines

An exhibition of #TownsvilleShines images streamed from Instagram



28 February - 26 March 2014

PERC TUCKER REGIONAL GALLERY

TOWNSVILLE CITY COUNCIL

Townsville City Council and the Manager Gallery  
Services present

Exhibition Dates | 28 February - 26 March 2014

Perc Tucker Regional Gallery | Niche Gallery

**#TownsvilleShines** is an exhibition of some truly fantastic public images sourced from over 3,000 photos appearing on Instagram. The images have all used the hashtag **#TownsvilleShines** and capture the well-known spaces, much-loved events, and hidden treasures our region has to offer.

The TownsvilleShines campaign began in 2012 with the Sucrogen V8 Supercars Campaign, when volunteers took to the streets over ten days to generate conversation about Townsville and put our region in the spotlight. The campaign generated conversation nationally and involved locals, visitors, V8 drivers and even the Prime Minister at the time, Julia Gillard.

Since then, TownsvilleShines has gone from strength to strength, involving thousands of users. This exhibition displays just some of the photographs taken by those users, and illustrates why TownsvilleShines all year round.



EXPERIENCE IT  
**Live**



**Perc Tucker Regional Gallery**  
Cnr. Denham & Flinders St  
Townsville QLD 4810  
Opening Hours  
Monday - Friday: 10am - 5pm  
Saturday - Sunday: 10am - 2pm

(07) 4727 9011  
ptrg@townsville.qld.gov.au  
www.bit.ly/ptrgtcc  
@TCC\_PercTucker  
PercTuckerTCC



TOWNSVILLE CITY COUNCIL

Townsville City Council and the Manager Gallery Services invite you to the launch of

Image over:  
Steve Price *Don't look George, there's some human with a big beak like yours with a camera* 2013

# The Nose that Froze

Images from Pricey's  
Antarctic Expedition

Image below:  
Steve Price *Ice aglow* 2013

A collection of stunning photographs from local radio personality 'Pricey' following his recent trip to Antarctica. All photos will be available for sale, with proceeds going directly to charity.

**Official opening:**  
10.30am Sunday 16 March 2014

**EXHIBITION DATES: 28 February - 26 March 2014**  
**SHOWING IN THE ACCESS SPACE, PERC TUCKER REGIONAL GALLERY**

EXPERIENCE IT  
**Live**



ACCESS SPACE



Perc Tucker Regional Gallery  
Cnr. Denham & Flinders St  
Townsville QLD 4810  
(07) 4727 9011  
ptrg@townsville.qld.gov.au  
www.bit.ly/ptrgtcc

@TCC\_Perc Tucker  
PercTuckerTCC  
Opening Hours  
Monday - Friday  
10am - 5pm  
Saturday - Sunday  
10am - 2pm





TOWNSVILLE CITY COUNCIL

Townsville City Council and the Manager Gallery Services invite you to the launch of

# Tasmanian Dream

by Farvardin Daliri

The series of work in this exhibition focusses on a recent trip back to Tasmania, where the artist concentrated on seascapes from the East Coast, as well as iconic views of the Cradle Mountain lakes and forest region. Farvardin Daliri often sketches and takes photographs around this region, full of memories of his first port of entry into a new life here in Australia.

**Official opening:**

11am Sunday 6 April

**EXHIBITION DATES: 28 March - 27 April 2014**

**SHOWING IN THE NICHE SPACE, PERC TUCKER REGIONAL GALLERY**

EXPERIENCE IT

Live



NICHE SPACE

**Image over:**

Farvardin Daliri *Swan Sea* [detail]

**Image above:**

Farvardin Daliri *It is what it is* [detail]

Perc Tucker Regional Gallery  
Cnr. Denham & Flinders St  
Townsville QLD 4810

(07) 4727 9011

[ptrg@townsville.qld.gov.au](mailto:ptrg@townsville.qld.gov.au)

[www.bit.ly/ptrgtcc](http://www.bit.ly/ptrgtcc)

@TCC\_Perc Tucker

PercTuckerTCC

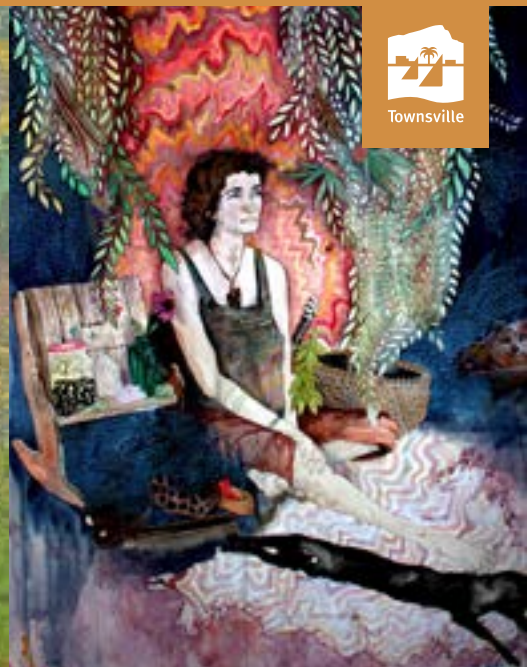
Opening Hours

Monday - Friday

10am - 5pm

Saturday - Sunday

10am - 2pm



TOWNSVILLE CITY COUNCIL

Townsville City Council and the Manager Gallery Services invite you to the launch of

# celebrating diversity

An exhibition by Jennifer Harkness

Jennifer Harkness's artworks are a celebration of diversity and reflect upon this notion in a truly unique way.

At this moment in time globalisation is reducing not only biological diversity, but the integrity of cultural diversity as well. Human societies are slowly losing touch with nature, causing harm to our eco system and harm to our souls.

To be officially opened by: TBC  
Date TBC

**EXHIBITION DATES: 28 MARCH – 27 APRIL 2014**  
**SHOWING IN THE ACCESS SPACE, PERC TUCKER REGIONAL GALLERY**

**Image right:**  
Jen Harkness  
*Mirkalijn* 2013  
Mixed media on paper  
80 x 57 cm

**Images over:**  
Jen Harkness  
*Tibetan girl* 2013  
Mixed media on paper  
76 X 73 cm

Jen Harkness  
*Wave* 2013  
Mixed media on paper  
80 x 60 cm



EXPERIENCE IT  
**Live**



ACCESS SPACE

Perc Tucker Regional Gallery  
Cnr. Denham & Flinders St  
Townsville QLD 4810  
(07) 4727 9011  
ptrg@townsville.qld.gov.au  
www.bit.ly/ptrgtcc

f @TCC\_Perc Tucker  
PercTuckerTCC  
Opening Hours  
Monday - Friday  
10am - 5pm  
Saturday - Sunday  
10am - 2pm





TOWNSVILLE CITY COUNCIL

Townsville City Council and Perc Tucker Regional Gallery invite you to the launch of

## Dexterity: PressNorth Printmakers

An exhibition showcasing selected works by workshop participants and visiting Artists in Residence from a series of professional development projects engaging four master printmakers, G.W. Bot, Peter Lancaster, Trent Walter and Judy Watson.

PressNorth Printmakers is a not-for-profit artist-run-initiative composed of emerging, mid-career and professional printmakers from Townsville and the surrounding regions. PressNorth Printmakers promotes innovative printmaking, fostering excellence, inspiration and transferable skills engaging with local, national and international communities.

Exhibition opening: **12pm Saturday 26 July 2014**

Followed by: *Cornerstone*, an Artist Talk by Jo Lankester  
**12.30pm Saturday 26 July 2014**

*Limina*, an Artist Talk by Dr Donna Foley  
**1pm Saturday 26 July 2014**

**EXHIBITION DATES: 18 JULY - 24 AUGUST 2014**

**SHOWING IN THE NICHE SPACE, PERC TUCKER REGIONAL GALLERY**

**Image over:**

Alan Junior *Heian Temple Garden* 2013

**Image right:**

Laura Castell *No War* 2013,



The project was made possible by the Australian Government's Regional Arts Fund, which supports sustainable cultural development in regional, rural, and remote Australia to give artists and communities' better access to opportunities to practice and experience the arts. The program is delivered in partnership with Artslink Queensland, PressNorth Printmakers, Umbrella Studio of contemporary arts & Perc Tucker Regional Gallery.

EXPERIENCE IT  
**Live**



**Perc Tucker Regional Gallery**  
Cnr. Denham & Flinders St  
Townsville QLD 4810  
(07) 4727 9011  
ptrg@townsville.qld.gov.au  
[www.bit.ly/ptrgtcc](http://www.bit.ly/ptrgtcc)

**@TCC\_Perc Tucker**  
**PercTuckerTCC**  
Opening Hours  
Monday - Friday  
10am - 5pm  
Saturday - Sunday  
10am - 2pm



TOWNSVILLE CITY COUNCIL

Townsville City Council and the Manager Gallery Services invite you to the launch of

# This Sporting Lens

An exhibition by Ian Hitchcock

This exhibition is the culmination of a ten-year career as a professional sports photographer for Getty Images, an international photo agency. As a Townsville based artist, Ian's passion for photography and his sensitivity to his subject matter is clearly portrayed in this exciting sports photography exhibition.

**To be officially opened by**

Cameron Laird

Walkley Award winning photographer

**11am Saturday 19 July 2014**

**EXHIBITION DATES: 18 JULY – 24 AUGUST 2014**

**SHOWING IN THE ACCESS SPACE, PERC TUCKER REGIONAL GALLERY**

**Image right:**

Ian Hitchcock

*Untitled [detail] 2014*

Digital photo print

41 x 51 cm

**Image over:**

Ian Hitchcock

*Untitled [detail] 2014*

Digital photo print

41 x 51 cm



EXPERIENCE IT

**Live**



**ACCESS SPACE**

**Perc Tucker Regional Gallery**  
Cnr. Denham & Flinders St  
Townsville QLD 4810  
(07) 4727 9011  
ptrg@townsville.qld.gov.au  
www.bit.ly/ptrgtcc

f @TCC\_Perc Tucker

PercTuckerTCC

Opening Hours

Monday - Friday

10am - 5pm

Saturday - Sunday

10am - 2pm





TOWNSVILLE CITY COUNCIL

Townsville City Council and the Manager Gallery Services invite you to

# RIGHT OF ABODE

An existentialist observation of Western habitation, custom and inherent sense of space by local photographer Mitch Lynn.

The images are reflections of our interactions with the environments and places in which we live, work and play. Exploring a geospatial narrative, the stories are tentative to location and surroundings instead of time.

Official opening

**11am, Saturday 6 December 2014**

RSVP: (07) 4727 9011

**Exhibition Dates:** 5 December 2014 - 25 January 2015

Perc Tucker Regional Gallery

**Image:**  
Mitch Lynn  
*Picnic at Paluma III* [detail] 2014  
C-Type Photograph  
30 x 30 cm

**Image overside:**  
Mitch Lynn  
*Picnic at Paluma II* [detail] 2014  
C-Type Photograph  
30 x 30 cm

EXPERIENCE IT

Live



Perc Tucker Regional Gallery  
Cnr. Denham & Flinders St  
Townsville QLD 4810  
(07) 4727 9011  
ptrg@townsville.qld.gov.au  
[www.bit.ly/ptrgtcc](http://www.bit.ly/ptrgtcc)

@TCC\_Perc Tucker  
PercTuckerTCC  
Opening Hours  
Monday - Friday  
10am - 5pm  
Saturday - Sunday  
10am - 2pm



TOWNSVILLE CITY COUNCIL

Townsville City Council and the Manager Gallery Services invite you to

# MENTAL BUFFET

A PSYCHOLOGICAL ALL-YOU-CAN-EAT BY CARLY SHEIL

To be officially opened by

**Amy Bishop**

Community Engagement Officer, JCU

**11am, Saturday 6 December 2014**

RSVP: (07) 4727 9011

**Exhibition Dates:** 5 December 2014 - 25 January 2015

Perc Tucker Regional Gallery

An installation that examines mental illness and feelings of otherness, through combined representations of food and monsters.

Elements of the work include lifelike and seemingly edible polymer clay sculptures, in a style inspired by a lifelong love of puppetry, animatronics, and the macabre.



**Image:**

Carly Sheil

*Mental Buffet [detail] 2014*

Mixed media installation

Variable size

EXPERIENCE IT

**Live**



FIRST FLOOR

Perc Tucker Regional Gallery

Cnr. Denham & Flinders St

Townsville QLD 4810

(07) 4727 9011

ptrg@townsville.qld.gov.au

[www.bit.ly/ptrgtcc](http://www.bit.ly/ptrgtcc)

f @TCC\_Perc Tucker

PeriTuckerTCC

Opening Hours

Monday - Friday

10am - 5pm

Saturday - Sunday

10am - 2pm





TOWNSVILLE CITY COUNCIL

Townsville City Council and the Manager Gallery Services invite you to

## PERCIVAL'S LIFE DRAWING

A group exhibition by the **Percival's Life Drawing** attendees

The *Percival's Life Drawing* exhibition is an example of the life drawings that participants have produced during sessions at Perc Tucker Regional Gallery. Participants range from accomplished artists to first timers having a go. **Percival's Life Drawing** is for every: artist, hobbyist or merely the curious, to engage with life drawing.

Official opening:

**11am, Saturday 6 December 2014**

RSVP: (07) 4727 9011

**Exhibition Dates:** 6 December 2014 – 25 January 2015

Perc Tucker Regional Gallery



EXPERIENCE IT

Live



**Image: overside**  
Chantal Kwast-Greff  
*Portraits and Nudes [detail]* 2014

**Image above:**  
Richard Gillespie  
*Untitled (head)* 2014

Perc Tucker Regional Gallery  
Cnr. Denham & Flinders St  
Townsville QLD 4810  
☎ (07) 4727 9011  
✉ [ptrg@townsville.qld.gov.au](mailto:ptrg@townsville.qld.gov.au)  
🌐 [www.bit.ly/ptrgtcc](http://www.bit.ly/ptrgtcc)

📱 @TCC\_Perc Tucker  
🐦 PercTuckerTCC  
Opening Hours  
Monday - Friday  
10am - 5pm  
Saturday - Sunday  
10am - 2pm



TOWNSVILLE CITY COUNCIL

Townsville City Council and the Manager Gallery Services invite you to the launch of

# EMPTY VESSEL

## An exhibition by Fay Withers

*Empty Vessel* is influenced by Fay's time spent in China whilst on a residency in 2013. This body of work aims to draw attention to, and examine, the result of more than three decades of communist instituted family planning called the 'One Child Policy'.

### To be officially opened by

Wendy Bainbridge  
President of North Queensland Potters Association Inc.

**11am Sunday 21 December 2014**

**EXHIBITION DATES: 19 DECEMBER 2014 - 15 FEBRUARY 2015**

**SHOWING IN THE NICHE SPACE, PERC TUCKER REGIONAL GALLERY**

### Images:

Fay Withers  
*Vessels of Meaning [detail]* 2014  
Decals on clay  
30 cm high



EXPERIENCE IT  
**Live**



NICHE SPACE

Perc Tucker Regional Gallery  
Cnr. Denham & Flinders St  
Townsville QLD 4810  
(07) 4727 9011  
ptrg@townsville.qld.gov.au  
[www.bit.ly/ptrgtcc](http://www.bit.ly/ptrgtcc)

@TCC\_Perc Tucker  
PercTuckerTCC  
Opening Hours  
Monday - Friday  
10am - 5pm  
Saturday - Sunday  
10am - 2pm





TOWNSVILLE CITY COUNCIL

Townsville City Council and the Manager Gallery Services invite you to the launch of

# China: A Changing Landscape

An exhibition by Irene Rae

Rae's residency in Jingdezhen culminated in an empathetic vision of how rural China is modernising. The delicate balance between the old ways of doing, the spiritual elements and the current economic climate, coexisted fluidly. This seamless reference to the past and attentiveness to the present is what she found intriguing and inspiring.

## To be officially opened by

Wendy Bainbridge

President of North Queensland Potters Association Inc.

**11am Sunday 21 December 2014**

**EXHIBITION DATES: 19 DECEMBER 2014 - 15 FEBRUARY 2015**

**SHOWING IN THE ACCESS SPACE, PERC TUCKER REGIONAL GALLERY**

## Image:

Irene Rae

*The Great Wall [detail] 2014*

Oil on canvas

5 panels, each 75 x 55 cm

EXPERIENCE IT

Live



ACCESS SPACE

Perc Tucker Regional Gallery  
Cnr. Denham & Flinders St  
Townsville QLD 4810  
(07) 4727 9011  
ptrg@townsville.qld.gov.au  
www.bit.ly/ptrgtcc

@TCC\_Perc Tucker

PercTuckerTCC

Opening Hours

Monday - Friday

10am - 5pm

Saturday - Sunday

10am - 2pm