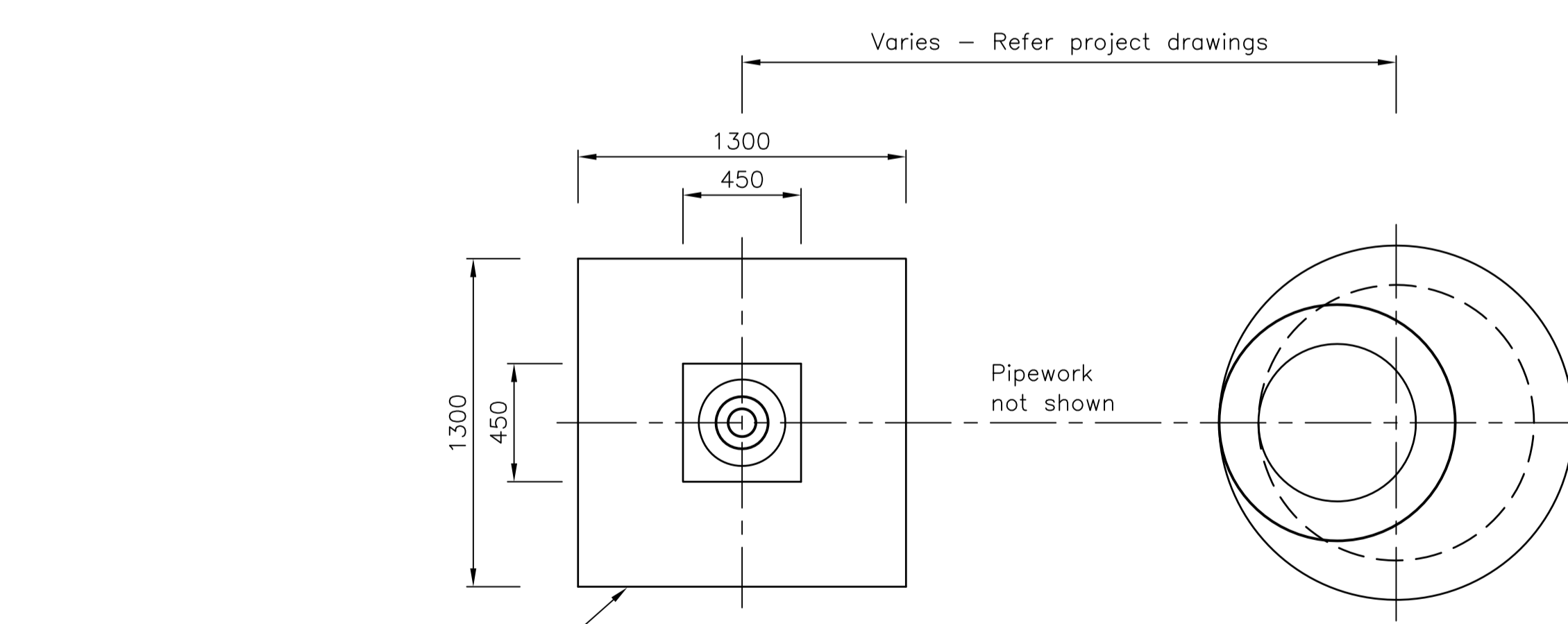
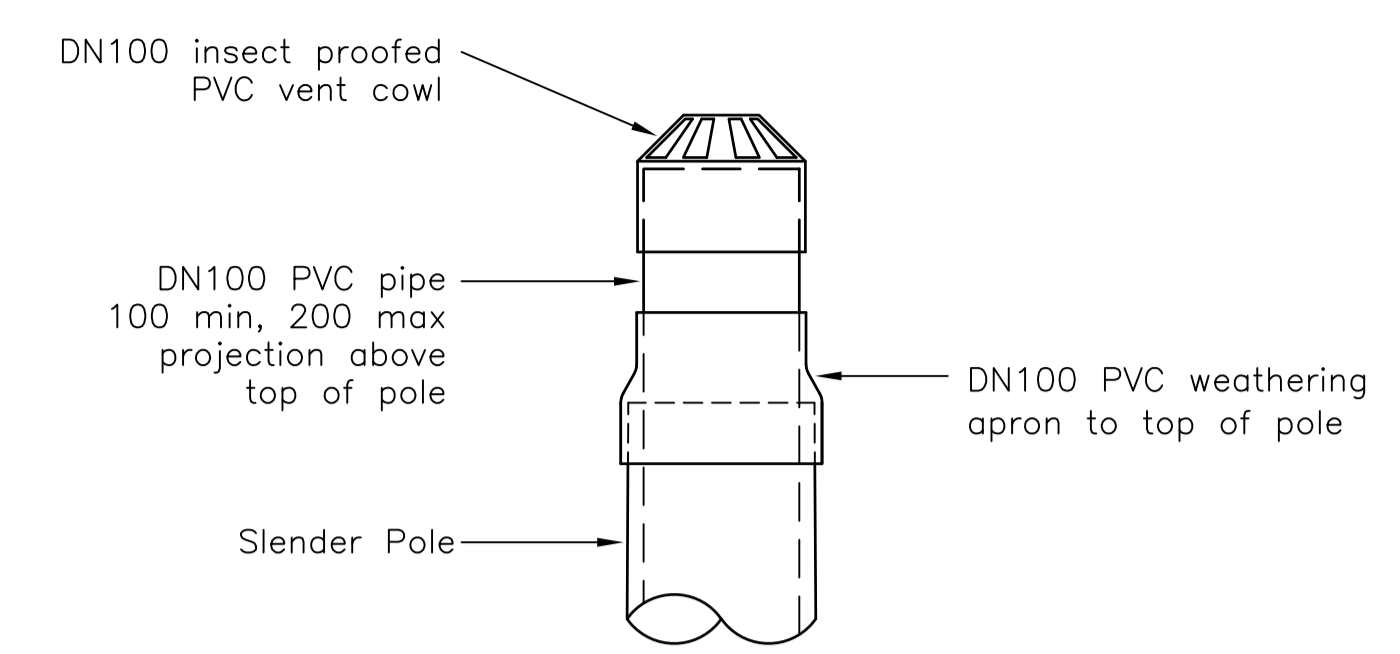


ELEVATION

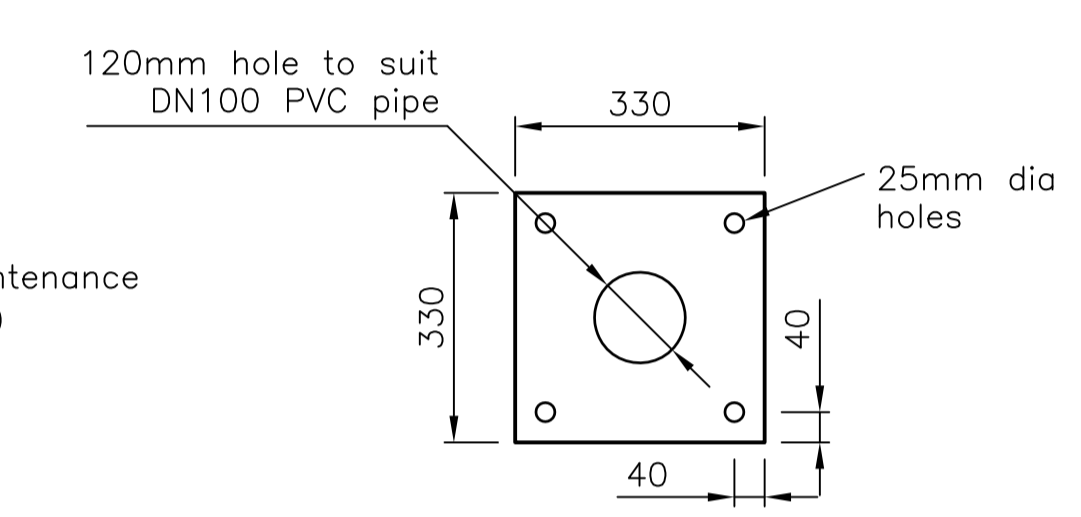


PLAN

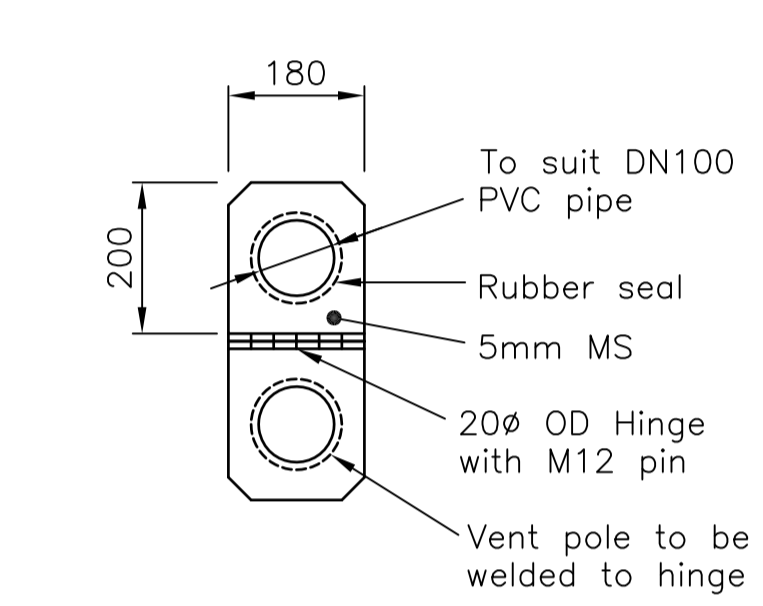
VENT AT SEWERAGE RISING MAIN RECEIVING MAINTENANCE HOLES



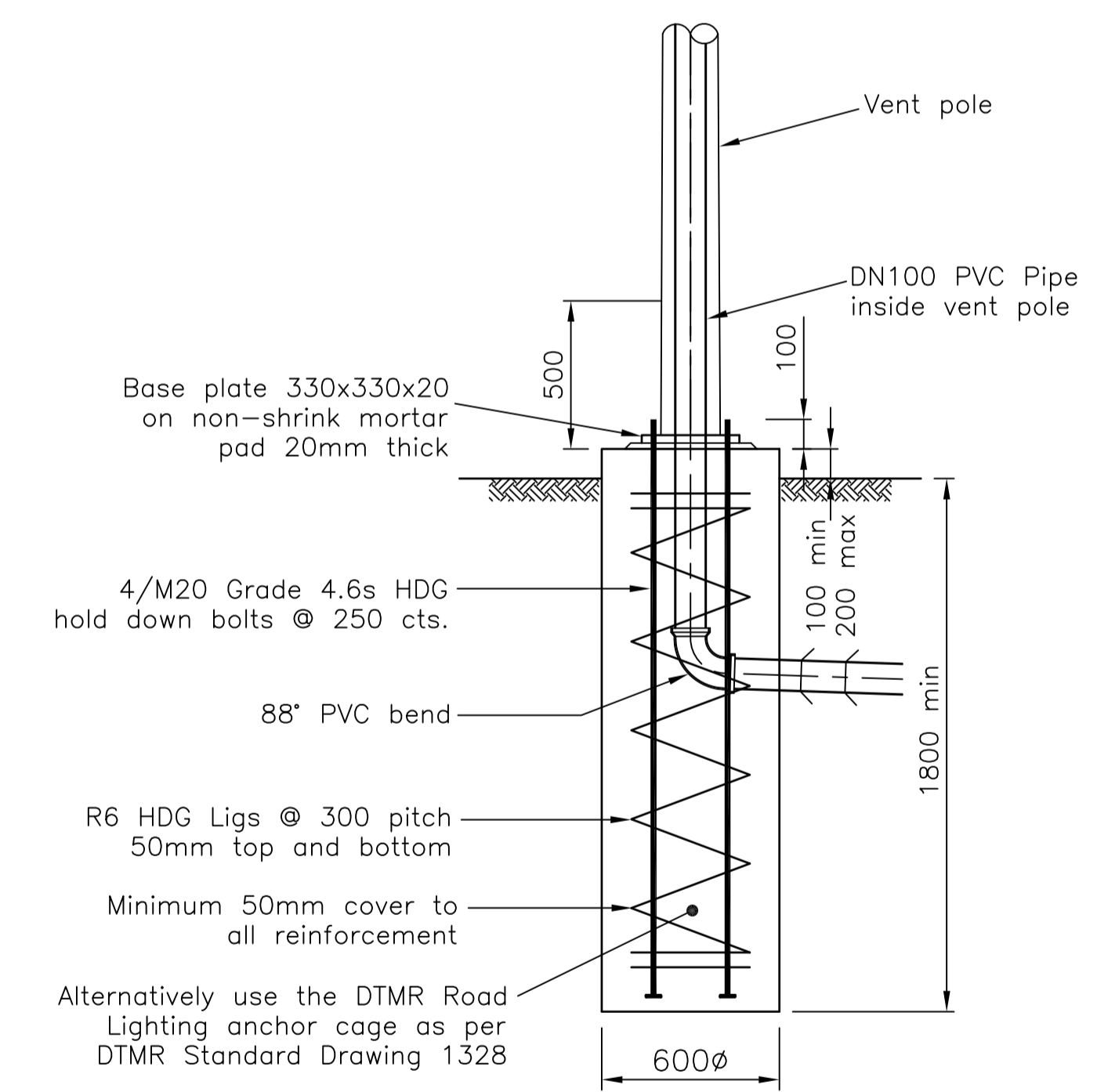
VENT TOP DETAIL



BASE PLATE

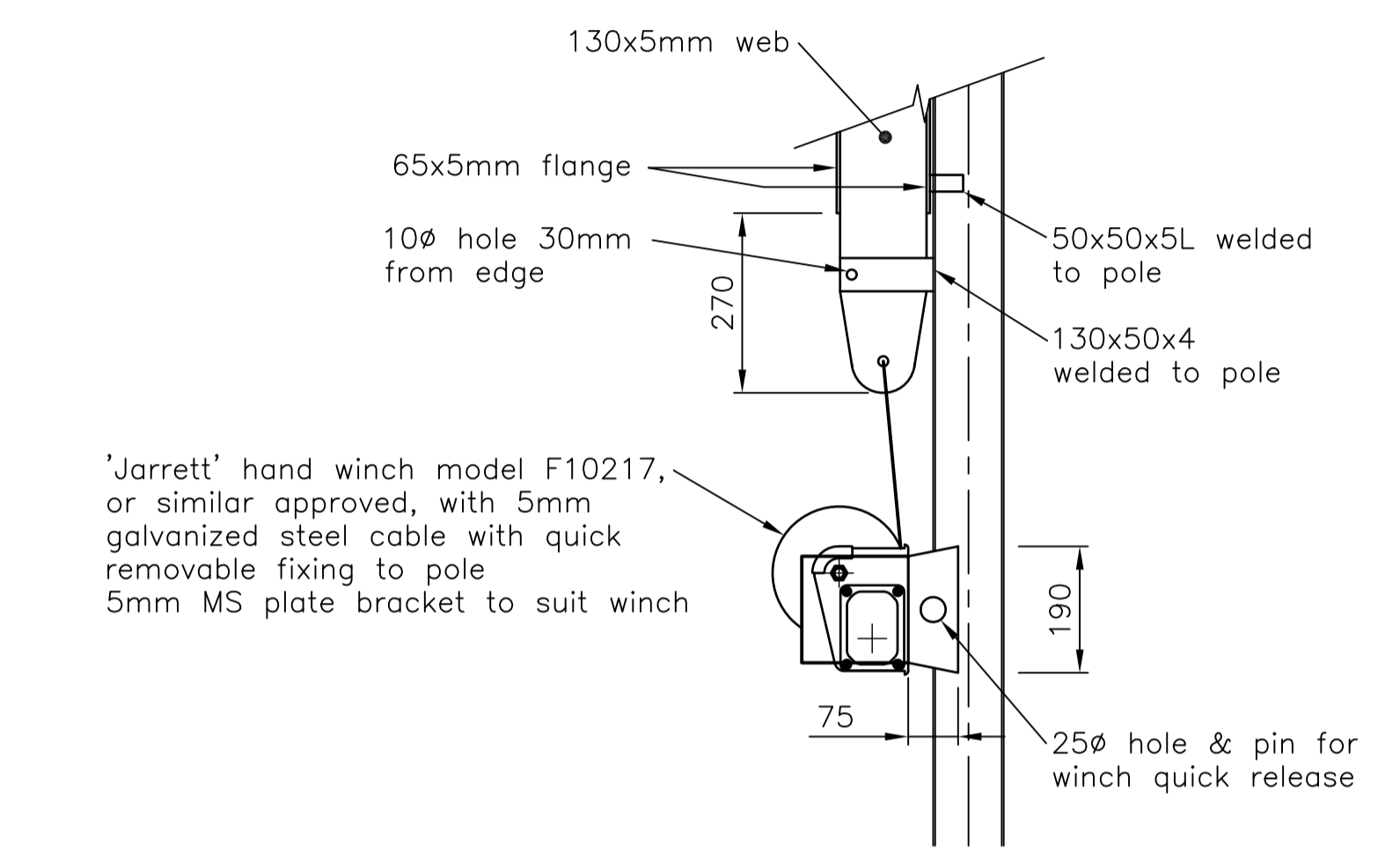


HINGE DETAIL

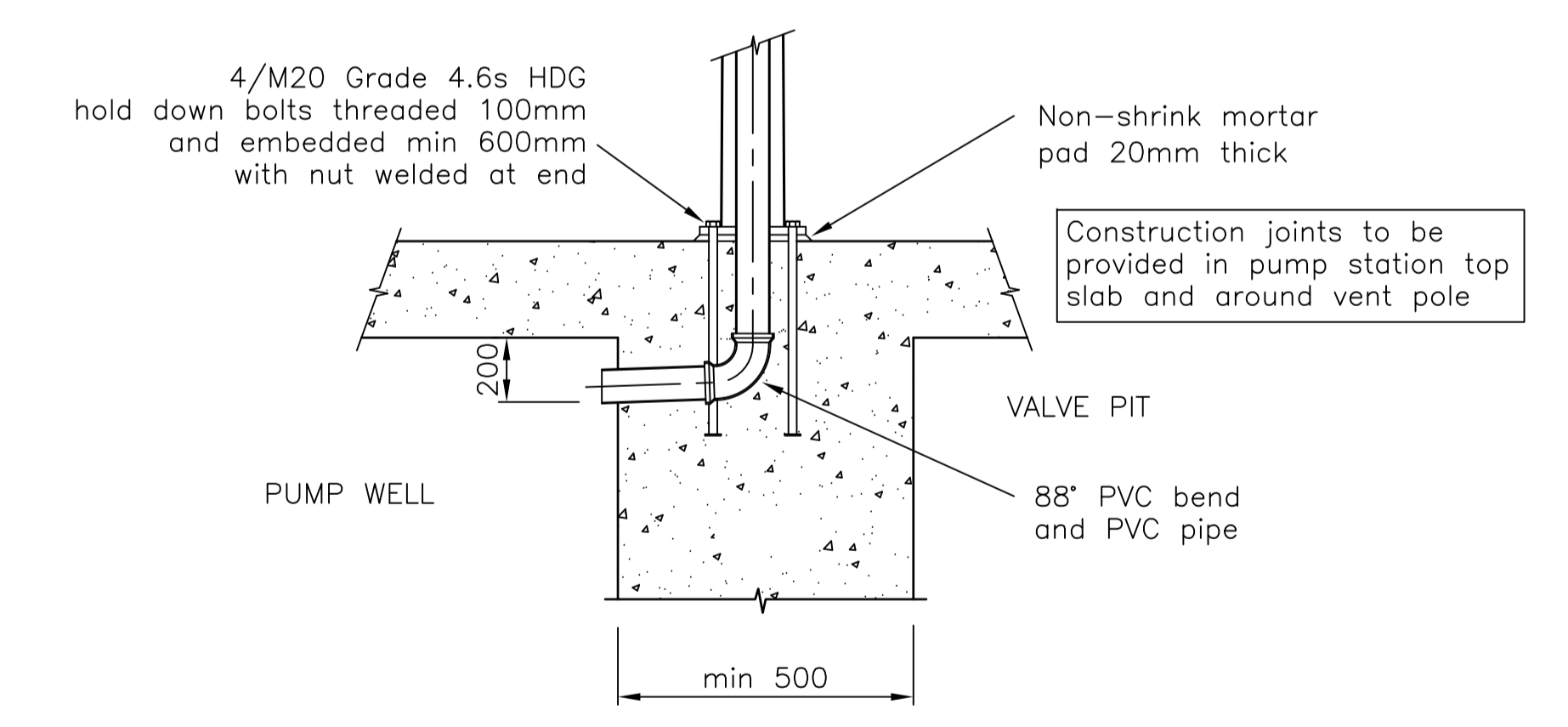


FOOTING FOR COHESIVE SOILS

- NOTES**
1. All dimensions are in millimetres unless noted otherwise
 2. Footing dimension is sized for allowable soil bearing capacity of 100kPa and design wind speeds of 70m/s for Terrain Category 2.0.
 3. All stainless steel items to be Grade 316 or better.
 4. Concrete footing to be Grade N32, unless otherwise noted on design drawings or specifications.
 5. Backfill over footing to be compacted in 200mm layers to 95% of MDD (standard) of the material.
 6. Casting of vent footing and uPVC surround shall be monolithic with pump station slab.
 7. All mild steel items to be hot dipped galvanized.
 8. Soil type to be determined from geotechnical assessment or confirmed by superintendent.



HAND WINCH DETAIL



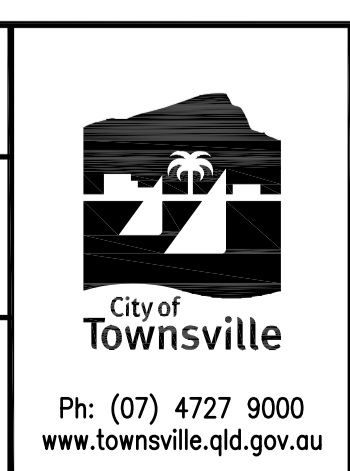
VENT AT SEWERAGE PUMP STATION

No.	DATE	DESCRIPTION	AP'D
C	02/2014	DETAILS AND NOTES CHANGED	
B	08/2013	DESIGN AND NOTES AMENDED	
A		ORIGINAL ISSUE	
REVISIONS			

NOTES : SUPERSEDES TS3A, 10043A, 10445C AND 34107A

Full Size A1
Not to Scale

DRAWN: DESIGN OFFICE
CHECKED: DM
Design Engineer Approved: Original Signed by Steven McKenzie
Date: 18.02.14
Manager Approved: Original signed by Steve Gray
Date: 18.02.14



VENTS AT SEWERAGE RISING MAIN RECEIVING INSPECTION CHAMBERS AND PUMP STATIONS

STANDARD DRAWING SEWERAGE
SD-450 C