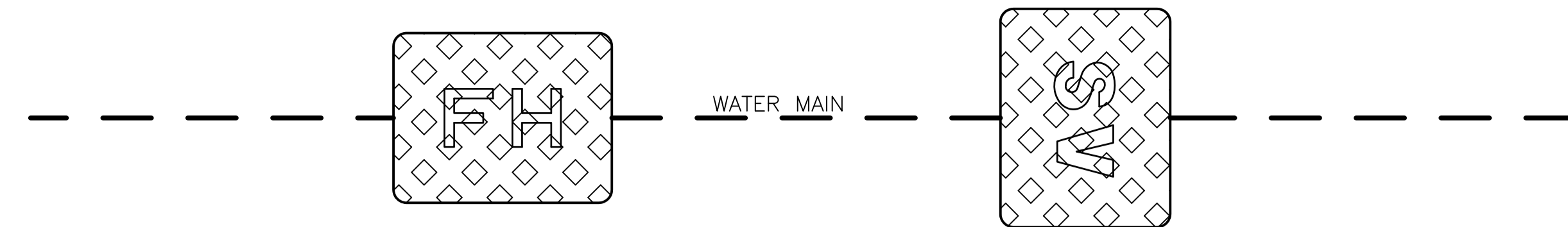
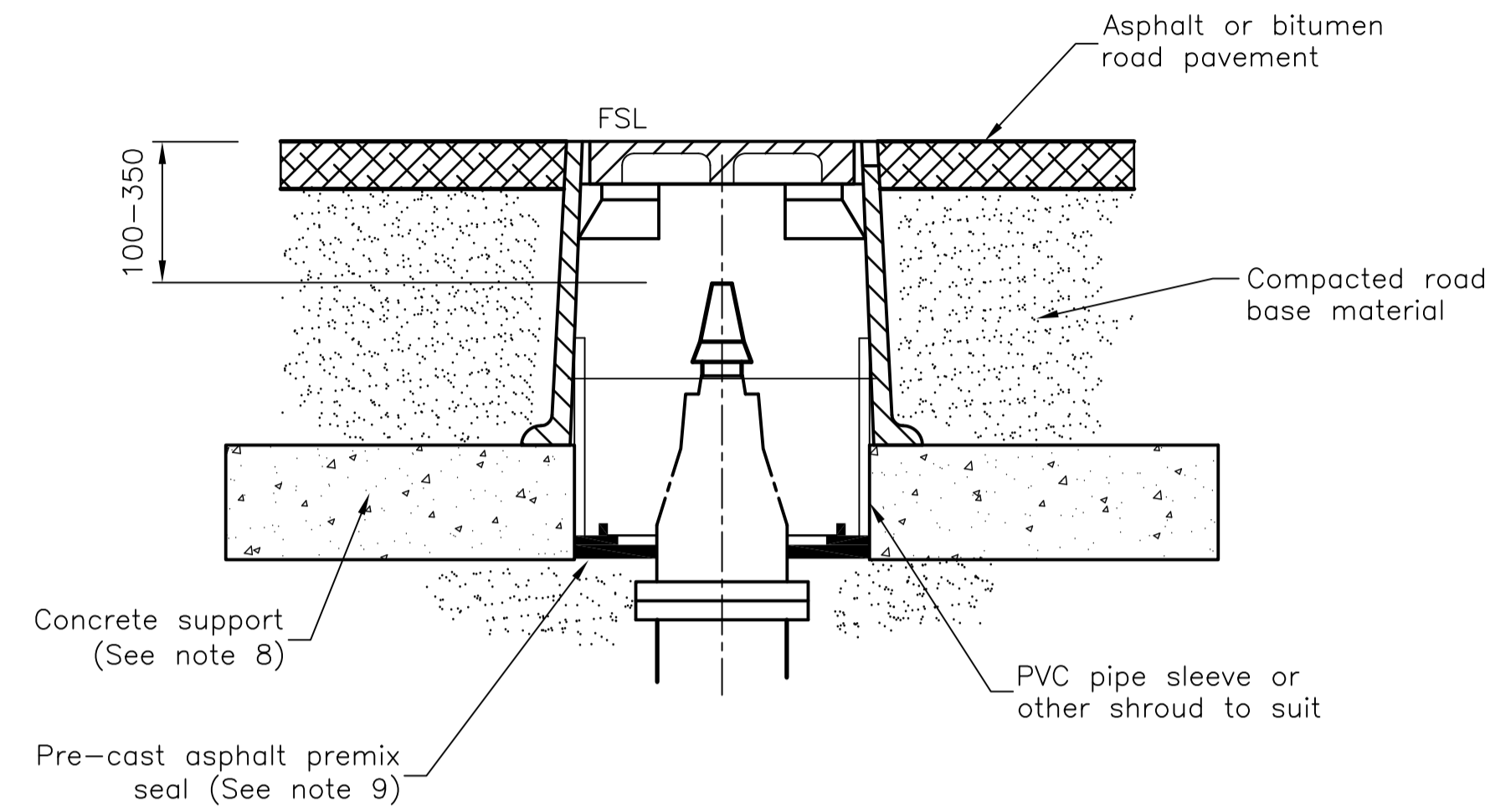


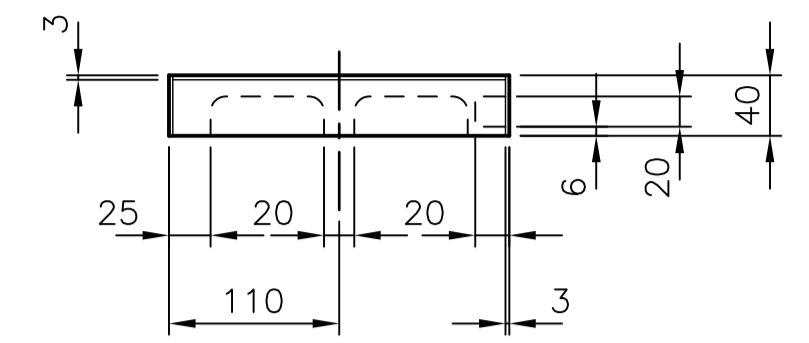
VALVES DEEPER THAN STANDARD DEPTH



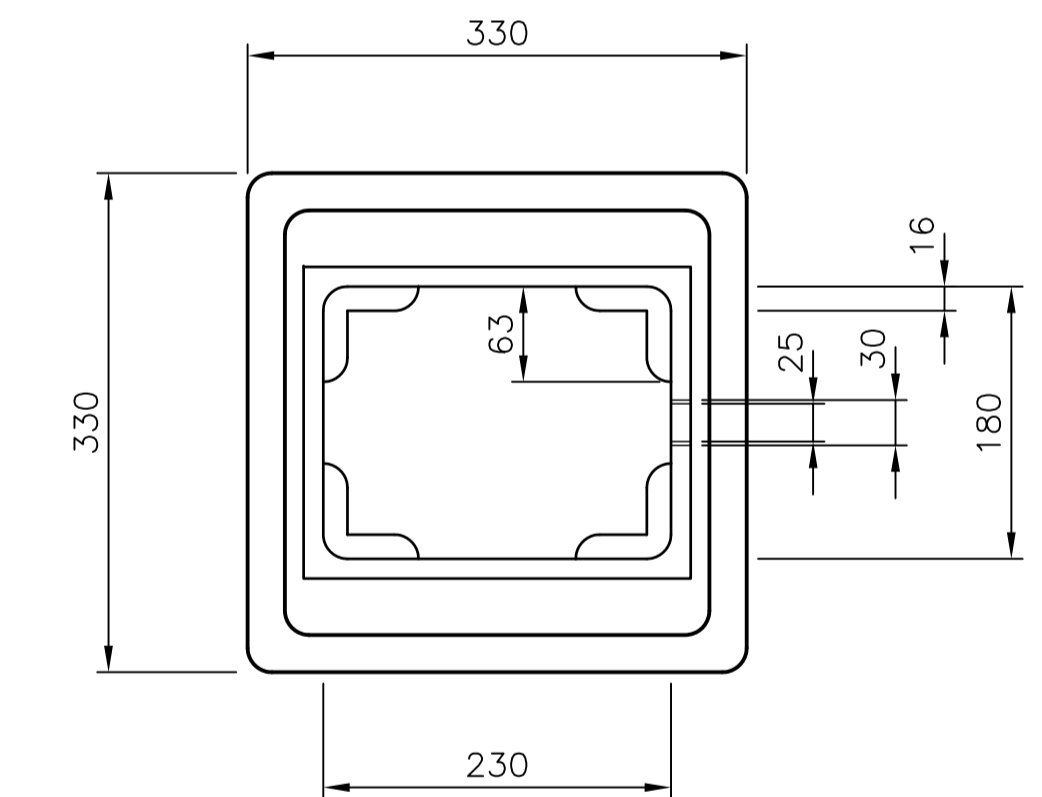
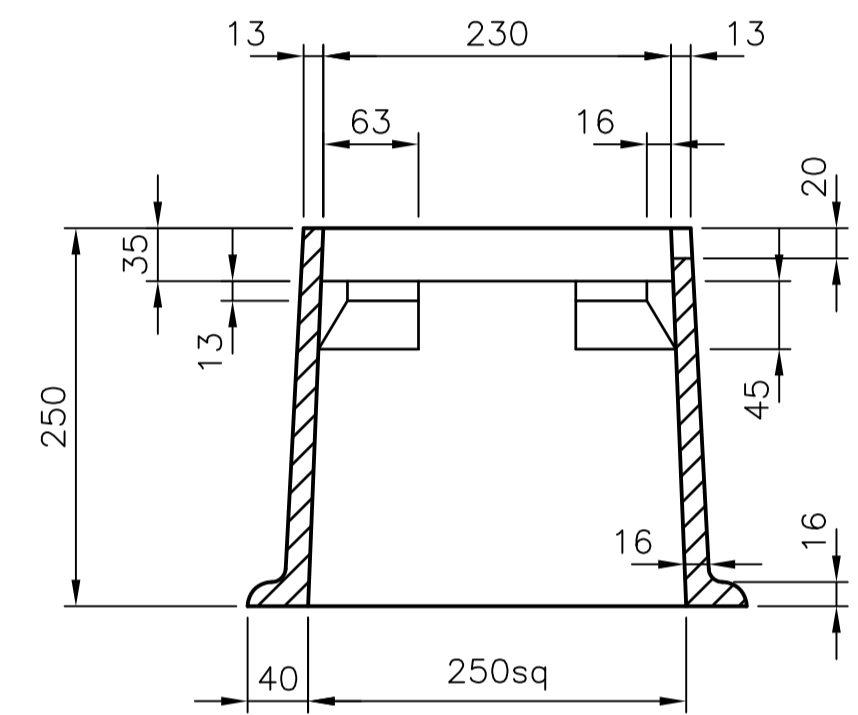
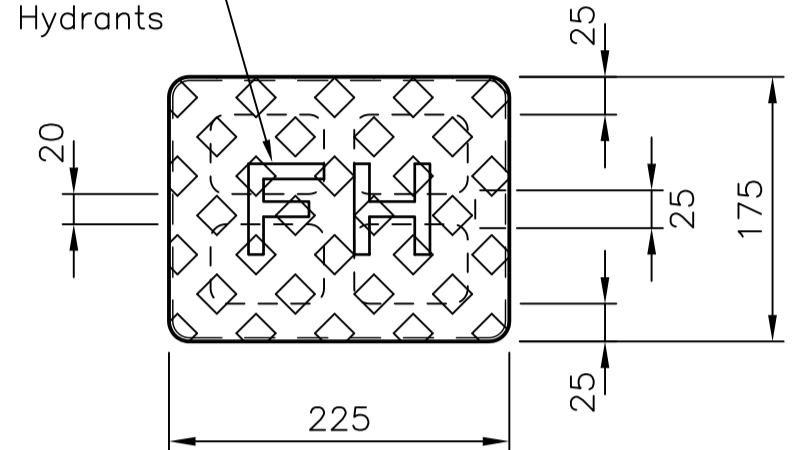
FIRE HYDRANT AND VALVE SURFACE BOX ORIENTATION



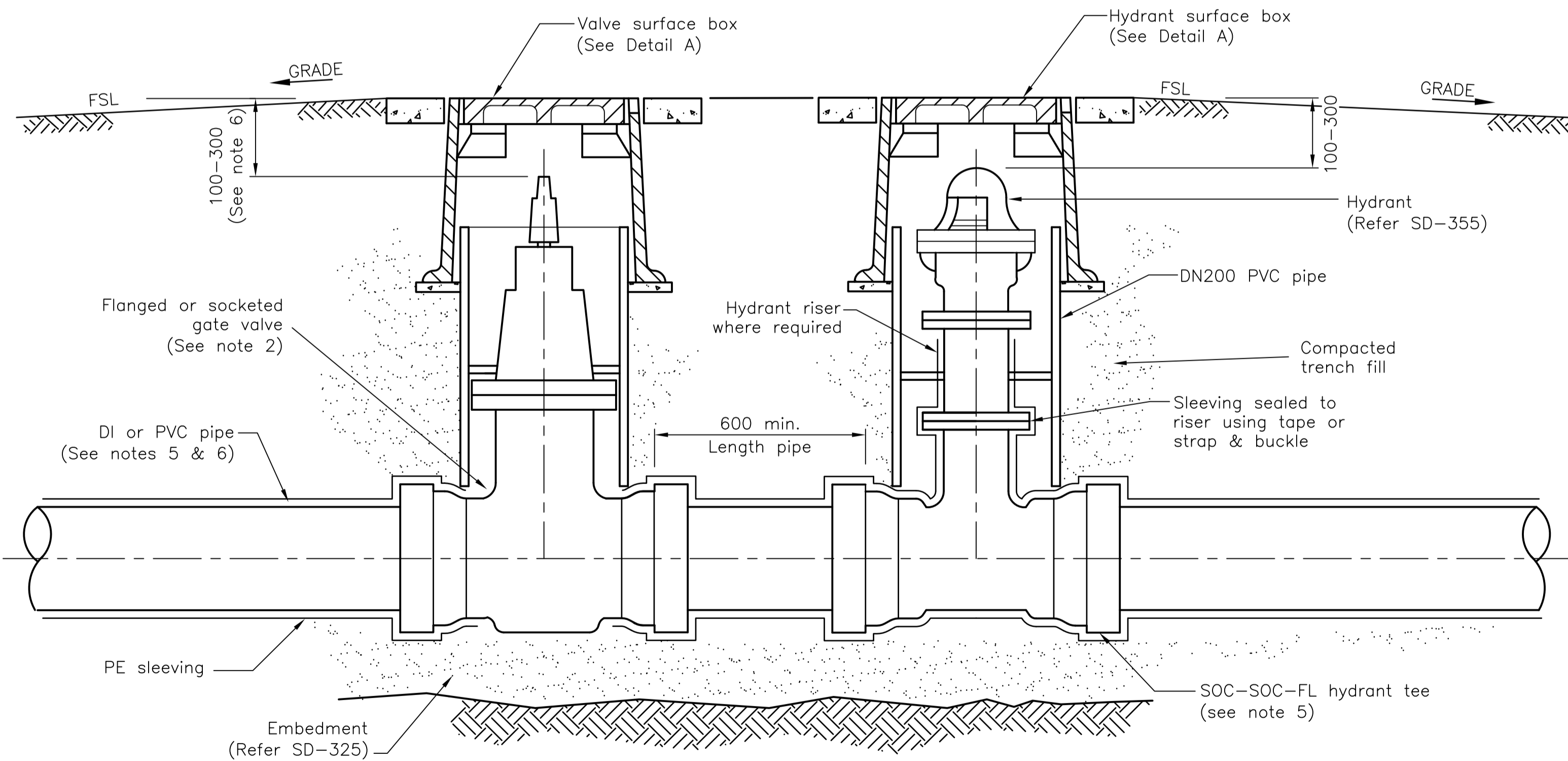
TRAFFICABLE INSTALLATION



Embossed lettering to be:
S.V. for stop valves,
F.H. for Fire Hydrants



DETAIL A



VALVES & HYDRANTS AT STANDARD DEPTHS

NOTES

1. All dimensions in millimetres.
2. Valves DN 200 and greater to be restrained. See SD-372
3. To prevent the transfer of traffic load to the main, ensure shroud and any shroud support ring does not come in contact with the gate valve or hydrant.
4. Install an extension spindle where depth from surface level to top of gate valve exceeds 350.
5. DI pipes and fittings with bituminous external coating to be protected with polyethylene sleeving.
6. Depth of main may be locally increased to achieve required minimum valve spindle cover.
7. Trafficable surface box covers and frames to be in accordance with AS3996, Class D loading.
8. Concrete support slabs designed to span the trench to extend at least 300 on to supportive earth both sides of trench.
9. Place 20 thick asphalt premix to seal between the valve and shroud.
10. All non trafficable surface boxes to be in accordance with AS3996 - Class B loading.
11. Install cover, frame, spindle sleeve, shroud and shroud support so that no loading is transmitted to the valve or pipe.
12. For non trafficable applications elevate cover up to 75 above finished surface level and grade soil away to prevent water entry.
13. Install an extension spindle where distance from the surface to valve spindle exceeds 350.
14. Use of compressed recycled plastic valve and hydrant surround allowed subject to Townsville water product approval

No.	DATE	DESCRIPTION	AP'D
B		NOTES AND REFERENCES AMENDED AND DETAIL ADDED	
A		ORIGINAL ISSUE	
REVISIONS			

NOTES : BASED ON FORMER WSA A DRAWING
WAT-1301, 1303, 1304, 1305 & 1306

Full Size A1

Not to Scale

DRAWN: DESIGN OFFICE

CHECKED: D Moseley

Design Engineer Approved: P Turl

Date: 24-07-2012

Manager Approved: M Harvey

Date: 24-07-2012



Ph: (07) 4727 9000
www.townsville.qld.gov.au

**TYPICAL VALVE & HYDRANT INSTALLATION
VALVE ARRANGEMENT**

**STANDARD
DRAWING**

WATER

SD-350

B