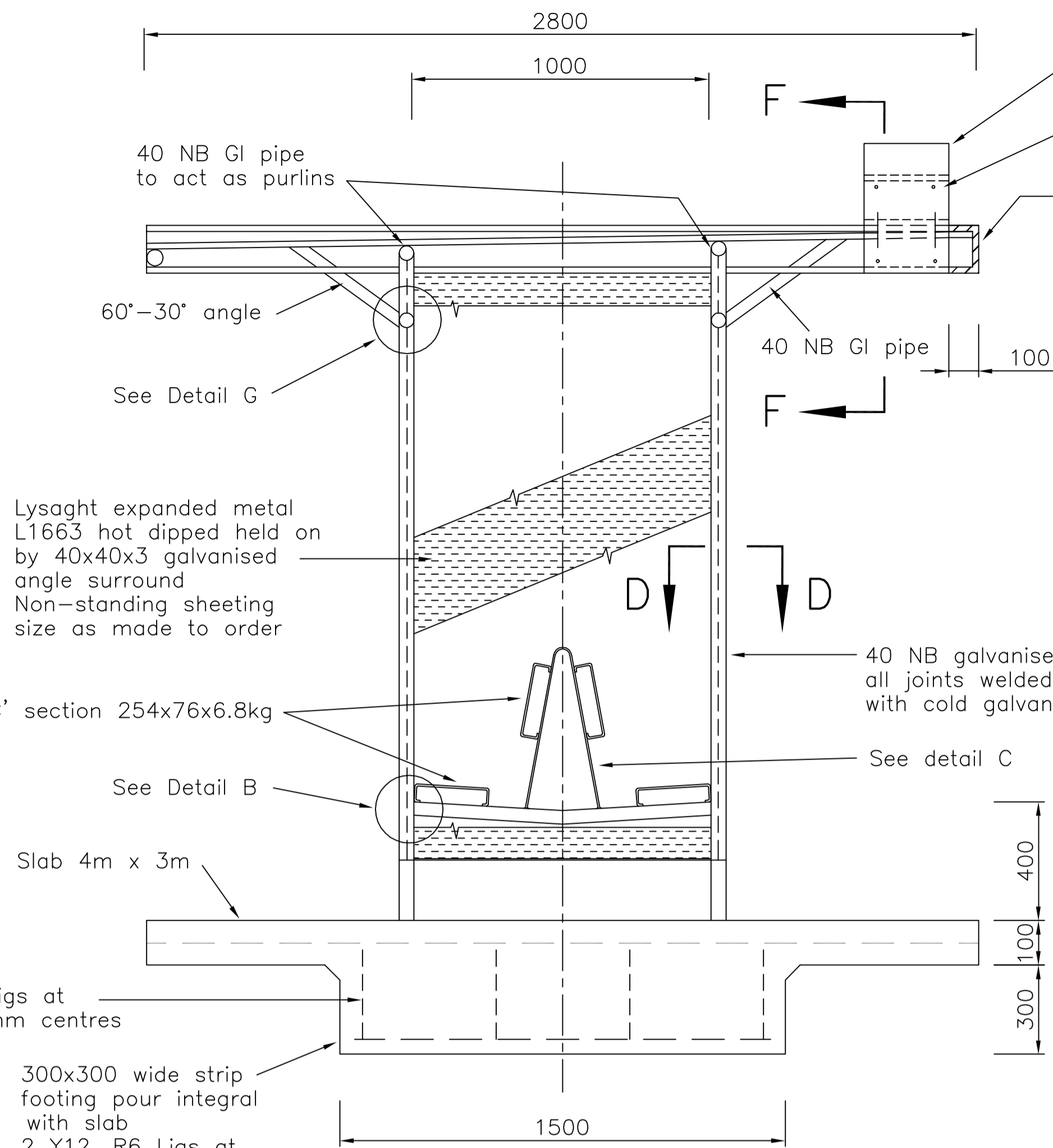
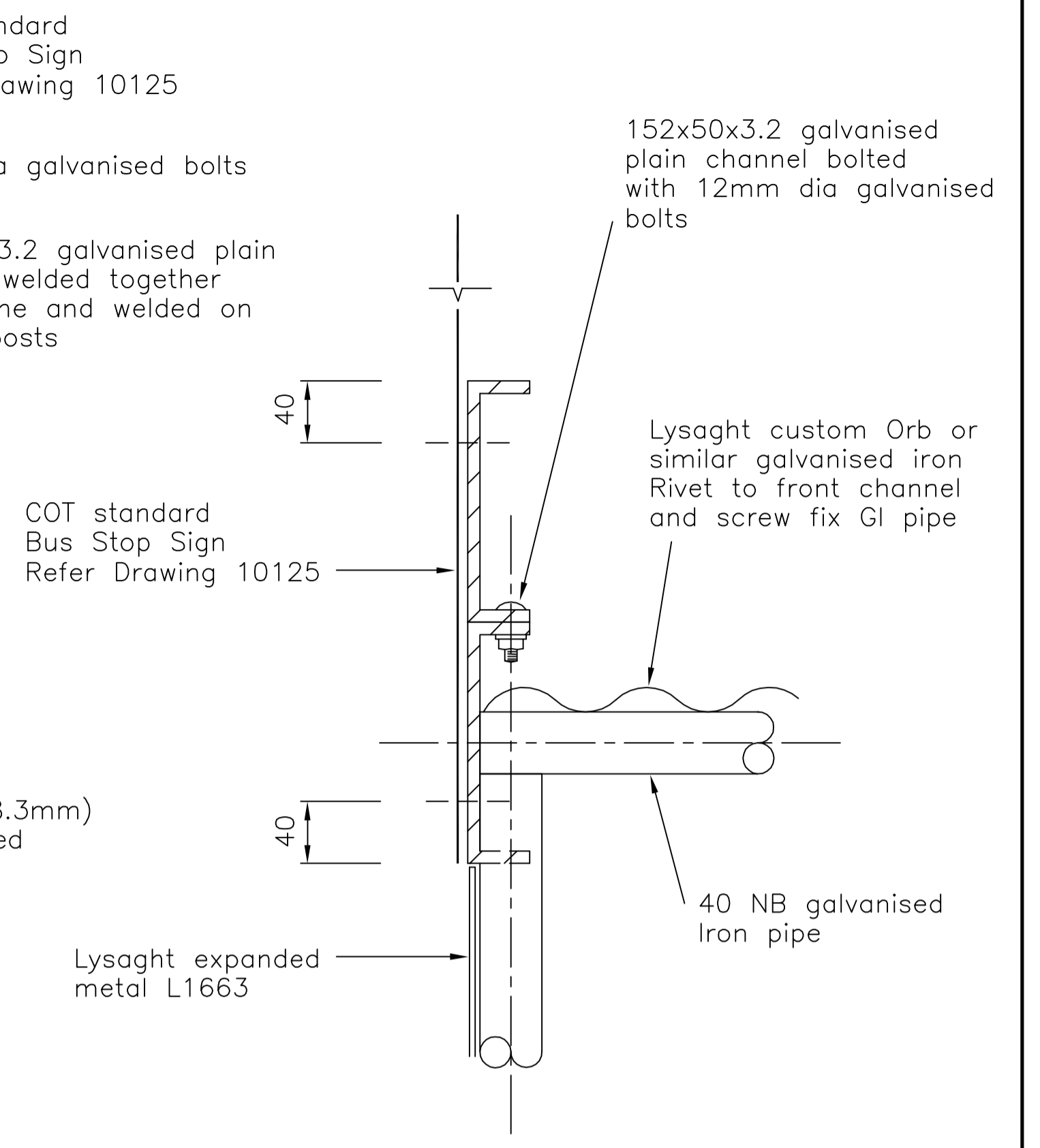


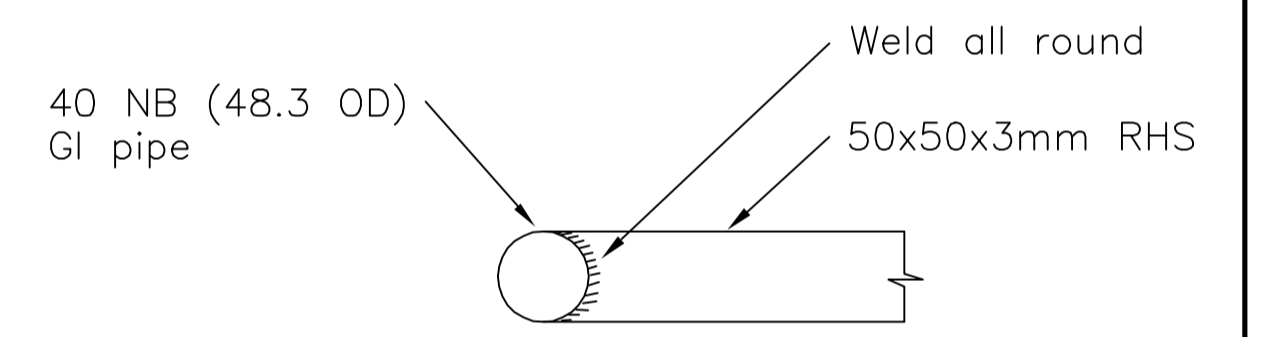
ELEVATION



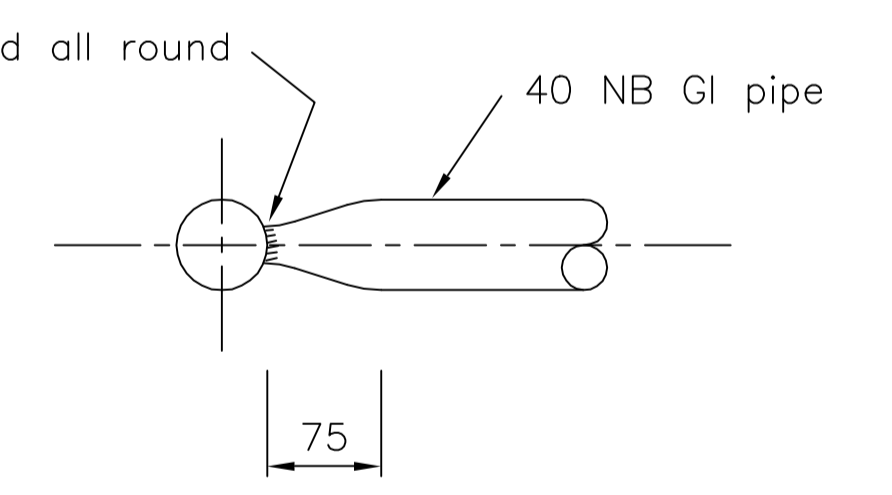
SECTIONAL ELEVATION A-A



SECTION F-F



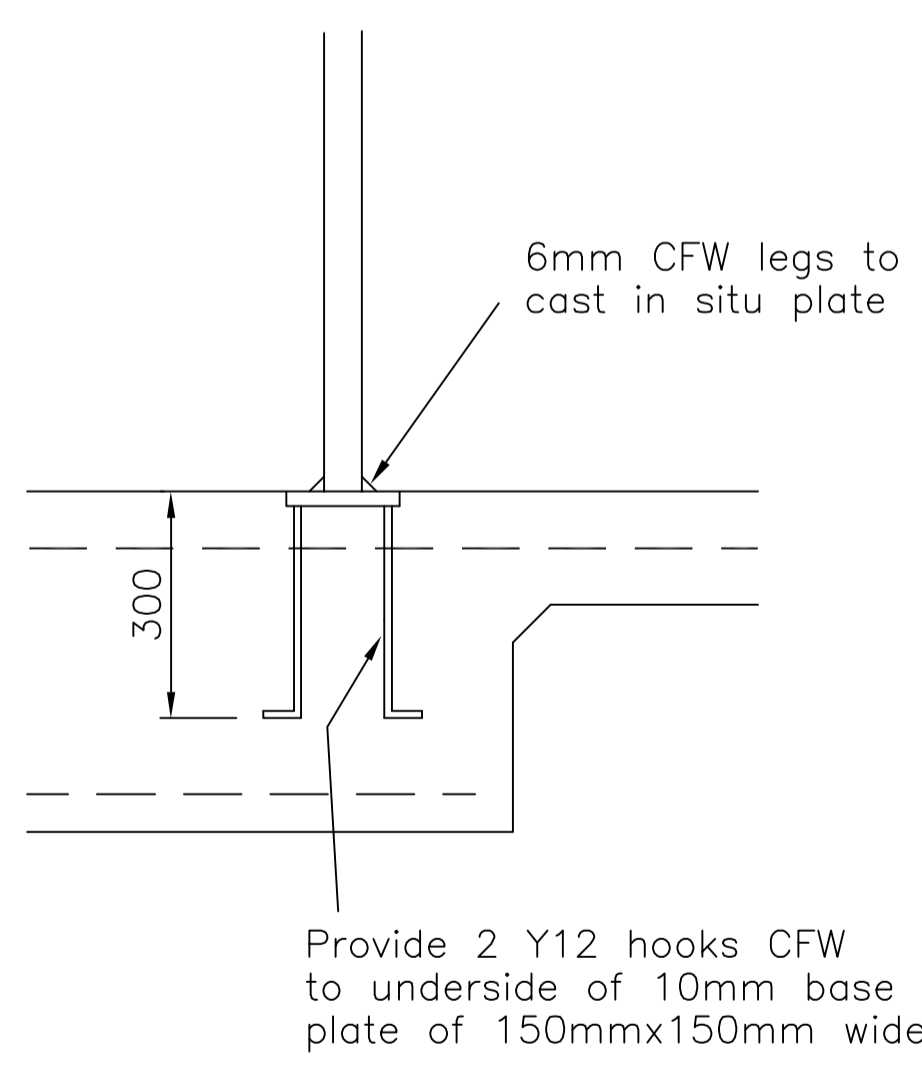
DETAIL B



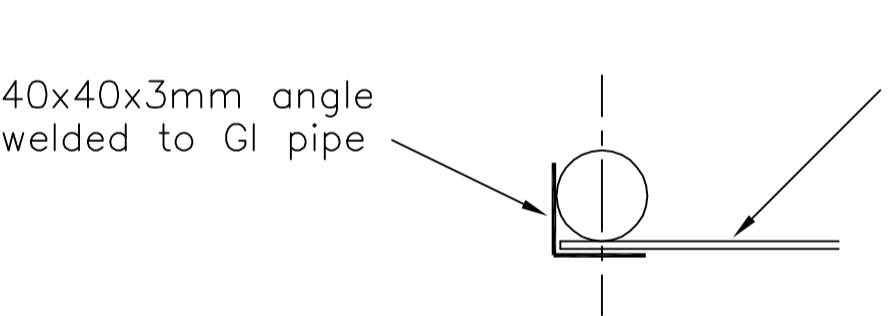
DETAIL G

- NOTES**
- All dimensions are in millimetres unless noted otherwise.
  - Galvanised pipe is to be 40 NB (48.3) medium heavy gauge.
  - The channel frame is to be 152mmx50x3.2kg galvanised steel.
  - 'C' Section is to be 254x76x6.8kg specified C25020 galvanised 2275 coating and all in accordance with the provision of AS1538 SAA cold formed steel structures code.
  - All welds to be 6mm fillet.
  - Galvanised R.H. sections to be 50x50x3mm.
  - N25 concrete (80mm slump +/- 15mm).

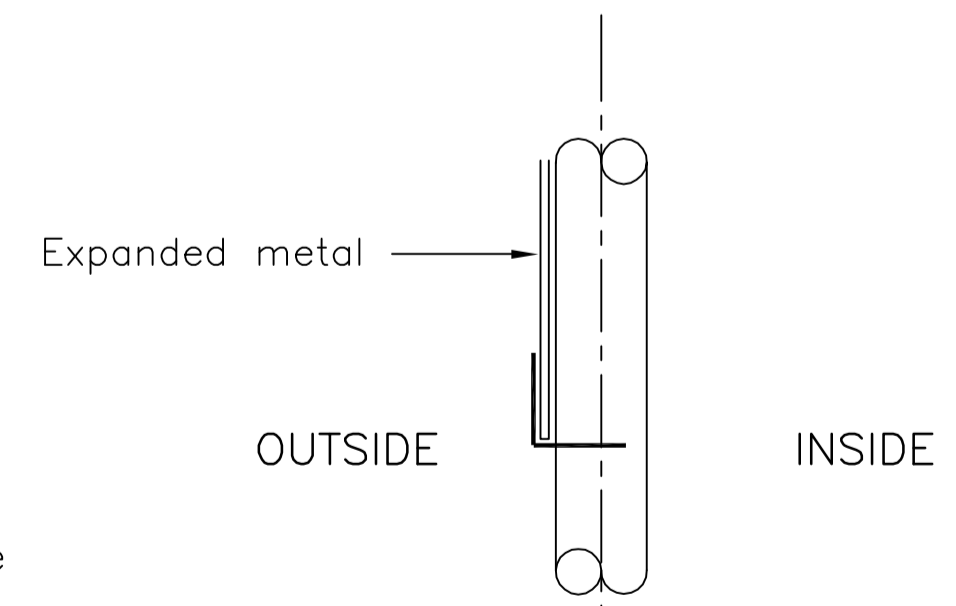
**ALTERNATIVE**  
A 50x50x3mm galvanised SHS can be used where 40 NB pipe is indicated on the drawing.



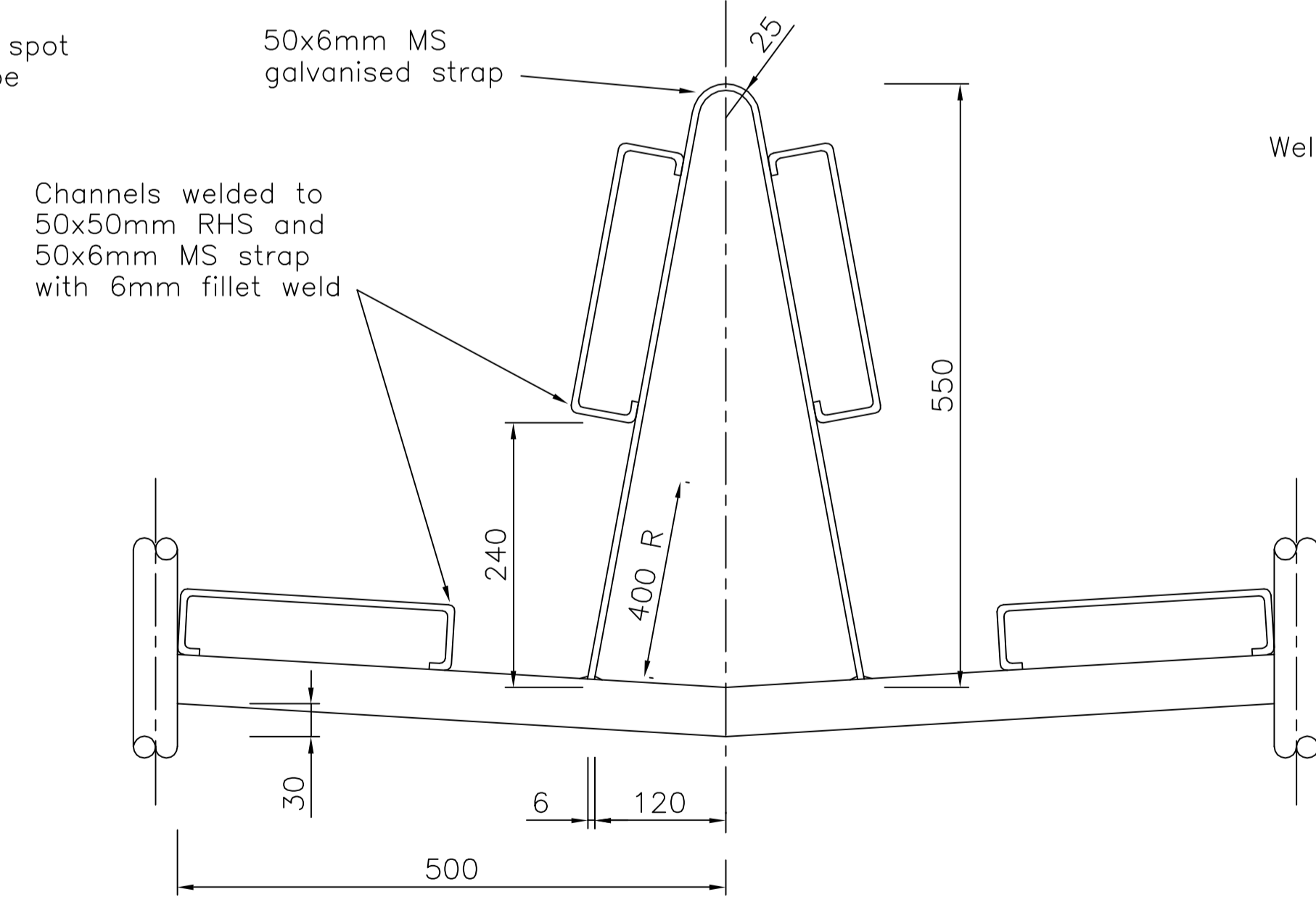
HOLD DOWN DETAIL



SECTION D-D



SECTION E-E



DETAIL C

NOTES : Not to Scale  
Supersedes TR13D and 10028A

**CITY OF THURINGOWA**  
86 Thuringowa Drive, Thuringowa Central, QLD. 4817  
Phone: 07 4773 8411 Fax: 07 4773 8600

DRAWN: NRN Engineer Approved: Original Signed by B.Sue Date: 4/2000  
CHECKED: WJP D.E.S. Approved: Original Signed by B.Bailey Date: 5/2000

STANDARD BUS SHELTER

**STANDARD DRAWING ROADWORKS**  
10120  
A

No.	DATE	DESCRIPTION	AP'D
A	5/4/2000	ORIGINAL ISSUE	
REVISIONS			