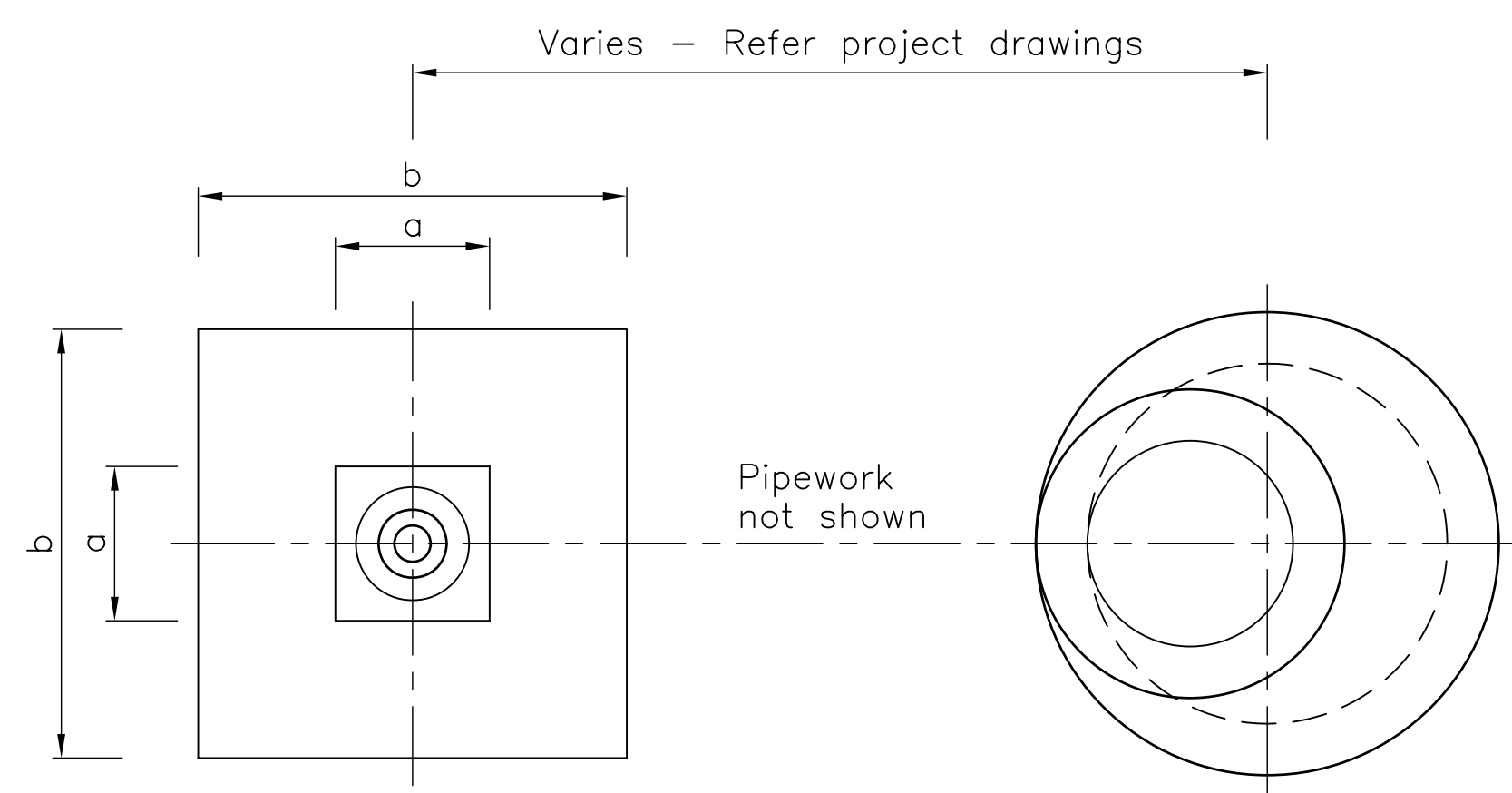
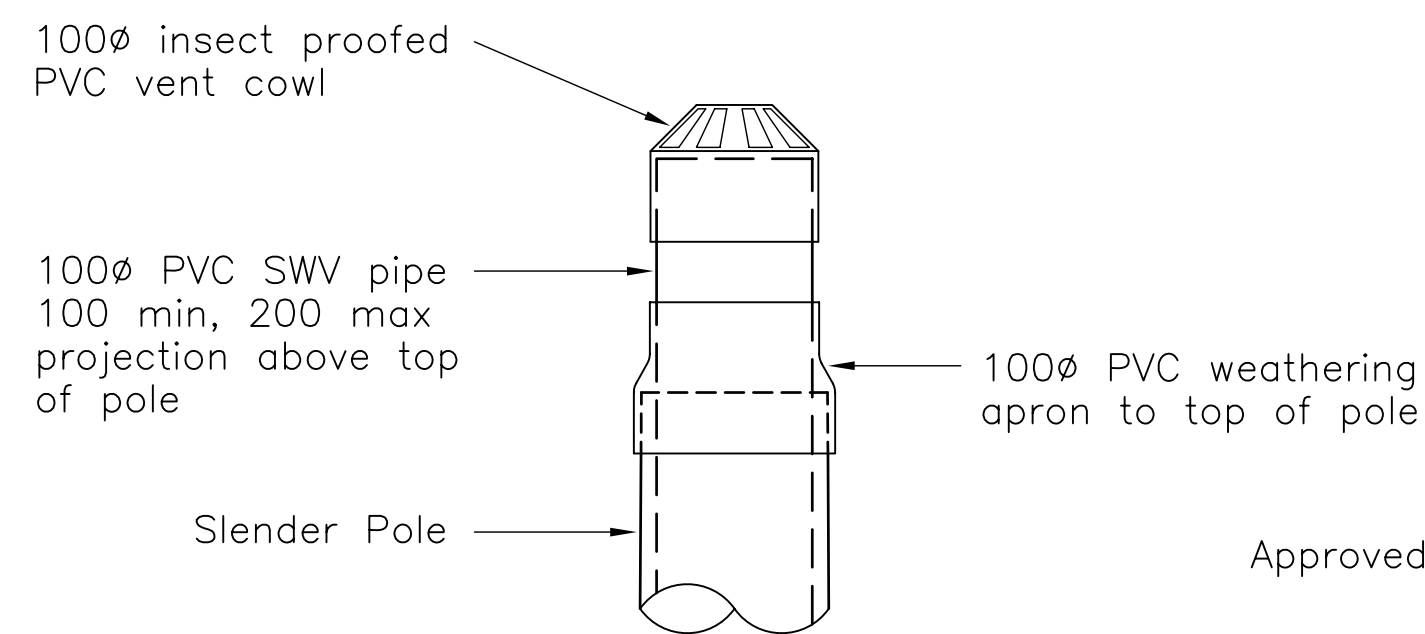


TYPICAL ELEVATION TO INSPECTION CHAMBER / MANHOLE

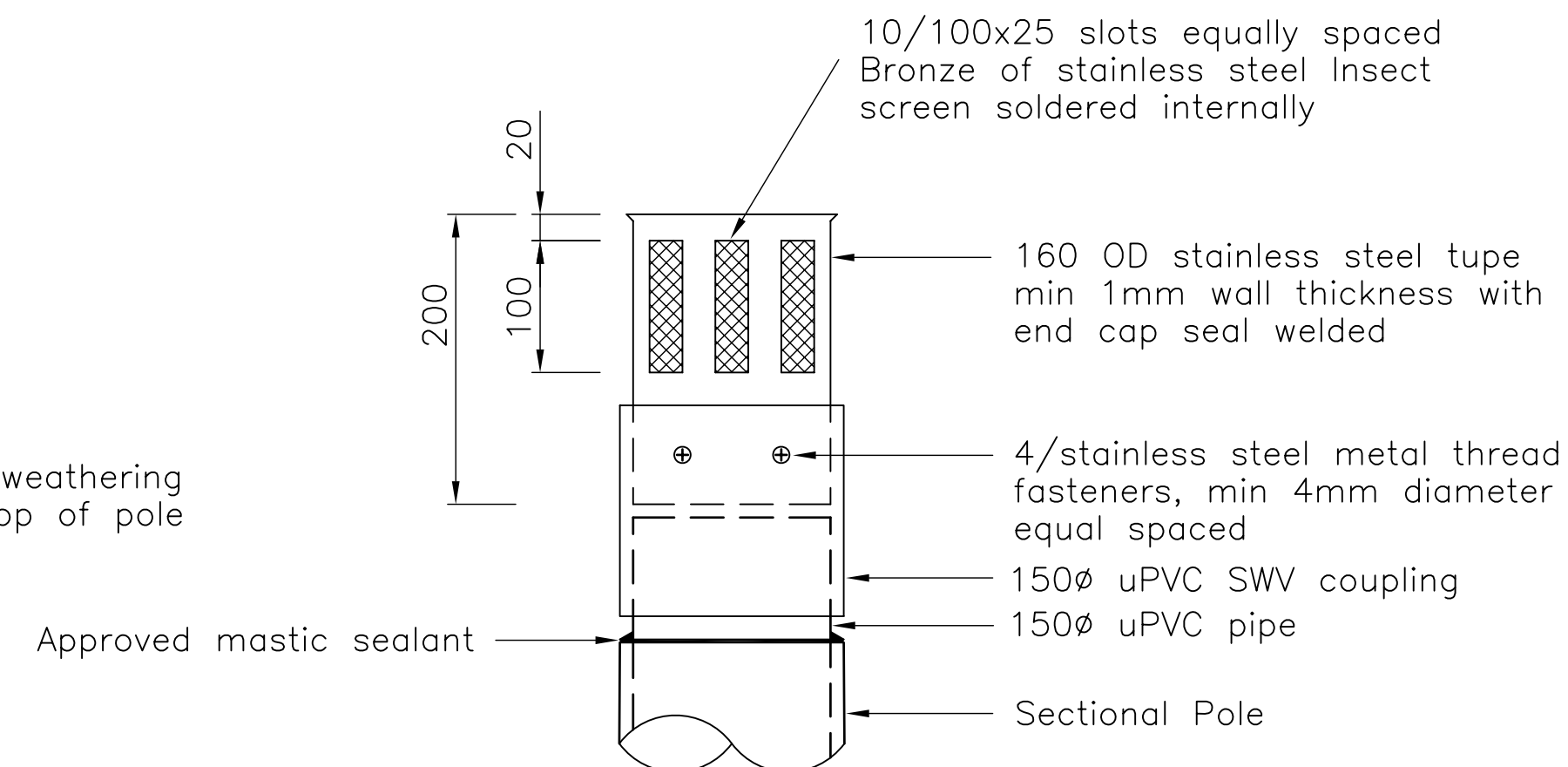


PLAN

VENT AT SEWERAGE RISING MAIN RECEIVING MANHOLE INSPECTION CHAMBERS

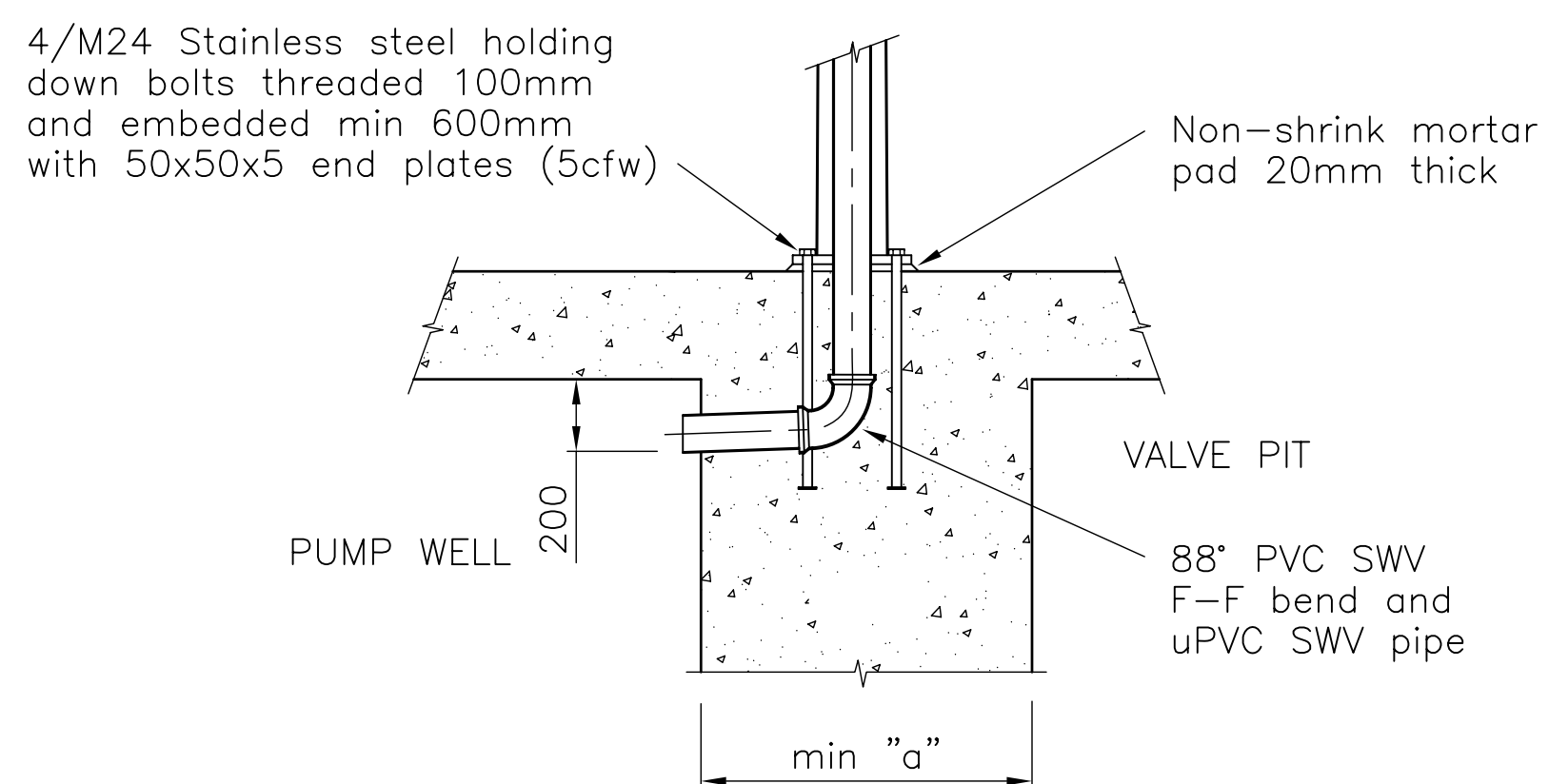


TYPE V1



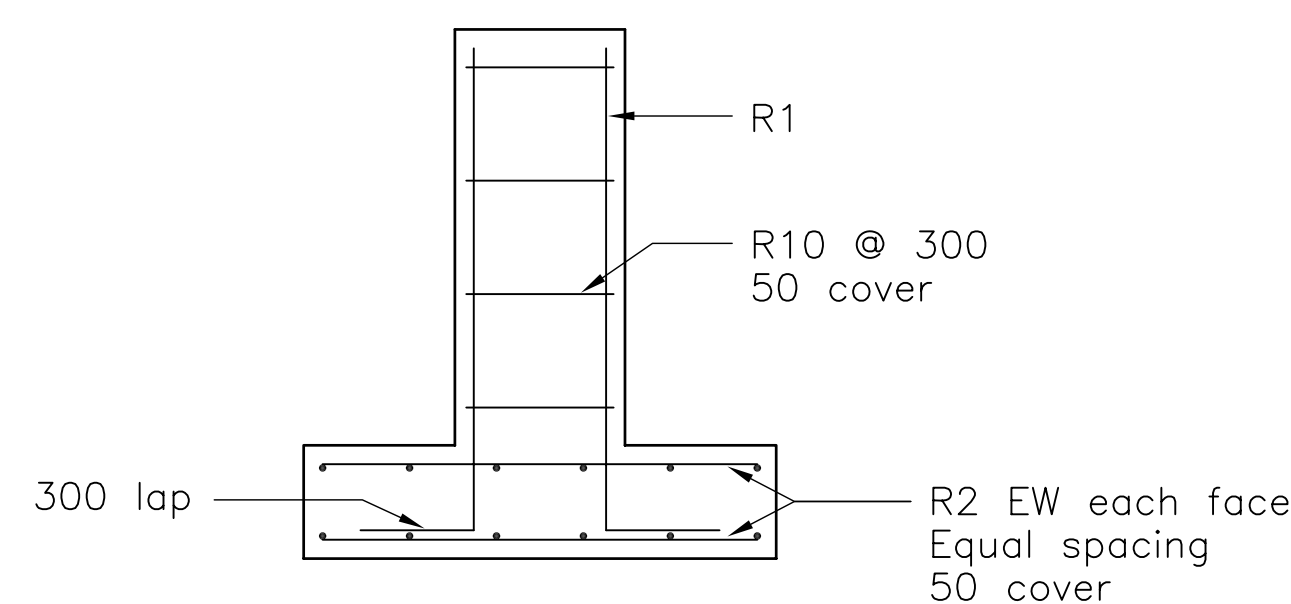
TYPE V2

VENT TOP DETAIL



VENT AT SEWERAGE PUMP STATION

Refer note 9



FOOTING REINFORCEMENT

NOTES

- Vents to be as follows:
Type V1 Where rising mains are 200mm dia or smaller or incoming sewers are 225mm dia or smaller
Type V2 Where rising mains are longer than 200mm dia or incoming sewers are larger than 225mm dia
- Poles to be halvanised steel, 8.5m height and 3mm wall thickness as follows:
Type V1 Baseplate mounted slender pole, FVT85FR-3260 or equal
Type V2 Baseplate mounted sectional pole, FVT85FR-3261 or equal
- uPVC vent pipe and fittings to be SWV type to AS 1415 as follows:
Vent Type V1 - 100mm dia
Vent Type V2 - 150mm dia
- Alarm light only to be fitted to vent poles at pump stations.
- Footing dimension "b" is sized for allowable soil bearing capacity of 100kPa and basic wind speeds of 70m/s in Terrain Category 2. If site bearing capacity is less than 100kPa, dimension "b" is to be determined by the Superintendent.
- All stainless steel items to be Grade 316 or better.
- Concrete footing to be Grade N32.
- Backfill over footing to be compacted in 200mm layers to 95% of MDD (standard) of the material.
- Casting of vent footing and uPVC surround shall be monolithic with pump station slab.

FOOTING DETAILS
(Refer Note 5)

Vent Type	Dimensions (mm)		Holding Down bolt PCD (mm)	Reinforcement	
	a	b		R1	R2
V1	450	1250	350	4/Y16	7/Y16
V2	600	1400	520	4/Y16	8/Y16

This drawing is copyright and the property of the Council of the City of Thuringowa and must not be reproduced wholly or in part without written permission.

NOTES : Not to Scale
Dimensions in millimetres unless noted otherwise
Supersedes TS3A and 10043A

DISCLAIMER. The Council of the City of Thuringowa shall have no liability or responsibility to the user or any other person or entity with respect to any liability, loss or damage caused or alleged to be caused, directly or indirectly, by the adoption and use of these Standard Drawings. Persons must not rely on these Standard Drawings as the equivalent of, or a substitute for, project-specific design and assessment by an appropriately qualified professional.



THE CITY OF THURINGOWA

86 Thuringowa Drive
Thuringowa Central, QLD, 4817
Phone : (07) 4773 8411
Fax : (07) 4773 8571
Email : council@thuringowa.qld.gov.au
Web : www.thuringowa.qld.gov.au

VENTS AT SEWERAGE RISING MAIN RECEIVING INSPECTION CHAMBERS AND PUMP STATIONS

STANDARD DRAWING SEWERAGE

10445

No.	DATE	DESCRIPTION	AP'D
C	24/07/07	ROCKER PIPE AND NOTE 9 ADDED	
B	1/11/05	NOTE 2 AMENDED	
A	1/7/99	ORIGINAL ISSUE	
		REVISIONS	

DRAWN: MAL	Engineer Approved: Original signed by S E Gray Date: 12/12/2005
CHECKED: WJP	Director Approved: Original signed by C Phillips Date: 12/12/2005

A	B	C		
---	---	---	--	--