

2013 Exhibitions

Pinnacles Gallery



A Queensland University of Technology and Pinnacles Gallery co-curated exhibition

THE GAMES OF ART

PINNACLES GALLERY
EXHIBITION DATES:
21 DECEMBER 2013 - 2 FEBRUARY 2014

EXPERIENCE IT Live

QUT creative industries precinct

RYDGES

Pinnacles Gallery
20 Village Blvd, Townsville QLD 4817
☎ (07) 4773 8871
✉ pinnacles@townsville.qld.gov.au
🌐 www.bit.ly/pinntcc

@TCC_Pinnacles
#PinnaclesTCC

Opening Hours
Tuesday – Sunday 10am – 5pm
Monday Closed

Image (top): Tale and Tales *The Graveyard* 2008, Video Game. Image courtesy of the artist.
Images (bottom and background): Mary Flanagan *Layoff* 2009, Video Game.

TOWNSVILLE CITY COUNCIL

Pinnacles Gallery
20 Village Blvd, Townsville QLD 4817
☎ (07) 4773 8871
✉ pinnacles@townsville.qld.gov.au
🌐 www.bit.ly/pinntcc

@TCC_Pinnacles
#PinnaclesTCC
Opening Hours
Tuesday – Sunday 10am – 5pm
Monday Closed

EXPERIENCE IT
Live

TOWNSVILLE RIVERWAY ARTS CENTRE

PINNACLES gallery

PINNACLES GALLERY

TOWNSVILLE IS ~Paradise~

- HERE'S PROOF -

2 FEBRUARY - 17 MARCH 2013



Popular radio personality and Townsville ambassador Steve 'Pricey' Price is kicking off the new Guest Curator Series with his personally curated exhibition showcasing the city

EXPERIENCE IT

Live



Images (Clockwise start on left)

Andrew RANKIN, *Palm Island Boy*, 2002, Digital photograph on rag paper, 43 x 55.5 cm, Gift of Councillor Ray Gartrell 2008, City of Townsville Art Collection

William BUSTARD, *Castle Hill, Townsville*, 1936, Watercolour on paper, 59 x 69 cm, Purchased 1995, City of Townsville Art Collection

Jan HYNES, *It's Come Back Positive: The Annunciation in Townsville*, 2002, Oil on canvas, 120 x 150 cm, Purchased 2002, City of Townsville Art Collection

Sylvia DITCHBURN, *Pandanus & Pelicans, Townsville Common*, 2003, Gouache on Arches paper, 76 x 57 cm, Purchased 2003, City of Townsville Art Collection

Guest Curator Series

DIVERSITY —IN CLAY—

Pinnacles Gallery 22 March – 15 May 2013



TOWNSVILLE CITY COUNCIL

Townsville City Council and the Manager Gallery Services invite you to the launch of

Diversity in Clay

Curated by members of the **North Queensland Potters Assoc. Inc.** as part of Gallery Services' **Guest Curator Series**, the exhibition features ceramics from the **City of Townsville Art Collection**.

Pinnacles Gallery 22 March until 15 May 2013

To be opened by: Roderick Bamford
Senior Lecturer, College of Fine Arts, University of New South Wales
7pm Friday 22 March 2013
RSVP: (07) 4773 8871

Lecture presentation by Roderick Bamford preceeding opening at **6pm Friday 22 March 2013**

Pottery wheel throwing demonstrations and free drop-in clay workshop
1.30pm – 3.30pm Saturday 20 April at the Artist Markets, Riverway Arts Centre



Front left: Andrea HYLAND, *Spiridel 3*, Purchased with the assistance of the VACB of the Australia Council, 1997, City of Townsville Art Collection
Front right: Stephen BOWERS, *T Pot*, 2001, City of Townsville Art Collection
Above: Len COOK, *Muroroa Mutations Series II*, City of Townsville Art Collection

EXPERIENCE IT

Live



Pinnacles Gallery
20 Village Blvd, Townsville QLD 4817
(07) 4773 8871
pinnacles@townsville.qld.gov.au
www.bit.ly/pinntcc

@TCC_Pinnacles
/PinnaclesTCC
Opening Hours
Tuesday – Sunday 10am – 5pm
Monday Closed



Townsville

MUSING WITH MATERIALS

DAVIS THOMAS

PINNACLES GALLERY 25 MAY UNTIL 21 JULY 2013

Merleau-Ponty's theory *Phenomenology of Perception* identifies the body as the primary site of knowing the world and that as such all consciousness is perceptual and subjective. Perception is not the unchanging object as intimated by the natural sciences, but rather an ever fluctuating intertwinement of the consciousness, the world, and the human body; perceiving is an intricately and mutually engaged dance.

Image:
Davis Thomas,
Unravel, 2010,
installation image

EXPERIENCE IT

Live





TOWNSVILLE CITY COUNCIL

Townsville City Council and the Manager Gallery Services invite you to the launch of

北京后繁荣
竞技场 ARENA
A POST ROOM BEIJING

Exhibition dates: 27 July - 1 September 2013

Artists: Brain Failure / Xiao Rong, Allan Chawner, Chen Xuegang, Gao Shiqiang, Guan Shengsheng, Lei Lei, Miao Xiaochun, Nan Hao, Wang Qingsong, Wu Junyoung, Xu Tong, Zhang Xiaotao

To be opened by:

Prof. Peter Murphy
Head of School, JCU SoCA
7pm Saturday 27 July 2013

Immediately followed by a talk by:

Dr Laurens Tan
ARENA: A Post Boom Beijing Curator
7.30pm Saturday 27 July 2013

Pinnacles Gallery
RSVP (07) 4773 8871



Images (Above and Front detail):
Gao Shiqiang
still from *Total Eclipse* 2010
Courtesy the artist and Magee Gallery, Beijing

EXPERIENCE IT
Live



Pinnacles Gallery
20 Village Blvd, Townsville QLD 4817
(07) 4773 8871
pinnacles@townsville.qld.gov.au
www.bit.ly/pinntcc

@TCC_Pinnacles
/PinnaclesTCC
Opening Hours
Tuesday – Sunday 10am – 5pm
Monday Closed



ARTNOW

Pinnacles Gallery

7 September - 29 September 2013

EXPERIENCE IT

Live



Pinnacles Gallery
20 Village Blvd, Townsville QLD 4817
(07) 4773 8871
pinnacles@townsville.qld.gov.au
www.bit.ly/pinntcc

@TCC_Pinnacles
/PinnaclesTCC
Opening Hours
Tuesday - Sunday 10am - 5pm
Monday Closed

TOWNSVILLE CITY COUNCIL

Department of Education, Training and Employment

North Queensland

creative generation
excellence awards in visual art

Regional Exhibition 2013

S&S

Creativity unlimited™

[www.education.qld.gov.au/community/events/
creativegeneration/artawards/visualart/](http://www.education.qld.gov.au/community/events/creativegeneration/artawards/visualart/)



TOWNSVILLE CITY COUNCIL

Townsville City Council and the Manager Gallery Services invite you to the joint launch of

Sense of PLACE

dLUX
MediaArts

Museums
& Galleries
NSW



Trade &
Investment
Arts NSW

Greatest Hits Volume 3

IMA
Institute of
Modern Art

Exhibitions to be opened by
Chris Bennie

Artist & Senior Lecturer, Queensland College of Art
Griffith University

6.30pm Saturday 12 October 2013

Followed by a floor talk by
Anna Zammit

Curator, *GREATEST HITS VOLUME 3*
7pm Saturday 12 October 2013

RSVP: 4773 8871

Pinnacles Gallery

Exhibition dates: 5 October – 10 November 2013

EXPERIENCE IT
Live



Pinnacles Gallery
20 Village Blvd, Townsville QLD 4817
(07) 4773 8871
pinnacles@townsville.qld.gov.au
www.bit.ly/pinntcc

@TCC_Pinnacles
/PinnaclesTCC
Opening Hours
Tuesday – Sunday 10am – 5pm
Monday Closed

Front images [L - R]:
Justin Shoulder *V* 2010, single channel digital video, 7:00.
Video Still: **Amy Gebhardt**. Image courtesy the artist.
Catherine Sagin *Mazda 121 Residency: Prelude* 2010, digital
video. Image courtesy of the artist.



SURVIVOR

DADANG CHRISTANTO

Exhibition Dates:
17 November – 15 December 2013

Images: Dadang Christanto, *Survivor*, 2009, performance at 4A Centre for Contemporary Asian Art, Sydney. Image courtesy of the artist and 4A Centre for Contemporary Asian Art, Sydney. Image credit: Garry Trinh



Australian Government
Visual Arts and Craft Strategy
Contemporary Touring Initiative



Trade & Investment
Arts NSW

EXPERIENCE IT
Live



Pinnacles Gallery
20 Village Blvd, Townsville QLD 4817
& (07) 4773 8871
pinnacles@townsville.qld.gov.au
www.bit.ly/pinntcc

@TCC_Pinnacles
/PinnaclesTCC
Opening Hours
Tuesday – Sunday 10am – 5pm
Monday Closed

Presented by Kultour in partnership with 4A Centre for Contemporary Asian Art and toured by Museums & Galleries NSW. This exhibition is supported by the Contemporary Touring Initiative through Visions of Australia, an Australian Government program, and the Visual Arts and Craft Strategy, an initiative of the Australian Government and state and territory governments.



A Queensland University of Technology and Pinnacles Gallery co-curated exhibition

THE GAMES OF ART



PINNACLES GALLERY
EXHIBITION DATES:

21 DECEMBER 2013 – 2 FEBRUARY 2014

EXPERIENCE IT
Live



QUT creative industries
precinct



Pinnacles Gallery
20 Village Blvd, Townsville QLD 4817
☎ (07) 4773 8871
📧 pinnacles@townsville.qld.gov.au
🌐 www.bit.ly/pinntcc

🐦 @TCC_Pinnacles
📘 /PinnaclesTCC
Opening Hours
Tuesday – Sunday 10am – 5pm
Monday Closed

Image (top): Tale and Tales *The Graveyard* 2008, Video Game. Image courtesy of the artist.

Images (bottom and background): Mary Flanagan *Layoff* 2009, Video Game.

Community Access Spaces



Limitless



Patricia Wills, Cant see the forest for the trees, 2012

Morning inspirations is an eclectic group of amateur artists who meet on Mondays to draw, paint and create. The sharing of knowledge and skills, binds this group together in a comfortable companionship enjoyed by all members

On show at **YOUR
SPACE**

THURINGOWA LIBRARY FOYER
9 January to 5 February 2013
Opening 12 January 2pm

PINNACLES GALLERY
RIVERWAY ARTS CENTRE
20 VILLAGE BLVD
THURINGOWA CENTRAL

TUE TO FRIDAY 9AM - 5PM
SAT AND SUN 10AM - 5PM
MON CLOSED



07 4773 8871

PINNACLES@TOWNSVILLE.QLD.GOV.AU

WWW.TOWNSVILLE.QLD.GOV.AU





Your Space

Value of Life: Tanya Geyser

This exhibition explores the deep pain and heartache that was felt and witnessed during the Rwandan genocide in 1995. Tanya's husband, an Australian soldier, was deployed to Rwanda for six and half months in early 1995 as a peace keeper.

**SHOWING AT YOUR SPACE, THURINGOWA LIBRARY
6 FEBRUARY - 5 MARCH**

Opening Saturday 9 February, 2pm

To be opened by Donna Beningfield

RSVP Pinnacles Gallery:

4773 8871 | pinnacles@townsville.qld.gov.au

EXPERIENCE IT

Live



Your Space,

Thuringowa Library Foyer

Cnr Thuringowa & Hinchinbrook Dr

Townsville, QLD, 4812

Image: Tanya Geyser, *A day in the field*



Townsville

You are invited to the exhibition launch of...

Dark, Desolate, Depraved **Kate and Sarah Jones**

Your Space, Thuringowa Library
2pm Saturday 9 March

Dark, Desolate, Depraved, is the concept of the dark side of the human psyche. From the darkest corners of human perception of Fear, to the desolate desires some of us harbour, to the depravity of human nature in regards to mental illness. The artwork for *Dark, Desolate, Depraved*, reflects early procedures to dealing with mental illness, as well as the perspectives of mentally impaired peoples.

Exhibition dates: 6 March until 2 April 2013

Image: Sarah Jones, *The fogginess of depression*

EXPERIENCE IT

Live



Your Space,
Thuringowa Library Foyer,
Cnr Thuringowa & Hinchbrook Dr,
Townsville, QLD, 4812



You are invited to

catcher
on the
wall

An exhibition of recent collaborative works of mixed media, found materials and sculpture by Gabrielle Bohl and John Bradshaw.

THE GALLERIA, RIVERWAY FOYER 4 MARCH UNTIL 31 MARCH 2013

20 Village Blvd, Townsville QLD 4817
☎ (07) 4773 8871
✉ pinnacles@townsville.qld.gov.au
🌐 www.bit.ly/pinntcc

Image: By Gabrielle Bohl and John Bradshaw

EXPERIENCE IT

Live



🐦 @TCC_Pinnacles
+ /PinnaclesTCC
Opening Hours
Tuesday – Sunday 10am – 5pm
Monday Closed



You are invited to

ANDREW RANKIN

Body of work by Andrew Rankin using mobile phone photography focusing on urban images of Townsville.

Exhibition launch
11am Sunday 7 April 2013
RSVP: (07) 4773 8871

THE GALLERIA, RIVERWAY FOYER
1 APRIL UNTIL 28 APRIL 2013

MOBILE PHONE PHOTOGRAPHY WITH ANDREW RANKIN

Join local photographer Andrew Rankin to explore the world of iPhone photography. This workshop will include demonstrations of techniques, smart phone apps, and a 'photo walk' on location at Riverway Arts Centre.

Age: 15+
Cost: FREE
Time: 1pm - 5pm
Date: 10 April - 12 April 2013
Requirements: Preferably iPhone, participants can use android phones.



Front: Andrew Rankin, Townscape
 Above: Andrew Rankin, Old Hospital

EXPERIENCE IT

Live



The Galleria, Riverway Foyer
 20 Village Blvd, Townsville QLD 4817
 (07) 4773 8871
 pinnacles@townsville.qld.gov.au
www.bit.ly/pinntcc

@TCC_Pinnacles
 /PinnaclesTCC
 Opening Hours
 Tuesday – Sunday 10am – 5pm
 Monday Closed



You are invited to the exhibition launch of...

Moment in Time

**Donna Beningfield, Margaret Crawford,
Ros Jones, Marjory Cook and Raya Keskela**

Your Space, Thuringowa Library
10.30am Sunday 7 April

Donna Beningfield, Margaret Crawford, Ros Jones, Marjory Cook and Raya Keskela reflect on the idea of time. There is always something that proceeds and something that follows. Nothing exists in isolation. At any given moment in time, there must be a connection to the moment before and the moment that will inevitably come after.

Exhibition dates: 3 April - 30 April 2013

Front Image: Donna Beningfield, *Moment in Time 3* [detail], 2012, Mixed Media
Image: Donna Beningfield, *Moment in Time 1* [detail], 2012, Mixed Media

EXPERIENCE IT
Live



Your Space,
Thuringowa Library Foyer
Cnr Thuringowa & Hinchbrook Dr,
Townsville, QLD, 4812

TOWNSVILLE CITY COUNCIL



You are invited to

COLOURPLAY

TWELVE BY TWELVE: THE INTERNATIONAL ART QUILT CHALLENGE

Following on from the popular international exhibition and inspirational book featuring the first Theme series, the Twelve by Twelve International Art Quilt Challenge seeks to share their new *Colourplay* series through an exhibition at The Galleria.

The Twelve by Twelve group is composed of twelve art quilters from around the world (Australia, Belgium, England and America) each with numerous awards, articles and publications among them. The Twelves are a special group because they are so diverse artistically, geographically, politically and chronologically.

Exhibition launch

11am Saturday 4 May 2013

THE GALLERIA, RIVERWAY FOYER

29 APRIL UNTIL 2 JUNE 2013



Front and back images:
Art quilts by Deborah Boschert, Gerrie Congdon, Helen Conway, Kirsten Duncan, Terry Grant, Diane Perin Hock, Françoise Jamart, Kristin La Flamme, Karen Rips, Brenda Gael Smith, Terri Stegmiller and Nikki Wheeler, each 12 x 12 cm



Townsville



EXPERIENCE IT

Live



TWELVE BY TWELVE

The International Art Quilt Challenge

www.twelveby12.org

The Galleria, Riverway Arts Centre Foyer
20 Village Blvd, Townsville QLD 4817
(07) 4773 8871
pinnacles@townsville.qld.gov.au
www.bit.ly/pinntcc

@TCC_Pinnacles

/PinnaclesTCC

Opening Hours

Tuesday – Sunday 10am – 5pm

Monday Closed



You are invited to the launch of

Heritage Matters - Chronicles of Queensland: B.Saxton-Horsley

Esteemed local artist Barbara Saxton-Horsley has for decades evoked the life and past of historical buildings and scenes throughout Queensland, honing her incredibly detailed and intricate art style.

During her career she has won several major awards and has been involved in many solo and collaborative exhibitions throughout Australia and Japan. This display of approximately 70 art works will feature her trademark architectural and flora works as well as landscape pieces.

Exhibition to be opened by guest speaker Mario Torrisi:

11am Saturday 10 August 2013

**SHOWING AT THE GALLERIA, RIVERWAY ARTS CENTRE
6 AUGUST - 1 SEPTEMBER 2013**

Image above: B. Saxton-Horsley, *Club Hotel Ravenshoe*

Image back: B. Saxton-Horsley, *Drynie House Brandon*

EXPERIENCE IT

Live



Pinnacles Gallery, Riverway
20 Village Blvd, Townsville QLD
(07) 4773 8871
pinnacles@townsville.qld.gov.au
www.bit.ly/pinntcc

@TCC_Pinnacles
/PinnaclesTCC
Opening Hours
Tuesday - Sunday:
10am - 5pm
Monday Closed

TOWNSVILLE CITY COUNCIL



Townsville



Thuringowa Art Society and the Manager Gallery Services
invite you to the launch of:

A selection of Thuringowa Art Society member's works 2013

ThAS was founded by Janice Crocker and incorporated in November 1999, and enjoys holding exhibitions, workshops, social BBQ's and an annual bus trip outside of the region.

The Society is a not for profit organisation and no commission is deducted from member's sales at these exhibitions. Some members paint in a group to give them inspiration, encouragement and socialisation over a cup of tea or coffee.

Exhibition to be opened by:

Sam Cox MP, Member for Thuringowa
2pm Saturday 7 September 2013

SHOWING IN YOUR SPACE,
LIBRARY FOYER AT THE THURINGOWA CIVIC CENTRE
4 SEPTEMBER – 1 OCTOBER 2013

Image Above: Janice Crocker, *Country life* 2013

Image Reverse: Patricia Kirkwood, *Jelly Fish* 2013

EXPERIENCE IT

Live



Your Space,
86 Thuringowa Drv
Thuringowa Central QLD 4817
(07) 4773 8871
pinnacles@townsville.qld.gov.au
www.bit.ly/pinntcc

@TCC_Pinnacles
PinnaclesTCC
Opening Hours
Monday, Friday: 9am - 5pm
Tuesday - Thursday: 9am - 6pm
Saturday: 9am - 3pm
Sunday: 9am - 1pm

TOWNSVILLE CITY COUNCIL



TOWNSVILLE CITY COUNCIL

Townsville City Council and the Manager Gallery Services invite you to the launch of

Embracing Eighty

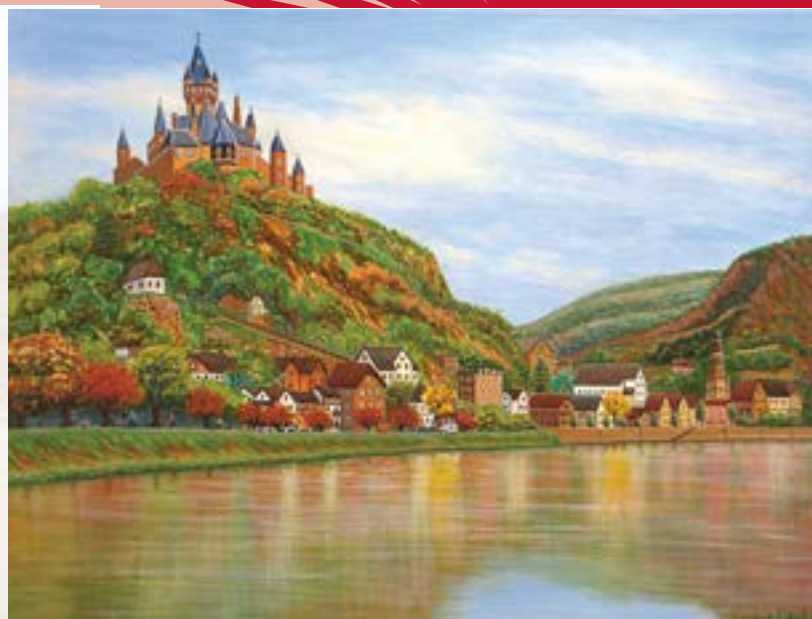
Townsville artist Ailsa Reid will host a solo exhibition to mark her 80th birthday. In **Embracing Eighty**, Reid exhibits a series of painted landscapes from her memorable trip down the Rhine River. The artist was particularly enthralled by the medieval buildings and the castles on top of the highest peaks overlooking the Rhine River which feature in some of her works.

About her art practice she states:

"I like to diversify my subject matter, my favourites being: water and sunsets. I also like the challenge of portraiture, creating the perfect likeness of a person. I feel blessed at eighty years of age to have good health and enjoy a full life; I lost my husband 5 years ago. He always encouraged me with my passion for painting and I am pleased that I still have the desire and ability to keep it up, including looking after the Thuringowa Art Society."

To be opened by **Councillor Ray Gartrell, 2pm Saturday 5 October 2013**

**SHOWING IN YOUR SPACE, LIBRARY FOYER AT THE THURINGOWA CIVIC CENTRE
2 OCTOBER - 29 OCTOBER 2013**



EXPERIENCE IT

Live



Your Space

86 Thuringowa Drv
Thuringowa Central QLD 4817
(07) 4773 8871
pinnacles@townsville.qld.gov.au
www.bit.ly/pinntcc

@TCC_Pinnacles

PinnaclesTCC

Opening Hours

Monday and Friday: 9am - 5pm

Tuesday - Thursday: 9am - 6pm

Saturday: 9am - 3pm

Sunday: 9am - 1pm

Image Above: Ailsa Reid *Living in a fairytale world* 2013

Image Reverse: Ailsa Reid *Pelican sunset* [detail], 2012



Kirwan State High School and the Manager Gallery Services
invite you to the launch of

**Arts Centre of Excellence Exhibition
Kirwan State High School**

The **Arts Centre of Excellence Exhibition, Kirwan State High School** is an annual exhibition of the creative talent from the school. This exhibition is a celebration of visual arts, design and cultural arts and encompasses creative arts across the entire student cohort, from Year 8 through to Year 12.

To be opened by:

Rhonda Payne

Artist and Resident Artist at Kirwan High School

With live music by Kirwan State High School

6:30pm Friday 25 October 2013

Showing in The Galleria, Riverway Arts Centre

22 October – 17 November 2013



Image Reverse: Sally Althaus *Big Kangaroo* (detail) 2013

EXPERIENCE IT

Live



Perc Tucker Regional Gallery
Cnr. Denham & Flinders St
Townsville QLD 4810
(07) 4727 9011
ptrg@townsville.qld.gov.au
www.bit.ly/ptrgtcc

@TCC_Perc Tucker
PercTuckerTCC
Opening Hours
Monday - Friday
10am - 5pm
Saturday - Sunday
10am - 2pm

TOWNSVILLE CITY COUNCIL



TOWNSVILLE CITY COUNCIL

Townsville City Council and the Manager Gallery Services invite you to the launch of

ECLECTICISM

ECLECTICISM is the first exhibition for **The Eclectic Artist Group of Townsville**, designed to convey to the Townsville and broader community our diversity. The group is enthusiastic to continue expanding their knowledge and skills in their chosen media and hope that this is conveyed in the variety of subject matter and standards of work featured.

The Eclectic Artists Group found its beginnings as a collective of ladies who attended watercolour lessons hosted by Sally Grattidge, under the **Townsville Art Society** and learning space at Kings Road, Pimlico. Over a few months the members of the group shared their interests and previous experiences in varied art media.

To be opened by **Sally Grattidge**, 10.30am Sunday 3 November 2013

SHOWING IN YOUR SPACE, LIBRARY FOYER AT THE THURINGOWA CIVIC CENTRE

Exhibition Dates: 31 October - 26 November 2013



EXPERIENCE IT

Live



Your Space
Library Foyer
86 Thuringowa Drv,
Thuringowa Civic Centre

(07) 4773 8871
pinnacles@townsville.qld.gov.au
www.bit.ly/pinntcc
@TCC_Pinnacles
/PinnaclesTCC

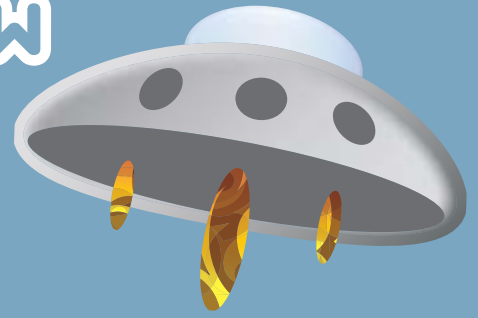
Library Opening Hours
Mon, Friday: 9am-5pm
Tues-Thursday: 9am-6pm
Saturday: 9am-3pm
Sunday: 9am-1pm

Image above: Carol Gollner
Ok, where's the pond? 2012
Image over: Debbie Belcastro
From the Forts [detail] 2013

SPECIAL PLACE TO SHOW A FRIEND FROM SPACE

Art-In-A-Suitcase with Alison McDonald

Exhibition dates: 19 November –15 December 2013

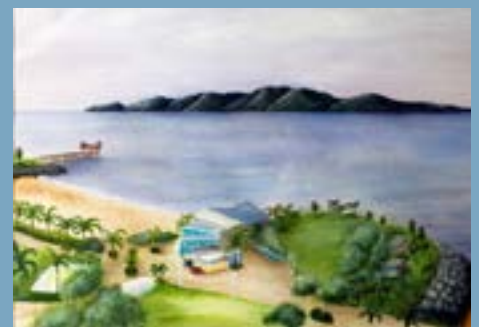


Art-In-A-Suitcase is a major program forming part of Gallery Services' **Creative Classrooms** suite of activities. To deliver **Art-In-A-Suitcase**, an artist is invited by Gallery Services to select individual works or those related to a particular theme from the **City of Townsville Art Collection** to create a program which is then taken to participating primary schools in the Townsville region.

Throughout Term 3 and 4 of 2013, local artist **Alison McDonald** delivered a series of workshops to primary school students in the Townsville region.

McDonald developed a program that challenged students to imagine that a friend was coming from outer space and they only had time to take them to visit one special place. Students were then encouraged to draw this place.

To scaffold the activity, students were shown selected works from the **City of Townsville Art Collection** in which artists explored some of the special places around Townsville and the things that might be in those places. These artworks were housed to museum and gallery standards within a suitcase and taken into the classroom to show students. The artworks were:



Images from left to right: **Juli Haas** *Sloth* 1995-99, Hand-coloured drypoint on printmaking paper, Gift of Tate Adams, Lyre Bird Press 2002; **Adrienne Smith** *Quantum leap* 1991, Mixed media construction, Gift of the artist, 1992; **David H. Stacey** *Ring-tailed gecko* 1984, Pen and ink on paper, Purchased 1985; **Susan Bell** *The Strand* 2007, Watercolour on paper, Highly Commended Section 8 Watercolour- The Townsville Art Society Incorporation 52nd Art Awards 2007.



TOWNSVILLE CITY COUNCIL

Townsville City Council and the Manager Gallery Services invite you to

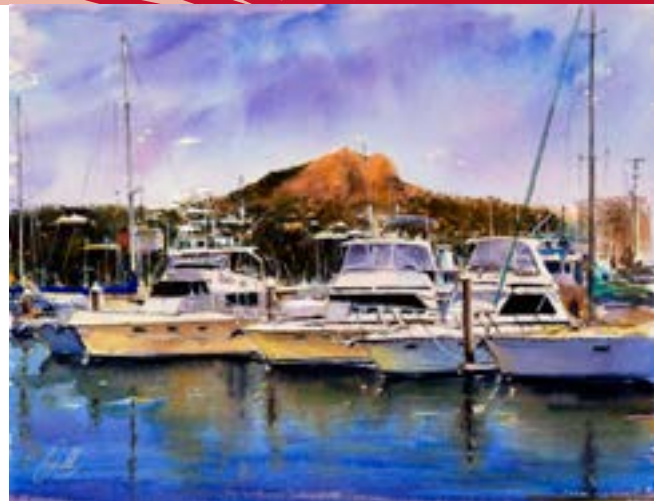
A Brush with Townsville

An exhibition by members of the Kelso Art Group

A Brush with Townsville showcases the aesthetic highlights of our wonderful Tropical North Queensland environment, reflecting on the artistic potential of Townsville and its surrounding areas. The Kelso Art Group has captured the essence of our iconic views including Cape Cleveland and of course our pristine beach front, The Strand. The group promises in this exhibition 'a little bit of everything'.

To be opened by:
Councillor Ray Gartrell
2pm 7 December 2013

SHOWING IN YOUR SPACE, LIBRARY FOYER AT THE THURINGOWA CIVIC CENTRE
Exhibition Dates: 29 November – 8 January 2013



EXPERIENCE IT

Live



Your Space
Library Foyer
86 Thuringowa Drv,
Thuringowa Civic Centre

(07) 4773 8871
pinnacles@townsville.qld.gov.au
www.bit.ly/pinntcc
@TCC_Pinnacles
/PinnaclesTCC

Library Opening Hours
Mon, Friday: 9am-5pm
Tues-Thursday: 9am-6pm
Saturday: 9am-3pm
Sunday: 9am-1pm

Image above:
Eddie OMELANIUK *Untitled* 2013
Image over:
Lynn MOTT *Alligator Creek* 2013