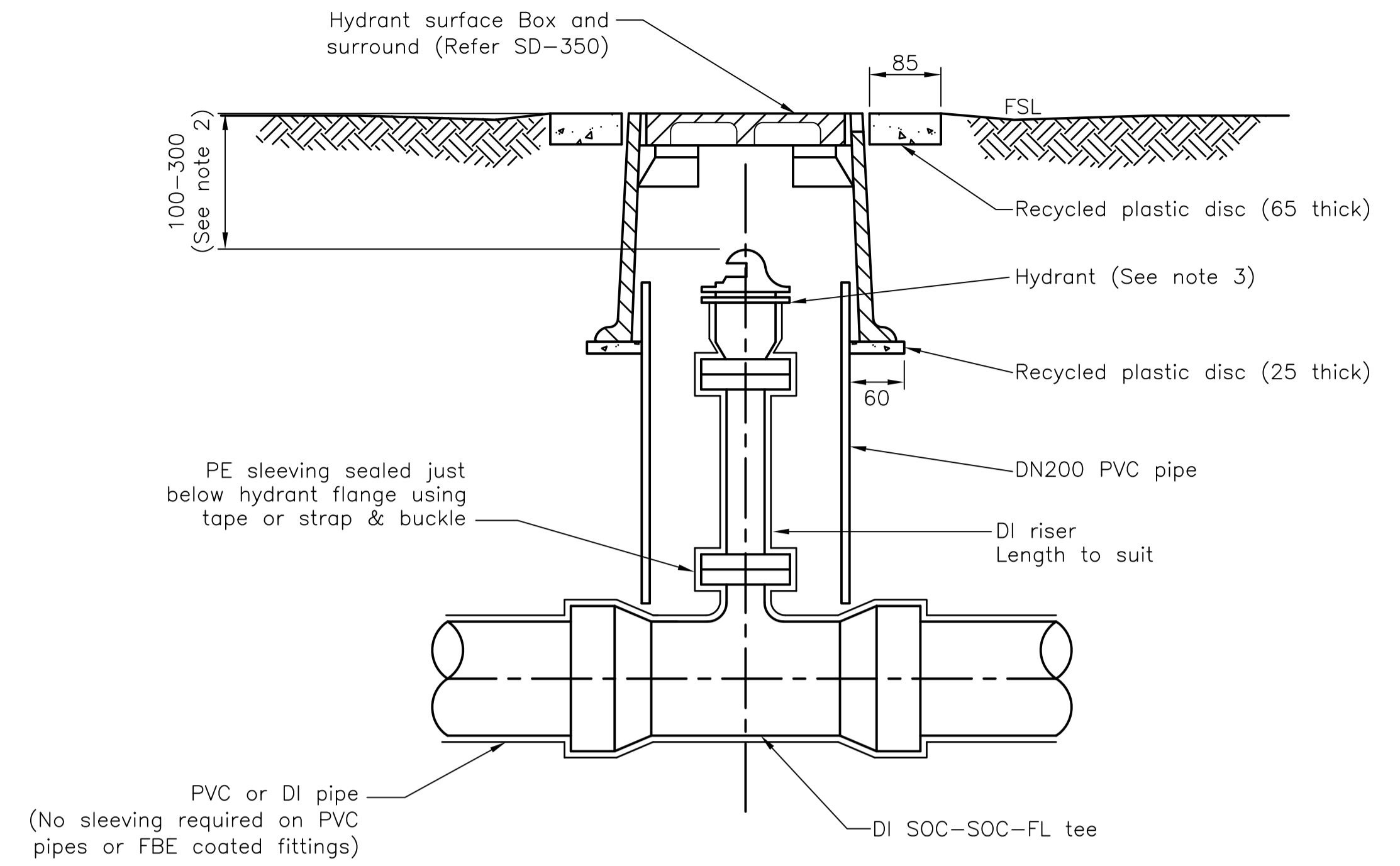
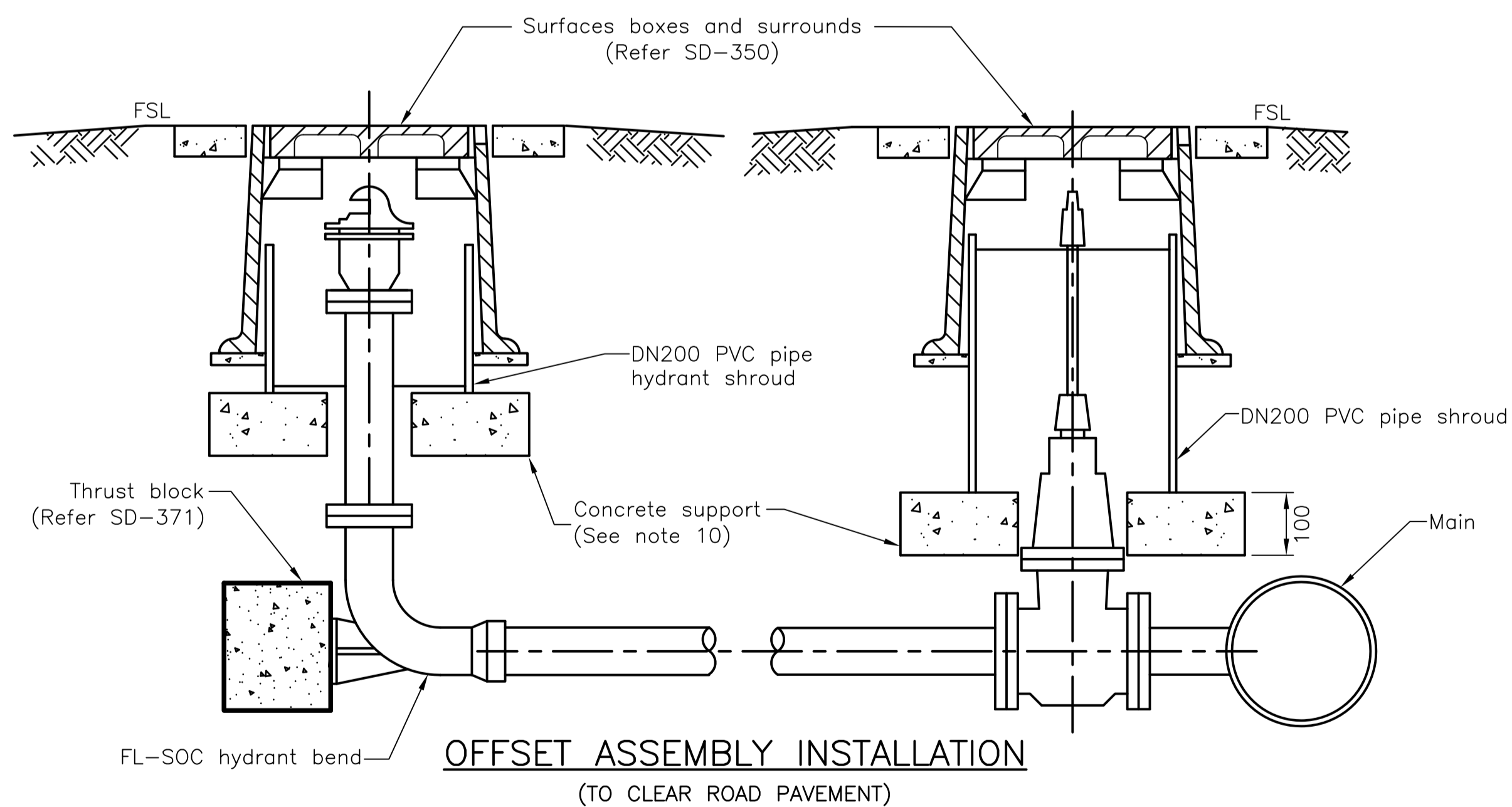


**AIR RELIEF VALVE**

(TOWNSVILLE WATER APPROVAL REQUIRED FOR USE)

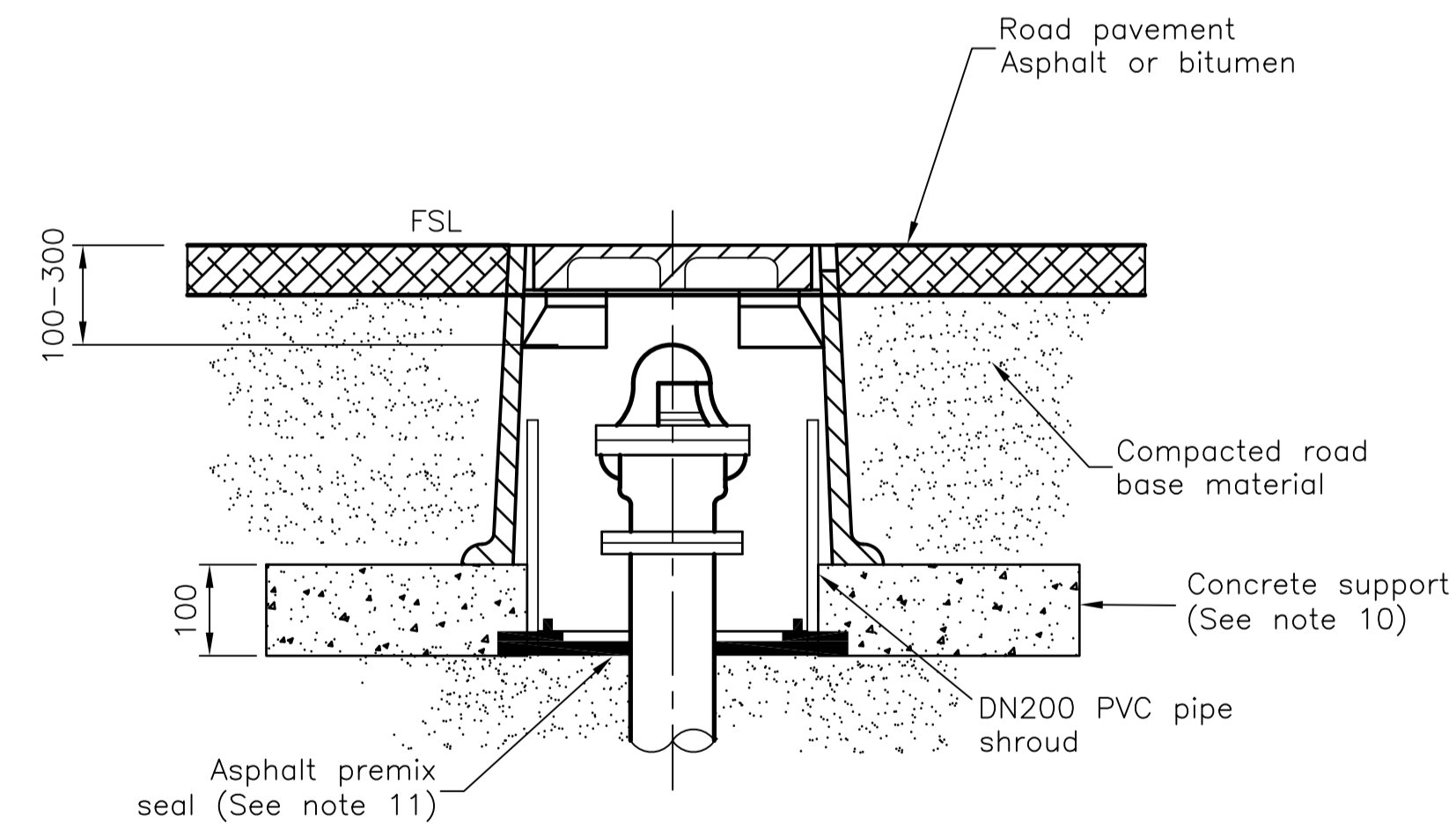


**TYPICAL HYDRANT ARRANGEMENT**



**ALTERNATIVE HYDRANT ARRANGEMENT**

(TOWNSVILLE WATER APPROVAL REQUIRED FOR USE)



**TRAFFICABLE INSTALLATION**

**NOTES**

1. All dimensions are in millimetres unless noted otherwise.
2. Depth of main may be locally increased to achieve specified cover.
3. Hydrant to be DN80 unless otherwise specified.
4. Air valves to be single or double orifice as detailed in design drawings. Valve to be DN80 unless specified otherwise.
5. Isolating stop valve to be authorised valve, eg. butterfly, gate, ball hydrant control valve etc. Isolating valve to be installed such that the air valve can be removed with the valve in place.
6. To prevent corrosion, where possible all valves and fittings to be fusion bonded coated and joined using 316 stainless steel fasteners. Corrosive protective sleeving or wrap not required where this system is used.
7. Provide ventilation to air valve chamber.
8. Direction and grade of drainage pipe to suit the position of the stormwater drain.
9. Flanged branch diameter to be as shown in design drawings.
10. Concrete support slab designed to span the trench to extend at least 300 mm onto supportive earth.
11. Place 20 thick asphalt pre-mix to seal between the riser & shroud.
12. Shroud to extend 50 mm below hydrant flange.
13. All surface box covers and frames to be in accordance with AS3996  
Class D loading - Trafficable  
Class B loading - Non trafficable
14. Cover, frame, shroud & shroud support to be installed so that no loading is transmitted to the valve or pipe.
15. For non trafficable applications elevate cover up to 75 above finished surface level and grade soil away to prevent water entry.
16. Townsville Water written approval required to use alternative hydrant arrangement.
17. Use of compressed recycled plastic valve and hydrant surround allowed subject to Townsville Water product approval.

NOTES : BASED ON FORMER WSA A DRAWING  
WAT-1302, 1305 & 1306

Full Size A1

DRAWN: DESIGN OFFICE

CHECKED: D Moseley

Design Engineer Approved: P Turl

Date: 24-07-2012

Manager Approved: M Harvey

Date: 24-07-2012



Ph: (07) 4727 9000  
www.townsville.qld.gov.au

**TYPICAL VALVE & HYDRANT INSTALLATION  
HYDRANTS AND AIR RELIEF VALVES**

**STANDARD  
DRAWING**

**WATER**

**SD-355**

**B**

No.	DATE	DESCRIPTION	AP'D
B		NOTES AND REFERENCES AMENDED	
A		ORIGINAL ISSUE	
REVISIONS			