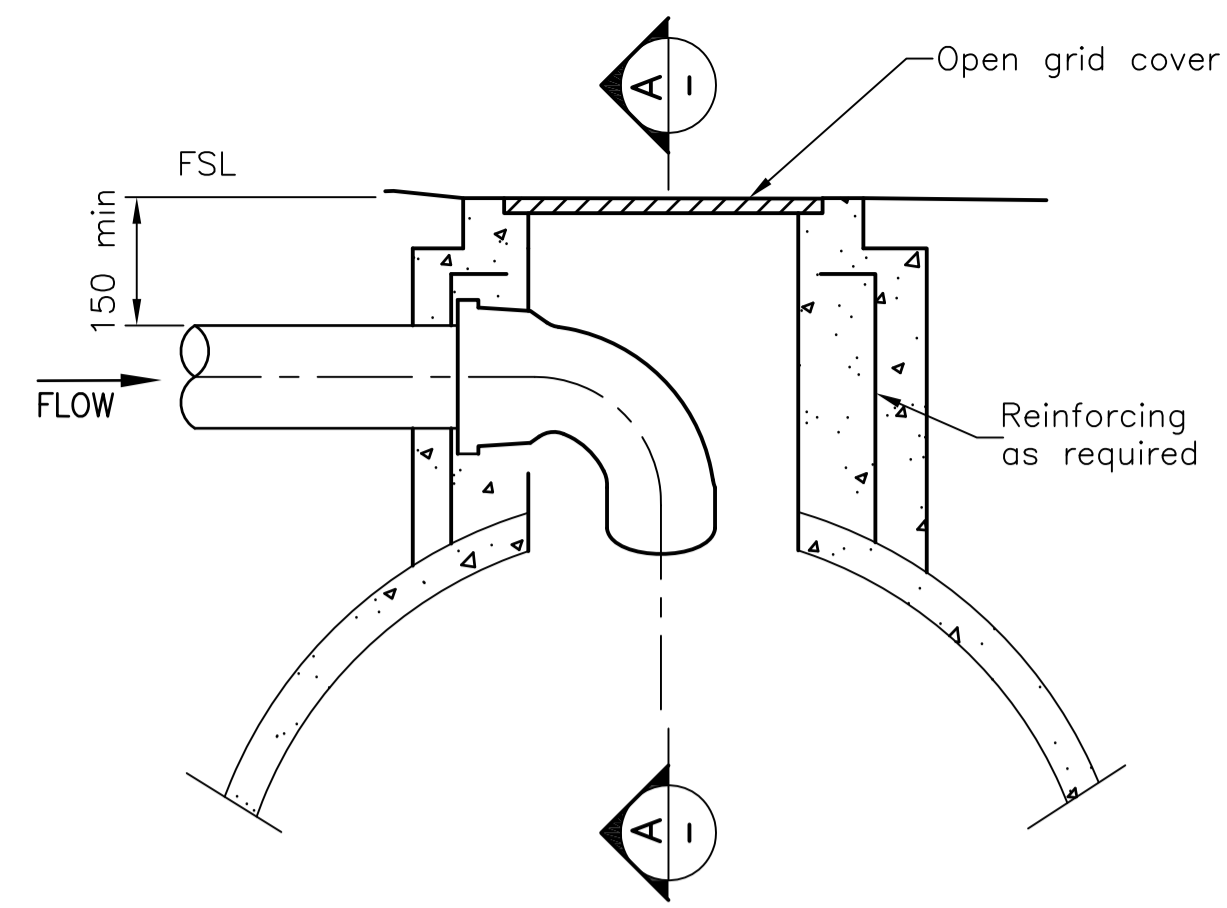
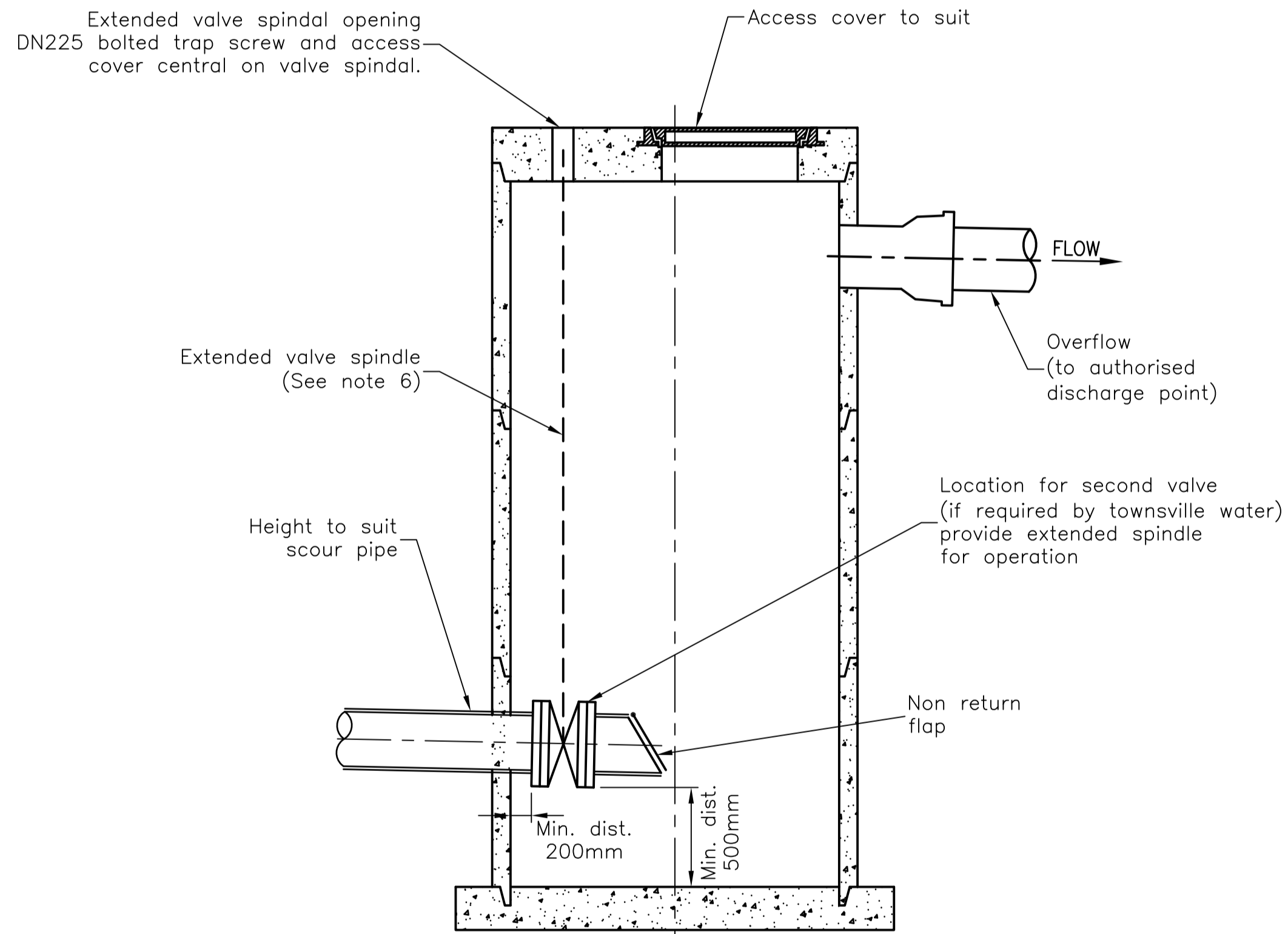
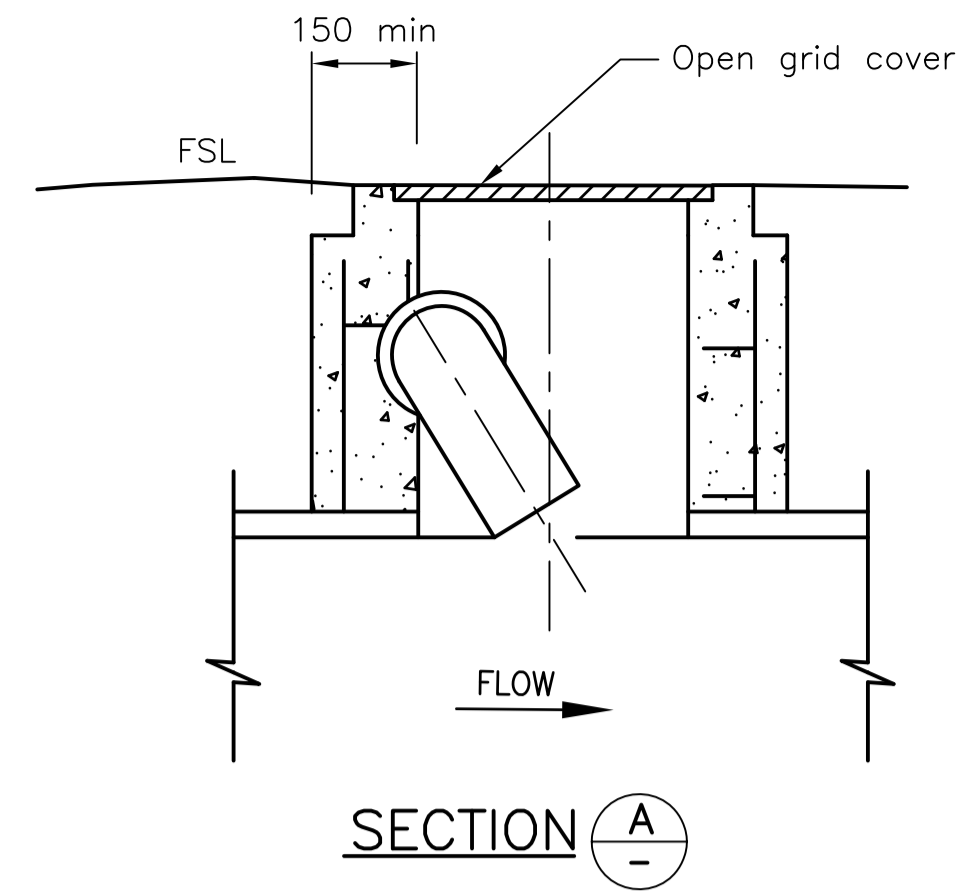


SCOUR CONNECTION DETAIL



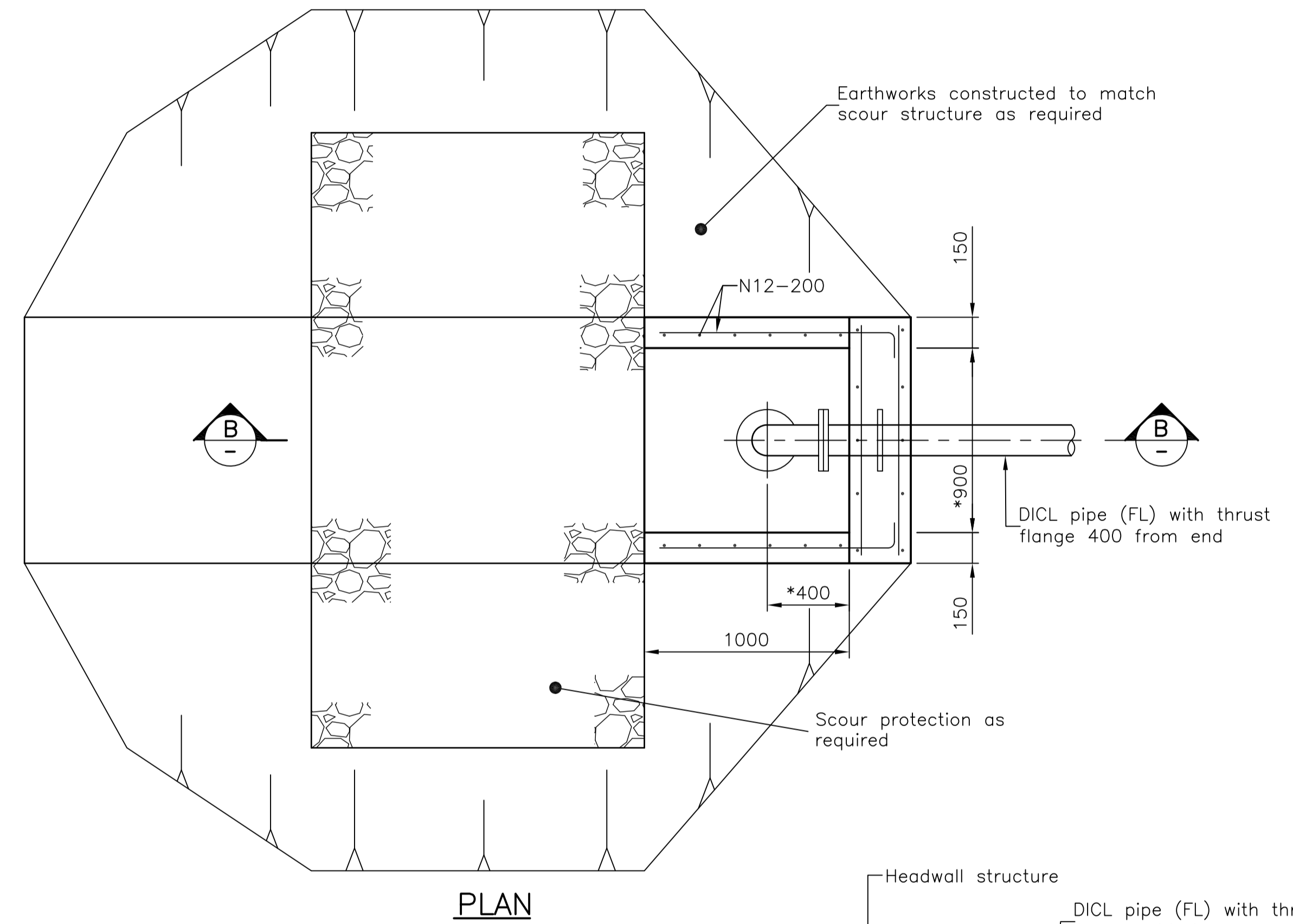
SCOUR DISCHARGE TO APPROVED DRAINAGE SYSTEM



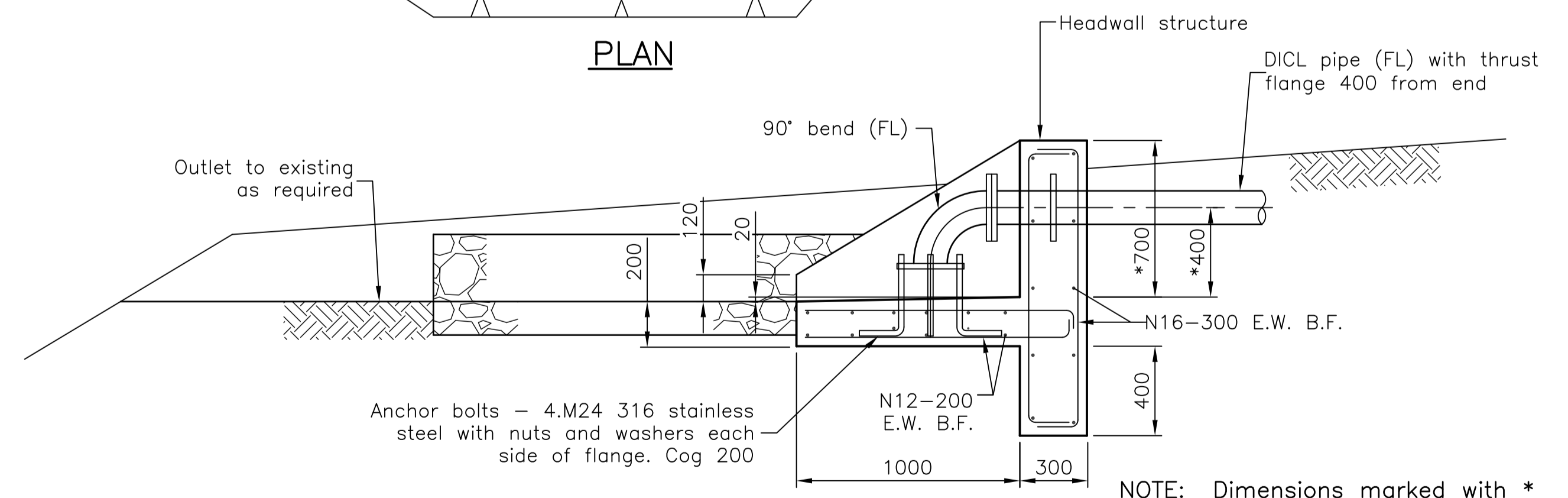
SCOUR DISCHARGE COLLECTION/PUMP-OUT SUMP

NOTES

1. All dimensions in millimetres.
2. Scour valve and pipework to match required discharge rate.
3. Obtain council approval for sump &/or discharge point prior to construction of scour.
4. Unreinforced concrete to be N20 and reinforced concrete N25.
5. Provide corrosion protection for pipework and fittings.
6. Extended valve spindle to be provided as required. Use bolted trap screw for valve spindle cover in MH lid.



PLAN



SECTION B-B

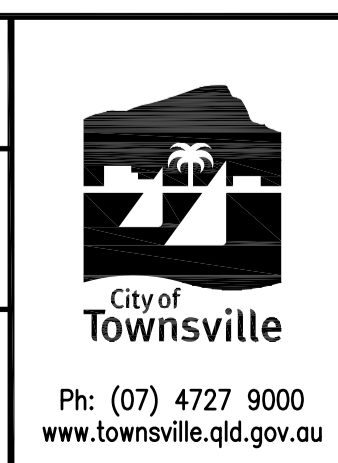
SCOUR DISCHARGE TO OPEN DRAINAGE SYSTEM

No.	DATE	DESCRIPTION	AP'D
B		NOTES AND DETAILS AMENDED	
A		ORIGINAL ISSUE	
REVISIONS			

NOTES : BASED ON WSAA DRAWING WAT-1307

Full Size A1
Not to Scale

DRAWN: DESIGN OFFICE
CHECKED: D Moseley
Design Engineer Approved: P Turl
Date: 24-07-2012
Manager Approved: M Harvey
Date: 24-07-2012



TYPICAL APPURTENANCE INSTALLATION
SCOUR ARRANGEMENTS

STANDARD DRAWING
WATER
SD-360 B