

Based on or contains data provided by the State of Queensland (Department of Environment and Resource Management) [2012]. In consideration of the State permitting use of this data you acknowledge and agree that the State gives no warranty in relation to the data (including accuracy, reliability, completeness, currency or suitability) and accepts no liability (including without limitation, liability in negligence) for any loss, damage or costs (including consequential damage) relating to any use of the data. Data must not be used for direct marketing or be used in breach of the privacy laws.

© The State of Queensland 2012

1:20,000 @ A3

0 250 500 750

Metres

Map Projection: Transverse Mercator
Horizontal Datum: GDA 1994
Grid: GDA 1994 MGA Zone 55

N

LEGEND

- Town / Locality
- Road
- Railway
- Urban Locality
- Properties Boundary
- HAT 2100 Condition (0.8m SLR)

Risk to Property

- Acceptable Risk
- Tolerable Risk
- Unacceptable Risk

Queensland Government

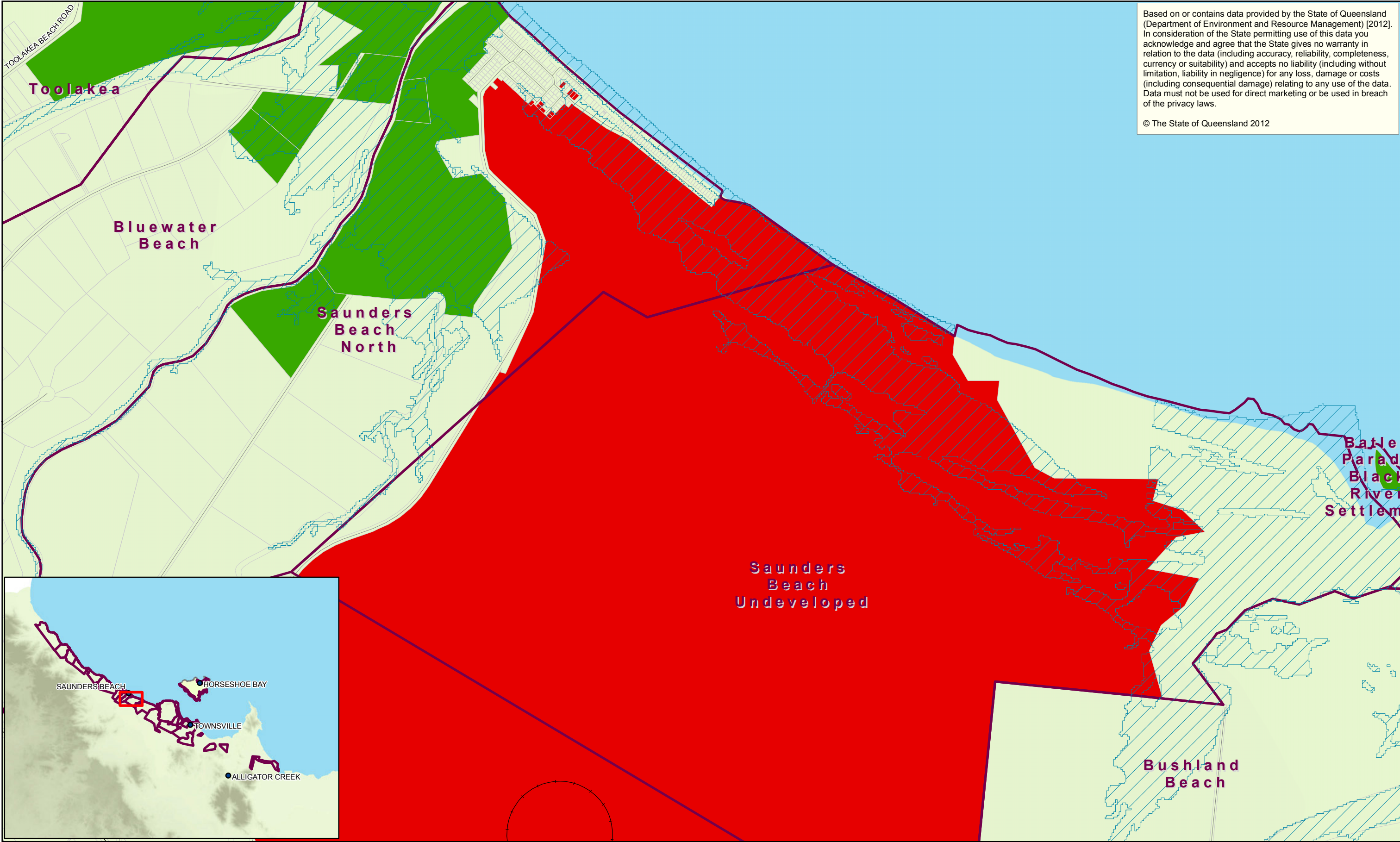
GHD

City of Townsville

Townsville City Council
Coastal Hazard Adaptation Strategy
Tidal Influence -
2100 Conditions (0.8m SLR)
Risk To Property
District: Saunders Beach

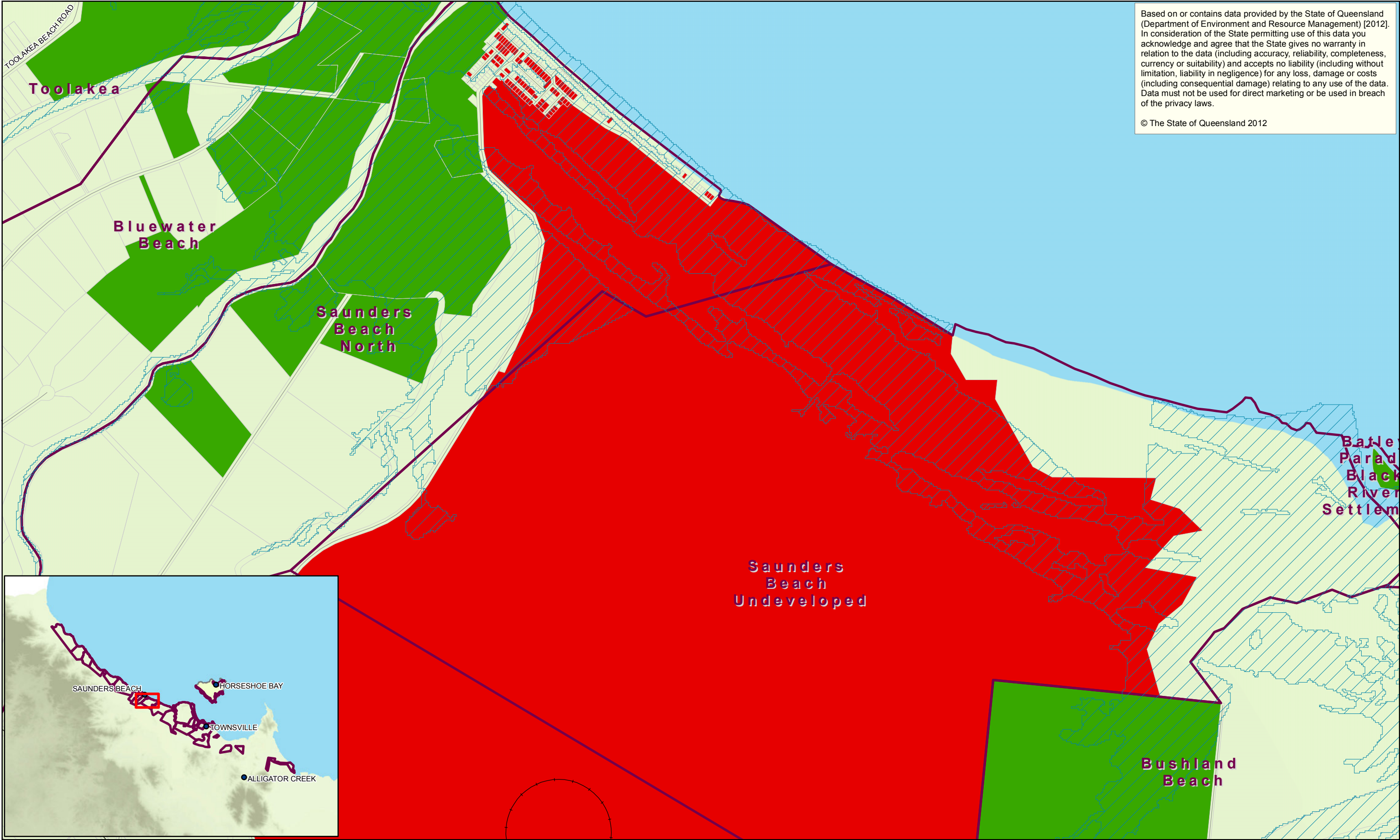
Job Number 41-24609
Revision A
Date 12 Oct 2012

Map Series A2
Sheet 4 of 11



Based on or contains data provided by the State of Queensland (Department of Environment and Resource Management) [2012]. In consideration of the State permitting use of this data you acknowledge and agree that the State gives no warranty in relation to the data (including accuracy, reliability, completeness, currency or suitability) and accepts no liability (including without limitation, liability in negligence) for any loss, damage or costs (including consequential damage) relating to any use of the data. Data must not be used for direct marketing or be used in breach of the privacy laws.

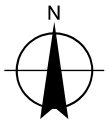
© The State of Queensland 2012



Based on or contains data provided by the State of Queensland (Department of Environment and Resource Management) [2012]. In consideration of the State permitting use of this data you acknowledge and agree that the State gives no warranty in relation to the data (including accuracy, reliability, completeness, currency or suitability) and accepts no liability (including without limitation, liability in negligence) for any loss, damage or costs (including consequential damage) relating to any use of the data. Data must not be used for direct marketing or be used in breach of the privacy laws.

© The State of Queensland 2012

1:20,000 @ A3
0 250 500 750
Metres
Map Projection: Transverse Mercator
Horizontal Datum: GDA 1994
Grid: GDA 1994 MGA Zone 55



LEGEND

- Town / Locality
- Road
- Railway
- District Boundary
- Properties Boundary
- 100 y Return Period Storm Tide Event 2100 Conditions (0.8m SLR)

Risk to Property

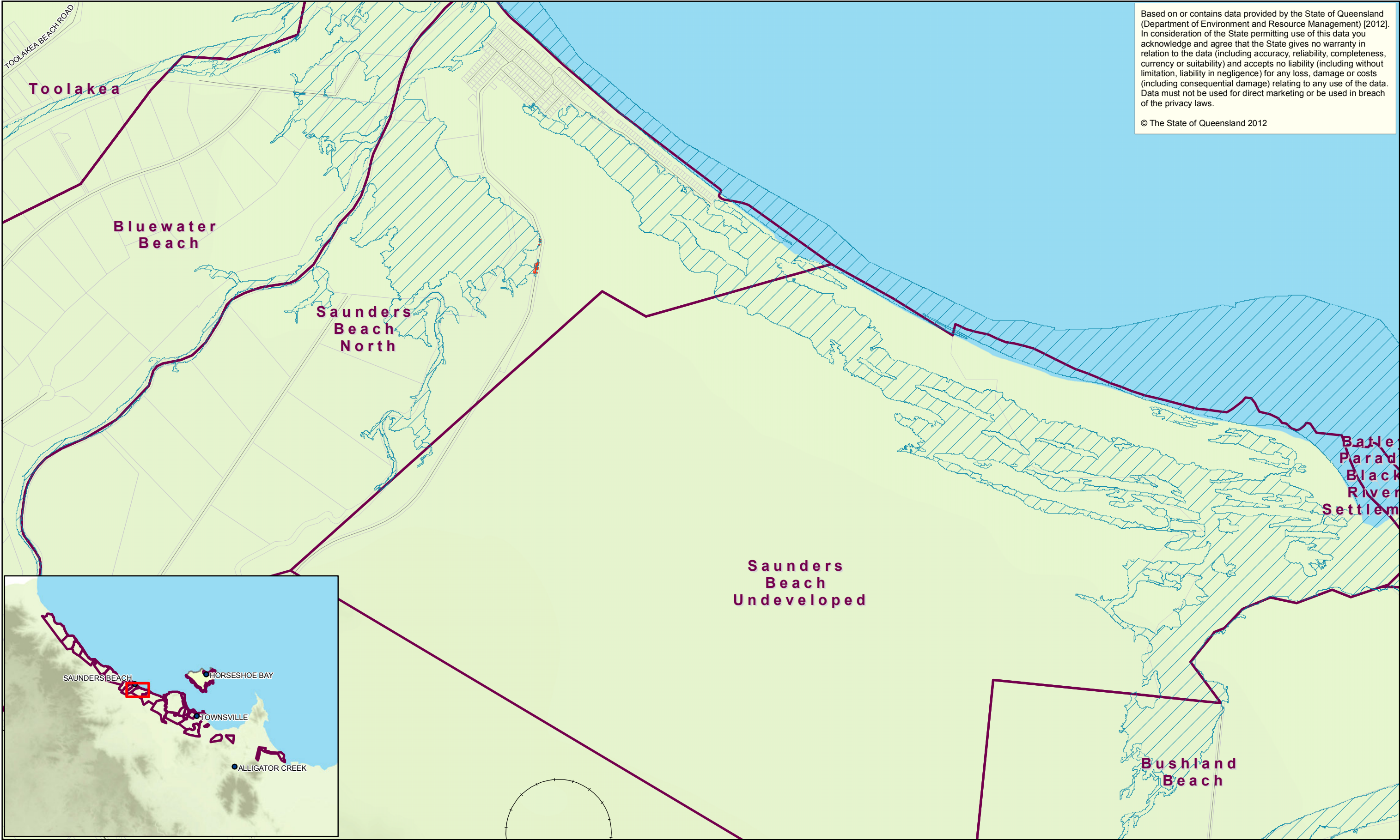
- Acceptable Risk
- Unacceptable Risk



Townsville City Council
Coastal Hazard Adaptation Strategy
Storm Tide -
2100 Conditions (0.8m SLR)
Risk To Property
District: Saunders Beach

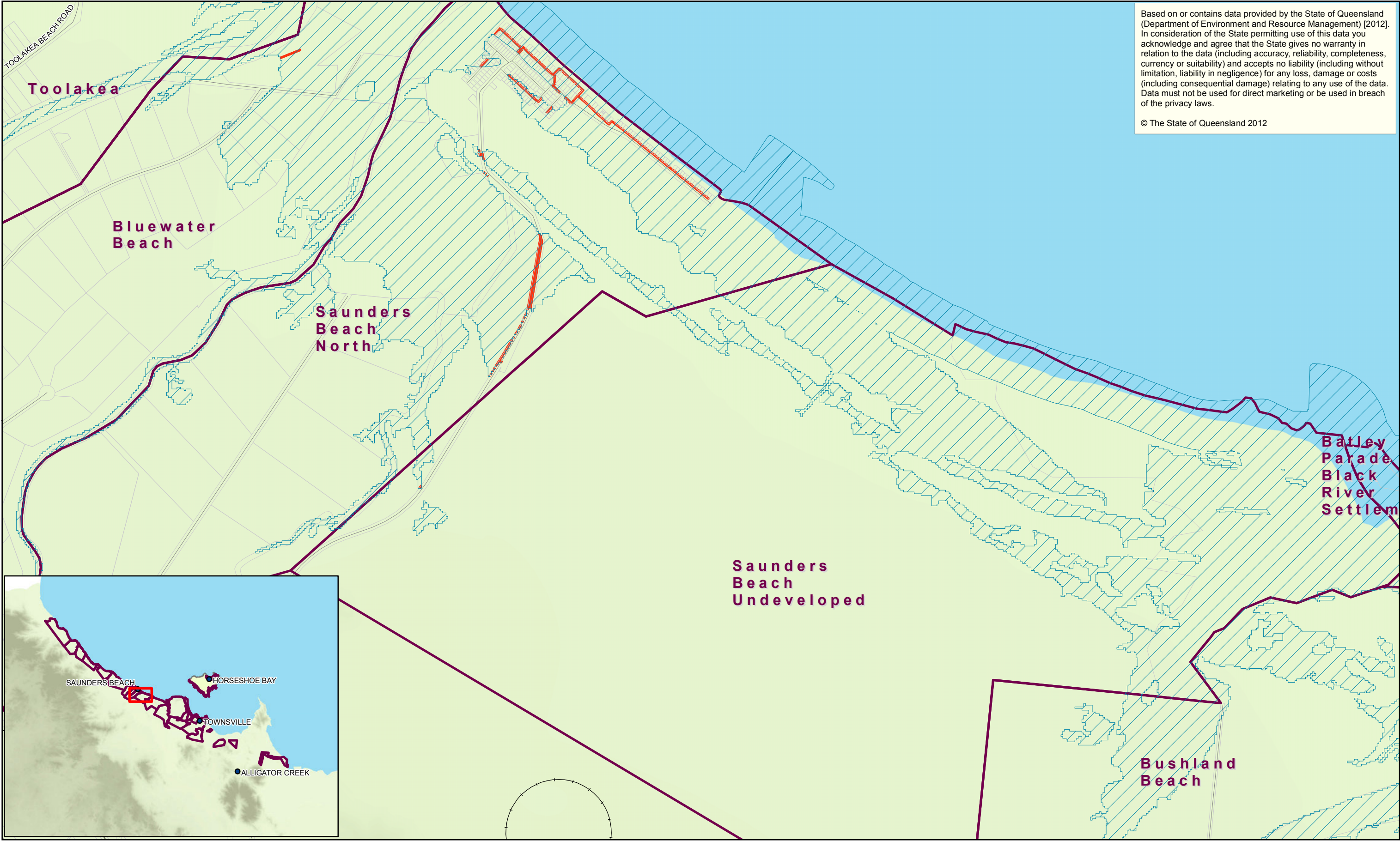
Job Number 41-24609
Revision A
Date 12 Oct 2012

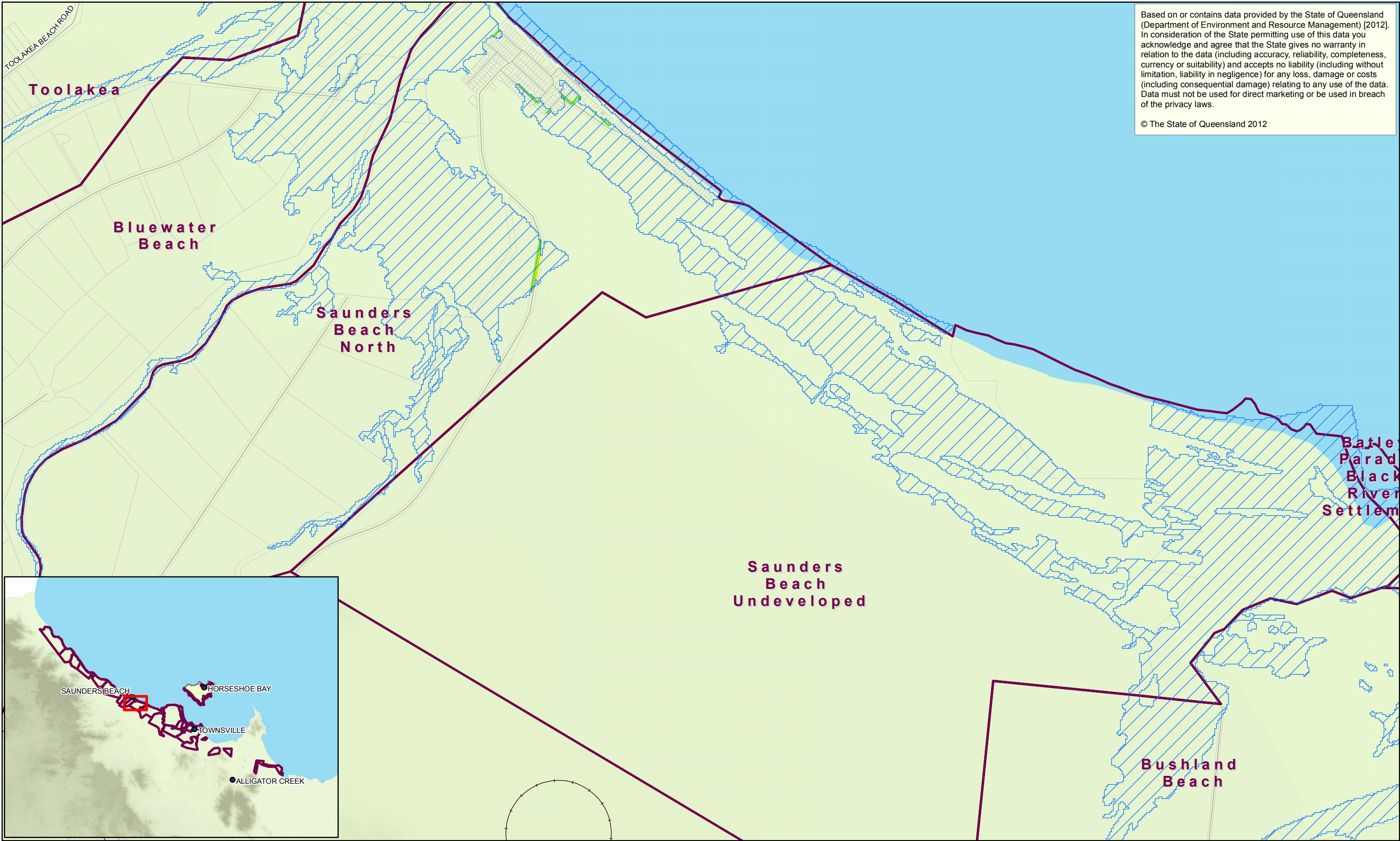
Map Series A4
Sheet 4 of 11



Based on or contains data provided by the State of Queensland (Department of Environment and Resource Management) [2012]. In consideration of the State permitting use of this data you acknowledge and agree that the State gives no warranty in relation to the data (including accuracy, reliability, completeness, currency or suitability) and accepts no liability (including without limitation, liability in negligence) for any loss, damage or costs (including consequential damage) relating to any use of the data. Data must not be used for direct marketing or be used in breach of the privacy laws.

© The State of Queensland 2012





Based on or contains data provided by the State of Queensland (Department of Environment and Resource Management) [2012]. In consideration of the State permitting use of this data you acknowledge and agree that the State gives no warranty in relation to the data (including accuracy, reliability, completeness, currency or suitability) and accepts no liability (including without limitation, liability in negligence) for any loss, damage or costs (including consequential damage) relating to any use of the data. Data must not be used for direct marketing or be used in breach of the privacy laws.

© The State of Queensland 2012

1:20,000 @ A3

0250500750

Metres

Map Projection: Transverse Mercator
Horizontal Datum: GDA 1994
Grid: GDA 1994 MGA Zone 55

N

LEGEND

Town / Locality

Road

Railway

Urban Locality

Properties Boundary

Storm Tide Event
Current Conditions (2012)

Risk to Infrastructure

Acceptable Risk

Tolerable Risk

Unacceptable Risk

Queensland Government

GHD

City of Townsville

Townsville City Council
Coastal Hazard Adaptation Strategy
Storm Tide -
Current Conditions (2012)
Risk To Infrastructure
District: Saunders Beach

Job Number
Revision
Date

41-24609
A
12 Oct 2012

Map Series A7
Sheet 4 of 11

G:\4124609\GIS\Maps\Working\4124609_Stormtide_Current2012_InfraRisk_RevA_20121009.mxd

© 2012. Whilst every care has been taken to prepare this map, GHD, TCC, DERM make no representations or warranties about its accuracy, reliability, completeness or suitability for any particular purpose and cannot accept liability and responsibility of any kind (whether in contract, tort or otherwise) for any expenses, losses, damages and/or costs (including indirect or consequential damage) which are or may be incurred by any party as a result of the map being inaccurate, incomplete or unsuitable in any way and for any reason.

Data source: TCC - Railway, Roads, Properties, Districts (2011). Geoscience Australia - Populated Places (2008). DERM - DEM (2007), Place Names (2010). GHD - Ocean Boundary (2012).

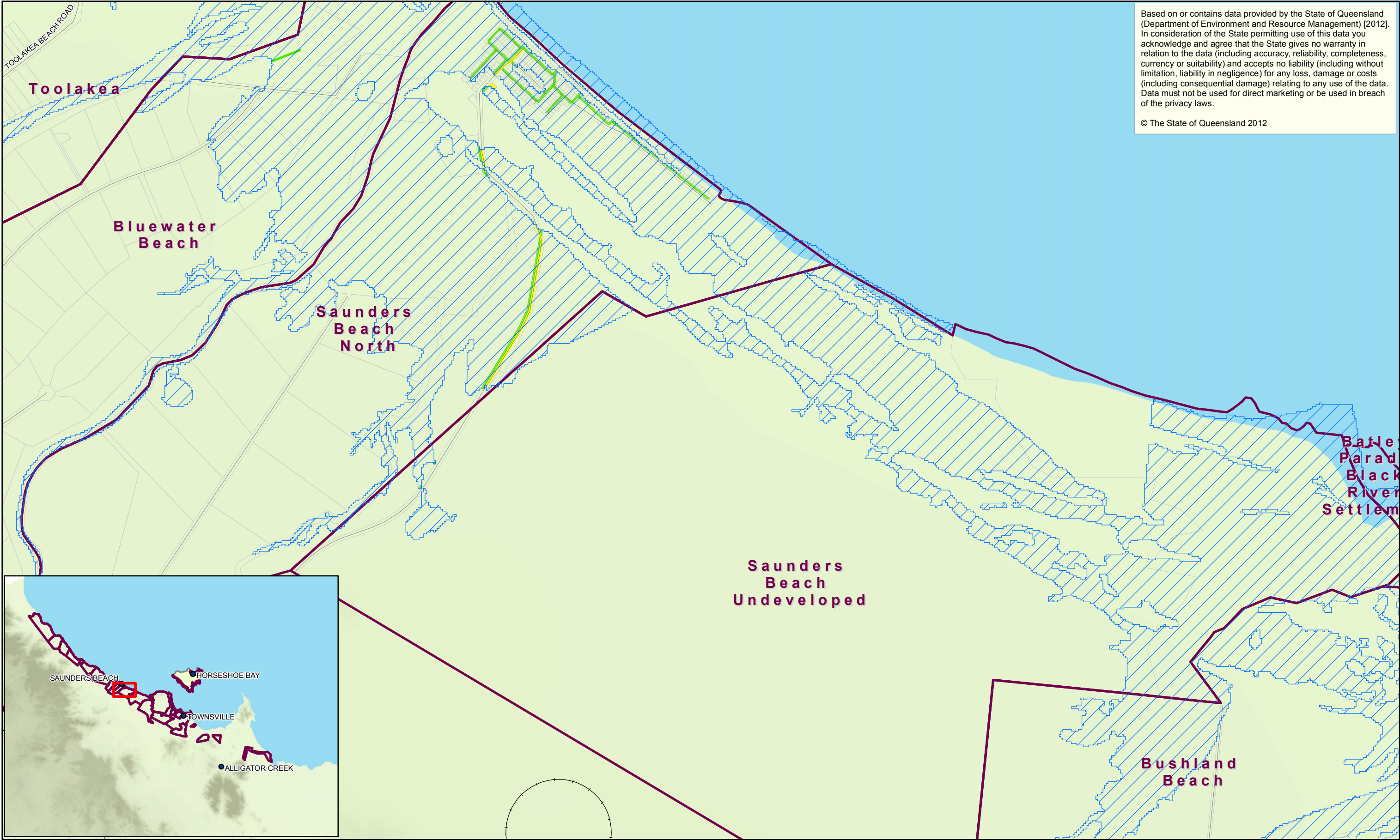
145 Ann Street Brisbane QLD 4000 Australia

T 61 7 3316 3000

F 61 7 3316 3333

E bnemail@ghd.com

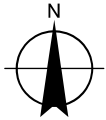
W www.ghd.com



Based on or contains data provided by the State of Queensland (Department of Environment and Resource Management) [2012]. In consideration of the State permitting use of this data you acknowledge and agree that the State gives no warranty in relation to the data (including accuracy, reliability, completeness, currency or suitability) and accepts no liability (including without limitation, liability in negligence) for any loss, damage or costs (including consequential damage) relating to any use of the data. Data must not be used for direct marketing or be used in breach of the privacy laws.

© The State of Queensland 2012

1:20,000 @ A3
0 250 500 750
Metres
Map Projection: Transverse Mercator
Horizontal Datum: GDA 1994
Grid: GDA 1994 MGA Zone 55



LEGEND

- Town / Locality
- Road
- Railway

Urban Locality

Properties Boundary

100 y Return Period Storm Tide Event
2100 Condition (0.8m SLR)

Risk to Infrastructure

Acceptable Risk

Tolerable Risk

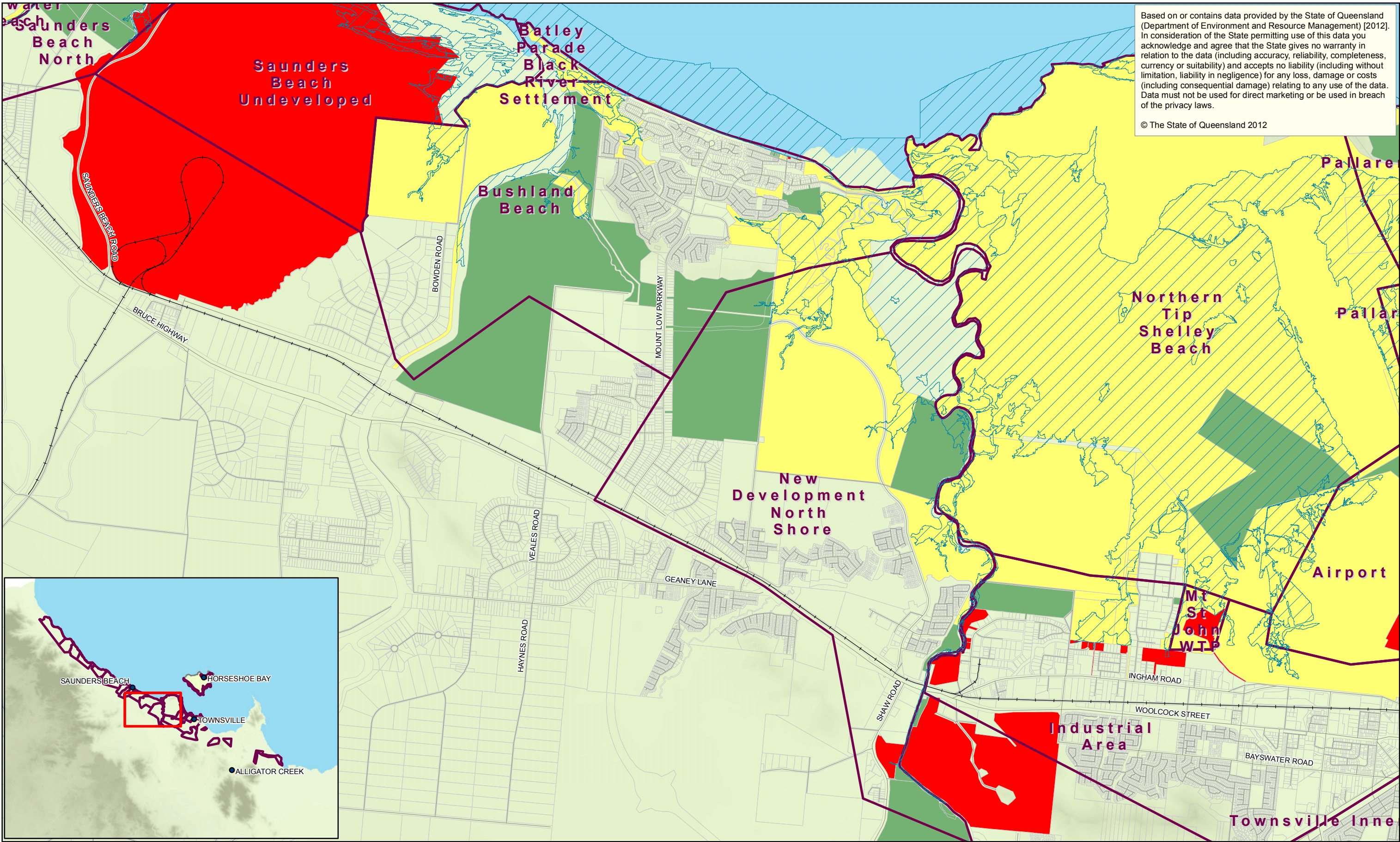
Unacceptable Risk



Townsville City Council
Coastal Hazard Adaptation Strategy
Storm Tide -
2100 Conditions (0.8m SLR)
Risk To Infrastructure
District: Saunders Beach

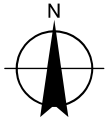
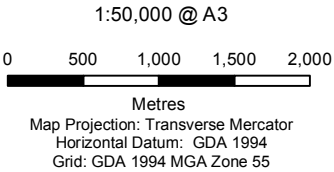
Job Number 41-24609
Revision A
Date 12 Oct 2012

Map Series A8
Sheet 4 of 11



Based on or contains data provided by the State of Queensland (Department of Environment and Resource Management) [2012]. In consideration of the State permitting use of this data you acknowledge and agree that the State gives no warranty in relation to the data (including accuracy, reliability, completeness, currency or suitability) and accepts no liability (including without limitation, liability in negligence) for any loss, damage or costs (including consequential damage) relating to any use of the data. Data must not be used for direct marketing or be used in breach of the privacy laws.

© The State of Queensland 2012



LEGEND

- Town / Locality
- Road
- Railway
- HAT (2012)
- Urban Locality
- Properties Boundary

Risk to Property

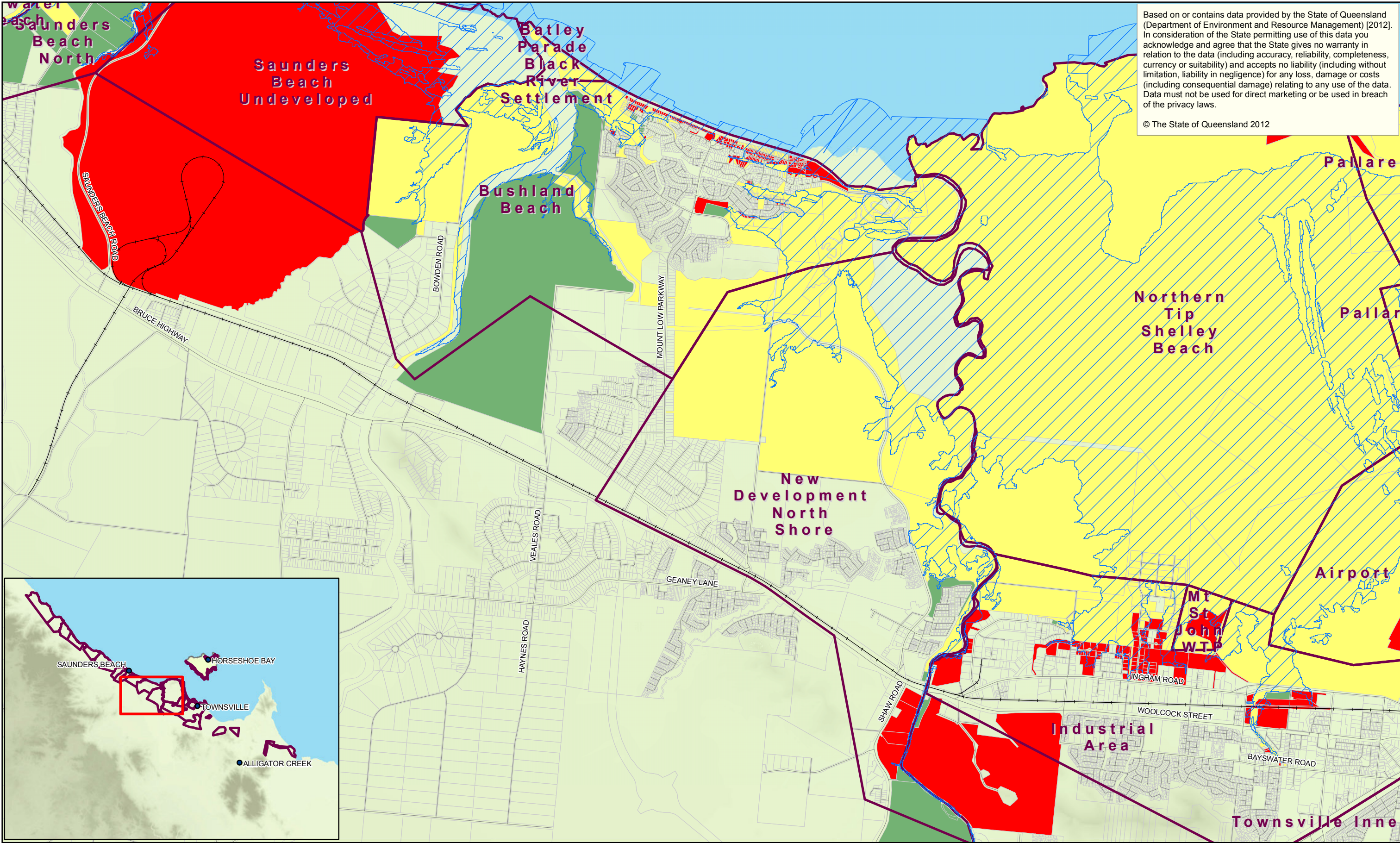
- Acceptable Risk
- Tolerable Risk
- Unacceptable Risk

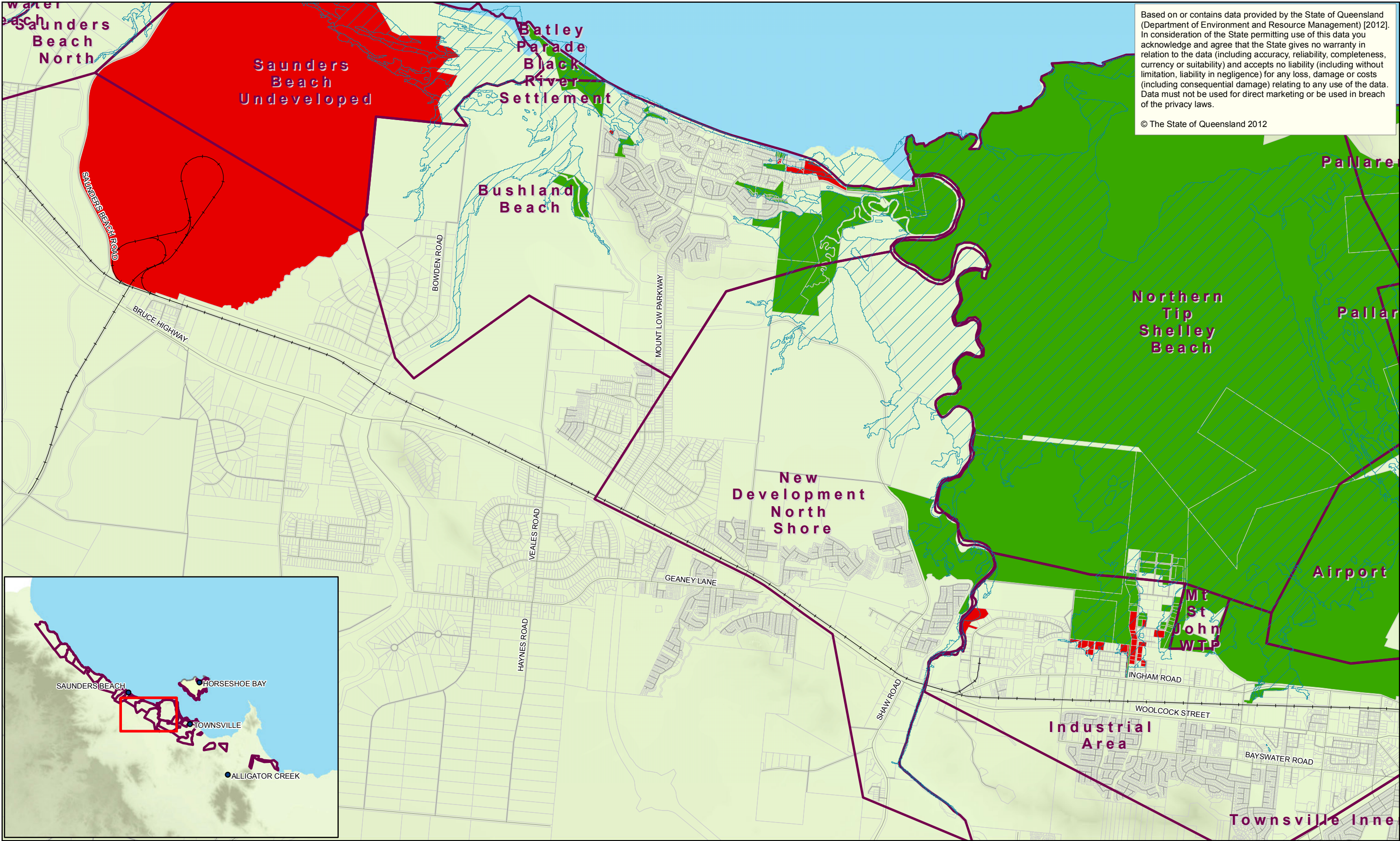


Townsville City Council
Coastal Hazard Adaptation Strategy
Tidal Influence -
Current Conditions (2012)
Risk To Property
District: Bushland Beach

Job Number 41-24609
Revision A
Date 12 Oct 2012

Map Series A1
Sheet 5 of 11

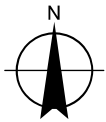




Based on or contains data provided by the State of Queensland (Department of Environment and Resource Management) [2012]. In consideration of the State permitting use of this data you acknowledge and agree that the State gives no warranty in relation to the data (including accuracy, reliability, completeness, currency or suitability) and accepts no liability (including without limitation, liability in negligence) for any loss, damage or costs (including consequential damage) relating to any use of the data. Data must not be used for direct marketing or be used in breach of the privacy laws.

© The State of Queensland 2012

1:50,000 @ A3
0 500 1,000 1,500 2,000
Metres
Map Projection: Transverse Mercator
Horizontal Datum: GDA 1994
Grid: GDA 1994 MGA Zone 55



LEGEND

- Town / Locality
- Road
- +— Railway



Urban Locality



Properties Boundary



Storm Tide Event



Current Conditions (2012)

Risk to Property

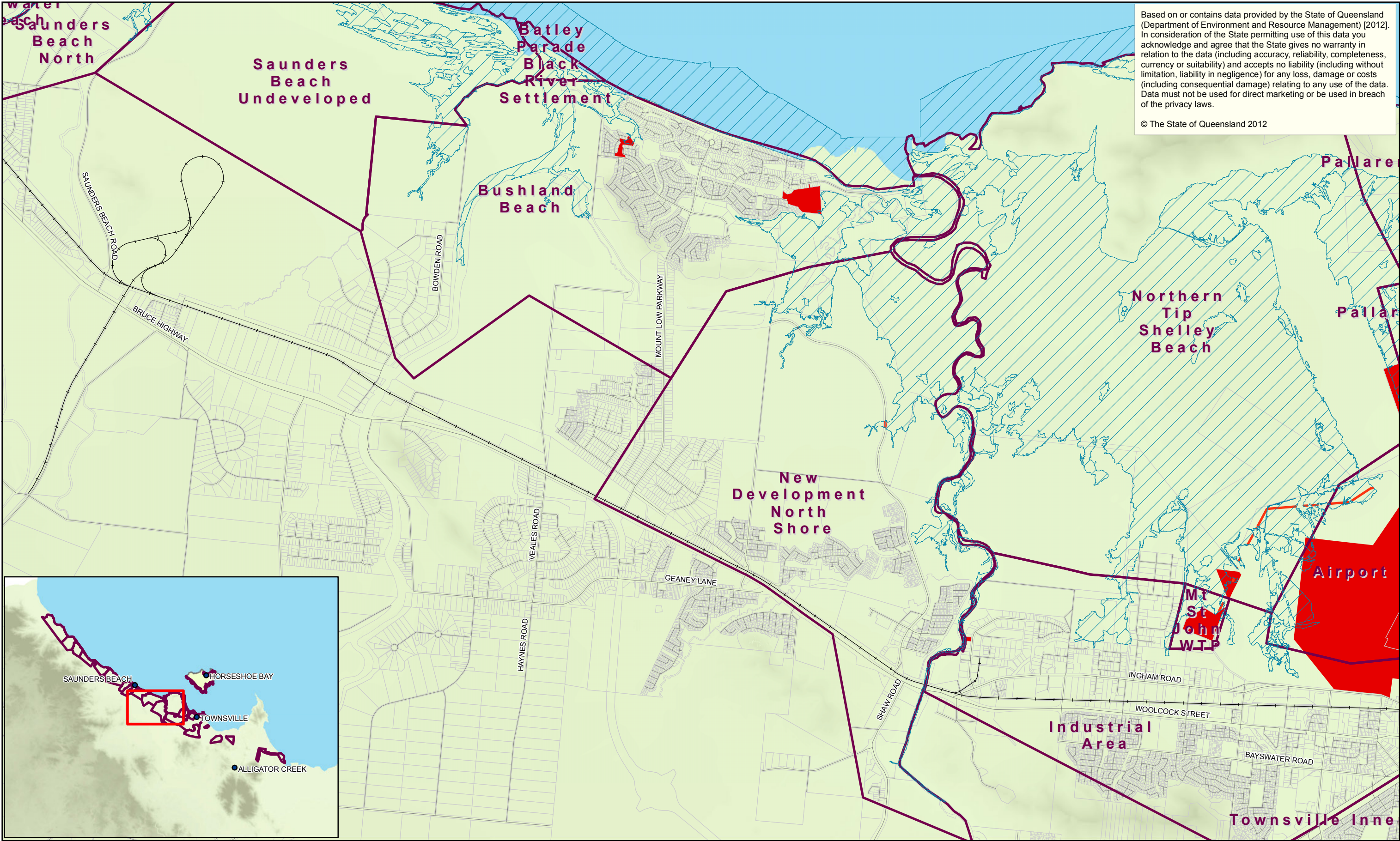
- Acceptable Risk
- Unacceptable Risk



Townsville City Council
Coastal Hazard Adaptation Strategy
Storm Tide -
Current Conditions (2012)
Risk To Property
District: Bushland Beach

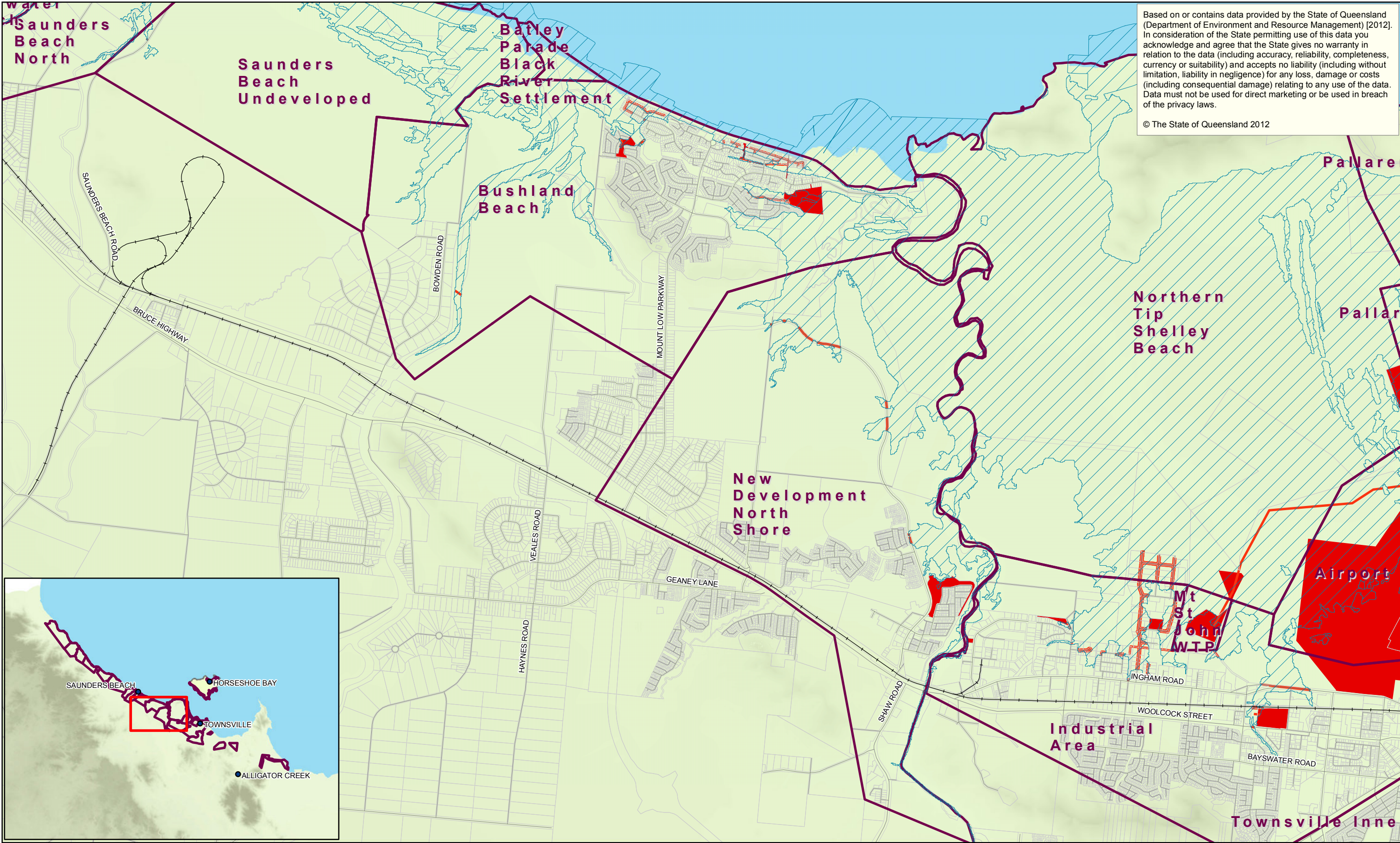
Job Number 41-24609
Revision A
Date 12 Oct 2012

Map Series A3
Sheet 5 of 11



Based on or contains data provided by the State of Queensland (Department of Environment and Resource Management) [2012]. In consideration of the State permitting use of this data you acknowledge and agree that the State gives no warranty in relation to the data (including accuracy, reliability, completeness, currency or suitability) and accepts no liability (including without limitation, liability in negligence) for any loss, damage or costs (including consequential damage) relating to any use of the data. Data must not be used for direct marketing or be used in breach of the privacy laws.

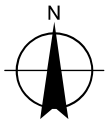
© The State of Queensland 2012



Based on or contains data provided by the State of Queensland (Department of Environment and Resource Management) [2012]. In consideration of the State permitting use of this data you acknowledge and agree that the State gives no warranty in relation to the data (including accuracy, reliability, completeness, currency or suitability) and accepts no liability (including without limitation, liability in negligence) for any loss, damage or costs (including consequential damage) relating to any use of the data. Data must not be used for direct marketing or be used in breach of the privacy laws.

© The State of Queensland 2012

1:50,000 @ A3
0 500 1,000 1,500 2,000
Metres
Map Projection: Transverse Mercator
Horizontal Datum: GDA 1994
Grid: GDA 1994 MGA Zone 55



LEGEND

- Town / Locality
- Road
- + Railway
- Urban Locality
- Properties Boundary
- HAT 2100 Condition (0.8m SLR)

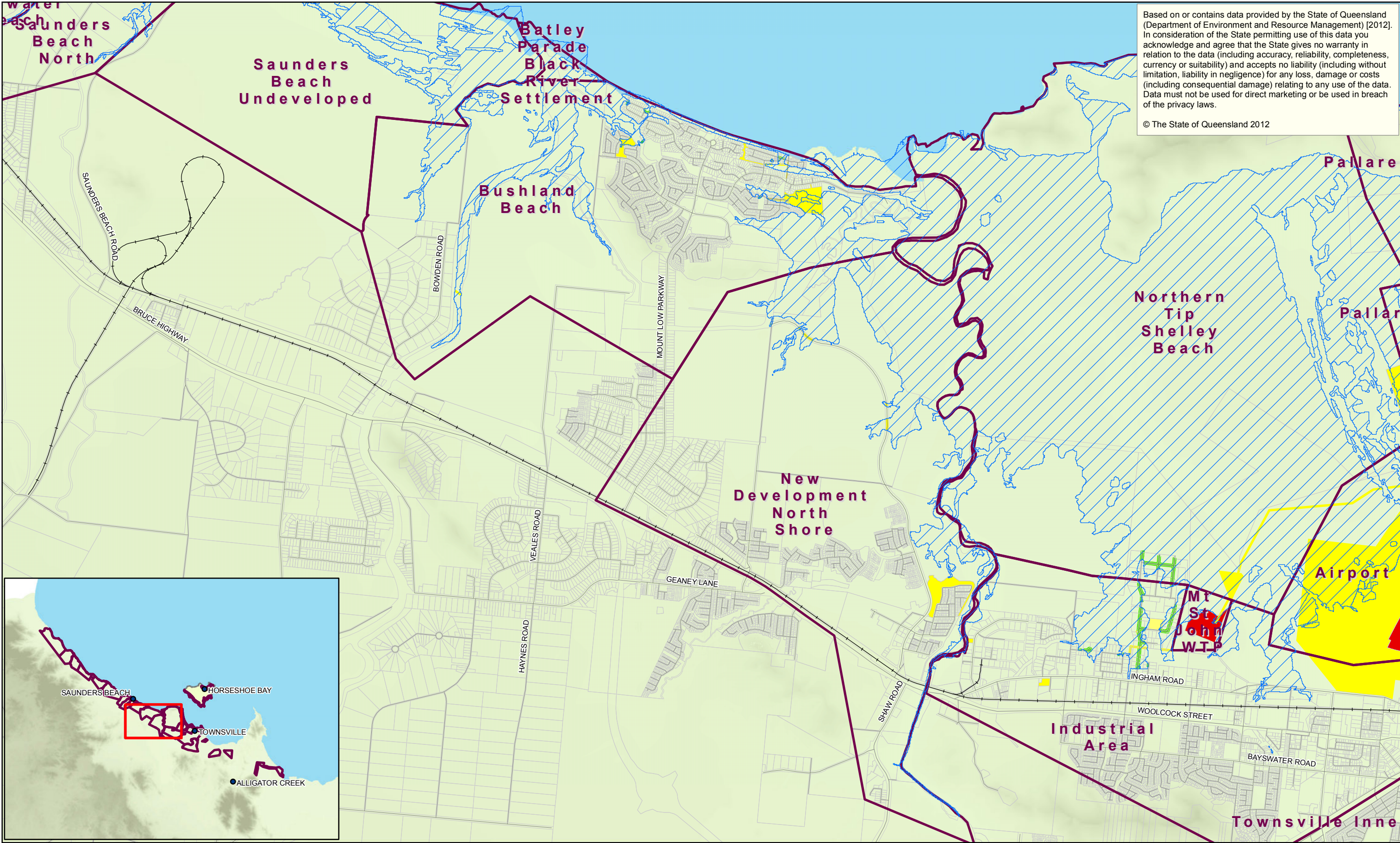
- Risk to Infrastructure**
- Tolerable Risk
 - Unacceptable Risk



Townsville City Council
Coastal Hazard Adaptation Strategy
Tidal Influence -
2100 Conditions (0.8m SLR)
Risk To Infrastructure
District: Bushland Beach

Job Number 41-24609
Revision A
Date 12 Oct 2012

Map Series A6
Sheet 5 of 11



Based on or contains data provided by the State of Queensland (Department of Environment and Resource Management) [2012]. In consideration of the State permitting use of this data you acknowledge and agree that the State gives no warranty in relation to the data (including accuracy, reliability, completeness, currency or suitability) and accepts no liability (including without limitation, liability in negligence) for any loss, damage or costs (including consequential damage) relating to any use of the data. Data must not be used for direct marketing or be used in breach of the privacy laws.

© The State of Queensland 2012

1:50,000 @ A3

0 500 1,000 1,500 2,000

Metres

Map Projection: Transverse Mercator
Horizontal Datum: GDA 1994
Grid: GDA 1994 MGA Zone 55

N

LEGEND

- Town / Locality
- Road
- Railway
- Urban Locality
- Properties Boundary
- Storm Tide Event Current Conditions (2012)

Risk to Infrastructure

- Acceptable Risk
- Tolerable Risk
- Unacceptable Risk

Townsville City Council
Coastal Hazard Adaptation Strategy
Storm Tide -
Current Conditions (2012)
Risk To Infrastructure
District: Bushland Beach

Job Number 41-24609
Revision A
Date 12 Oct 2012

Map Series A7
Sheet 5 of 11

