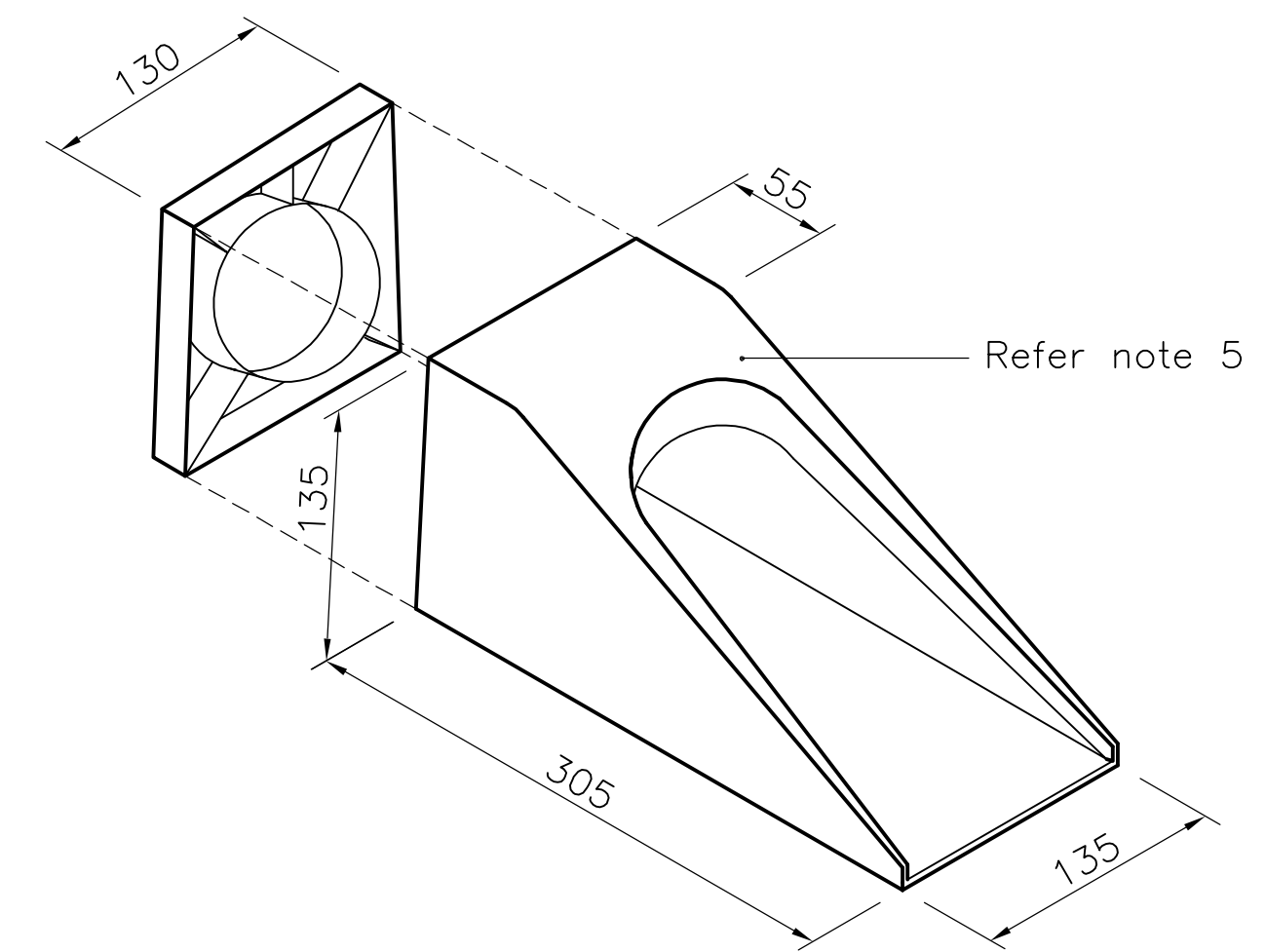


**BARRIER KERB ADAPTOR**  
Typical only 90mm and 100mm galvanised steel



**MOUNTABLE KERB ADAPTOR**  
Typical only 90mm and 100mm galvanised steel

- NOTES**
1. All dimensions are in millimetres unless noted otherwise.
  2. Standard 90mm or 100mm galvanised steel Adaptor to suit Barrier or Mountable type kerb and channel.
  3. Pipe across footpath to be laid with the maximum available cover, and with a minimum grade of 1 in 80.
  4. At existing kerb and channel, saw cut kerb as necessary. Reinststate with N20/10 concrete in accordance with AS1379 and AS3600 to clean concrete faces.
  5. Use kerb adaptors that match kerb profile.
  6. Refer Job drawings/specifications for option to be adopted.
  7. At new developments seal inlet to adaptor.

No.	DATE	DESCRIPTION	AP'D
REVISIONS			
A	26/10/2004	ORIGINAL ISSUE	

NOTES :  
Not to Scale

**THE CITY of THURINGOWA**

86 Thuringowa Drive  
Thuringowa Central, QLD, 4817  
Phone : (07) 4773 8411  
Fax : (07) 4773 8571  
Email : council@thuringowa.qld.gov.au  
Web : www.thuringowa.qld.gov.au

DRAWN: NRM	Engineer Approved: Original Signed By B.Sue Date: 12/04
CHECKED: WJP	Director Approved: Original Signed By B.Bailey Date: 6/12/04

**KERB AND CHANNEL  
DRAINAGE CONNECTIONS**

<b>STANDARD DRAWING ROADWORKS</b>
<b>10091</b>
A