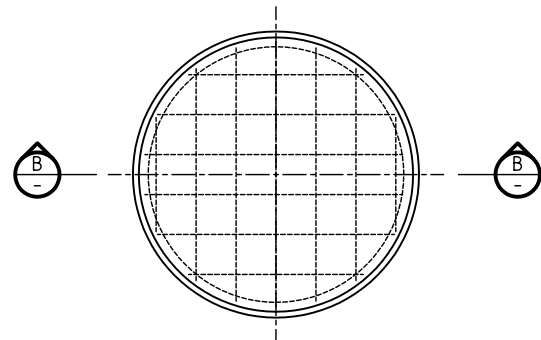
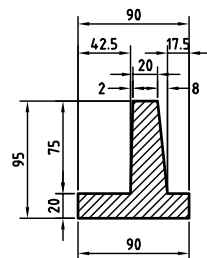


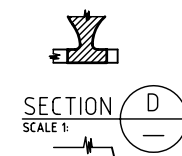
SECTION B
SCALE 1:1



PLAN OF FRAME



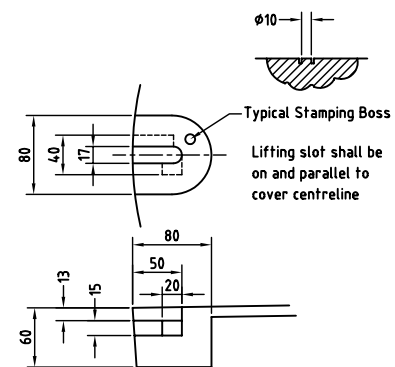
DETAIL 1
SCALE 1:1



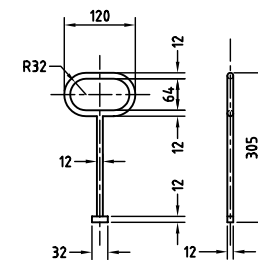
SECTION D
SCALE 1:1

4 Slots as shown

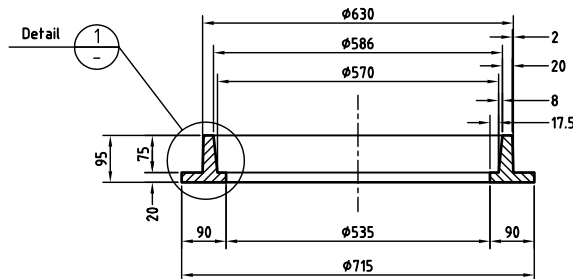
PLAN



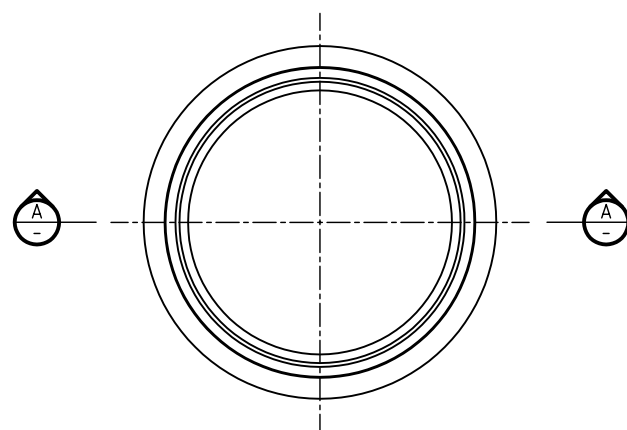
DETAIL 2
SCALE 1:1



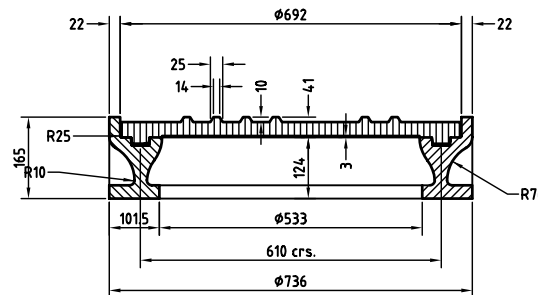
LIFTING KEY
MATERIAL - STEEL



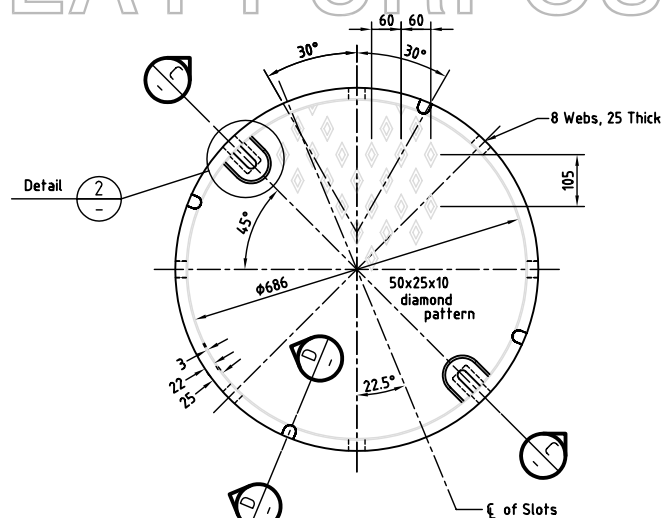
SECTION A
SCALE 1:1



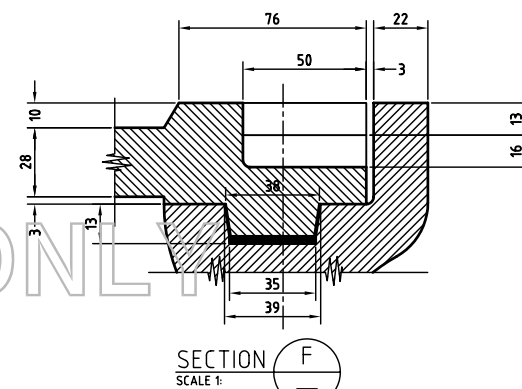
PLAN OF FRAME
TYPE 1
FOR USE IN PRIVATE PROPERTY



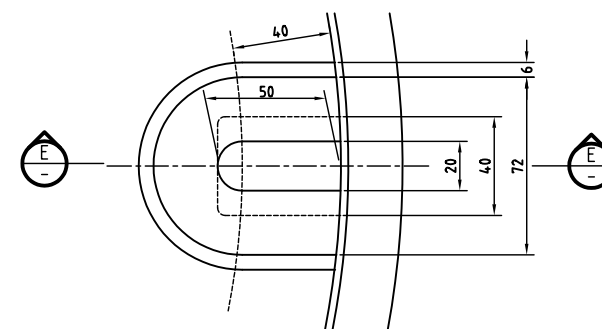
SECTION C
SCALE 1:1



PLAN OF COVER
TYPE 2
FOR USE IN ROAD RESERVE



SECTION F
SCALE 1:1



PLAN OF LIFTING KEYWAY

NOTES FOR MANHOLE TYPE 1:
 MASS : 52KG
 MATERIAL SHALL BE:
 COVER : DUCTILE CAST IRON 600/3
 AS 1831 - 1985
 FRAME : GRAY CAST IRON MINIMUM 1220
 AS 1830 - 1985
 HARDNESS 146 - 185 (HB)
 MACHINE SURFACE SYMBOL : $\sqrt{3}$
 TOLERANCES:
 CAST SIZES ± 1.0 mm
 ANGLE PROFILE ± 0.25
 MACHINED SIZES ± 0.5 mm
 OVERALL DIA OF COVER ± 1.0 mm
 OVERALL ASSEMBLY HEIGHT ± 0.5 mm
 ALL EDGES TO BE SQUARE
 CASTING TO BE FREE OF BURRS AND PITS
 ASSEMBLED UNIT SHALL BE COATED WITH
 BITUMEN BASED COATING (COLD APPLIED)
 TO B.S. 3416 TYPE 2
 DESIGN LOAD AS3996-1992:
 CLASS D : 210 Kn

| ZONE | REF. | REVISIONS | BY | CKD. | DATE |
|------|------|--------------------------------|-----|------|------|
| | D | Updated & drawn electronically | DWW | | |



| ASSOCIATED DRAWINGS | | APPROVED | |
|---------------------|--------------|----------|-----|
| LEVEL DATUM | SV INDEX NO. | DES. | - |
| A.H.D. | | DRN. | DWW |
| ERGN | TELSTRA | SD. | GRP |
| | | ENG. | RCC |

| DRAINAGE STANDARDS MANHOLE LIDS COVERS & FRAMES | | | |
|---|--------|----------|-------------|
| DATE | M/FILM | SCALE | DRAWING NO. |
| 11/2002 | | as shown | 14056 D A1 |