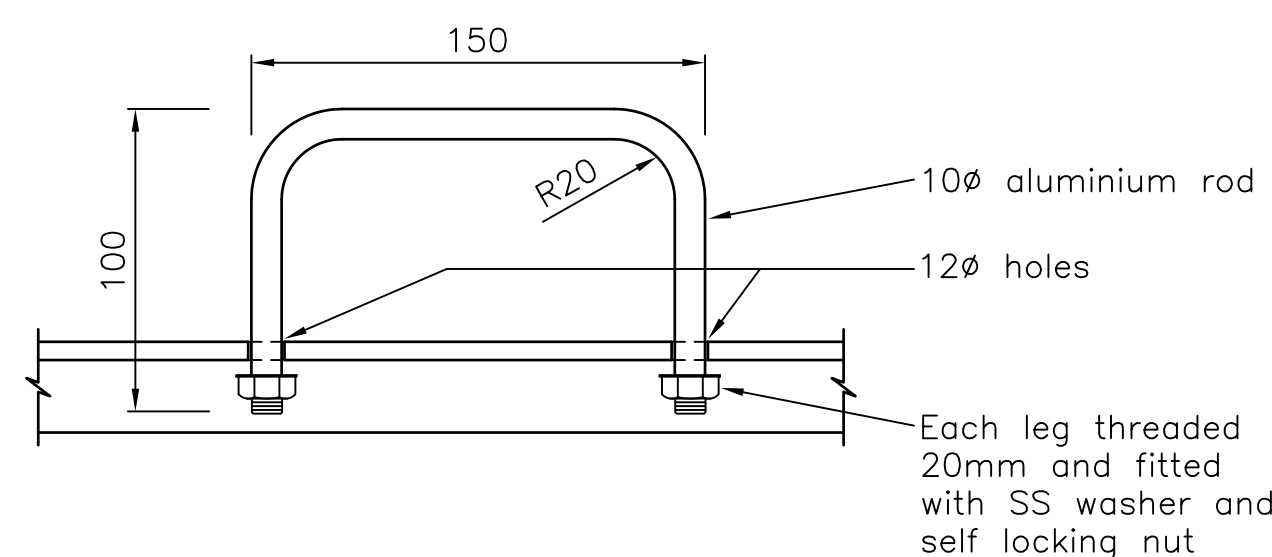
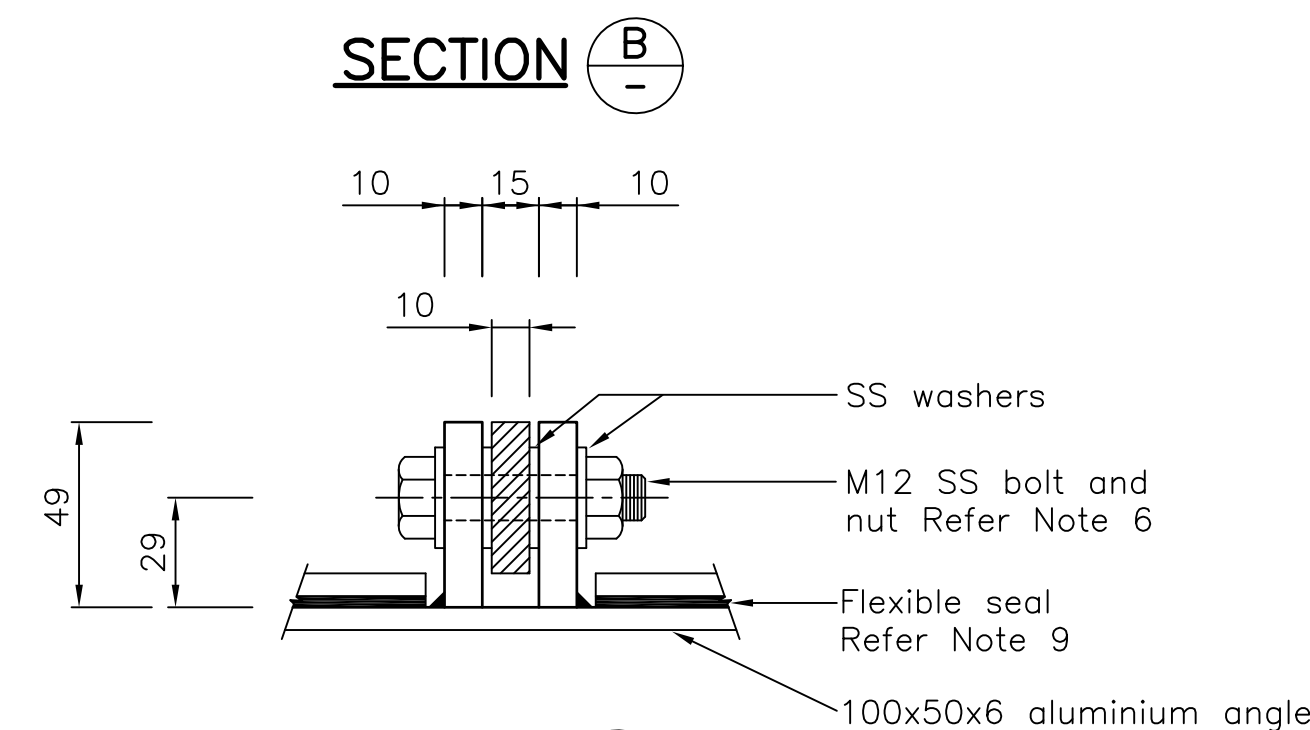


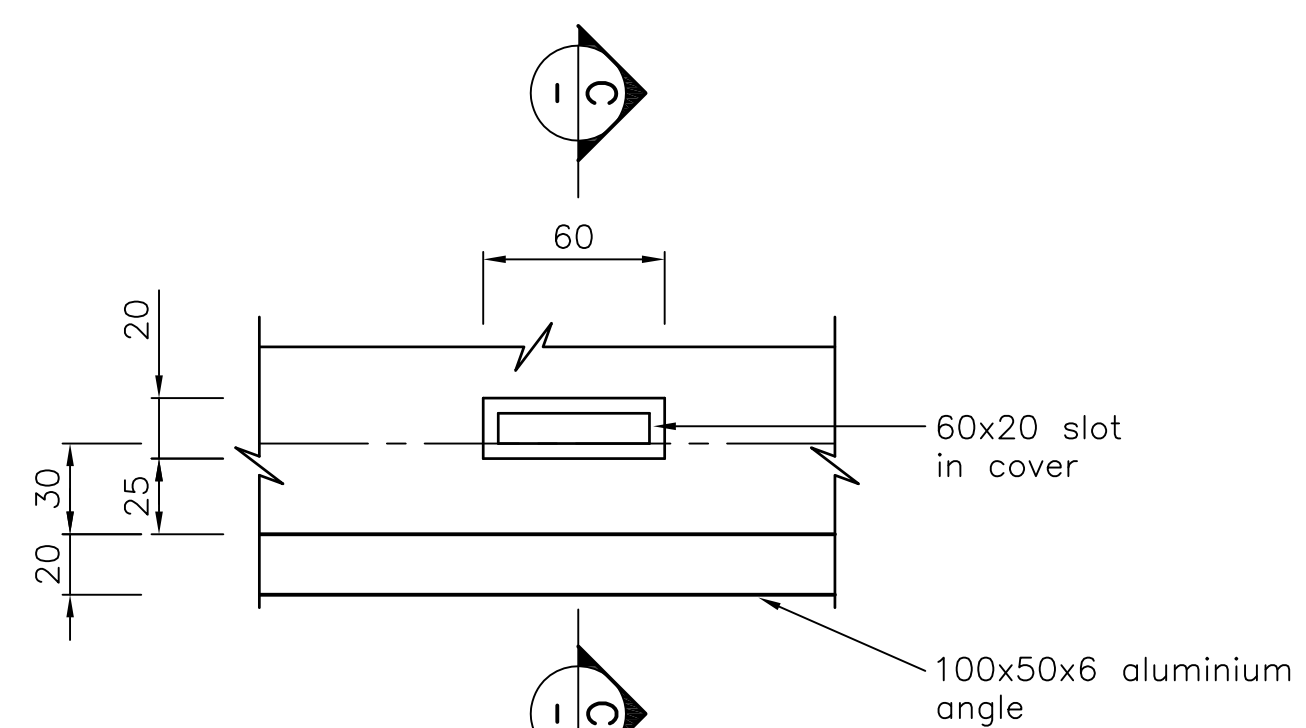
DETAIL 1



DETAIL 2 - LIFTING HANDLE

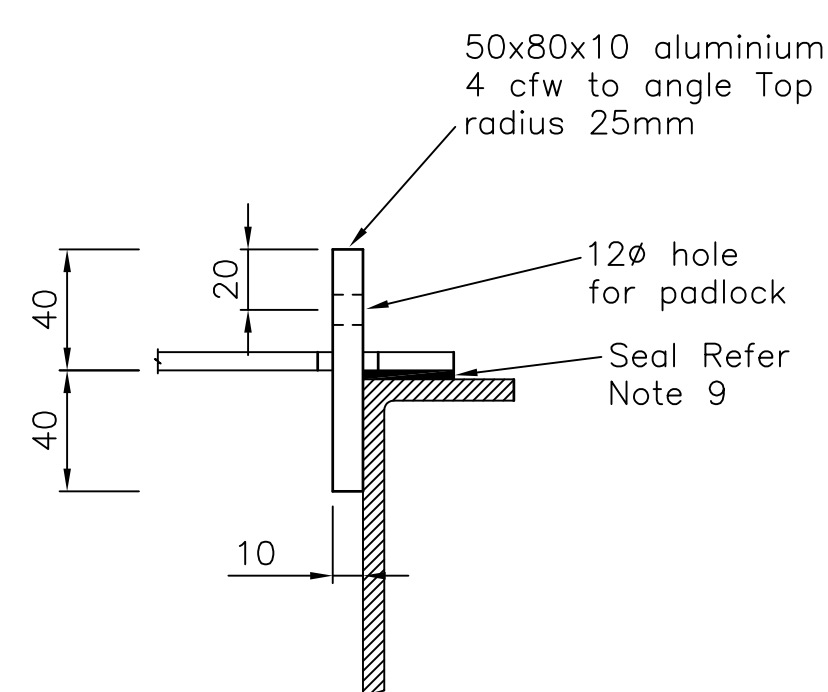


SECTION E-E

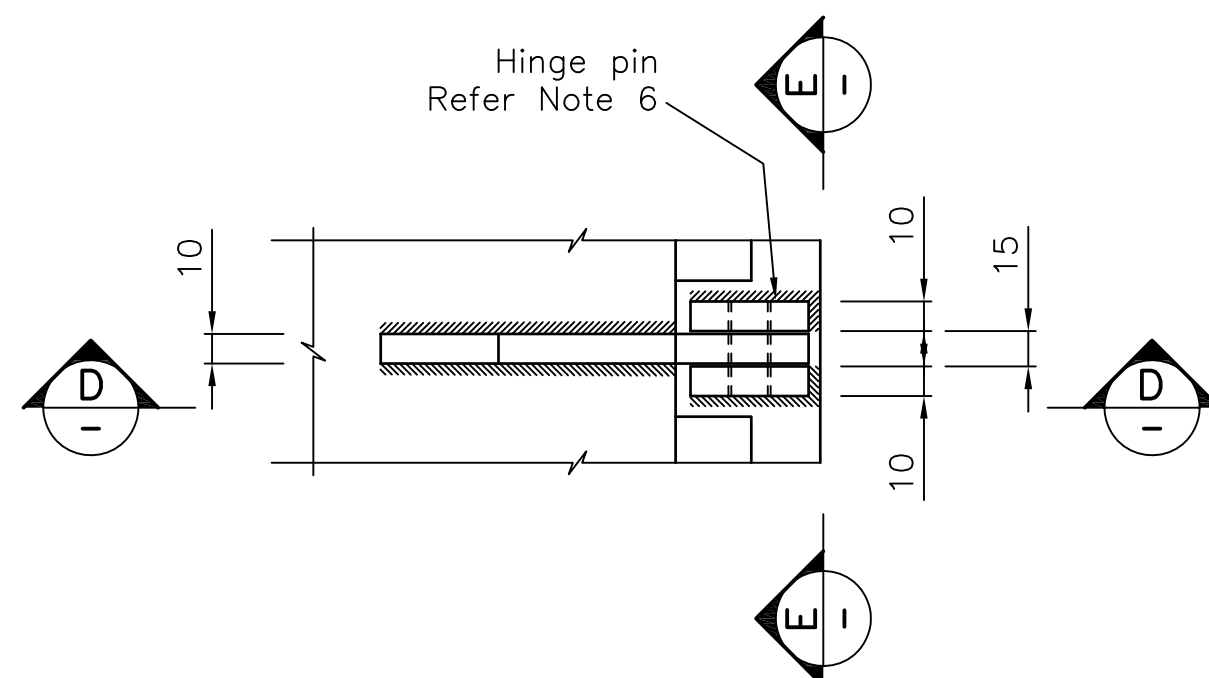


PLAN

DETAIL 3 - LOCKING DEVICE

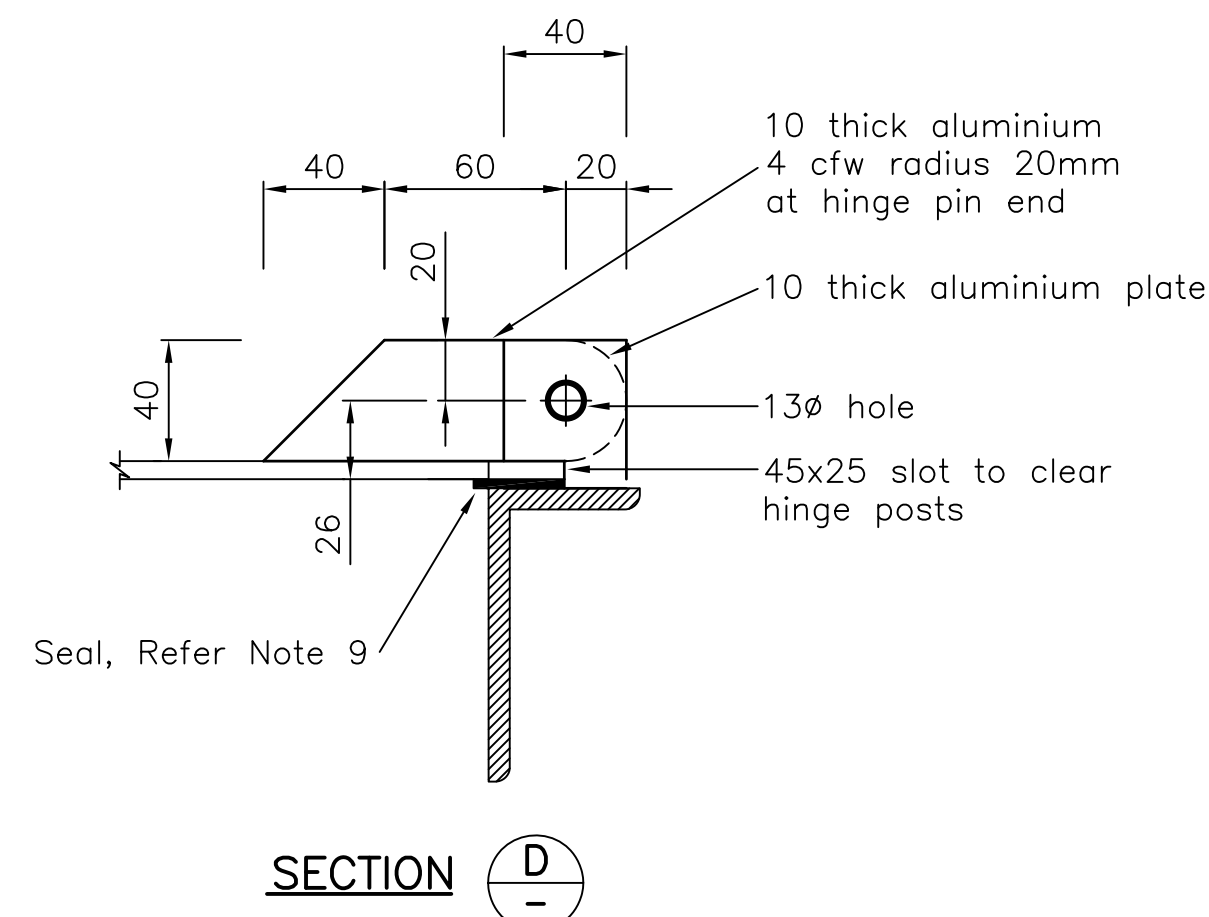


SECTION C-C



PLAN

DETAIL 4 - HINGES



SECTION D-D

NOTES

- All dimensions are in millimetres unless noted otherwise.
- Main dimensions to be increased if required to ensure clearance for pump units.
- Dimensions of openings in roof slab to be verified prior to commencement of fabrication.
- Covers are not to be subjected to vehicle loads.
- Welding of all components to be carried out in sequence to avoid distortion of covers and frames. Welds to be four continuous fillet weld. Frame joints to be mitre cut and butt welded.
- Hinge pin nuts to be single self locking or double lock nuts. Stainless steel items to be Grade 316.
- Fasteners to concrete to be approved chemical or masonry anchors stainless steel Grade 316 embedded depth to be in accordance with manufacturer's directions.
- All aluminium components to be marine grade alloy.
- Seal to be 30mm x 3mm thick foam neoprene or approved alternative bonded to edges of covers seating on frame.
- Chain/Cable hooks to be positioned opposite hinge of lids and adjacent to control cubical.
- Refer Standard Drawing SD-430 for Safety Grill Details.

No.	DATE	DESCRIPTION	AP'D
B		APPEARANCE AMENDED	
A		ORIGINAL ISSUE	
REVISIONS			

NOTES : SUPERSEDES 10046B AND 10440C

Full Size A1
Not to Scale

DRAWN: DESIGN OFFICE
CHECKED: D. MOSELEY
Design Engineer Approved: Original signed by P. TURL
Date: 26/07/2012
Manager Approved: Original signed by P. MENDIOLEA
Date: 26/07/2012



**SMALL SEWERAGE PUMP STATIONS
TWO PART ACCESS COVER AND FRAME**

**STANDARD DRAWING
SEWERAGE**
SD-425 B