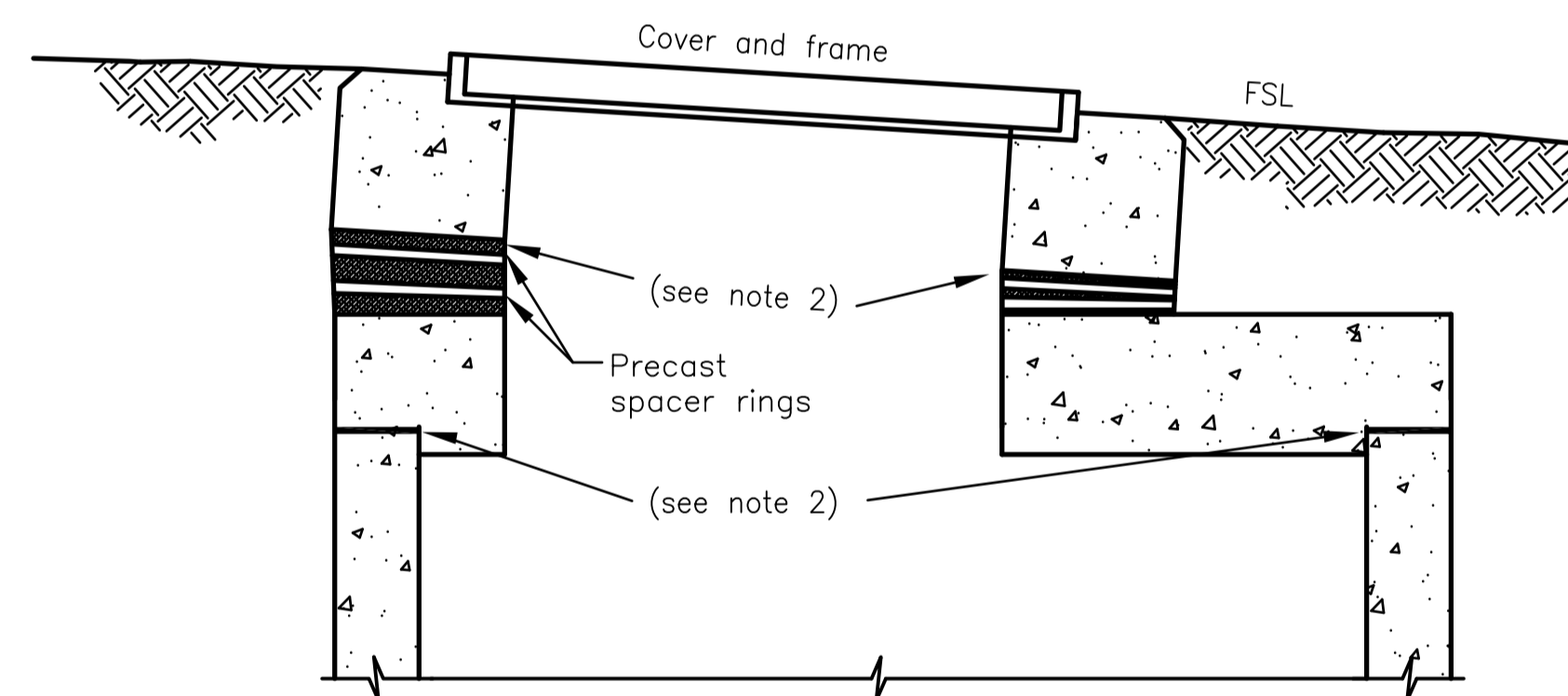
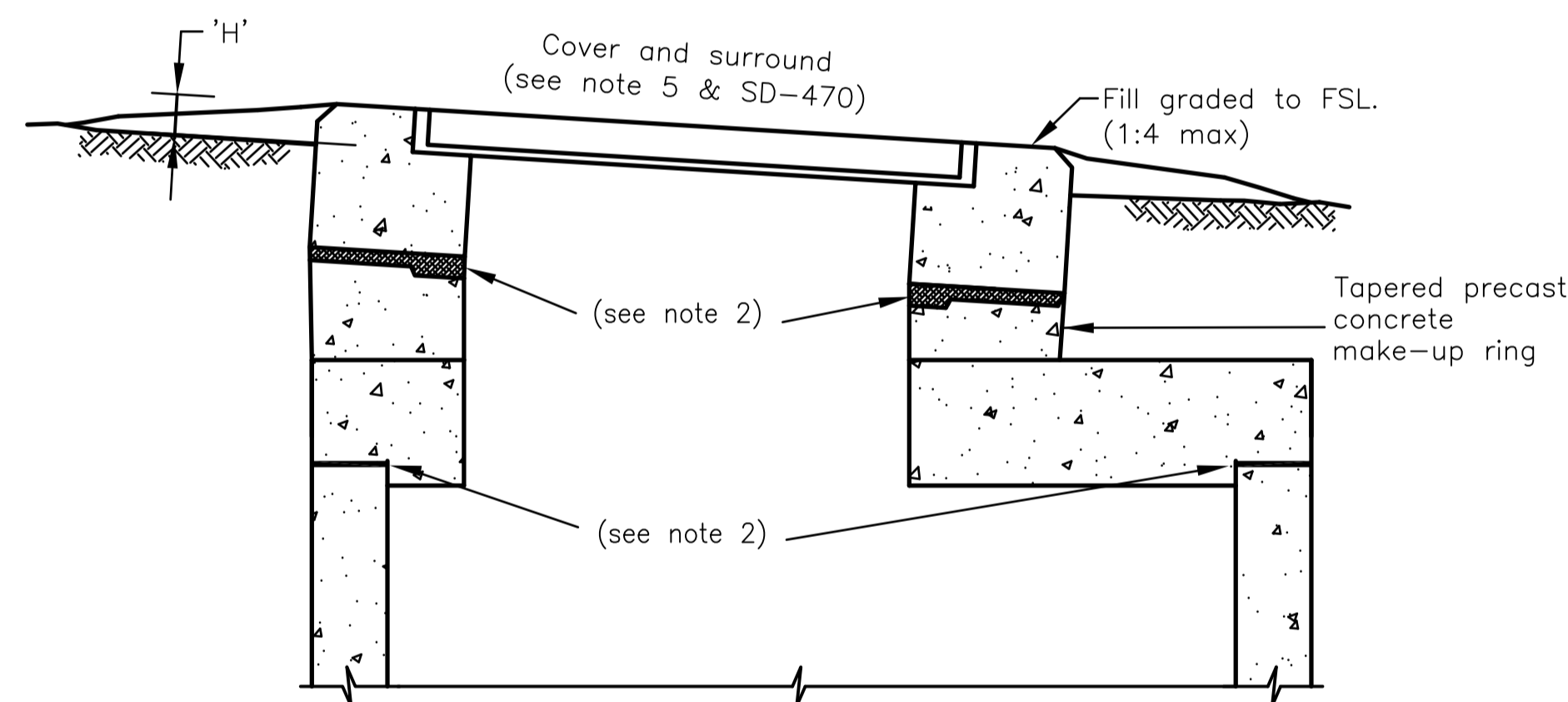


PRECAST & CAST IN-SITU MAINTENANCE HOLES



SLOPING GROUND  
(SEE NOTE 5)

NON TRAFFICABLE COVERS

TRAFFICABLE COVERS

**SELECTION OF MH COVERS**

ALL COVERS TO BE WATER TIGHT (SEE NOTE 6)

LOCATION	CLASS
RESERVES	B – NON-TRAFFICABLE
ROADWAYS	D – TRAFFICABLE
LOCATIONS SUBJECT TO FLOODING etc.	D – TRAFFICABLE WITH BOLT-DOWN (SEE NOTE 3)

**FINISHED LEVELS OF MH COVERS**

LOCATION	H
UNDEVELOPED AREAS	150
NEW SUBDIVISIONS	150
ROADS, LANE WAYS, FOOTWAYS & DRIVEWAYS	FLUSH
EXISTING BUILT UP AREAS	50
OTHER AS SPECIFIED (EG ABOVE FLOOD LEVEL)	

**NOTES**

- All dimensions are in millimetres unless noted otherwise.
- Sealing methods
  - make joints between shaft top/make-up ring and cover support ring using
    - Butyl-mastic, or
    - Mortar made from 3 parts sand to 1 part cement.
  - Apply butyl-mastic in accordance with manufacturers specification.
  - Thickness of cement mortar at any joint to be no greater than 50.
  - Scabble and clean joint surfaces so that all loose or soft material is removed.
  - Joint surfaces to be brushed clean, sponged wet and primed with a cement/water slurry prior to placing the cement mortar.
- In areas subject to surcharge, use cast in-situ mh dowel or bolt cover slabs, DI cover and frame to the shaft section in such a manner that separation during surcharge is prevented. See SD-470.
- Where specified join metal frame to cast in-situ MH riser as follows:
  - Make joints between shaft top and metal frame using butyl-mastic and locking down bolts, equally placed around the circumference.
  - Use 12 diameter galvanised or stainless steel bolts extending 75 min into concrete.
  - For non-trafficable locations use a minimum of two bolts.
  - For trafficable locations use a minimum of four bolts.
- Maximum permissible slope of covers:
  - Class "B" 1 in 4
  - Class "D" 1 in 10
- Maintenance hole covers and frames shall be cast iron or ductile, iron water tight and gas tight to 1.5kpa, in accordance with AS3996.

NOTES : BASED ON FORMER WSAА DRAWING SEW-1308

Full Size A1

DRAWN: DESIGN OFFICE

CHECKED: D. MOSELEY

Not to Scale

Design Engineer Approved: Original signed by P. TURL

Date: 26/07/2012

Manager Approved: Original signed by P. MENDIOLEA

Date: 26/07/2012



Ph: (07) 4727 9000  
www.townsville.qld.gov.au

**MAINTENANCE HOLES  
TYPICAL MH COVER ARRANGEMENTS**

**STANDARD  
DRAWING  
SEWERAGE**

**SD-475 B**

No.	DATE	DESCRIPTION	AP'D
B		NOTES AMENDED	
A		ORIGINAL ISSUE	
REVISIONS			