

Reef Assist Business Partnerships Program

About

Townsville City Council is looking to partner with local businesses or non-for profit (NFP) organisations, to amplify and create resilience in their operations, by employing and creating environmental teams for healing the Townsville landscape over the next 12 months.

This program is flexible to allow for innovative solutions and models of support, to provide benefits to businesses, and key natural environments.

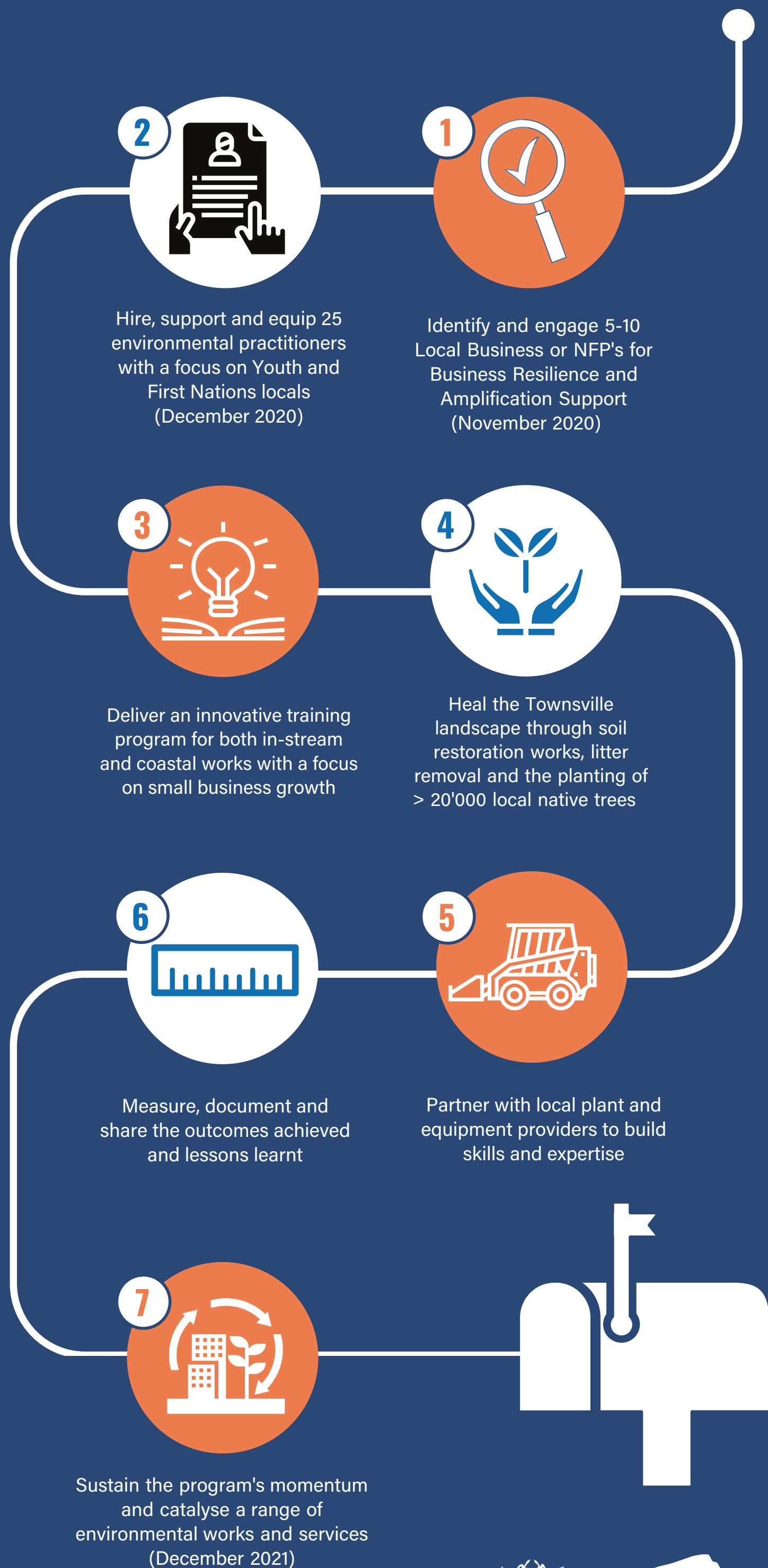


The Business Activation and Environmental Restoration Program is funded through the Queensland Government's Reef Assist Program and delivered by Townsville City Council.



Reef Assist Business Partnerships Program

Objectives and Timeline



The Business Activation and Environmental Restoration Program is funded through the Queensland Government's Reef Assist Program and delivered by Townsville City Council.



Reef Assist Business Partnerships Program

Benefits to Businesses



Wage contributions for up to five (5) new staff at above award wage for a period of 12 months. All necessary safety equipment, tools and vehicles will also be provided for the contract year.



Benefit from access to sustainability experts delivering free field based training and advice. Also receive free business coaching to grow and adapt your business into and out of COVID-19.



Transform and enhance local waterways, wetlands and beaches with meaningful work. Be active in creating and shaping Townsville's tourism and environmental future.



Activate potential grant funding and employment subsidies that can benefit the business.



Enable a pathway for future work in a recognised local growth industry. Other environmental works are planned to commence as the program finishes.



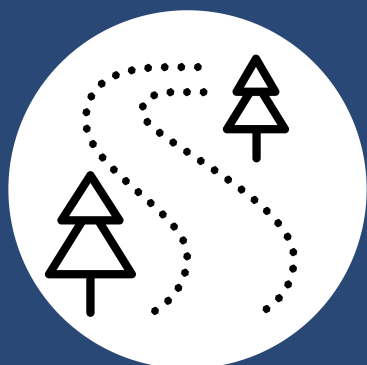
Learn on the job through the support of project experts in soil science, vegetation management and regenerative floodplain management.



Receive detailed works planning from the project team to provide both a work structure and seasonal flexibility in restoration tasks.

Reef Assist Business Partnerships Program

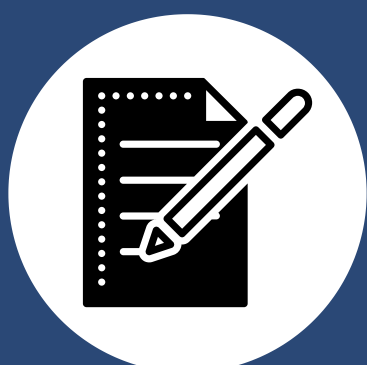
Key Activities



Construction of light infrastructure such as walking paths, seating and learning areas to activate and enhance regional ecotourism.



Utilising weeds and other catchment organics to deliver restorative Catchment Humification works.



Trialling, demonstrating and sharing innovative biological solutions to biological catchment challenges.



Building strong and resilient site soils through holistic chemical, biological and structural soil modifications.



Seed collection, grow-out and planting of native vegetation using innovative approaches such as Induced Seasonal Dormancy (Oscaring) and Geospatial tagging.



Building and applying probiotic formulations that will catalyse microbiological and macrobiological processes within the catchment.