



How to Read Your Smart Water Meter

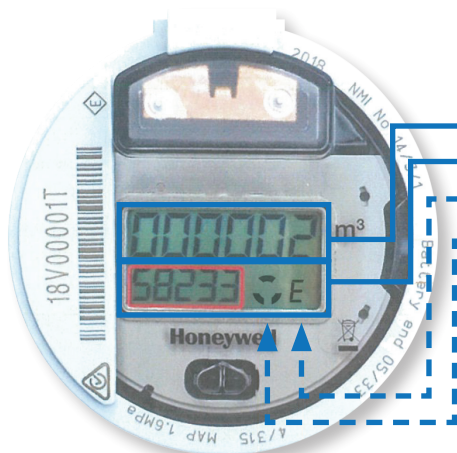
V200HT Digital Water Meter



Your Smart Water Meter is designed to transmit the meter reading automatically to your water utility, however it can be read manually from the digital display.

The display repeats on a 60 second cycle as follows:

Register Display	Function	Duration
	Volume Display <ul style="list-style-type: none"> • Top line (large digits) displays billable units in cubic meters or kilolitres. Reading shown = 2 m³ or 2 kl • Bottom line (small digits) displays non-billable units in litres. Note: Last 2 digits are 0.01 litre. Reading shown = 582.33 litres • Telltale/Flow Direction Indicator (Clockwise = Forward Flow). Will disappear when there is no flow. 	52 seconds
	Flow Rate Display <ul style="list-style-type: none"> • Bottom line (small digits) displays current flow rate in litres/hour followed by "F" for flow rate. • Reading shown = 123 litres/hour 	2 seconds
	Diagnostic Display <ul style="list-style-type: none"> • Bottom line (small digits) displays a diagnostic code (usually "-----", but may differ from shown). • For utility/factory use only. 	2 seconds
	Display ON Test <ul style="list-style-type: none"> • All LCD segments are illuminated to confirm the display is fully functional. • Note the "E" flag will be displayed during this test. This is not an error. • If the "E" flag displays continuously, the meter battery is near the end of its life. 	2 seconds
	Display OFF Test <ul style="list-style-type: none"> • All LCD segments are blank to confirm the display integrity. 	2 seconds



- Top line of display
- Bottom line of display
- E indicator
- Telltale/Flow Direction Indicator

Figure 1- V200HT Display