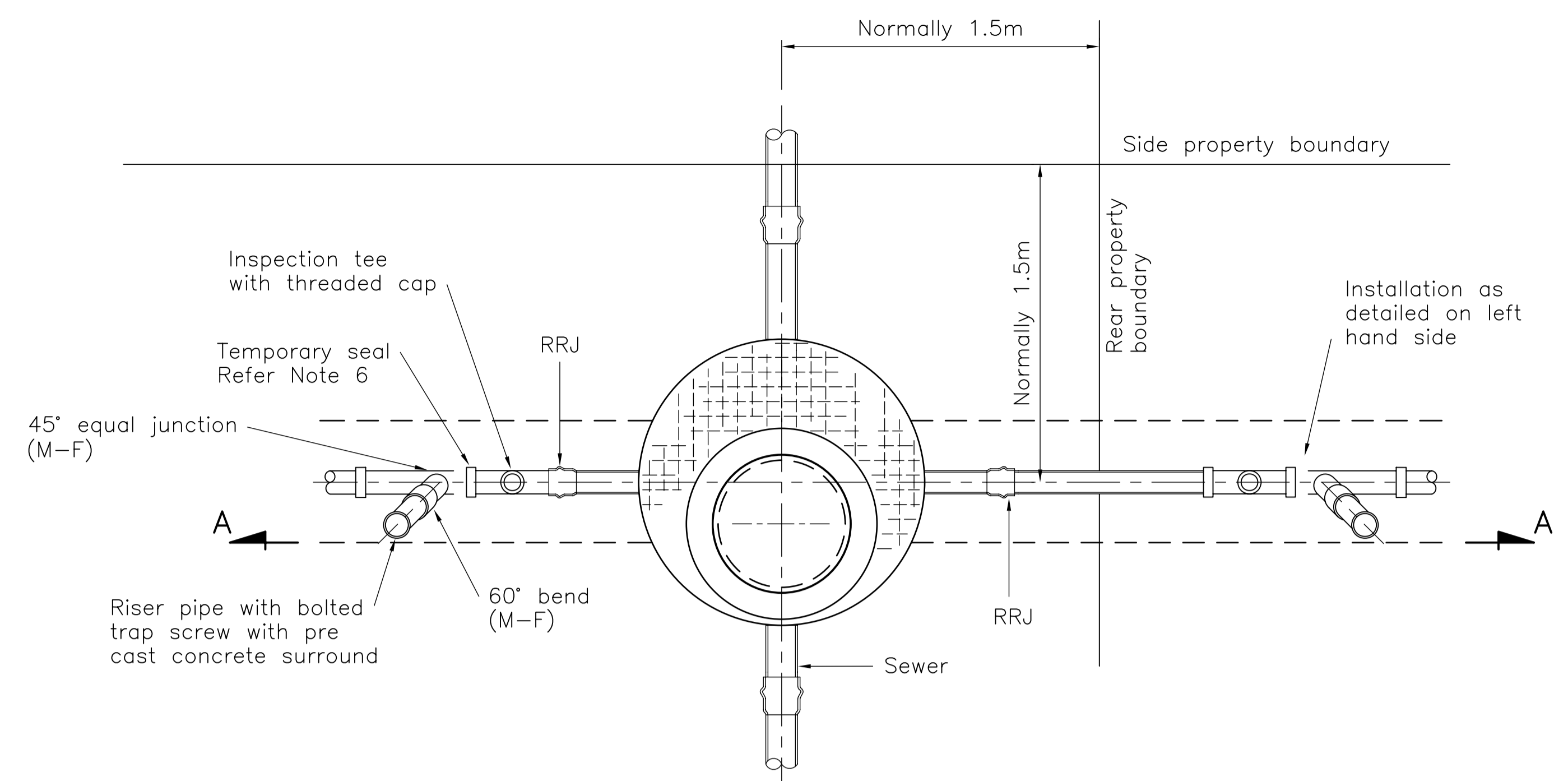


SECTION A-A

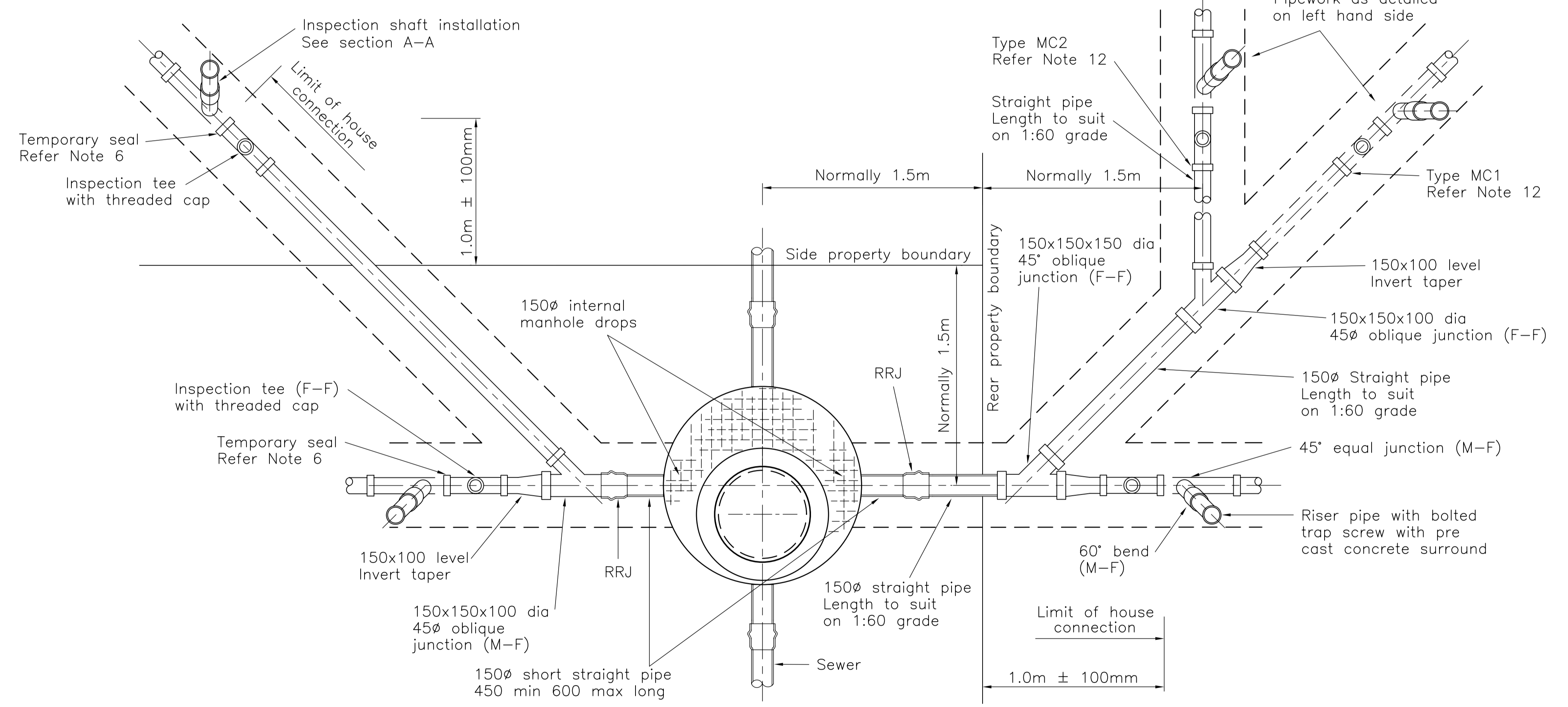


INDICATIVE PLAN

SINGLE CONNECTION TO ONE OR TWO ALLOTMENTS

NOTES

1. All dimensions are in millimetres unless noted otherwise.
2. House connection pipes and fittings to be 100mm diameter uPVC except where shown otherwise complying with AS 1260 unless approved otherwise by the Director, Infrastructure Services. Joints to be solvent weld type except where shown as rubber ring jointed (RRJ).
3. All joints in sewer pipes and fittings to be rubber ring type.
4. Short pipes minimum 450mm maximum 600mm long, to be flexibly jointed to all house drains at manholes.
5. House drains may also be connected to manholes by internal drops. Refer Drawing 10420.
6. Temporary seal to be provided by threaded cap.
7. Maximum cover depth of house connection to be 1.5m unless approved otherwise by the Director, Infrastructure Services.
8. The end of each house connection shall be marked with tape tied to the end of inspection pipe. Tape to extend vertically upwards and finish 150mm below finished surface level.
9. Over excavation shall be back filled with sand compacted to minimum 95% of maximum dry density to AS 1289 5.1.1 (Standard compaction).
10. All house connections shall be tested separately or in conjunction with manhole testing.
11. Limit of house connection is also the limit of developer's installation and limit of Council's maintenance responsibility.
12. Use of Type MC1 or MC2 connection is dependent on location of side property boundary. Limit of connection to be at upstream end of inspection tee, 1.0m ±100mm inside property served by connection.
13. House connection extension shall not exceed a total length of 30m from the manhole to the start of the housedrain.



INDICATIVE PLAN

DUAL CONNECTIONS TO TWO OR MORE ALLOTMENTS

NOTES : Not to Scale

No.	DATE	DESCRIPTION	AP'D
D	13/4/2006	AMENDMENT TO LIMIT OF HOUSE CONNECTION/LIMIT OF HOUSE DRAIN LINE	
C	26/10/2004	AMEND TITLES TO SINGLE AND DUAL CONNECTION TO ALLOTMENTS	
B	28/3/2003	ADD 150x100mm LEVEL INVERT TAPER, CHANGE 100mm TO 150mm PIPE	
A	1/7/1999	ORIGINAL ISSUE	
		REVISIONS	

THE CITY of THURINGOWA

86 Thuringowa Drive
Thuringowa Central, QLD, 4817
Phone : (07) 4773 8411
Fax : (07) 4773 8571
Email : council@thuringowa.qld.gov.au
Web : www.thuringowa.qld.gov.au

DRAWN: NRM	Engineer Approved: Original signed by S.E.Gray Date: 27/4/2006
CHECKED: WP	Director Approved: _____ Date: _____

uPVC HOUSEDRAIN CONNECTIONS TO SEWER MANHOLES

STANDARD DRAWING SEWERAGE

10425

A	B	C	D
---	---	---	---