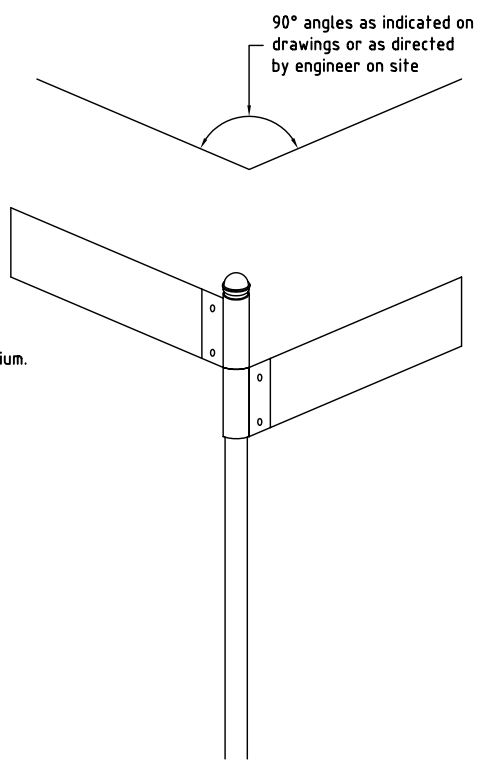
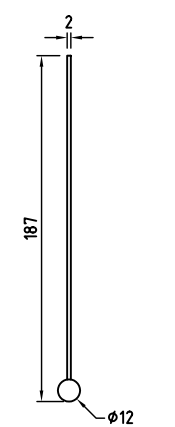


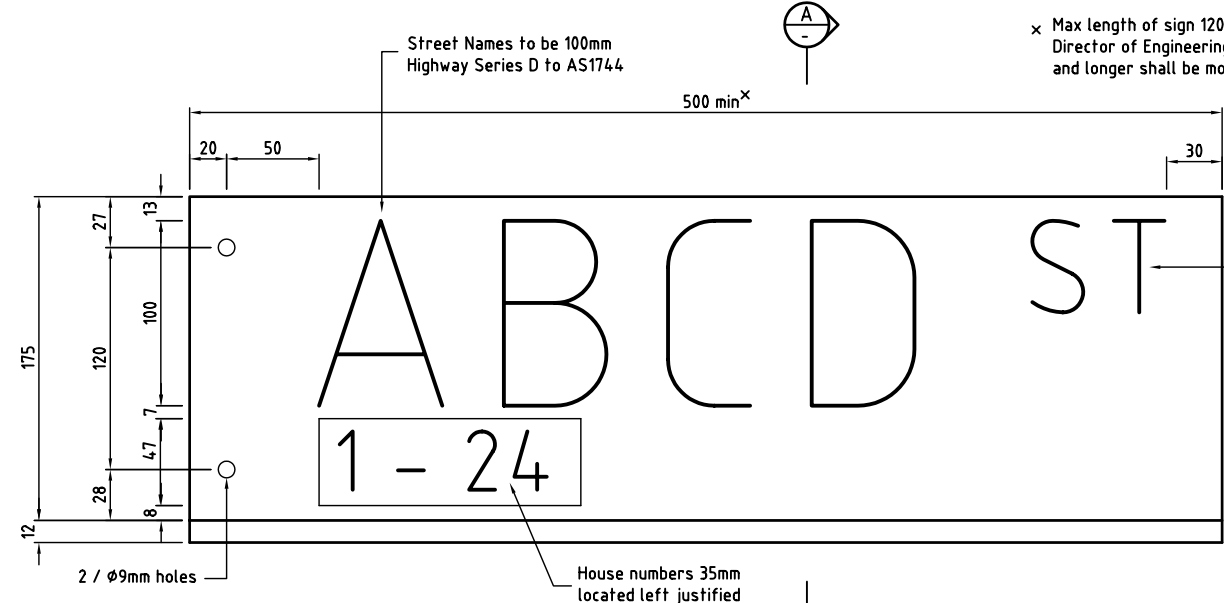
ELEVATION
1:10



POSITION DETAIL
1:10



SECTION A - A
1:2



NAME PLATE
1:2

Notes:
This plan to be read in conjunction with Manual of Uniform Traffic Control Devices Part 5 - Street Name and Community Facility Name Signs.

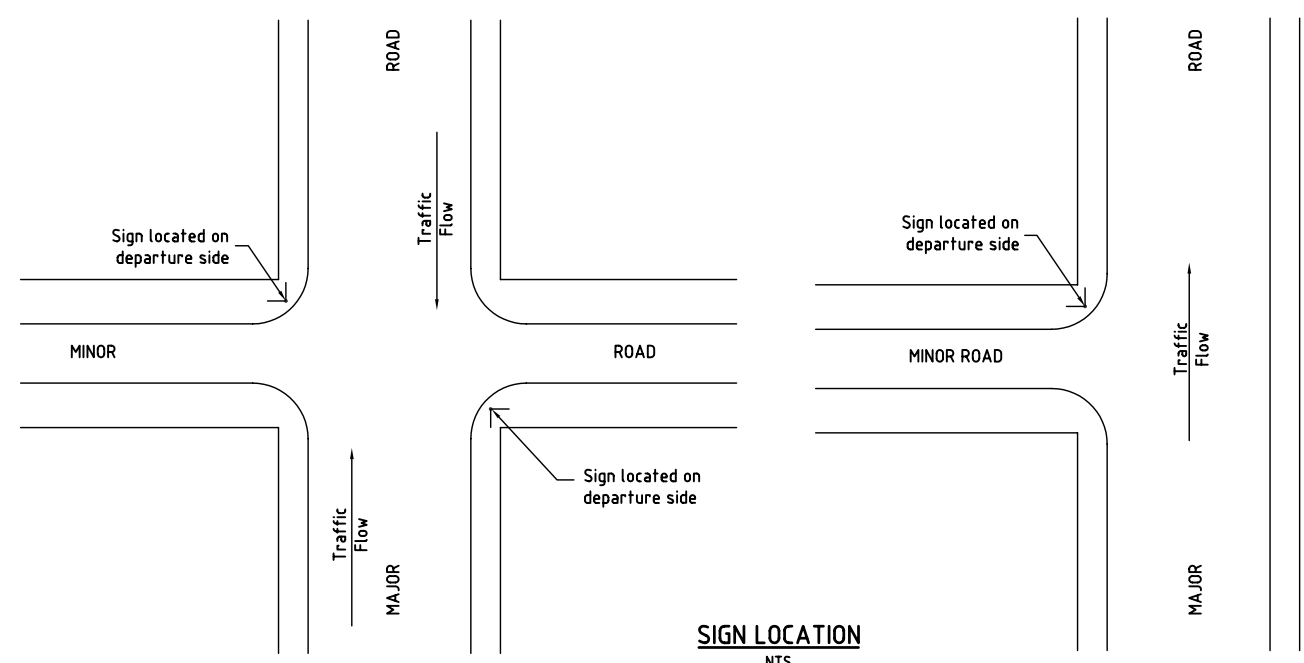
Colours:
Street Names shall have a white legend on a green background. House numbers shall have a green legend on a white background. Legend and background shall be Class 1 retroreflective material as specified in AS1906 Part 1.

Bracket:
Two-piece marine grade aluminium bracket suitable for mounting 187mm deep signs on 60.3mm O.D. posts.

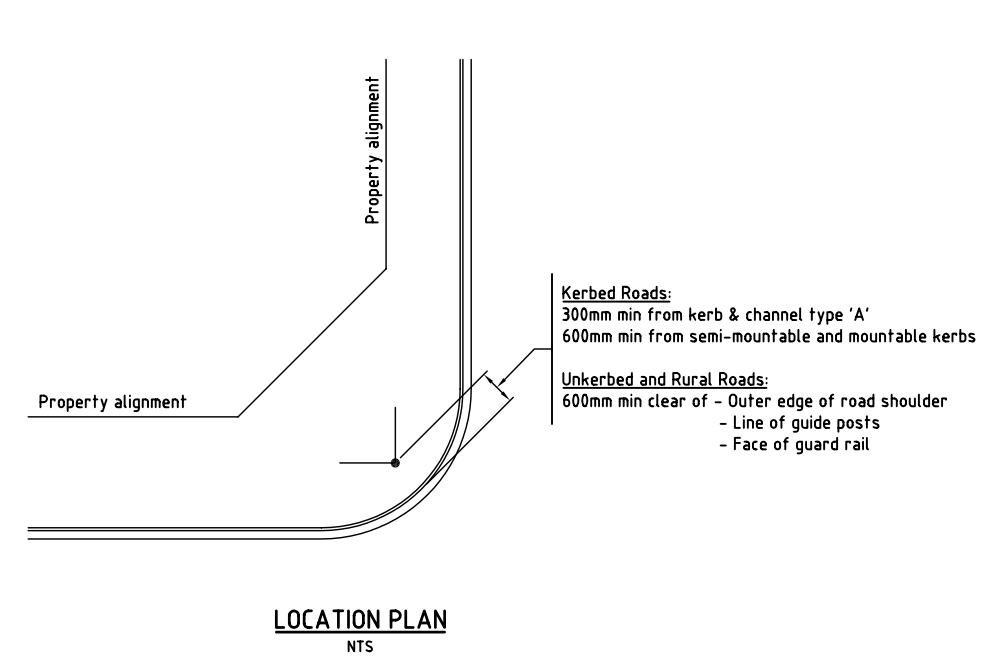
Name Plate:
The name plate shall be an approved aluminium extrusion nom. 187mm deep and beaded on bottom edge only.

Central Business District
Different arrangements apply.

DISPLAY PURPOSES ONLY

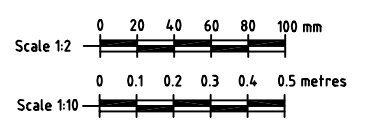


SIGN LOCATION
NTS



LOCATION PLAN
NTS

ZONE	REF.	REVISIONS	BY	CKD.	DATE
B		Redrawn to incorporate latest standards	EJC	GRP	25/3/03
A		Redrawn to incorporate latest standards	GRP		9/9/92



ASSOCIATED DRAWINGS	
LEVEL DATUM	SV INDEX NO.
ERGON	TELSTRA

CITIWORKS TOWNSVILLE	
APPROVED	DES. DCL
original signed by R. Plant 16/05/03	DRN. EJC
MANAGER - CITIWORKS	CHK. GRP
original signed by J. Teague 30/04/03	SD. GRP
OPERATIONS ENGINEER	ENG. RCC

ROADWORKS - STANDARDS STREET NAME SIGN			
DATE	SCALE	DRAWING NO.	A1
25/3/03	As shown	13817 B	