



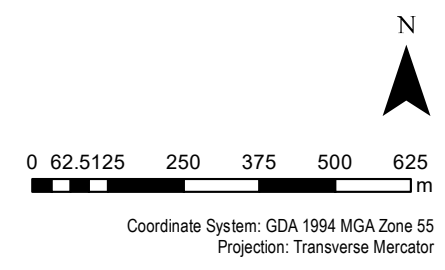
## **Appendix K Habitat Mapping**



# Plan 1A: Habitat Map - Black-throated Finch (southern)



- Legend**
- Known Species Records within 100 km (ALA and Wildnet)
  - QPM sightings
  - Evolve sightings (Oct 2022)
  - Evolve sightings (Feb 2023)
  - LEIP Enabling Infrastructure R9
- Black-throated Finch habitat mapping (Evolve)
- Breeding and Foraging
  - Foraging



Source: Esri, Maxar, GeoEye, Earthstar Geographics, CNES/Airbus DS, USDA, USGS, AeroGRID, IGN, and the GIS User Community



Issue	Date	Description	Drawn	Checked
A	28/02/2023	Preliminary	AL	AH

## Lansdown Eco-Industrial Precinct

Date: 28/02/2023  
Plan 1A BTF habitat Lansdown C



# Plan 1B: Habitat Map - Black-throated Finch (southern)



**Legend**

- Known Species Records within 100 km (ALA and Wildnet)
- QPM sightings
- Evolve sightings (Oct 2022)
- Evolve sightings (Feb 2023)
- LEIP Enabling Infrastructure R9

Black-throated Finch habitat mapping (Evolve)

- Breeding and Foraging
- Foraging

N  
▲

0 75 150 300 450 600 750 m

Coordinate System: GDA 1994 MGA Zone 55  
Projection: Transverse Mercator

Source: Esri, Maxar, GeoEye, Earthstar Geographics, CNES/Airbus DS, USDA, USGS, AeroGRID, IGN, and the GIS User Community



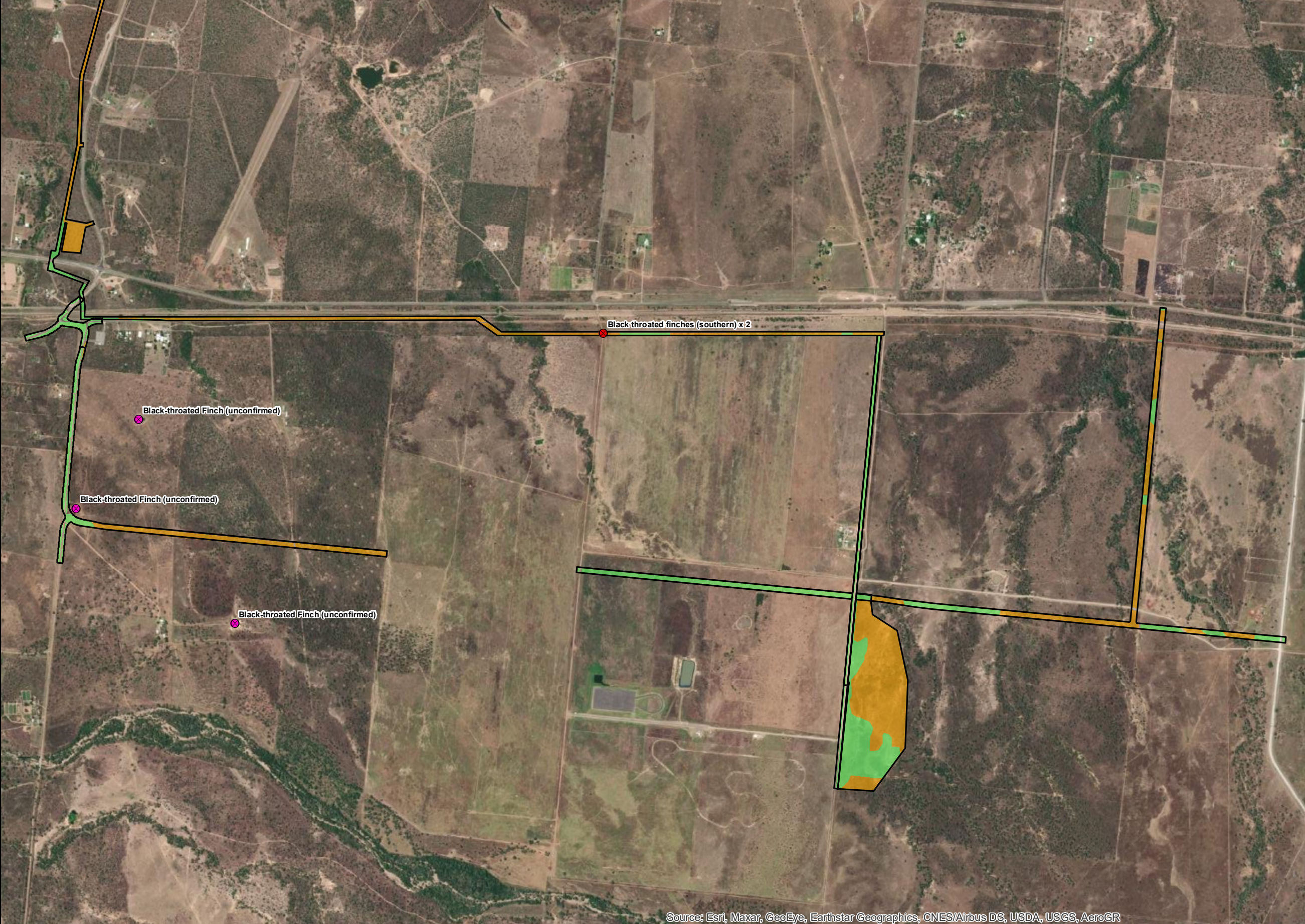
Issue	Date	Description	Drawn	Checked
A	28/02/2023	Preliminary	AL	AH

## Lansdown Eco-Industrial Precinct

Date: 28/02/2023  
Plan 1B BTF habitat Lansdown C



# Plan 1C: Habitat Map - Black-throated Finch (southern)



**Legend**

- Known Species Records within 100 km (ALA and Wildnet)
- ✕ QPM sightings
- Evolve sightings (Oct 2022)
- Evolve sightings (Feb 2023)
- LEIP Enabling Infrastructure R9

Black-throated Finch habitat mapping (Evolve)

- Breeding and Foraging
- Foraging

N

0 100 200 400 600 800 1,000 m

Coordinate System: GDA 1994 MGA Zone 55  
Projection: Transverse Mercator

Source: Esri, Maxar, GeoEye, Earthstar Geographics, CNES/Airbus DS, USDA, USGS, AeroGR



Issue	Date	Description	Drawn	Checked
A	28/02/2023	Preliminary	AL	AH

## Lansdown Eco-Industrial Precinct

Date: 28/02/2023  
Plan 1C BTF habitat Lansdown C

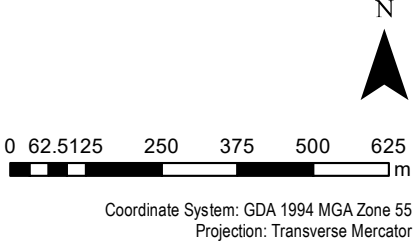


# Plan 2A: Habitat Map - Squatter Pigeon (southern)



- Legend**
- Known Species Records within 100 km (ALA and Wildnet)
  - QPM sightings
  - Evolve sightings (Oct 2022)
  - Evolve sightings (Feb 2023)
  - LEIP Enabling Infrastructure R9

- Squatter pigeon habitat mapping  
Evolve
- Breeding
  - Foraging
  - Dispersal



Source: Esri, Maxar, GeoEye, Earthstar Geographics, CNES/Airbus DS, USDA, USGS, AeroGRID, IGN, and the GIS User Community



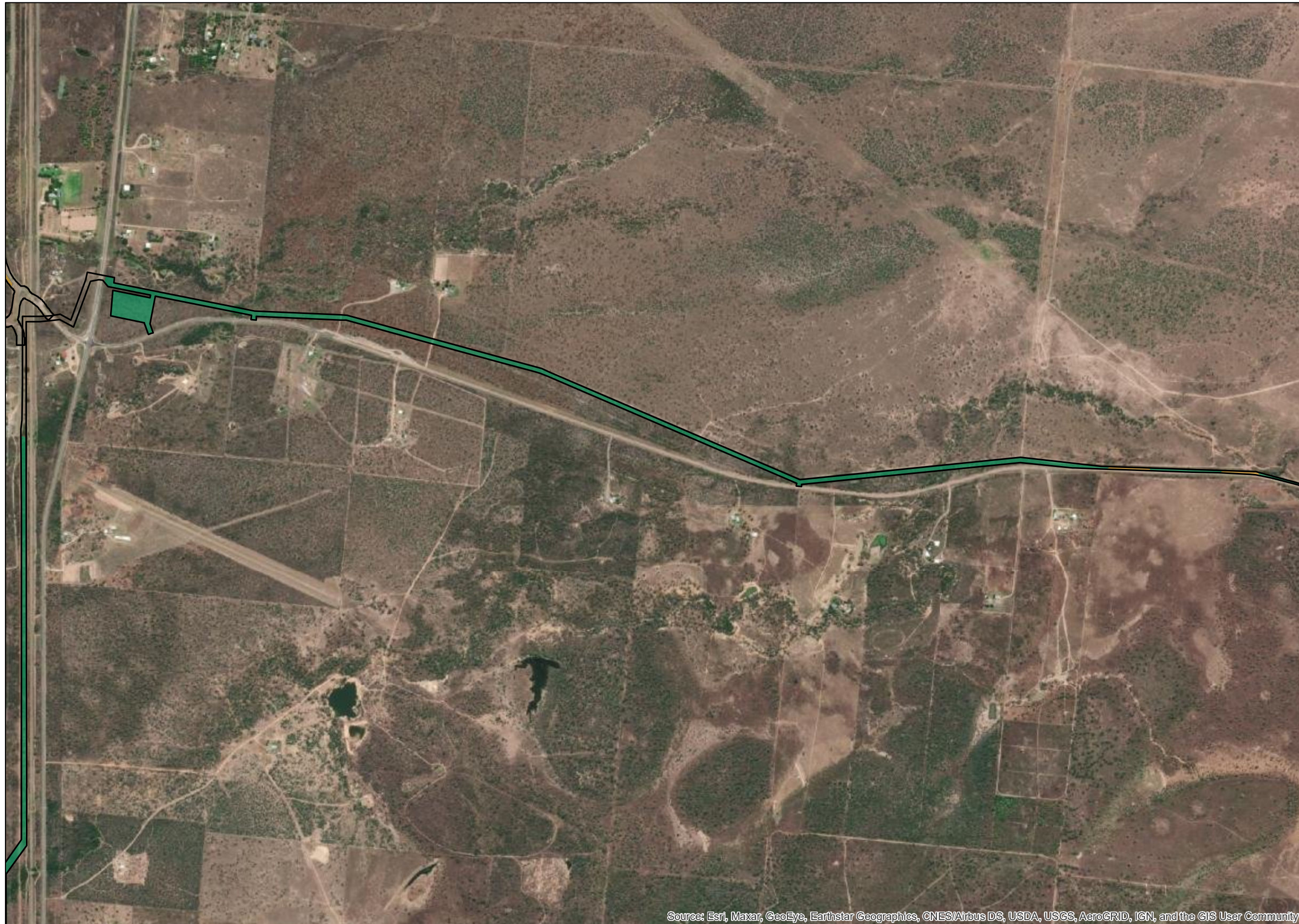
Issue	Date	Description	Drawn	Checked
A	28/02/2023	Preliminary	AL	AH

## Lansdown Eco-Industrial Precinct

Date: 28/02/2023  
Plan 2A SP habitat Lansdown C



# Plan 2B: Habitat Map - Squatter Pigeon (southern)

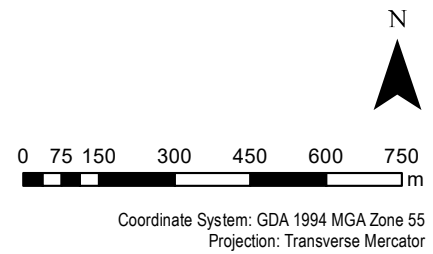


**Legend**

- Known Species Records within 100 km (ALA and Wildnet)
- QPM sightings
- Evolve sightings (Oct 2022)
- Evolve sightings (Feb 2023)
- LEIP Enabling Infrastructure R9

Squatter pigeon habitat mapping (Evolve)

- Breeding
- Foraging
- Dispersal



Source: Esri, Maxar, GeoEye, Earthstar Geographics, CNES/Airbus DS, USDA, USGS, AeroGRID, IGN, and the GIS User Community



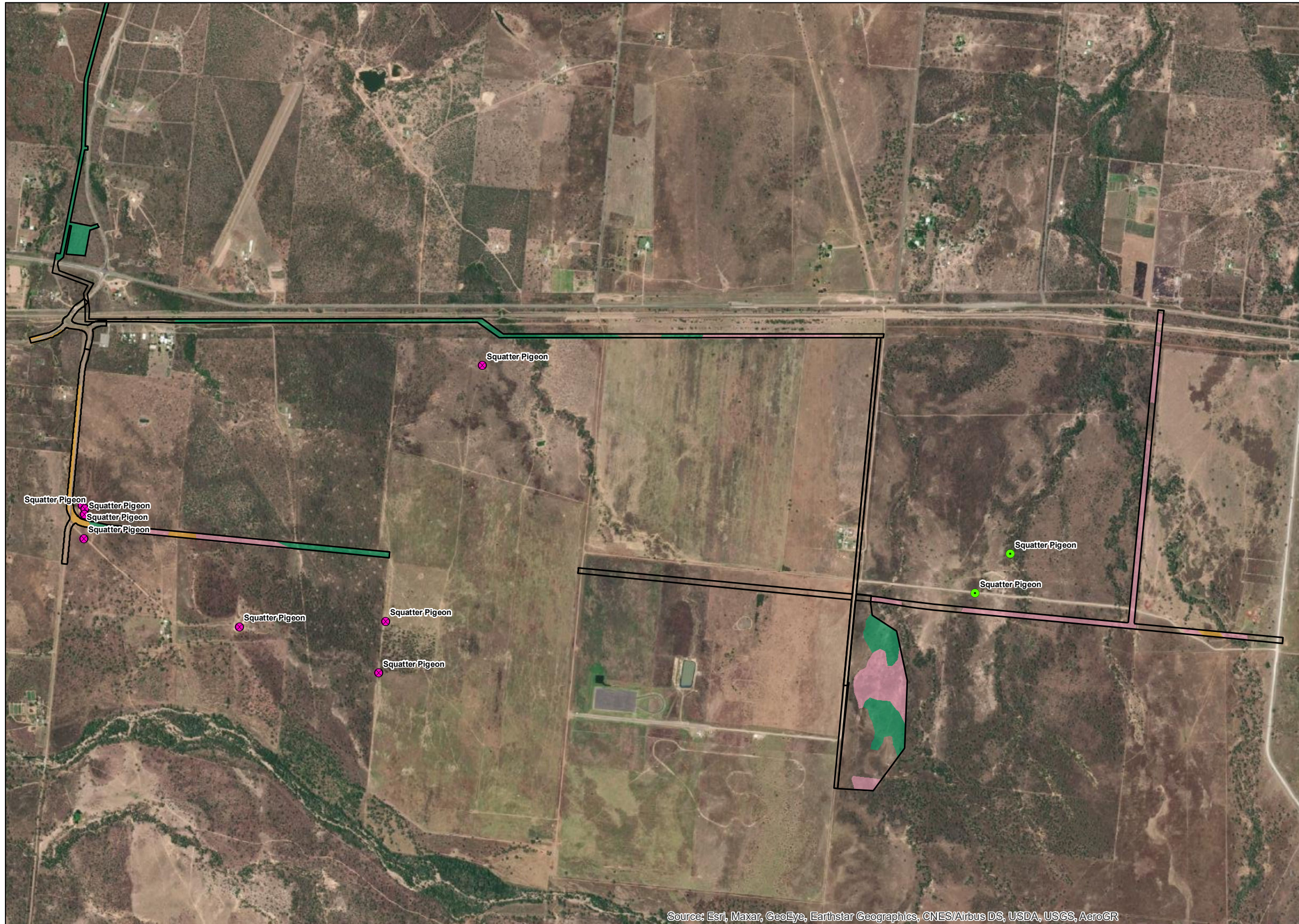
Issue	Date	Description	Drawn	Checked
A	28/02/2023	Preliminary	AL	AH

## Lansdown Eco-Industrial Precinct

Date: 28/02/2023  
Plan 2B SP habitat Lansdown C



# Plan 2C: Habitat Map - Squatter Pigeon (southern)



**Legend**

- Known Species Records within 100 km (ALA and Wildnet)
- ✕ QPM sightings
- Evolve sightings (Oct 2022)
- Evolve sightings (Feb 2023)
- LEIP Enabling Infrastructure R9

Squatter pigeon habitat mapping  
Evolve

- Breeding
- Foraging
- Dispersal

N

0 100 200 400 600 800 1,000 m

Coordinate System: GDA 1994 MGA Zone 55  
Projection: Transverse Mercator

Source: Esri, Maxar, GeoEye, Earthstar Geographics, CNES/Airbus DS, USDA, USGS, AeroGR



Issue	Date	Description	Drawn	Checked
A	28/02/2023	Preliminary	AL	AH

## Lansdown Eco-Industrial Precinct

Date: 28/02/2023  
Plan 2C SP habitat Lansdown C



# Plan 3A: Habitat Map - Koala



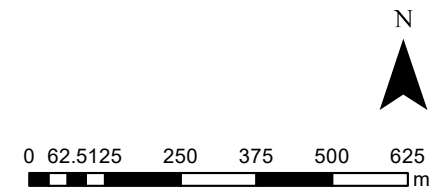
## Legend

- Known Species Records within 100 km (ALA and Wildnet)
- QPM sightings
- Evolve sightings (Oct 2022)
- Evolve sightings (Feb 2023)

— LEIP Enabling Infrastructure R9

Koala habitat mapping (Evolve)

Habitat



Coordinate System: GDA 1994 MGA Zone 55  
Projection: Transverse Mercator

Source: Esri, Maxar, GeoEye, Earthstar Geographics, CNES/Airbus DS, USDA, USGS, AeroGRID, IGN, and the GIS User Community



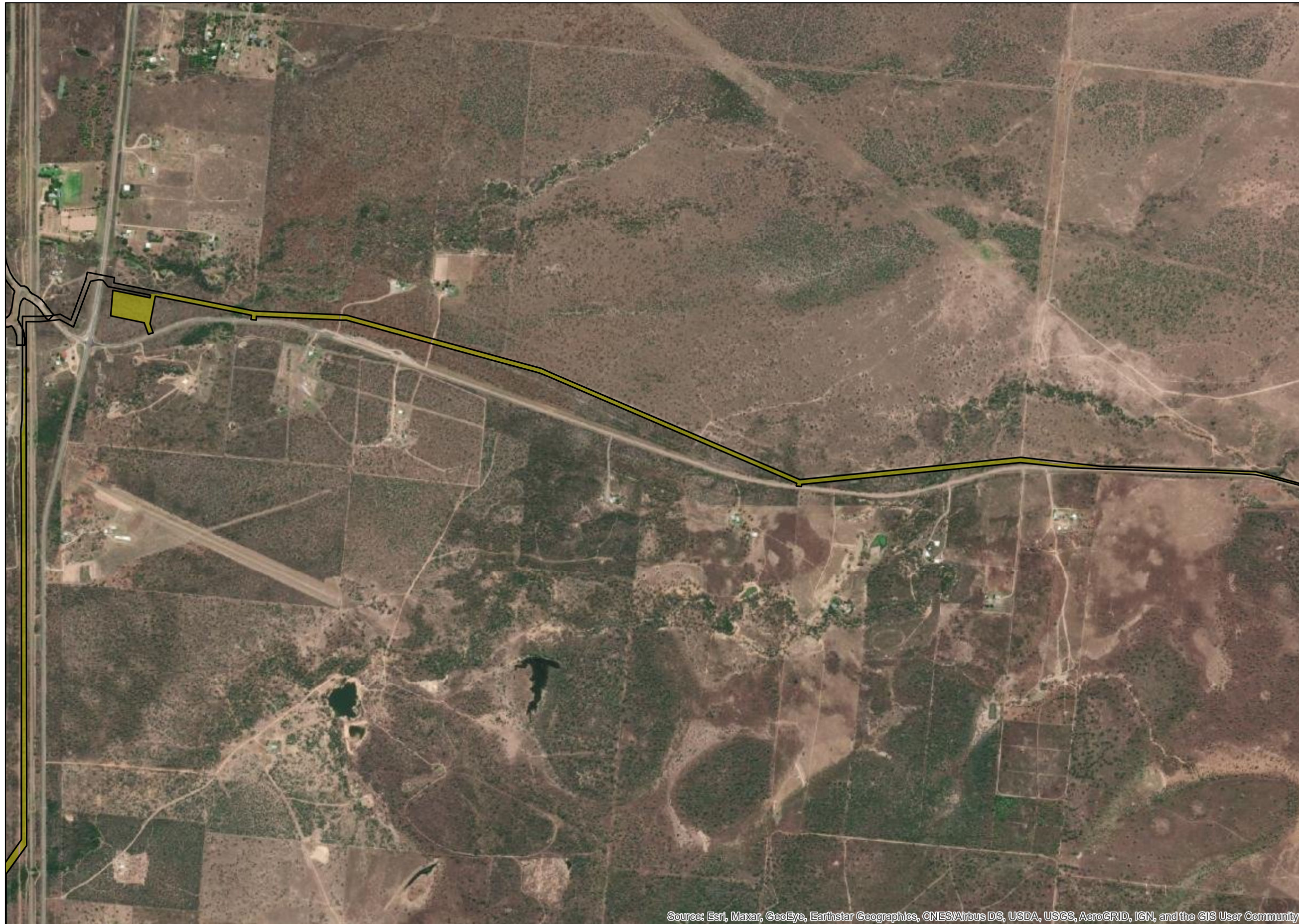
Issue	Date	Description	Drawn	Checked
A	28/02/2023	Preliminary	AL	AH

## Lansdown Eco-Industrial Precinct

Date: 28/02/2023  
Plan 3A Koala habitat Lansdown C



# Plan 3B: Habitat Map - Koala



## Legend

- Known Species Records within 100 km (ALA and Wildnet)
- ✕ QPM sightings
- Evolve sightings (Oct 2022)
- Evolve sightings (Feb 2023)

—— LEIP Enabling Infrastructure R9

Koala habitat mapping (Evolve)

Habitat



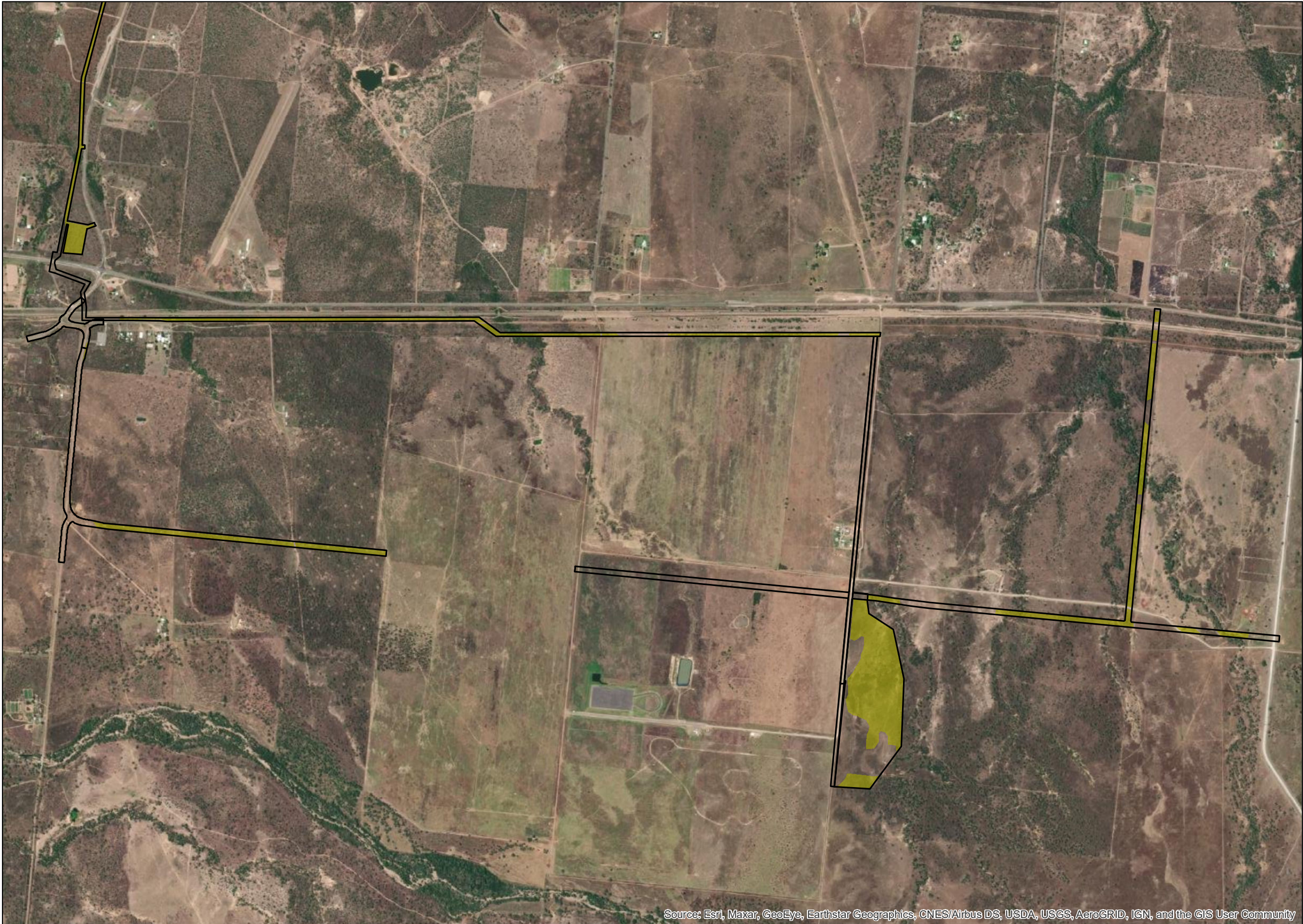
0 75 150 300 450 600 750 m

Coordinate System: GDA 1994 MGA Zone 55  
Projection: Transverse Mercator

Source: Esri, Maxar, GeoEye, Earthstar Geographics, CNES/Airbus DS, USDA, USGS, AeroGRID, IGN, and the GIS User Community



# Plan 3C: Habitat Map - Koala



**Legend**

- Known Species Records within 100 km (ALA and Wildnet)
- QPM sightings
- Evolve sightings (Oct 2022)
- Evolve sightings (Feb 2023)
- LEIP Enabling Infrastructure R9

Koala habitat mapping (Evolve)

- Habitat

N

0 100 200 400 600 800 1,000 m

Coordinate System: GDA 1994 MGA Zone 55  
Projection: Transverse Mercator

Source: Esri, Maxar, GeoEye, Earthstar Geographics, CNES/Airbus DS, USDA, USGS, AeroGRID, IGN, and the GIS User Community



Issue	Date	Description	Drawn	Checked
A	28/02/2023	Preliminary	AL	AH

## Lansdown Eco-Industrial Precinct

Date: 28/02/2023  
Plan 3C Koala habitat Lansdown C



# Plan 4A: Habitat Map - Oriental Cuckoo



**Legend**

- Known Species Records within 100 km (ALA and Wildnet)
- QPM sightings
- Evolve sightings (Oct 2022)
- Evolve sightings (Feb 2023)
- LEIP Enabling Infrastructure R9

Oriental Cuckoo habitat mapping (Evolve)

- Habitat

N  
▲

0 62.5 125 250 375 500 625 m

Coordinate System: GDA 1994 MGA Zone 55  
Projection: Transverse Mercator

Source: Esri, Maxar, GeoEye, Earthstar Geographics, CNES/Airbus DS, USDA, USGS, AeroGRID, IGN, and the GIS User Community



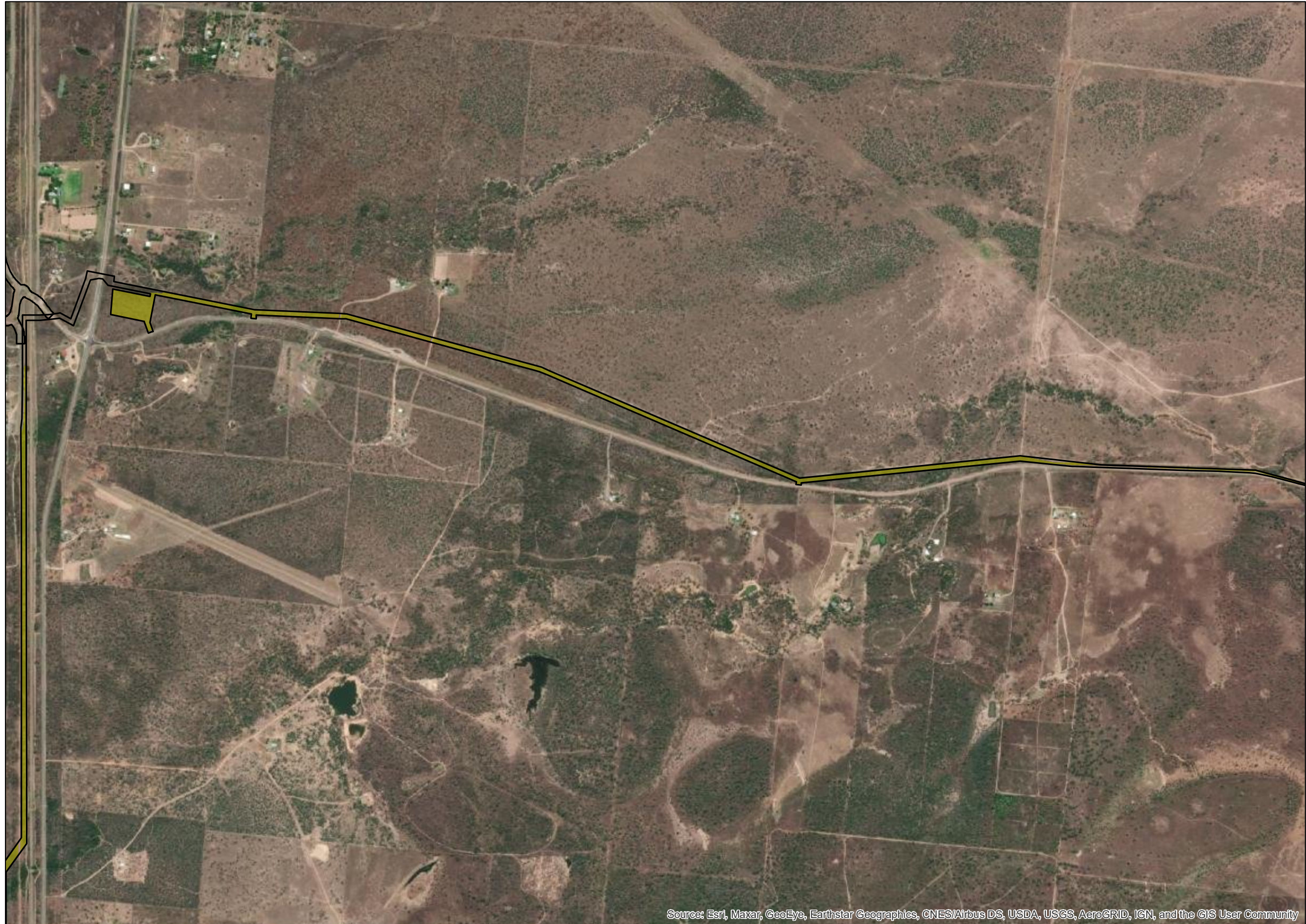
Issue	Date	Description	Drawn	Checked
A	28/02/2023	Preliminary	AL	AH

## Lansdown Eco-Industrial Precinct

Date: 28/02/2023  
Plan 4A OC habitat Lansdown C

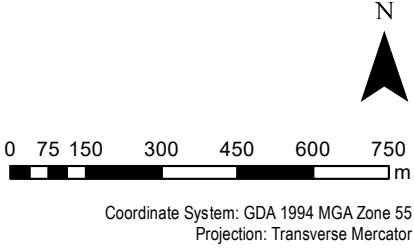


# Plan 4B: Habitat Map - Oriental Cuckoo



**Legend**

- Known Species Records within 100 km (ALA and Wildnet)
- QPM sightings
- Evolve sightings (Oct)
- Evolve sightings (Feb)
- LEIP Enabling Infrastructure R9
- Oriental Cuckoo habitat mapping (Evolve)
- Habitat



Source: Esri, Maxar, GeoEye, Earthstar Geographics, CNES/Airbus DS, USDA, USGS, AeroGRID, IGN, and the GIS User Community



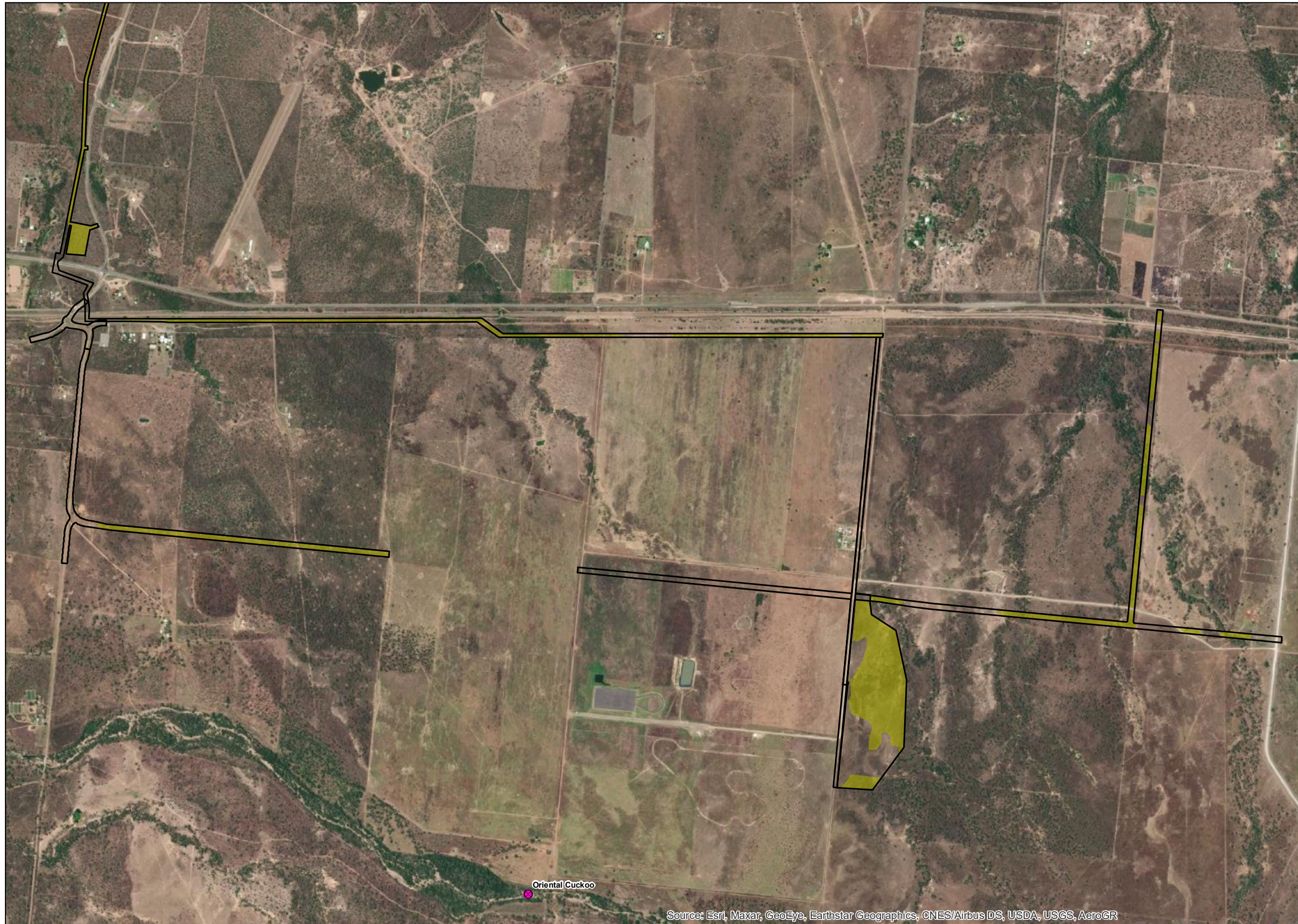
Issue	Date	Description	Drawn	Checked
A	28/02/2023	Preliminary	AL	AH

## Lansdown Eco-Industrial Precinct

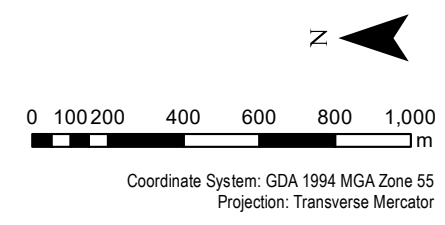
Date: 28/02/2023  
Plan 4B OC habitat Lansdown C



# Plan 4C: Habitat Map - Oriental Cuckoo



- Legend**
- Known Species Records within 100 km (ALA and Wildnet)
  - ✕ QPM sightings
  - Evolve sightings (Oct 2022)
  - Evolve sightings (Feb 2023)
  - LEIP Enabling Infrastructure R9
- Oriental Cuckoo habitat mapping (Evolve)
- Habitat



Oriental Cuckoo

Source: Esri, Maxar, GeoEye, Earthstar Geographics, CNES/Airbus DS, USDA, USGS, AeroGR



Issue	Date	Description	Drawn	Checked
A	28/02/2023	Preliminary	AL	AH

## Lansdown Eco-Industrial Precinct

Date: 28/02/2023  
Plan 4C OC habitat Lansdown C



# Plan 5A: Habitat Map - Northern Quoll

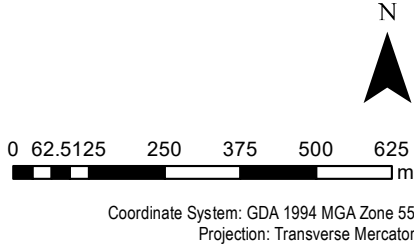


**Legend**

- Known Species Records within 100 km (ALA and Wildnet)
- QPM sightings
- Evolve sightings (Oct 2022)
- Evolve sightings (Feb 2023)
- LEIP Enabling Infrastructure R9
- ✕ Edge of intact habitat point
- Intact habitat 4km buffer

Northern Quoll habitat mapping (Evolve)

- Foraging



Source: Esri, Maxar, GeoEye, Earthstar Geographics, CNES/Airbus DS, USDA, USGS, AeroGRID, IGN, and the GIS User Community



Issue	Date	Description	Drawn	Checked
A	28/02/2023	Preliminary	AL	AH

## Lansdown Eco-Industrial Precinct

Date: 28/02/2023  
Plan 5A NQ habitat Lansdown C



# Plan 6A: Habitat Map - Australian Painted Snipe



**Legend**

- Known Species Records within 100 km (ALA and Wildnet)
- QPM sightings
- Evolve sightings (Oct 2022)
- Evolve sightings (Feb 2023)
- LEIP Enabling Infrastructure R9

Australian Painted Snipe habitat mapping (Evolve)

- Foraging



N

0 40 80 160 240 320 400 m

Coordinate System: GDA 1994 MGA Zone 55  
Projection: Transverse Mercator

Source: Esri, Maxar, GeoEye, Earthstar Geographics, CNES/Airbus DS, USDA, USGS, AeroGRID, IGN, and the GIS User Community



Issue	Date	Description	Drawn	Checked
A	28/02/2023	Preliminary	AL	AH

## Lansdown Eco-Industrial Precinct

Date: 28/02/2023  
Plan 6A APS habitat Lansdown C



# Plan 7A: Habitat Map - Curlew Sandpiper




**Legend**

- Known Species Records within 100 km (ALA and Wildnet)
- QPM sightings
- Evolve sightings (Oct 2022)
- Evolve sightings (Feb 2023)
- LEIP Enabling Infrastructure R9

Curlew Sandpiper habitat mapping (Evolve)

- Habitat

N



0 40 80 160 240 320 400 m

Coordinate System: GDA 1994 MGA Zone 55  
Projection: Transverse Mercator

Source: Esri, Maxar, GeoEye, Earthstar Geographics, CNES/Airbus DS, USDA, USGS, AeroGRID, IGN, and the GIS User Community



Issue	Date	Description	Drawn	Checked
A	28/02/2023	Preliminary	AL	AH

## Lansdown Eco-Industrial Precinct

Date: 28/02/2023  
Plan 7A CS habitat Lansdown C



# Plan 8A: Habitat Map - Bare-rumped Sheathtail Bat



**Legend**

- Known Species Records within 100 km (ALA and Wildnet)
- QPM sightings
- Evolve sightings (Oct 2022)
- Evolve sightings (Feb 2023)
- LEIP Enabling Infrastructure R9

**Bare-rumped Sheathtail Bat habitat mapping (Evolve)**

- Roosting (see arrows for locations)
- Foraging

N

0 62.5 125 250 375 500 625 m

Coordinate System: GDA 1994 MGA Zone 55  
Projection: Transverse Mercator

Source: Esri, Maxar, GeoEye, Earthstar Geographics, CNES/Airbus DS, USDA, USGS, AeroGRID, IGN, and the GIS User Community



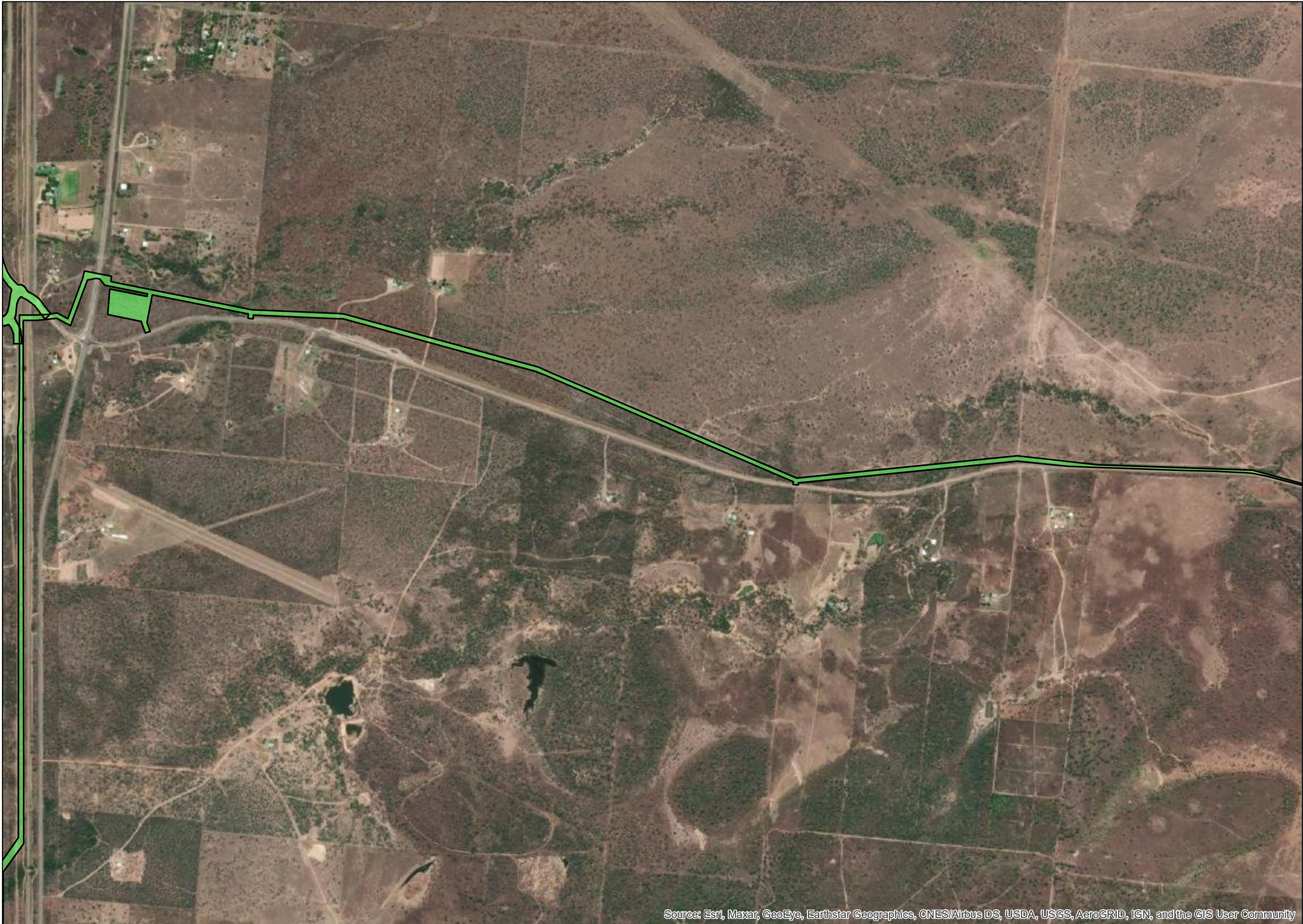
Issue	Date	Description	Drawn	Checked
A	28/02/2023	Preliminary	AL	AH

## Lansdown Eco-Industrial Precinct

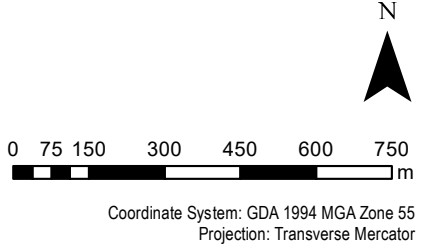
Date: 28/02/2023  
Plan 8A BRSB habitat Lansdown C



# Plan 8B: Habitat Map - Bare-rumped Sheathtail Bat



- Legend**
- Known Species Records within 100 km (ALA and Wildnet)
  - QPM sightings
  - Evolve sightings (Oct 2022)
  - Evolve sightings (Feb 2023)
  - LEIP Enabling Infrastructure R9
- Bare-rumped Sheathtail Bat habitat mapping (Evolve)
- Roosting (see arrows for locations)
  - Foraging



Source: Esri, Maxar, GeoEye, Earthstar Geographics, CNES/Airbus DS, USDA, USGS, AeroGRID, IGN, and the GIS User Community



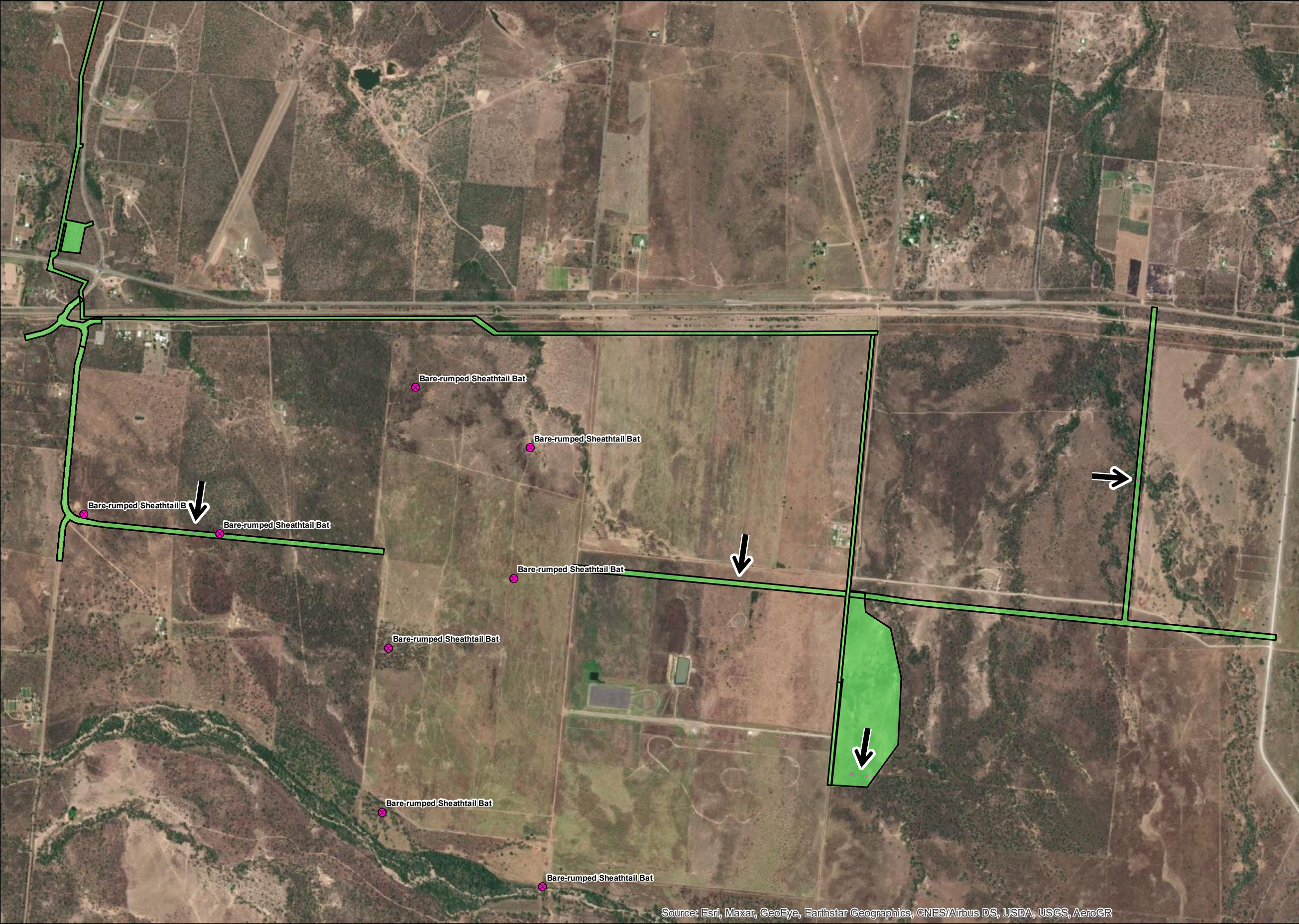
Issue	Date	Description	Drawn	Checked
A	28/02/2023	Preliminary	AL	AH

## Lansdown Eco-Industrial Precinct

Date: 28/02/2023  
Plan 8B BRSB habitat Lansdown C



# Plan 8C: Habitat Map - Bare-rumped Sheathtail Bat



**Legend**

- Known Species Records within 100 km (ALA and Wildnet)
- ✕ QPM sightings
- Evolve sightings (Oct 2022)
- Evolve sightings (Feb 2023)
- LEIP Enabling Infrastructure R9

Bare-rumped Sheathtail Bat habitat mapping (Evolve)

- Roosting (see arrows for locations)
- Foraging

N

0 100 200 400 600 800 1,000 m

Coordinate System: GDA 1994 MGA Zone 55  
Projection: Transverse Mercator

Source: Esri, Maxar, GeoEye, Earthstar Geographics, CNES/Airbus DS, USDA, USGS, AeroGR



Issue	Date	Description	Drawn	Checked
A	28/02/2023	Preliminary	AL	AH

## Lansdown Eco-Industrial Precinct

Date: 28/02/2023  
Plan 8C BRSB habitat Lansdown C

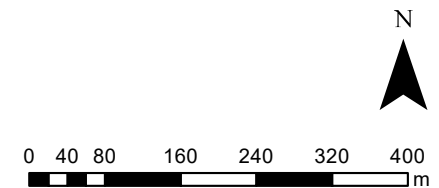


# Plan 9A: Habitat Map - Glossy Ibis



## Legend

- Known Species Records within 100 km (ALA and Wildnet)
  - ✕ QPM sightings
  - Evolve sightings (Oct 2022)
  - Evolve sightings (Feb 2023)
  - LEIP Enabling Infrastructure R9
- Glossy Ibis habitat mapping (Evolve)
- Habitat



Coordinate System: GDA 1994 MGA Zone 55  
Projection: Transverse Mercator

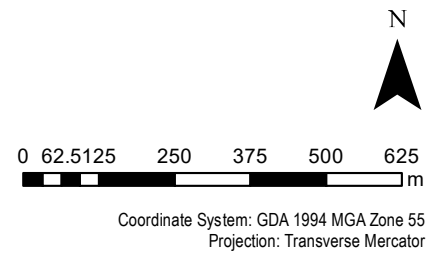
Source: Esri, Maxar, GeoEye, Earthstar Geographics, CNES/Airbus DS, USDA, USGS, AeroGRID, IGN, and the GIS User Community



# Plan 10A: Habitat Map - Black-faced Monarch



- Legend**
- Known Species Records within 100 km (ALA and Wildnet)
  - QPM sightings
  - Evolve sightings (Oct 2022)
  - Evolve sightings (Feb 2023)
  - LEIP Enabling Infrastructure R9
- Black-faced Monarch FM habitat mapping (Evolve)
- Habitat



Source: Esri, Maxar, GeoEye, Earthstar Geographics, CNES/Airbus DS, USDA, USGS, AeroGRID, IGN, and the GIS User Community



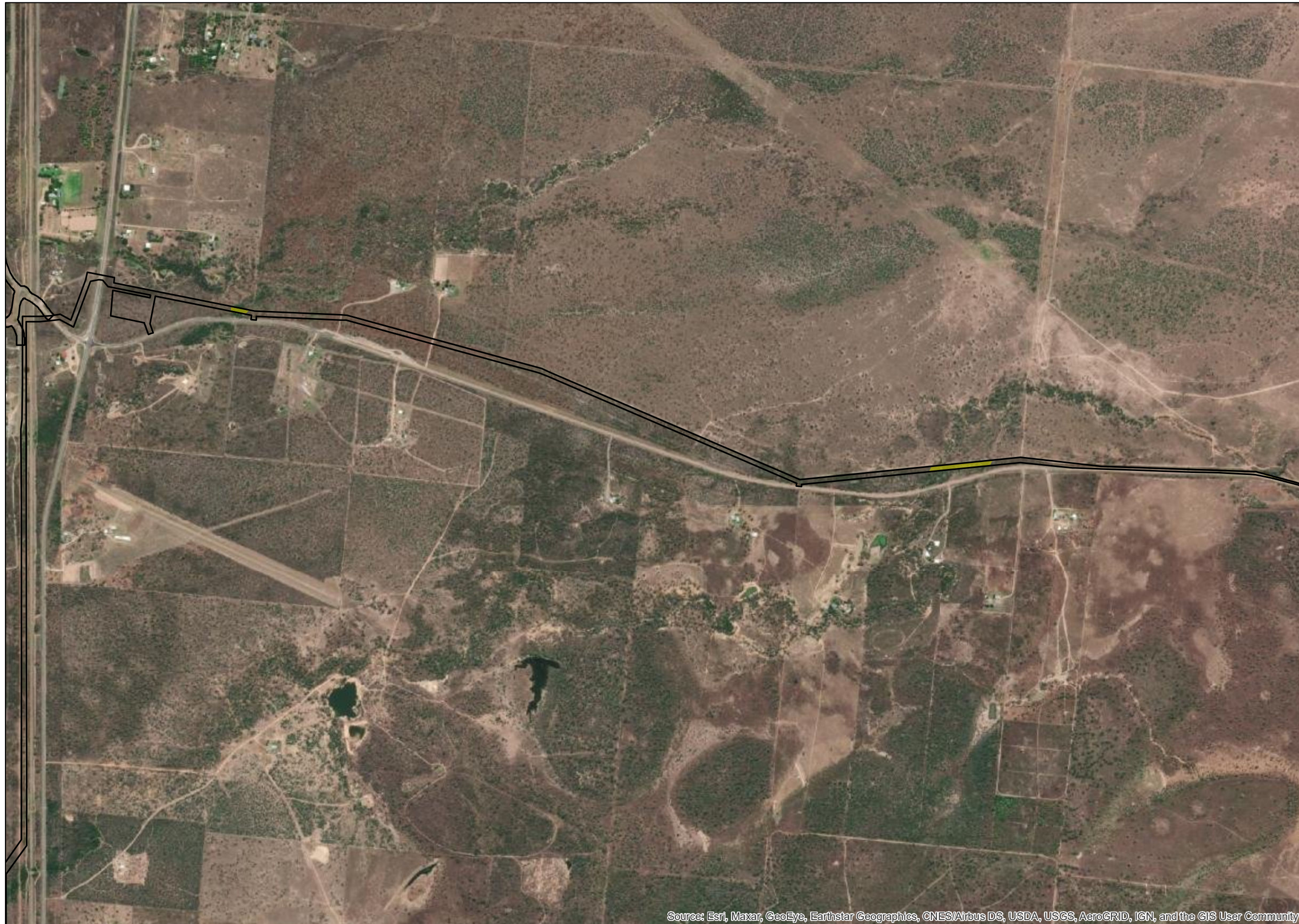
Issue	Date	Description	Drawn	Checked
A	28/02/2023	Preliminary	AL	AH

## Lansdown Eco-Industrial Precinct

Date: 28/02/2023  
Plan 10A BFM habitat Lansdown C



# Plan 10B: Habitat Map - Black-faced Monarch



**Legend**

- Known Species Records within 100 km (ALA and Wildnet)
- QPM sightings
- Evolve sightings (Oct 2022)
- Evolve sightings (Feb 2023)
- LEIP Enabling Infrastructure R9

Black-faced Monarch FM habitat mapping (Evolve)

- Habitat

N  
▲

0 75 150 300 450 600 750 m

Coordinate System: GDA 1994 MGA Zone 55  
Projection: Transverse Mercator

Source: Esri, Maxar, GeoEye, Earthstar Geographics, CNES/Airbus DS, USDA, USGS, AeroGRID, IGN, and the GIS User Community



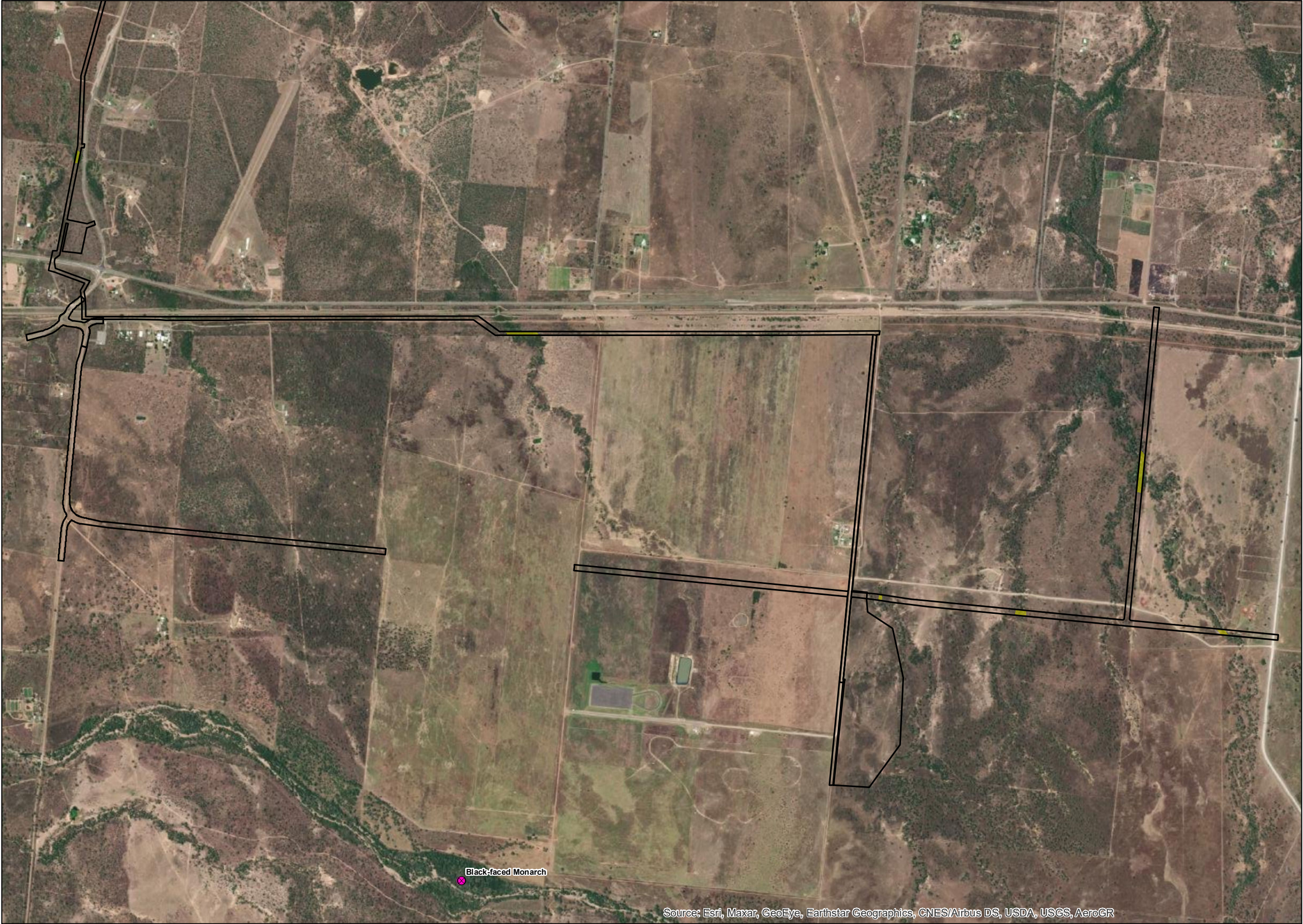
Issue	Date	Description	Drawn	Checked
A	28/02/2023	Preliminary	AL	AH

## Lansdown Eco-Industrial Precinct

Date: 28/02/2023  
Plan 10B BFM habitat Lansdown C



# Plan 10C: Habitat Map - Black-faced Monarch



**Legend**

- Known Species Records within 100 km (ALA and Wildnet)
- ✕ QPM sightings
- Evolve sightings (Oct 2022)
- Evolve sightings (Feb 2023)
- LEIP Enabling Infrastructure R9

Black-faced Monarch FM habitat mapping (Evolve)

- Habitat

N

0 100 200 400 600 800 1,000  
m

Coordinate System: GDA 1994 MGA Zone 55  
Projection: Transverse Mercator

Source: Esri, Maxar, GeoEye, Earthstar Geographics, CNES/Airbus DS, USDA, USGS, AeroGR



Issue	Date	Description	Drawn	Checked
A	28/02/2023	Preliminary	AL	AH

## Lansdown Eco-Industrial Precinct

Date: 28/02/2023  
Plan 10C BFM habitat Lansdown C