

Use of Recreational Vehicles on Local Roads Policy

Local Law No.1 (Administration) 2011

1. Policy Statement

Townsville City Council (Council) is committed to minimising the risks and maximising the safety of all road users on the local road network and recognises that some residents seek to operate recreational vehicles (eligible for conditional registration) on or across roads in the local government area. However, Council believes that only a limited number of these recreational vehicles have a genuine need to access the road network to fulfil an operational task.

2. Principles

Council fulfils its legal obligation as “road manager” of local roads, in accordance with the relevant legislation and guidelines related to conditional registration, minimising the risks and maximising the safety of all road users.

3. Scope

This policy applies to the operation of recreational vehicles (eligible for conditional registration) on local roads within road reserves in the Townsville local government area only when Council, as the road manager, is required to approve use of these conditional registered vehicles on its local roads.

This policy does not apply to motorised wheelchairs, mobility scooters, motorised scooters or devices known generically as “Segways”.

4. Responsibility

The Chief Executive Officer, Director Infrastructure & Operations, General Manager Engineering & Asset Infrastructure Planning and Team Manager Technical & Asset Planning Civil & Open Space are responsible for ensuring this policy is understood and adhered to by all managers and workers.

5. Definitions

Approved Precinct Area - means precincts 1, 2 and 3 as identified in Appendix A and B of this policy.

Conditional Registration - means a registration scheme for non-standard vehicles that do not comply with the standard regulations for registration of vehicles in Queensland and have a genuine need to access the road network. Vehicles requiring conditional registration must comply with the

Electronic version current uncontrolled copy valid only at time of printing.

Document No. -
Authorised by - Director Infrastructure & Operations
Document Maintained by - Engineering & Asset Infrastructure Planning

Engineering & Asset Infrastructure Planning | Use of Recreational Vehicles on Local Roads Policy

Version No. 4
Initial Date of Adoption (Version No. 1) - 23.09.14
Current Version Reviewed - 04.12.24
Next Review Date - 04.12.28
PAGE 1 OF 5

conditions for use outlined in the Safe Movement Guideline | Conditionally registering a vehicle in Queensland.

Local Road - means a road under the control of local government.

Manager - an individual responsible for overseeing and coordinating specific functions, departments, teams or projects within Townsville City Council.

Operational Task - means work activity undertaken as part of an occupation.

Recreational Vehicle - includes golf buggies, trike bikes, quad bikes, and utility - off-road, or other recreational vehicles as classified by the Department of Transport and Main Roads. The Non-complying Vehicle Catalogue is available on the Department of Transport and Main Roads website at www.tmr.qld.gov.au.

Road - means areas open to the public for use as a road and road-related areas.

Road Manager - means the council officer responsible for the management of the road network and for authorising any approvals under this policy.

Road Reserve - means an area of land under the Council's control, dedicated, notified or declared to be a road for public use. An area may be a road reserve even though it does not need to contain a formed road. The road reserve extends from the property boundary on one side to the property boundary on the other side.

Route Specific - means a specific road or roads.

Workers - includes employees, contractors, volunteers and all others who perform work on behalf of Council.

6. Policy

Council will assess applications for recreational vehicles (eligible for conditional registration), to travel on route specific local roads within road reserves in the local government area, in accordance with the Safe Movement Guideline | Conditionally registering a vehicle in Queensland.

Council does not support applications for recreational vehicles (eligible for conditional registration) to travel on route specific local roads within road reserves in the local government area, except:

- in the approved precinct area;
- if there is a demonstrated genuine need to access the road network to fulfil operational task; or,
- if the application supports a demonstrated cultural purpose.

6.1 Application Process

Applications for the use of recreational vehicles on local roads must be made to Council in writing and include details of:

- the operator's name;
- the operator's address;
- the recreational vehicle registration; and,
- the requested designated travel route.

Electronic version current uncontrolled copy valid only at time of printing.

Document No. -
Authorised by - Director Infrastructure & Operations
Document Maintained by - Engineering & Asset Infrastructure Planning

Engineering & Asset Infrastructure Planning | Use of Recreational Vehicles on Local Roads Policy

Version No. 4
Initial Date of Adoption (Version No. 1) - 23.09.14
Current Version Reviewed - 04.12.24
Next Review Date - 04.12.28
PAGE 2 OF 5

Applications will be assessed by the Infrastructure and Operations team in accordance with this policy. The recreational vehicle is required to have conditional registration through the Department of Transport and Main Roads. The operator may be required to obtain a permit from Queensland Police Service.

Where approval is issued, the applicant will be provided with an approval letter outlining the approved designated travel route. The approval letter must be kept with the recreational vehicle and be produced if requested by an Authorised Officer.

Council reserves the right to withdraw an approval if traffic conditions on the approved designated travel route are changed.

6.2 Breach of Use

Council, at its discretion, will re-assess applications for recreational vehicles when advised of a complaint from members of the public for issues such as (but not exhaustive):

- use of the recreational vehicle outside of approved precinct area;
- use of the recreational vehicle outside of the route specific local roads as defined in the approval letter;
- use of the recreational vehicle outside of daylight hours; or,
- unlawful use of the recreational vehicle within the approved precinct area.

Where necessary, Council will not support renewal of a recreational vehicle approval.

7. Legal Parameters

Local Government Act 2009

Local Law No. 1 (Administration) 2011

Transport Operations (Road Use Management - Vehicle Registration) Regulation 2021

Transport Operations (Road Use Management - Vehicle Standards and Safety) Regulation 2021

Transport Operations (Road Use Management) Act 1995

8. Associated Documents

Safe Movement Guideline | Conditionally registering a vehicle in Queensland

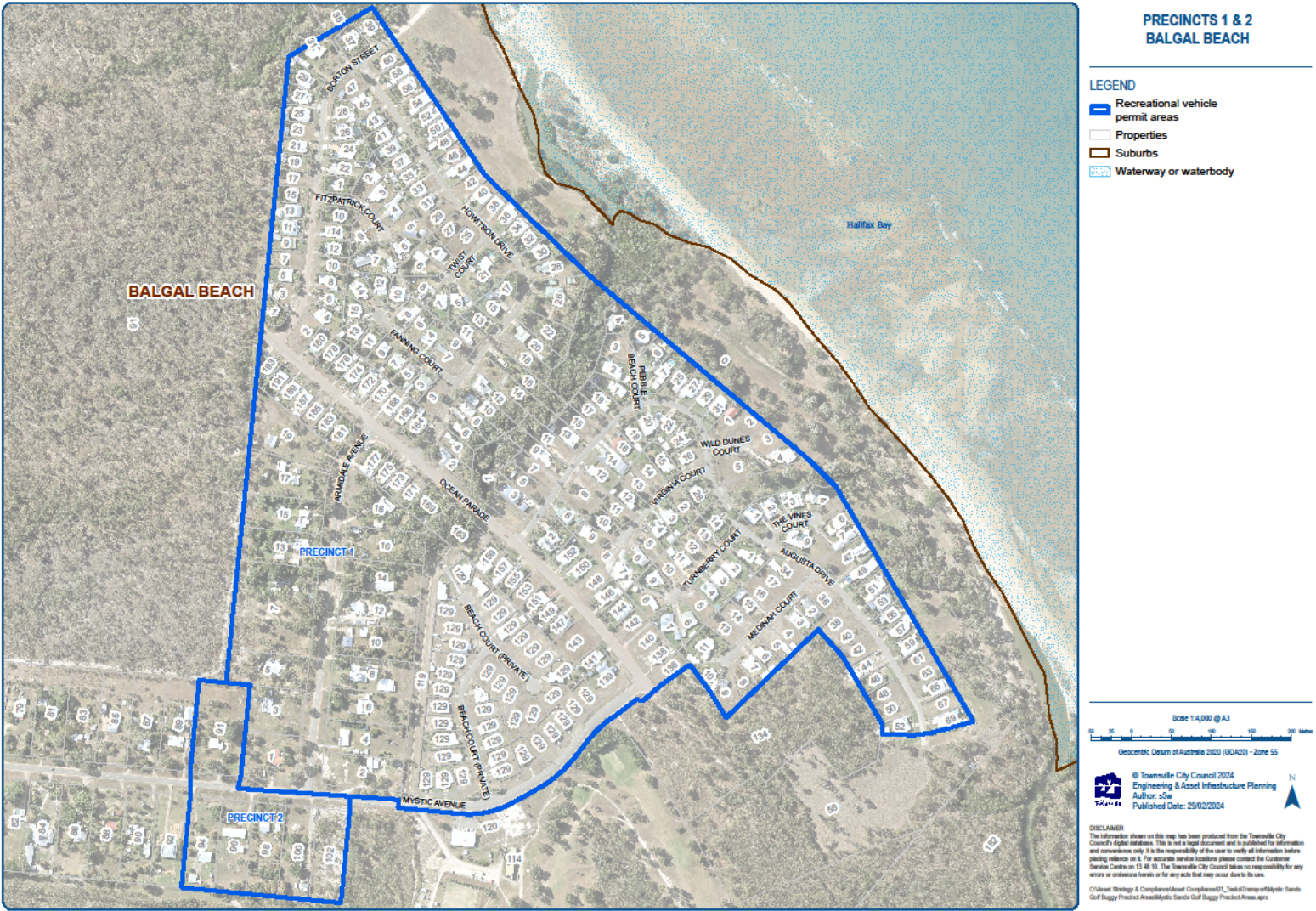
Electronic version current uncontrolled copy valid only at time of printing.

Document No. -
Authorised by - Director Infrastructure & Operations
Document Maintained by - Engineering & Asset Infrastructure Planning

Engineering & Asset Infrastructure Planning | Use of Recreational Vehicles on Local Roads Policy

Version No. 4
Initial Date of Adoption (Version No. 1) - 23.09.14
Current Version Reviewed - 04.12.24
Next Review Date - 04.12.28
PAGE 3 OF 5

Appendix A - Precincts 1 & 2 Balgal Beach



Electronic version current uncontrolled copy valid only at time of printing.

Document No. -
Authorised by - Director Infrastructure & Operations
Document Maintained by - Engineering & Asset Infrastructure Planning

Engineering & Asset Infrastructure Planning | Use of Recreational Vehicles on Local Roads Policy

Version No. 4
Initial Date of Adoption (Version No. 1) - 23.09.14
Current Version Reviewed - 04.12.24
Next Review Date - 04.12.28
PAGE 4 OF 5

PICNIC BAY

NELLY BAY

PRECINCT 3

LEGEND

- Approved recreational vehicle routes
- Recreational vehicle permit areas
- Approved properties
- Properties
- Suburbs

Scale: 1:1000

North Arrow: N

Disclaimer: The information contained in this map has been produced by the Town of Cottesloe and is for general information only. It is not a legal document and should not be used for legal purposes. The Town of Cottesloe is not responsible for any errors or omissions in this map. The Town of Cottesloe is not responsible for any damage or loss resulting from the use of this map. The Town of Cottesloe is not responsible for any damage or loss resulting from the use of this map.

Engineering & Asset Infrastructure Planning | Use of Recreational Vehicles on Local Roads Policy

PAGE 5 OF 5