

Townsville City Council

North & Far North Tropical Low Commencing 29 January 2025

Local Recovery and Resilience Action Plan



Townsville City Council

North & Far North Tropical Low Commencing 29 January 2025

Local Recovery and Resilience Action Plan

Approved by LRRG, TLDMG and Townsville City Council, June 2025.

Recovery Narrative

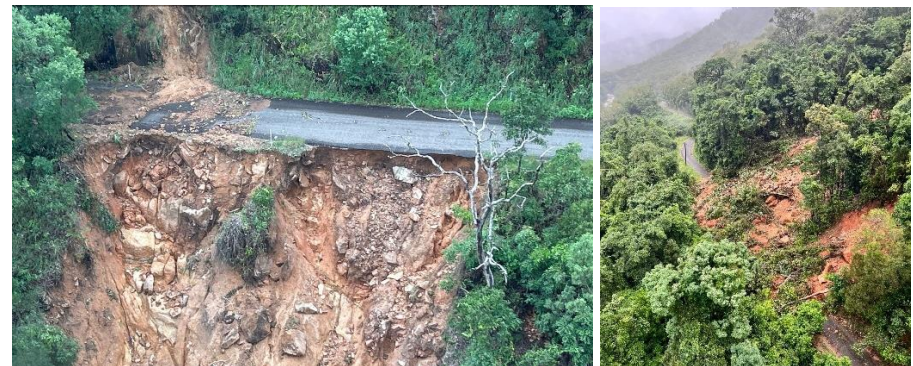
About the Disaster

This Event Specific Local Recovery & Resilience Action Plan (ESLRRAP) outlines the impacts of the declared disaster, known as the North and Far North Tropical Low event, which began on January 29, 2025. This plan captures the effects on infrastructure, the economy, communities, and the environment, providing a comprehensive overview of the challenges faced.

The North and Far North Tropical Monsoon Low event, starting on January 29, 2025, caused record-breaking floods in North and Far North Queensland, affecting communities from Cairns to Mackay and Etheridge. Townsville experienced 16 consecutive days of rain, nearly reaching its annual rainfall in just 1.5 months, with an average of 1.2m of rain. The Ross River Dam received 974mm of rainfall, peaking at 173%, while Paluma Dam received 2300mm. This led to landslides and flash flooding, isolating communities and prompting the evacuation of around 4000 people, with several properties suffering minor to moderate damage.

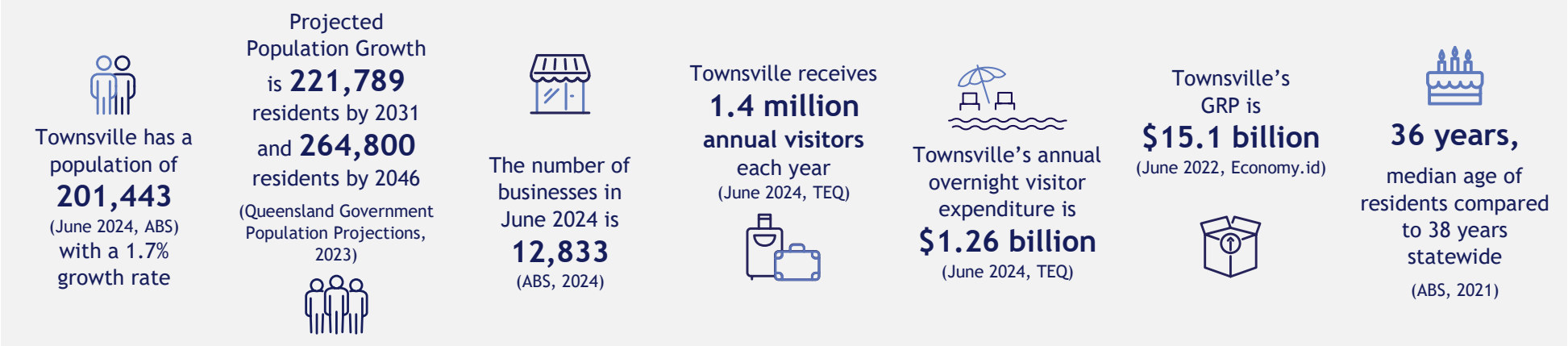
The floods severely damaged infrastructure, closing major transportation routes, including the Bruce Highway, Flinders Highway, Gregory Development Road, Mount Spec Road, Paluma Dam access road, Sooning Street on Magnetic Island, the airport, and rail lines. The collapse of the Ollera Creek Bridge north of Townsville disrupted transport and supply routes. The event had significant mental and physical impacts on individuals, communities, homes, small businesses, and primary producers. Post-event, there has been an increase in environmental and public health risks, such as mould, mosquito-borne diseases, melioidosis, and leptospirosis.

The Event Specific Local Recovery & Resilience Action Plan (ESLRRAP) aims to guide and coordinate local recovery efforts post-event, ensuring a community-led, integrated, and effective response. It outlines key recovery objectives, tasks, and success measures to restore Townsville to a new normal and improve readiness and resilience for future events.

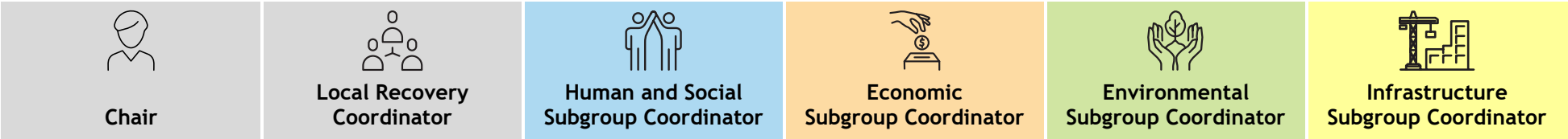


Mt Spec Road, Paluma

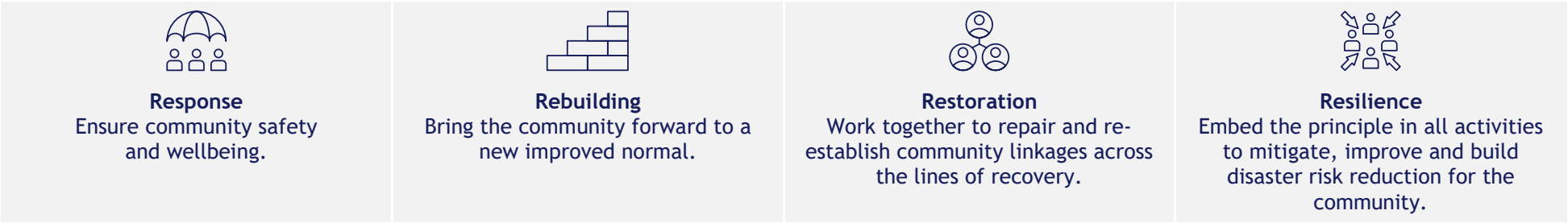
Demographics



Local Recovery Resilience Group (LRRG)



Recovery and Resilience Themes



Key Stakeholders

The local community, lead statement government, community groups, non-government organisations/non-government associations, local businesses and trader associations, service providers and other invested parties.



Evacuation Centre

Recovery Objectives

1. Provision of safe and habitable housing/accommodation for residents.
2. Provision of psychosocial support for impacted residents.
3. Provision of personal needs (clothing/food/transport/medicine).
4. Restoration of social infrastructure.
5. Reestablish community connections.
6. Welfare Management of Social Services.
7. Monitor emerging community health concerns.
8. Enhancing disaster readiness & business resilience through data integration, stakeholder engagement & impact assessments.
9. Build landscape resilience and sustainability.
10. Restoration of critical natural assets and ecosystems.
11. Reducing hazards in natural environments and coastal systems.
12. Reducing sediments run-off and pollution.
13. Restore environmental flow paths.
14. Protect wildlife and protected species.
15. Minimise any reduction of quality of life by enhancing resilience to community infrastructure and return to acceptable levels of functioning as rapidly as possible.



Community Recovery Hubs

Measures of Success

Human and Social

- Immediate post-disaster community support provided to impacted people including assistance with emergency hardship payments, housing and counselling.
- Follow-up community activities implemented to monitor mental health implications and provide support where required via Community Centres.
- The community are kept up to date with key information during the recovery process.
- Continued Community resilience and preparedness awareness for future disasters.
- Identified impacted Community groups & sporting clubs returned to full service.

Economic

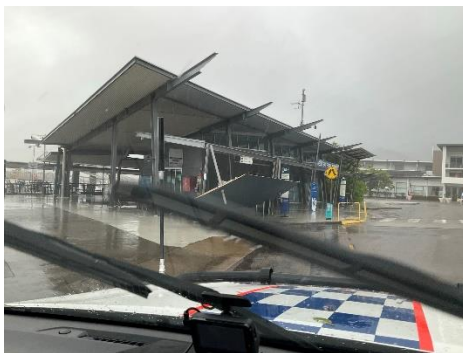
- Impact assessment for businesses undertaken.
- Support and advocate for federal government submissions.
- Establish Stakeholder representation for community events, focusing on disaster readiness.
- Completion of feasibility assessments to assist in identifying operational requirements.

Environmental

- Integration of disaster resilience and planning in Sustainable Destination initiatives and programs.
- Restore and recover creeks and rivers, including riverbank and coastal erosion and repair work with integration of environmental flow paths.
- Review of drainage management within coastal catchments and environments with a focus on building back better.
- Environmental impact study completed on wildlife and key species.

Infrastructure

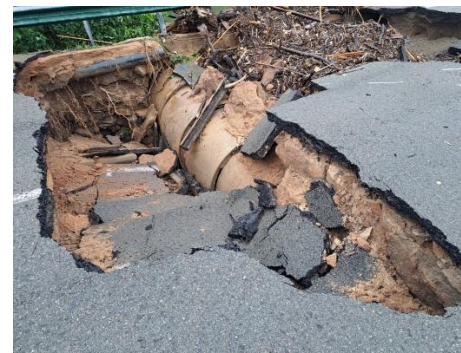
- Restoration and Operational status of essential services, community facilities including roads.
- Access to isolated communities restored.
- Completion of impact assessments for Council and community assets.
- Future planning and alignment of betterment projects to ensure they are aligned for suitable funding programs.



Nelly Bay Terminal Damage, Magnetic Island



Sooning Street Bridge, Magnetic Island



Sooning Street Bridge, Magnetic Island



Elena Street Sewer Pipe, Magnetic Island

Disaster Relief Measures

Recovery works are jointly funded by the Australian and Queensland governments through the Disaster Recovery Funding Arrangements.

Disaster Relief Measure	Activation Date
Counter Disaster Operations	1 February 2025
Personal Hardship Assistance Scheme	1 February 2025
Essential Services Safety & Reconnection Scheme	1 February 2025
Reconstruction of Public Assets	1 February 2025
Freight Subsidies for Primary Producers	4 February 2025
Disaster Assistance Loans for Not-For-Profit Organisations, Primary Producers and Small Businesses	4 February 2025
Disaster Assistance (Essential Working Capital) Loans Scheme Not-For-Profit Organisations, Primary Producers and Small Businesses	4 February 2025
Exceptional Disaster Assistance Recovery Grants & Primary Producers	11 February 2025
Exceptional Disaster Assistance Recovery Grants for Small Business and Not-For-Profits	11 February 2025



Alice River



Cungulla



Rockpool, The Strand



Abbott Street, Oonoonba

Damage and Impacts

Human and Social	Economic	Environmental	Infrastructure
Basic Needs and Health <ul style="list-style-type: none"> Lack of basic needs, physical displacement, psychosocial issues, financial stress, health risks. Food security/access. Loss of clothing and linen. Mould growth. Cancellation of elective procedures at hospital. Psychological impacts from previous natural disasters. Animal care items - food, bedding, suitable cages/containers to secure animals at home. Housing and Infrastructure <ul style="list-style-type: none"> Damage to homes and infrastructure. Accommodation needs. Isolation and/or displacement. Damage to social infrastructure. Access to Services and Support <ul style="list-style-type: none"> Access to support services. Access to financial assistance. Additional pressures on existing community services. Social and Community Impact <ul style="list-style-type: none"> Closure of social and sporting events/loss of social connectedness. 	Agricultural and Livestock Losses <ul style="list-style-type: none"> Loss of cattle/stock. Impacts on horticulture and agriculture sectors. Supply Chain and Transportation Disruptions <ul style="list-style-type: none"> Supply chain issues (transporting to and from the region). Road and rail closures into the mineral province. Issues with lack of resupply due to access cuts. Industry Sector Impacts <ul style="list-style-type: none"> Mining sector impacts. Emerging issues with construction constraints in the region. Tourism & Accommodation <ul style="list-style-type: none"> Tourism impacts. Short and long-term accommodation impacts. Attraction impacts (Rockpool, Townsville Entertainment and Convention Centre (TECC)). Event Cancellations and Venue Damage <ul style="list-style-type: none"> Cancellation of events. Water damage to event buildings. Educational and Workforce Disruptions <ul style="list-style-type: none"> Closures of schools (secondary and tertiary) and daycares impacting the workforce. Small Business Challenges <ul style="list-style-type: none"> Small business impacts (closure, loss of income, loss of stock). 	Erosion and Geographical changes <ul style="list-style-type: none"> Erosion along riverbanks. Erosion affecting coastal areas. Alternations to the physical structure of coastal regions. Landslides at Mt Spec Road, Paluma. Water Quality and Pollution <ul style="list-style-type: none"> Water quality issues - presence of debris & pollution. Contamination and health risks from mould and blackwater. Impact on the Great Barrier Reef Marine Park and local reefs. Infrastructure and Environmental Changes <ul style="list-style-type: none"> Alterations in the natural flow of waterways. Broad environmental material impacts. Structural failures in waterways & catchments. 	Power and Connectivity Issues <ul style="list-style-type: none"> Power outage to approximately 18,000 residents. Loss of internet/phone connectivity, particularly in northern suburbs. Infrastructure and Facility Damage <ul style="list-style-type: none"> Damage to Council buildings and assets. Damage to emergency services facilities. Damage to infrastructure on Magnetic Island. Ferry terminal damage at Magnetic Island. Water Supply and Waste Management <ul style="list-style-type: none"> Bolger Bay Pump Station failure, causing drinking water loss on Magnetic Island. Wastewater pump stations at capacity, resulting in sewage overflows. Cungulla water supply reconnection delay. Stormwater retention issues at waste stations. Transportation Disruptions <ul style="list-style-type: none"> Over 50 critical road closures across Townsville LGA. Ollera Creek infrastructure closure, temporary bridge for resupply. Passenger and freight operations stopped between Proserpine and Cairns. Airport closed for 2 days due to weather conditions. Re-supply and Accessibility Challenges <ul style="list-style-type: none"> Re-supply issues to isolated locations. All-weather hard stand at refuse sites.

Recovery Tasks

Human and Social	Economic	Environmental	Infrastructure
Housing & Accommodation <ul style="list-style-type: none"> Settle displaced households in temporary accommodation. Identify and address long-term housing needs. Community Support <ul style="list-style-type: none"> Monitor local situations with neighbourhood centres. Connect with community partners for house cleaning and other needs. Environmental Support <ul style="list-style-type: none"> Distribute mould cleaner with Environmental Subgroup and relative organisations. Advocacy & Funding <ul style="list-style-type: none"> Advocate for funding packages for impacted residents. 	Insurance & Data <ul style="list-style-type: none"> Correlate insurance claims with damage assessments and flood mapping. Identify insurance shortfalls for small business in North Queensland. Advocacy & Collaboration <ul style="list-style-type: none"> Advocate for a real-time data portal from the Insurance Council of Australia Collaborate on a disaster readiness package for business resilience. Impact Assessment <ul style="list-style-type: none"> Assess feasibility of a business impact assessment survey/module. 	Sustainable Destination & Resilience <ul style="list-style-type: none"> Build sustainable destination. Involve environmental suppliers in resilience actions. Restoration & Ecology <ul style="list-style-type: none"> Restore creeks, rivers, soil, and wetlands. Restore landscape ecology and coastal catchments betterment. Critical Response <ul style="list-style-type: none"> Inspect assets, respond to incidents, and support wildlife. Data Collection & Monitoring <ul style="list-style-type: none"> Investigate climate models, stability mapping, and data integration. Regenerative Works <ul style="list-style-type: none"> Manage waterways, improve wetlands, and wildlife plans. Impact Mapping <ul style="list-style-type: none"> Map coastal changes, flood paths, and erosion. Biodiversity & Wildlife <ul style="list-style-type: none"> Assess monsoon impact and establish wildlife response. Pest Management <ul style="list-style-type: none"> Control invasive species like Yellow crazy ants and Siam weed. 	Essential Services <ul style="list-style-type: none"> Reconnect power, water, waste, and telecommunications. Infrastructure Restoration <ul style="list-style-type: none"> Restore Council infrastructure and access to isolated communities. Remove and restore green and hard waste. Assessments & Planning <ul style="list-style-type: none"> Complete impact and needs assessments. Inspect schools and repair road potholes. Key Projects <ul style="list-style-type: none"> Prioritise long-term betterment projects. Restore key transport routes and community facilities. Resilience & Funding <ul style="list-style-type: none"> Develop flood resilience strategies. Source funding and complete recovery projects. Project Management <ul style="list-style-type: none"> Plan project prioritisation and supply chain management.