

PROJECT ID 60212663  
LAST MODIFIED dxe 14-June-2011  
FILE NAME 60212663\_WR\_AP\_12



Cadastre - © 2010 The State of Queensland  
StreetPro © 2010 Pitney Bowes Software Pty Ltd  
Roads, Rivers - © 2010 PSMA Australia Pty Ltd

AECOM does not warrant the accuracy or completeness of information displayed in this map and any person using it does so at their own risk. AECOM shall bear no responsibility or liability for any errors, faults, defects, or omissions in the information.



Scale: 1:30,000  
(when printed at A3)

0 500 1,000 2,000 Metres

Velocity (m/s)

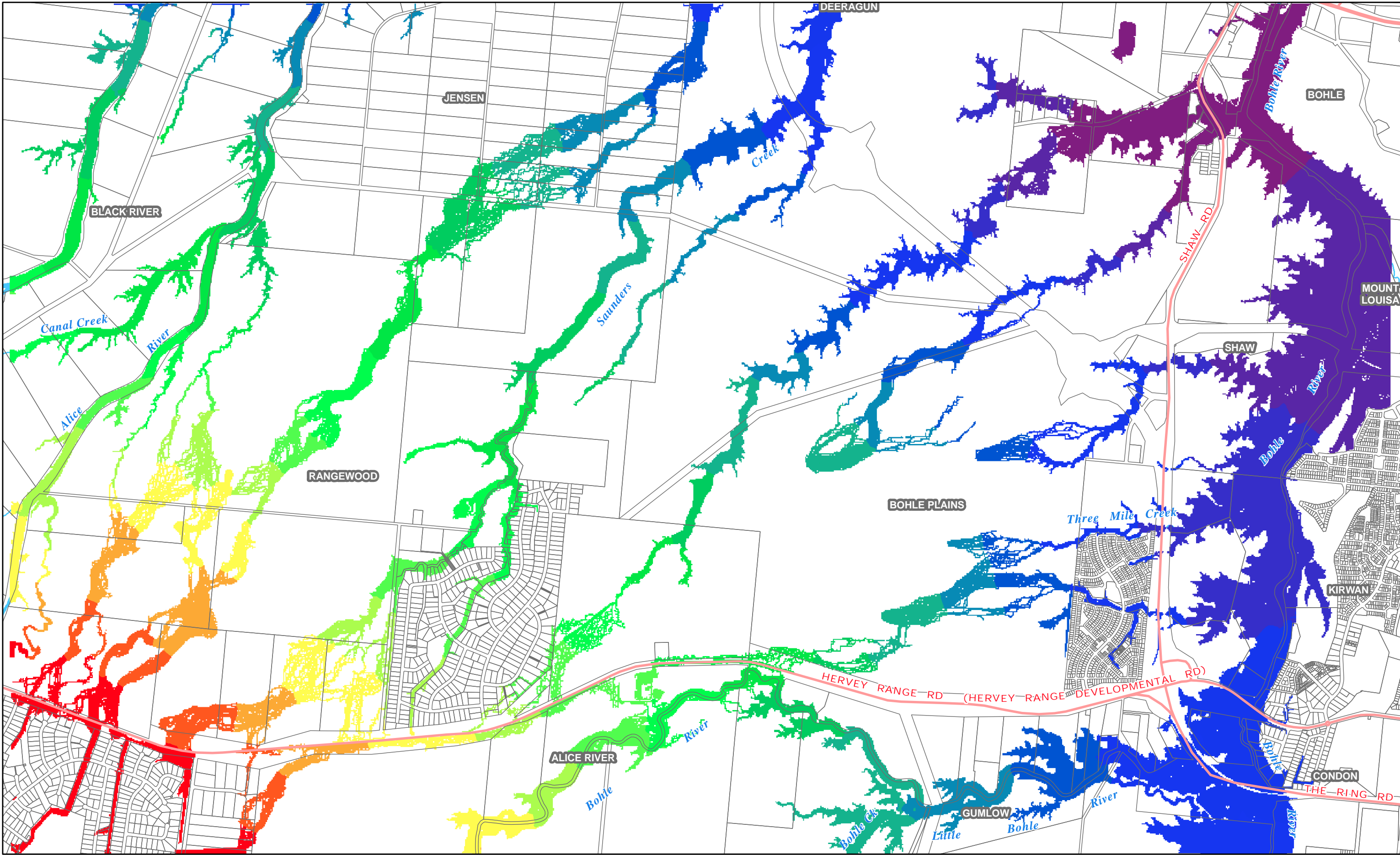


0 - 0.25  
0.25 - 0.50  
0.50 - 0.75  
0.75 - 1.00  
1.00 - 1.25  
1.25 - 1.50  
1.50 - 1.75  
1.75 - 2.00  
Above 2

UPPER BOHLE PLAINS  
FLOOD STUDY  
20 year 24 hr ARI Velocity  
Base Case

Figure B12





PROJECT ID 60212663  
LAST MODIFIED dxe 14-June-2011  
FILE NAME 60212663\_WR\_AP\_13



Cadastre - © 2010 The State of Queensland  
StreetPro © 2010 Pitney Bowes Software Pty Ltd  
Roads, Rivers - © 2010 PSMA Australia Pty Ltd

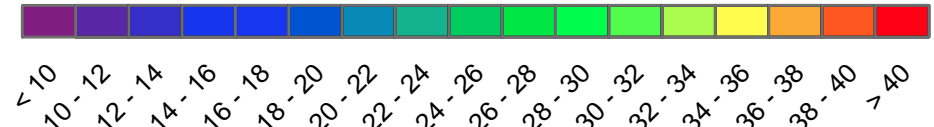
AECOM does not warrant the accuracy or completeness of information displayed in this map and any person using it does so at their own risk. AECOM shall bear no responsibility or liability for any errors, faults, defects, or omissions in the information.



Scale: 1:30,000  
(when printed at A3)

0 500 1,000 2,000 Metres

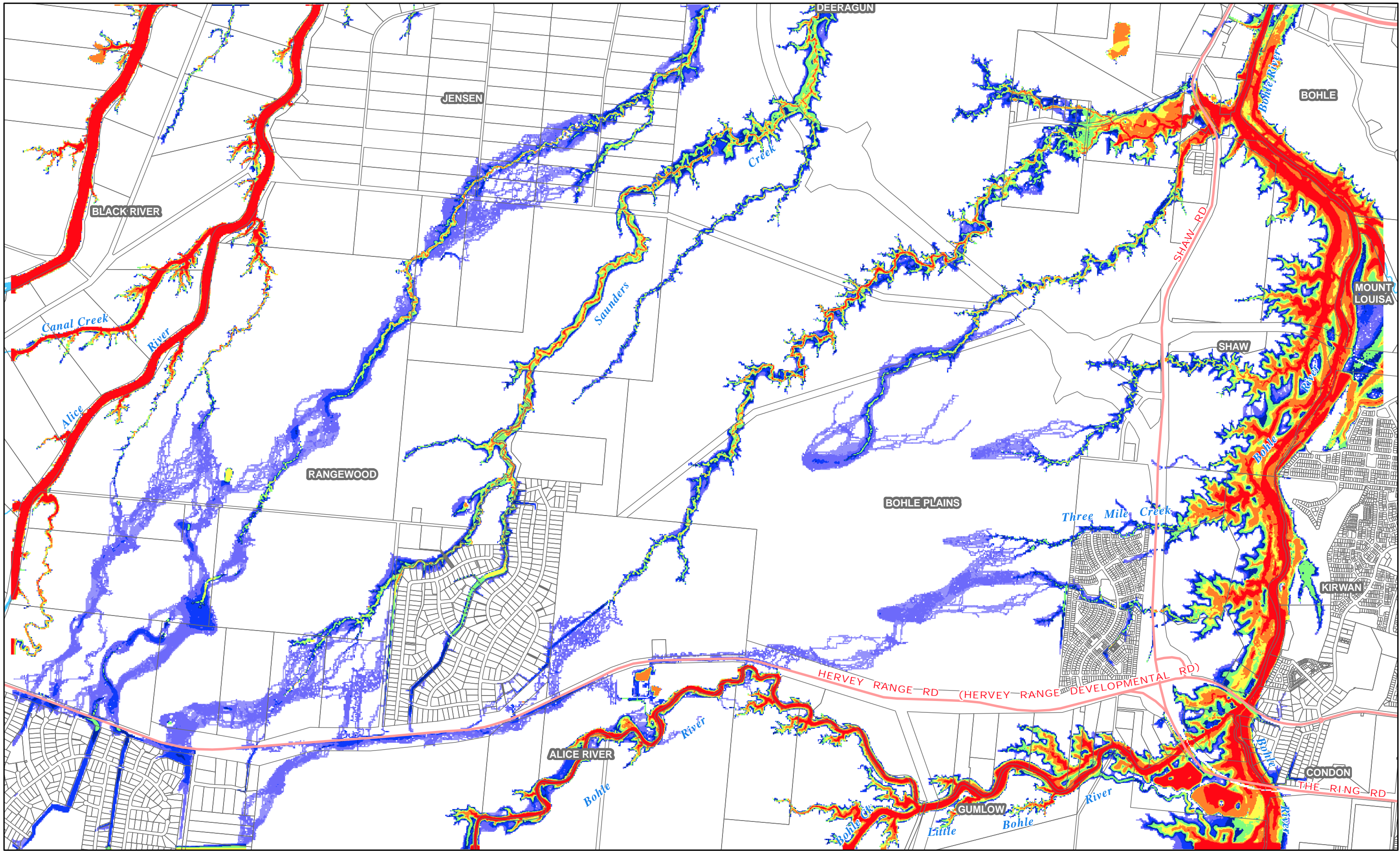
#### Water Levels (m AHD)



**UPPER BOHLE PLAINS  
FLOOD STUDY**  
**50 year 24 hr ARI Flood Levels**  
**Base Case**

Figure B13





PROJECT ID 60212663  
LAST MODIFIED dxe 14-June-2011  
FILE NAME 60212663\_WR\_AP\_14



Cadastre - © 2010 The State of Queensland  
StreetPro © 2010 Pitney Bowes Software Pty Ltd  
Roads, Rivers - © 2010 PSMA Australia Pty Ltd

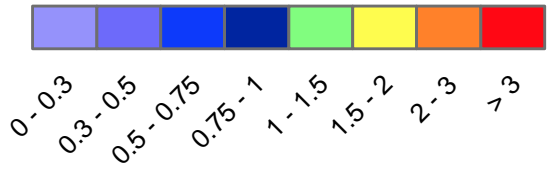
AECOM does not warrant the accuracy or completeness of information displayed in this map and any person using it does so at their own risk. AECOM shall bear no responsibility or liability for any errors, faults, defects, or omissions in the information.



Scale: 1:30,000  
(when printed at A3)

0 500 1,000 2,000 Metres

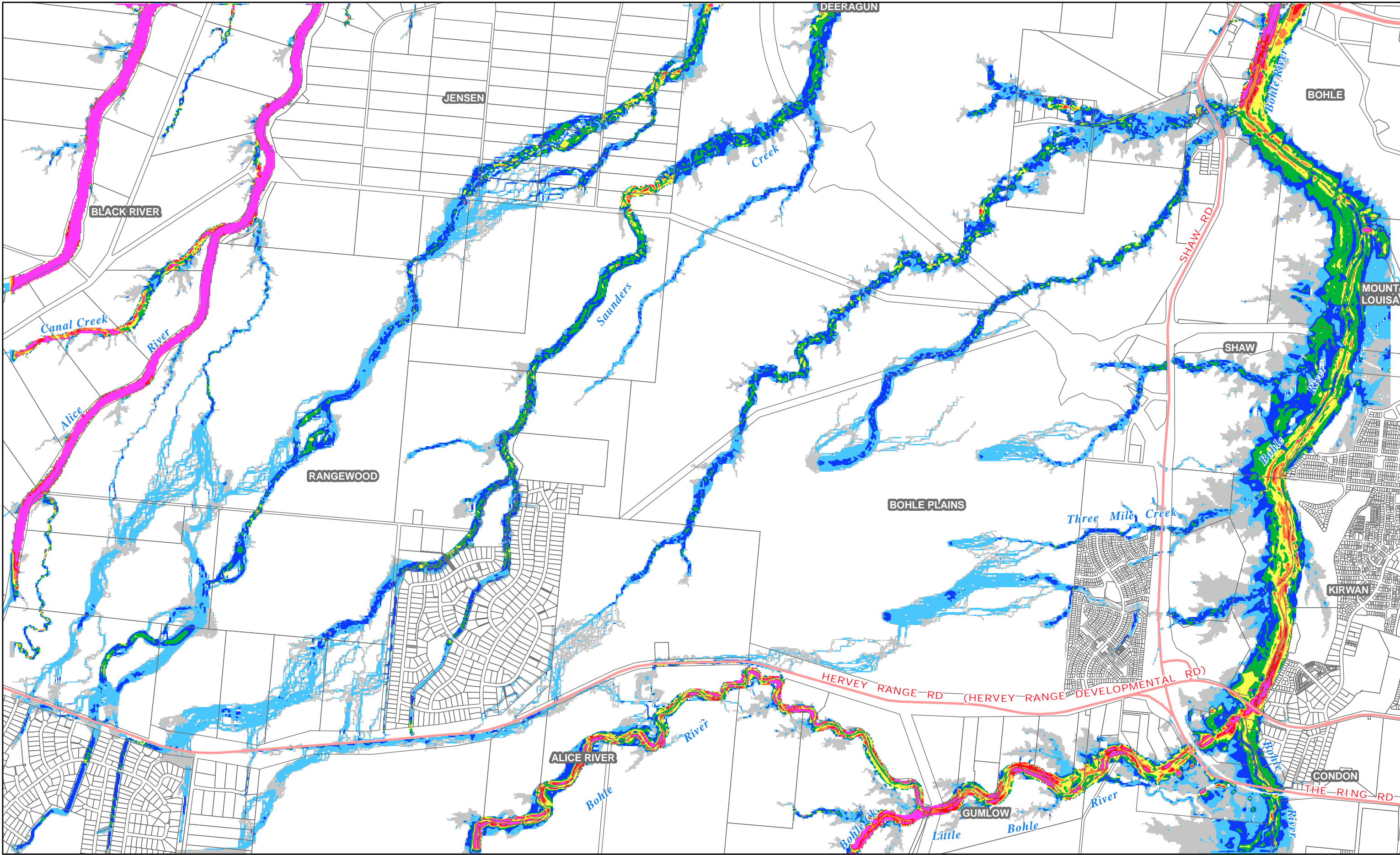
Water Depth (m)



**UPPER BOHLE PLAINS  
FLOOD STUDY**  
50 year 24 hr ARI Water Depths  
Base Case

Figure B14





PROJECT ID 60212663  
LAST MODIFIED dxe 14-June-2011  
FILE NAME 60212663\_WR\_AP\_15



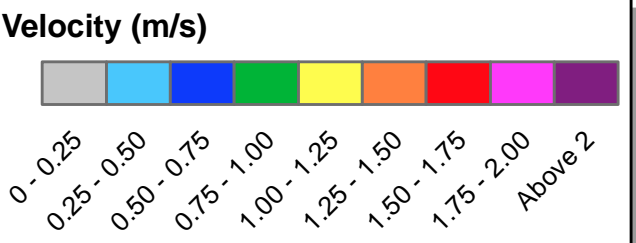
Cadastre - © 2010 The State of Queensland  
StreetPro © 2010 Pitney Bowes Software Pty Ltd  
Roads, Rivers - © 2010 PSMA Australia Pty Ltd

AECOM does not warrant the accuracy or completeness of information displayed in this map and any person using it does so at their own risk. AECOM shall bear no responsibility or liability for any errors, faults, defects, or omissions in the information.



Scale: 1:30,000  
(when printed at A3)

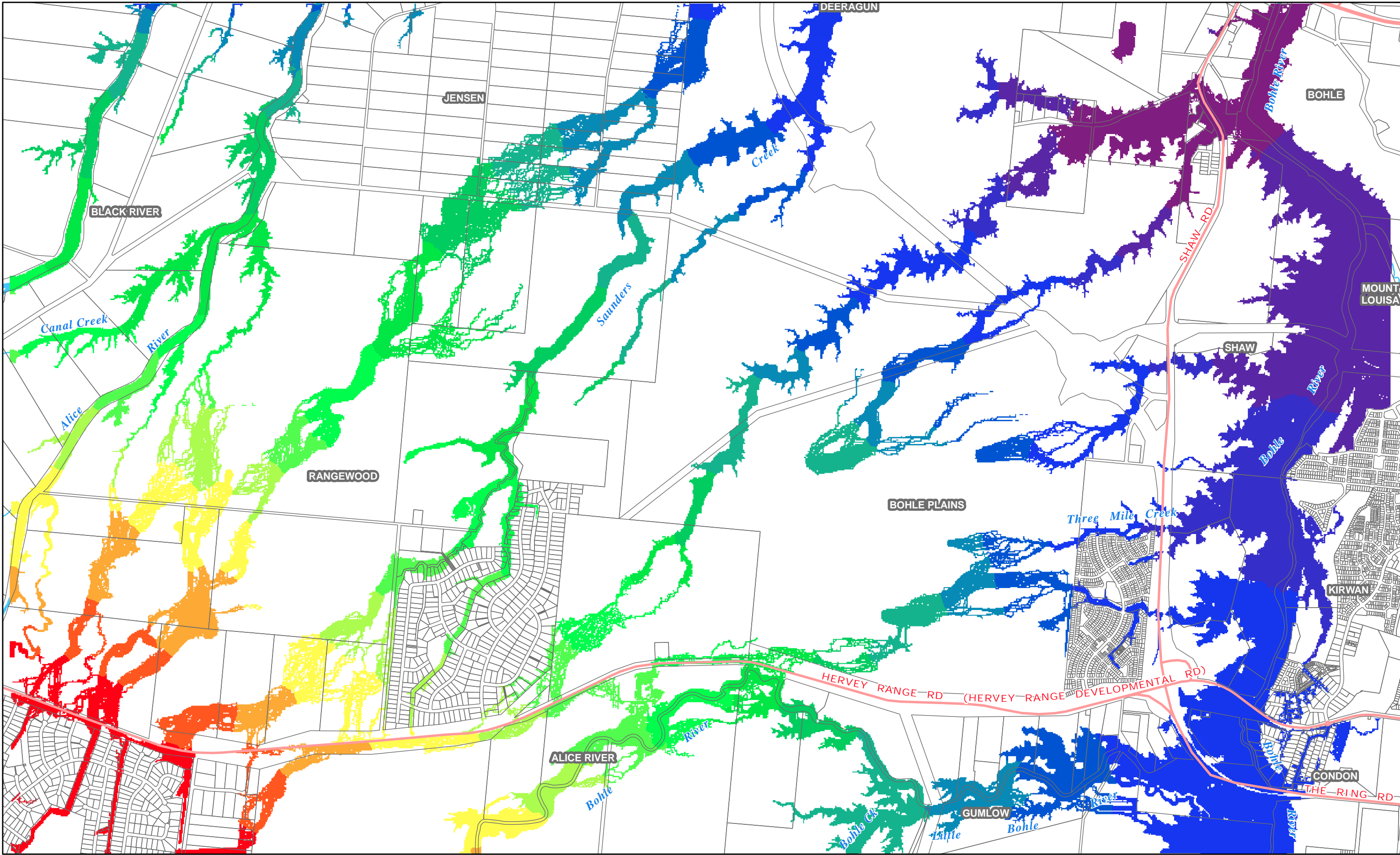
0 500 1,000 2,000 Metres



UPPER BOHLE PLAINS  
FLOOD STUDY  
50 year 24 hr ARI Velocity  
Base Case

Figure B15





PROJECT ID 60212663  
LAST MODIFIED dxe 14-June-2011  
FILE NAME 60212663\_WR\_AP\_16



Cadastre - © 2010 The State of Queensland  
StreetPro © 2010 Pitney Bowes Software Pty Ltd  
Roads, Rivers - © 2010 PSMA Australia Pty Ltd

AECOM does not warrant the accuracy or completeness of information displayed in this map and any person using it does so at their own risk. AECOM shall bear no responsibility or liability for any errors, faults, defects, or omissions in the information.



Scale: 1:30,000  
(when printed at A3)

0 500 1,000 2,000 Metres

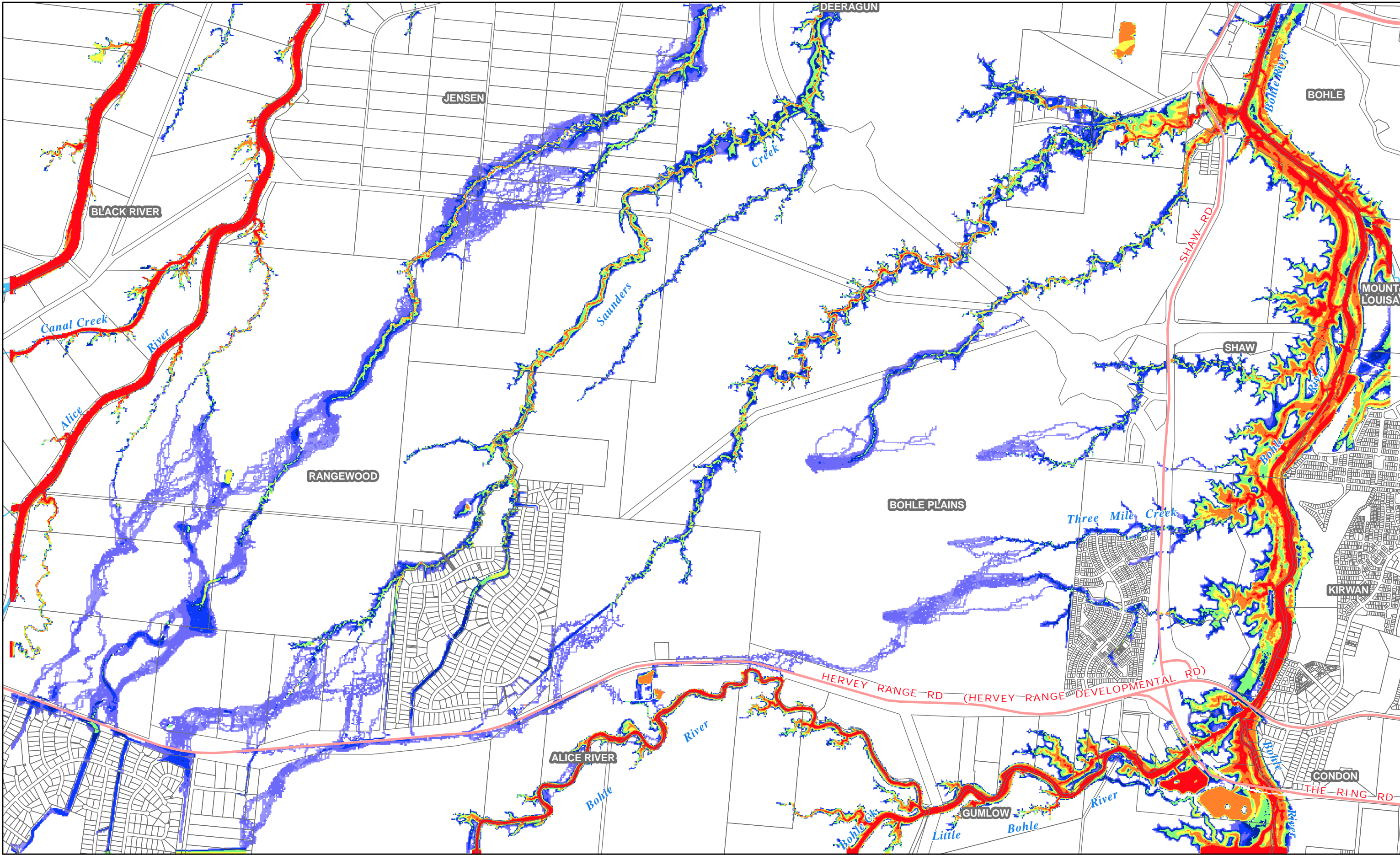
Water Levels (m AHD)



UPPER BOHLE PLAINS  
FLOOD STUDY  
100 year 24 hr ARI Flood Levels  
Base Case

Figure B16





PROJECT ID 60212663  
LAST MODIFIED dxe 14-June-2011  
FILE NAME 60212663\_WR\_AP\_17



Cadastre - © 2010 The State of Queensland  
StreetPro © 2010 Pitney Bowes Software Pty Ltd  
Roads, Rivers - © 2010 PSMA Australia Pty Ltd

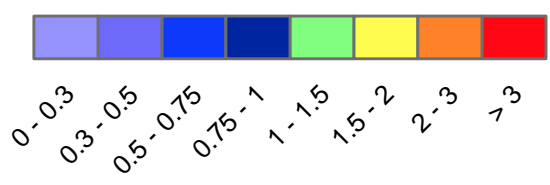
AECOM does not warrant the accuracy or completeness of information displayed in this map and any person using it does so at their own risk. AECOM shall bear no responsibility or liability for any errors, faults, defects, or omissions in the information.



Scale: 1:30,000  
(when printed at A3)

0 500 1,000 2,000 Metres

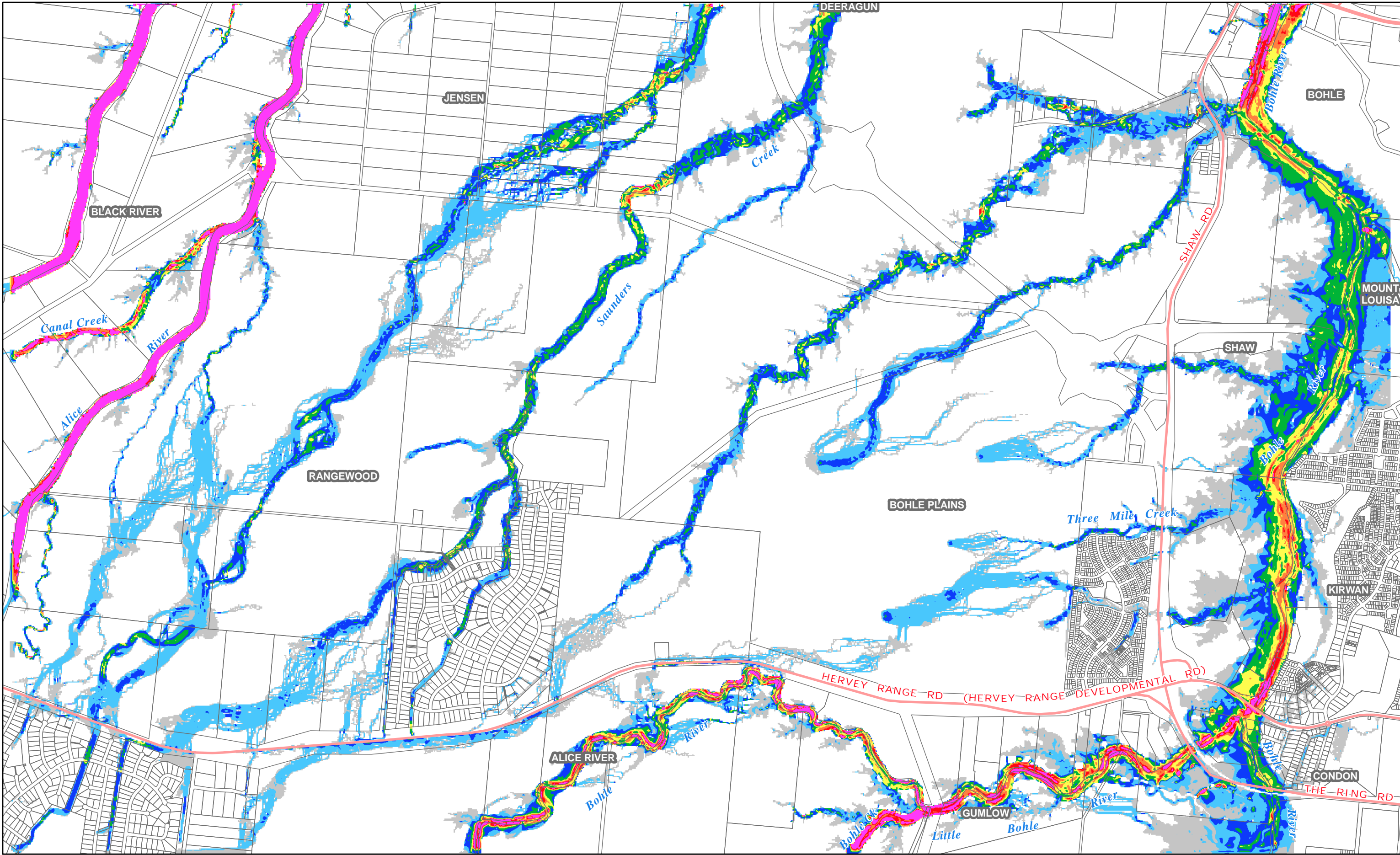
Water Depth (m)



UPPER BOHLE PLAINS  
FLOOD STUDY  
100 year 24 hr ARI Water Depths  
Base Case

Figure B17





PROJECT ID 60212663  
LAST MODIFIED dxe 14-June-2011  
FILE NAME 60212663\_WR\_AP\_18



Cadastre - © 2010 The State of Queensland  
StreetPro © 2010 Pitney Bowes Software Pty Ltd  
Roads, Rivers - © 2010 PSMA Australia Pty Ltd

AECOM does not warrant the accuracy or completeness of information displayed in this map and any person using it does so at their own risk. AECOM shall bear no responsibility or liability for any errors, faults, defects, or omissions in the information.



Scale: 1:30,000  
(when printed at A3)

0 500 1,000 2,000 Metres

Velocity (m/s)

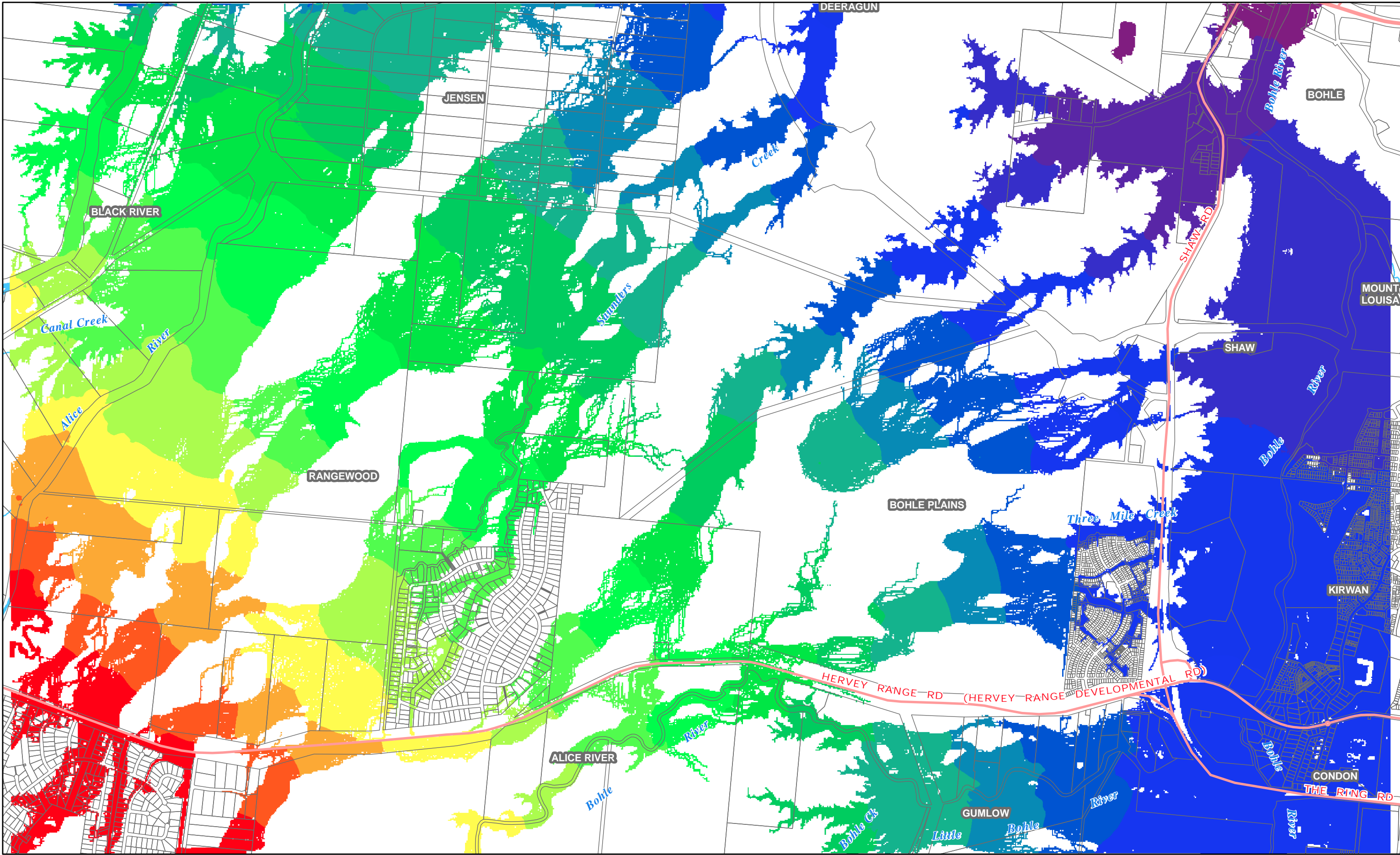


0 - 0.25  
0.25 - 0.50  
0.50 - 0.75  
0.75 - 1.00  
1.00 - 1.25  
1.25 - 1.50  
1.50 - 1.75  
1.75 - 2.00  
Above 2

UPPER BOHLE PLAINS  
FLOOD STUDY  
100 year 24 hr ARI Velocity  
Base Case

Figure B18





PROJECT ID 60212663  
LAST MODIFIED dxe 14-June-2011  
FILE NAME 60212663\_WR\_AP\_19



Cadastre - © 2010 The State of Queensland  
StreetPro © 2010 Pitney Bowes Software Pty Ltd  
Roads, Rivers - © 2010 PSMA Australia Pty Ltd

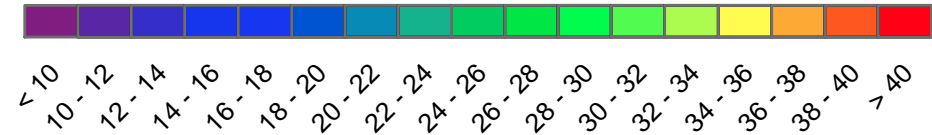
AECOM does not warrant the accuracy or completeness of information displayed in this map and any person using it does so at their own risk. AECOM shall bear no responsibility or liability for any errors, faults, defects, or omissions in the information.



Scale: 1:30,000  
(when printed at A3)

0 500 1,000 2,000 Metres

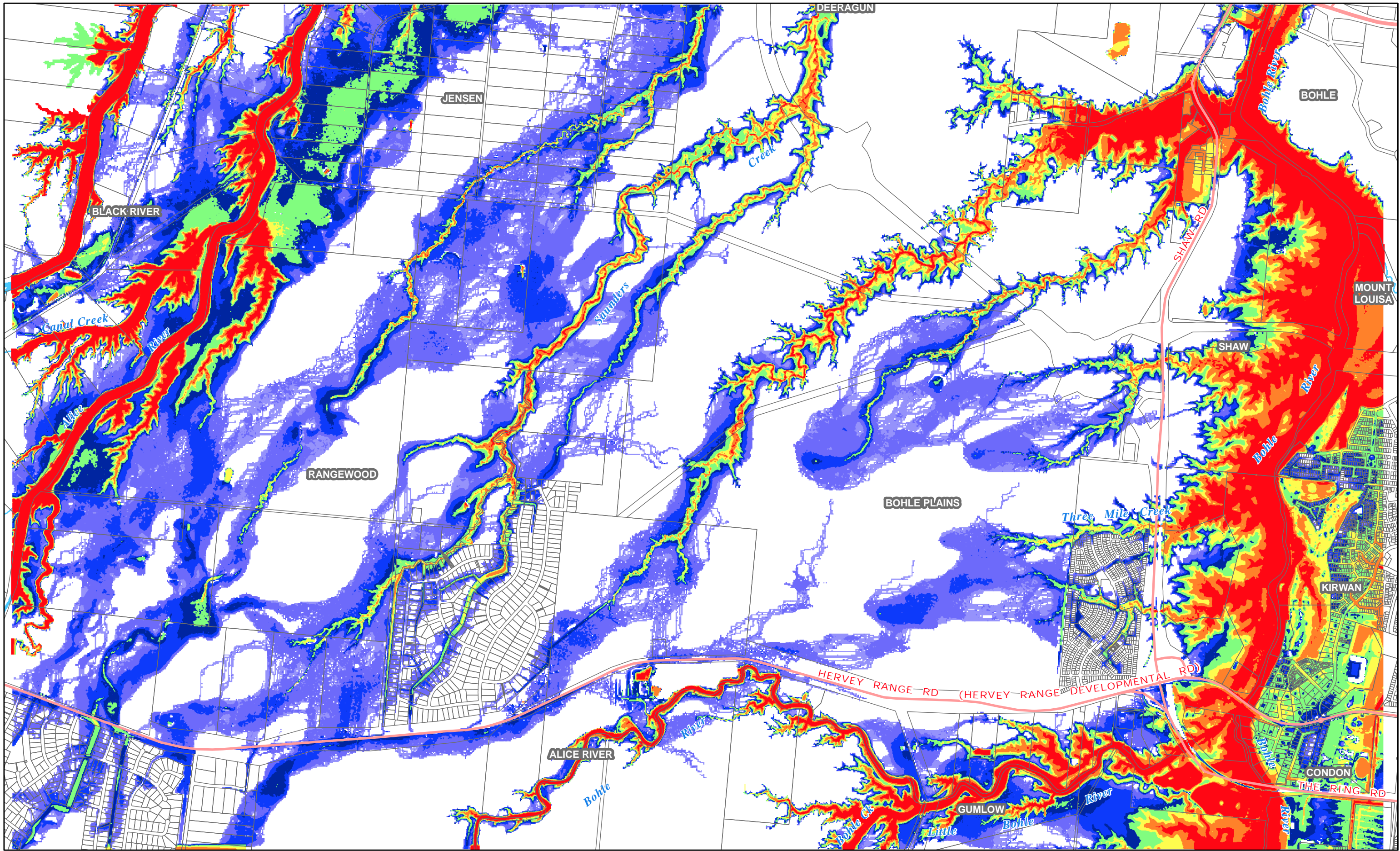
Water Levels (m AHD)



UPPER BOHLE PLAINS  
FLOOD STUDY  
PMP 3 hr ARI Flood Levels  
Base Case

Figure B19





PROJECT ID 60212663  
LAST MODIFIED dxe 14-June-2011  
FILE NAME 60212663\_WR\_AP\_20



Cadastre - © 2010 The State of Queensland  
StreetPro © 2010 Pitney Bowes Software Pty Ltd  
Roads, Rivers - © 2010 PSMA Australia Pty Ltd

AECOM does not warrant the accuracy or completeness of information displayed in this map and any person using it does so at their own risk. AECOM shall bear no responsibility or liability for any errors, faults, defects, or omissions in the information.



Scale: 1:30,000  
(when printed at A3)

0 500 1,000 2,000 Metres

Water Depth (m)

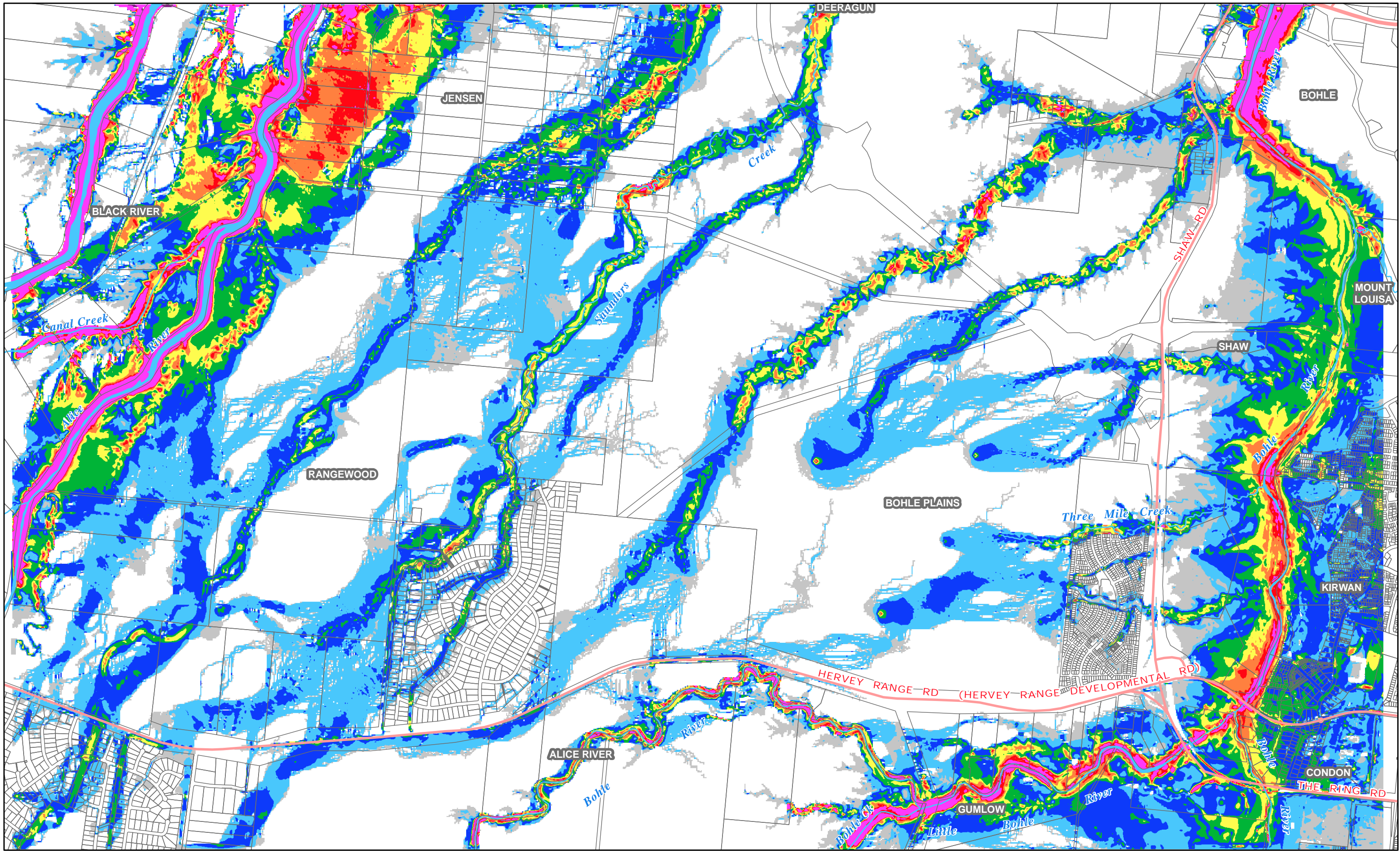


0-0.3  
0.3-0.5  
0.5-0.75  
0.75-1  
1-1.5  
1.5-2  
2-3  
>3

UPPER BOHLE PLAINS  
FLOOD STUDY  
PMP 3 hr ARI Water Depths  
Base Case

Figure B20





PROJECT ID 60212663  
 LAST MODIFIED dxe 14-June-2011  
 FILE NAME 60212663\_WR\_AP\_21



Cadastre - © 2010 The State of Queensland  
 StreetPro © 2010 Pitney Bowes Software Pty Ltd  
 Roads, Rivers - © 2010 PSMA Australia Pty Ltd

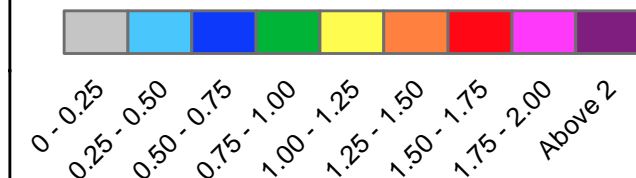
AECOM does not warrant the accuracy or completeness of information displayed in this map and any person using it does so at their own risk. AECOM shall bear no responsibility or liability for any errors, faults, defects, or omissions in the information.



Scale: 1:30,000  
 (when printed at A3)

0 500 1,000 2,000 Metres

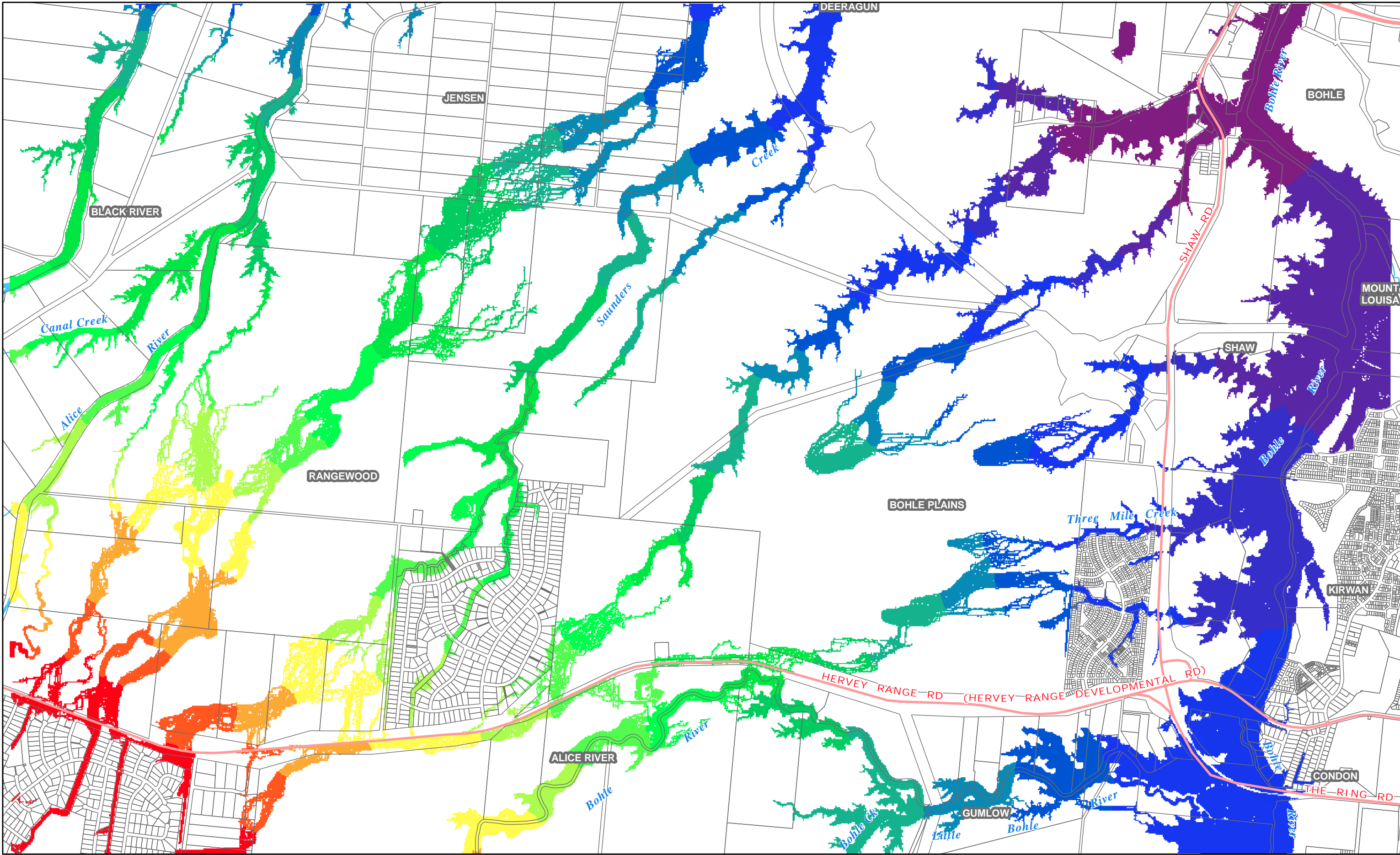
Velocity (m/s)



UPPER BOHLE PLAINS  
 FLOOD STUDY  
 PMP 3 hr ARI Velocity  
 Base Case

Figure B21





PROJECT ID 60212663  
LAST MODIFIED dxe 14-June-2011  
FILE NAME 60212663\_WR\_AP\_22



Cadastre - © 2010 The State of Queensland  
StreetPro © 2010 Pitney Bowes Software Pty Ltd  
Roads, Rivers - © 2010 PSMA Australia Pty Ltd

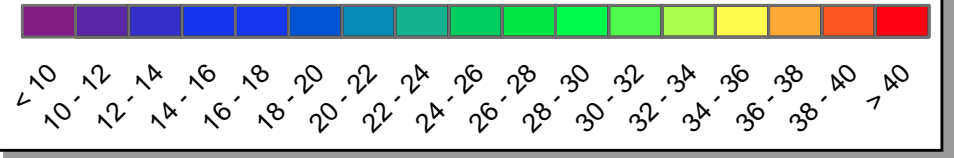
AECOM does not warrant the accuracy or completeness of information displayed in this map and any person using it does so at their own risk. AECOM shall bear no responsibility or liability for any errors, faults, defects, or omissions in the information.



Scale: 1:30,000  
(when printed at A3)

0 500 1,000 2,000 Metres

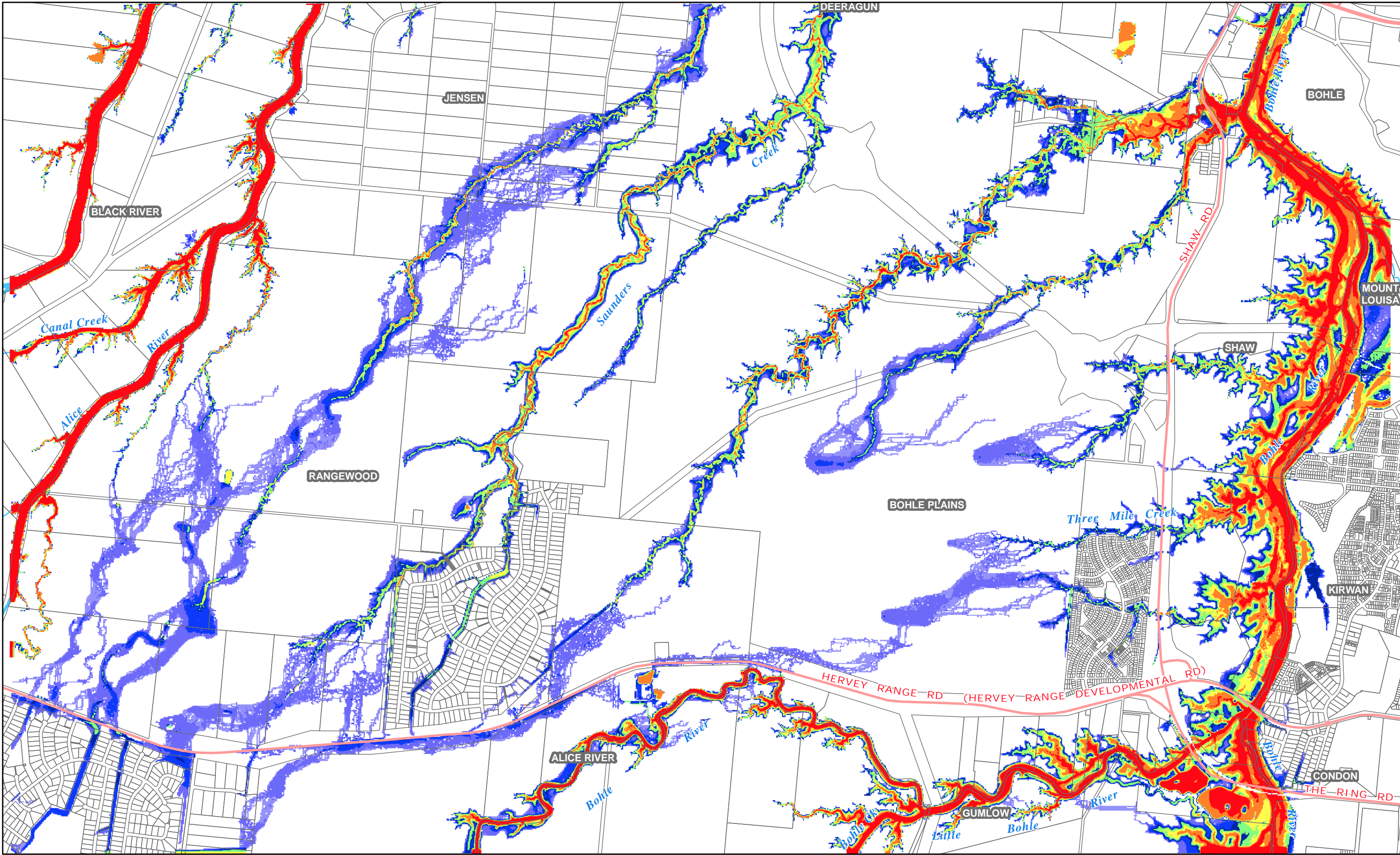
Water Levels (m AHD)



UPPER BOHLE PLAINS  
FLOOD STUDY  
50 year 24 hr ARI Flood Levels  
Urbanised Case

Figure B22





PROJECT ID 60212663  
LAST MODIFIED dxe 14-June-2011  
FILE NAME 60212663\_WR\_AP\_23



Cadastre - © 2010 The State of Queensland  
StreetPro © 2010 Pitney Bowes Software Pty Ltd  
Roads, Rivers - © 2010 PSMA Australia Pty Ltd

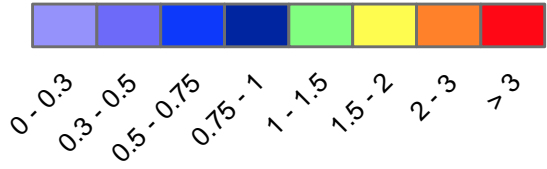
AECOM does not warrant the accuracy or completeness of information displayed in this map and any person using it does so at their own risk. AECOM shall bear no responsibility or liability for any errors, faults, defects, or omissions in the information.



Scale: 1:30,000  
(when printed at A3)

0 500 1,000 2,000 Metres

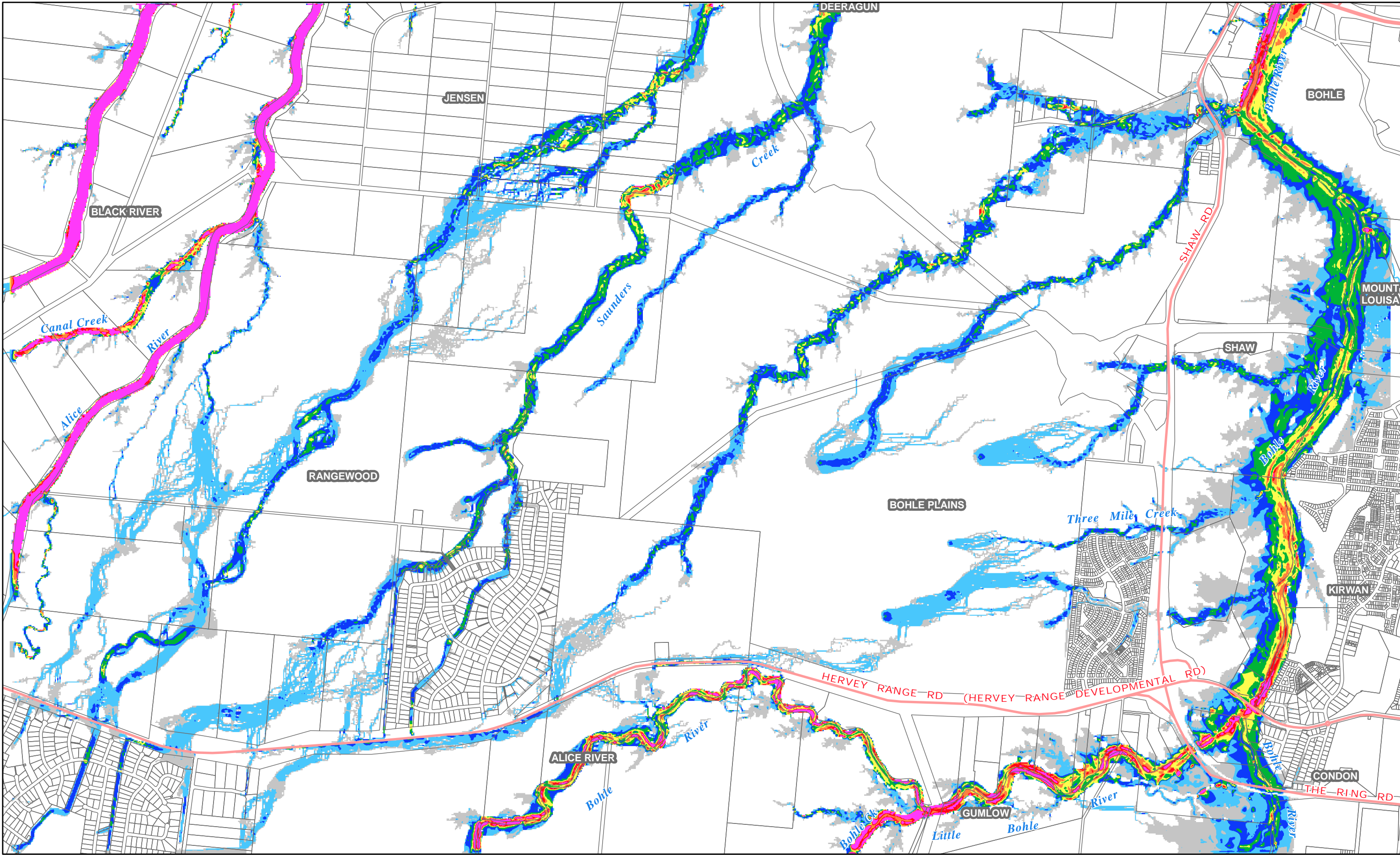
Water Depth (m)



UPPER BOHLE PLAINS  
FLOOD STUDY  
50 year 24 hr ARI Water Depths  
Urbanised Case

Figure B23





PROJECT ID 60212663  
LAST MODIFIED dxe 14-June-2011  
FILE NAME 60212663\_WR\_AP\_24



Cadastre - © 2010 The State of Queensland  
StreetPro © 2010 Pitney Bowes Software Pty Ltd  
Roads, Rivers - © 2010 PSMA Australia Pty Ltd

AECOM does not warrant the accuracy or completeness of information displayed in this map and any person using it does so at their own risk. AECOM shall bear no responsibility or liability for any errors, faults, defects, or omissions in the information.



Scale: 1:30,000  
(when printed at A3)

0 500 1,000 2,000 Metres

Velocity (m/s)

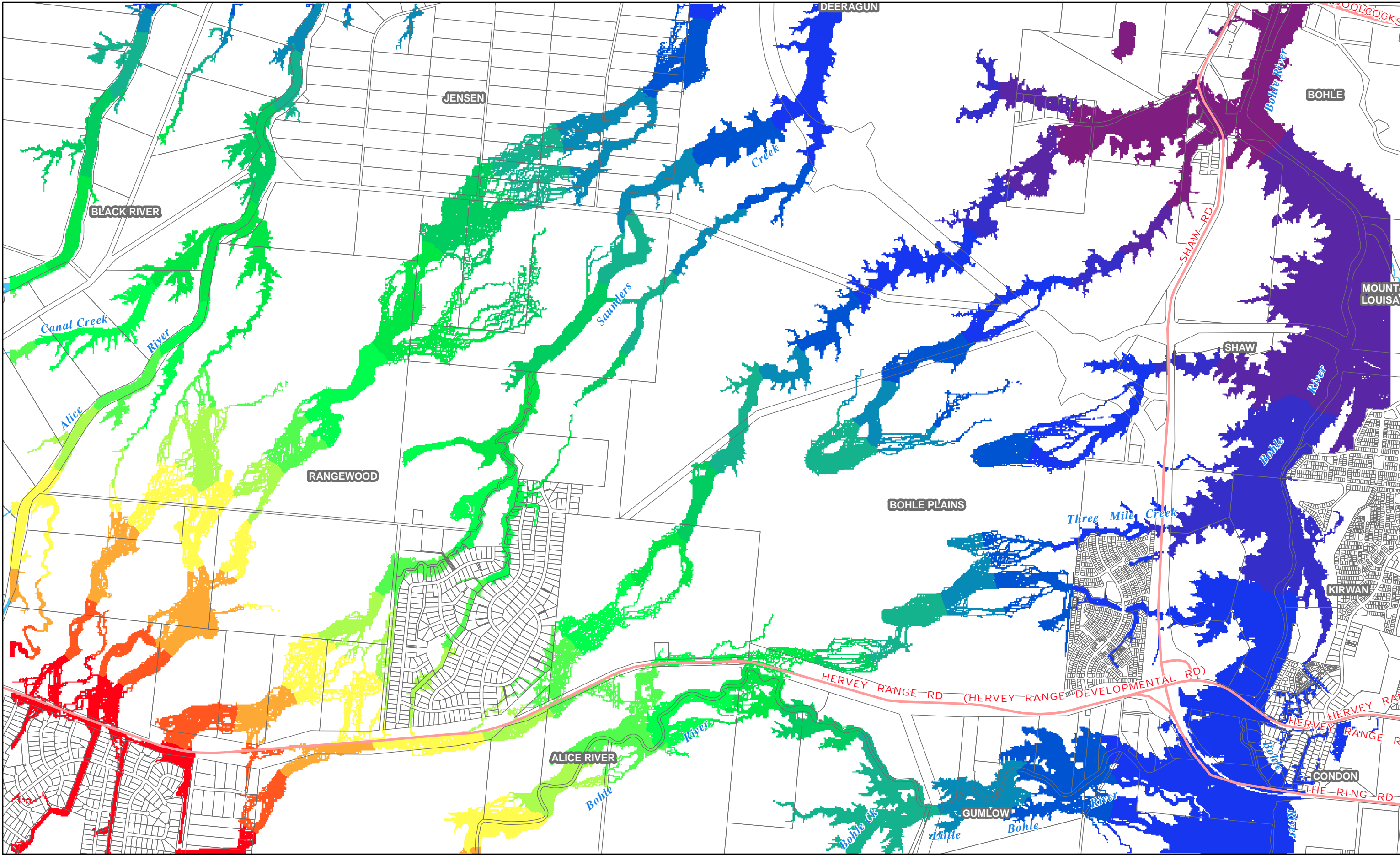


0 - 0.25  
0.25 - 0.50  
0.50 - 0.75  
0.75 - 1.00  
1.00 - 1.25  
1.25 - 1.50  
1.50 - 1.75  
1.75 - 2.00  
Above 2

UPPER BOHLE PLAINS  
FLOOD STUDY  
50 year 24 hr ARI Velocity  
Urbanised Case

Figure B24





PROJECT ID 60212663  
LAST MODIFIED dxe 14-June-2011  
FILE NAME 60212663\_WR\_AP\_25



Cadastre - © 2010 The State of Queensland  
StreetPro © 2010 Pitney Bowes Software Pty Ltd  
Roads, Rivers - © 2010 PSMA Australia Pty Ltd

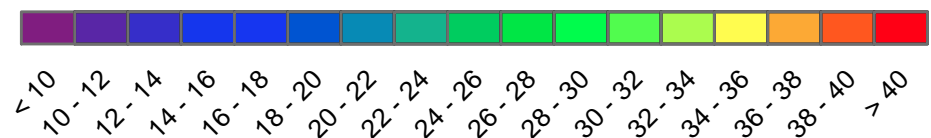
AECOM does not warrant the accuracy or completeness of information displayed in this map and any person using it does so at their own risk. AECOM shall bear no responsibility or liability for any errors, faults, defects, or omissions in the information.



Scale: 1:30,000  
(when printed at A3)

0 500 1,000 2,000 Metres

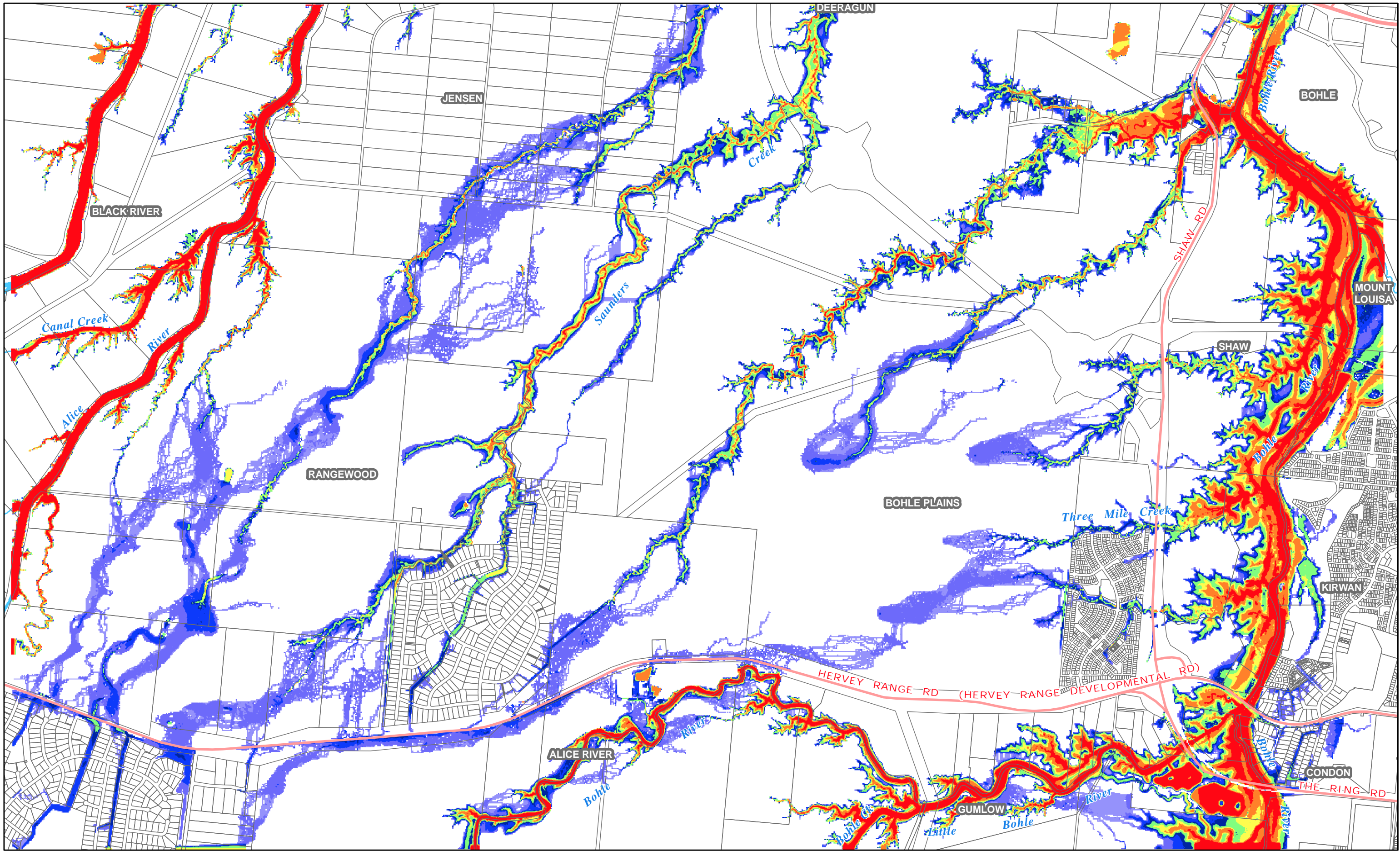
#### Water Levels (m AHD)



#### UPPER BOHLE PLAINS FLOOD STUDY 100 year 24 hr ARI Flood Levels Urbanised Case

Figure B25





PROJECT ID 60212663  
LAST MODIFIED dxe 14-June-2011  
FILE NAME 60212663\_WR\_AP\_26



Cadastre - © 2010 The State of Queensland  
StreetPro © 2010 Pitney Bowes Software Pty Ltd  
Roads, Rivers - © 2010 PSMA Australia Pty Ltd

AECOM does not warrant the accuracy or completeness of information displayed in this map and any person using it does so at their own risk. AECOM shall bear no responsibility or liability for any errors, faults, defects, or omissions in the information.



Scale: 1:30,000  
(when printed at A3)

0 500 1,000 2,000 Metres

Water Depth (m)

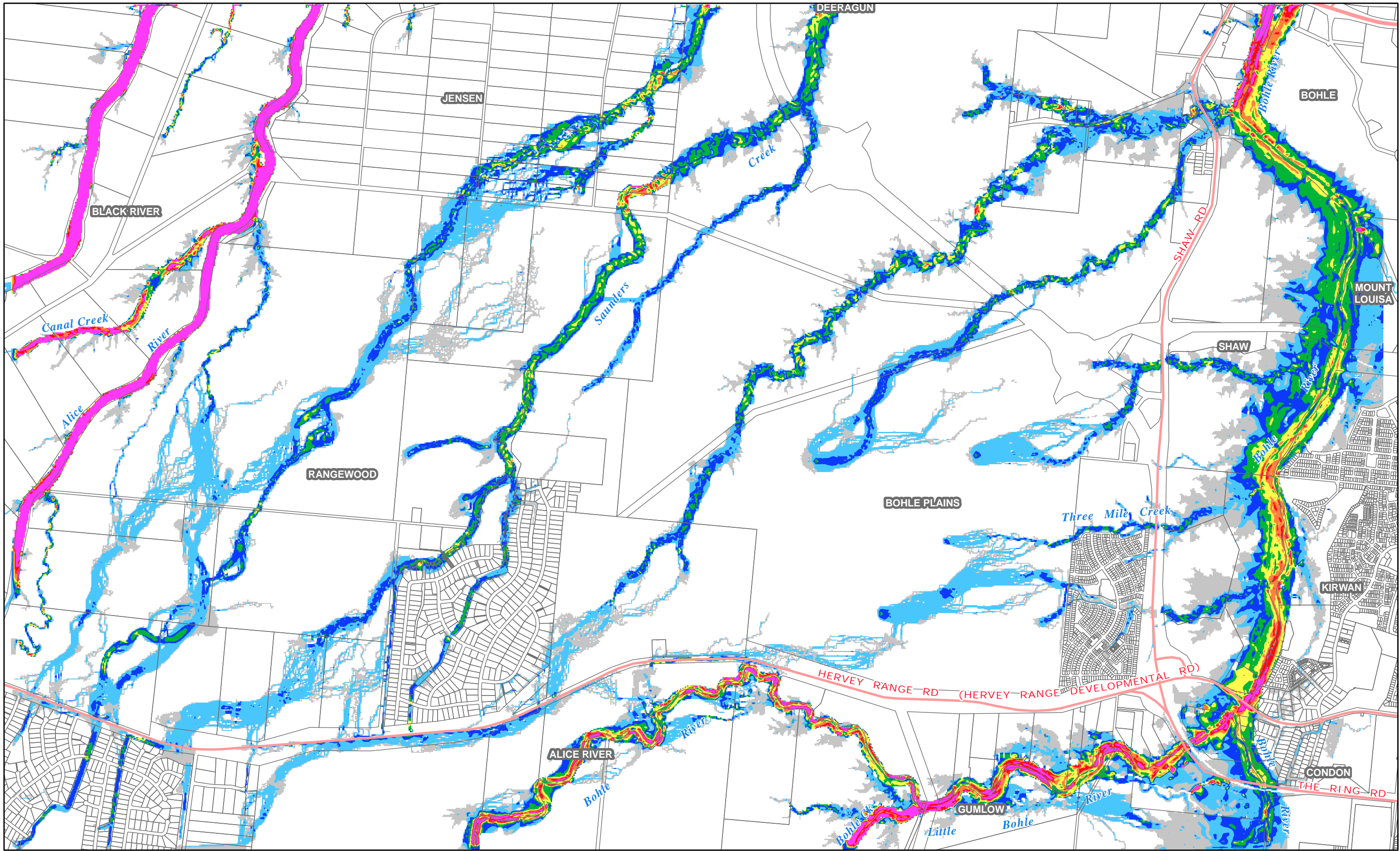


0 - 0.3  
0.3 - 0.5  
0.5 - 0.75  
0.75 - 1  
1 - 1.5  
1.5 - 2  
2 - 3  
> 3

UPPER BOHLE PLAINS  
FLOOD STUDY  
100 year 24 hr ARI Water Depths  
Urbanised Case

Figure B26





PROJECT ID 60212663  
LAST MODIFIED dxe 14-June-2011  
FILE NAME 60212663\_WR\_AP\_27



Cadastre - © 2010 The State of Queensland  
StreetPro © 2010 Pitney Bowes Software Pty Ltd  
Roads, Rivers - © 2010 PSMA Australia Pty Ltd

AECOM does not warrant the accuracy or completeness of information displayed in this map and any person using it does so at their own risk. AECOM shall bear no responsibility or liability for any errors, faults, defects, or omissions in the information.



Scale: 1:30,000  
(when printed at A3)

0 500 1,000 2,000 Metres

Velocity (m/s)



0 - 0.25  
0.25 - 0.50  
0.50 - 0.75  
0.75 - 1.00  
1.00 - 1.25  
1.25 - 1.50  
1.50 - 1.75  
1.75 - 2.00  
Above 2

UPPER BOHLE PLAINS  
FLOOD STUDY  
100 year 24 hr ARI Velocity  
Urbanised Case

Figure B27