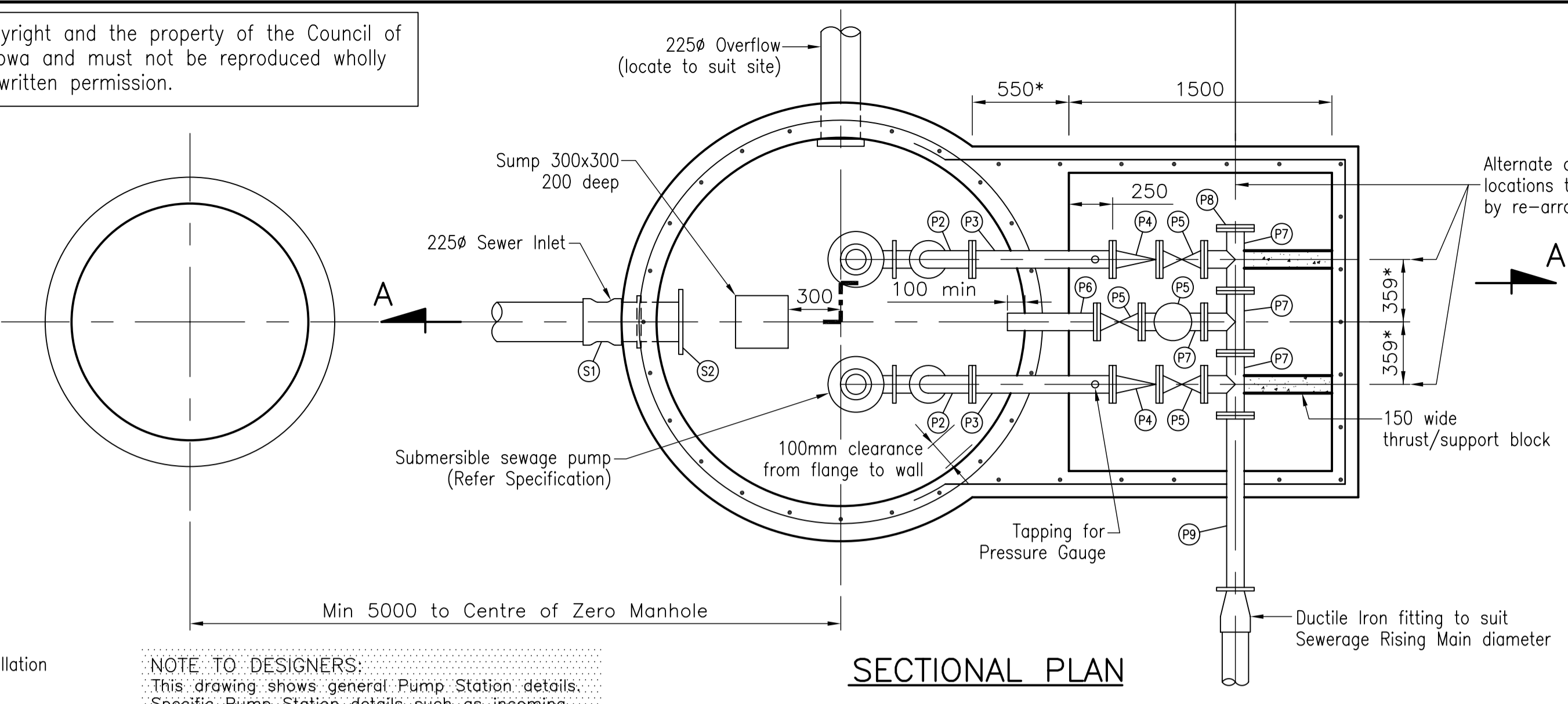
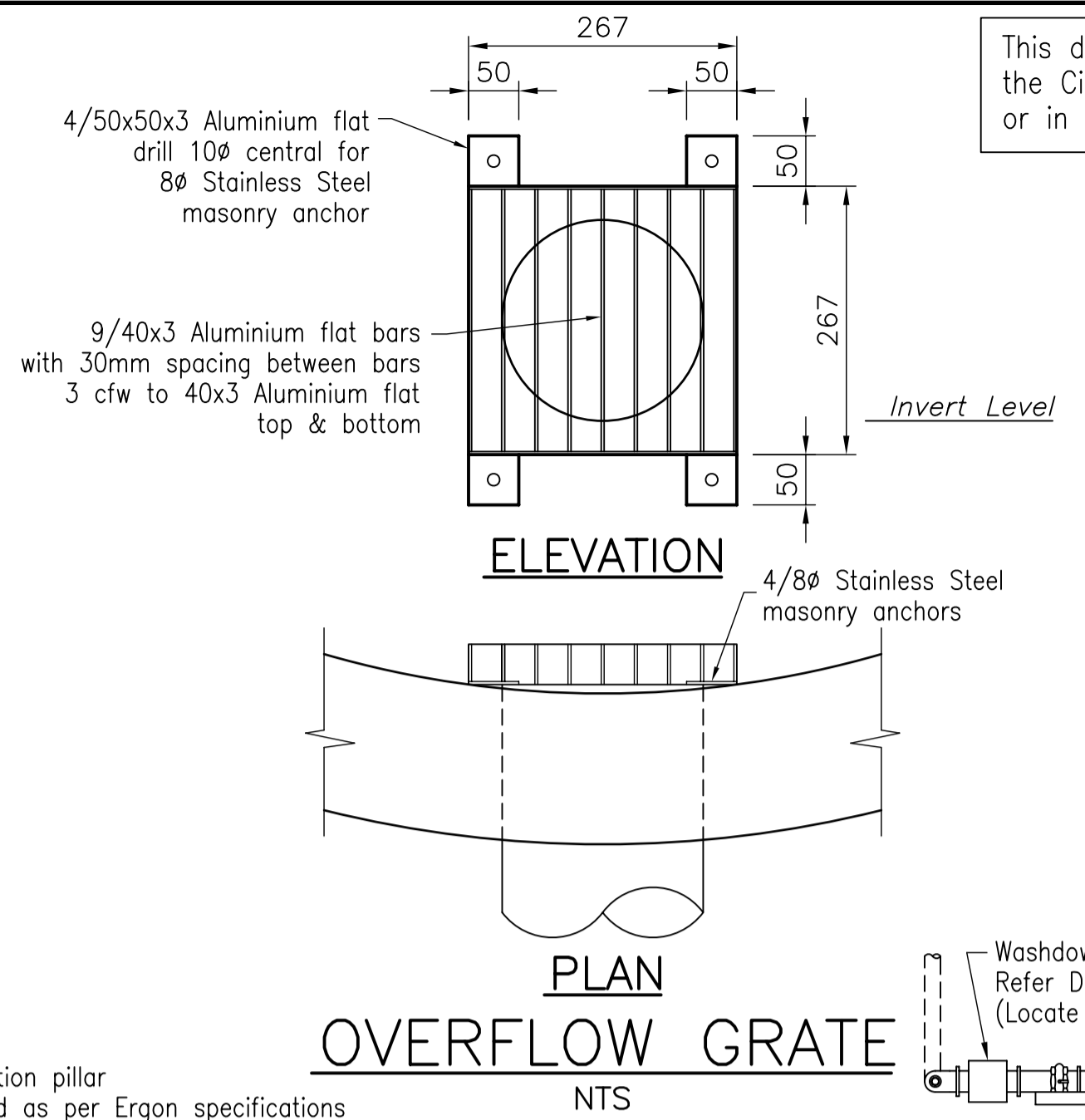


This drawing is copyright and the property of the Council of the City of Thuringowa and must not be reproduced wholly or in part without written permission.

TABLE OF LEVELS		
Level	Description	RL (m)
A	Finished structure level	
B	Finished surface level	
C	Inlet invert level	
D	& alarm activation level	
E	Standby pump start level	
F	Duty pump start level	
G	Pump stop level	
H	Floor level	
	Outlet centreline level	



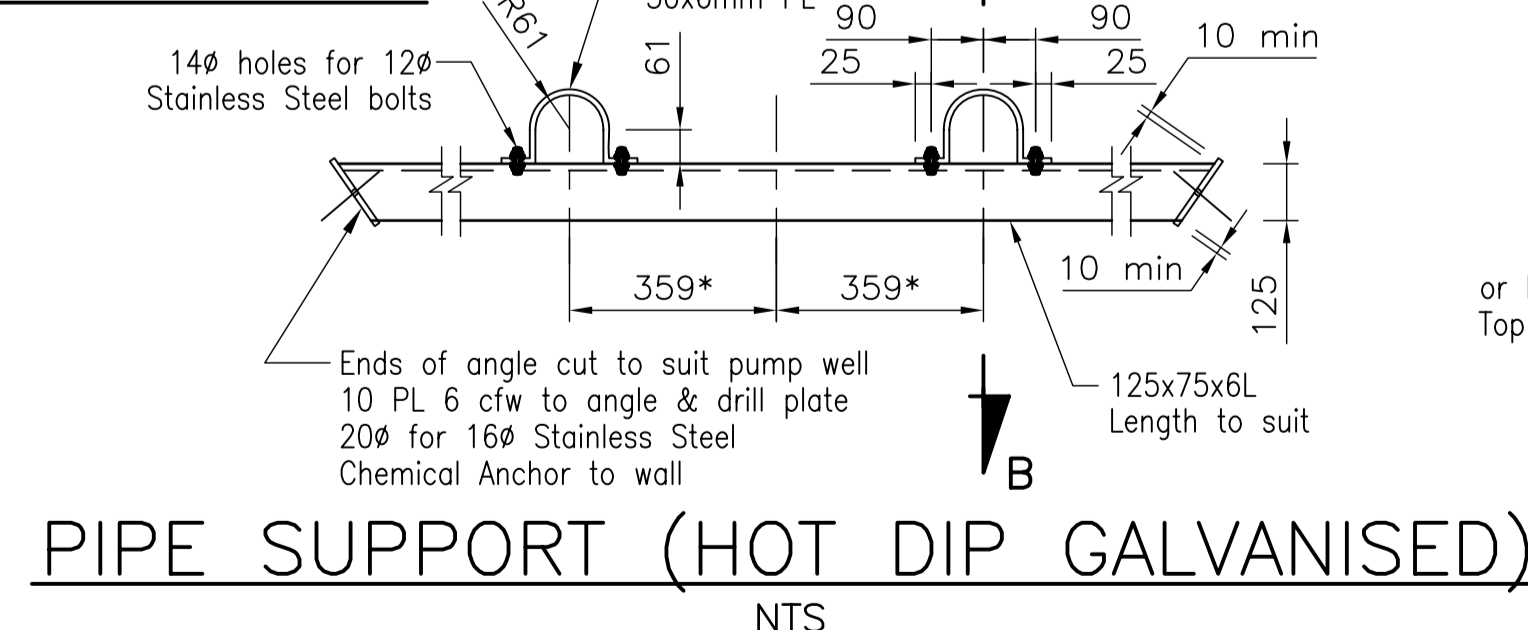
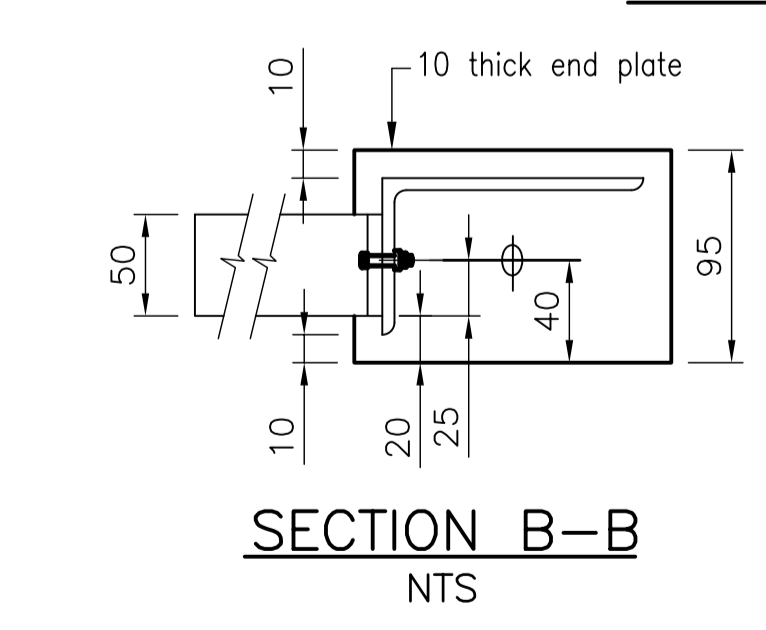
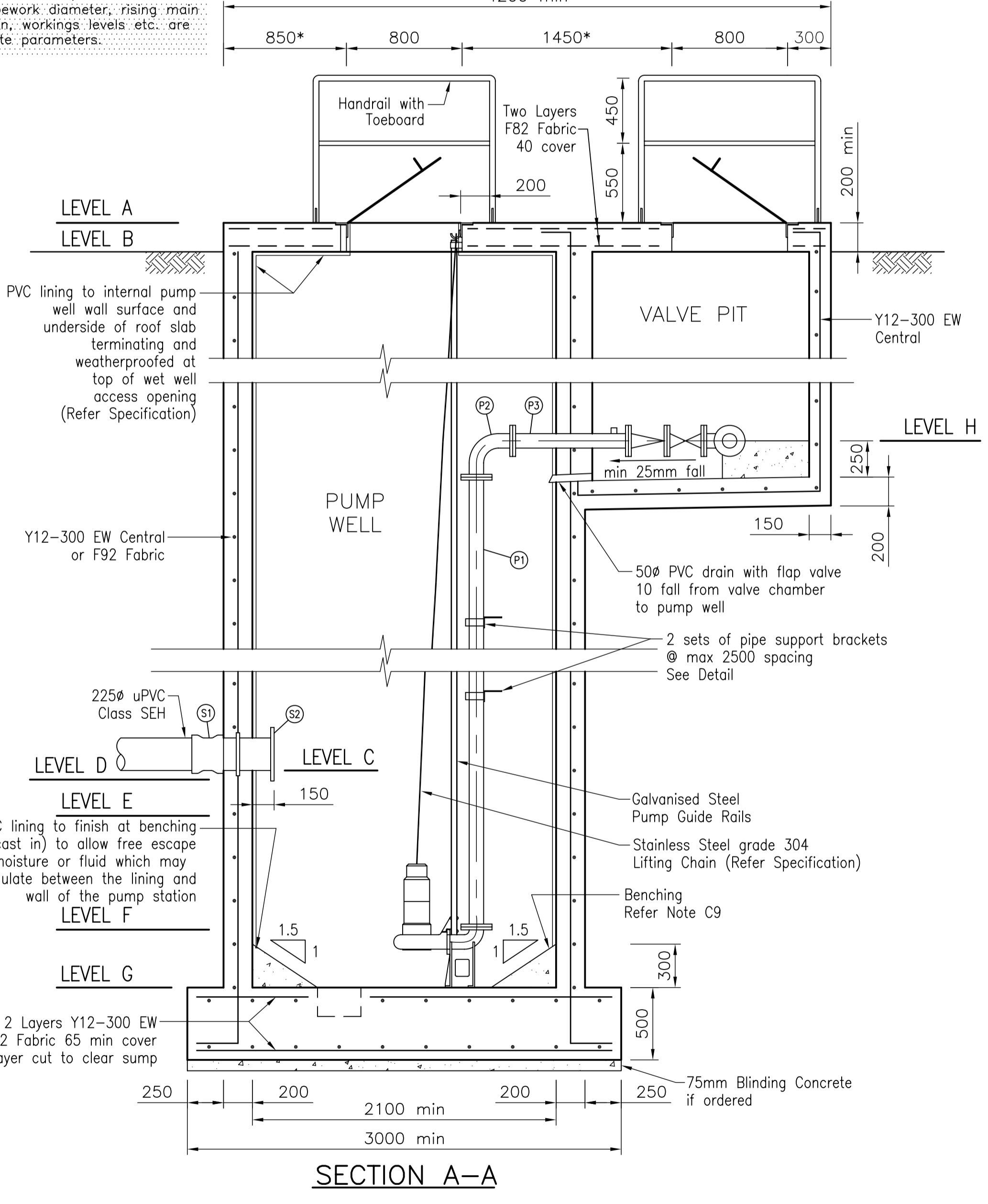
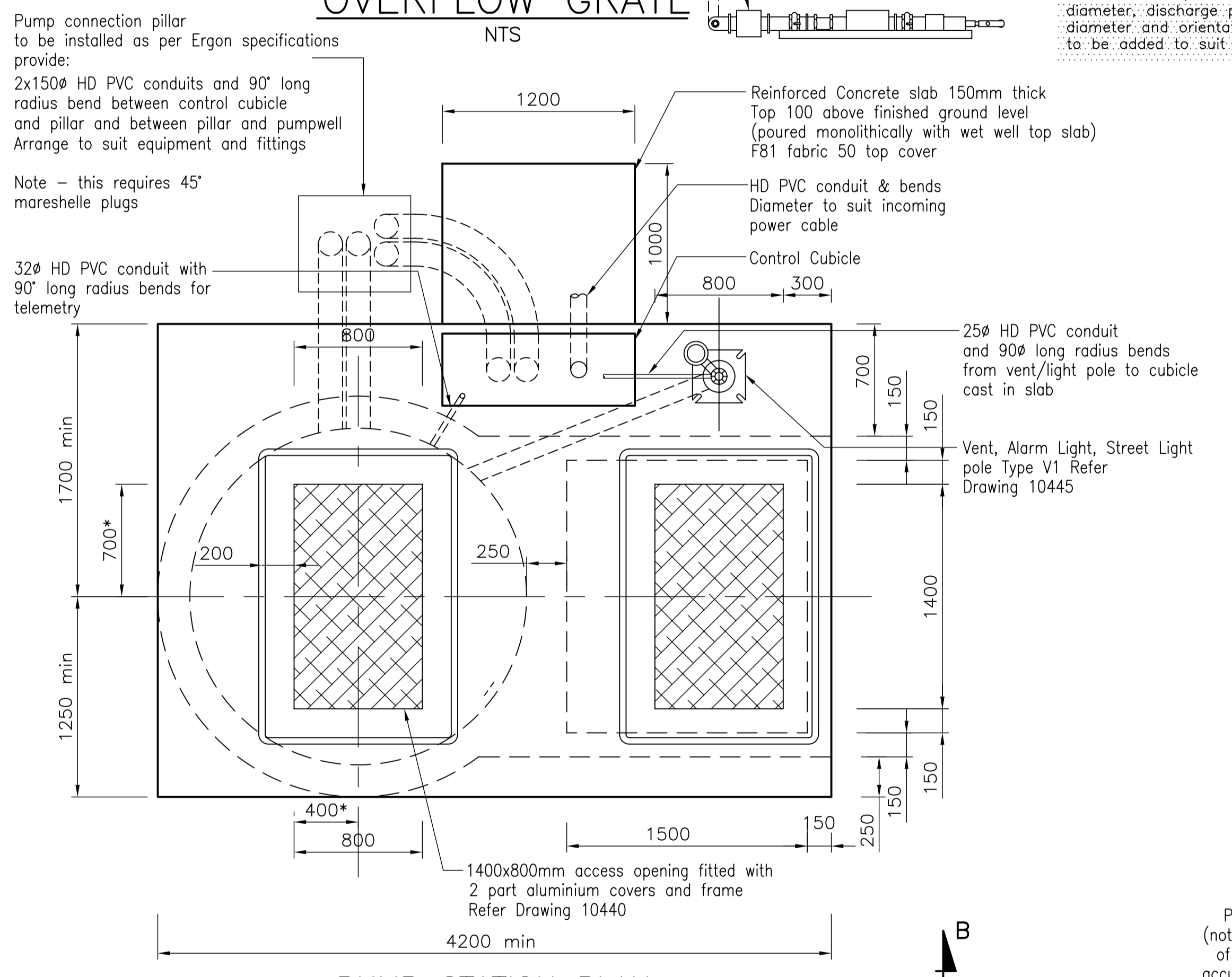
SCHEDULE OF PIPES & FITTINGS			
Item	Minimum Dia	Description	No. Off
P1	100	DICL Straight Pipe (fl x fl) length to suit	As Required
P2	100	90° DI bend (fl x fl)	2
P3	100	DICL Straight Pipe (fl x fl) length to suit tapped 15 BSP	2
P4	100	CI Reflux Valve (fl x fl) Class 14	2
P5	100	CI Sluice Valve (fl x fl) Class 14 with hand wheel	4
P6	100	DICL Straight Pipe (fl x sp) length to suit	1
P7	100x100	DI Tee (fl x fl)	4
P8	100	DI Blank Flange	1
P9	100	DICL Straight Pipe (fl x fl) 1000 long	1
S1	225	DI connector (250 OD - 259 OD (so x so))	1
S2	225	DICL pipe (fl x sp) 550 long, thrust fl 250 from flanged end	1

**NOTE TO DESIGNERS:**  
This drawing shows general Pump Station details. Specific Pump Station details such as incoming sewer diameter, overflow location, level and diameter, discharge pipework, diameters, rising main diameter and orientation, workings levels etc. are to be added to suit site parameters.

- NOTES**
- GENERAL**
- G1. All dimensions to be checked by the Contractor before construction.
  - G2. Workmanship and materials shall be in accordance with the relevant current SAA codes including all amendments, and the requirements of the relevant Statutory Authorities.
  - G3. All dimensions are in millimetres unless noted otherwise.
  - G4. All dimensions marked thus \* to be confirmed to suit the pumps and control equipment to be installed.
  - G5. Cylindrical section of station may be constructed as a caisson subject to approval of design provided by Contractor. Pre-cast walls are not acceptable.
  - G6. Minimum fall of 25mm to be provided from all corners of valve pit to the drain.
  - G7. Cable conduits to be cast in as shown to suit the pumps etc. to be installed. Conduits to terminate 50mm above finished surface level.
  - G8. Straight pipes to be cement lined internally and epoxy coated externally. Valves and fittings to be coated internally and externally with fusion bonded nylon or epoxy. Refer Specification.
  - G9. Ladder as specified to conform to AS1657, AS1650 and AS/NZS 3500.2.2:1996
- FOUNDATIONS**
- F1. All excavations to be inspected and approved by Superintendent before concrete is placed.
- CONCRETE**
- C1. Minimum clear cover (mm) as found on site to all reinforcement to be as shown on drawings.
  - C2. No holes, chases or embedment of pipes other than those shown on the drawings to be made in concrete members without prior approval of the Superintendent.
  - C3. Construction joints to be properly formed and used only where shown or specifically approved by the Superintendent.
  - C4. Exposed edges to be chamfered 20mm.
  - C5. Concrete components and quality to be as follows:

Element	F'c MPa	Slump	Max Aggregate
All	N32	80mm	20mm

- C6. Curing (a) Initial Curing - commence curing immediately after finishing. Keep concrete continuously wet by ponding or continuous spraying for 2 days.  
(b) Final Curing - prevent concrete from drying out for a further 14 days.
  - C7. A 75mm thick blinding course of grade N15 concrete to be provided below base level if directed by Superintendent.
  - C8. Cored holes to be filled with approved non-shrink mortar after installation of pipework.
  - C9. The extent of concrete benching is to be as directed by the Superintendent to suit pumps to be installed.
- REINFORCEMENT**
- R1. Reinforcement is represented diagrammatically and not necessarily shown in true projection.
  - R2. Splices in reinforcement to be made only in the positions shown or as otherwise approved by the Superintendent. Where unscheduled laps are authorised in bars 20mm or less in diameter the bars are to be lapped the following diameters:  
R10 65  
Y Grade 50  
Laps in mesh to be spacing of transverse wires plus 25mm unless otherwise shown.
  - R3. Welding of reinforcement is not to be performed without the approval of the Superintendent.
  - R4. All reinforcement to be supported in its correct position during concreting by approved bar chairs, spacers or support bars.
  - R5. Reinforcement symbols:  
R Grade 230 plain round bar to AS 1302  
F Hard drawn steel wire reinforcing fabric to AS 1304  
Y Grade 410 deformed bar to AS 1302
  - R6. Cogs and hooks to be standard unless shown otherwise.
  - R7. Reinforcement to be cut or bent to clear cored holes.



No.	DATE	DESCRIPTION	AP'D
E	02/3/2006	MODIFICATIONS TO PUMP STATION PLAN	MJC
D	11/7/2005	SECTION A-A PUMP WELL - 200 MIN CHANGED TO 200	DPM
C	27/3/2001	MODIFICATIONS TO TEXT THROUGHOUT DRAWING	DPM
B	23/3/2000	DELETE VALVE COVER BOX, ADD 1X150 CONDUIT	
	1/7/99		
		REVISIONS	

**NOTES:** Not to Scale  
Dimensions in millimetres unless noted otherwise  
Supersedes 10047B

**DISCLAIMER:** The Council of the City of Thuringowa shall have no liability or responsibility to the user or any other person or entity with respect to any liability, loss or damage caused or alleged to be caused, directly or indirectly, by the adoption and use of these Standard Drawings. Persons must not rely on these Standard Drawings as the equivalent of, or a substitute for, project-specific design and assessment by an appropriately qualified professional.

**THE CITY OF THURINGOWA**

86 Thuringowa Drive  
Thuringowa Central, QLD, 4817  
Phone : (07) 4773 8411  
Fax : (07) 4773 8571  
Email : council@thuringowa.qld.gov.au  
Web : www.thuringowa.qld.gov.au

DRAWN: MAL  
Engineer Approved: Original signed by S.Gray Date: 02/3/2006

CHECKED: WJP  
Director Approved: Original signed by C.Phillips Date: 02/3/2006

**SMALL SEWERAGE PUMP STATIONS  
TYPICAL PLANS, SECTIONS AND DETAILS**

**STANDARD DRAWING  
SEWERAGE**

**10435**

A B C D E

**STANDARD DRAWING  
SEWERAGE**

**10435**

A B C D E