



### PALM LAWN

Palm species requiring an open aspect can be found in the Palm Lawn. From soaring Livistona and Washingtonia species to brilliantly coloured Bismarckia and Latania, the collection is also host to several rare and exotic specimens. A Travellers Palm and the Panama Hat Palm are also planted in the lawn; although neither are true palms.

### ROSE AND HERB GARDENS

The Isabella Phillips Rose Garden houses prolific roses that are popular for photographs and ceremonies. Under the auspices of the Townsville Botanic Gardens, the Herb Garden is maintained by members of the Herb Society of North Queensland where they have established an excellent representation of herbs that grow well in the prevailing climate.



### MAGNIFICENT TREES

The gardens contain some fine, mature examples of noble tropical trees that help create a cool, shady environment in many locations, whilst providing structure and grandeur. Some of the most notable specimens are the Figs, Sea Almonds, Hoop Pine (with Cyclone Althea lean and Cycone Yasi twist) Mango (believed to be the oldest specimen in Queensland), Moreton Bay Ash (remnant specimen), Milky Pine (the largest is believed to be a remnant) and the magnificent Rain Tree at Kennedy Lane Entrance (120 - 140 years old).



The Townsville Botanic Gardens, as developed by Townsville City Council, includes Anderson Gardens, Queens Gardens and the Palmetum.

Each garden is unique in character but all contain fine examples of tropical vegetation that will be of interest to plant enthusiasts and casual visitors alike.

### FOR MORE INFORMATION ABOUT TOWNSVILLE BOTANIC GARDENS CONTACT

Townsville Botanic Gardens  
Townsville City Council  
PO Box 1268 Townsville Qld 4810

☎ 13 48 10  
✉ [enquiries@townsville.qld.gov.au](mailto:enquiries@townsville.qld.gov.au)

IF YOU DO NOT WISH TO KEEP THIS BROCHURE PLEASE RETURN IT FOR REUSE.



# Queens Gardens

## A BOTANIC HERITAGE EXPERIENCE

**LOCATION** Townsville, North Queensland. Entrance is off Paxton Street, Gregory Street and Kennedy Lane in the suburb of North Ward.

**AREA** 4 Hectares, gently sloping with good access to all areas.

**CLIMATE** Townsville's average annual rainfall is 1125mm, with marked seasonality and high variability. Approximately 70% falls January to March, with useful falls of 20mm or more rare from May to October. Rainfall events tend to be of high intensity and short duration. Summers are hot and humid. The mean daily January max. is 31.3°C with the relative humidity averaging 65-70%. The average minimum for the coldest month (July) is 13.5°C.

**PLANT COLLECTION** Queens Gardens is a botanic garden containing a fine collection of ornamental tropical plants. Desirable, rare and unusual plants are displayed alongside the most spectacular flowering, foliage and fruiting specimens. Tropical flowering trees, heliconias, palms and the Frangipani collection are particularly impressive.

**ESTABLISHMENT DATE** Initiated in 1870 as a trial garden for European settlement.

**FACILITIES** Public conveniences, picnic areas, children's playground and aviaries.





# Queens Gardens

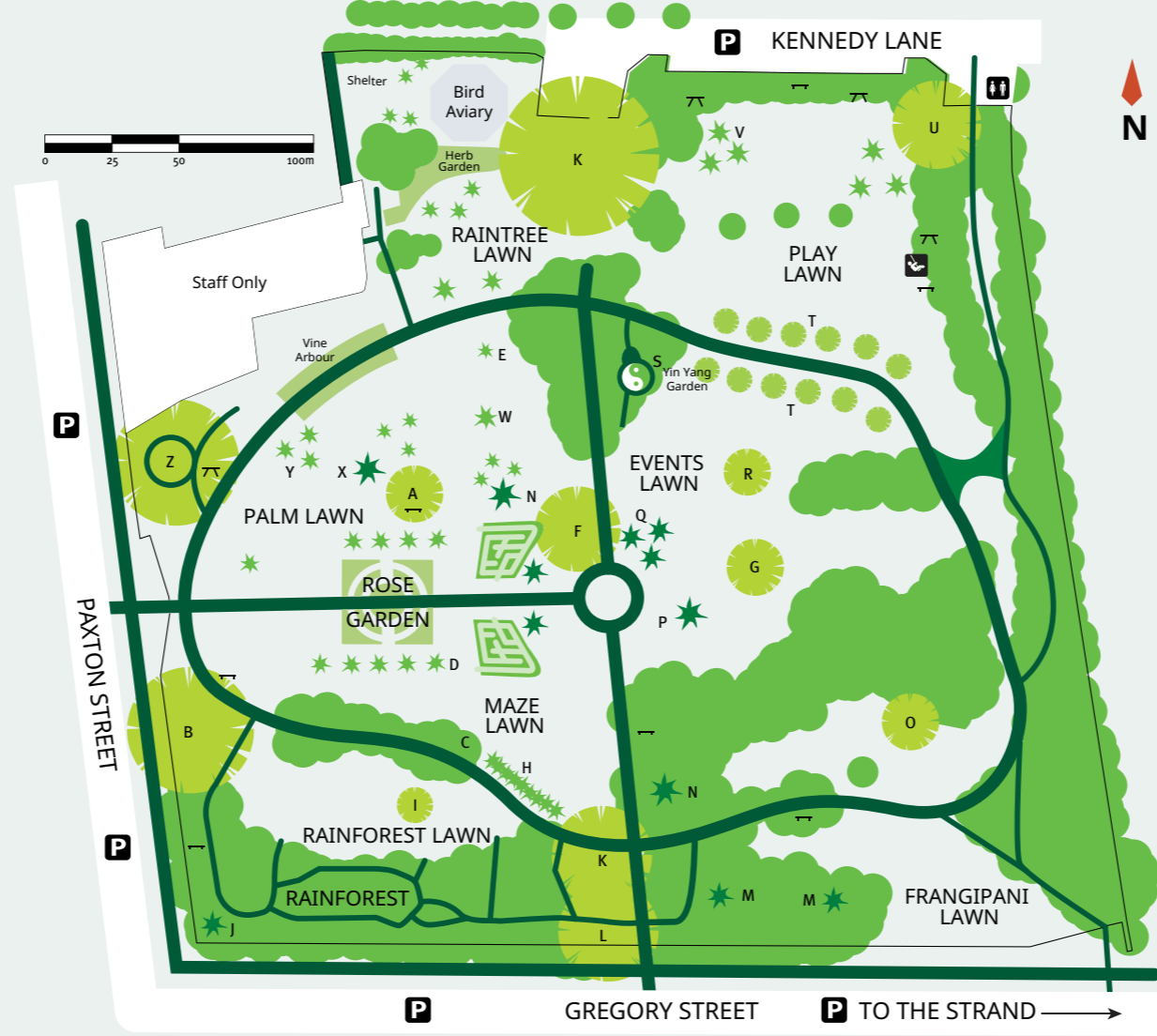
A BOTANIC HERITAGE EXPERIENCE

Initiated in 1870, Queens Gardens is the oldest Botanic Garden in Townsville.

Now covering 4 hectares, reduced from an original 40Ha, it is considered a fine example of a tropical colonial garden of that era. Originally established as a trial garden for European settlement, plantings included timber and fruit trees. Today the emphasis of the collection is on colonial ornamental plants with colourful, attractive flowers, foliage or fruit.

On 2 February 2011, Townsville was battered for several hours with Cyclone Yasi's Category 4 strength winds; a third of the trees at this site were lost as a result.

Townsville residents use the luxuriant gardens for leisure and recreation, while the City Council and community groups utilise its green splendour to stage a variety of special events.



## Plants of Interest

- |                                     |                          |                                     |                     |
|-------------------------------------|--------------------------|-------------------------------------|---------------------|
| A. <i>Flacourtia indica</i>         | Governor's Plum          | N. <i>Ficus rubiginosa</i>          | Rusty Fig           |
| B. <i>Ficus virens var. virens</i>  | Australian Strangler Fig | O. <i>Agathis robusta</i>           | Kauri Pine          |
| C. <i>Cananga odorata</i>           | Ylang Ylang              | P. <i>Dyopsis leptocheilos</i>      | Redneck Palm        |
| D. <i>Carludovica palmata</i>       | Panama Hat Palm          | Q. <i>Delonix regia</i>             | Poinciana           |
| E. <i>Mangifera indica</i>          | Common Mango             | R. <i>Bambusa ventricosa</i>        | Buddha Belly Bamboo |
| F. <i>Tamarindus indica</i>         | Tamarind                 | S. <i>Michelia champaca</i>         | Champak             |
| G. <i>Cyrtostachys renda</i>        | Lipstick Palm            | T. <i>Bombax ceiba</i>              | Silk Cotton Tree    |
| H. <i>Corymbia tessellaris</i>      | Moreton Bay Ash          | U. <i>Attalea cohune</i>            | Cohune Palm         |
| I. <i>Elaeocarpus angustifolius</i> | Blue Quandong            | V. <i>Bismarckia nobilis</i>        | Bismarck Palm       |
| J. <i>Samanea saman</i>             | Rain Tree                | W. <i>Ravenala madagascariensis</i> | Traveller's Palm    |
| K. <i>Alstonia scholaris</i>        | Milky Pine               | X. <i>Hyophorbe lagenicaulis</i>    | Bottle Palm         |
| L. <i>Pandanus papuana</i>          | Papuan Pandan            | Y. <i>Ficus benjamina</i>           | Weeping Fig         |
| M. <i>Araucaria cunninghamii</i>    | Hoop Pine                |                                     |                     |

## Feature Areas within the garden

### BIRD AVIARY

The Bird Aviary within Queens Gardens was first established around 1938. Since then, it has received multiple upgrades, with the latest in February 2020. It is home to two cockatoos, a galah and a corella, and other bird species such as rainbow lorakeets and Gouldian finches. The aviary remains a popular attraction for locals and tourists.



### RAINFOREST

This compact representation of a tropical rainforest hosts a spreading canopy of Strangler Fig (*Ficus virens var. virens*), Blue Quandong (*Elaeocarpus angustifolius*), Milky Pine (*Alstonia scholaris*) and Raintree (*Samanea saman*). A meandering path network leads the visitor through lush under-plantings of interesting specimens. The central area was severely damaged by Cyclone Yasi and replanting of this section of the Rainforest was carried out with funding and support from Stockland Ltd.



### FRANGIPANI COLLECTION

The floral emblem of Queens Gardens is represented by a collection of Frangipani (*Plumeria*) species that occur naturally in the wild, along with a selection of the most magnificent cultivars and rarities. Perfect for the dry tropical climate of Townsville, Frangipani's exude the colonial heritage and ambience of this garden.



### EVENTS LAWN

The Events Lawn is the premier location for a variety of functions in Queens Gardens. A tranquil atmospheric backdrop for theatre, music and social events is provided by a collection of magnificent shade and timber trees which are the remnants from the original economic botany theme.

