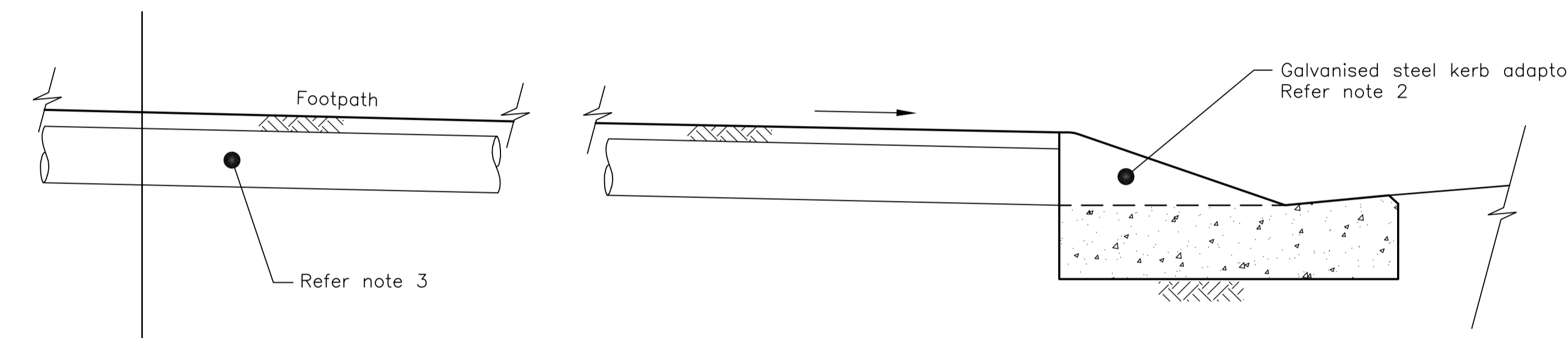
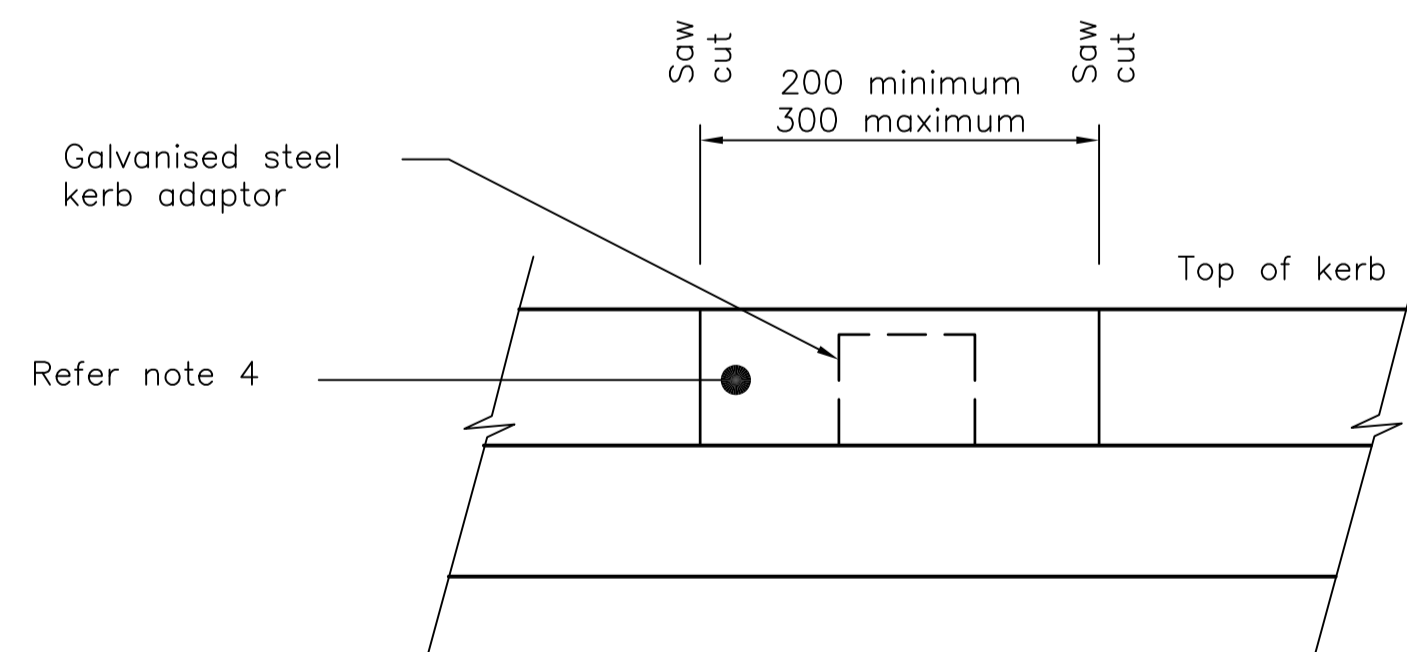


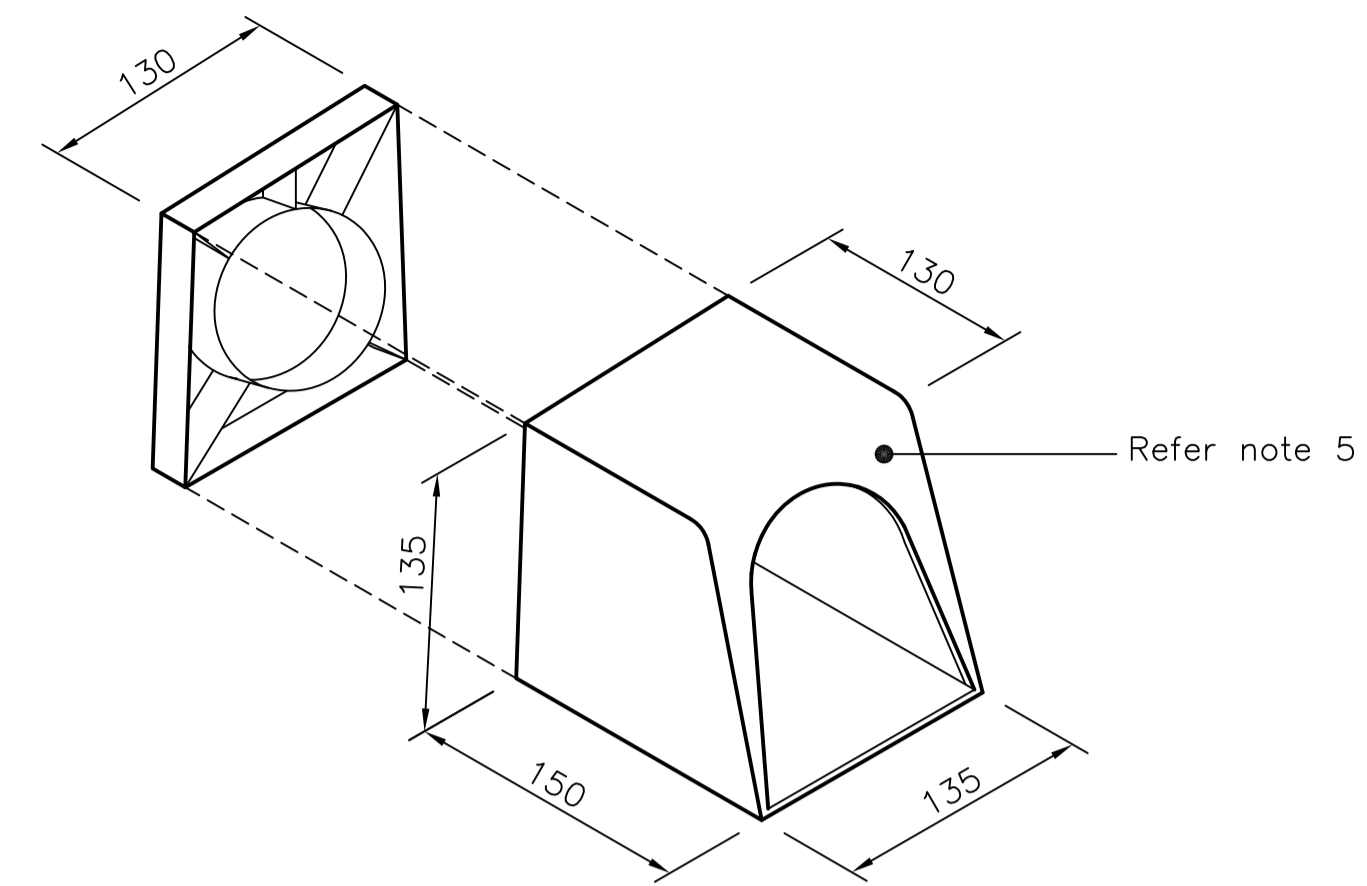
BARRIER KERB AND CHANNEL
SECTIONAL ELEVATION



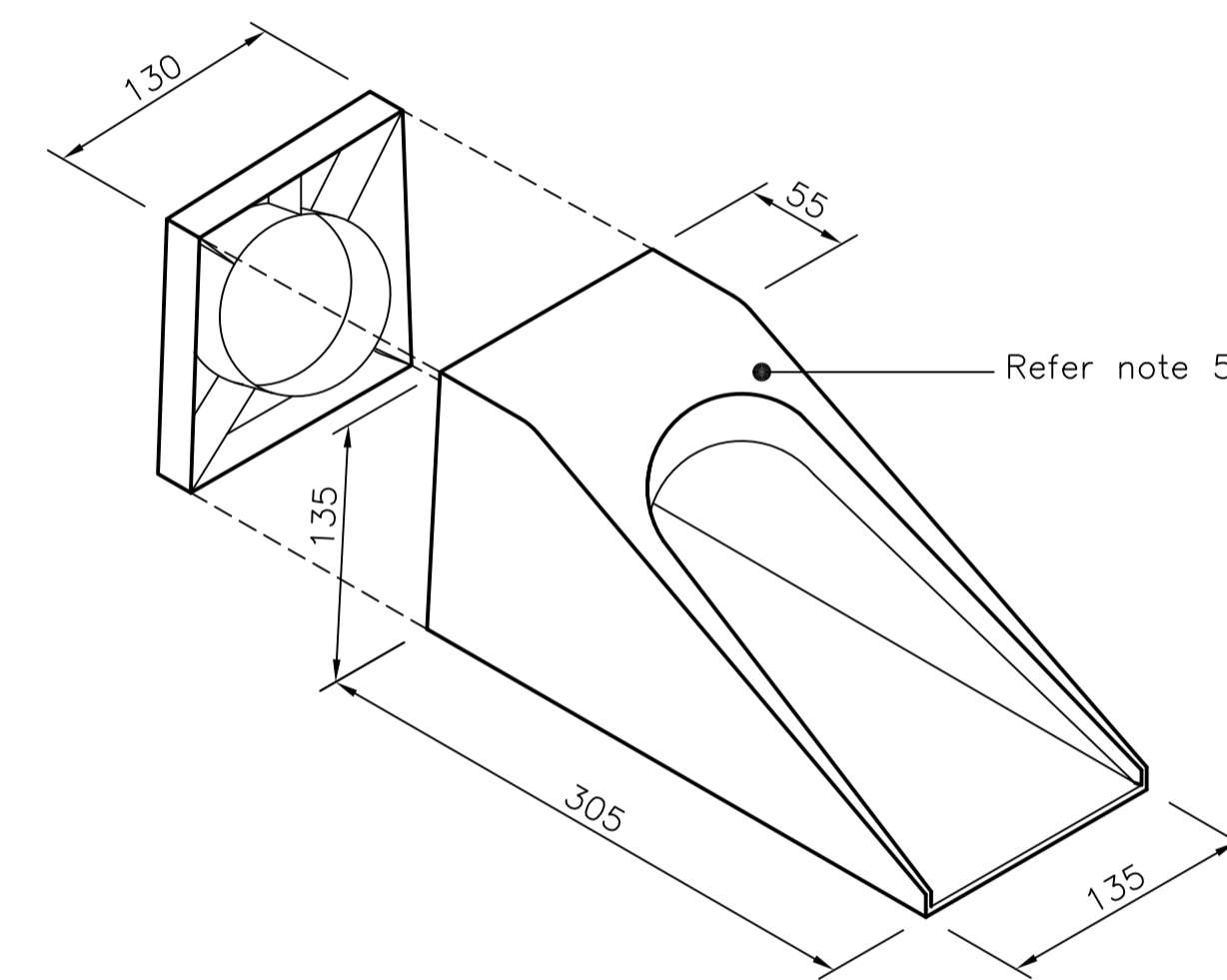
LAYBACK KERB AND CHANNEL
SECTIONAL ELEVATION



EXISTING KERB AND CHANNEL
FRONT ELEVATION



BARRIER KERB ADAPTOR
Typical only 90mm and 100mm galvanised steel



MOUNTABLE KERB ADAPTOR
Typical only 90mm and 100mm galvanised steel

NOTES

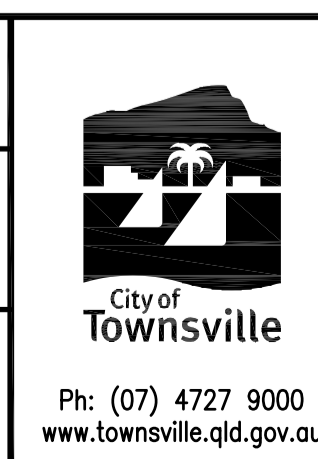
1. All dimensions are in millimetres unless noted otherwise.
2. Standard 90mm or 100mm galvanised steel Adaptor to suit Barrier or Layback kerb and channel.
3. Pipe across footpath to be laid with the maximum available cover, and with a minimum grade of 1 in 80.
4. At existing kerb and channel, saw cut kerb as necessary. Reinstat with N20/10 concrete in accordance with AS1379 and AS3600 to clean concrete faces.
5. Use kerb adaptors that match kerb profile.
6. Refer Job drawings/specifications for option to be adopted.

No.	DATE	DESCRIPTION	AP'D
A	12/02/10	ORIGINAL ISSUE	
REVISIONS			

NOTES : Supercedes COT Dwg 10091

Full Size A1
Not to Scale

DRAWN: DESIGN OFFICE
CHECKED: WJP
Design Engineer Approved: Original signed by R. COATES
Date: 12/02/2010
Manager Approved: Original signed by B. SUE
Date: 12/02/2010



**KERB AND CHANNEL
DRAINAGE CONNECTIONS**

**STANDARD
DRAWING
ROADWORKS**
SD-085 | A