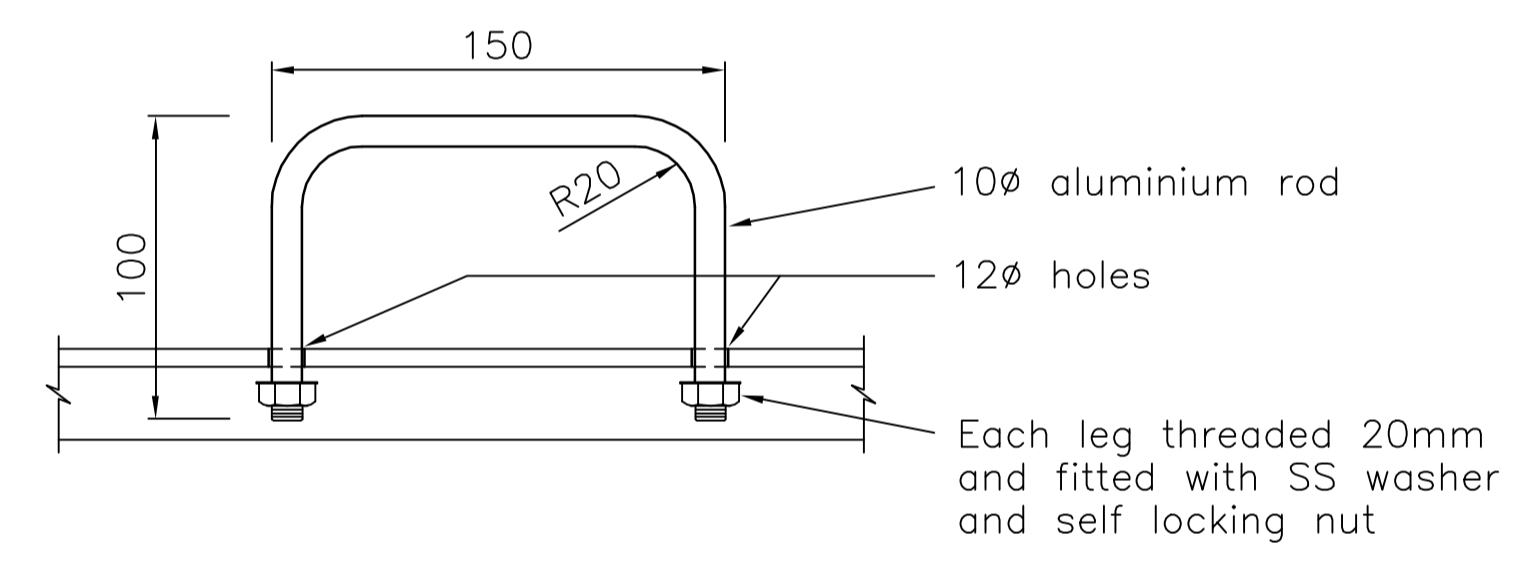
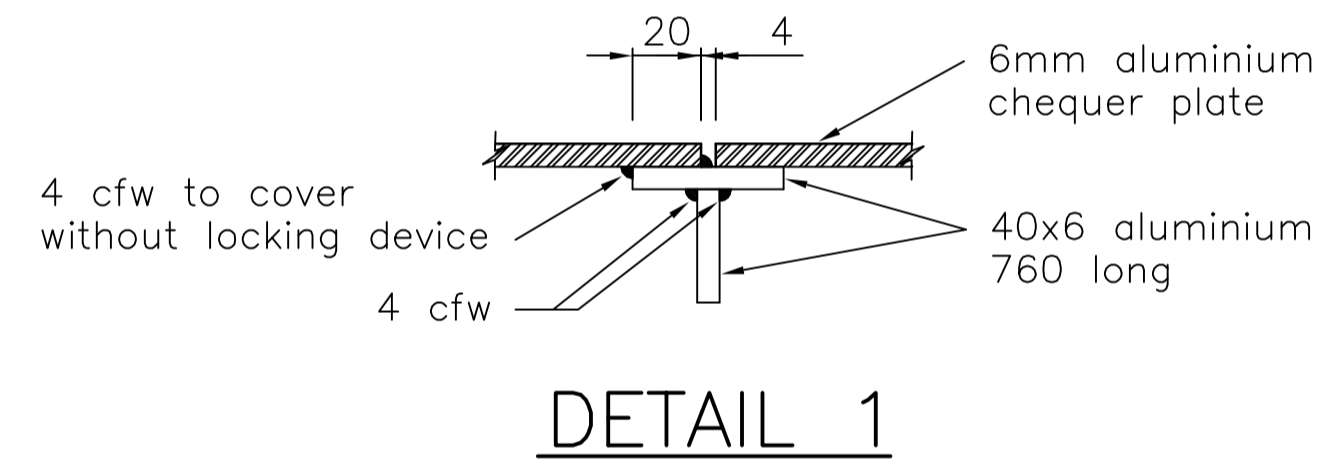
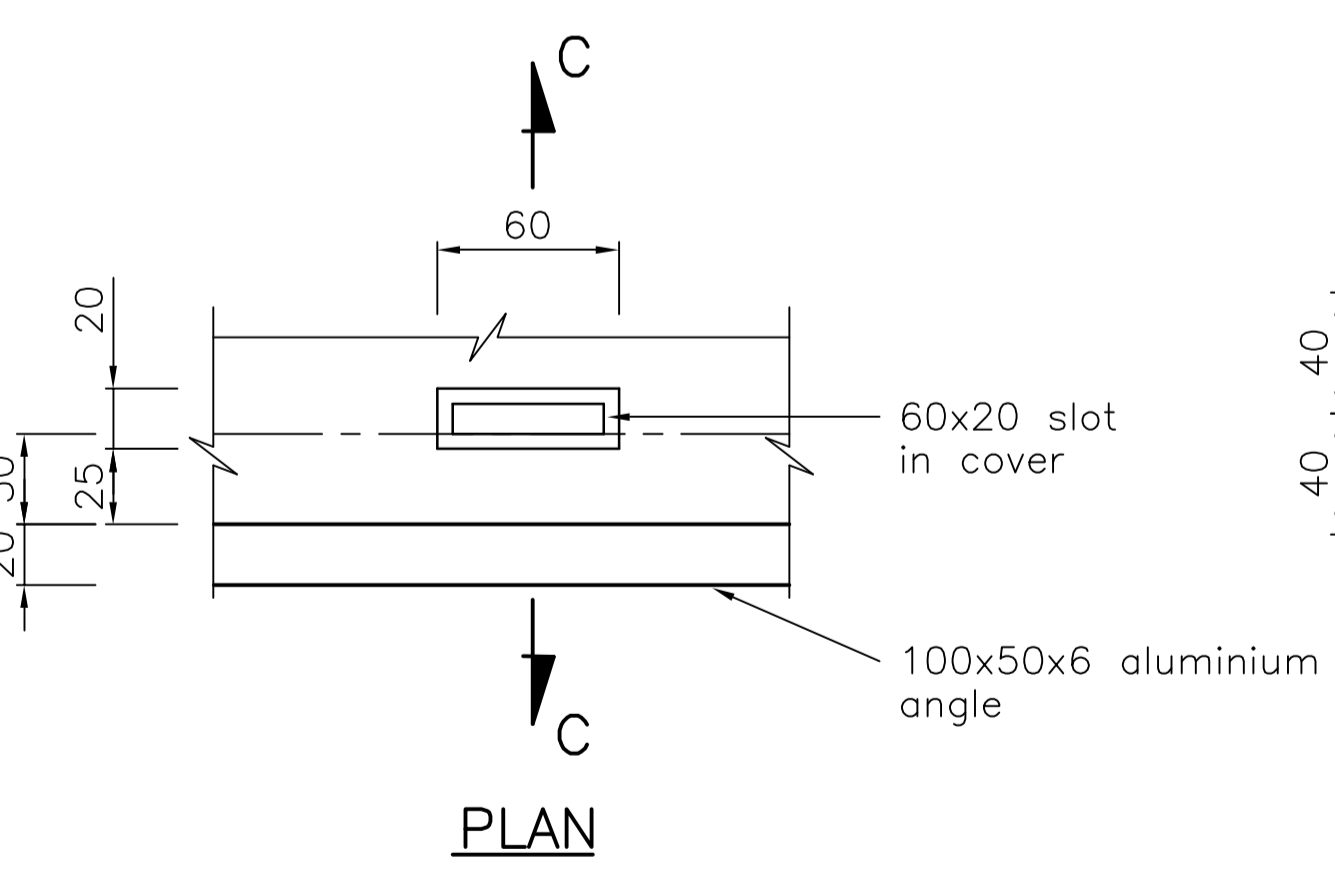


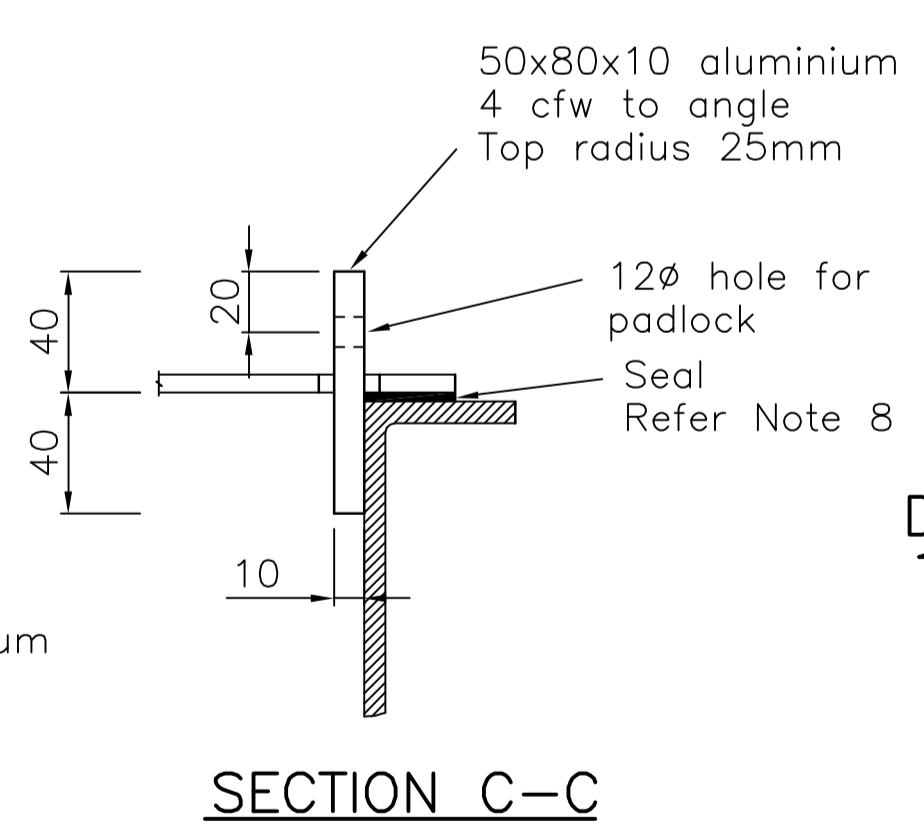
- NOTES**
1. Main dimensions to be increased if required to ensure clearance for pump units.
 2. Dimensions of openings in roof slab to be verified prior to commencement of fabrication.
 3. Covers are not to be subjected to vehicle loads.
 4. Welding of all components to be carried out in sequence to avoid distortion of covers and frames. Welds to be four continuous fillet weld. Frame joints to be mitre cut and butt welded.
 5. Hinge pin nuts to be single self locking or double lock nuts. Stainless steel items to be Grade 316.
 6. Fasteners to concrete to be approved chemical or masonry anchors stainless steel Grade 316 embedded depth to be in accordance with manufacturer's directions.
 7. All aluminium components to be marine grade alloy.
 8. Seal to be 30mm x 3mm thick foam neoprene or approved alternative bonded to edges of covers seating on frame.
 9. Chain/Cable hooks to be positioned opposite hinge of lids and adjacent to control cubical.



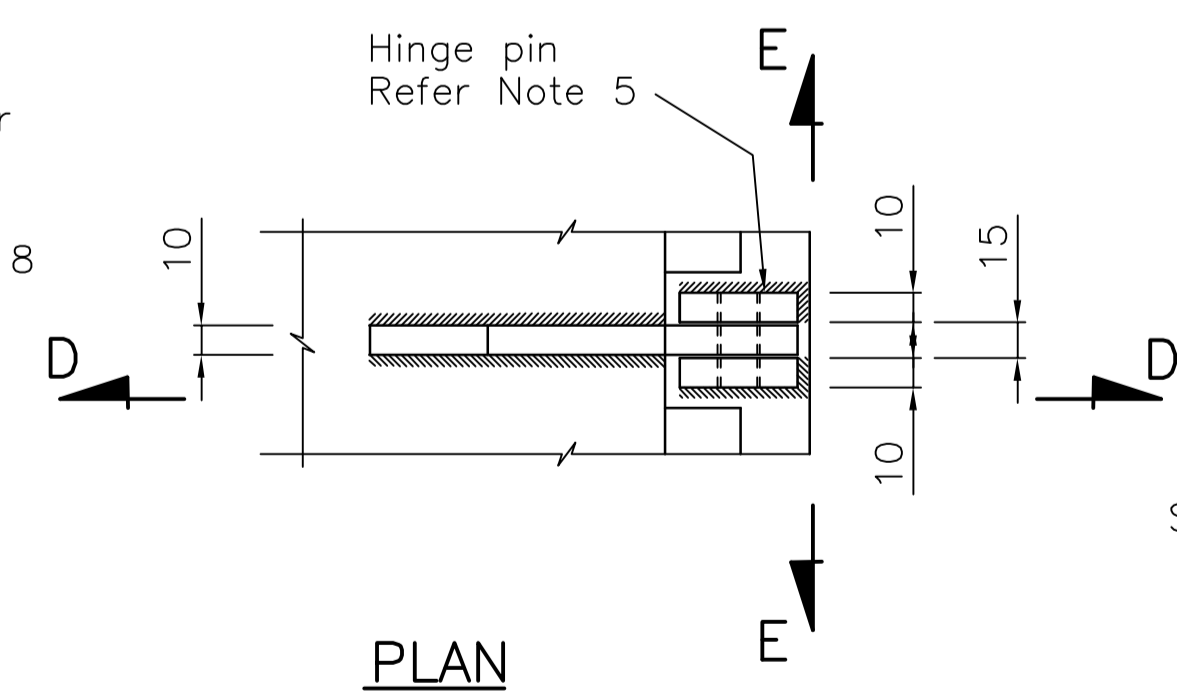
DETAIL 2 - LIFTING HANDLE



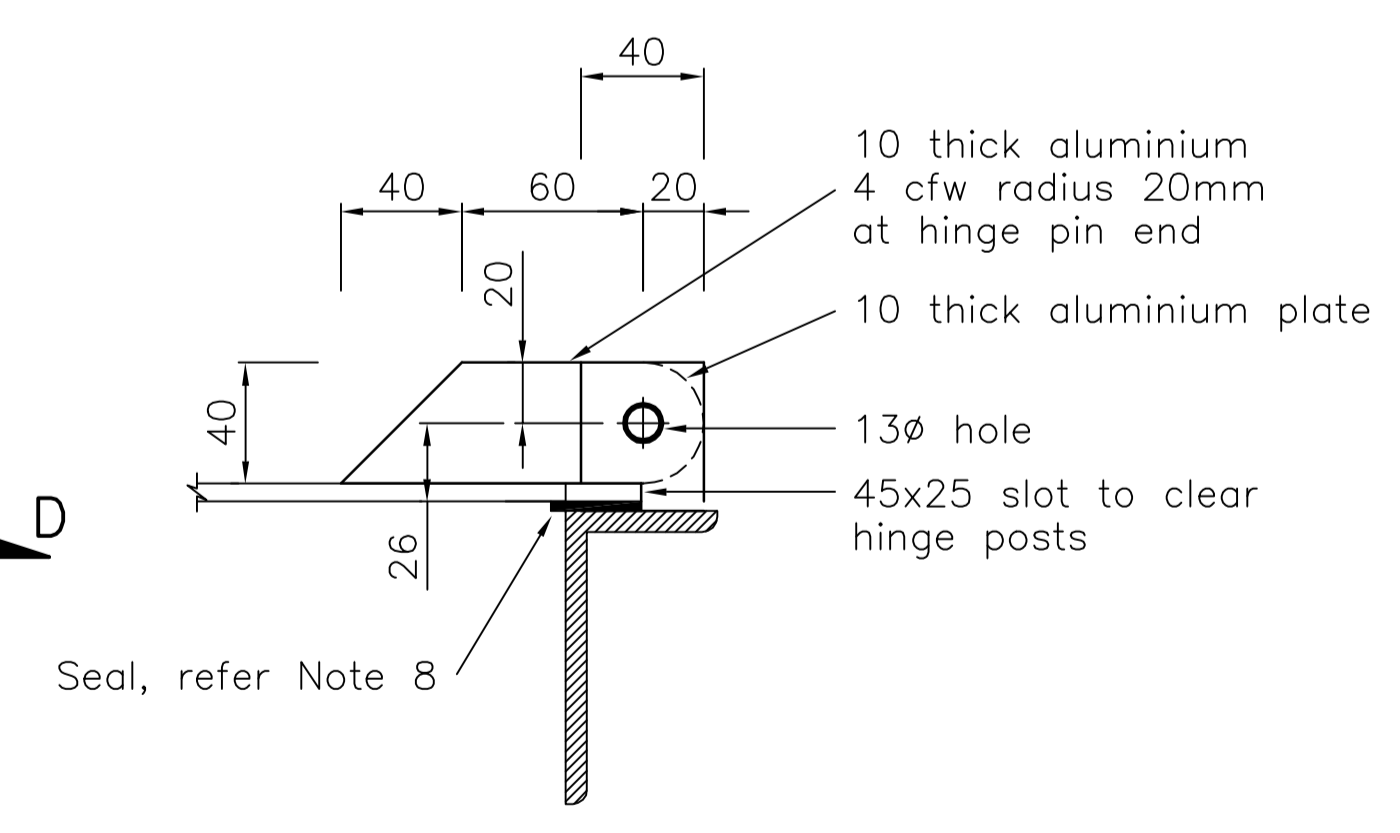
DETAIL 3 - LOCKING DEVICE



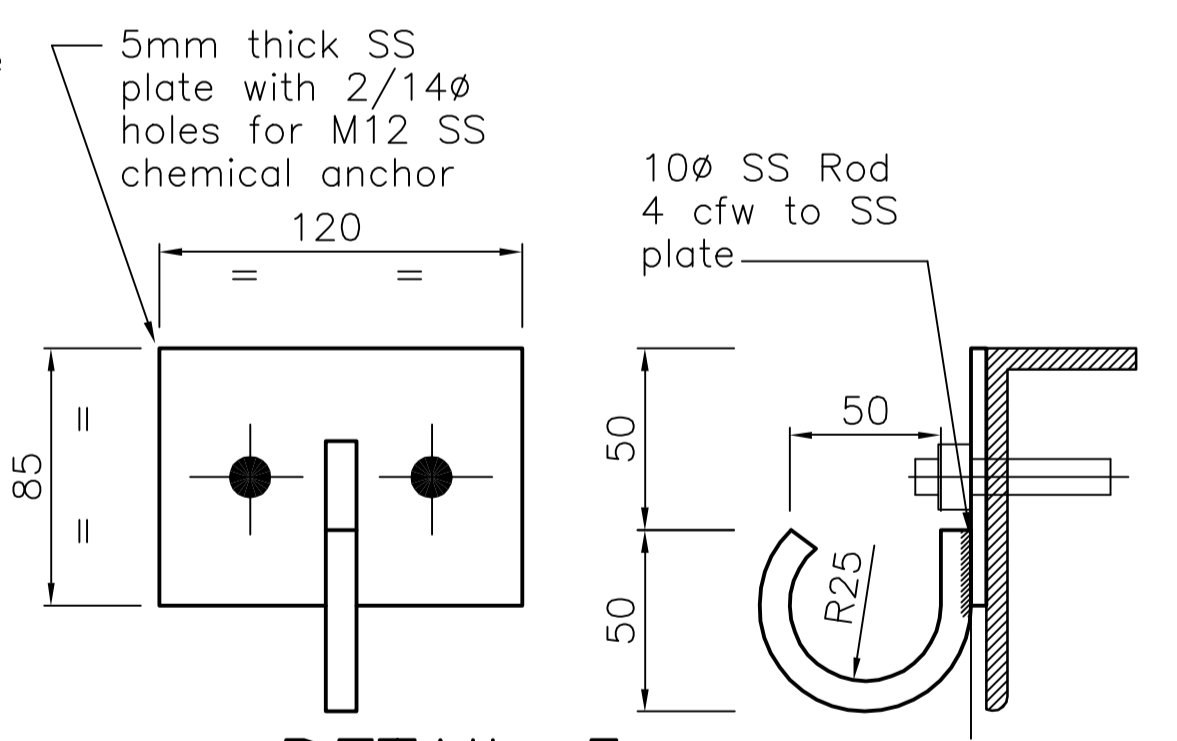
SECTION C-C



DETAIL 4 - HINGES



SECTION D-D



DETAIL 5 - CHAIN/CABLE HOOK 5 OFF

This drawing is copyright and the property of the City of the Council of Thuringowa and must not be reproduced wholly or in part without written permission.

No.	DATE	DESCRIPTION	AP'D
C	27/3/2001	MODIFIED CHAIN/CABLE HOOK AND ADDED NOTE 9	DPM
B	23/3/2000	CHAIN/CABLE HOOKS, 2 ADDED	
A	1/7/99	ORIGINAL ISSUE	
		REVISIONS	

NOTES : Not to Scale
Dimensions in millimetres unless noted otherwise
Supersedes 10046B

DISCLAIMER. The City of the Council of Thuringowa shall have no liability or responsibility to the user or any other person or entity with respect to any liability, loss or damage caused or alleged to be caused, directly or indirectly, by the adoption and use of these Standard Drawings. Persons must not rely on these Standard Drawings as the equivalent of, or a substitute for, project-specific design and assessment by an appropriately qualified professional.

CITY OF THURINGOWA
86 Thuringowa Drive, Thuringowa Central, QLD. 4817
Phone: 07 4773 8411 Fax: 07 4773 8600

**SMALL SEWERAGE PUMP STATIONS
TWO PART ACCESS COVER AND FRAME**

DRAWN: NRN
Engineer Approved: Original Signed by D.Moseley Date: 15/7/2005

CHECKED: WJP
D.E.S. Approved: Original Signed by C.Phillips Date: 5/9/2005

STANDARD DRAWING SEWERAGE			
10440			
A	B	C	