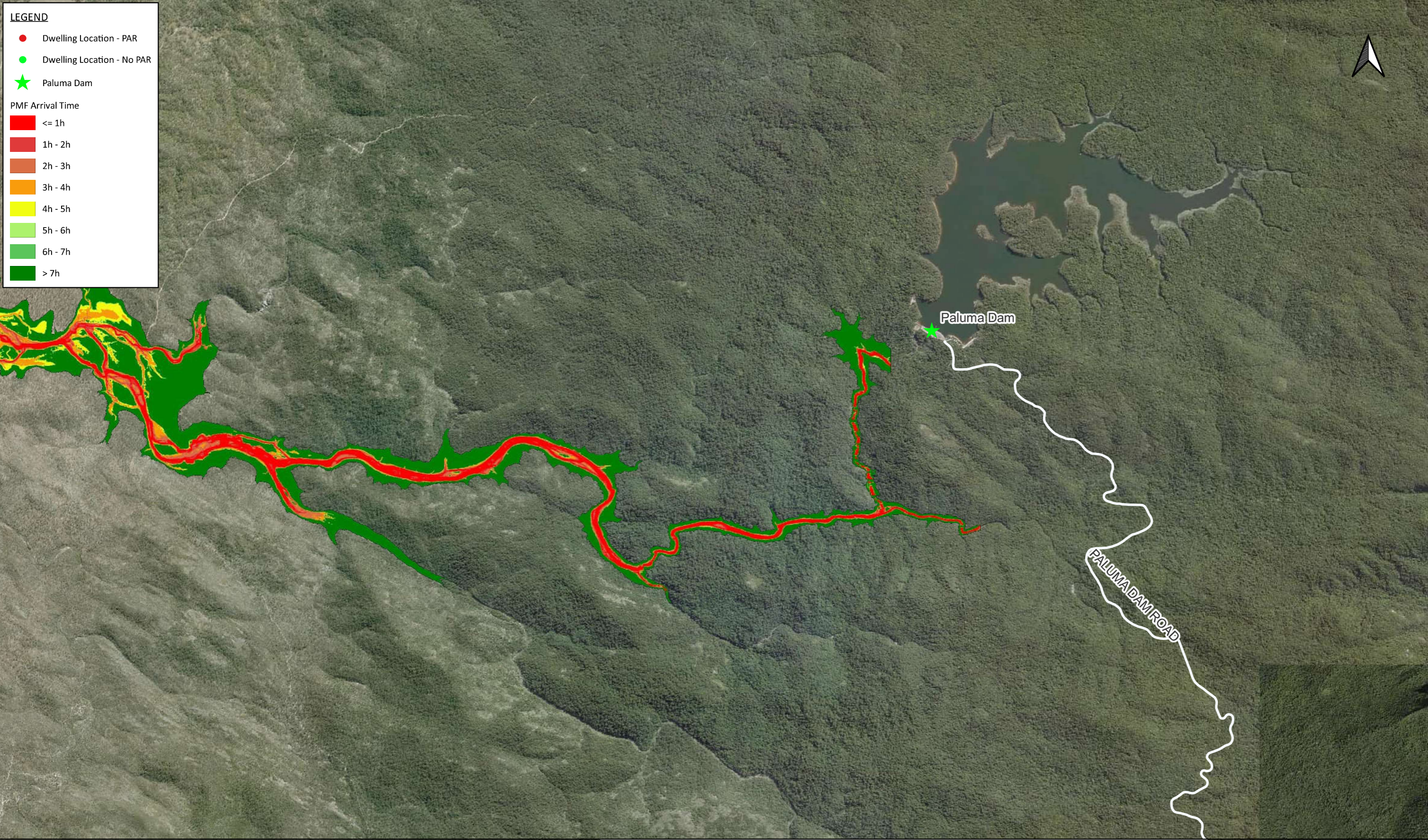



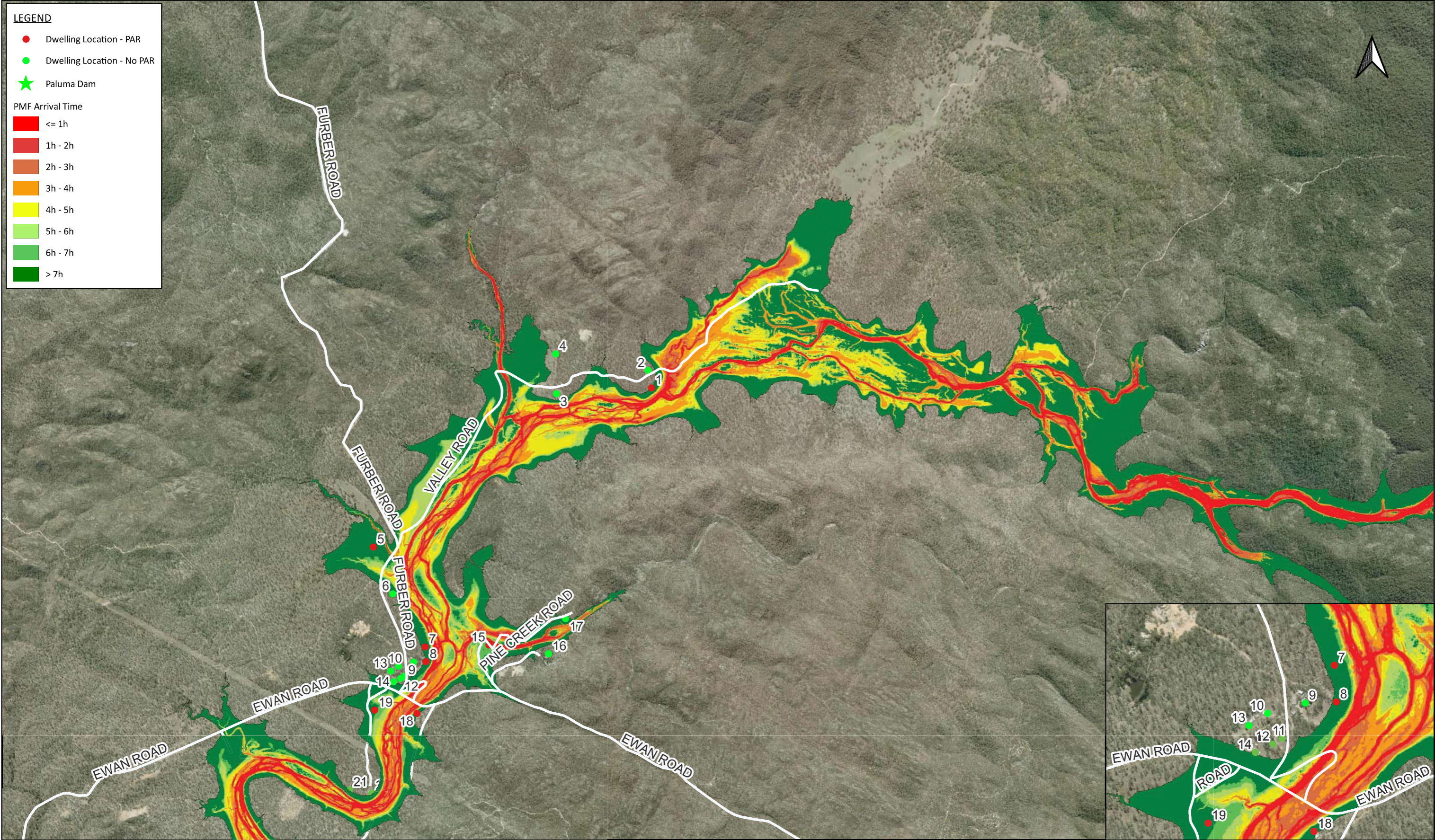


Appendix C – Probable Maximum Flood Arrival Times Mapping



<p>PROJECT TITLE: Paluma Dam FIA</p> <p>PROJECT NO: 30035710</p> <p>MAP TITLE: PMF Arrival Time</p> <p>MAP NO: 1</p> <p>COORDINATE SYSTEM: GDA 94 / MGA ZONE 55</p>		<p>REVISION: 01</p> <p>STATUS: FINAL</p> <p>PAGE SIZE: A3</p> <p>AUTHOR: L.Meteyard</p> <p>SOURCES: QGlobe</p> <p>DATE: 11/09/23</p>		<p>CLIENT:</p> <p></p>		<p>CONSULTANT:</p> <p></p>	
<p>0 300 600 900 1,200 1,500 m</p> <p></p>		<p>© SMEC Australia Pty Ltd 2022. All Rights Reserved</p> <p>Disclaimer: While all reasonable care has been taken to ensure the information contained on this map is up to date and accurate, this map contains data from a number of sources - no warranty is given that the information contained on this is free from error or omission. Any reliance placed on such information shall be at the sole risk of the user. Please verify the accuracy of all information prior to using it. This map is not a design document.</p>					



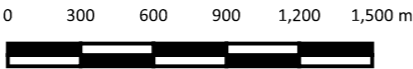
PROJECT TITLE: Paluma Dam FIA

PROJECT NO: 30035710

MAP TITLE: PMF Arrival Time

MAP NO: 2

COORDINATE SYSTEM: GDA 94 / MGA ZONE 55



REVISION: 01

STATUS: FINAL

PAGE SIZE: A3

AUTHOR: L.Meteyard

SOURCES: QGlobe

DATE: 11/09/23

© SMEC Australia Pty Ltd 2022. All Rights Reserved

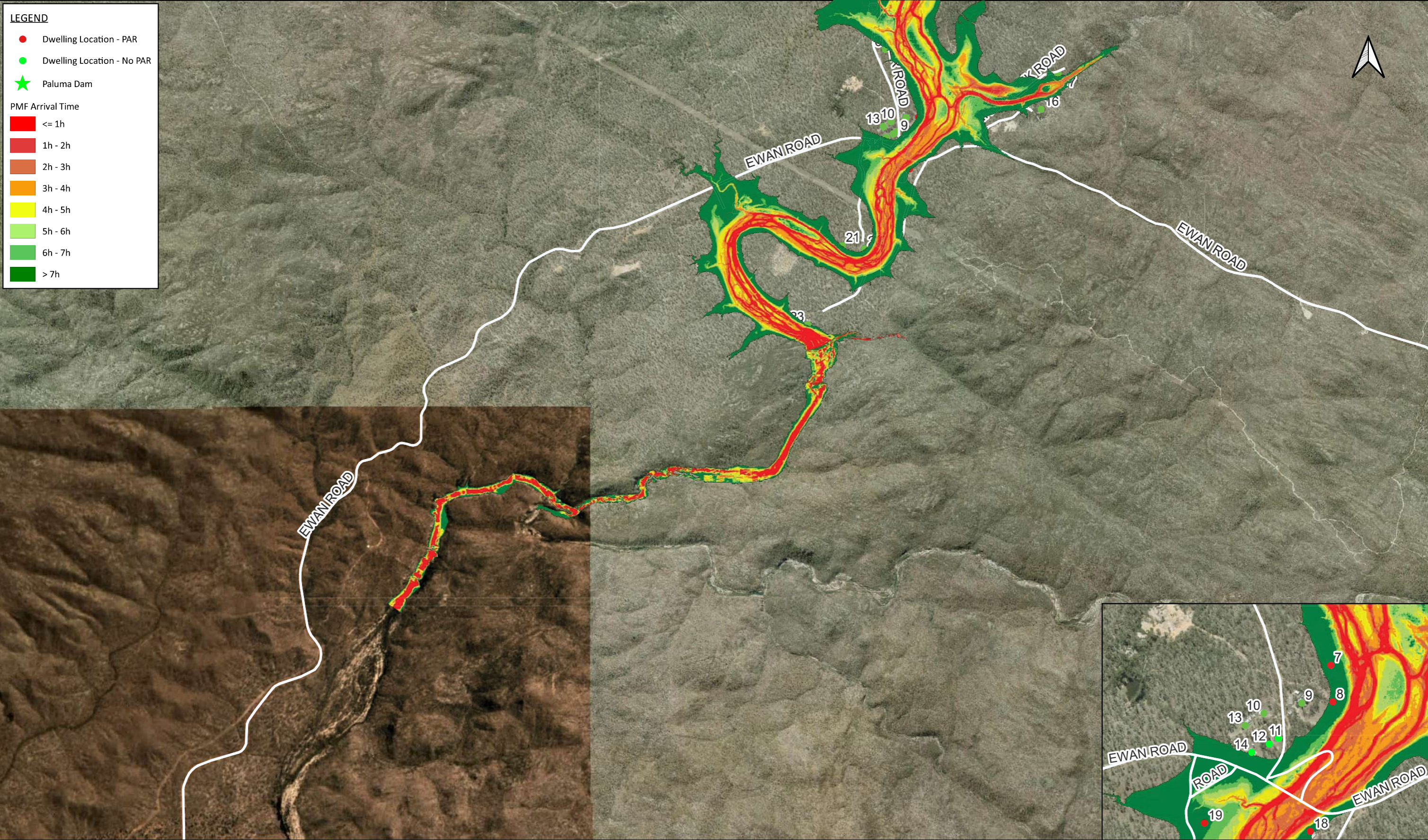
Disclaimer: While all reasonable care has been taken to ensure the information contained on this map is up to date and accurate, this map contains data from a number of sources - no warranty is given that the information contained on this is free from error or omission. Any reliance placed on such information shall be at the sole risk of the user. Please verify the accuracy of all information prior to using it. This map is not a design document.




CLIENT:



CONSULTANT:





<div>PROJECT TITLE: Paluma Dam FIA</div> <div>PROJECT NO: 30035710</div> <div>MAP TITLE: PMF Arrival Time</div> <div>MAP NO: 3</div> <div>COORDINATE SYSTEM: GDA 94 / MGA ZONE 55</div>		<div>03006009001,2001,500 m</div> <div></div>	<div>REVISION: 01</div> <div>STATUS: FINAL</div> <div>PAGE SIZE: A3</div> <div>AUTHOR: L.Meteyard</div> <div>SOURCES: QGlobe</div> <div>DATE: 11/09/23</div>	<div>© SMEC Australia Pty Ltd 2022. All Rights Reserved</div> <div>Disclaimer: While all reasonable care has been taken to ensure the information contained on this map is up to date and accurate, this map contains data from a number of sources - no warranty is given that the information contained on this is free from error or omission. Any reliance placed on such information shall be at the sole risk of the user. Please verify the accuracy of all information prior to using it. This map is not a design document.</div>	<div>CLIENT:</div> <div></div>	<div>CONSULTANT:</div> <div><div>Member of the Surbana Jurong Group</div></div>
---	--	---	--	--	---	--