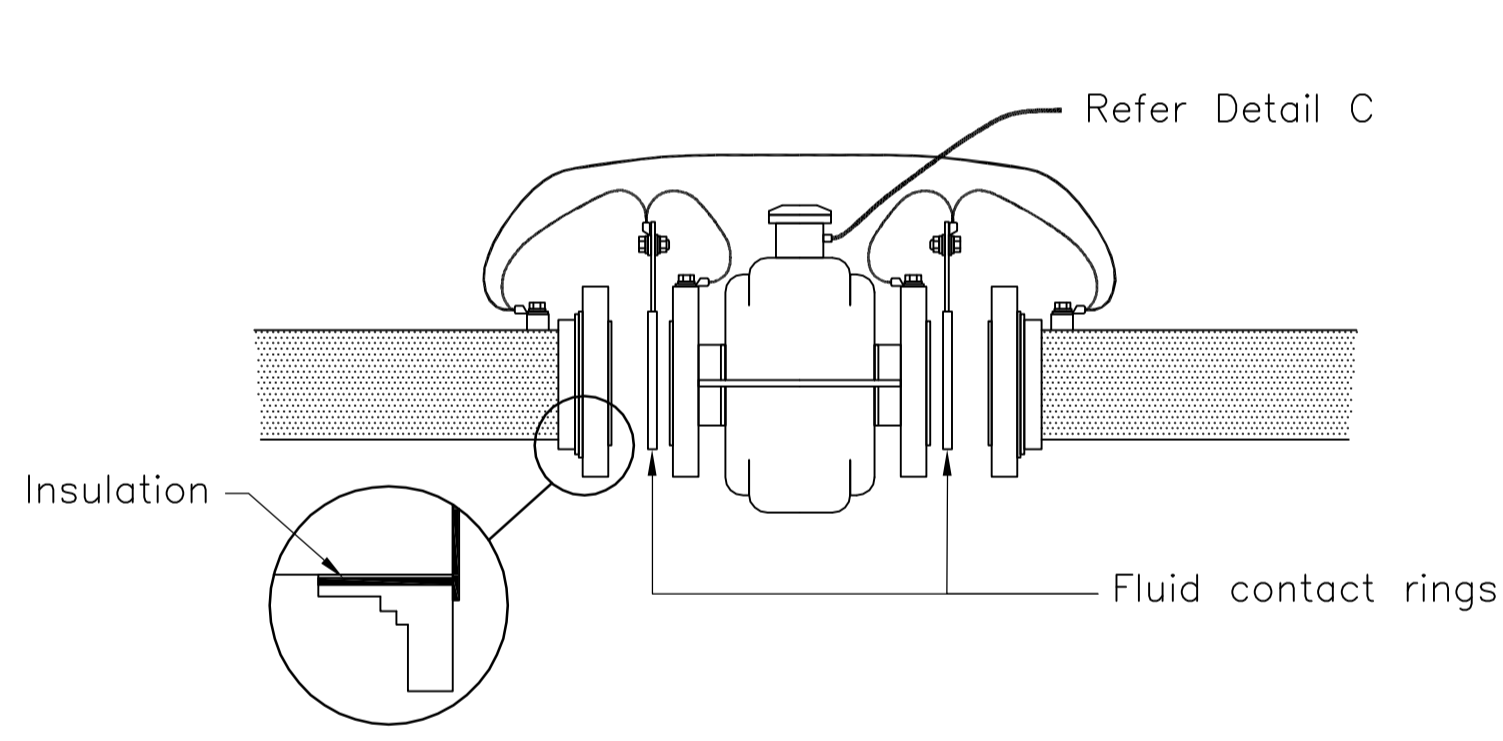


- NOTES**
1. Diameter of flow meter and pipework to suit required capacity of the installation.
 2. Flow meter installation may be set parallel to or perpendicular to front boundary to suit consumer's requirements.
 3. Non-return valve to be in approved pit with safety lid if installed underground.
 4. Pipe to be installed by boring under existing roads. Refer Drawing 10305.
 5. The flow cut off calibration setting for the Magnetic Flow Meters to be confirmed by Council prior to installation.

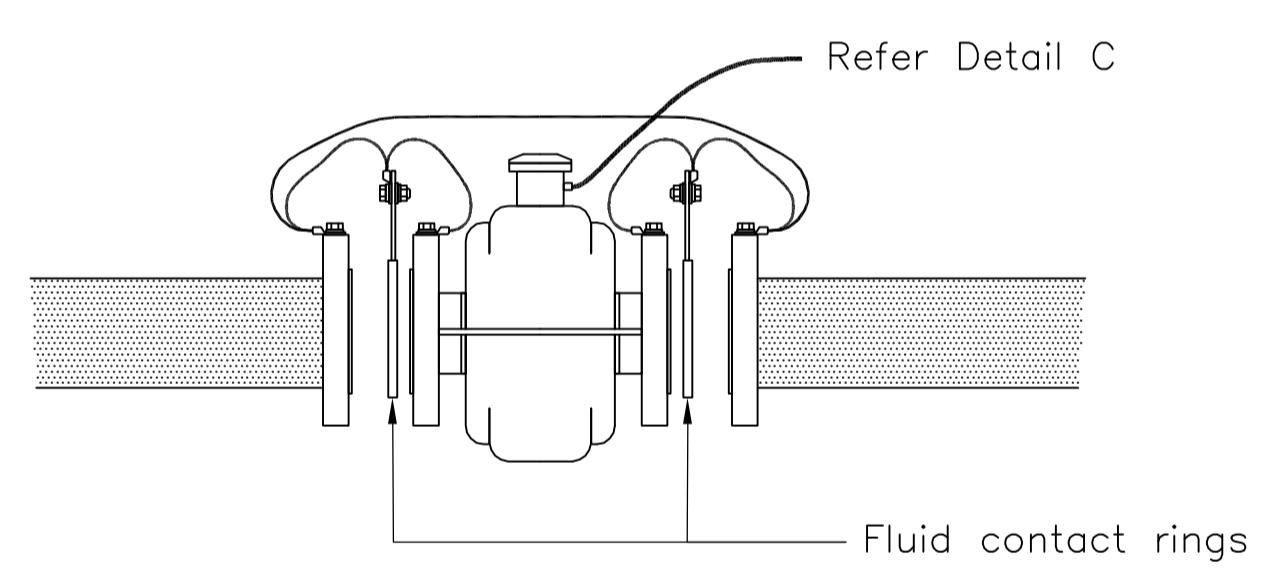
TYPICAL ELEVATION (WATER MAIN ON OPPOSITE SIDE OF ROAD)



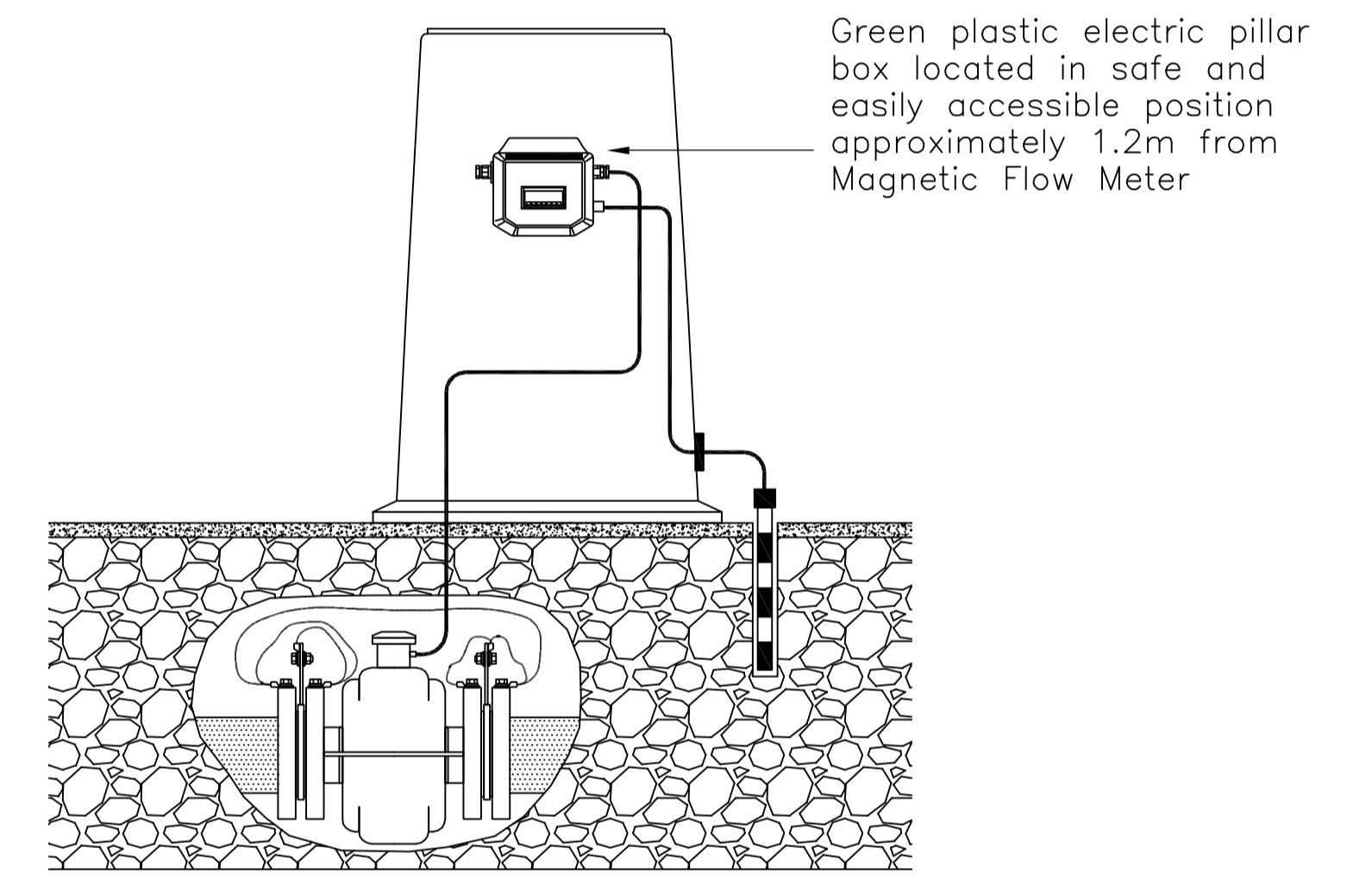
**METAL PIPE WITH FLANGE ADAPTOR
DETAIL A**

KEY TO DETAILS A – F
 Metal Pipes [hatched pattern]
 Plastic Pipes [dotted pattern]

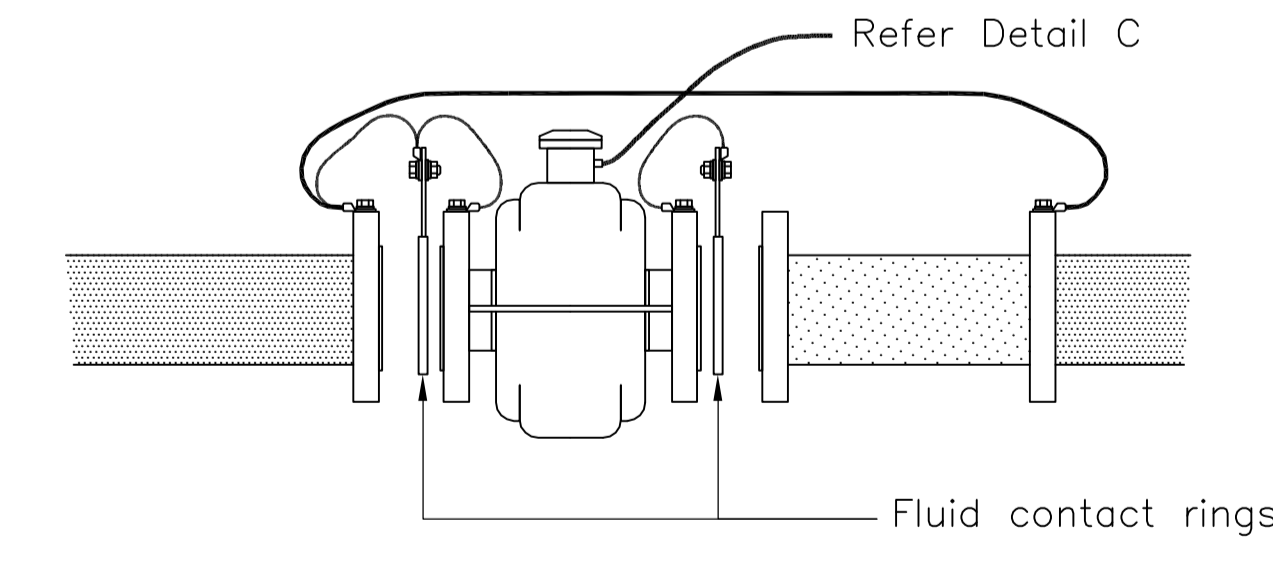
For more information on Details A-F refer to the Installation Manual for Electronic Commercial Water Meter – AquaMaster



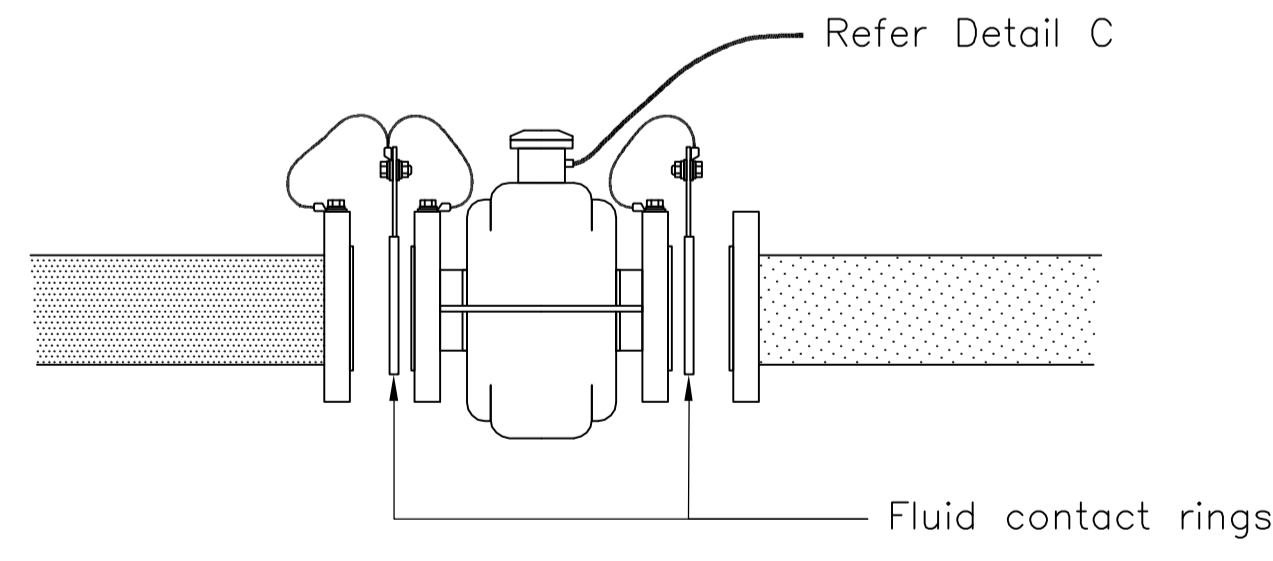
**ALL METAL PIPE, INCLUDING LINED METAL PIPE
DETAIL B**



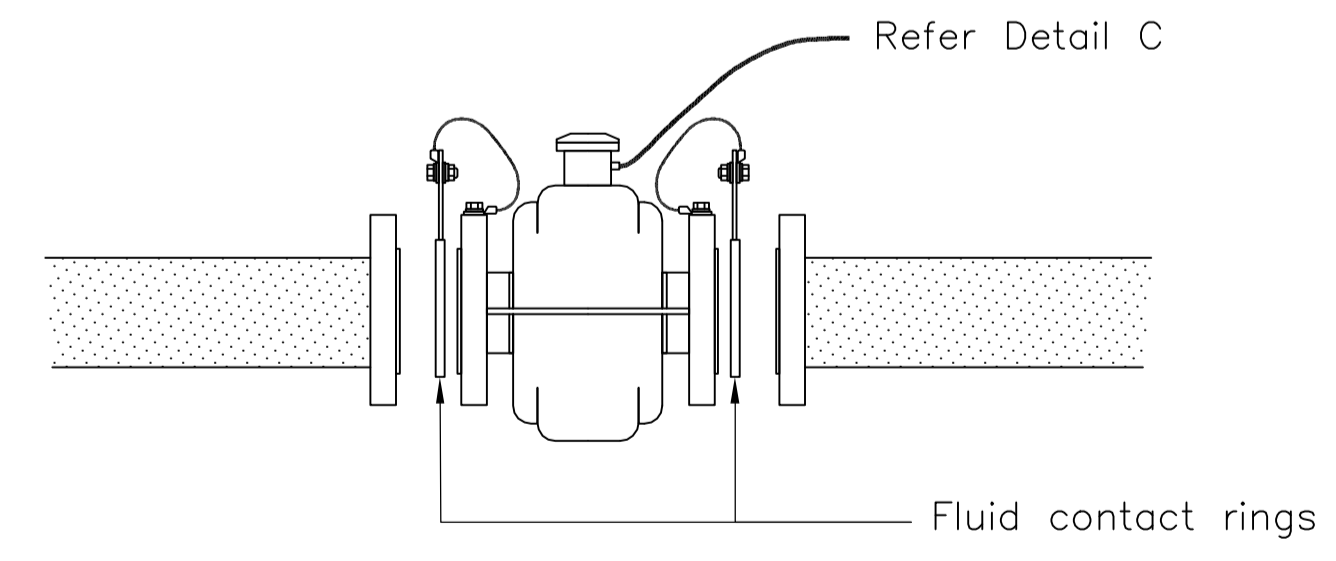
**MAINS OR BATTERY POWERED TRANSMITTER IN
ROADSIDE CABINET WITH LOCAL GROUND
DETAIL C**



**METAL PIPE WITH PLASTIC MAKE-UP INSERT
DETAIL D**



**FLANGED METAL PIPE TO PLASTIC PIPE
DETAIL E**



**ALL PLASTIC PIPE
DETAIL F**

A		17/11/2004	ORIGINAL ISSUE	
No.	DATE	DESCRIPTION		AP'D
REVISIONS				

NOTES : Not to Scale

THE CITY OF THURINGOWA

86 Thuringowa Drive
 Thuringowa Central, QLD, 4817
 Phone : (07) 4773 8411
 Fax : (07) 4773 8571
 Email : council@thuringowa.qld.gov.au
 Web : www.thuringowa.qld.gov.au

DRAWN: NRM	Engineer Approved: C.Phillips	Date: 28/2/2005
CHECKED: T Healey	Director Approved: B.Bailey	Date: 5/4/2005

**BATTERY MAGNETIC FLOW METER
INSTALLATION**

**STANDARD
DRAWING
WATER**

10356

A