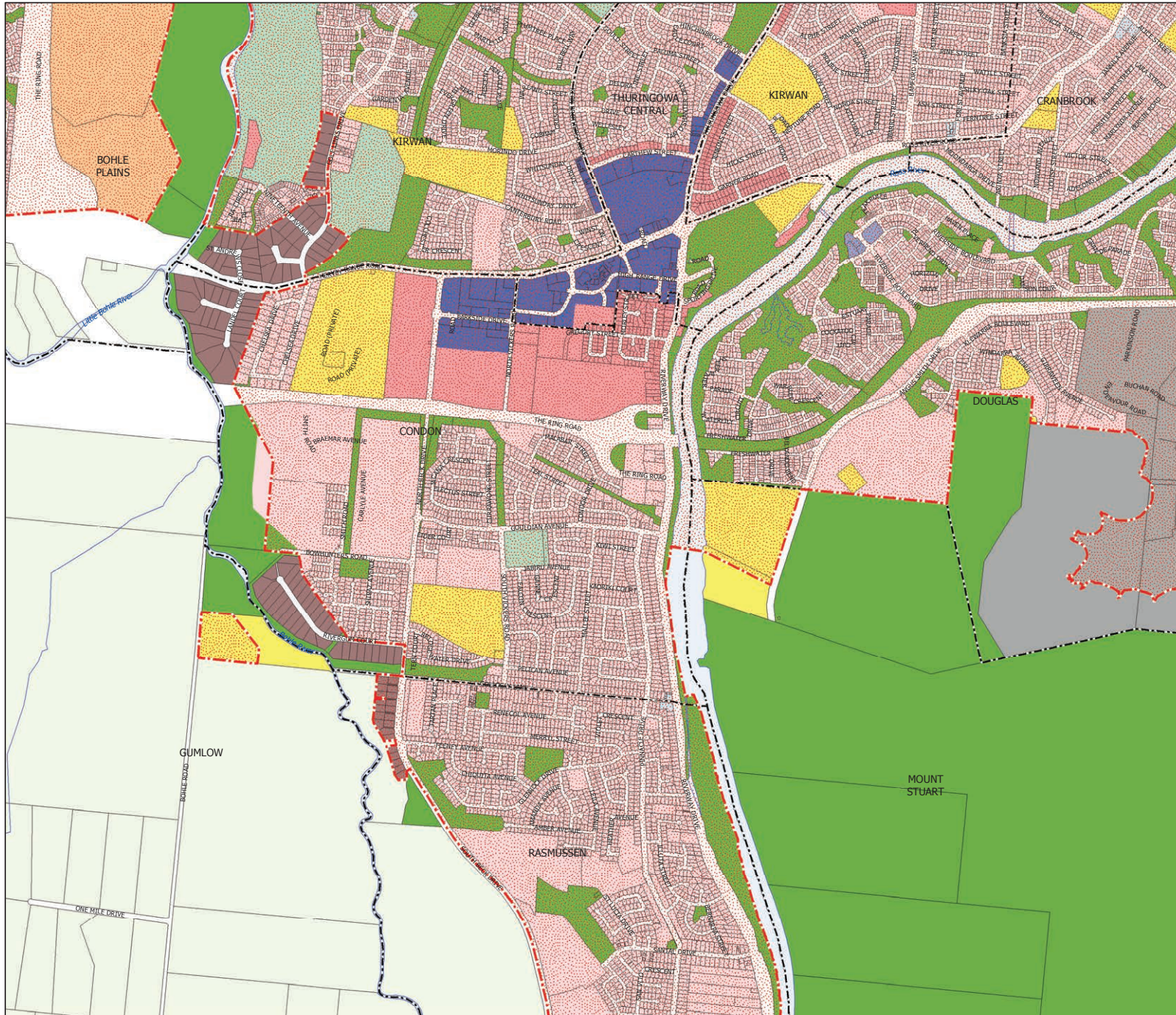




Townsville City Council Priority Infrastructure Area Map



Priority infrastructure

Priority Infrastructure Area

Residential zones category

- Low density residential
- Medium density residential
- High density residential
- Rural residential
- Character residential

Centre zones category

- Neighbourhood centre
- Local centre
- District centre
- Major centre
- Principal centre (CBD)
- Specialised centre
- Mixed use

Community facilities and open space zones category

- Sport and recreation
- Open space
- Community facilities
- Environmental management and conservation

Industry zones category

- Low impact industry
- Medium impact industry
- High impact industry

Rural zones category

- Rural

Other zones category

- Emerging community
- Special purpose

Cadastre

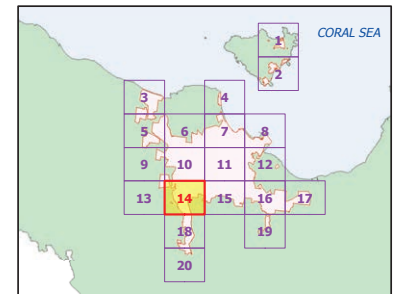
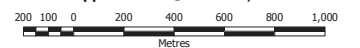
- Local government boundary
- Suburb
- DCDB TCC
- Waterway or waterbody

While every care is taken to ensure the accuracy of this product, Townsville City Council makes no representations or warranties about the accuracy, reliability, completeness or suitability for any particular purpose and disclaims all responsibility and all liability (including without limitation, liability in negligence) for all expenses, losses, damages (including indirect or consequential damage) and costs you may incur as a result of the product being inaccurate or incomplete in any way or for any reason.

© Copyright Townsville City Council, October 2014
Gazetted Date: 17/10/2014
QPP Version: 3.1
Geocentric Datum of Australia 1994 (GDA94)



Approx Scale @ A3 1:20,000



Priority Infrastructure Area Map 014