

# APPENDIX G

Matters of Interest Report

brazier motti



## **Matters of Interest for all selected Lot Plans**

*Coastal area - erosion prone area*

*Coastal area - medium storm tide inundation area*

*Coastal area - high storm tide inundation area*

*Queensland waterways for waterway barrier works*

*State-controlled road*

*Area within 25m of a State-controlled road*

*Future State-controlled road*

## **Matters of Interest by Lot Plan**

### **Lot Plan: 1SP343205 (Area: 195800 m<sup>2</sup>)**

*Coastal area - erosion prone area*

*Coastal area - medium storm tide inundation area*

*Coastal area - high storm tide inundation area*

*Queensland waterways for waterway barrier works*

*State-controlled road*

*Area within 25m of a State-controlled road*


*Future State-controlled road*

146.805° 146.8055° 146.8061° 146.8066° 146.8072° 146.8077° 146.8083° 146.8088° 146.8094° 146.8099° 146.8105° 146.8111° 146.8116°

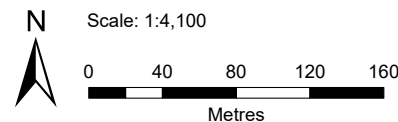
-19.3123°  
-19.3128°  
-19.3134°  
-19.3139°  
-19.3145°  
-19.315°  
-19.3156°  
-19.3162°  
-19.3167°  
-19.3173°  
-19.3178°  
-19.3184°  
-19.3189°  
-19.3195°

-19.3123°  
-19.3128°  
-19.3134°  
-19.3139°  
-19.3145°  
-19.315°  
-19.3156°  
-19.3162°  
-19.3167°  
-19.3173°  
-19.3178°  
-19.3184°  
-19.3189°  
-19.3195°



 Coastal area - erosion prone area

Date: 28/11/2024



Queensland  
Government



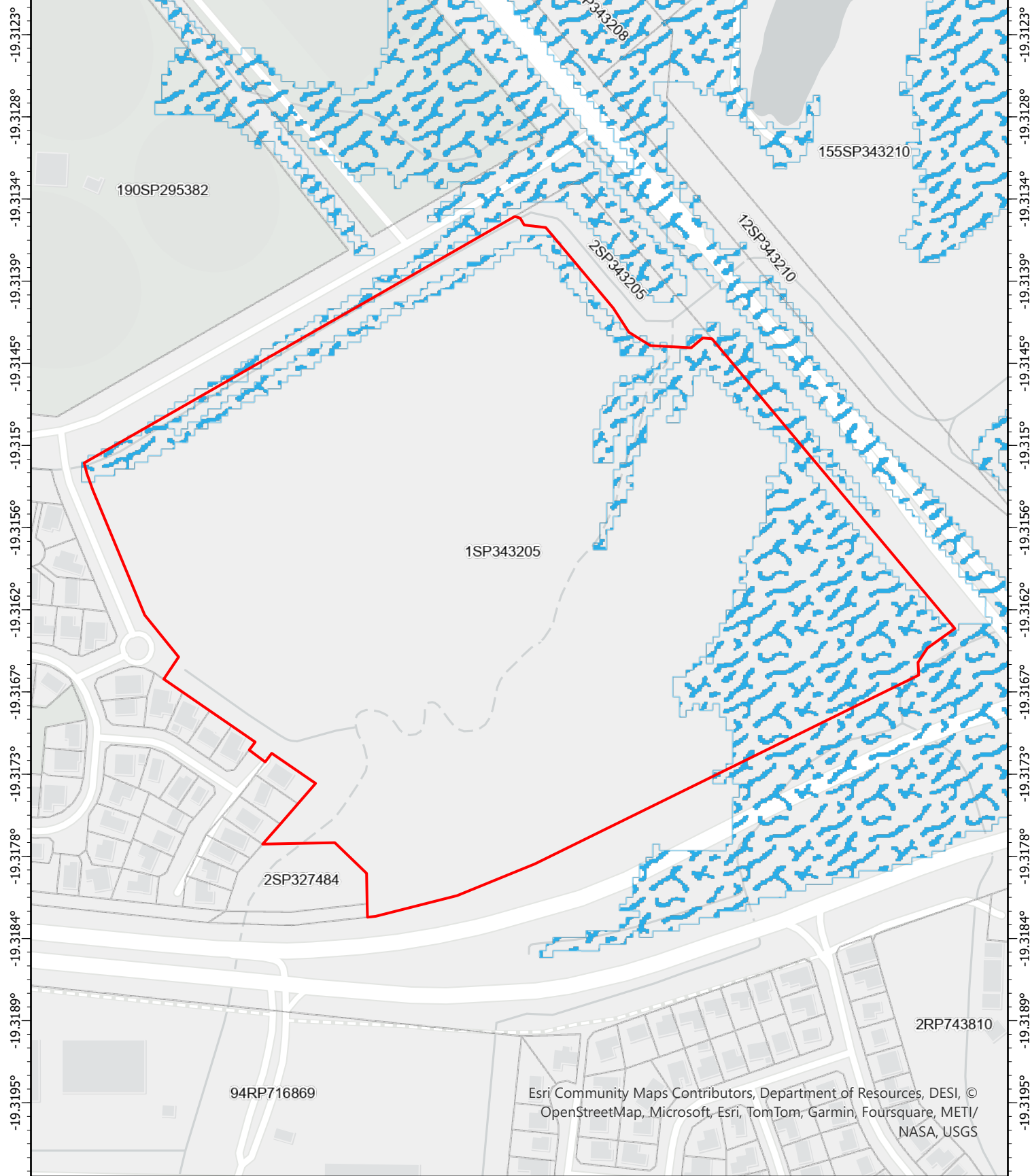
**Disclaimer** This map has been generated from the information supplied to the Queensland Government for the purposes of the Development Assessment Mapping System. The map generated has been prepared with due care based on the best available information at the time of publication. The State of Queensland holds no responsibility for any errors, inconsistencies or omissions within this document. Any decisions made by other parties based on this document are solely the responsibility of those parties.


Document Set ID: 26612797

© The State of Queensland 2024.

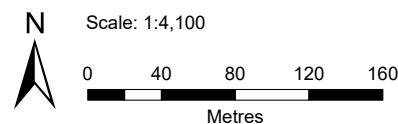
Version: 1, Version Date: 16/12/2024

146.805° 146.8055° 146.8061° 146.8066° 146.8072° 146.8077° 146.8083° 146.8088° 146.8094° 146.8099° 146.8105° 146.8111° 146.8116°



 Coastal area - medium storm tide inundation area

Date: 28/11/2024



Queensland  
Government



**Disclaimer** This map has been generated from the information supplied to the Queensland Government for the purposes of the Development Assessment Mapping System. The map generated has been prepared with due care based on the best available information at the time of publication. The State of Queensland holds no responsibility for any errors, inconsistencies or omissions within this document. Any decisions made by other parties based on this document are solely the responsibility of those parties.

Document Set ID: 26612797

© The State of Queensland 2024.


Version: 1, Version Date: 16/12/2024

146.805° 146.8055° 146.8061° 146.8066° 146.8072° 146.8077° 146.8083° 146.8088° 146.8094° 146.8099° 146.8105° 146.8111° 146.8116°

-19.3123°  
-19.3128°  
-19.3134°  
-19.3139°  
-19.3145°  
-19.315°  
-19.3156°  
-19.3162°  
-19.3167°  
-19.3173°  
-19.3178°  
-19.3184°  
-19.3189°  
-19.3195°

-19.3123°  
-19.3128°  
-19.3134°  
-19.3139°  
-19.3145°  
-19.315°  
-19.3156°  
-19.3162°  
-19.3167°  
-19.3173°  
-19.3178°  
-19.3184°  
-19.3189°  
-19.3195°

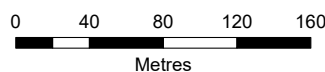


 Coastal area - high storm tide inundation area

Date: 28/11/2024



Scale: 1:4,100



Queensland  
Government



**Disclaimer** This map has been generated from the information supplied to the Queensland Government for the purposes of the Development Assessment Mapping System. The map generated has been prepared with due care based on the best available information at the time of publication. The State of Queensland holds no responsibility for any errors, inconsistencies or omissions within this document. Any decisions made by other parties based on this document are solely the responsibility of those parties.

Document Set ID: 26612797

© The State of Queensland 2024.

Version: 1, Version Date: 16/12/2024



146.805° 146.8055° 146.8061° 146.8066° 146.8072° 146.8077° 146.8083° 146.8088° 146.8094° 146.8099° 146.8105° 146.8111° 146.8116°



## Queensland waterways for waterway barrier works

### Risk of impact

- Low
- Moderate
- High

**Disclaimer** This map has been generated from the information supplied to the Queensland Government for the purposes of the Development Assessment Mapping System. The map generated has been prepared with due care based on the best available information at the time of publication. The State of Queensland holds no responsibility for any errors, inconsistencies or omissions within this document. Any decisions made by other parties based on this document are solely the responsibility of those parties.

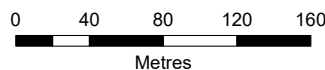
Document Set ID: 26612797

Version: 1, Version Date: 16/12/2024

Date: 28/11/2024



Scale: 1:4,100



Queensland  
Government

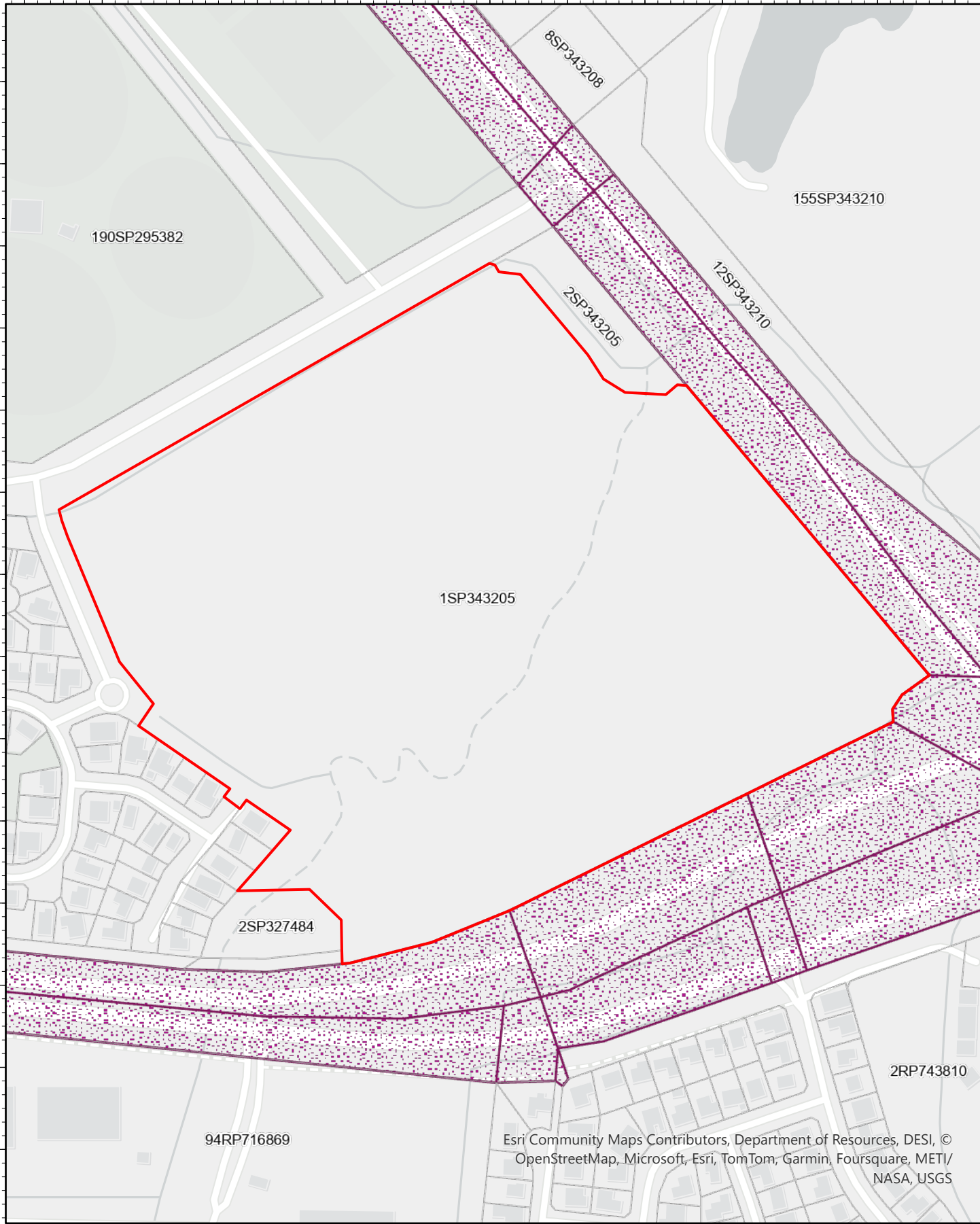


© The State of Queensland 2024.

146.805° 146.8055° 146.8061° 146.8066° 146.8072° 146.8077° 146.8083° 146.8088° 146.8094° 146.8099° 146.8105° 146.8111° 146.8116°

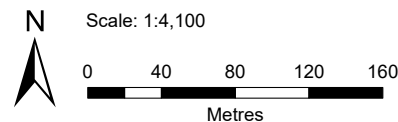
-19.3123°  
-19.3128°  
-19.3134°  
-19.3139°  
-19.3145°  
-19.315°  
-19.3156°  
-19.3162°  
-19.3167°  
-19.3173°  
-19.3178°  
-19.3184°  
-19.3189°  
-19.3195°

-19.3123°  
-19.3128°  
-19.3134°  
-19.3139°  
-19.3145°  
-19.315°  
-19.3156°  
-19.3162°  
-19.3167°  
-19.3173°  
-19.3178°  
-19.3184°  
-19.3189°  
-19.3195°



 State-controlled road

Date: 28/11/2024



Queensland  
Government



**Disclaimer** This map has been generated from the information supplied to the Queensland Government for the purposes of the Development Assessment Mapping System. The map generated has been prepared with due care based on the best available information at the time of publication. The State of Queensland holds no responsibility for any errors, inconsistencies or omissions within this document. Any decisions made by other parties based on this document are solely the responsibility of those parties.

Document Set ID: 26612797

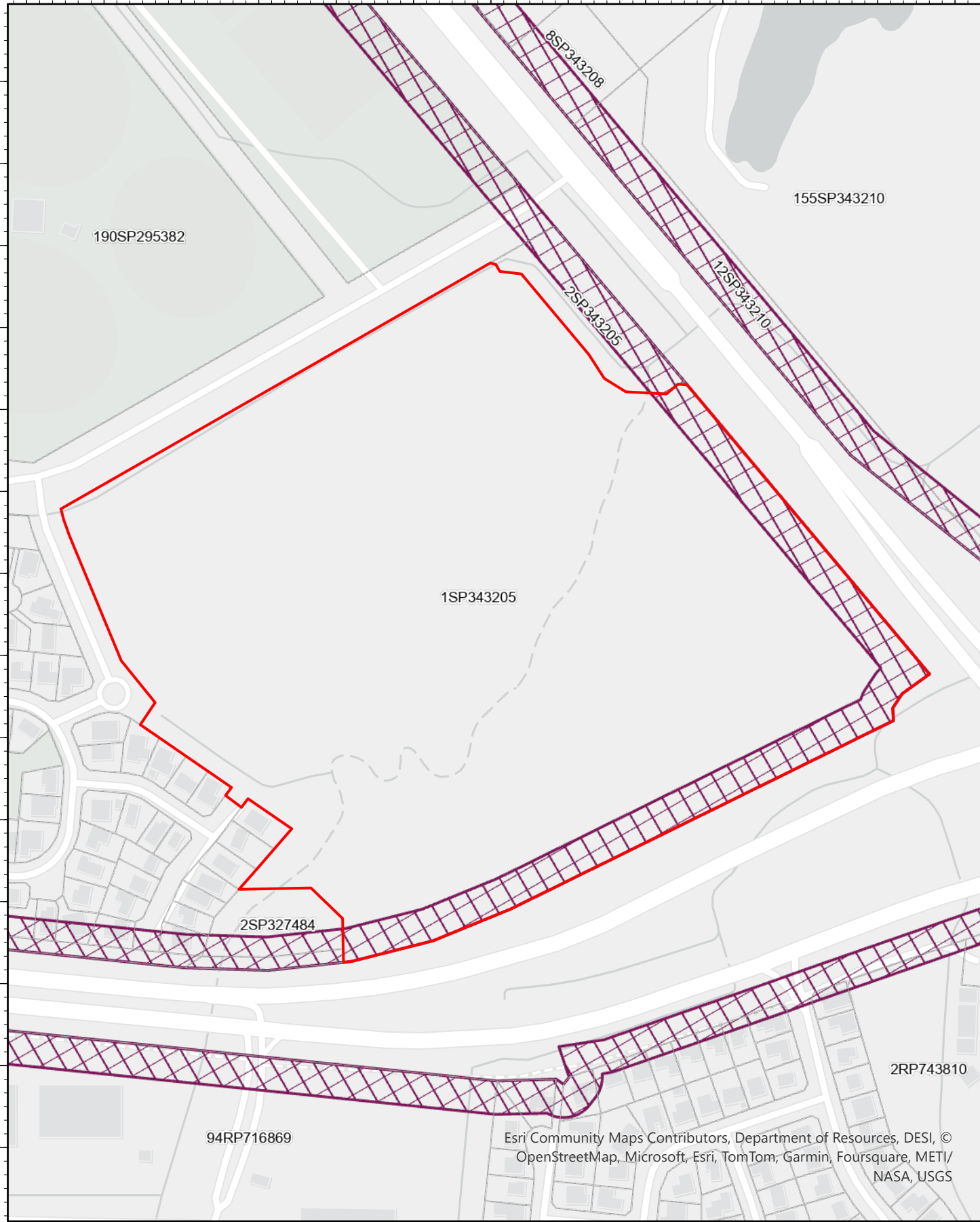
© The State of Queensland 2024.


Version: 1, Version Date: 16/12/2024

146.805° 146.8055° 146.8061° 146.8066° 146.8072° 146.8077° 146.8083° 146.8088° 146.8094° 146.8099° 146.8105° 146.8111° 146.8116°

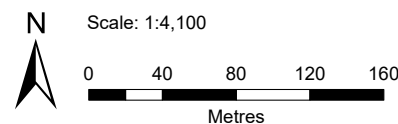
-19.3123°  
-19.3128°  
-19.3134°  
-19.3139°  
-19.3145°  
-19.315°  
-19.3156°  
-19.3162°  
-19.3167°  
-19.3173°  
-19.3178°  
-19.3184°  
-19.3189°  
-19.3195°

-19.3123°  
-19.3128°  
-19.3134°  
-19.3139°  
-19.3145°  
-19.315°  
-19.3156°  
-19.3162°  
-19.3167°  
-19.3173°  
-19.3178°  
-19.3184°  
-19.3189°  
-19.3195°



 Area within 25m of a State-controlled road

Date: 28/11/2024



Queensland  
Government



**Disclaimer** This map has been generated from the information supplied to the Queensland Government for the purposes of the Development Assessment Mapping System. The map generated has been prepared with due care based on the best available information at the time of publication. The State of Queensland holds no responsibility for any errors, inconsistencies or omissions within this document. Any decisions made by other parties based on this document are solely the responsibility of those parties.

Document Set ID: 26612797

© The State of Queensland 2024.

Version: 1, Version Date: 16/12/2024




146.805° 146.8055° 146.8061° 146.8066° 146.8072° 146.8077° 146.8083° 146.8088° 146.8094° 146.8099° 146.8105° 146.8111° 146.8116°

-19.3123°  
-19.3128°  
-19.3134°  
-19.3139°  
-19.3145°  
-19.315°  
-19.3156°  
-19.3162°  
-19.3167°  
-19.3173°  
-19.3178°  
-19.3184°  
-19.3189°  
-19.3195°

-19.3123°  
-19.3128°  
-19.3134°  
-19.3139°  
-19.3145°  
-19.315°  
-19.3156°  
-19.3162°  
-19.3167°  
-19.3173°  
-19.3178°  
-19.3184°  
-19.3189°  
-19.3195°

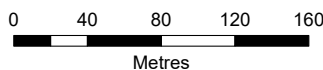


 Future State-controlled road

Date: 28/11/2024



Scale: 1:4,100



Queensland  
Government



**Disclaimer** This map has been generated from the information supplied to the Queensland Government for the purposes of the Development Assessment Mapping System. The map generated has been prepared with due care based on the best available information at the time of publication. The State of Queensland holds no responsibility for any errors, inconsistencies or omissions within this document. Any decisions made by other parties based on this document are solely the responsibility of those parties.

Document Set ID: 26612797

Version: 1, Version Date: 16/12/2024

© The State of Queensland 2024.