



**ROSS CREEK
FLOOD STUDY
100 YEAR ARI**

Aitkenvale/Mundingburra

FIGURE D24.2

Legend

Flow Velocity (m/s)

- < 0.25
- 0.25 - 0.5
- 0.5 - 0.75
- 0.75 - 1
- 1 - 1.25
- 1.25 - 1.5
- 1.5 - 1.75
- 1.75 - 2
- 2 - 3
- > 3



SCALE: 1:10,000 @A3

100 50 0 100 200 300 Meters

DISCLAIMER
The information shown on this map has been produced from the Townsville City Council's digital database. There is no warranty implied or expressed regarding the accuracy or completeness of the data. The data has been compiled for information and convenience only, and it is the responsibility of the user to verify all information before placing reliance on it. For accurate service locations please contact the Customer Services Centre on 1300 878 001.
This is not a legal document and is published for information and convenience only. The Townsville City Council takes no responsibility for any errors or omissions herein or for any acts that may occur due to its use.

Produced by:
INFRASTRUCTURE PLANNING
Strategic Planning
DATE: 04/03/2012
DATE PRINTED: 4/03/2013
DRAWN BY: WBB
DIGITAL FILE: RossCreek_FigD24.mxd
© Townsville City Council 2013



**ROSS CREEK
FLOOD STUDY
100 YEAR ARI**

Rosslea/Mysterton/Hermit Park

FIGURE D24.3

Legend

Flow Velocity (m/s)

- < 0.25
- 0.25 - 0.5
- 0.5 - 0.75
- 0.75 - 1
- 1 - 1.25
- 1.25 - 1.5
- 1.5 - 1.75
- 1.75 - 2
- 2 - 3
- > 3



SCALE: 1:10,000 @A3

100 50 0 100 200 300 Meters

DISCLAIMER
The information shown on this map has been produced from the Townsville City Council's digital database. There is no warranty implied or expressed regarding the accuracy or completeness of the data. The data has been compiled for information and convenience only, and it is the responsibility of the user to verify all information before placing reliance on it. For accurate service locations please contact the Customer Services Centre on 1300 878 001.
This is not a legal document and is published for information and convenience only. The Townsville City Council takes no responsibility for any errors or omissions herein or for any acts that may occur due to its use.

Produced by:
INFRASTRUCTURE PLANNING
Strategic Planning
DATE: 04/03/2012
DATE PRINTED: 4/03/2013
DRAWN BY: WBB
DIGITAL FILE: RossCreek_FigD24.mxd
© Townsville City Council 2013



**ROSS CREEK
FLOOD STUDY
100 YEAR ARI**

Railway Estate/South Townsville

FIGURE D24.4

Legend

Flow Velocity (m/s)

- < 0.25
- 0.25 - 0.5
- 0.5 - 0.75
- 0.75 - 1
- 1 - 1.25
- 1.25 - 1.5
- 1.5 - 1.75
- 1.75 - 2
- 2 - 3
- > 3

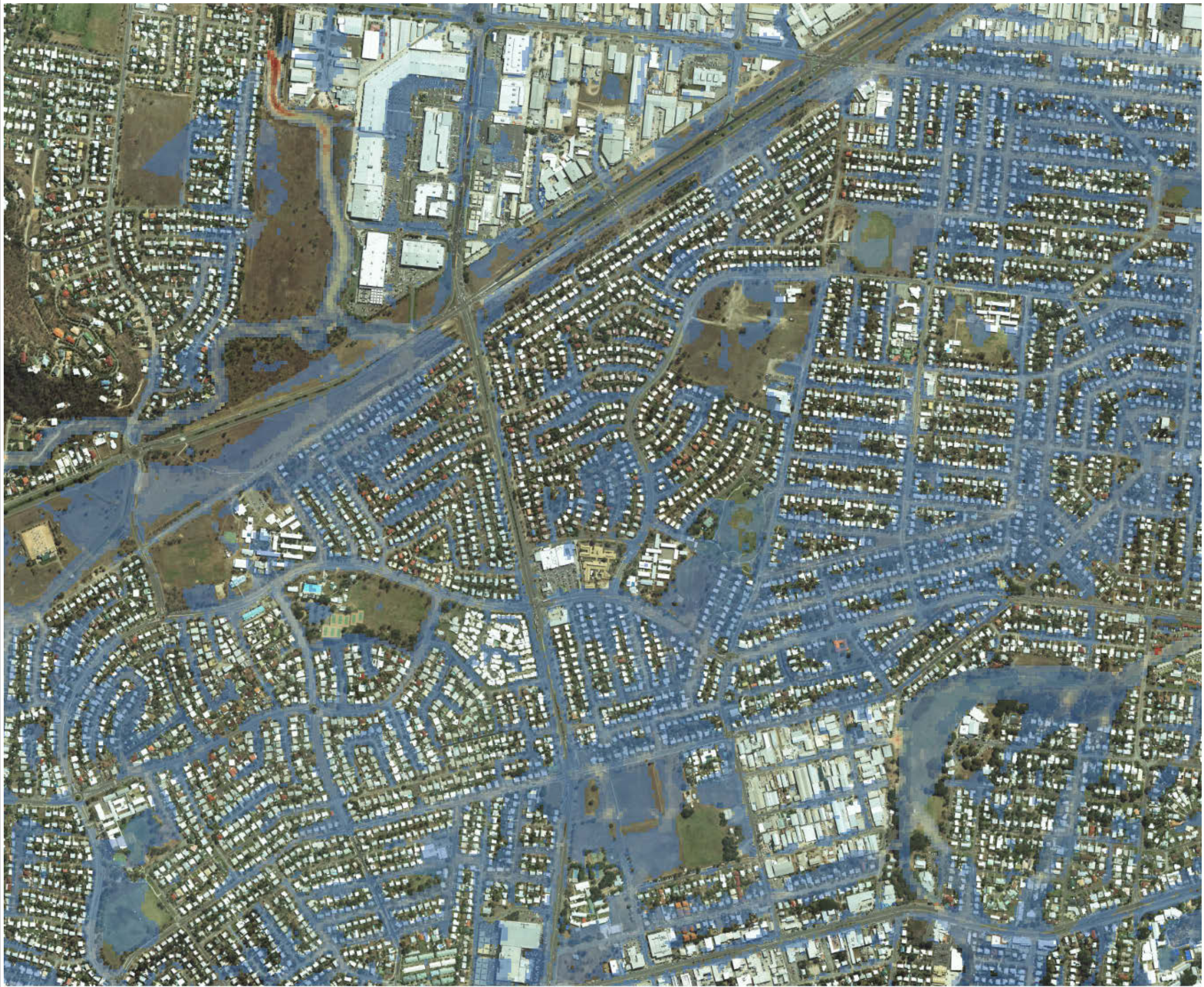


SCALE: 1:10,000 @A3

100 50 0 100 200 300 Meters

DISCLAIMER
The information shown on this map has been produced from the Townsville City Council's digital database. There is no warranty implied or expressed regarding the accuracy or completeness of the data. The data has been compiled for information and convenience only, and it is the responsibility of the user to verify all information before placing reliance on it. For accurate service locations please contact the Customer Services Centre on 1300 878 001.
This is not a legal document and is published for information and convenience only. The Townsville City Council takes no responsibility for any errors or omissions herein or for any acts that may occur due to its use.

Produced by:
INFRASTRUCTURE PLANNING
Strategic Planning
DATE: 04/03/2012
DATE PRINTED: 4/03/2013
DRAWN BY: WBB
DIGITAL FILE: RossCreek_FigD24.mxd
© Townsville City Council 2013



**ROSS CREEK
FLOOD STUDY
100 YEAR ARI**

Heatley/Vincent

FIGURE D24.5

Legend

Flow Velocity (m/s)

- < 0.25
- 0.25 - 0.5
- 0.5 - 0.75
- 0.75 - 1
- 1 - 1.25
- 1.25 - 1.5
- 1.5 - 1.75
- 1.75 - 2
- 2 - 3
- > 3



SCALE: 1:10,000 @A3

100 50 0 100 200 300 Meters

DISCLAIMER
The information shown on this map has been produced from the Townsville City Council's digital database. There is no warranty implied or expressed regarding the accuracy or completeness of the data. The data has been compiled for information and convenience only, and it is the responsibility of the user to verify all information before placing reliance on it. For accurate service locations please contact the Customer Services Centre on 1300 878 001.
This is not a legal document and is published for information and convenience only. The Townsville City Council takes no responsibility for any errors or omissions herein or for any acts that may occur due to its use.

Produced by:
INFRASTRUCTURE PLANNING
Strategic Planning
DATE: 04/03/2012
DATE PRINTED: 4/03/2013
DRAWN BY: WBB
DIGITAL FILE: RossCreek_FigD24.mxd
© Townsville City Council 2013



**ROSS CREEK
FLOOD STUDY
100 YEAR ARI**

Gulliver/Currajong/Pimlico

FIGURE D24.6

Legend

Flow Velocity (m/s)

- < 0.25
- 0.25 - 0.5
- 0.5 - 0.75
- 0.75 - 1
- 1 - 1.25
- 1.25 - 1.5
- 1.5 - 1.75
- 1.75 - 2
- 2 - 3
- > 3



SCALE: 1:10,000 @A3

100 50 0 100 200 300 Meters

DISCLAIMER
The information shown on this map has been produced from the Townsville City Council's digital database. There is no warranty implied or expressed regarding the accuracy or completeness of the data. The data has been compiled for information and convenience only, and it is the responsibility of the user to verify all information before placing reliance on it. For accurate service locations please contact the Customer Services Centre on 1300 878 001.
This is not a legal document and is published for information and convenience only. The Townsville City Council takes no responsibility for any errors or omissions herein or for any acts that may occur due to its use.

Produced by:
INFRASTRUCTURE PLANNING
Strategic Planning
DATE: 04/03/2012
DATE PRINTED: 4/03/2013
DRAWN BY: WBB
DIGITAL FILE: RossCreek_FigD24.mxd
© Townsville City Council 2013



**ROSS CREEK
FLOOD STUDY
100 YEAR ARI**

West End/Hyde Park

FIGURE D24.7

Legend

Flow Velocity (m/s)

- < 0.25
- 0.25 - 0.5
- 0.5 - 0.75
- 0.75 - 1
- 1 - 1.25
- 1.25 - 1.5
- 1.5 - 1.75
- 1.75 - 2
- 2 - 3
- > 3



SCALE: 1:10,000 @A3

100 50 0 100 200 300 Meters

DISCLAIMER
The information shown on this map has been produced from the Townsville City Council's digital database. There is no warranty implied or expressed regarding the accuracy or completeness of the data. The data has been compiled for information and convenience only, and it is the responsibility of the user to verify all information before placing reliance on it. For accurate service locations please contact the Customer Services Centre on 1300 878 001.
This is not a legal document and is published for information and convenience only. The Townsville City Council takes no responsibility for any errors or omissions herein or for any acts that may occur due to its use.

Produced by:
INFRASTRUCTURE PLANNING
Strategic Planning
DATE: 04/03/2012
DATE PRINTED: 4/03/2013
DRAWN BY: WBB
DIGITAL FILE: RossCreek_FigD24.mxd
© Townsville City Council 2013



**ROSS CREEK
FLOOD STUDY
100 YEAR ARI**

City/South Townsville

FIGURE D24.8

Legend

Flow Velocity (m/s)

- < 0.25
- 0.25 - 0.5
- 0.5 - 0.75
- 0.75 - 1
- 1 - 1.25
- 1.25 - 1.5
- 1.5 - 1.75
- 1.75 - 2
- 2 - 3
- > 3



SCALE: 1:10,000 @A3

100 50 0 100 200 300 Meters

DISCLAIMER
The information shown on this map has been produced from the Townsville City Council's digital database. There is no warranty implied or expressed regarding the accuracy or completeness of the data. The data has been compiled for information and convenience only, and it is the responsibility of the user to verify all information before placing reliance on it. For accurate service locations please contact the Customer Services Centre on 1300 878 001.
This is not a legal document and is published for information and convenience only. The Townsville City Council takes no responsibility for any errors or omissions herein or for any acts that may occur due to its use.

Produced by:
INFRASTRUCTURE PLANNING
Strategic Planning
DATE: 04/03/2012
DATE PRINTED: 4/03/2013
DRAWN BY: WBB
DIGITAL FILE: RossCreek_FigD24.mxd
© Townsville City Council 2013



**ROSS CREEK
FLOOD STUDY
200 YEAR ARI**

Cranbrook

FIGURE D25.1

Legend

Flow Velocity (m/s)

- < 0.25
- 0.25 - 0.5
- 0.5 - 0.75
- 0.75 - 1
- 1 - 1.25
- 1.25 - 1.5
- 1.5 - 1.75
- 1.75 - 2
- 2 - 3
- > 3



SCALE: 1:10,000 @A3

100 50 0 100 200 300 Meters

DISCLAIMER
The information shown on this map has been produced from the Townsville City Council's digital database. There is no warranty implied or expressed regarding the accuracy or completeness of the data. The data has been compiled for information and convenience only, and it is the responsibility of the user to verify all information before placing reliance on it. For accurate service locations please contact the Customer Services Centre on 1300 878 001.
This is not a legal document and is published for information and convenience only. The Townsville City Council takes no responsibility for any errors or omissions herein or for any acts that may occur due to its use.

Produced by:
INFRASTRUCTURE PLANNING
Strategic Planning
DATE: 04/03/2012
DATE PRINTED: 4/03/2013
DRAWN BY: WBB
DIGITAL FILE: RossCreek_FigD25.mxd
© Townsville City Council 2013



**ROSS CREEK
FLOOD STUDY
200 YEAR ARI**

Aitkenvale/Mundingburra

FIGURE D25.2

Legend

Flow Velocity (m/s)

- < 0.25
- 0.25 - 0.5
- 0.5 - 0.75
- 0.75 - 1
- 1 - 1.25
- 1.25 - 1.5
- 1.5 - 1.75
- 1.75 - 2
- 2 - 3
- > 3



SCALE: 1:10,000 @A3

100 50 0 100 200 300 Meters

DISCLAIMER
The information shown on this map has been produced from the Townsville City Council's digital database. There is no warranty implied or expressed regarding the accuracy or completeness of the data. The data has been compiled for information and convenience only, and it is the responsibility of the user to verify all information before placing reliance on it. For accurate service locations please contact the Customer Services Centre on 1300 878 001.
This is not a legal document and is published for information and convenience only. The Townsville City Council takes no responsibility for any errors or omissions herein or for any acts that may occur due to its use.

Produced by:
INFRASTRUCTURE PLANNING
Strategic Planning
DATE: 04/03/2012
DATE PRINTED: 4/03/2013
DRAWN BY: WBB
DIGITAL FILE: RossCreek_FigD25.mxd
© Townsville City Council 2013



**ROSS CREEK
FLOOD STUDY
200 YEAR ARI**

Rosslea/Mysterton/Hermit Park

FIGURE D25.3

Legend

Flow Velocity (m/s)

- < 0.25
- 0.25 - 0.5
- 0.5 - 0.75
- 0.75 - 1
- 1 - 1.25
- 1.25 - 1.5
- 1.5 - 1.75
- 1.75 - 2
- 2 - 3
- > 3



SCALE: 1:10,000 @A3

100 50 0 100 200 300 Meters

DISCLAIMER
The information shown on this map has been produced from the Townsville City Council's digital database. There is no warranty implied or expressed regarding the accuracy or completeness of the data. The data has been compiled for information and convenience only, and it is the responsibility of the user to verify all information before placing reliance on it. For accurate service locations please contact the Customer Services Centre on 1300 878 001.
This is not a legal document and is published for information and convenience only. The Townsville City Council takes no responsibility for any errors or omissions herein or for any acts that may occur due to its use.

Produced by:
INFRASTRUCTURE PLANNING
Strategic Planning
DATE: 04/03/2012
DATE PRINTED: 4/03/2013
DRAWN BY: WBB
DIGITAL FILE: RossCreek_FigD25.mxd
© Townsville City Council 2013



**ROSS CREEK
FLOOD STUDY
200 YEAR ARI**

Railway Estate/South Townsville

FIGURE D25.4

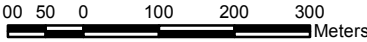
Legend

Flow Velocity (m/s)

- < 0.25
- 0.25 - 0.5
- 0.5 - 0.75
- 0.75 - 1
- 1 - 1.25
- 1.25 - 1.5
- 1.5 - 1.75
- 1.75 - 2
- 2 - 3
- > 3



SCALE: 1:10,000 @A3



DISCLAIMER
The information shown on this map has been produced from the Townsville City Council's digital database. There is no warranty implied or expressed regarding the accuracy or completeness of the data. The data has been compiled for information and convenience only, and it is the responsibility of the user to verify all information before placing reliance on it. For accurate service locations please contact the Customer Services Centre on 1300 878 001.
This is not a legal document and is published for information and convenience only. The Townsville City Council takes no responsibility for any errors or omissions herein or for any acts that may occur due to its use.

Produced by:
INFRASTRUCTURE PLANNING
Strategic Planning
DATE: 04/03/2012
DATE PRINTED: 4/03/2013
DRAWN BY: WBB
DIGITAL FILE: RossCreek_FigD25.mxd
© Townsville City Council 2013



**ROSS CREEK
FLOOD STUDY
200 YEAR ARI**

Heatley/Vincent

FIGURE D25.5

Legend

Flow Velocity (m/s)

- < 0.25
- 0.25 - 0.5
- 0.5 - 0.75
- 0.75 - 1
- 1 - 1.25
- 1.25 - 1.5
- 1.5 - 1.75
- 1.75 - 2
- 2 - 3
- > 3



SCALE: 1:10,000 @A3

100 50 0 100 200 300 Meters

DISCLAIMER
The information shown on this map has been produced from the Townsville City Council's digital database. There is no warranty implied or expressed regarding the accuracy or completeness of the data. The data has been compiled for information and convenience only, and it is the responsibility of the user to verify all information before placing reliance on it. For accurate service locations please contact the Customer Services Centre on 1300 878 001.
This is not a legal document and is published for information and convenience only. The Townsville City Council takes no responsibility for any errors or omissions herein or for any acts that may occur due to its use.

Produced by:
INFRASTRUCTURE PLANNING
Strategic Planning
DATE: 04/03/2012
DATE PRINTED: 4/03/2013
DRAWN BY: WBB
DIGITAL FILE: RossCreek_FigD25.mxd
© Townsville City Council 2013



**ROSS CREEK
FLOOD STUDY
200 YEAR ARI**

Gulliver/Currajong/Pimlico

FIGURE D25.6

Legend

Flow Velocity (m/s)

- < 0.25
- 0.25 - 0.5
- 0.5 - 0.75
- 0.75 - 1
- 1 - 1.25
- 1.25 - 1.5
- 1.5 - 1.75
- 1.75 - 2
- 2 - 3
- > 3



SCALE: 1:10,000 @A3

100 50 0 100 200 300 Meters

DISCLAIMER
The information shown on this map has been produced from the Townsville City Council's digital database. There is no warranty implied or expressed regarding the accuracy or completeness of the data. The data has been compiled for information and convenience only, and it is the responsibility of the user to verify all information before placing reliance on it. For accurate service locations please contact the Customer Services Centre on 1300 878 001.
This is not a legal document and is published for information and convenience only. The Townsville City Council takes no responsibility for any errors or omissions herein or for any acts that may occur due to its use.

Produced by:
INFRASTRUCTURE PLANNING
Strategic Planning
DATE: 04/03/2012
DATE PRINTED: 4/03/2013
DRAWN BY: WBB
DIGITAL FILE: RossCreek_FigD25.mxd
© Townsville City Council 2013



**ROSS CREEK
FLOOD STUDY
200 YEAR ARI**

West End/Hyde Park

FIGURE D25.7

Legend

Flow Velocity (m/s)

- < 0.25
- 0.25 - 0.5
- 0.5 - 0.75
- 0.75 - 1
- 1 - 1.25
- 1.25 - 1.5
- 1.5 - 1.75
- 1.75 - 2
- 2 - 3
- > 3



SCALE: 1:10,000 @A3

100 50 0 100 200 300 Meters

DISCLAIMER
The information shown on this map has been produced from the Townsville City Council's digital database. There is no warranty implied or expressed regarding the accuracy or completeness of the data. The data has been compiled for information and convenience only, and it is the responsibility of the user to verify all information before placing reliance on it. For accurate service locations please contact the Customer Services Centre on 1300 878 001.
This is not a legal document and is published for information and convenience only. The Townsville City Council takes no responsibility for any errors or omissions herein or for any acts that may occur due to its use.

Produced by:
INFRASTRUCTURE PLANNING
Strategic Planning
DATE: 04/03/2012
DATE PRINTED: 4/03/2013
DRAWN BY: WBB
DIGITAL FILE: RossCreek_FigD25.mxd
© Townsville City Council 2013



**ROSS CREEK
FLOOD STUDY
200 YEAR ARI**

City/South Townsville

FIGURE D25.8

Legend

Flow Velocity (m/s)

- < 0.25
- 0.25 - 0.5
- 0.5 - 0.75
- 0.75 - 1
- 1 - 1.25
- 1.25 - 1.5
- 1.5 - 1.75
- 1.75 - 2
- 2 - 3
- > 3



SCALE: 1:10,000 @A3

100 50 0 100 200 300 Meters

DISCLAIMER
The information shown on this map has been produced from the Townsville City Council's digital database. There is no warranty implied or expressed regarding the accuracy or completeness of the data. The data has been compiled for information and convenience only, and it is the responsibility of the user to verify all information before placing reliance on it. For accurate service locations please contact the Customer Services Centre on 1300 878 001.
This is not a legal document and is published for information and convenience only. The Townsville City Council takes no responsibility for any errors or omissions herein or for any acts that may occur due to its use.

Produced by:
INFRASTRUCTURE PLANNING
Strategic Planning
DATE: 04/03/2012
DATE PRINTED: 4/03/2013
DRAWN BY: WBB
DIGITAL FILE: RossCreek_FigD25.mxd
© Townsville City Council 2013



**ROSS CREEK
FLOOD STUDY
500 YEAR ARI**

Cranbrook

FIGURE D26.1

Legend

Flow Velocity (m/s)

- < 0.25
- 0.25 - 0.5
- 0.5 - 0.75
- 0.75 - 1
- 1 - 1.25
- 1.25 - 1.5
- 1.5 - 1.75
- 1.75 - 2
- 2 - 3
- > 3



SCALE: 1:10,000 @A3

100 50 0 100 200 300 Meters

DISCLAIMER
The information shown on this map has been produced from the Townsville City Council's digital database. There is no warranty implied or expressed regarding the accuracy or completeness of the data. The data has been compiled for information and convenience only, and it is the responsibility of the user to verify all information before placing reliance on it. For accurate service locations please contact the Customer Services Centre on 1300 878 001.
This is not a legal document and is published for information and convenience only. The Townsville City Council takes no responsibility for any errors or omissions herein or for any acts that may occur due to its use.

Produced by:
INFRASTRUCTURE PLANNING
Strategic Planning
DATE: 04/03/2012
DATE PRINTED: 4/03/2013
DRAWN BY: WBB
DIGITAL FILE: RossCreek_FigD26.mxd
© Townsville City Council 2013

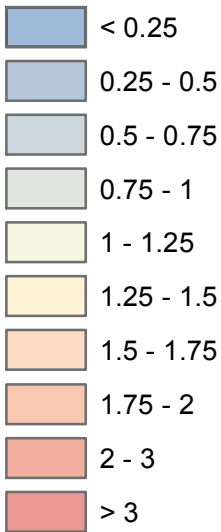
ROSS CREEK
FLOOD STUDY
500 YEAR ARI

Aitkenvale/Mundingburra

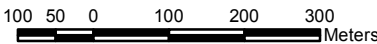
FIGURE D26.2

Legend

Flow Velocity (m/s)



SCALE: 1:10,000 @A3



DISCLAIMER

The information shown on this map has been produced from the Townsville City Council's digital database. There is no warranty implied or expressed regarding the accuracy or completeness of the data. The data has been compiled for information and convenience only, and it is the responsibility of the user to verify all information before placing reliance on it. For accurate service locations please contact the Customer Services Centre on 1300 878 001.

This is not a legal document and is published for information and convenience only. The Townsville City Council takes no responsibility for any errors or omissions herein or for any acts that may occur due to its use.

Produced by:
INFRASTRUCTURE PLANNING
Strategic Planning
DATE: 04/03/2012
DATE PRINTED: 4/03/2013
DRAWN BY: WBB
DIGITAL FILE: RossCreek_FigD26.mxd
© Townsville City Council 2013



**ROSS CREEK
FLOOD STUDY
500 YEAR ARI**

Rosslea/Mysterton/Hermit Park

FIGURE D26.3

Legend

Flow Velocity (m/s)

- < 0.25
- 0.25 - 0.5
- 0.5 - 0.75
- 0.75 - 1
- 1 - 1.25
- 1.25 - 1.5
- 1.5 - 1.75
- 1.75 - 2
- 2 - 3
- > 3



SCALE: 1:10,000 @A3

100 50 0 100 200 300 Meters

DISCLAIMER
The information shown on this map has been produced from the Townsville City Council's digital database. There is no warranty implied or expressed regarding the accuracy or completeness of the data. The data has been compiled for information and convenience only, and it is the responsibility of the user to verify all information before placing reliance on it. For accurate service locations please contact the Customer Services Centre on 1300 878 001.
This is not a legal document and is published for information and convenience only. The Townsville City Council takes no responsibility for any errors or omissions herein or for any acts that may occur due to its use.

Produced by:
INFRASTRUCTURE PLANNING
Strategic Planning
DATE: 04/03/2012
DATE PRINTED: 4/03/2013
DRAWN BY: WBB
DIGITAL FILE: RossCreek_FigD26.mxd
© Townsville City Council 2013



**ROSS CREEK
FLOOD STUDY
500 YEAR ARI**

Railway Estate/South Townsville

FIGURE D26.4

Legend

Flow Velocity (m/s)

- < 0.25
- 0.25 - 0.5
- 0.5 - 0.75
- 0.75 - 1
- 1 - 1.25
- 1.25 - 1.5
- 1.5 - 1.75
- 1.75 - 2
- 2 - 3
- > 3



SCALE: 1:10,000 @A3

100 50 0 100 200 300 Meters

DISCLAIMER
The information shown on this map has been produced from the Townsville City Council's digital database. There is no warranty implied or expressed regarding the accuracy or completeness of the data. The data has been compiled for information and convenience only, and it is the responsibility of the user to verify all information before placing reliance on it. For accurate service locations please contact the Customer Services Centre on 1300 878 001.
This is not a legal document and is published for information and convenience only. The Townsville City Council takes no responsibility for any errors or omissions herein or for any acts that may occur due to its use.

Produced by:
INFRASTRUCTURE PLANNING
Strategic Planning
DATE: 04/03/2012
DATE PRINTED: 4/03/2013
DRAWN BY: WBB
DIGITAL FILE: RossCreek_FigD26.mxd
© Townsville City Council 2013



**ROSS CREEK
FLOOD STUDY
500 YEAR ARI**

Heatley/Vincent

FIGURE D26.5

Legend

Flow Velocity (m/s)

- < 0.25
- 0.25 - 0.5
- 0.5 - 0.75
- 0.75 - 1
- 1 - 1.25
- 1.25 - 1.5
- 1.5 - 1.75
- 1.75 - 2
- 2 - 3
- > 3



SCALE: 1:10,000 @A3

100 50 0 100 200 300 Meters

DISCLAIMER
The information shown on this map has been produced from the Townsville City Council's digital database. There is no warranty implied or expressed regarding the accuracy or completeness of the data. The data has been compiled for information and convenience only, and it is the responsibility of the user to verify all information before placing reliance on it. For accurate service locations please contact the Customer Services Centre on 1300 878 001.
This is not a legal document and is published for information and convenience only. The Townsville City Council takes no responsibility for any errors or omissions herein or for any acts that may occur due to its use.

Produced by:
INFRASTRUCTURE PLANNING
Strategic Planning
DATE: 04/03/2012
DATE PRINTED: 4/03/2013
DRAWN BY: WBB
DIGITAL FILE: RossCreek_FigD26.mxd
© Townsville City Council 2013



**ROSS CREEK
FLOOD STUDY
500 YEAR ARI**

Gulliver/Currajong/Pimlico

FIGURE D26.6

Legend

Flow Velocity (m/s)

- < 0.25
- 0.25 - 0.5
- 0.5 - 0.75
- 0.75 - 1
- 1 - 1.25
- 1.25 - 1.5
- 1.5 - 1.75
- 1.75 - 2
- 2 - 3
- > 3



SCALE: 1:10,000 @A3

100 50 0 100 200 300 Meters

DISCLAIMER
The information shown on this map has been produced from the Townsville City Council's digital database. There is no warranty implied or expressed regarding the accuracy or completeness of the data. The data has been compiled for information and convenience only, and it is the responsibility of the user to verify all information before placing reliance on it. For accurate service locations please contact the Customer Services Centre on 1300 878 001.
This is not a legal document and is published for information and convenience only. The Townsville City Council takes no responsibility for any errors or omissions herein or for any acts that may occur due to its use.

Produced by:
INFRASTRUCTURE PLANNING
Strategic Planning
DATE: 04/03/2012
DATE PRINTED: 4/03/2013
DRAWN BY: WBB
DIGITAL FILE: RossCreek_FigD26.mxd
© Townsville City Council 2013



**ROSS CREEK
FLOOD STUDY
500 YEAR ARI**

West End/Hyde Park

FIGURE D26.7

Legend

Flow Velocity (m/s)

- < 0.25
- 0.25 - 0.5
- 0.5 - 0.75
- 0.75 - 1
- 1 - 1.25
- 1.25 - 1.5
- 1.5 - 1.75
- 1.75 - 2
- 2 - 3
- > 3



SCALE: 1:10,000 @A3

100 50 0 100 200 300 Meters

DISCLAIMER
The information shown on this map has been produced from the Townsville City Council's digital database. There is no warranty implied or expressed regarding the accuracy or completeness of the data. The data has been compiled for information and convenience only, and it is the responsibility of the user to verify all information before placing reliance on it. For accurate service locations please contact the Customer Services Centre on 1300 878 001.
This is not a legal document and is published for information and convenience only. The Townsville City Council takes no responsibility for any errors or omissions herein or for any acts that may occur due to its use.

Produced by:
INFRASTRUCTURE PLANNING
Strategic Planning
DATE: 04/03/2012
DATE PRINTED: 4/03/2013
DRAWN BY: WBB
DIGITAL FILE: RossCreek_FigD26.mxd
© Townsville City Council 2013



**ROSS CREEK
FLOOD STUDY
500 YEAR ARI**

City/South Townsville

FIGURE D26.8

Legend

Flow Velocity (m/s)

- < 0.25
- 0.25 - 0.5
- 0.5 - 0.75
- 0.75 - 1
- 1 - 1.25
- 1.25 - 1.5
- 1.5 - 1.75
- 1.75 - 2
- 2 - 3
- > 3



SCALE: 1:10,000 @A3

100 50 0 100 200 300 Meters

DISCLAIMER
The information shown on this map has been produced from the Townsville City Council's digital database. There is no warranty implied or expressed regarding the accuracy or completeness of the data. The data has been compiled for information and convenience only, and it is the responsibility of the user to verify all information before placing reliance on it. For accurate service locations please contact the Customer Services Centre on 1300 878 001.
This is not a legal document and is published for information and convenience only. The Townsville City Council takes no responsibility for any errors or omissions herein or for any acts that may occur due to its use.

Produced by:
INFRASTRUCTURE PLANNING
Strategic Planning
DATE: 04/03/2012
DATE PRINTED: 4/03/2013
DRAWN BY: WBB
DIGITAL FILE: RossCreek_FigD26.mxd
© Townsville City Council 2013



**ROSS CREEK
FLOOD STUDY
PMF**

Cranbrook

FIGURE D27.1

Legend

Flow Velocity (m/s)

- < 0.25
- 0.25 - 0.5
- 0.5 - 0.75
- 0.75 - 1
- 1 - 1.25
- 1.25 - 1.5
- 1.5 - 1.75
- 1.75 - 2
- 2 - 3
- > 3



SCALE: 1:10,000 @A3

100 50 0 100 200 300 Meters

DISCLAIMER
The information shown on this map has been produced from the Townsville City Council's digital database. There is no warranty implied or expressed regarding the accuracy or completeness of the data. The data has been compiled for information and convenience only, and it is the responsibility of the user to verify all information before placing reliance on it. For accurate service locations please contact the Customer Services Centre on 1300 878 001.
This is not a legal document and is published for information and convenience only. The Townsville City Council takes no responsibility for any errors or omissions herein or for any acts that may occur due to its use.

Produced by:
INFRASTRUCTURE PLANNING
Strategic Planning
DATE: 04/03/2012
DATE PRINTED: 4/03/2013
DRAWN BY: WBB
DIGITAL FILE: RossCreek_FigD27.mxd
© Townsville City Council 2013



ROSS CREEK FLOOD STUDY PMF

Aitkenvale/Mundingburra

FIGURE D27.2

Legend

Flow Velocity (m/s)

- < 0.25
- 0.25 - 0.5
- 0.5 - 0.75
- 0.75 - 1
- 1 - 1.25
- 1.25 - 1.5
- 1.5 - 1.75
- 1.75 - 2
- 2 - 3
- > 3



SCALE: 1:10,000 @A3

100 50 0 100 200 300 Meters

DISCLAIMER
The information shown on this map has been produced from the Townsville City Council's digital database. There is no warranty implied or expressed regarding the accuracy or completeness of the data. The data has been compiled for information and convenience only, and it is the responsibility of the user to verify all information before placing reliance on it. For accurate service locations please contact the Customer Services Centre on 1300 878 001.
This is not a legal document and is published for information and convenience only. The Townsville City Council takes no responsibility for any errors or omissions herein or for any acts that may occur due to its use.

Produced by:
INFRASTRUCTURE PLANNING
Strategic Planning
DATE: 04/03/2012
DATE PRINTED: 4/03/2013
DRAWN BY: WBB
DIGITAL FILE: RossCreek_FigD27.mxd
© Townsville City Council 2013



**ROSS CREEK
FLOOD STUDY
PMF**

Rosslea/Mysterton/Hermit Park

FIGURE D27.3

Legend

Flow Velocity (m/s)

- < 0.25
- 0.25 - 0.5
- 0.5 - 0.75
- 0.75 - 1
- 1 - 1.25
- 1.25 - 1.5
- 1.5 - 1.75
- 1.75 - 2
- 2 - 3
- > 3



SCALE: 1:10,000 @A3

100 50 0 100 200 300 Meters

DISCLAIMER
The information shown on this map has been produced from the Townsville City Council's digital database. There is no warranty implied or expressed regarding the accuracy or completeness of the data. The data has been compiled for information and convenience only, and it is the responsibility of the user to verify all information before placing reliance on it. For accurate service locations please contact the Customer Services Centre on 1300 878 001.
This is not a legal document and is published for information and convenience only. The Townsville City Council takes no responsibility for any errors or omissions herein or for any acts that may occur due to its use.

Produced by:
INFRASTRUCTURE PLANNING
Strategic Planning
DATE: 04/03/2012
DATE PRINTED: 4/03/2013
DRAWN BY: WBB
DIGITAL FILE: RossCreek_FigD27.mxd
© Townsville City Council 2013



**ROSS CREEK
FLOOD STUDY
PMF**

Railway Estate/South Townsville

FIGURE D27.4

Legend

Flow Velocity (m/s)

- < 0.25
- 0.25 - 0.5
- 0.5 - 0.75
- 0.75 - 1
- 1 - 1.25
- 1.25 - 1.5
- 1.5 - 1.75
- 1.75 - 2
- 2 - 3
- > 3



SCALE: 1:10,000 @A3

100 50 0 100 200 300 Meters

DISCLAIMER
The information shown on this map has been produced from the Townsville City Council's digital database. There is no warranty implied or expressed regarding the accuracy or completeness of the data. The data has been compiled for information and convenience only, and it is the responsibility of the user to verify all information before placing reliance on it. For accurate service locations please contact the Customer Services Centre on 1300 878 001.
This is not a legal document and is published for information and convenience only. The Townsville City Council takes no responsibility for any errors or omissions herein or for any acts that may occur due to its use.

Produced by:
INFRASTRUCTURE PLANNING
Strategic Planning
DATE: 04/03/2012
DATE PRINTED: 4/03/2013
DRAWN BY: WBB
DIGITAL FILE: RossCreek_FigD27.mxd
© Townsville City Council 2013