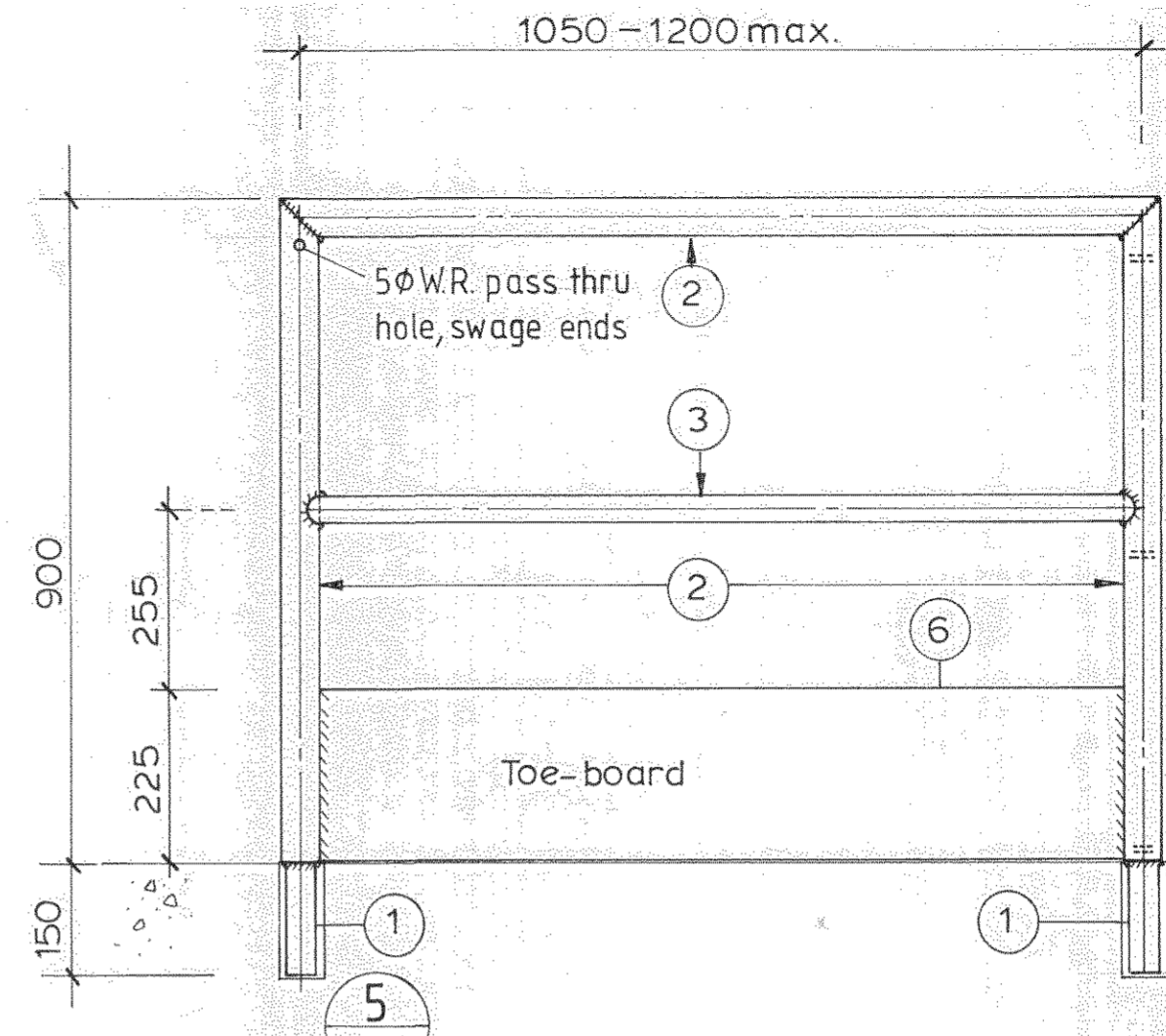
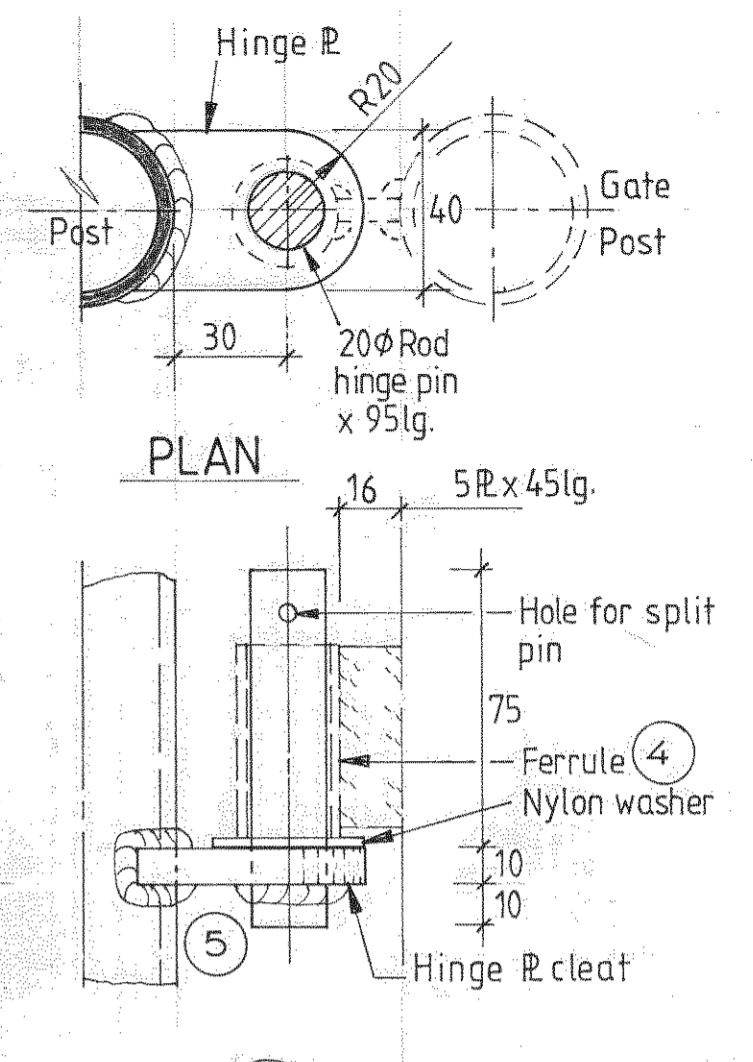


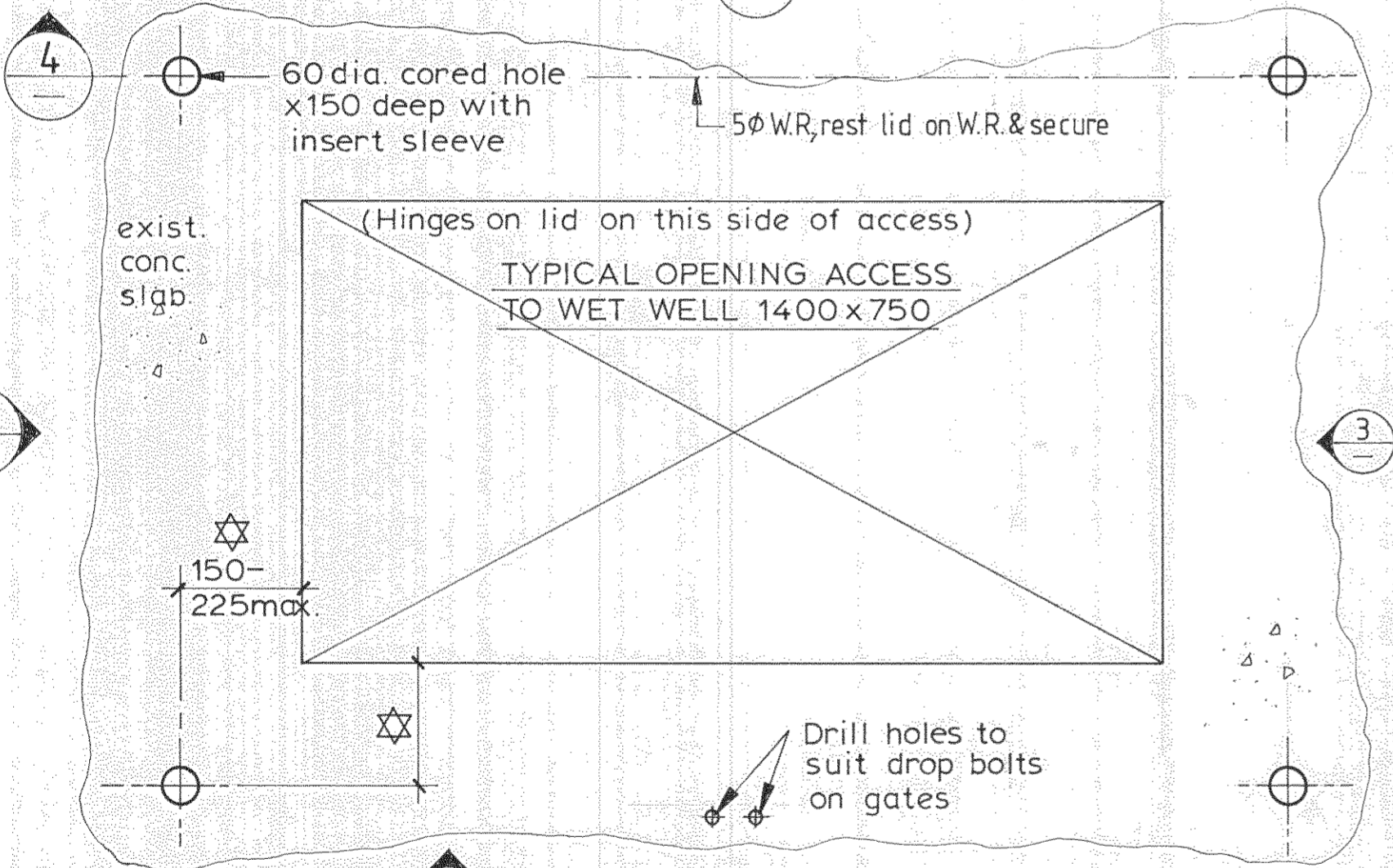
ELEVATION 1



ELEVATION 2 3 MIRROR SAME



PLAN

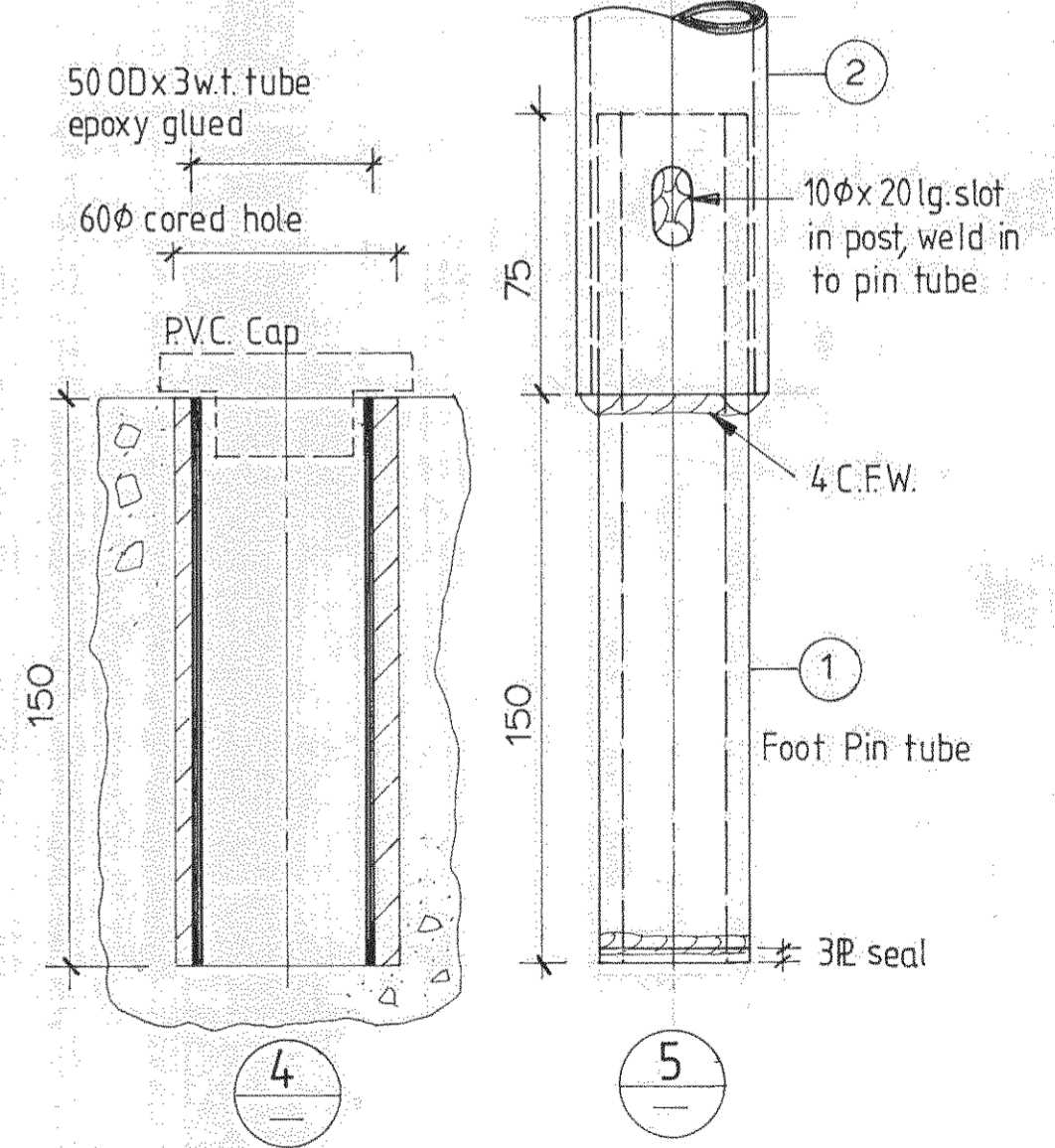


PLAN 1:10

MEMBER SCHEDULE - GUARDRAIL / GATES				
Item	Size	Description	Qty	Mass
1	400Dx6wt.Tube x225lg. ea.	Foot Pin	900mm	1.56
2	500Dx4wt.Tube	Top rails, posts	13400mm	20.9
3	400Dx2wt.Tube	Mid rails	4100mm	2.65
4	28 ODx3wt.Tube x50lg. ea.(6off)	Hinge ferrule	300mm	0.20
5	10R / 20φ Rod	Hinge pin cleat	6 OFF	0.20
6	5R	Toe-board	0.9sq.m.	3.8
7	Drop bolt (manuf.'s standard) (S.S.rivet to post)		2 OFF	0.5
8	5φ S.S.wire rope x~20m lg.	Rear tie rope in PVC sheath	1 OFF	1.10

NOTES:
 1. All materials are 6061-T6 ALUMINIUM ALLOY U.O.N.
 2. Welding to conform with AS 1665
 3. Design conforms with AS 1657

Total Weight ≈ 31kg



ZONE REF.	REVISIONS	BY	CKD.	DATE
1				
2				
3				
4				
5				
6				
7				
8				



ASSOCIATED DRAWINGS				TOWNSVILLE CITY COUNCIL		
LEVEL	DATUM	F.B.	L.B.	APPROVED	DES.	DOB I.D.
				<i>[Signature]</i> 22 Mar 95	DRN.	<i>[Signature]</i>
				DIRECTOR-ENGINEERING SERVICES	TKD.	
N.Q.E.B.	A.T.C.	D.O.	FILE NO.	<i>[Signature]</i> 20 MAR 95	CKD.	<i>[Signature]</i>
				MANAGER PLANNING & INVESTIGATIONS	CD.	<i>[Signature]</i> 17/3/05

SEWERAGE-STANDARDS						
TRANSPORTABLE GUARD RAIL AND GATE SET TO SUIT WET WELL ACCESS TO SUBMERSIBLE PUMP STATIONS						
DATE	M/FILM	SCALE	DRAWING NO.			
16-3-95		1:10 1:2	43151	A2		