

State Assessment and Referral Agency - Matters of Interest Report

Matters of Interest for all selected Lot Plans

State-controlled road

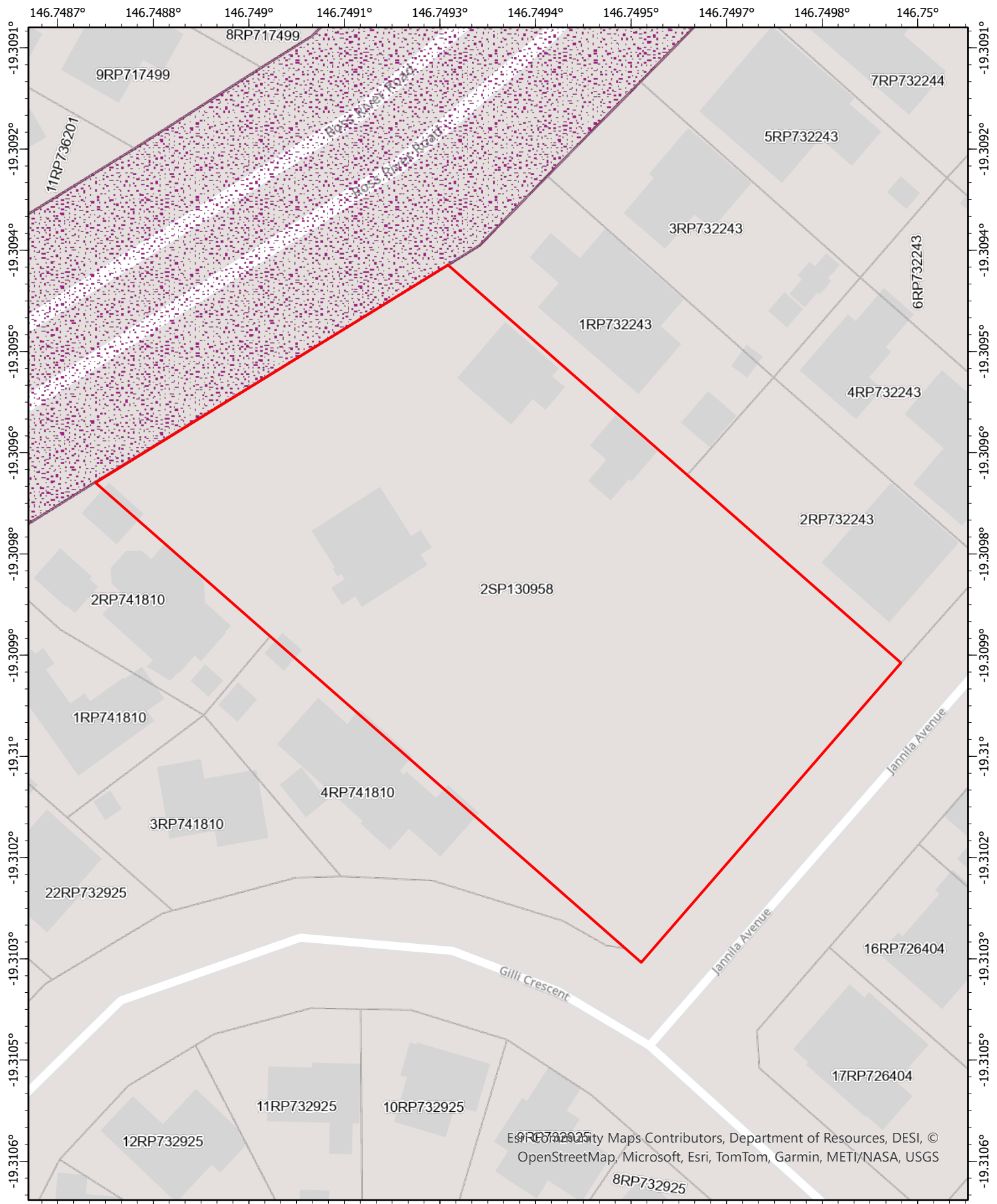
Area within 25m of a State-controlled road


Matters of Interest by Lot Plan

Lot Plan: 2SP130958 (Area: 6115 m²)

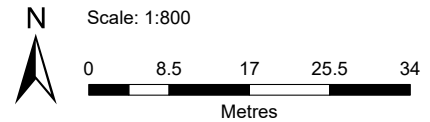
State-controlled road

Area within 25m of a State-controlled road



 State-controlled road

Date: 24/07/2025



Queensland
Government



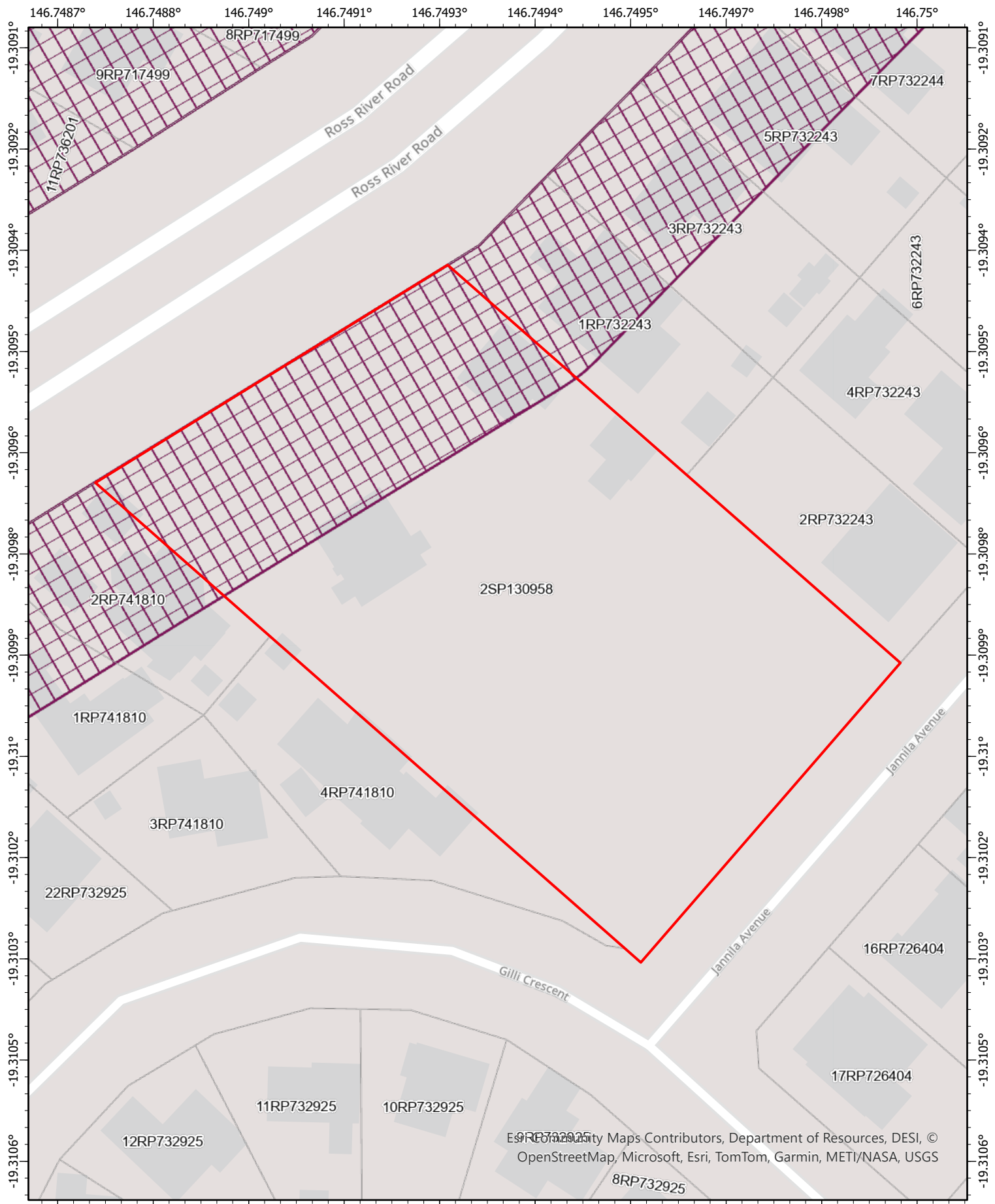
Queensland
Government


Disclaimer This map has been generated from the information supplied to the Queensland Government for the purposes of the Development Assessment Mapping System. The map generated has been prepared with due care based on the best available information at the time of publication. The State of Queensland holds no responsibility for any errors, inconsistencies or omissions within this document. Any decisions made by other parties based on this document are solely the responsibility of those parties.

Document Set ID: 27418130 Subject to the full terms and conditions available on the department's website.

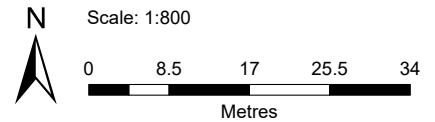
© The State of Queensland 2025.

Version: 1, Version Date: 08/08/2025



 Area within 25m of a State-controlled road

Date: 24/07/2025



Queensland Government



Disclaimer This map has been generated from the information supplied to the Queensland Government for the purposes of the Development Assessment Mapping System. The map generated has been prepared with due care based on the best available information at the time of publication. The State of Queensland holds no responsibility for any errors, inconsistencies or omissions within this document. Any decisions made by other parties based on this document are solely the responsibility of those parties.

© The State of Queensland 2025.

Document Set ID: 27418130 Subject to the full terms and conditions available on the department's website.

Version: 1, Version Date: 08/08/2025