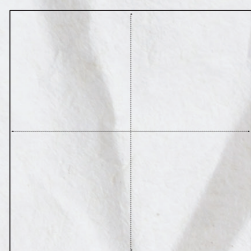
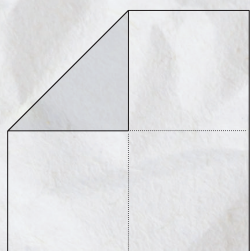


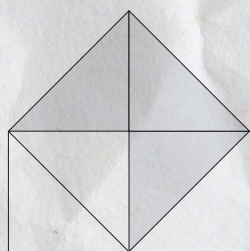
RECYCLING CHATTERBOX



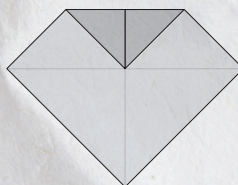
1. Fold along the thick dotted lines to make a crease, then unfold.



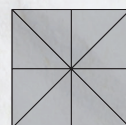
2. Turn chatterbox over so that the pictures are facing down.



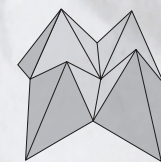
3. Fold corners so that the points meet in the centre.



4. Turn over - fold all corners so that the points meet in the centre.



5. Fold in half so the main headings (eg. RECYCLE) are facing out.



6. Insert thumbs and forefingers under the squares and move chatterbox in and out to play.

How to play: Pick a word and spell it out. Pick a number and count it out. Choose a question and open to find the answer!



REFUSE
WHAT YOU DO NOT NEED

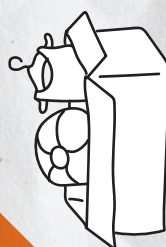


2



Is it a good idea to **refuse** plastic straws?

Yes. Plastic straws cannot be **recycled** and often end up in our oceans harming marine animals like turtles.



Can you **reuse** your old or outgrown clothes, toys and furniture?

Yes. You can **reuse** items by upcycling them or donating to friends, family and charities like Vinnies and Salvation Army.

3



Can you **refuse** single use plastic bags?

Yes. **Refuse** single use plastic bags and use **reusable** bags to save 160 plastic bags per person, each year.



Will a compost bin **reduce** the amount of waste you produce, and if so by what percent?

Yes. A compost bin can **reduce** your waste by 40% by **recycling** food and garden scraps.

4

REDUCE
THE AMOUNT OF WASTE YOU CREATE



Will purchasing products with no or minimal packaging **reduce** your waste?

Yes. E.g. Purchase apples loose and place them in a **reusable** produce bag to avoid excess waste.



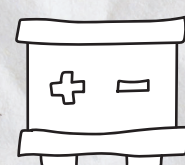
Can you **recycle** all glass in Townsville's yellow **recycling** bins?

No, only glass jars and bottles. You cannot **recycle** broken glass, light bulbs or ceramics.

5

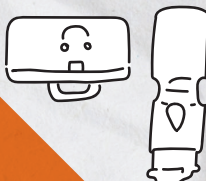
6

RECYCLE
AS MUCH AS POSSIBLE



Can you **recycle** green waste, car batteries and white goods free of charge in Townsville?

Yes. The tip transfer stations at Harvey's Range and Stuart accept all **recyclables** free of charge except tyres.



Is it better to use a **reusable** water bottle, lunchbox and food containers at school and work?

Yes. **Reusable** is always best. Use again and again instead of buying new each time to save money and the environment.

REUSE
ITEMS YOU ALREADY HAVE, INSTEAD OF BUYING SOMETHING NEW



1

8