



**ROSS CREEK
FLOOD STUDY
PMF**

Heatley/Vincent

FIGURE D27.5

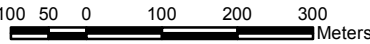
Legend

Flow Velocity (m/s)

- < 0.25
- 0.25 - 0.5
- 0.5 - 0.75
- 0.75 - 1
- 1 - 1.25
- 1.25 - 1.5
- 1.5 - 1.75
- 1.75 - 2
- 2 - 3
- > 3

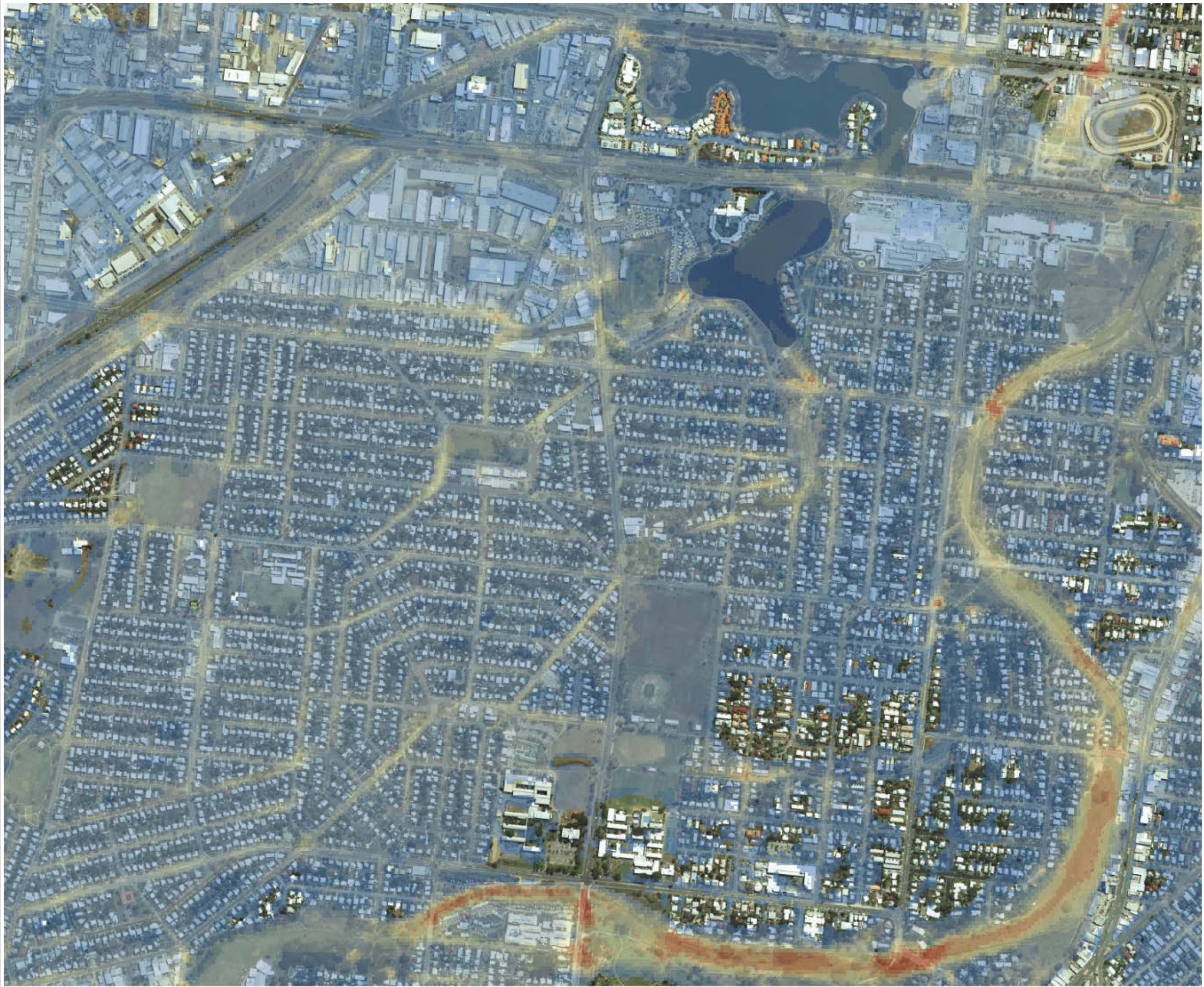


SCALE: 1:10,000 @A3



DISCLAIMER
The information shown on this map has been produced from the Townsville City Council's digital database. There is no warranty implied or expressed regarding the accuracy or completeness of the data. The data has been compiled for information and convenience only, and it is the responsibility of the user to verify all information before placing reliance on it. For accurate service locations please contact the Customer Services Centre on 1300 878 001.
This is not a legal document and is published for information and convenience only. The Townsville City Council takes no responsibility for any errors or omissions herein or for any acts that may occur due to its use.

Produced by:
INFRASTRUCTURE PLANNING
Strategic Planning
DATE: 04/03/2012
DATE PRINTED: 4/03/2013
DRAWN BY: WBB
DIGITAL FILE: RossCreek_FigD27.mxd
© Townsville City Council 2013



**ROSS CREEK
FLOOD STUDY
PMF**

Gulliver/Currajong/Pimlico

FIGURE D27.6

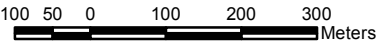
Legend

Flow Velocity (m/s)

- < 0.25
- 0.25 - 0.5
- 0.5 - 0.75
- 0.75 - 1
- 1 - 1.25
- 1.25 - 1.5
- 1.5 - 1.75
- 1.75 - 2
- 2 - 3
- > 3

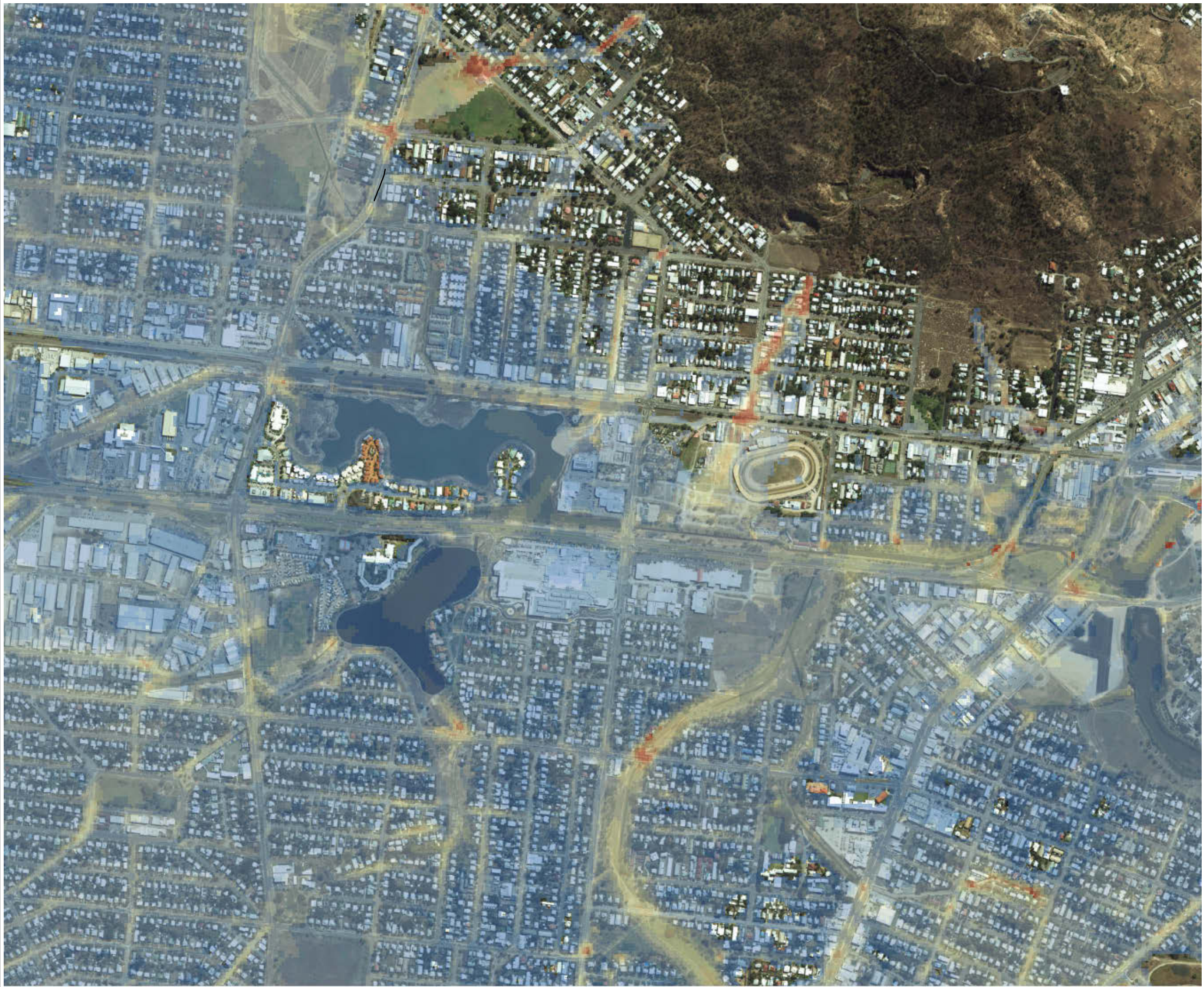


SCALE: 1:10,000 @A3



DISCLAIMER
The information shown on this map has been produced from the Townsville City Council's digital database. There is no warranty implied or expressed regarding the accuracy or completeness of the data. The data has been compiled for information and convenience only, and it is the responsibility of the user to verify all information before placing reliance on it. For accurate service locations please contact the Customer Services Centre on 1300 878 001.
This is not a legal document and is published for information and convenience only. The Townsville City Council takes no responsibility for any errors or omissions herein or for any acts that may occur due to its use.

Produced by:
INFRASTRUCTURE PLANNING
Strategic Planning
DATE: 04/03/2012
DATE PRINTED: 4/03/2013
DRAWN BY: WBB
DIGITAL FILE: RossCreek_FigD27.mxd
© Townsville City Council 2013



**ROSS CREEK
FLOOD STUDY
PMF**

West End/Hyde Park

FIGURE D27.7

Legend

Flow Velocity (m/s)

- < 0.25
- 0.25 - 0.5
- 0.5 - 0.75
- 0.75 - 1
- 1 - 1.25
- 1.25 - 1.5
- 1.5 - 1.75
- 1.75 - 2
- 2 - 3
- > 3



SCALE: 1:10,000 @A3

100 50 0 100 200 300 Meters

DISCLAIMER
The information shown on this map has been produced from the Townsville City Council's digital database. There is no warranty implied or expressed regarding the accuracy or completeness of the data. The data has been compiled for information and convenience only, and it is the responsibility of the user to verify all information before placing reliance on it. For accurate service locations please contact the Customer Services Centre on 1300 878 001.
This is not a legal document and is published for information and convenience only. The Townsville City Council takes no responsibility for any errors or omissions herein or for any acts that may occur due to its use.

Produced by:
INFRASTRUCTURE PLANNING
Strategic Planning
DATE: 04/03/2012
DATE PRINTED: 4/03/2013
DRAWN BY: WBB
DIGITAL FILE: RossCreek_FigD27.mxd
© Townsville City Council 2013



**ROSS CREEK
FLOOD STUDY
PMF**

City/South Townsville

FIGURE D27.8

Legend

Flow Velocity (m/s)

- < 0.25
- 0.25 - 0.5
- 0.5 - 0.75
- 0.75 - 1
- 1 - 1.25
- 1.25 - 1.5
- 1.5 - 1.75
- 1.75 - 2
- 2 - 3
- > 3



SCALE: 1:10,000 @A3

100 50 0 100 200 300 Meters

DISCLAIMER
The information shown on this map has been produced from the Townsville City Council's digital database. There is no warranty implied or expressed regarding the accuracy or completeness of the data. The data has been compiled for information and convenience only, and it is the responsibility of the user to verify all information before placing reliance on it. For accurate service locations please contact the Customer Services Centre on 1300 878 001.
This is not a legal document and is published for information and convenience only. The Townsville City Council takes no responsibility for any errors or omissions herein or for any acts that may occur due to its use.

Produced by:
INFRASTRUCTURE PLANNING
Strategic Planning
DATE: 04/03/2012
DATE PRINTED: 4/03/2013
DRAWN BY: WBB
DIGITAL FILE: RossCreek_FigD27.mxd
© Townsville City Council 2013



**ROSS CREEK
FLOOD STUDY
2 YEAR ARI**

Cranbrook

FIGURE D28.1

Legend

Critical Duration

- 1 h
- 1.5 h
- 2 h
- 3 h
- 6 h
- 12 h
- 18 h
- 24 h
- 72 h



SCALE: 1:10,000 @A3

100 50 0 100 200 300 Meters

DISCLAIMER
The information shown on this map has been produced from the Townsville City Council's digital database. There is no warranty implied or expressed regarding the accuracy or completeness of the data. The data has been compiled for information and convenience only, and it is the responsibility of the user to verify all information before placing reliance on it. For accurate service locations please contact the Customer Services Centre on 1300 878 001.
This is not a legal document and is published for information and convenience only. The Townsville City Council takes no responsibility for any errors or omissions herein or for any acts that may occur due to its use.

Produced by:
INFRASTRUCTURE PLANNING
Strategic Planning
DATE: 04/03/2012
DATE PRINTED: 4/03/2013
DRAWN BY: WBB
DIGITAL FILE: RossCreek_FigD28.mxd
© Townsville City Council 2013



**ROSS CREEK
FLOOD STUDY
2 YEAR ARI**

Aitkenvale/Mundingburra

FIGURE D28.2

Legend

Critical Duration

- 1 h
- 1.5 h
- 2 h
- 3 h
- 6 h
- 12 h
- 18 h
- 24 h
- 72 h



SCALE: 1:10,000 @A3

100 50 0 100 200 300 Meters

DISCLAIMER
The information shown on this map has been produced from the Townsville City Council's digital database. There is no warranty implied or expressed regarding the accuracy or completeness of the data. The data has been compiled for information and convenience only, and it is the responsibility of the user to verify all information before placing reliance on it. For accurate service locations please contact the Customer Services Centre on 1300 878 001.
This is not a legal document and is published for information and convenience only. The Townsville City Council takes no responsibility for any errors or omissions herein or for any acts that may occur due to its use.

Produced by:
INFRASTRUCTURE PLANNING
Strategic Planning
DATE: 04/03/2012
DATE PRINTED: 4/03/2013
DRAWN BY: WBB
DIGITAL FILE: RossCreek_FigD28.mxd
© Townsville City Council 2013



**ROSS CREEK
FLOOD STUDY
2 YEAR ARI**

Rosslea/Mysterton/Hermit Park

FIGURE D28.3

Legend

Critical Duration

- 1 h
- 1.5 h
- 2 h
- 3 h
- 6 h
- 12 h
- 18 h
- 24 h
- 72 h



SCALE: 1:10,000 @A3

100 50 0 100 200 300 Meters

DISCLAIMER
The information shown on this map has been produced from the Townsville City Council's digital database. There is no warranty implied or expressed regarding the accuracy or completeness of the data. The data has been compiled for information and convenience only, and it is the responsibility of the user to verify all information before placing reliance on it. For accurate service locations please contact the Customer Services Centre on 1300 878 001.
This is not a legal document and is published for information and convenience only. The Townsville City Council takes no responsibility for any errors or omissions herein or for any acts that may occur due to its use.

Produced by:
INFRASTRUCTURE PLANNING
Strategic Planning
DATE: 04/03/2012
DATE PRINTED: 4/03/2013
DRAWN BY: WBB
DIGITAL FILE: RossCreek_FigD28.mxd
© Townsville City Council 2013



**ROSS CREEK
FLOOD STUDY
2 YEAR ARI**

Railway Estate/South Townsville

FIGURE D28.4

Legend

Critical Duration

- 1 h
- 1.5 h
- 2 h
- 3 h
- 6 h
- 12 h
- 18 h
- 24 h
- 72 h



SCALE: 1:10,000 @A3

100 50 0 100 200 300 Meters

DISCLAIMER
The information shown on this map has been produced from the Townsville City Council's digital database. There is no warranty implied or expressed regarding the accuracy or completeness of the data. The data has been compiled for information and convenience only, and it is the responsibility of the user to verify all information before placing reliance on it. For accurate service locations please contact the Customer Services Centre on 1300 878 001.
This is not a legal document and is published for information and convenience only. The Townsville City Council takes no responsibility for any errors or omissions herein or for any acts that may occur due to its use.

Produced by:
INFRASTRUCTURE PLANNING
Strategic Planning
DATE: 04/03/2012
DATE PRINTED: 4/03/2013
DRAWN BY: WBB
DIGITAL FILE: RossCreek_FigD28.mxd
© Townsville City Council 2013



**ROSS CREEK
FLOOD STUDY
2 YEAR ARI**

Heatley/Vincent

FIGURE D28.5

Legend

Critical Duration

- 1 h
- 1.5 h
- 2 h
- 3 h
- 6 h
- 12 h
- 18 h
- 24 h
- 72 h

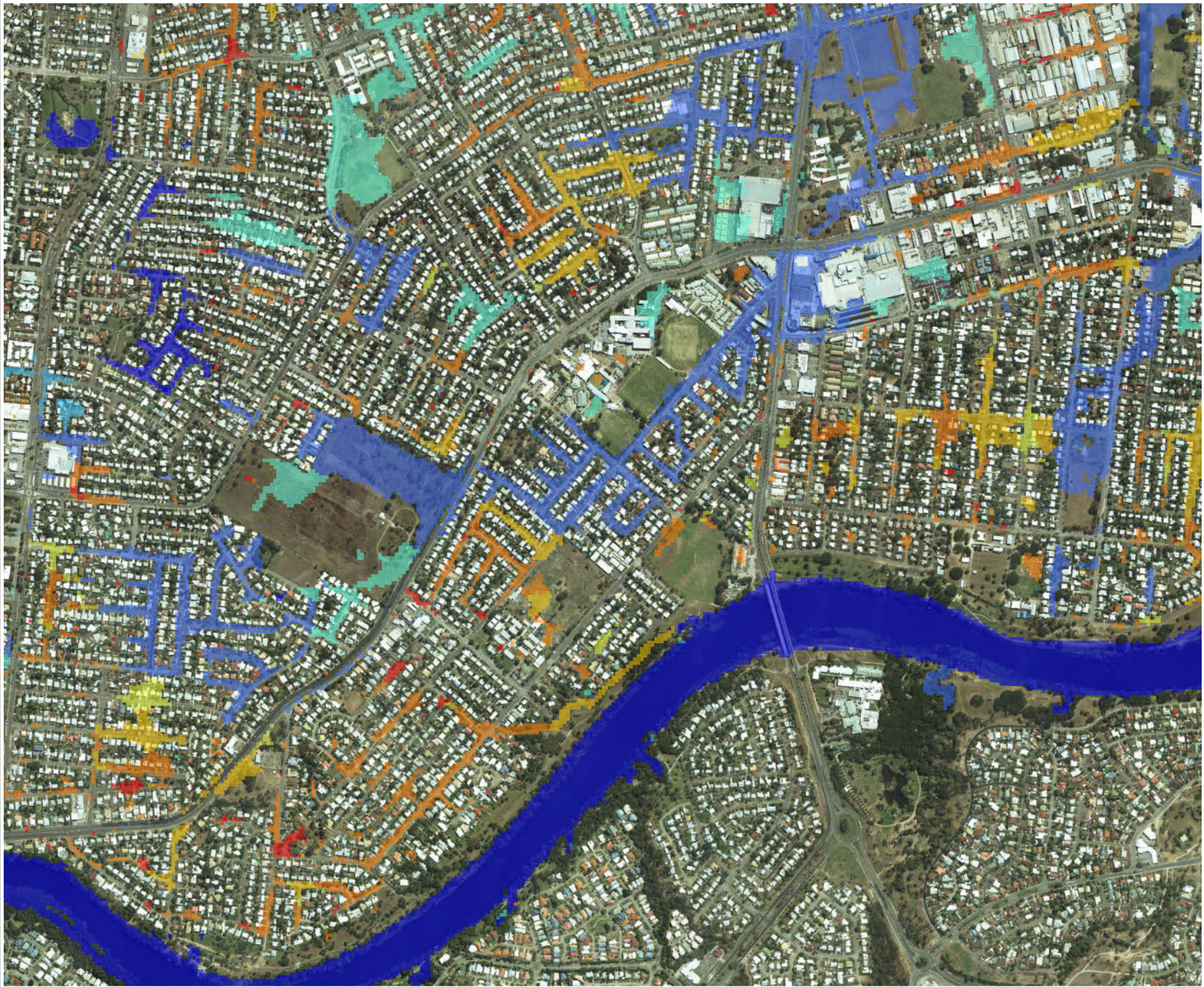


SCALE: 1:10,000 @A3

100 50 0 100 200 300 Meters

DISCLAIMER
The information shown on this map has been produced from the Townsville City Council's digital database. There is no warranty implied or expressed regarding the accuracy or completeness of the data. The data has been compiled for information and convenience only, and it is the responsibility of the user to verify all information before placing reliance on it. For accurate service locations please contact the Customer Services Centre on 1300 878 001.
This is not a legal document and is published for information and convenience only. The Townsville City Council takes no responsibility for any errors or omissions herein or for any acts that may occur due to its use.

Produced by:
INFRASTRUCTURE PLANNING
Strategic Planning
DATE: 04/03/2012
DATE PRINTED: 4/03/2013
DRAWN BY: WBB
DIGITAL FILE: RossCreek_FigD28.mxd
© Townsville City Council 2013



**ROSS CREEK
FLOOD STUDY
5 YEAR ARI**

Cranbrook

FIGURE D29.1

Legend

Critical Duration

- 1 h
- 1.5 h
- 2 h
- 3 h
- 6 h
- 12 h
- 18 h
- 24 h
- 72 h



SCALE: 1:10,000 @A3

100 50 0 100 200 300 Meters

DISCLAIMER
The information shown on this map has been produced from the Townsville City Council's digital database. There is no warranty implied or expressed regarding the accuracy or completeness of the data. The data has been compiled for information and convenience only, and it is the responsibility of the user to verify all information before placing reliance on it. For accurate service locations please contact the Customer Services Centre on 1300 878 001.
This is not a legal document and is published for information and convenience only. The Townsville City Council takes no responsibility for any errors or omissions herein or for any acts that may occur due to its use.

Produced by:
INFRASTRUCTURE PLANNING
Strategic Planning
DATE: 04/03/2012
DATE PRINTED: 4/03/2013
DRAWN BY: WBB
DIGITAL FILE: RossCreek_FigD29.mxd
© Townsville City Council 2013



**ROSS CREEK
FLOOD STUDY
5 YEAR ARI**

Aitkenvale/Mundingburra

FIGURE D29.2

Legend

Critical Duration

- 1 h
- 1.5 h
- 2 h
- 3 h
- 6 h
- 12 h
- 18 h
- 24 h
- 72 h



SCALE: 1:10,000 @A3

100 50 0 100 200 300 Meters

DISCLAIMER
The information shown on this map has been produced from the Townsville City Council's digital database. There is no warranty implied or expressed regarding the accuracy or completeness of the data. The data has been compiled for information and convenience only, and it is the responsibility of the user to verify all information before placing reliance on it. For accurate service locations please contact the Customer Services Centre on 1300 878 001.
This is not a legal document and is published for information and convenience only. The Townsville City Council takes no responsibility for any errors or omissions herein or for any acts that may occur due to its use.

Produced by:
INFRASTRUCTURE PLANNING
Strategic Planning
DATE: 04/03/2012
DATE PRINTED: 4/03/2013
DRAWN BY: WBB
DIGITAL FILE: RossCreek_FigD29.mxd
© Townsville City Council 2013



**ROSS CREEK
FLOOD STUDY
5 YEAR ARI**

Rosslea/Mysterton/Hermit Park

FIGURE D29.3

Legend

Critical Duration

- 1 h
- 1.5 h
- 2 h
- 3 h
- 6 h
- 12 h
- 18 h
- 24 h
- 72 h



SCALE: 1:10,000 @A3

100 50 0 100 200 300 Meters

DISCLAIMER
The information shown on this map has been produced from the Townsville City Council's digital database. There is no warranty implied or expressed regarding the accuracy or completeness of the data. The data has been compiled for information and convenience only, and it is the responsibility of the user to verify all information before placing reliance on it. For accurate service locations please contact the Customer Services Centre on 1300 878 001.
This is not a legal document and is published for information and convenience only. The Townsville City Council takes no responsibility for any errors or omissions herein or for any acts that may occur due to its use.

Produced by:
INFRASTRUCTURE PLANNING
Strategic Planning
DATE: 04/03/2012
DATE PRINTED: 4/03/2013
DRAWN BY: WBB
DIGITAL FILE: RossCreek_FigD29.mxd
© Townsville City Council 2013



**ROSS CREEK
FLOOD STUDY
5 YEAR ARI**

Railway Estate/South Townsville

FIGURE D29.4

Legend

Critical Duration

- 1 h
- 1.5 h
- 2 h
- 3 h
- 6 h
- 12 h
- 18 h
- 24 h
- 72 h

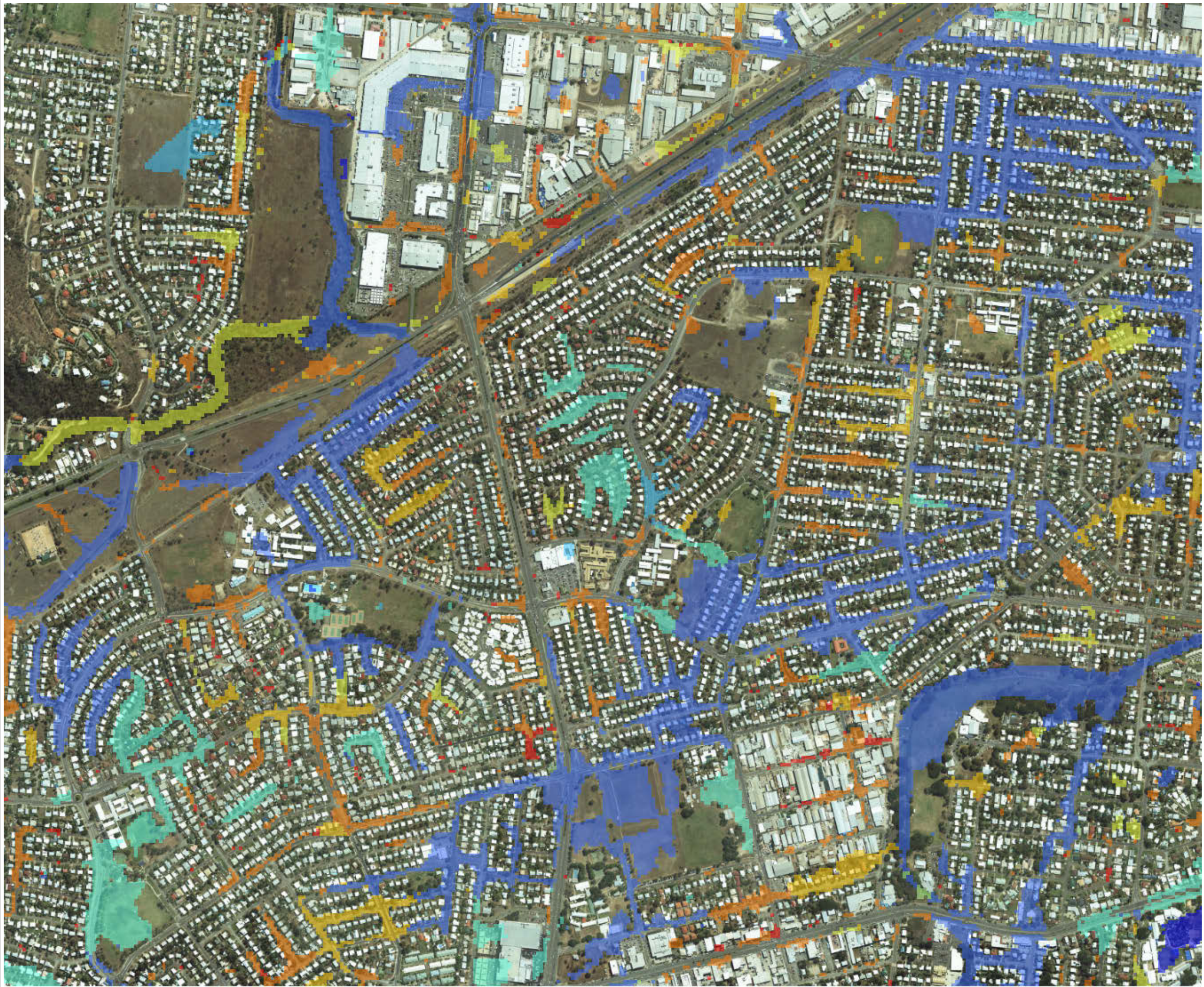


SCALE: 1:10,000 @A3

100 50 0 100 200 300 Meters

DISCLAIMER
The information shown on this map has been produced from the Townsville City Council's digital database. There is no warranty implied or expressed regarding the accuracy or completeness of the data. The data has been compiled for information and convenience only, and it is the responsibility of the user to verify all information before placing reliance on it. For accurate service locations please contact the Customer Services Centre on 1300 878 001.
This is not a legal document and is published for information and convenience only. The Townsville City Council takes no responsibility for any errors or omissions herein or for any acts that may occur due to its use.

Produced by:
INFRASTRUCTURE PLANNING
Strategic Planning
DATE: 04/03/2012
DATE PRINTED: 4/03/2013
DRAWN BY: WBB
DIGITAL FILE: RossCreek_FigD29.mxd
© Townsville City Council 2013



**ROSS CREEK
FLOOD STUDY
5 YEAR ARI**

Heatley/Vincent

FIGURE D29.5

Legend

Critical Duration

- 1 h
- 1.5 h
- 2 h
- 3 h
- 6 h
- 12 h
- 18 h
- 24 h
- 72 h



SCALE: 1:10,000 @A3

100 50 0 100 200 300 Meters

DISCLAIMER
The information shown on this map has been produced from the Townsville City Council's digital database. There is no warranty implied or expressed regarding the accuracy or completeness of the data. The data has been compiled for information and convenience only, and it is the responsibility of the user to verify all information before placing reliance on it. For accurate service locations please contact the Customer Services Centre on 1300 878 001.
This is not a legal document and is published for information and convenience only. The Townsville City Council takes no responsibility for any errors or omissions herein or for any acts that may occur due to its use.

Produced by:
INFRASTRUCTURE PLANNING
Strategic Planning
DATE: 04/03/2012
DATE PRINTED: 4/03/2013
DRAWN BY: WBB
DIGITAL FILE: RossCreek_FigD29.mxd
© Townsville City Council 2013



**ROSS CREEK
FLOOD STUDY
5 YEAR ARI**

Gulliver/Currajong/Pimlico

FIGURE D29.6

Legend

Critical Duration

- 1 h
- 1.5 h
- 2 h
- 3 h
- 6 h
- 12 h
- 18 h
- 24 h
- 72 h



SCALE: 1:10,000 @A3

100 50 0 100 200 300 Meters

DISCLAIMER
The information shown on this map has been produced from the Townsville City Council's digital database. There is no warranty implied or expressed regarding the accuracy or completeness of the data. The data has been compiled for information and convenience only, and it is the responsibility of the user to verify all information before placing reliance on it. For accurate service locations please contact the Customer Services Centre on 1300 878 001.
This is not a legal document and is published for information and convenience only. The Townsville City Council takes no responsibility for any errors or omissions herein or for any acts that may occur due to its use.

Produced by:
INFRASTRUCTURE PLANNING
Strategic Planning
DATE: 04/03/2012
DATE PRINTED: 4/03/2013
DRAWN BY: WBB
DIGITAL FILE: RossCreek_FigD29.mxd
© Townsville City Council 2013



**ROSS CREEK
FLOOD STUDY
5 YEAR ARI**

West End/Hyde Park

FIGURE D29.7

Legend

Critical Duration

- 1 h
- 1.5 h
- 2 h
- 3 h
- 6 h
- 12 h
- 18 h
- 24 h
- 72 h



SCALE: 1:10,000 @A3

100 50 0 100 200 300 Meters

DISCLAIMER
The information shown on this map has been produced from the Townsville City Council's digital database. There is no warranty implied or expressed regarding the accuracy or completeness of the data. The data has been compiled for information and convenience only, and it is the responsibility of the user to verify all information before placing reliance on it. For accurate service locations please contact the Customer Services Centre on 1300 878 001.
This is not a legal document and is published for information and convenience only. The Townsville City Council takes no responsibility for any errors or omissions herein or for any acts that may occur due to its use.

Produced by:
INFRASTRUCTURE PLANNING
Strategic Planning
DATE: 04/03/2012
DATE PRINTED: 4/03/2013
DRAWN BY: WBB
DIGITAL FILE: RossCreek_FigD29.mxd
© Townsville City Council 2013



**ROSS CREEK
FLOOD STUDY
5 YEAR ARI**

City/South Townsville

FIGURE D29.8

Legend

Critical Duration

- 1 h
- 1.5 h
- 2 h
- 3 h
- 6 h
- 12 h
- 18 h
- 24 h
- 72 h

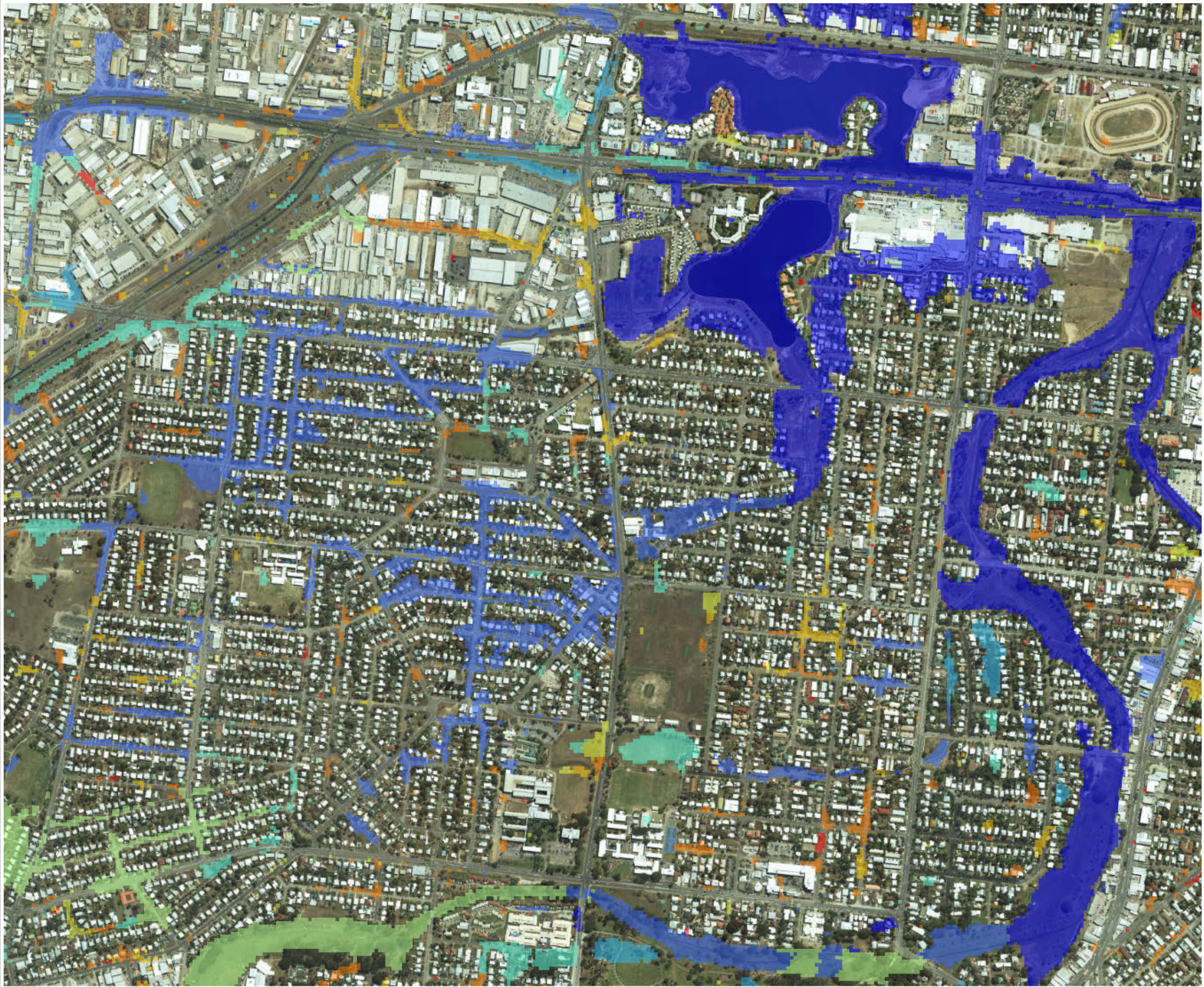


SCALE: 1:10,000 @A3

100 50 0 100 200 300 Meters

DISCLAIMER
The information shown on this map has been produced from the Townsville City Council's digital database. There is no warranty implied or expressed regarding the accuracy or completeness of the data. The data has been compiled for information and convenience only, and it is the responsibility of the user to verify all information before placing reliance on it. For accurate service locations please contact the Customer Services Centre on 1300 878 001.
This is not a legal document and is published for information and convenience only. The Townsville City Council takes no responsibility for any errors or omissions herein or for any acts that may occur due to its use.

Produced by:
INFRASTRUCTURE PLANNING
Strategic Planning
DATE: 04/03/2012
DATE PRINTED: 4/03/2013
DRAWN BY: WBB
DIGITAL FILE: RossCreek_FigD29.mxd
© Townsville City Council 2013



**ROSS CREEK
FLOOD STUDY
2 YEAR ARI**

Gulliver/Currajong/Pimlico

FIGURE D28.6

Legend

Critical Duration

- 1 h
- 1.5 h
- 2 h
- 3 h
- 6 h
- 12 h
- 18 h
- 24 h
- 72 h

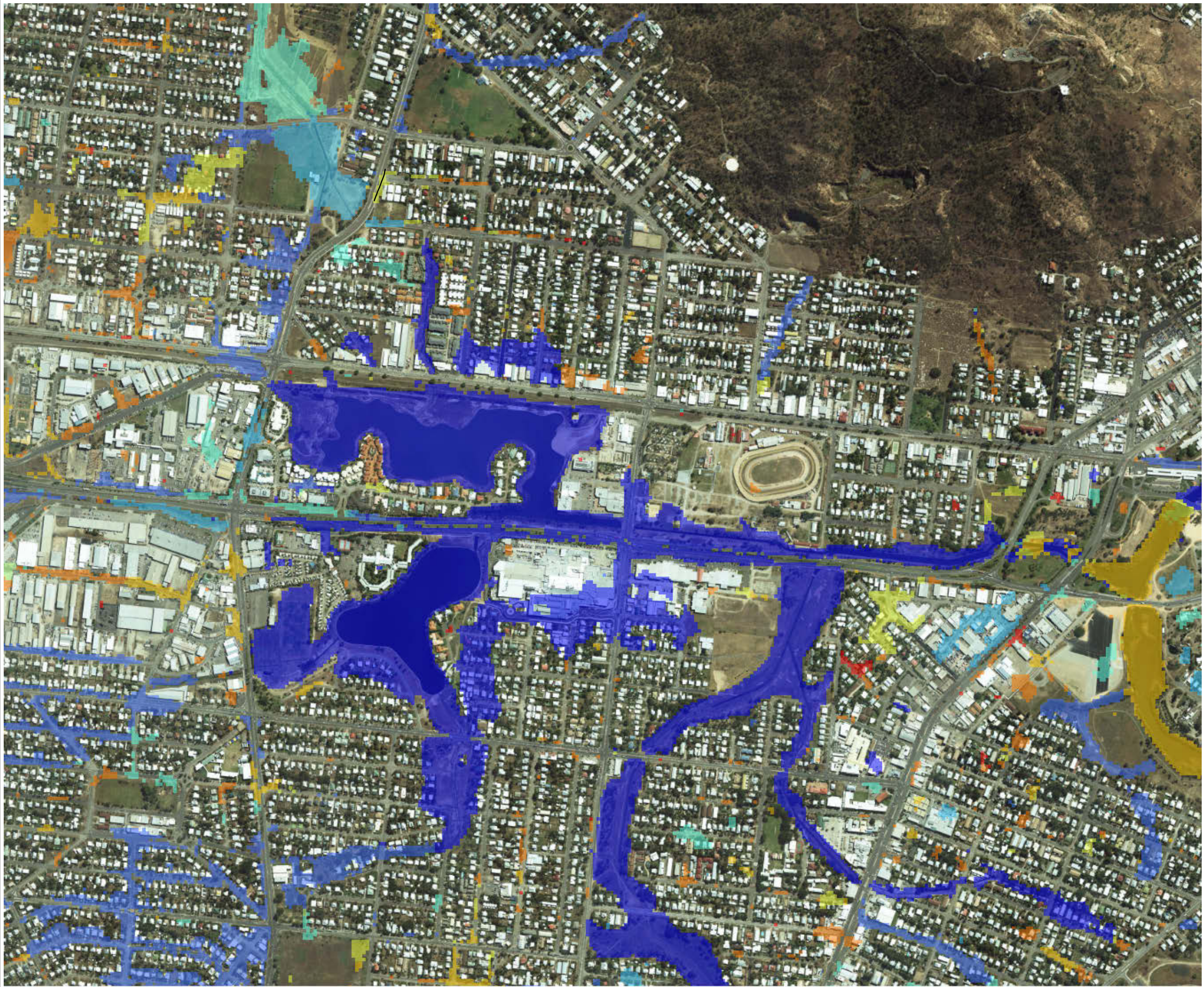


SCALE: 1:10,000 @A3

100 50 0 100 200 300 Meters

DISCLAIMER
The information shown on this map has been produced from the Townsville City Council's digital database. There is no warranty implied or expressed regarding the accuracy or completeness of the data. The data has been compiled for information and convenience only, and it is the responsibility of the user to verify all information before placing reliance on it. For accurate service locations please contact the Customer Services Centre on 1300 878 001.
This is not a legal document and is published for information and convenience only. The Townsville City Council takes no responsibility for any errors or omissions herein or for any acts that may occur due to its use.

Produced by:
INFRASTRUCTURE PLANNING
Strategic Planning
DATE: 04/03/2012
DATE PRINTED: 4/03/2013
DRAWN BY: WBB
DIGITAL FILE: RossCreek_FigD28.mxd
© Townsville City Council 2013



**ROSS CREEK
FLOOD STUDY
2 YEAR ARI**

West End/Hyde Park

FIGURE D28.7

Legend

Critical Duration

- 1 h
- 1.5 h
- 2 h
- 3 h
- 6 h
- 12 h
- 18 h
- 24 h
- 72 h



SCALE: 1:10,000 @A3

100 50 0 100 200 300 Meters

DISCLAIMER
The information shown on this map has been produced from the Townsville City Council's digital database. There is no warranty implied or expressed regarding the accuracy or completeness of the data. The data has been compiled for information and convenience only, and it is the responsibility of the user to verify all information before placing reliance on it. For accurate service locations please contact the Customer Services Centre on 1300 878 001.
This is not a legal document and is published for information and convenience only. The Townsville City Council takes no responsibility for any errors or omissions herein or for any acts that may occur due to its use.

Produced by:
INFRASTRUCTURE PLANNING
Strategic Planning
DATE: 04/03/2012
DATE PRINTED: 4/03/2013
DRAWN BY: WBB
DIGITAL FILE: RossCreek_FigD28.mxd
© Townsville City Council 2013



**ROSS CREEK
FLOOD STUDY
2 YEAR ARI**

City/South Townsville

FIGURE D28.8

Legend

Critical Duration

- 1 h
- 1.5 h
- 2 h
- 3 h
- 6 h
- 12 h
- 18 h
- 24 h
- 72 h

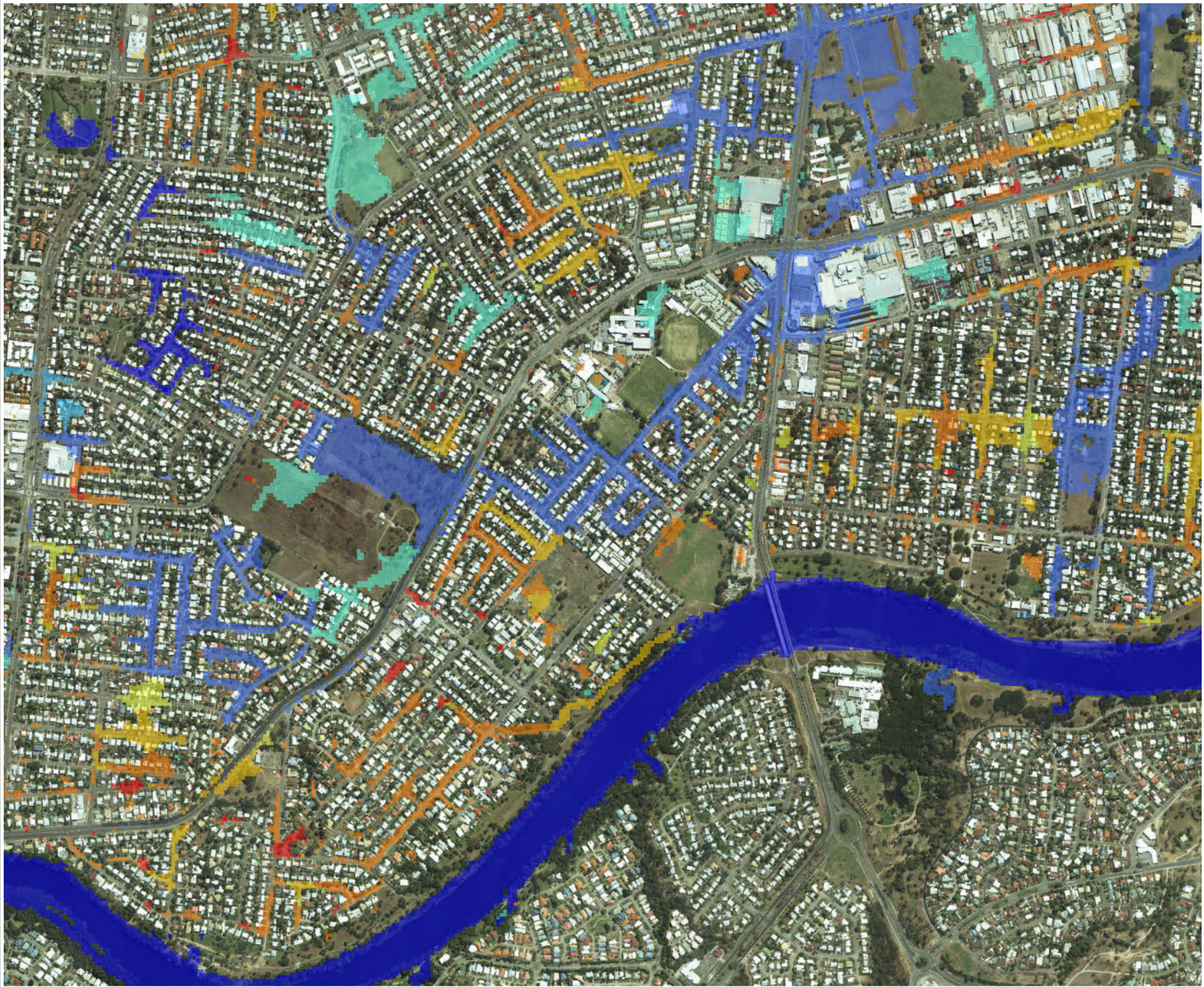


SCALE: 1:10,000 @A3

100 50 0 100 200 300 Meters

DISCLAIMER
The information shown on this map has been produced from the Townsville City Council's digital database. There is no warranty implied or expressed regarding the accuracy or completeness of the data. The data has been compiled for information and convenience only, and it is the responsibility of the user to verify all information before placing reliance on it. For accurate service locations please contact the Customer Services Centre on 1300 878 001.
This is not a legal document and is published for information and convenience only. The Townsville City Council takes no responsibility for any errors or omissions herein or for any acts that may occur due to its use.

Produced by:
INFRASTRUCTURE PLANNING
Strategic Planning
DATE: 04/03/2012
DATE PRINTED: 4/03/2013
DRAWN BY: WBB
DIGITAL FILE: RossCreek_FigD28.mxd
© Townsville City Council 2013



**ROSS CREEK
FLOOD STUDY
5 YEAR ARI**

Cranbrook

FIGURE D29.1

Legend

Critical Duration

- 1 h
- 1.5 h
- 2 h
- 3 h
- 6 h
- 12 h
- 18 h
- 24 h
- 72 h



SCALE: 1:10,000 @A3

100 50 0 100 200 300 Meters

DISCLAIMER
The information shown on this map has been produced from the Townsville City Council's digital database. There is no warranty implied or expressed regarding the accuracy or completeness of the data. The data has been compiled for information and convenience only, and it is the responsibility of the user to verify all information before placing reliance on it. For accurate service locations please contact the Customer Services Centre on 1300 878 001.
This is not a legal document and is published for information and convenience only. The Townsville City Council takes no responsibility for any errors or omissions herein or for any acts that may occur due to its use.

Produced by:
INFRASTRUCTURE PLANNING
Strategic Planning
DATE: 04/03/2012
DATE PRINTED: 4/03/2013
DRAWN BY: WBB
DIGITAL FILE: RossCreek_FigD29.mxd
© Townsville City Council 2013



**ROSS CREEK
FLOOD STUDY
5 YEAR ARI**

Aitkenvale/Mundingburra

FIGURE D29.2

Legend

Critical Duration

- 1 h
- 1.5 h
- 2 h
- 3 h
- 6 h
- 12 h
- 18 h
- 24 h
- 72 h



SCALE: 1:10,000 @A3

100 50 0 100 200 300 Meters

DISCLAIMER
The information shown on this map has been produced from the Townsville City Council's digital database. There is no warranty implied or expressed regarding the accuracy or completeness of the data. The data has been compiled for information and convenience only, and it is the responsibility of the user to verify all information before placing reliance on it. For accurate service locations please contact the Customer Services Centre on 1300 878 001.
This is not a legal document and is published for information and convenience only. The Townsville City Council takes no responsibility for any errors or omissions herein or for any acts that may occur due to its use.

Produced by:
INFRASTRUCTURE PLANNING
Strategic Planning
DATE: 04/03/2012
DATE PRINTED: 4/03/2013
DRAWN BY: WBB
DIGITAL FILE: RossCreek_FigD29.mxd
© Townsville City Council 2013



**ROSS CREEK
FLOOD STUDY
5 YEAR ARI**

Rosslea/Mysterton/Hermit Park

FIGURE D29.3

Legend

Critical Duration

- 1 h
- 1.5 h
- 2 h
- 3 h
- 6 h
- 12 h
- 18 h
- 24 h
- 72 h



SCALE: 1:10,000 @A3

100 50 0 100 200 300 Meters

DISCLAIMER
The information shown on this map has been produced from the Townsville City Council's digital database. There is no warranty implied or expressed regarding the accuracy or completeness of the data. The data has been compiled for information and convenience only, and it is the responsibility of the user to verify all information before placing reliance on it. For accurate service locations please contact the Customer Services Centre on 1300 878 001.
This is not a legal document and is published for information and convenience only. The Townsville City Council takes no responsibility for any errors or omissions herein or for any acts that may occur due to its use.

Produced by:
INFRASTRUCTURE PLANNING
Strategic Planning
DATE: 04/03/2012
DATE PRINTED: 4/03/2013
DRAWN BY: WBB
DIGITAL FILE: RossCreek_FigD29.mxd
© Townsville City Council 2013



**ROSS CREEK
FLOOD STUDY
5 YEAR ARI**

Railway Estate/South Townsville

FIGURE D29.4

Legend

Critical Duration

- 1 h
- 1.5 h
- 2 h
- 3 h
- 6 h
- 12 h
- 18 h
- 24 h
- 72 h

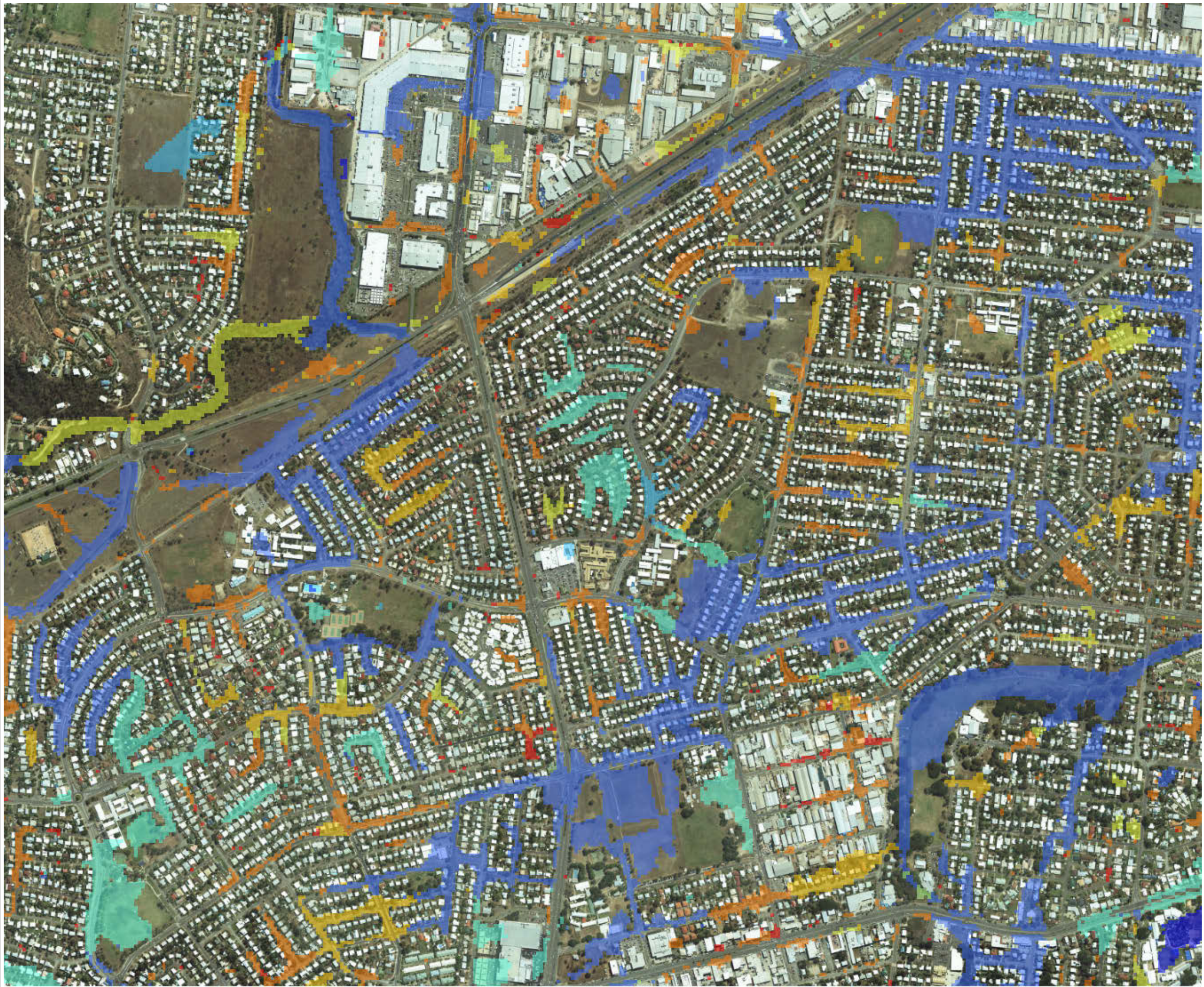


SCALE: 1:10,000 @A3

100 50 0 100 200 300 Meters

DISCLAIMER
The information shown on this map has been produced from the Townsville City Council's digital database. There is no warranty implied or expressed regarding the accuracy or completeness of the data. The data has been compiled for information and convenience only, and it is the responsibility of the user to verify all information before placing reliance on it. For accurate service locations please contact the Customer Services Centre on 1300 878 001.
This is not a legal document and is published for information and convenience only. The Townsville City Council takes no responsibility for any errors or omissions herein or for any acts that may occur due to its use.

Produced by:
INFRASTRUCTURE PLANNING
Strategic Planning
DATE: 04/03/2012
DATE PRINTED: 4/03/2013
DRAWN BY: WBB
DIGITAL FILE: RossCreek_FigD29.mxd
© Townsville City Council 2013



**ROSS CREEK
FLOOD STUDY
5 YEAR ARI**

Heatley/Vincent

FIGURE D29.5

Legend

Critical Duration

- 1 h
- 1.5 h
- 2 h
- 3 h
- 6 h
- 12 h
- 18 h
- 24 h
- 72 h



SCALE: 1:10,000 @A3

100 50 0 100 200 300 Meters

DISCLAIMER
The information shown on this map has been produced from the Townsville City Council's digital database. There is no warranty implied or expressed regarding the accuracy or completeness of the data. The data has been compiled for information and convenience only, and it is the responsibility of the user to verify all information before placing reliance on it. For accurate service locations please contact the Customer Services Centre on 1300 878 001.
This is not a legal document and is published for information and convenience only. The Townsville City Council takes no responsibility for any errors or omissions herein or for any acts that may occur due to its use.

Produced by:
INFRASTRUCTURE PLANNING
Strategic Planning
DATE: 04/03/2012
DATE PRINTED: 4/03/2013
DRAWN BY: WBB
DIGITAL FILE: RossCreek_FigD29.mxd
© Townsville City Council 2013