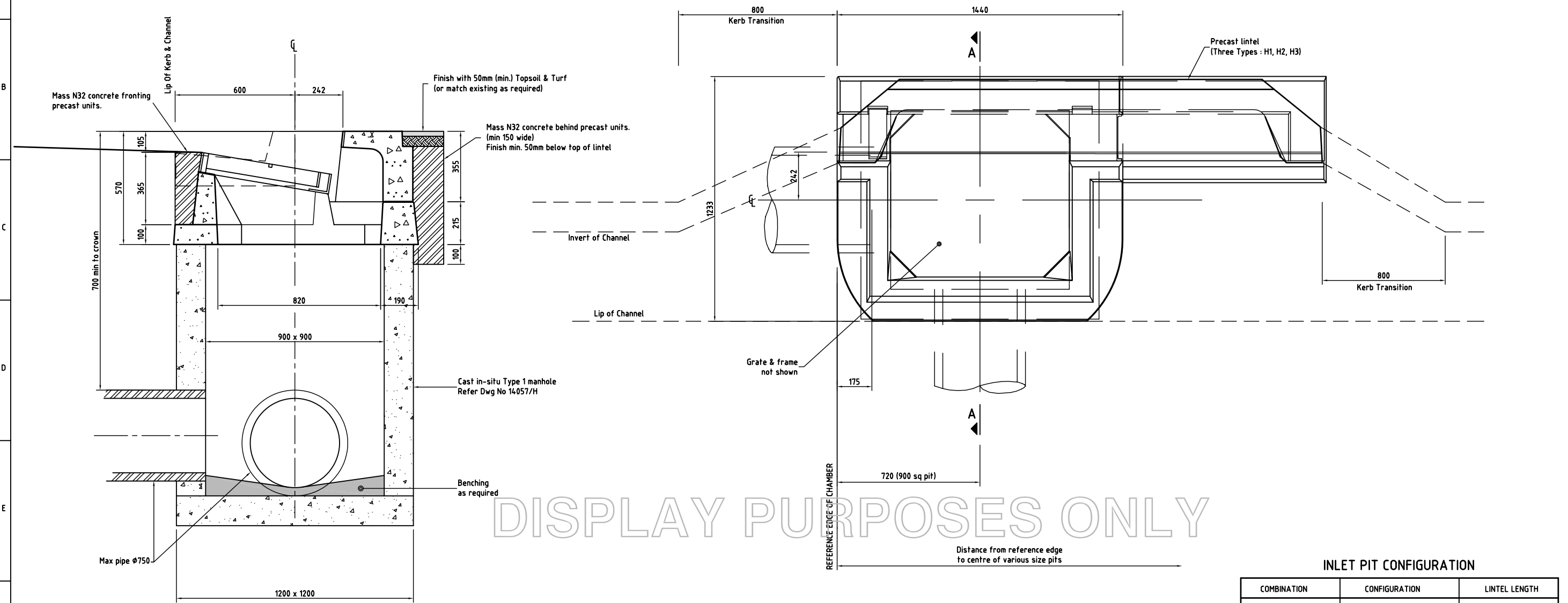


ALL PRECAST LINTELS SHALL BE PRE-STAMPED WITH THE MESSAGE "NO WASTE - FLOWS TO CREEK OR REEF".
ORIENTATION OF MESSAGE IS SUCH THAT IT SHALL BE VIEWED FROM THE ROADWAY.



DISPLAY PURPOSES ONLY

SECTION A - A

PLAN VIEW

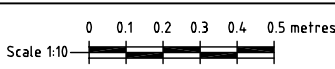
NOTE:
1. KERB TRANSITIONS SHALL CONFORM TO THE RELEVANT LOCAL AUTHORITIES STANDARDS & SPECIFICATIONS.

INLET PIT CONFIGURATION

COMBINATION	CONFIGURATION	LINTEL LENGTH
'COMBO 1' - 1C1T		'H1' - 2460mm
'COMBO 2' - 1C1T		
'COMBO 3' - 1C1T		
'COMBO 4' - 1C2T		'H2' - 3550mm
'COMBO 5' - 1C2T		
'COMBO 6' - 1C2T		
'COMBO 7' - 1C3T		'H3' - 4640mm

ZONE	REF.	REVISIONS	BY	CKD.	DATE
B		Chamber changed to standard Type 1	GRP		10/02

COMMERCIAL - IN CONFIDENCE
The information contained herein is confidential to Amatek Limited, A.C.N. 000 032 191 ("Amatek") and Amatek is the proprietor of the copyright in the drawings. The information and drawings are not generally available. As unauthorised disclosure, reproduction or use of the information and drawings may cause Amatek irreparable harm, Amatek will take all steps necessary to prevent and/or prosecute any unauthorised disclosure, reproduction or use of the information and drawings. ©
Adopted 18th May 1999



ASSOCIATED DRAWINGS	
LEVEL DATUM	CAD INDEX NO.
A.H.D.	623
ERGON	TELSTRA

CITIWORKS
TOWNSVILLE

APPROVED

original signed by R. Plant 7/11/02
MANAGER - CITIWORKS

original signed by K. Palmer 7/11/02
OPERATIONS ENGINEER

DRAINAGE STANDARD DETAILS
PRE-CAST KERB INLET SYSTEM
FOR 900x900 CAST IN-SITU
PRECAST STORMWATER PIT

DES.	-	DATE	M/FILM	SCALE	DRAWING NO.
DRN.	DWW	June '99		as shown	50822 B

A1