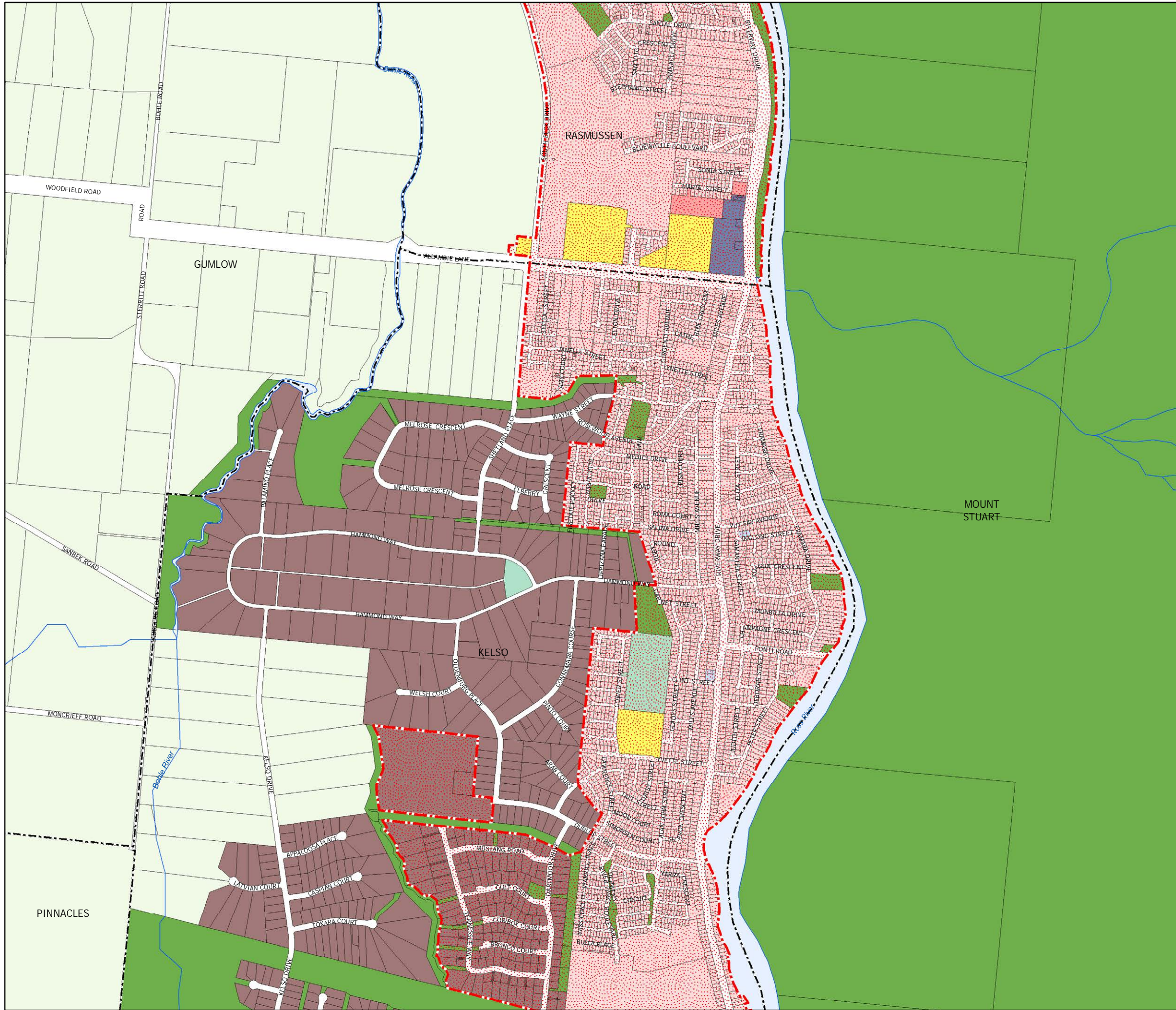




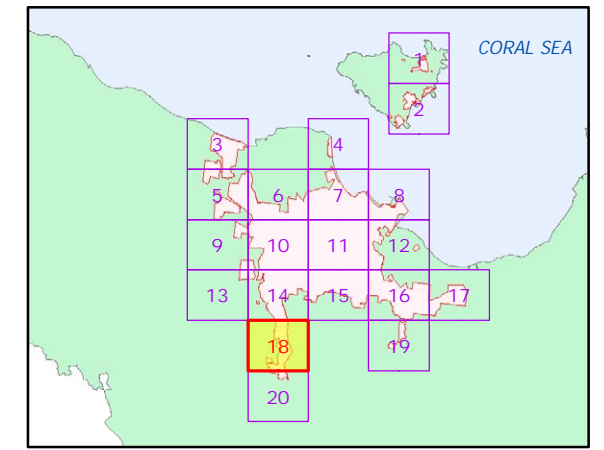
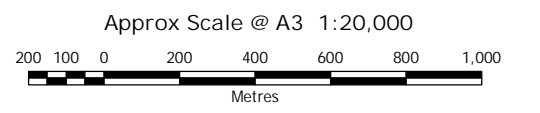
# Townsville City Council Priority Infrastructure Area Map



- Priority infrastructure**
- Priority Infrastructure Area
- Residential zones category**
- Low density residential
  - Medium density residential
  - High density residential
  - Rural residential
  - Character residential
- Centre zones category**
- Neighbourhood centre
  - Local centre
  - District centre
  - Major centre
  - Principal centre (CBD)
  - Specialised centre
  - Mixed use
- Community facilities and open space zones category**
- Sport and recreation
  - Open space
  - Community facilities
  - Environmental management and conservation
- Industry zones category**
- Low impact industry
  - Medium impact industry
  - High impact industry
- Rural zones category**
- Rural
- Other zones category**
- Emerging community
  - Special purpose
- Cadastre**
- Local government boundary
  - Suburb
  - DCDB TCC
  - Waterway or waterbody

While every care is taken to ensure the accuracy of this product, Townsville City Council makes no representations or warranties about the accuracy, reliability, completeness or suitability for any particular purpose and disclaims all responsibility and all liability (including without limitation, liability in negligence) for all expenses, losses, damages (including indirect or consequential damage) and costs you may incur as a result of the product being inaccurate or incomplete in any way or for any reason.

© Copyright Townsville City Council, October 2014  
Gazettal Date: 17/10/2014  
QPP Version: 3.1  
Geocentric Datum of Australia 1994 (GDA94)



Priority Infrastructure Area Map 018