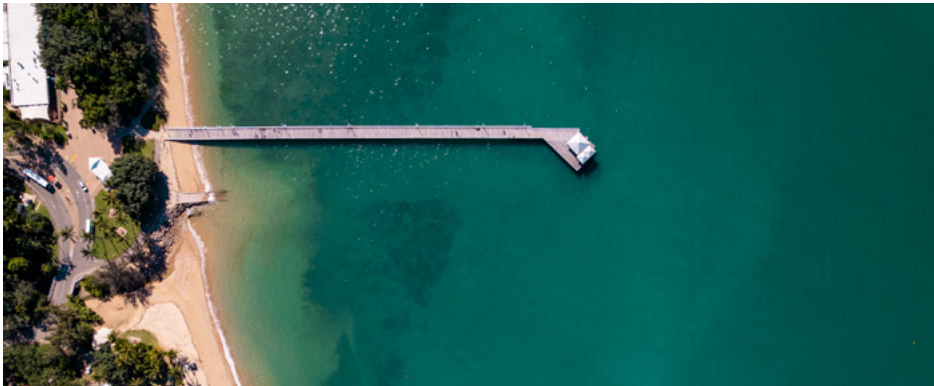


MAGNETIC ISLAND: INVESTING IN A SUSTAINABLE FUTURE

Issue 2, May 2025



Over the coming months, Townsville City Council will be prioritising work to restore Island infrastructure damaged in the recent severe weather events. Planning is now underway for a new Gustav Creek bridge structure and the repair of roads, drainage and pavements across the Island. To allow this work to happen, planned maintenance dredging at Nelly Bay will be deferred. Read more about these and other important Council projects below.



Maintenance Dredging at Nelly Bay Harbour

With Council's focus firmly on the restoration of bridge and road infrastructure in the Nelly Bay area, maintenance dredging work is being deferred. At our community information session in March, we heard a number of concerns, including about the impact on damaged local roads including Kelly Street.

In response to this, and with the funding secured for the Sooning Street bridge structure, Council will now carry out repair and restoration of bridge and roads before starting dredging operations. Dredging is now likely to start early next year.

We've also developed a more detailed question-and-answer document (available on Council's website) that addresses many of the questions and concerns raised during the session. Over the coming months, we will continue to refine our plans to ensure that all concerns have been addressed.



DRFA Road Inspections and Reconstruction

Council has scheduled a boost to the restoration of the Island's Road network to commence **after Easter**, with BMD Constructions assisting Council crews in restoring a wide range of road and drainage assets.

Magnetic Island had some of the highest rainfall between December and April, severely impacting the road, drainage, coastal and recreational infrastructure. While Island-based crews have been working to deal with a saturated road network, we anticipate being able to complete more permanent restoration works once the sub-surface water flow dries.

As part of these works, we will repair sections of pavement across the Island, grade unsealed roads, fill washouts and replace gravel in some areas where needed once conditions dry out.

During this time, Council will also perform drainage repairs and erosion restoration works across the Island. The dates and timing of these works will be available shortly.¹

Gustav Creek Structure Restoration Work

Progress on the project is going well, with all demolition materials removed from the Island.

Council is developing a detailed design for the replacement structure in collaboration with the Queensland Government's Queensland Reconstruction Authority (QRA). Having received QRA approval, Council has started planning the project's delivery schedule, ensuring that materials arrive on time and as expected.

Preparation of the site and preliminary earthworks will begin in anticipation of the upcoming large-scale construction activities. The design includes a 38-metre, two-span bridge, allowing the existing concrete apron on the southern side of Sooning Street and the concrete causeway on the northern side of Gustav Creek to remain intact. Additionally, Council will preserve the existing retaining wall at the entrance to Gustav Canal and Nelly Bay Harbour.

The design also includes the retention of the existing standalone pedestrian footbridge and the construction of a 1.5-metre-wide plain concrete pathway along the northern side of Gustav Creek. This pathway will enhance connectivity between the Magnetic Island Health Service Centre and Magnetic Island State School, improving accessibility to the area and its surroundings.

The design is available for download from the project page. Council will continue to provide updates as they become available.¹





Henry Lawson Pedestrian Bridge

Work to relocate the existing services on the bridge was completed on **Friday 18 April 2025**. Council has connected and commissioned the new services, reinstated the existing footpath and carpark and repaired a damaged water valve cover near the entrance to the shop carpark on Pacific Drive.



Horseshoe Bay and Nelly Bay Coastal Management Recovery Works

Coastal management works along the Nelly Bay and Horseshoe Bay foreshore are now complete.

These works have protected coastal vegetation, reinforced vulnerable sections of the foreshore for improved coastal stability, and restored beach amenities and public access.

These efforts have also helped reduce the impact of coastal erosion, supported beach recovery, protected Council assets and residential properties near the foreshore, and enhanced the beach's resilience against future weather events.¹



Picnic Bay Reservoir Roof Replacement

Demolition works were slowed down with the wet season's rainfall, however now completed with the old reservoir roof and associated infrastructure removed and demolished. A crane was used onsite to remove materials and Ergon temporarily disconnected the nearby power lines to ensure a safe work area.

Construction will continue with installation of new footings to support the new roof. Works are scheduled to be completed in August 2025, weather and project conditions permitting.

Wastewater Recycling Facility Environmental Site Investigation

Environmental site investigations at the Magnetic Island Wastewater Recycling (MIWR) facility are complete.

As a result, a local contractor, AECOM, has provided three reports to Council for review as part of the project's Development Assessment application. As part of the environmental approval process, Council will submit these reports to the State Assessment and Referral Agency.

These investigations are in preparation for the commencement of the **Magnetic Island Recycled Water Irrigation Upgrade** project. This upgrade will include the installation of a megalitre storage tank for recycled water at the MIWR.

Council will keep the community updated as this project progresses.

Picnic Bay Public Amenities Renewal

The demolition of the previous toilet blocks has been completed and the building pad for the new amenity block was established. The recent wet weather has delayed footing construction while the building pad dries out.

As part of the project, two palm trees were removed and to compensate for this, Council has installed four new palm trees on the Picnic Bay foreshore near the existing shelter.

The temporary public amenities will remain during the construction period and will be removed once the new facilities are built. The works will not impact the bus stop. The playground may be affected at times and Council will provide further updates when this occurs.

Due to delays caused by wet weather, the project is scheduled to be completed in July 2025, weather and project conditions permitting.²



CONTACT US

City Projects

- 103 Walker Street, Townsville City
- PO Box 1268, Townsville QLD 4810
- 13 48 10
- cityprojects@townsville.qld.gov.au
- townsville.qld.gov.au



READ MORE

SCAN CODE OR VISIT [TOWNSVILLE.QLD.GOV.AU](https://townsville.qld.gov.au)
MAGNETIC ISLAND PROJECTS

SIGN UP TO E-NEWS

SUBSCRIBE TO E-NEWS TO STAY UP-TO-DATE
WITH PROJECTS ON MAGNETIC ISLAND

Townsville City Council advises that all content is correct at time of printing.
All information is subject to change without notice. Townsville City Council © 2025.

1. Assistance provided through the jointly funded Commonwealth-state Disaster Recovery Funding Arrangements (DRFA).
2. This project is proudly funded by the Queensland Government's Works for Queensland program.