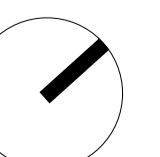


1. AXONOMETRIC VIEW



2. PRELIMINARY RENDERS



# KEY PRINCIPALS

- LIGHT** Sawtooth roof allows central rooms (first floor) a high-level window & light  
Plans feature maximum north openings
- COOLTH** Shade buildings with (low-maintenance) native planting  
Increase green space to reduce heat island effect  
Exposed concrete as thermal mass  
Plans allow cross-ventilation
- ROBUST & COST EFFECTIVE** Limit additional materials to reduce trades required and increase building longevity  
Simple materiality (concrete, FC sheet, strategic use of timber) to reduce cost
- WATER** Permeable surfaces to support drainage in tropical weather  
Opportunity for water collection for greenspace maintenance
- COMMUNITY WELL-BEING** Light, ventilated buildings  
Front patios allow greater connection  
Neighbourhood pride - strategic use of timber to elevate duplex appearance



shade & privacy

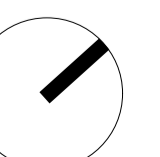


permeable



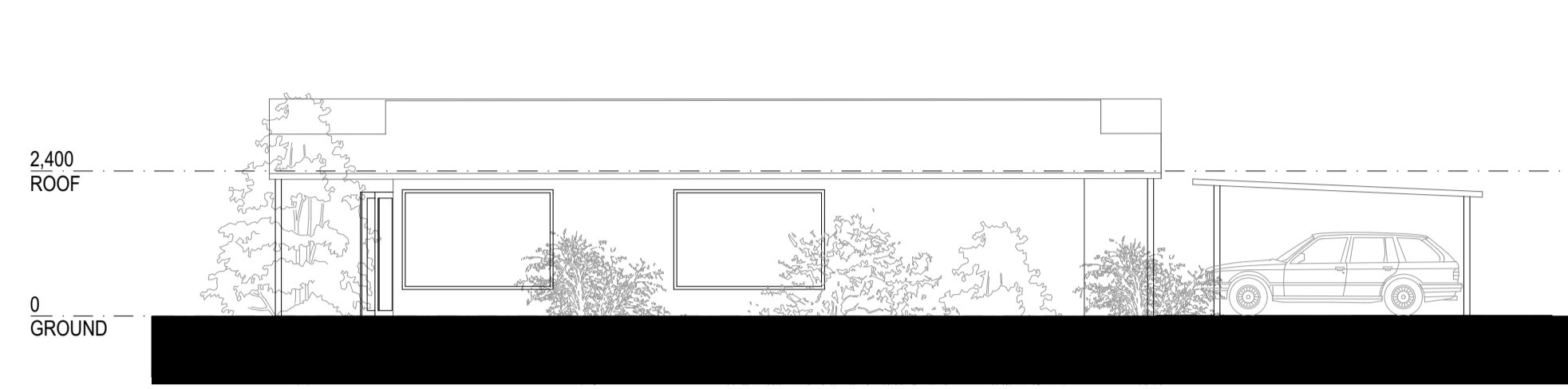
robust

elevated appearance

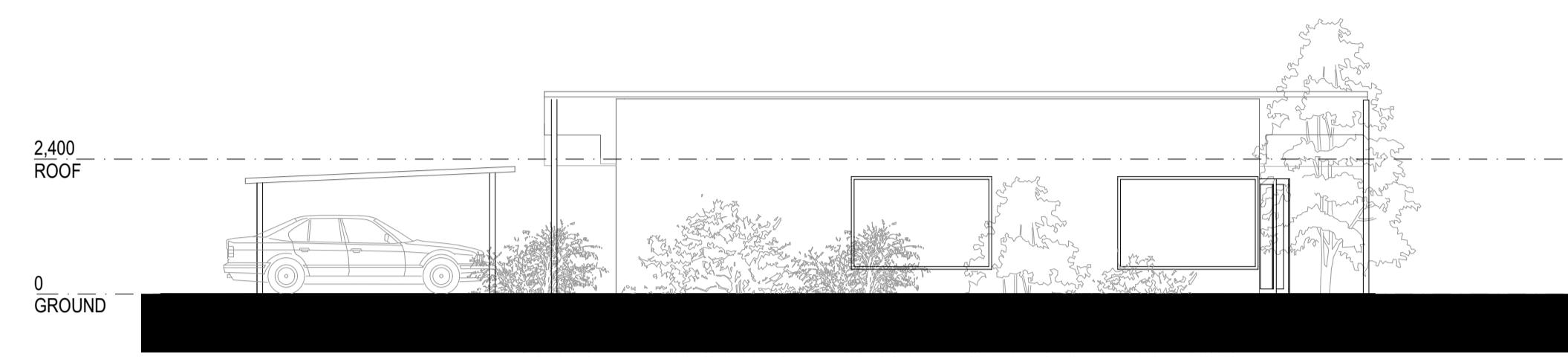




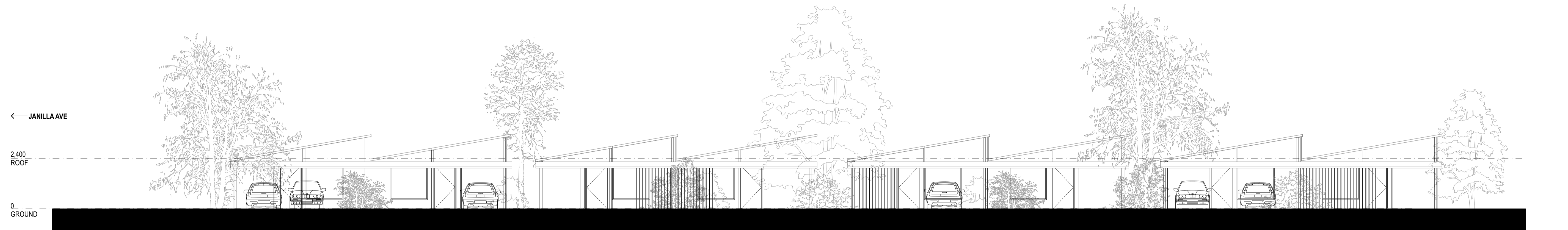




1. DUPLEX TYPE 1 - SOUTH ELEVATION  
1:100 @ A1



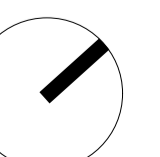
2. DUPLEX TYPE 1 - NORTH ELEVATION  
1:100 @ A1



3. DUPLEX TYPE 1 - EAST ELEVATION  
1:100 @ A1

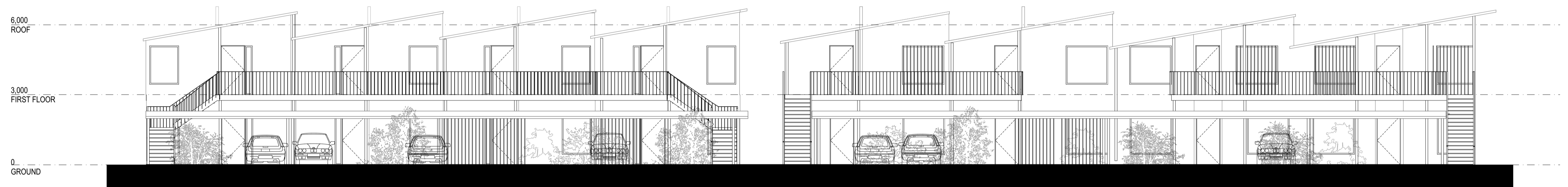


4. DUPLEX TYPE 1 - WEST ELEVATION  
1:100 @ A1

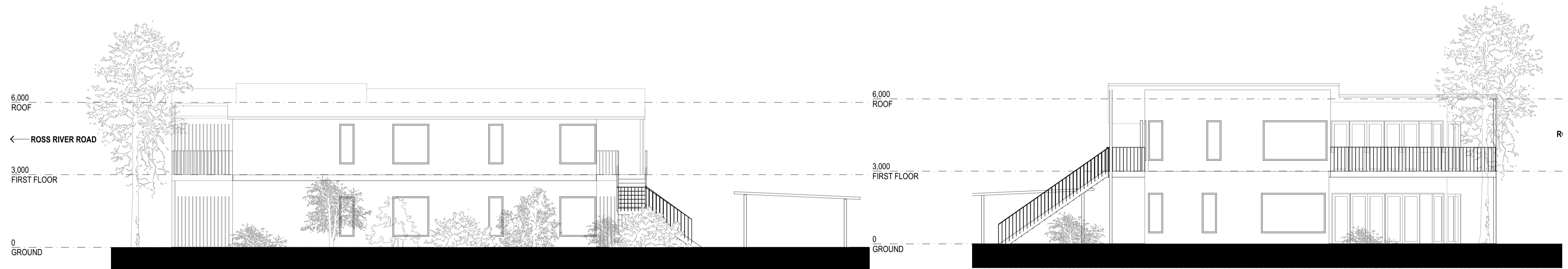




1. DUPLEX TYPE 2, 3, 4 NORTH ELEVATION  
1:100 @ A1



2. DUPLEX TYPE 2, 3, 4, SOUTH ELEVATION  
1:100 @ A1



3. DUPLEX TYPE 4, WEST ELEVATION  
1:100 @ A1

4. DUPLEX TYPE 4, EAST ELEVATION  
1:100 @ A1

