

MAGNETIC ISLAND: INVESTING IN A SUSTAINABLE FUTURE

Issue 9, July 2026



Townsville City Council continues to make strong progress across Magnetic Island, with projects moving forward alongside the everyday work that keeps the Island clean, safe and welcoming.

This edition highlights key milestones across the Island, including the Sooning Street Bridge, road restoration works and new upgrades in Nelly Bay, and the ongoing efforts to protect the Island's natural environment.

Our Back to Basics approach continues to deliver the essential services the community relies on, while longer-term projects support liveability and prosperity.

Thank you for helping keep Magnetic Island a great place to live, work and visit.

\$20M Investment for Magnetic Island

Magnetic Island is set for a big year, with more than \$20 million committed in the 2026/27 Council budget to deliver 14 capital projects across the Island.

The budget focuses on renewing and upgrading essential infrastructure and sits alongside operational funding for services such as wastewater treatment, waste facilities, open spaces, lifeguards and Nelly Bay dredging.

Projects in the 2026/27 Capital Plan:

- Funding toward the completion of the Sooning Street Bridge (DRFA funding)
- Nelly Bay Road overlay and guardrail renewal – construction
- Nelly Bay Boardwalk renewal
- Nelly Bay Road slope assessment – design
- Horseshoe Bay Road slope remediation works (south) – construction
- Horseshoe Bay Road slope remediation works (north) – construction
- Kelly Street road reconstruction (DRFA funded)
- Henry Lawson Bridge renewal
- Bus stop at Pacific Drive, Horseshoe Bay
- Magnetic Island Golf Course irrigation upgrade (Year 2 of 2)
- Horseshoe Bay Treatment Plant works and Bolger Bay Pump Station upgrade

The 2026/27 budget is about keeping Magnetic Island moving, delivering the services the community relies on, the infrastructure needed for the future, and protecting the lifestyle locals value.

To learn more, visit townsville.qld.gov.au and search '[2026/27 Budget](#)'.

Back to Basics

Back to Basics Works Deliver Results on Magnetic Island

Council is taking a back to basics approach on Magnetic Island, with crews continuing to carry out the everyday services that help keep the Island clean, safe and welcoming for everyone.

This includes rubbish collection, BBQ cleaning, mowing, brush cutting, and clearing trees from pathways. Boat ramps and stormwater drains have also been cleaned to improve safety and help water flow during wet weather.

These works are supporting a busy time on the Island, including the June/July school holidays and the upcoming NTI Townsville 500 Supercars event.

The AFL oval was prepared ahead of the AFL Masters Carnival and the SeaLink Junior AFL Carnival, while planned hazard reduction burns along West Point Road in June were postponed due to weather. A new burn date will be shared with the community once confirmed.

These works are all part of Council's commitment to looking after the Island and keeping it in great shape for locals and visitors alike.





Help Protect Magnetic Island from Indian Myna Birds

Indian Myna birds are a growing problem on Magnetic Island, posing risks to the environment, native wildlife and community wellbeing.

As one of the world's top 100 worst invasive species, they evict native birds and possums from their habitats. They can spread avian diseases to native and domestic poultry and create noise and mess around homes. Because of these impacts, they are included in Council's Townsville City Biosecurity Plan 2025–2030, which outlines actions to manage their spread.

On Magnetic Island, the focus is full eradication, with an estimated 50 to 70 Indian Myna birds currently present. Islands provide a unique advantage for pest management because they have fewer entry points, making it easier to prevent the birds from returning once they are removed.

Council is working with the Magnetic Island Nature Care Association (MINCA) to protect the Island's natural environment. Trapping will continue until August, then shift to monitoring for any remaining birds.

Unfortunately, some trapping sites have been vandalised, and signage is being installed to help reduce further damage.

Residents can help by reporting sightings to Council or through MynaScan (feralscan.org.au/mynascan). Community support is key to removing these birds for good. To learn more, visit townsville.qld.gov.au and search 'Townsville City Biosecurity Plan 2025–2030'.

Henry Lawson Bridge Replacement Moves Ahead

Council has awarded the contract for the Henry Lawson Bridge Replacement to a local contractor and preliminary works are scheduled to get underway in late June with a design completed by mid-October. Council will continue to update the community as the project progresses and key milestones are reached. To learn more, visit townsville.qld.gov.au and search '[Henry Lawson Pedestrian Bridge Replacement](#)'.

Road Restoration Nears the Finish Line

Reinstatement of the unsealed road network following earlier wet weather events is nearing completion, with crews making steady progress across the Island. Council is currently working between Sooning Street and West Point Road as materials become available, bringing the network back to a reliable standard.

With works on track for completion in late June, residents can expect improved driving conditions across these areas. Council will continue to keep the community updated as the remaining works are finalised.¹

New Signage to Enhance Picnic Bay Pedestrian Mall

Council is preparing to install new signage at the Picnic Bay Pedestrian Mall in June, helping visitors and residents make the most of the space. The updated sign highlights available facilities, including accessible toilets, picnic areas, BBQs and the playground, making it easier to plan a visit.

The signage also provides important safety information on treating tropical marine stingers, along with clear guidance on authorised vehicle access. A new map has been included to support wayfinding, making it simpler for everyone to navigate and enjoy the area.



Signs at Council Sign Shop ready for installation.

Magnetic Island Recycled Water Irrigation Upgrade Now Underway

Work has officially commenced on the Magnetic Island Recycled Water Irrigation System Upgrade, marking a significant milestone for the project. Preliminary earthworks are now in progress, with the contractor beginning to stockpile fill material and prepare the site for construction of the new 1ML recycled water storage tank.

Preliminary irrigation and electrical investigation works have also started across key locations, including the Magnetic Island Transfer Station, the Magnetic Island Country Club, and the Picnic Bay Landfill. These investigations will help inform upcoming stages of the upgrade and ensure smooth delivery as construction progresses.

The project will deliver a new recycled water storage tank, upgraded monitoring and control systems, and refurbishment of existing irrigation infrastructure across the three locations. Council will continue to provide updates as works advance over the coming months.



Sooning Street Bridge Takes Shape Ahead of Opening Event

Works on the Sooning Street Bridge over Gustav Creek continue to progress, with construction milestones bringing the structure to life ahead of a planned late July opening. Completion of the fishway, abutments and deck beam placement means the site is now clearly taking shape as a bridge over the creek, marking a significant step forward.

Roadworks are on track for June, including asphalt, kerbs and footpaths, with guardrails, a pre-fabricated pedestrian bridge and water main reinstatement scheduled for July. Minor pedestrian disruptions may occur during final works and site clean-up, along with some temporary lane closures after opening to allow for line marking. An opening event is planned for Saturday 25 July, with more details to be shared soon. Council will continue to update the community as works progress. To learn more, visit townsville.qld.gov.au and search '[Gustav Creek Structure Restoration Works](#)'.¹



Save the Date: Recovery Roadshow

Saturday 12 September
Horseshoe Bay
Community Centre

This community-focused event will bring together emergency services, recovery service providers and support networks to share practical information, advice and referrals tailored to the Magnetic Island community. Residents can learn more about staying informed, building resilience, and recovering after severe weather events. Come along, connect with your community, and build your recovery network. More details will be shared closer to the event date.

Nelly Bay Road Upgrades Underway

Work is now underway on two key upgrades along Nelly Bay Road, with Shamrock Civil Engineering awarded the contract to deliver the guardrail renewal and new boardwalk. Early works have commenced on both projects, marking an important step toward improving safety and accessibility in the area.

Guardrail works began on 1 June and are expected to be completed by the end of the month, with traffic management in place to minimise disruption. The boardwalk is being delivered as a design and construct project, with design now underway and expected to be finalised by the end of August. Council will continue to keep the community informed as works progress.

Maintenance Dredging at Nelly Bay Harbour

Application Progress

Council is continuing to progress its application to the Department of Climate Change, Energy, the Environment and Water for a multi-year (10-year) offshore (sea) placement permit to support ongoing maintenance dredging in Nelly Bay Harbour.

As noted in the May update, the Department issued a Request for Information (RFI) in relation to Council's application. Since then, Council has been preparing the technical information required to support its response. Council will continue to keep the community informed as the application and RFI response progress.

Have Your Say – Consultation Outcomes

Have Your Say survey has now closed and Council thanks the community for its strong engagement. The feedback received has helped inform Council's approach to managing dredged material from Nelly Bay Harbour.

Survey results indicated support for offshore (sea) placement, with many respondents preferring this option over land-based placement at Council's Kelly Street site (55–77 Kelly Street) due to environmental, social and land use concerns. Council also considered feedback suggesting alternative mainland disposal locations; however, reassessment has confirmed there are no changes affecting the viability of previously considered options, which remain unfeasible at this time.

On this basis, Council is prioritising offshore placement as its preferred approach to managing dredged material from Nelly Bay Harbour. The Kelly Street site remains Council's approved option, with all required permits and approvals already in place.

To learn more, visit townsville.qld.gov.au and search '[Maintenance Dredging at Nelly Bay Harbour](#)'.

10c Recycling Secured for the Future

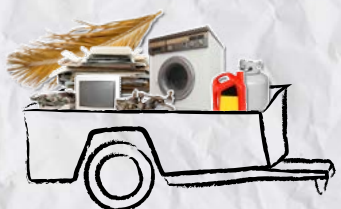
Council is finalising a new agreement with Container Exchange (COEX) to secure long-term access to 10c container recycling on Magnetic Island. While COEX is a State Government program, Council is proud to support this initiative, helping keep the service accessible, viable and sustainable for the long term.

To learn more, visit townsville.qld.gov.au and search '[Magnetic Island recycling scheme gets Council approval](#)'.

NEXT TRIP TO THE TIP, SORT AND SAVE

Council's waste facilities charge by load size.

Sort your load to make drop off for no-charge waste easy and help save cost of your final load.



Learn more on Council's website.

Treasure Emporium Turning Waste into Community Gold

The Magnetic Island Tip Shop, affectionately known as the Treasure Emporium, is more than just a place to drop off unwanted items. Since 2020, it has grown into a true community hub, and a one stop shop for locals who know to check there before buying new.

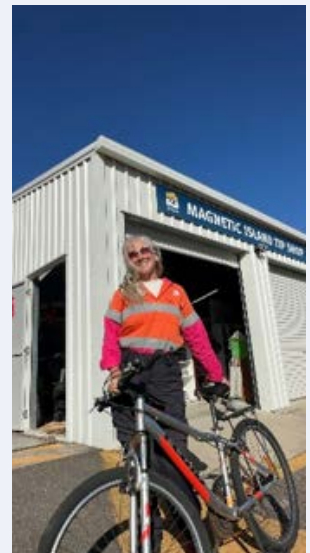
This year, the Tip Shop has diverted around 1.5 tonnes of waste from landfill while generating about \$1,000 in revenue. This result has doubled since last financial year, continuing to turn unwanted items into a self-sustaining community asset.

From books and DVDs to furniture and building materials, it is the Island's version of Kmart, Myer or Bunnings. Grandparents often stop in before visits from the grandkids to stock up on affordable entertainment, while others drop by for a browse or a chat.

With limited access to large retail stores, the Tip Shop fills an important gap for residents and supports a strong culture of reuse. What might be a weekend novelty elsewhere is a way of life on Magnetic Island, showing how resourcefulness can bring a community together and change the way we see waste.

If you have not visited yet, come down, meet our friendly team and connect with like-minded locals. You never know what treasure you might find.

To learn more, visit townsville.qld.gov.au and search '[Magnetic Island Transfer Station](#)'.



Spot Siam Weed Before it Spreads

Siam weed is currently easy to spot across Magnetic Island, with pale lilac flowers and distinctive leaves featuring large-toothed edges and three prominent veins shaped like a trident. As part of the Townsville City Biosecurity Plan 2025 to 2030, controlling this invasive species is a priority to help protect local natural areas and reduce Siam Weed's spread.

The good news is Siam weed is relatively easy to control, and the community can play an important role in helping manage its spread. It is shallow rooted and can be hand pulled or treated with herbicide, but it is essential to remove the entire root structure to stop it from reshooting. Any plant material left on the ground can regrow, so careful disposal is important. Council continues to manage outbreaks on public land and supports long running monthly Weedblitz efforts with the Department of the Environment, Tourism, Science and Innovation, working with the community to mitigate the impacts of this invasive weed.



Townsville Hosts North Queensland Water Connections Tour

The Queensland Water (QLDWater), Water Connections Tour is a significant event in the water industry calendar which informs state and local government decision makers on the complexities of delivering essential services across regional and remote communities.

On Magnetic Island, Council hosted the group at the Picnic Bay and Horseshoe Bay sewage treatment plants (STPs). Delegates witnessed the exceptional standard of treated effluent – clear, high-quality recycled water ready for reuse. Both STPs showcased advanced membrane bioreactor technology to treat wastewater for irrigation across local golf courses and community infrastructure, supporting sustainable water use in a sensitive environment. The visit also highlighted the challenges of meeting environmental licence conditions in communities with fluctuating populations, reinforcing the importance of tailored, resilient water solutions.



CONTACT US

City Projects

103 Walker Street, Townsville City
PO Box 1268, Townsville QLD 4810
13 48 10
cityprojects@townsville.qld.gov.au
townsville.qld.gov.au

READ MORE

SCAN CODE OR VISIT
TOWNSVILLE.QLD.GOV.AU
MAGNETIC ISLAND PROJECTS

SIGN UP TO E-NEWS

SUBSCRIBE TO E-NEWS TO
STAY UP-TO-DATE WITH
MAGNETIC ISLAND PROJECTS

