



# Townsville Water and Waste

## PD0023 Paluma Dam Emergency Action Plan

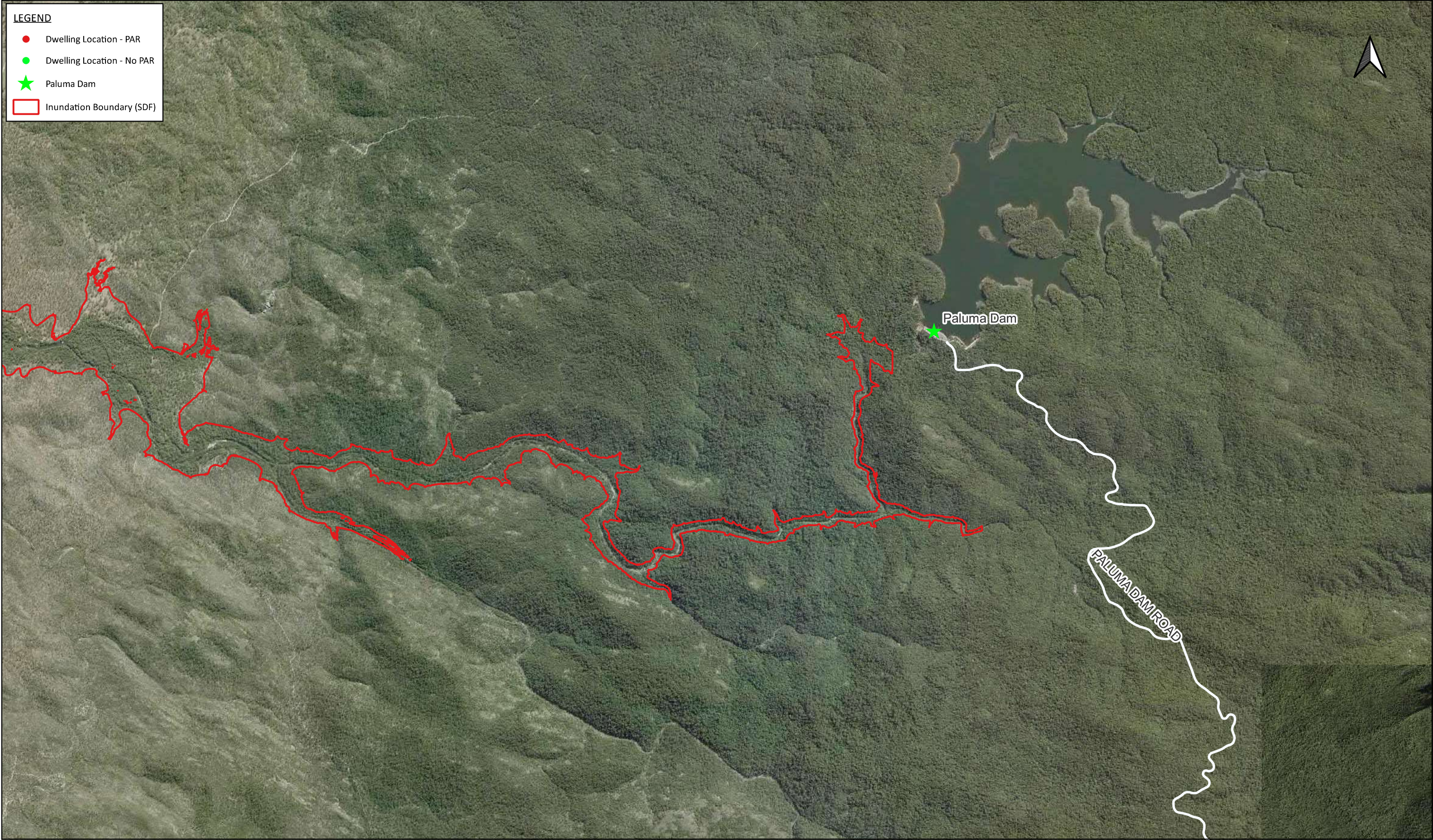
Authorised by: Principal Dam Safety & Operations N02632

Effective Date: 15/09/2023

### Appendices

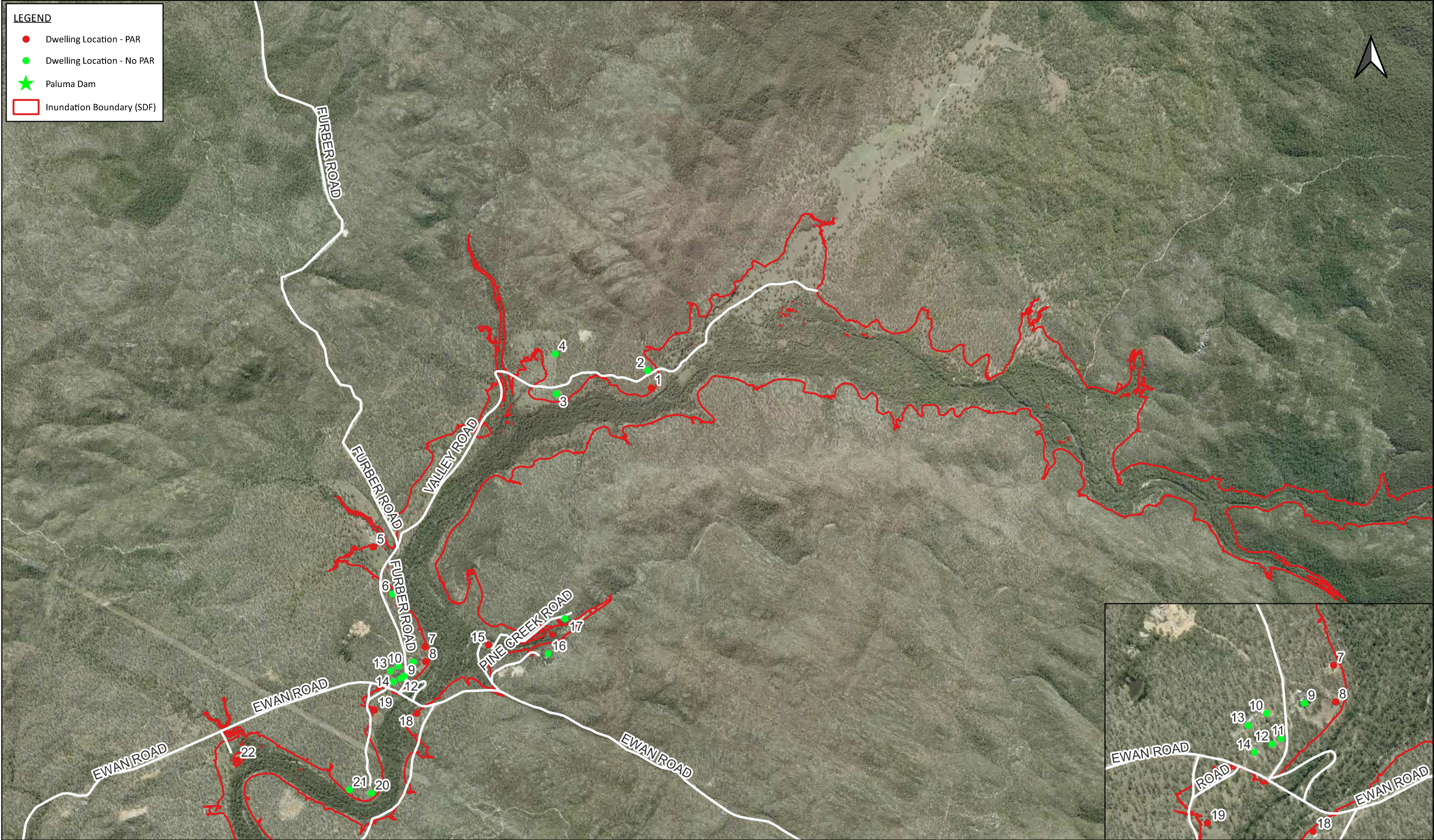
#### Appendix A - Inundation Maps for Probable Maximum Flood Including Dam Break and Sunny Day Failure



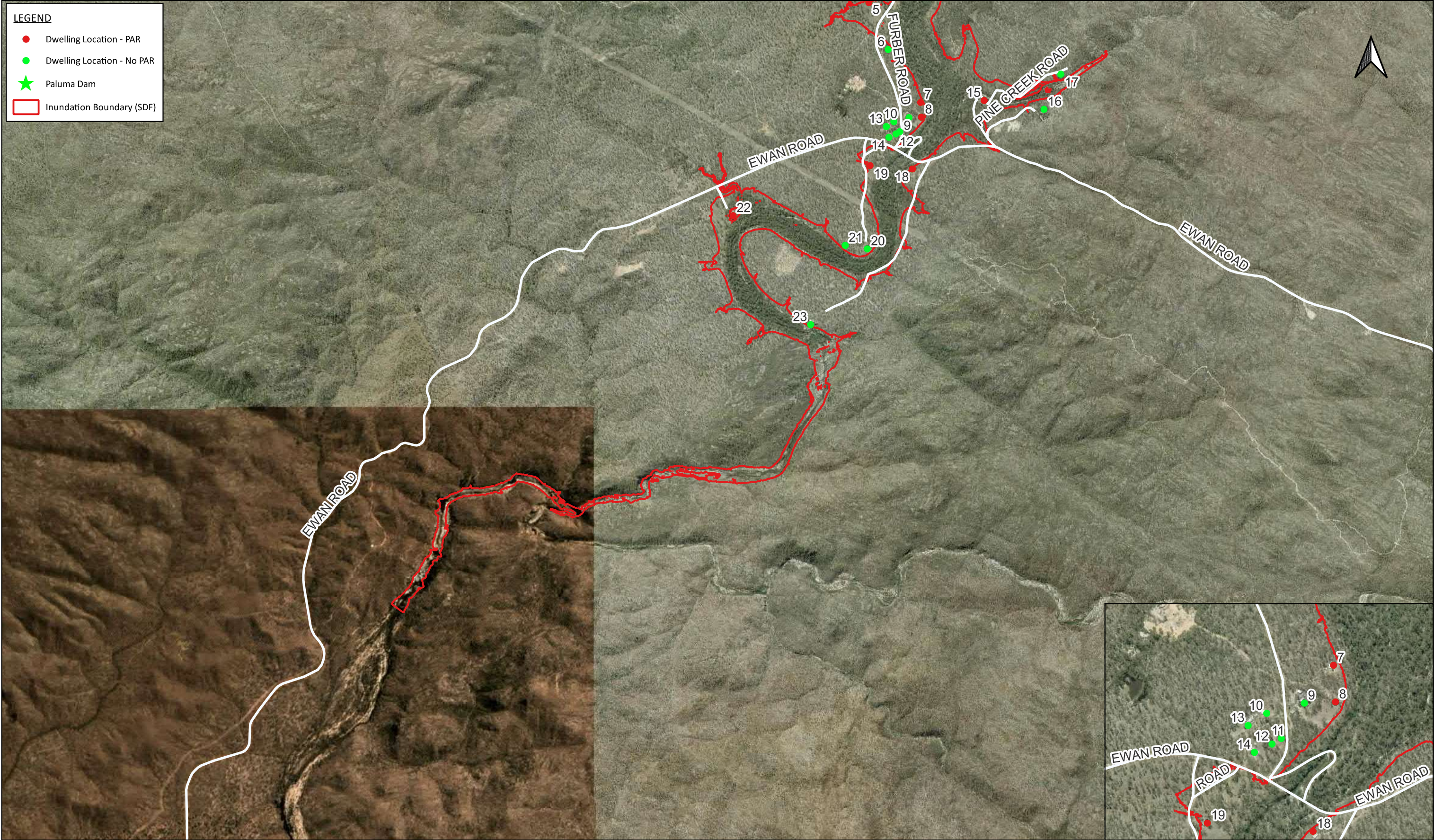


<div><div>PROJECT TITLE:</div>Paluma Dam FIA</div> <div><div>PROJECT NO:</div>30035710</div> <div><div>MAP TITLE:</div>SDF Inundation Map</div> <div><div>MAP NO:</div>1</div> <div><div>COORDINATE SYSTEM:</div>GDA 94 / MGA ZONE 55</div>	<div><div>REVISION:</div>01</div> <div><div>STATUS:</div>FINAL</div> <div><div>PAGE SIZE:</div>A3</div> <div><div>AUTHOR:</div>L.Meteyard</div> <div><div>SOURCES:</div>QGlobe</div> <div><div>DATE:</div>19/04/23</div>	<div><div>© SMEC Australia Pty Ltd 2022. All Rights Reserved</div><div>Disclaimer: While all reasonable care has been taken to ensure the information contained on this map is up to date and accurate, this map contains data from a number of sources - no warranty is given that the information contained on this is free from error or omission. Any reliance placed on such information shall be at the sole risk of the user. Please verify the accuracy of all information prior to using it. This map is not a design document.</div></div>	<div><div>CLIENT:</div><div><div>City of Townsville</div></div></div>	<div><div>CONSULTANT:</div><div><div>SMEC</div><div>Member of the Surbana Jurong Group</div></div></div>
<div><div>03006009001,2001,500 m</div></div>				









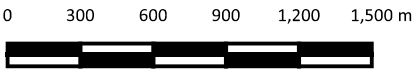
**PROJECT TITLE:** Paluma Dam FIA

**PROJECT NO:** 30035710

**MAP TITLE:** SDF Inundation Map

**MAP NO:** 3

**COORDINATE SYSTEM:** GDA 94 / MGA ZONE 55



**REVISION:** 01

**STATUS:** FINAL

**PAGE SIZE:** A3

**AUTHOR:** L.Meteyard

**SOURCES:** QGlobe

**DATE:** 19/04/23

© SMEC Australia Pty Ltd 2022. All Rights Reserved

Disclaimer: While all reasonable care has been taken to ensure the information contained on this map is up to date and accurate, this map contains data from a number of sources - no warranty is given that the information contained on this is free from error or omission. Any reliance placed on such information shall be at the sole risk of the user. Please verify the accuracy of all information prior to using it. This map is not a design document.

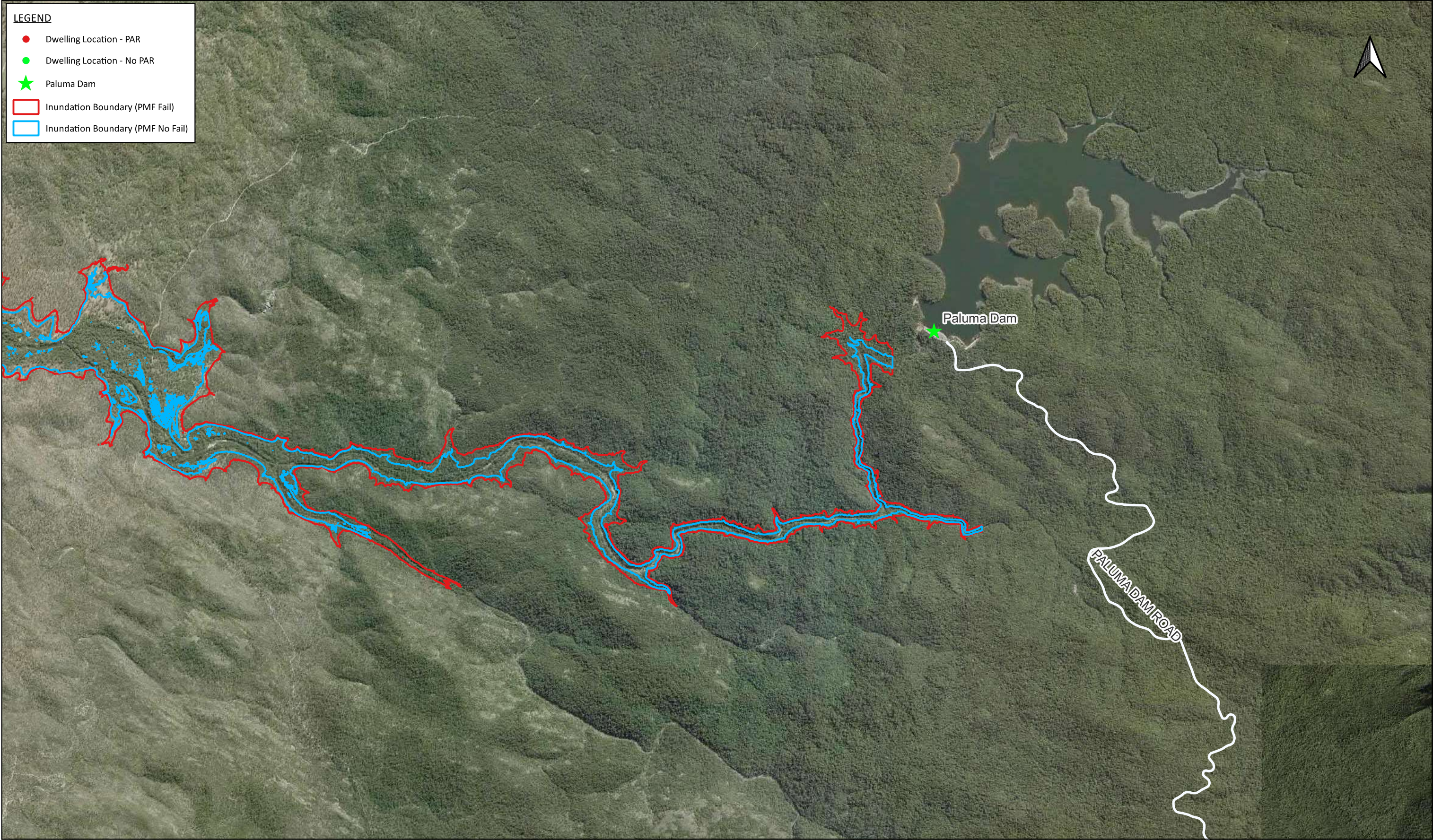
**CLIENT:**



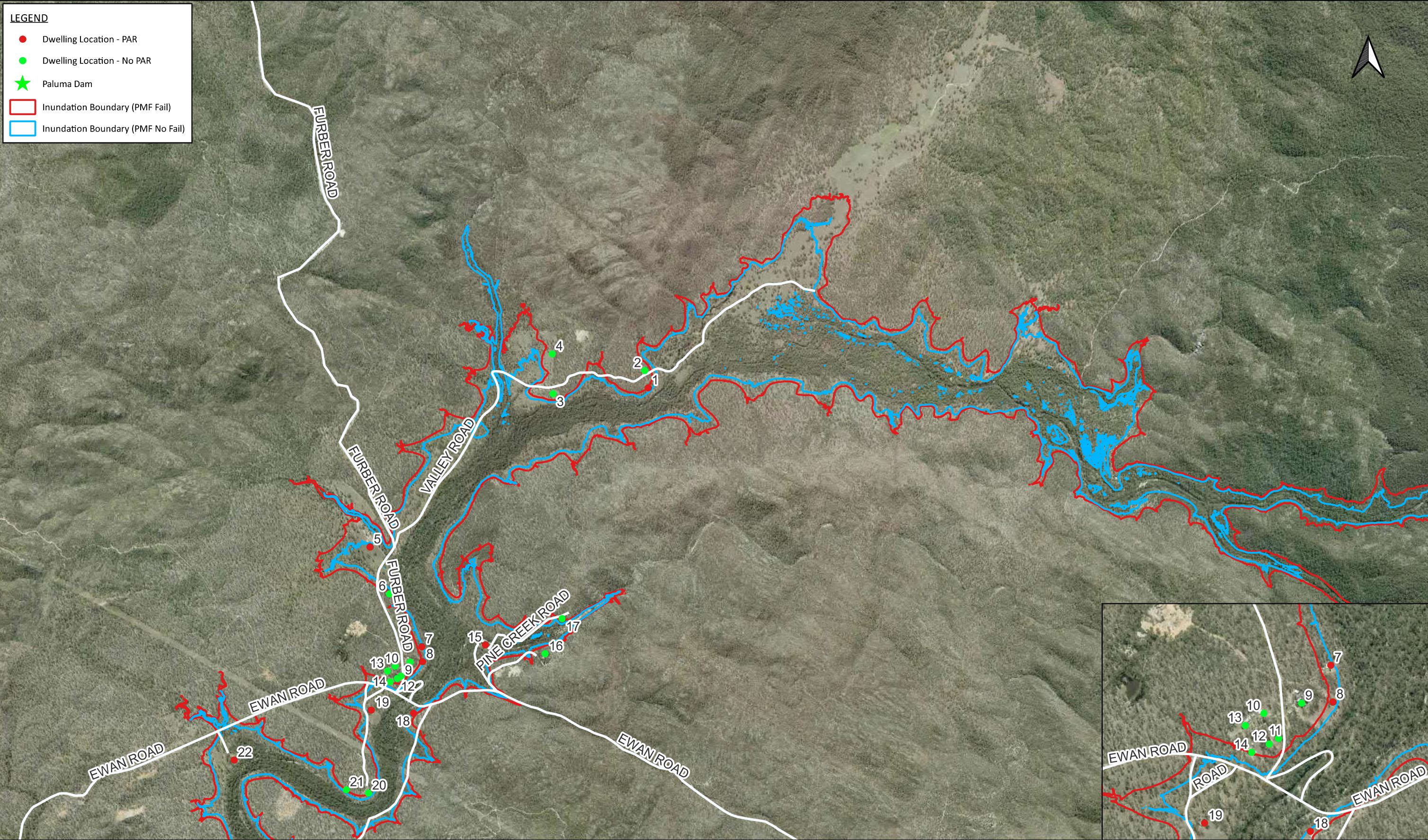
**CONSULTANT:**





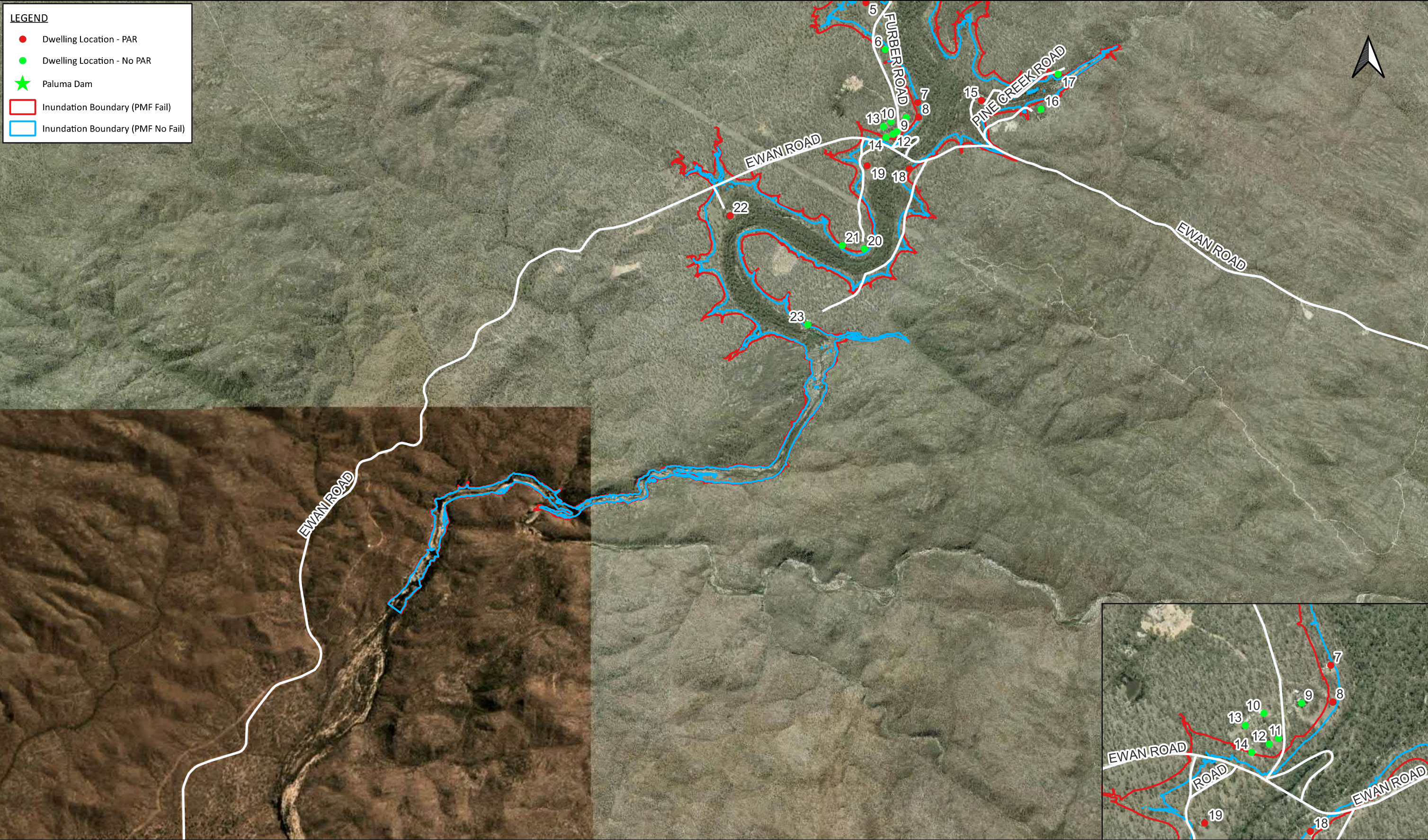






<p><b>PROJECT TITLE:</b> Paluma Dam FIA</p> <p><b>PROJECT NO:</b> 30035710</p> <p><b>MAP TITLE:</b> PMF Inundation Map</p> <p><b>MAP NO:</b> 2</p> <p><b>COORDINATE SYSTEM:</b> GDA 94 / MGA ZONE 55</p>		<p><b>REVISION:</b> 01</p> <p><b>STATUS:</b> FINAL</p> <p><b>PAGE SIZE:</b> A3</p> <p><b>AUTHOR:</b> L.Meteyard</p> <p><b>SOURCES:</b> QGlobe</p> <p><b>DATE:</b> 19/04/23</p>		<p><b>CLIENT:</b></p> <div></div>		<p><b>CONSULTANT:</b></p> <div> Member of the Surbana Jurong Group</div>	
<p>0 300 600 900 1,200 1,500 m</p> <div></div>		<p>© SMEC Australia Pty Ltd 2022. All Rights Reserved</p> <p>Disclaimer: While all reasonable care has been taken to ensure the information contained on this map is up to date and accurate, this map contains data from a number of sources - no warranty is given that the information contained on this is free from error or omission. Any reliance placed on such information shall be at the sole risk of the user. Please verify the accuracy of all information prior to using it. This map is not a design document.</p>					





LEGEND

Dwelling Location - PAR

Dwelling Location - No PAR

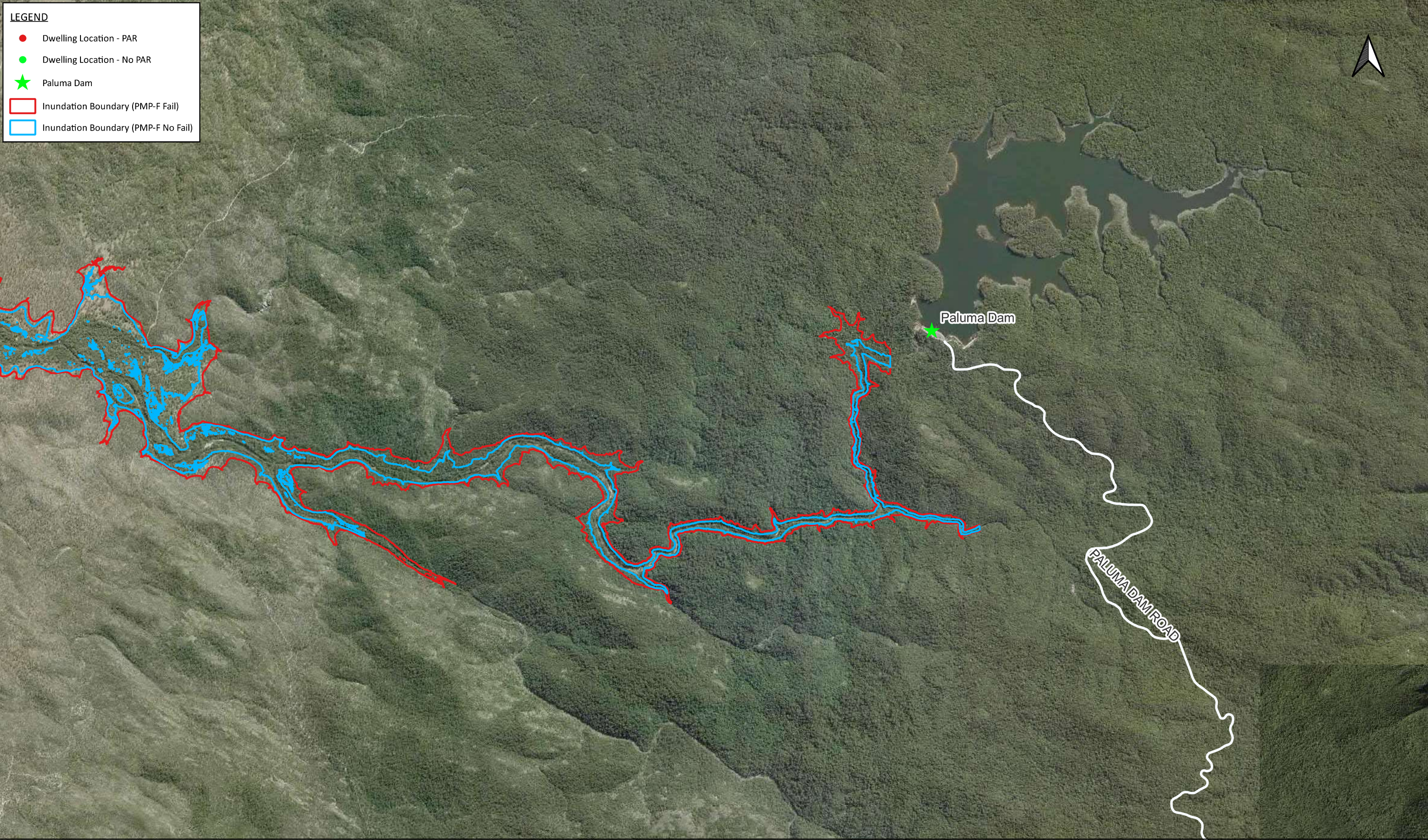
Paluma Dam



Inundation Boundary (PMF Fail)

Inundation Boundary (PMF No Fail)

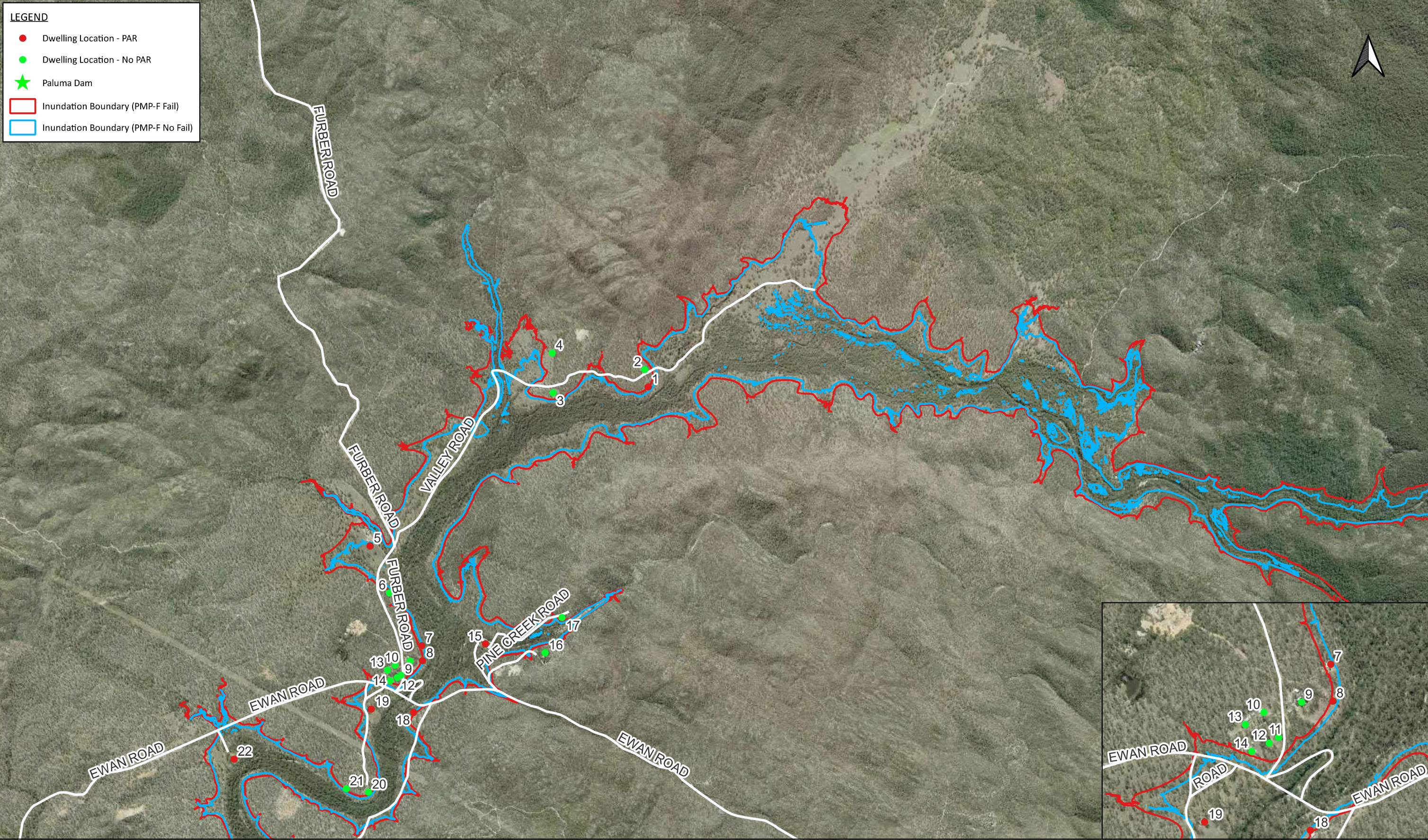
<div>PROJECT TITLE:</div> Paluma Dam FIA	<div>REVISION:</div> 01	<div>© SMEC Australia Pty Ltd 2022. All Rights Reserved</div> <div>Disclaimer: While all reasonable care has been taken to ensure the information contained on this map is up to date and accurate, this map contains data from a number of sources - no warranty is given that the information contained on this is free from error or omission. Any reliance placed on such information shall be at the sole risk of the user. Please verify the accuracy of all information prior to using it. This map is not a design document.</div>	<div>CLIENT:</div> <div><div>City of Townsville</div></div>	<div>CONSULTANT:</div> <div><div>SMEC</div><div>Member of the Surbana Jurong Group</div></div>
<div>PROJECT NO:</div> 30035710	<div>STATUS:</div> FINAL			
<div>MAP TITLE:</div> PMF Inundation Map	<div>PAGE SIZE:</div> A3			
<div>MAP NO:</div> 3	<div>AUTHOR:</div> L.Meteyard			
<div>COORDINATE SYSTEM:</div> GDA 94 / MGA ZONE 55	<div>SOURCES:</div> QGlobe			
	<div>DATE:</div> 19/04/23			





<p><b>PROJECT TITLE:</b> Paluma Dam FIA</p> <p><b>PROJECT NO:</b> 30035710</p> <p><b>MAP TITLE:</b> PMP-F Inundation Map</p> <p><b>MAP NO:</b> 1</p> <p><b>COORDINATE SYSTEM:</b> GDA 94 / MGA ZONE 55</p>		<p><b>REVISION:</b> 01</p> <p><b>STATUS:</b> FINAL</p> <p><b>PAGE SIZE:</b> A3</p> <p><b>AUTHOR:</b> L.Meteyard</p> <p><b>SOURCES:</b> QGlobe</p> <p><b>DATE:</b> 19/04/23</p>		<p><b>CLIENT:</b></p> <p></p>		<p><b>CONSULTANT:</b></p> <p></p>	
--	--	--	--	--	--	--	--





LEGEND

Dwelling Location - PAR

Dwelling Location - No PAR

Paluma Dam

Inundation Boundary (PMP-F Fail)

Inundation Boundary (PMP-F No Fail)

PROJECT TITLE:

Paluma Dam FIA

PROJECT NO:

30035710

MAP TITLE:

PMP-F Inundation Map

MAP NO:

2

COORDINATE SYSTEM:

GDA 94 / MGA ZONE 55

03006009001,2001,500 m

REVISION:

01

STATUS:

FINAL

PAGE SIZE:

A3

AUTHOR:

L.Meteyard

SOURCES:

QGlobe

DATE:

19/04/23

© SMEC Australia Pty Ltd 2022. All Rights Reserved

Disclaimer: While all reasonable care has been taken to ensure the information contained on this map is up to date and accurate, this map contains data from a number of sources - no warranty is given that the information contained on this is free from error or omission. Any reliance placed on such information shall be at the sole risk of the user. Please verify the accuracy of all information prior to using it. This map is not a design document.

CLIENT:

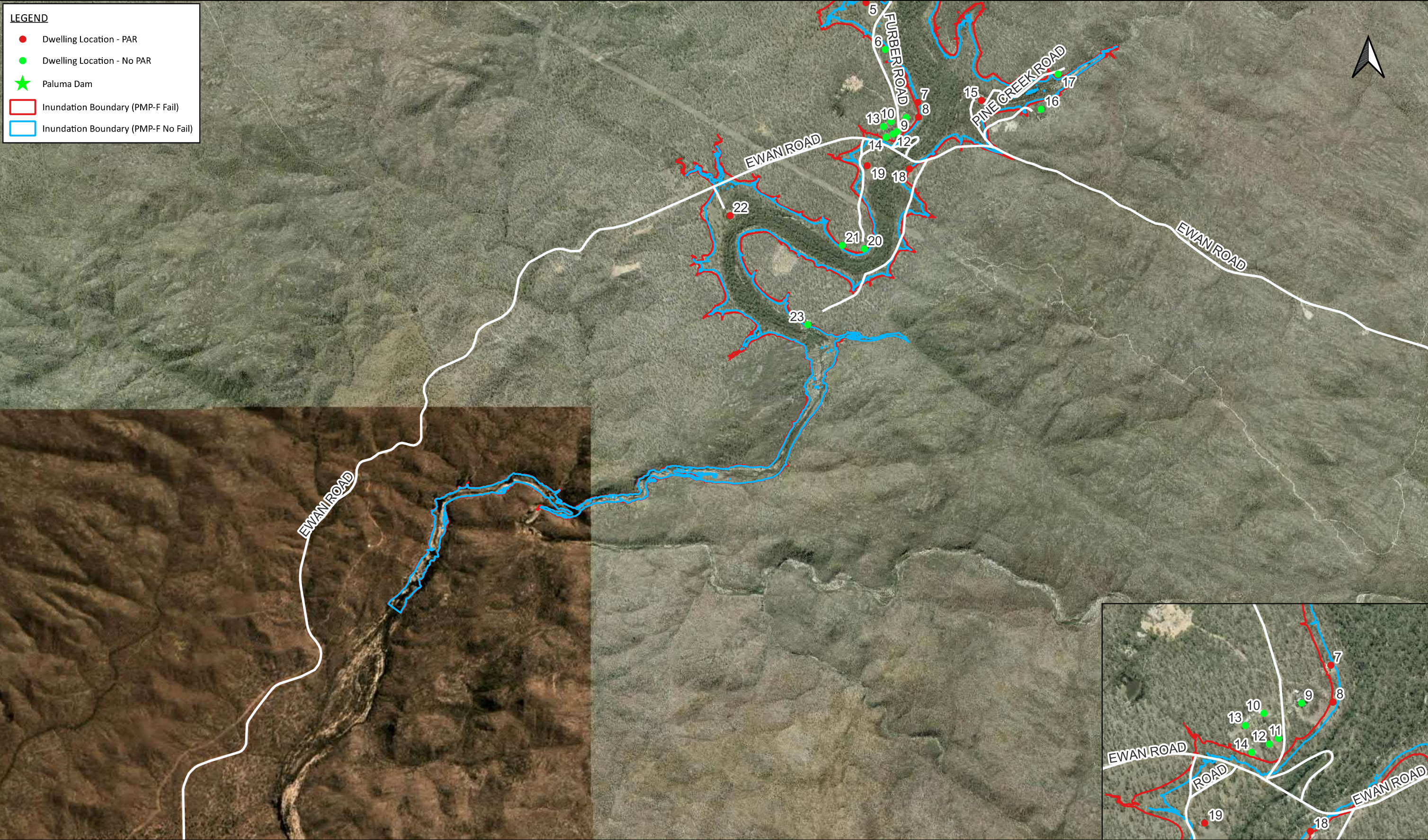
City of Townsville

CONSULTANT:

SMEC

Member of the Surbana Jurong Group





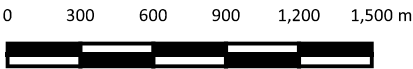
**PROJECT TITLE:** Paluma Dam FIA

**PROJECT NO:** 30035710

**MAP TITLE:** PMP-F Inundation Map

**MAP NO:** 3

**COORDINATE SYSTEM:** GDA 94 / MGA ZONE 55



**REVISION:** 01

**STATUS:** FINAL

**PAGE SIZE:** A3

**AUTHOR:** L.Meteyard

**SOURCES:** QGlobe

**DATE:** 19/04/23

© SMEC Australia Pty Ltd 2022. All Rights Reserved

Disclaimer: While all reasonable care has been taken to ensure the information contained on this map is up to date and accurate, this map contains data from a number of sources - no warranty is given that the information contained on this is free from error or omission. Any reliance placed on such information shall be at the sole risk of the user. Please verify the accuracy of all information prior to using it. This map is not a design document.

**CLIENT:**



**CONSULTANT:**

