



**Sustaining economic growth**

- Urban land**
- Urban area
  - Key productive precinct - industrial
  - Key productive precinct - specialised centre
- Non-urban land**
- Rural residential area
  - Rural area
  - Major natural assets
- Centres**
- Centre
  - Future centre
  - Specialised centre
- Other elements**
- Department of Defence landholding
  - Water supply dam
  - Industrial investigation area
  - Extractive resource
  - Tourism and ecotourism development
- Infrastructure corridors**
- High voltage transmission line
  - Water supply pipeline
  - Gas pipeline
- Transport systems**
- Major road network
  - Intra-urban freight
  - Inter-regional freight
  - Future major road network
  - Railway corridor
  - Future railway corridor
  - Shipping channel
- Cadastre**
- Local government boundary
  - Adjoining local government area
  - Waterway or waterbody

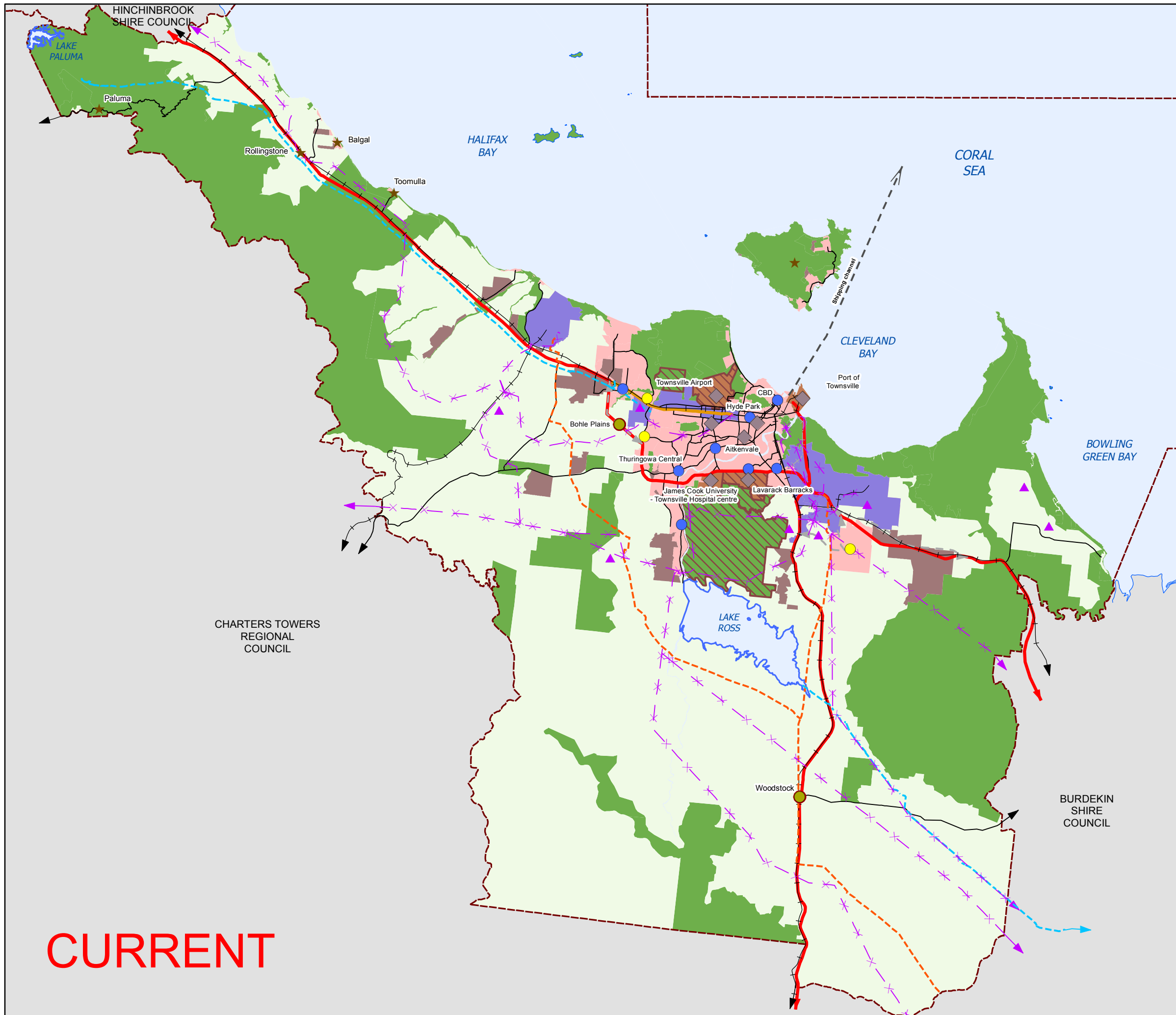
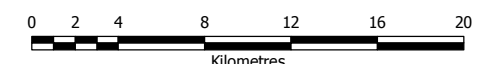
Strategic framework data was supplied by the Planning and Development Division of the Townsville City Council. This data is to be used as a guide only for planning purposes.

While every care is taken to ensure the accuracy of this product, Townsville City Council makes no representations or warranties about the accuracy, reliability, completeness or suitability for any particular purpose and disclaims all responsibility and all liability (including without limitation, liability in negligence) for all expenses, losses, damages (including indirect or consequential damage) and costs you may incur as a result of the product being inaccurate or incomplete in any way or for any reason.

© Townsville City Council 2017  
 Gazettal Date: 28/04/2017  
 Amendment 2017/03

Geocentric Datum of Australia 1994 (GDA94)

**Approx Scale @ A3 1:350,000**



**CURRENT**