

Clean Building Sites

SAFEGUARDING TOWNSVILLE'S ENVIRONMENTAL HEALTH

Water contamination poses a serious impact on the environment. Builders and developers have obligations to prevent the deposit or release of sand, sediment, silt, rubbish or building materials into council gutters, stormwater drains and waterways from building sites.

It is your responsibility to ensure you maintain a clean building site to prevent water contamination.

WHAT DOES THIS MEAN FOR BUILDERS & DEVELOPERS

Environmental Health Officers enforce the *Environmental Protection Act 1994* to ensure potential sediment, sand, silt runoff and/or rubbish discharge into council Waterways is controlled to protect water quality.

PENALTIES FOR NOT COMPLYING

Causing water contamination will result in on the spot fines being issued under the *Environmental Protection Act 1994*. These fines are substantial and equate to thousands of dollars.

WHAT YOU NEED TO DO

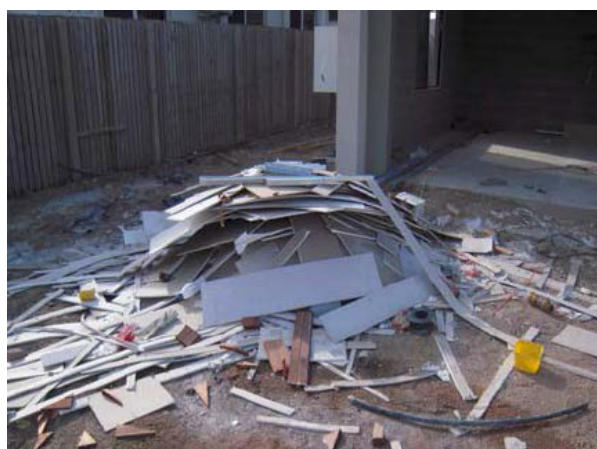
By attending to the following you will avoid water contamination:

- Install and maintain sediment fences to control runoff,
- Place gravel sausages to reduce material entering stormwater drains,
- Have waste containers available,
- Building waste containers using corrugated iron and stakes,
- Empty waste containers and clear other waste storages on a regular basis.

COMMON BUILDING SITE DEFICIENCIES

- No establishment of stabilised entry and exit points,
- Unnecessary site disturbance (such as parking or driving on exposed soil)

- Failure to divert upslope water,
- Failure to install sediment controls such as sediment fences or turf strips,
- Delays in connecting downpipes to stormwater drains,
- Incorrect siting of stockpiles,
- Failure to install and/or maintain adequate drop inlet sediment traps.



EFFECTS OF POORLY MANAGED BUILDING SITES

- Increased cost to the developer for replacement of materials,
- Council issuing directives,
- Environmental harm to waterways and beaches,
- Hazards for other vehicles and pedestrians,
- Harm to animal and wildlife.



BENEFITS OF 'BEST PRACTICE' APPROACH TO STORMWATER POLLUTION CONTROL

- Improve wet weather working conditions,
- Reduced stockpile losses,
- Reduced clean-up costs,
- More marketable sites,
- Fewer public complaints,
- Reduced risk of downtime and fines,
- Earlier completion date,
- Enhance and protect local waterways and ecosystems,
- Avoid the silting up of Council stormwater infrastructure.

LITTER & BUILDING WASTE

All hard waste should be contained on site in a manner that prevents material loss by water or wind. Smaller materials such as litter can be contained in covered bins or litter traps.

It is every person's responsibility to manage litter on building sites to stop environmental harm.

HOME RENNOVATORS / BUILDERS

If you are conducting home renovations you are also required to comply with the same requirements as builders and developers and prevent water contamination.

Make sure you prevent runoff by controlling soil, sediment and litter on your property.

Penalties for home renovators are the same as builders and developers.



MORE INFORMATION & CONTACTING COUNCIL

If you require any further information about this or any other Environmental Nuisance issue, please call Council's Customer Service Centre on 1300 878 001.

Alternatively a range of Fact Sheets along with information regarding other Environmental Nuisance issues can be accessed by visiting the Townsville City Council website www.townsville.qld.gov.au and following the links to Environmental Nuisances

