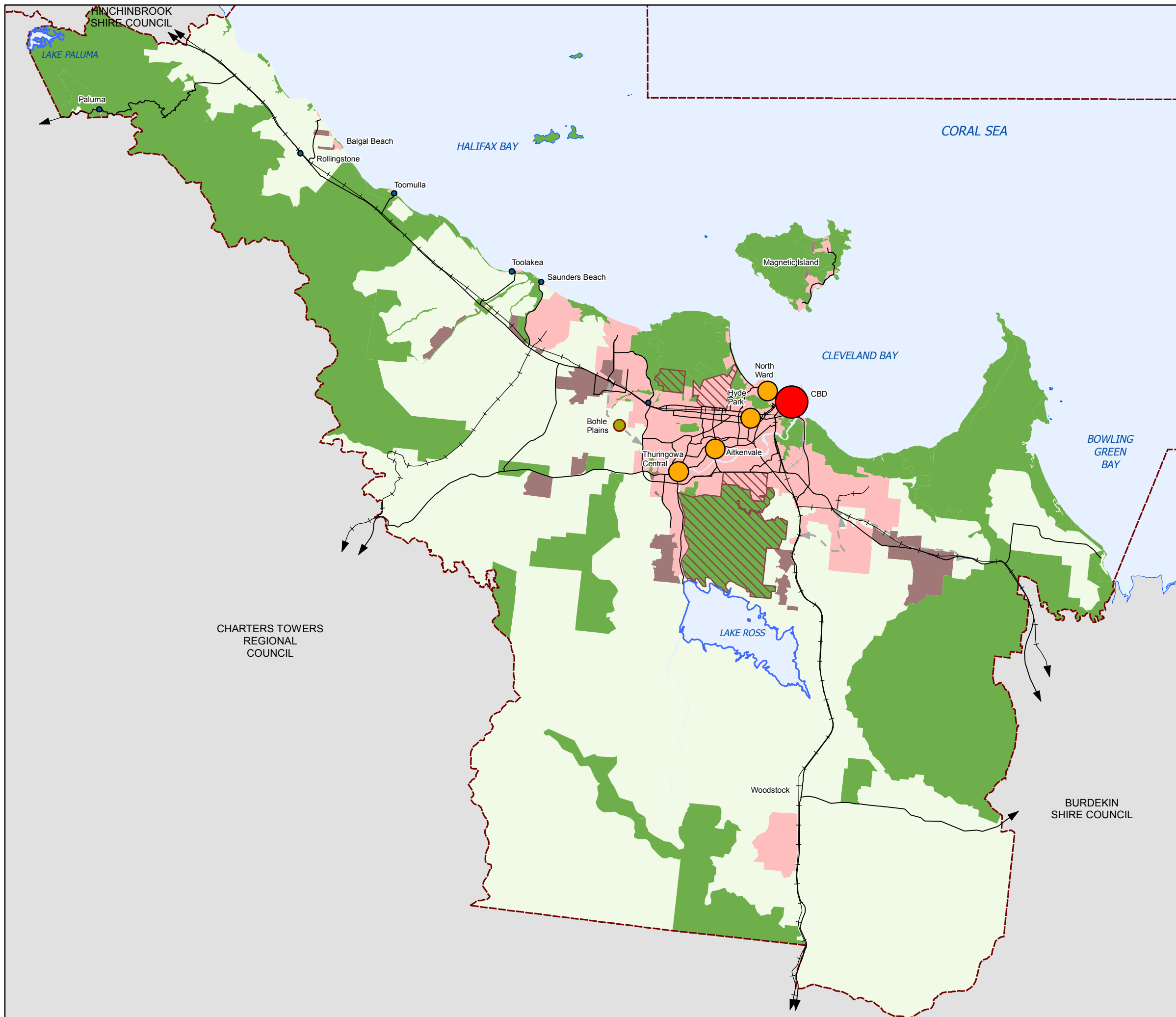




**Townsville City Council
Planning Scheme
Strategic Framework Map**

Shaping Townsville



Urban land

Urban area

Non-urban land

Rural residential area

Rural land

Major natural assets

Infill development

Principal centre (CBD)

Infill area

Other elements

Department of Defence landholding

Water supply dam

Industrial investigation area

Transport systems

Major road network

Future major road network

Railway corridor

Future railway corridor

Cadastre

Local government boundary

Adjoining local government area

Waterway or waterbody

DRAFT

Strategic framework data was supplied by the Planning and Development Division of the Townsville City Council. This data is to be used as a guide only for planning purposes.

While every care is taken to ensure the accuracy of this product, Townsville City Council makes no representations or warranties about the accuracy, reliability, completeness or suitability for any particular purpose and disclaims all responsibility and all liability (including without limitation, liability in negligence) for all expenses, losses, damages (including indirect or consequential damage) and costs you may incur as a result of the product being inaccurate or incomplete in any way or for any reason.

© Townsville City Council 2019
Gazettal Date: 17/10/2014

Geocentric Datum of Australia 1994 (GDA94)



Approx Scale @ A3 1:350,000

