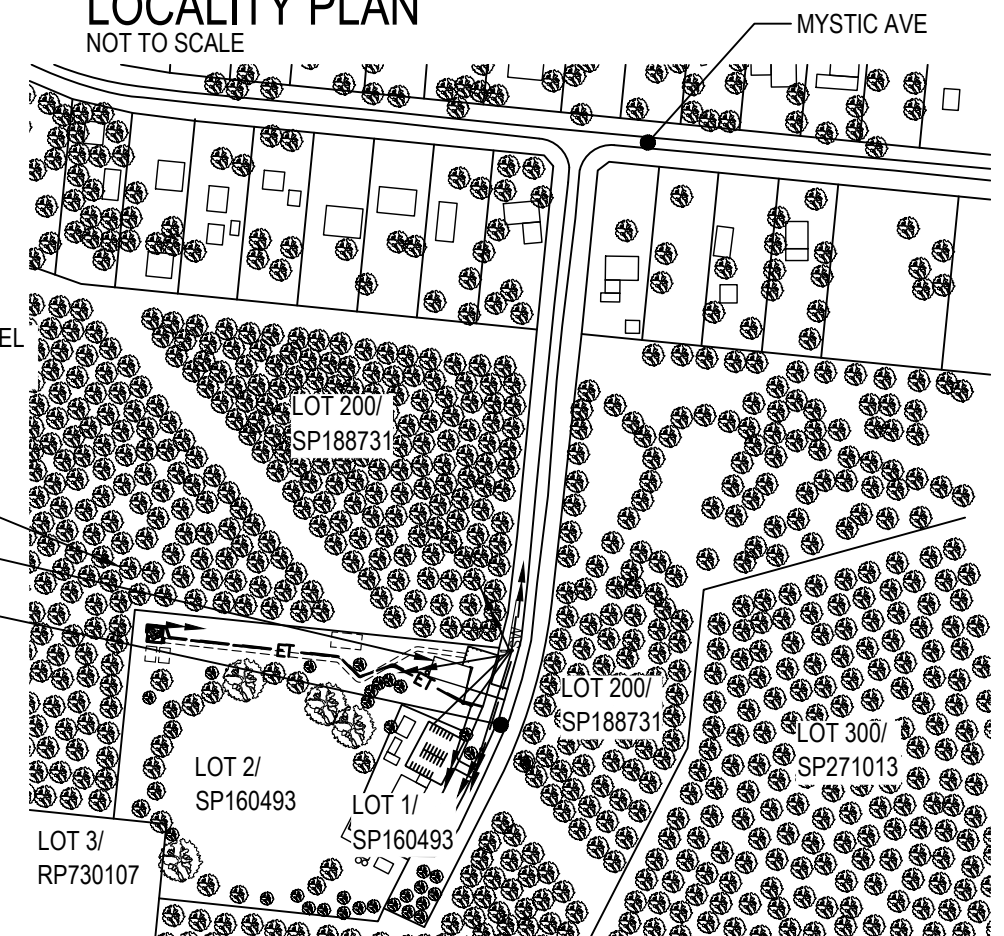


Copyright © Whereis® Registered Trademark of Sensis Pty Ltd.

LOCALITY PLAN

NOT TO SCALE



SITE ACCESS

SCALE 1:5000

50m 0 50m 100m 150m 200m 250m SCALE 1:5000

PRELIMINARY



TOWER AMS SITE REF QLD008076
BALGAL BEACH

SITE LAYOUT AND ACCESS

DWG NO.	QLD008076	SHT NO.	S1
------------	-----------	------------	----

TO BE READ IN CONJUNCTION WITH SHEETS S1-1, S3 & S7.

ORDER	DRAWN	CHKD	AMENDMENT	EXAM	APPD	DATE	ISS
BTS-19940	JM	MD	PRELIMINARY - SP80002584WO053BMM	PE	KB	27.01.25	1

©Amplitel PTY LTD as Trustee for the Towers Business Operating Trust (ACN 086 174 781) All rights reserved.

DWG NO.	QLD008076	SHT NO.	S1
------------	-----------	------------	----

SERVICES LEGEND

— T — — — T — — — T — — —	OPTICAL FIBRE BELOW GROUND
— — — E — — — — E — — —	BELLOW GROUND ELECTRICAL SUPPLY
— — — E — — — — E — — —	ABOVE GROUND ELECTRICAL SUPPLY
— — — FE — — — — FE — — —	ABOVE GROUND FEEDER CABLES
— — — W — — — — W — — —	WATER SUPPLY BELOW GROUND
— — — — SW — — — —	STORM WATER

NOTES:

1. THIS DRAWING SET IS A PRELIMINARY DRAWING ONLY AND IS ISSUED FOR COMMENT. IT IS NOT A DETAILED SURVEY/STRUCTURAL DRAWING AND THEREFORE COULD BE SUBJECT TO CHANGE.
2. ALL DIMENSIONS ARE IN MILLIMETRES UNLESS SPECIFIED OTHERWISE.
3. BUILDING CONTRACTOR SHALL CONFIRM SUITABLE CONSTRUCTION SET UP AREAS AND ENSURE RELEVANT PERMITS ARE IN PLACE PRIOR TO STARTING WORKS.

SITE STRUCTURE CO-ORDINATES (GDA94)
GPS READING ACCURACY: $\pm 10\text{m}$
CENTRE OF POLE

PROPERTY DESCRIPTION PART OF LOT 2 ON SP160493	LATITUDE	-19.04368° (GDA 94)
	LONGITUDE	146.40739° (GDA 94)



— T — — — T — — — T — — — OPTICAL FIBRE BELOW GROUND
— — — E — — — E — — — BELOW GROUND ELECTRICAL SUPPLY
——— FE ————— FE ——— ABOVE GROUND FEEDER CABLES

1. THIS DRAWING SET IS A PRELIMINARY DRAWING ONLY AND IS ISSUED FOR COMMENT. IT IS NOT A DETAILED SURVEY/STRUCTURAL DRAWING AND THEREFORE COULD BE SUBJECT TO CHANGE.
2. ALL DIMENSIONS ARE IN MILLIMETRES UNLESS SPECIFIED OTHERWISE.



SCALE 1:150

3m 0 3m 6m SCALE 1:150

DO NOT
SCALE

PRELIMINARY



AMPLITEL
Part of the Telstra Group

SOUTH ELEVATION

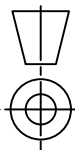
44 COMMUNITY CRESCENT, BALGAL BEACH, QLD 4816

DWG
NO.

QLD008076

SHT NO.	
------------	--

S3

The logo for bmm GROUP, featuring the lowercase letters 'bmm' in a bold, blue, sans-serif font, with the word 'GROUP' in a smaller, grey, uppercase, sans-serif font below it.

TO BE READ IN CONJUNCTION WITH SHEETS S1, S1-1 & S7.

ORDER	DRAWN	CHKD	AMENDMENT	EXAM	APPD	DATE	IS
BTS-19940	JM	MD	PRELIMINARY - SP80002584WO053BMM	PE	KB	27.01.25	1
© Amplitel PTY LTD as Trustee for the Towers Business Operating Trust (ACN 086 174 781) All rights reserved.							



AERIAL PHOTO LOCALITY PLAN
NOT TO SCALE



TO BE READ IN CONJUNCTION WITH SHEETS S1, S1-1 & S3.

ORDER	DRAWN	CHKD	AMENDMENT	EXAM	APPD	DATE	ISS
BTS-19940	JM	MD	PRELIMINARY - SP80002584WO053BMM	PE	KB	27.01.25	1

© Amplitel PTY LTD as Trustee for the Towers Business Operating Trust (ACN 086 174 781) All rights reserved.

PRELIMINARY



TOWER AMS SITE REF QLD008076
BALGAL BEACH
AERIAL PHOTO LOCALITY PLAN
44 COMMUNITY CRESCENT, BALGAL BEACH, QLD 4816

DWG NO. **QLD008076** SHT NO. **S7**